

**Room Description:** Sterile Processing, Surgical Services (ORSR1)

**NSF:** 150

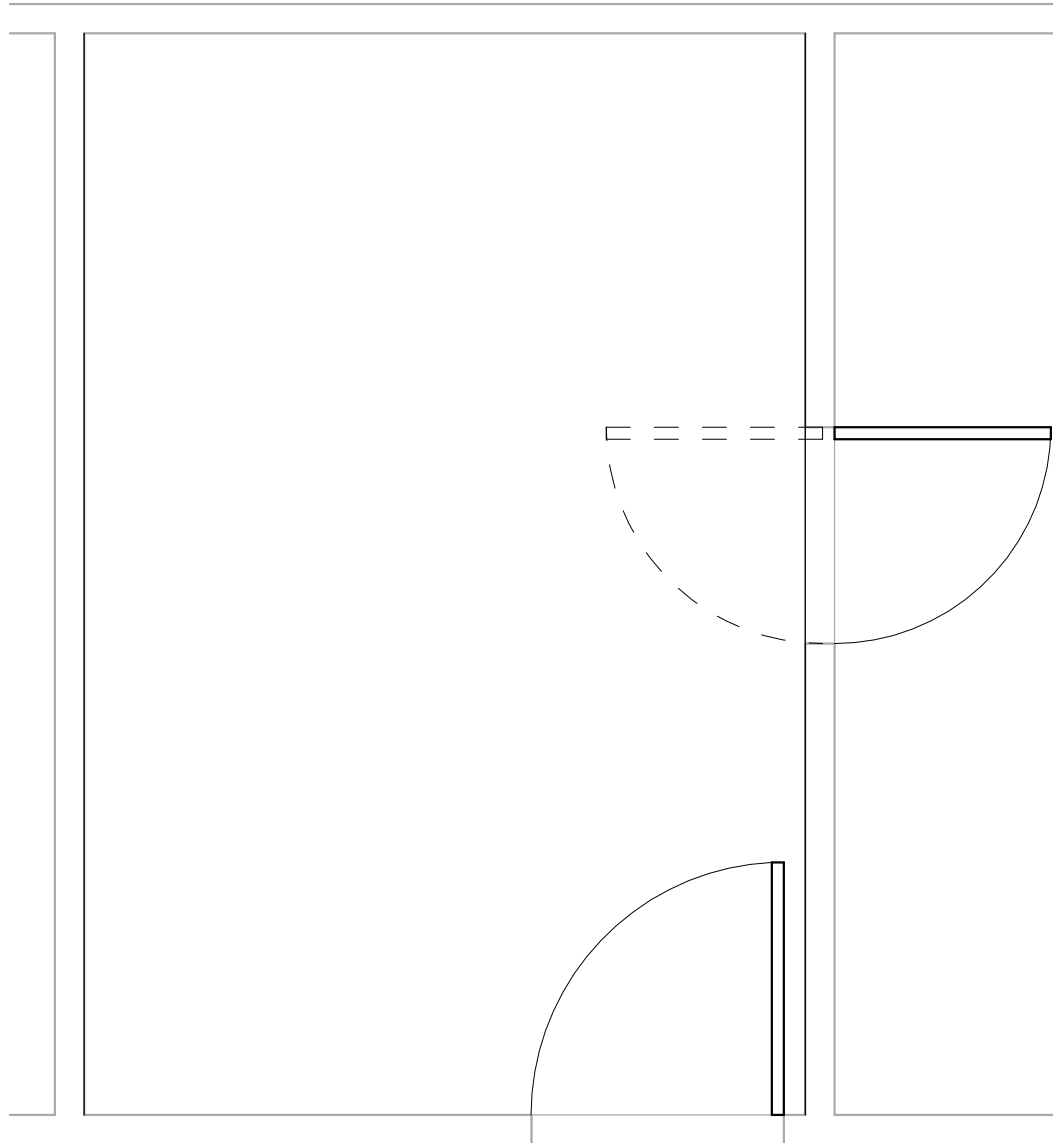
**ORSR1**

**Sheet Description:** Room/Equipment Isometric

**Scale:**

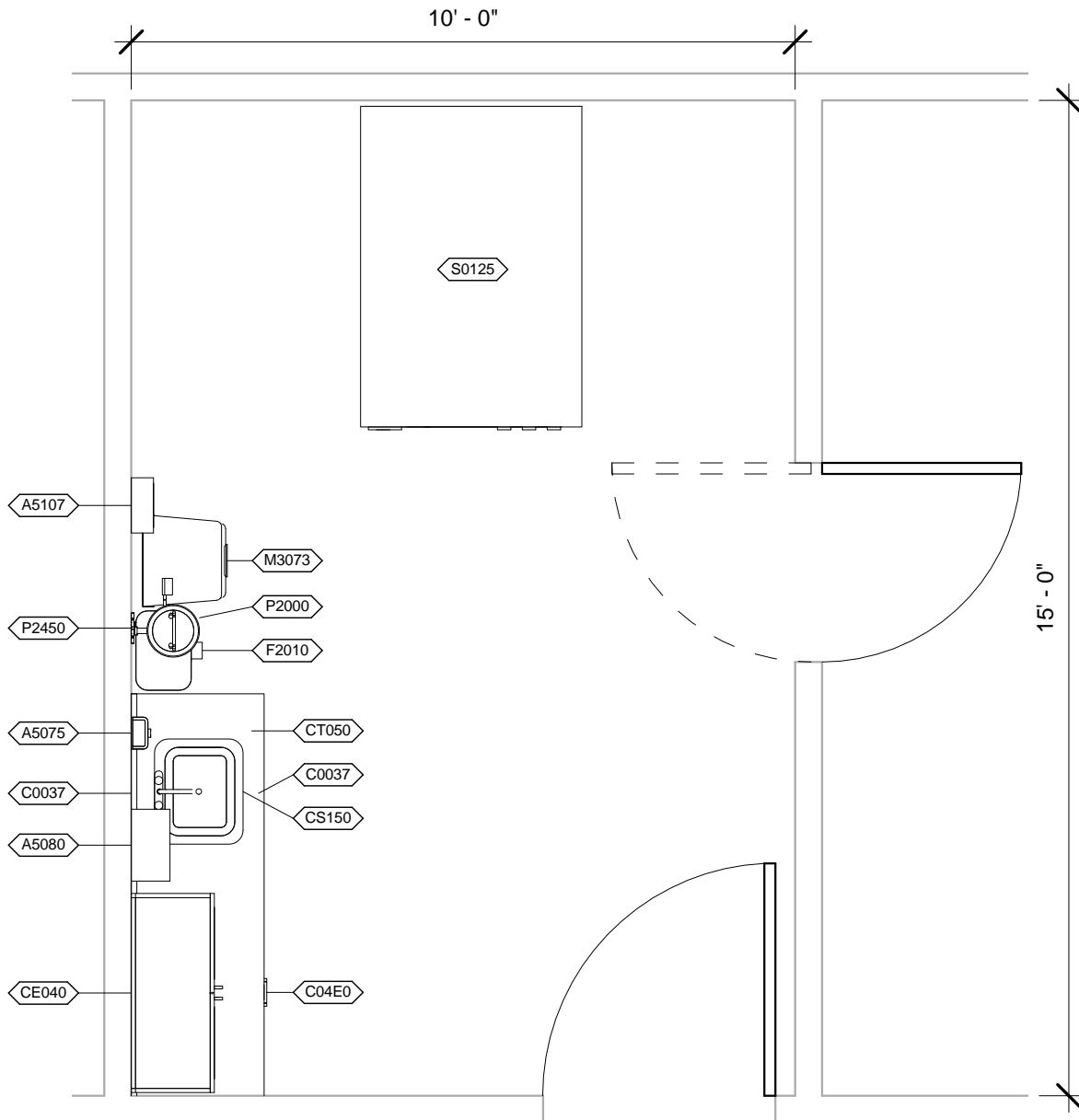
Sheet  
**1**

of  
**5**

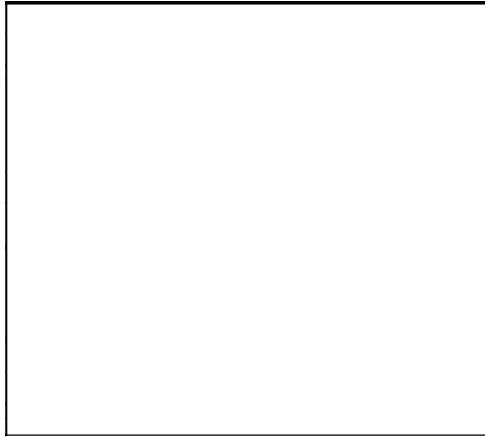


**ORSR1 - CEILING MOUNTED EQUIPMENT PLAN**

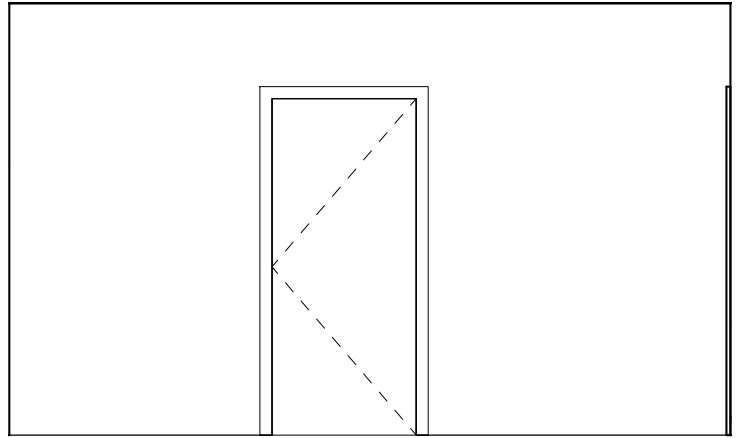
|  |                            |                   |                |
|--|----------------------------|-------------------|----------------|
| <b>Room Description:</b> Sterile Processing, Surgical Services (ORSR1) | <b>NSF:</b> 150            | <b>ORSR1</b>      |                |
| <b>Sheet Description:</b> Ceiling Mounted Equipment Plan               | <b>Scale:</b> 3/8" = 1'-0" | Sheet<br><b>2</b> | of<br><b>5</b> |



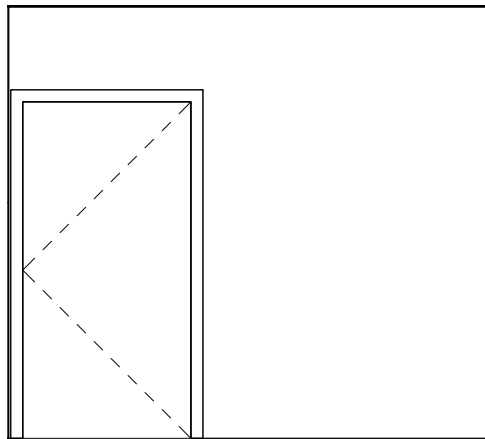
|  |                            |                     |                  |
|--|----------------------------|---------------------|------------------|
| <b>Room Description:</b> Sterile Processing, Surgical Services (ORSR1) | <b>NSF:</b> 150            | <h1>ORSR1</h1>      |                  |
| <b>Sheet Description:</b> Equipment Plan                               | <b>Scale:</b> 3/8" = 1'-0" | Sheet<br><h2>3</h2> | of<br><h2>5</h2> |



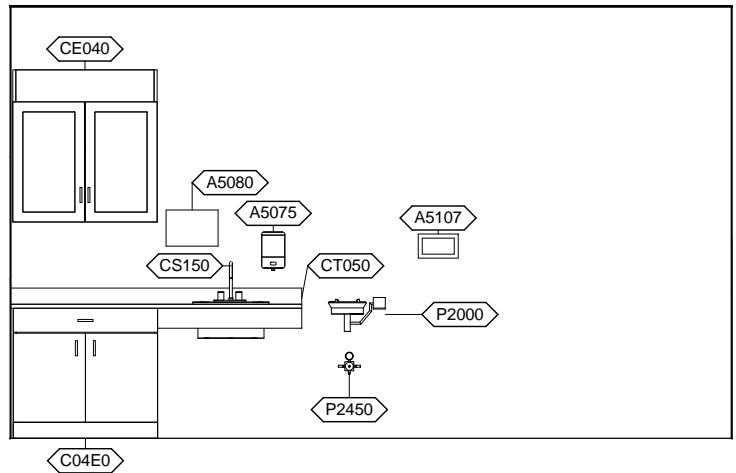
ORSR1 - NORTH ELEVATION



ORSR1 - EAST ELEVATION



ORSR1 - SOUTH ELEVATION



ORSR1 - WEST ELEVATION

|  |                            |                     |                  |
|--|----------------------------|---------------------|------------------|
| <b>Room Description:</b> Sterile Processing, Surgical Services (ORSR1) | <b>NSF:</b> 150            | <h1>ORSR1</h1>      |                  |
| <b>Sheet Description:</b> Interior Room Elevations                     | <b>Scale:</b> 1/4" = 1'-0" | Sheet<br><h2>4</h2> | of<br><h2>5</h2> |

ORSR1 - EQUIPMENT SCHEDULE

| JSN   | Nomenclature                                      | Qty | LF    | AR | Logistics |    |    | Utilities |   |   |   |   |   |
|-------|---|-----|-------|----|-----------|----|----|-----------|---|---|---|---|---|
|       |   |     |       |    | NA        | AF | VA | 1         | 2 | 3 | 4 | 5 | 6 |
| A5075 | Dispenser, Soap, Disposable                       | 1   |       | C  | C         | C  | C  | -         | - | - | - | - | - |
| A5080 | Dispenser, Paper Towel, SS, Surface Mounted       | 1   |       | A  | A         | A  | A  | -         | - | - | - | - | - |
| A5107 | Dispenser, Glove, Surgical/Examination, Wall Mntd | 1   |       | C  | C         | C  | C  | -         | - | - | - | - | - |
| C04E0 | Cabinet, UCB, 1 Shelf, 1 Drawer, 2 DO, 36x36x22   | 1   |       | A  | A         | A  | A  | -         | - | - | - | - | - |
| C0037 | Rail, Apron, 4x36x1                               | 2   |       | A  | A         | A  | A  | -         | - | - | - | - | - |
| CE040 | Cabinet, W/H, 2 SH, 2 GDO, Sloping Top, 38x36x13  | 1   |       | A  | A         | A  | A  | -         | - | - | - | - | - |
| CS150 | Sink, SS, Single Compartment, 10x19x16 ID         | 1   |       | A  | A         | A  | A  | D         | - | - | - | - | - |
| CT050 | Countertop, Stainless Steel                       | 1   | 6'-0" | A  | A         | A  | A  | -         | - | - | - | - | - |
| F2010 | Basket, Wastepaper, Step-On                       | 1   |       | C  | C         | C  | C  | -         | - | - | - | - | - |
| M3073 | Container, Biohazard Waste, Step-on, Fire Safe    | 1   |       | C  | C         | C  | C  | -         | - | - | - | - | - |
| P2000 | Eyewash, Wall Mounted, Hands-Free                 | 1   |       | A  | A         | A  | A  | B         | - | - | - | - | - |
| P2450 | Valve, Mixing, Thermostatic                       | 1   |       | A  | A         | A  | A  | A         | - | - | - | - | - |
| S0125 | Sterilizer, Stm, VAC, 1DO, CAB, 16x16x26 Chamber  | 1   |       | A  | A         | A  | A  | B         | F | - | A | - | - |

|  |                 |                   |                |
|--|-----------------|-------------------|----------------|
| <b>Room Description:</b> Sterile Processing, Surgical Services (ORSR1) | <b>NSF:</b> 150 | <b>ORSR1</b>      |                |
| <b>Sheet Description:</b> Equipment Schedule                           | <b>Scale:</b>   | Sheet<br><b>5</b> | of<br><b>5</b> |