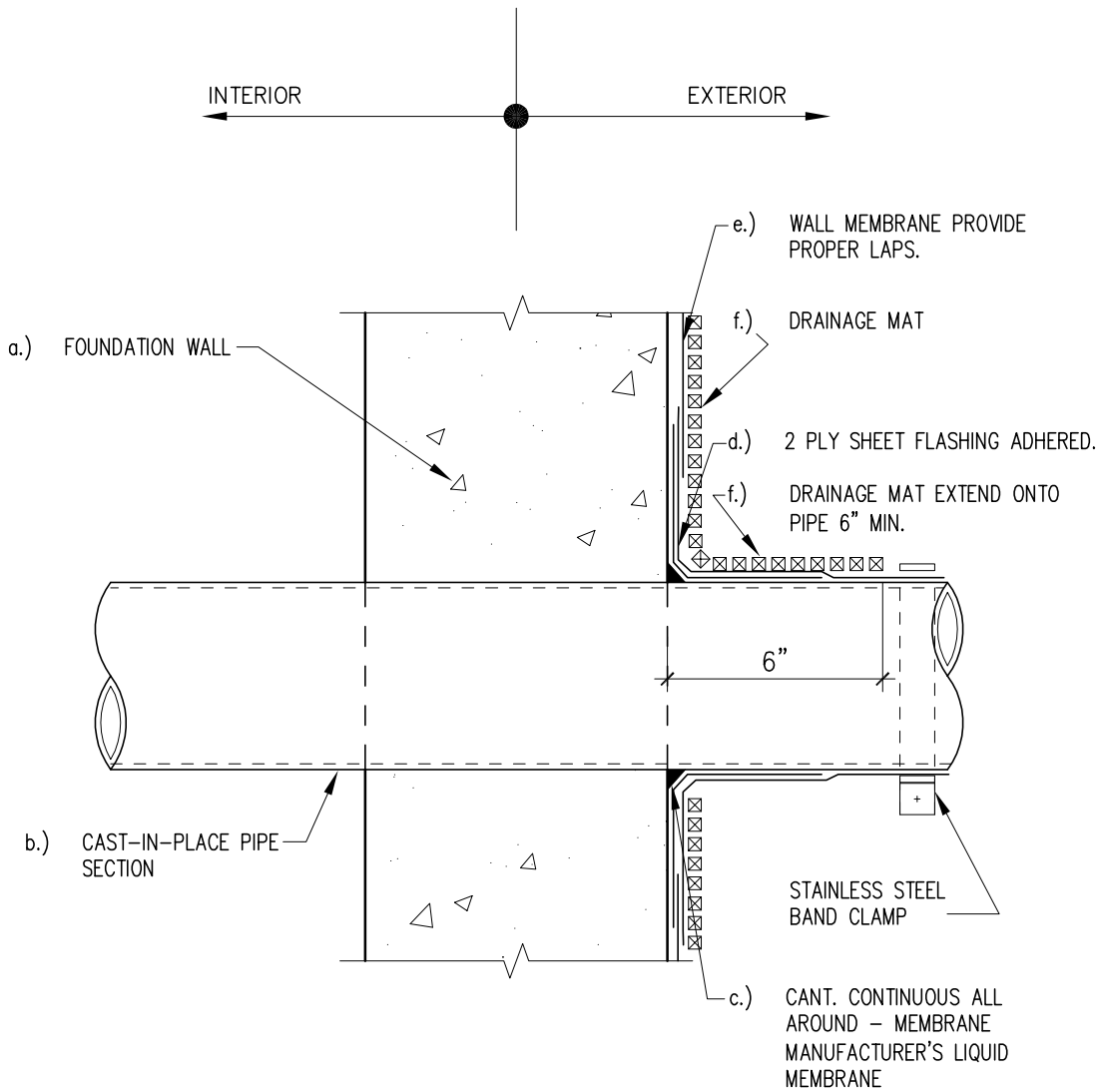


Notes: Component Functions

- a.) Resists earth loads transfers bldg loads to footer
- b.) Conveys fluids to occupied space
- c.) Reduces stress concentration for membrane flashing
- d./e.) Protects joint/wall against water leakage.
- f.) Remove vagrant water to subdrain system.



NOTE:
REINFORCING STEEL NOT SHOWN FOR CLARITY.

ELEVATOR VIEW THRU WALL

CONCEPTUAL - NOT FOR CONSTRUCTION

1.2.5

FOUNDATION WALL -
PIPE PENETRATION
DETAIL
WITHOUT SLEEVE