

Tool Workflow Part 2: Determine Required Program Space for RRTP

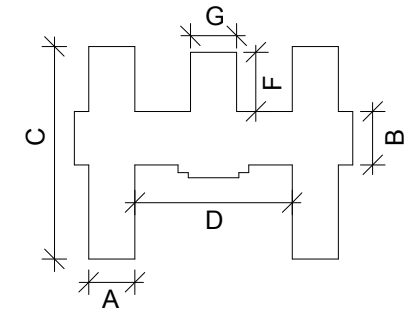
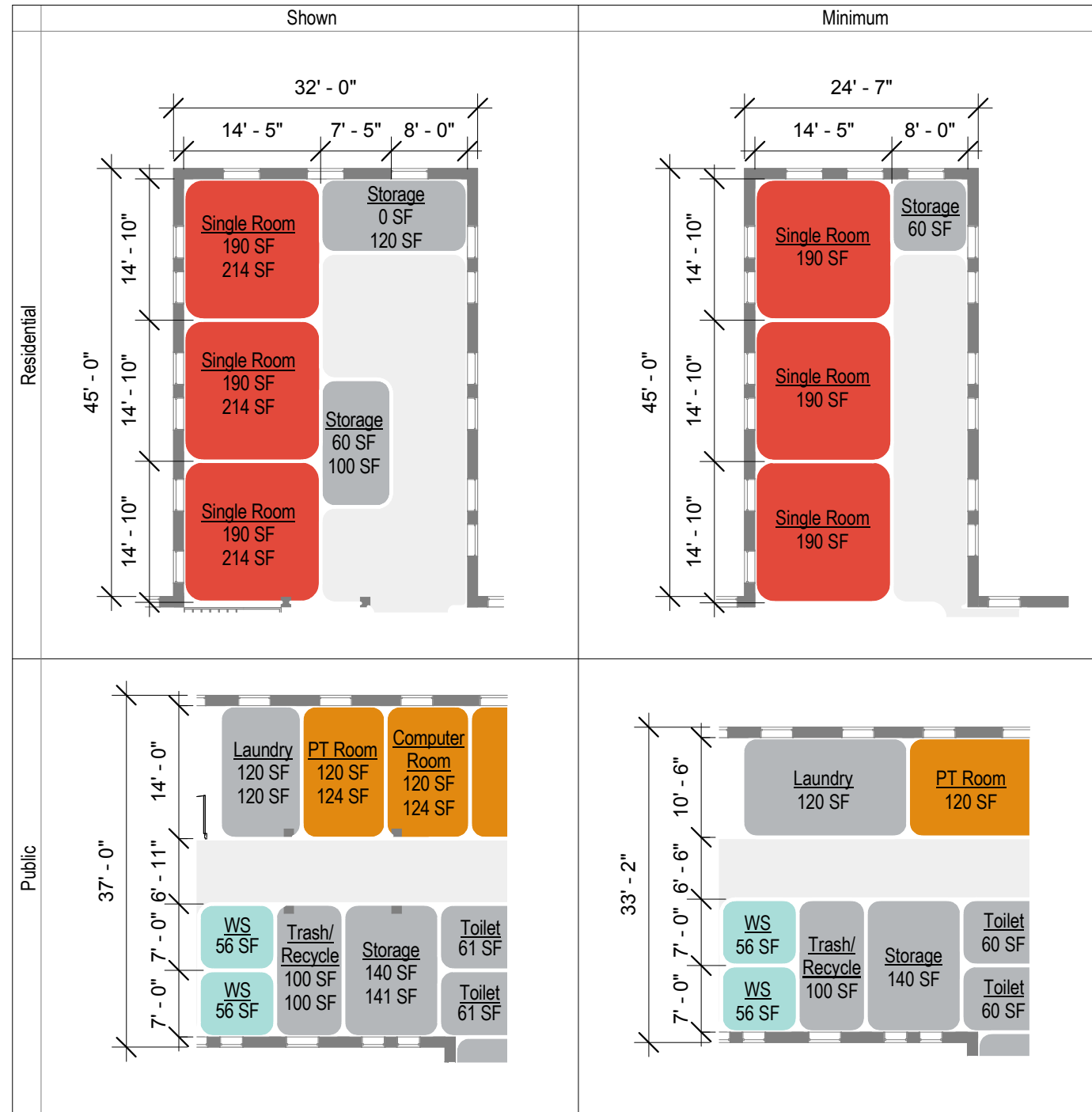
- Determine required DGSF for RRTP by multiplying DGSF Per Resident (See Table 1.1) by required number of residents (16-17). *(Enter Requirements into Tool)*
 - Designer should reference the Space Planning Criteria, Chapter 312, following the functional program.
- Check for RRTP fatal flaws
 - Patient corridors should be a minimum of 8'-0" wide. *(Enter min. width of corridor into tool.)*
 - Dimension A must be greater than or equal to 24'-7" to accommodate Single Resident Rooms
 - Dimension B must be greater than or equal to 33'-2" to accommodate double loaded corridor with Support spaces
- Tool generates number of residents that can be fit into building. *(Tool Output)*

Table 1.0 - Department Gross Square Footage in Chillicothe Building 30 - RRTP Program

DGSF (per level)
12718 SF

Table 1.1 - DGSF per Resident within RRTP

	per 16 Residents		per 17 Residents	
	Req. DGSF	Shown DGSF	Req. DGSF	Shown DGSF
per Resident	720 SF	795 SF	682 SF	753 SF
Total	11518 SF	12718 SF	11598 SF	12798 SF



Key Plan with Exterior Dimensions

Bldg. 30 Tool Dimensions

- A : 32' - 0"
- B : 37' - 0"
- C : 148' - 0"
- D : 109' - 0"
- F : 41' - 0"
- G : 32' - 0"

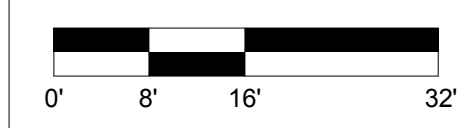
- STAFF AND ADMINISTRATION AREA
- RESIDENTIAL HOME AREA
- SUPPORT AREA
- EXISTING TO REMAIN
- NEW VERTICAL CIRCULATION
- STORAGE/UTILITY
- CIRCULATION
- OFFICE SUPPORT

Building 30 - Chillicothe, OH VA Medical Center Campus

NIBS/VA HISTORIC PRESERVATION REUSE INITIATIVE

Residential Rehabilitation Treatment Program (RRTP) Prototype Workflow

05/03/2017

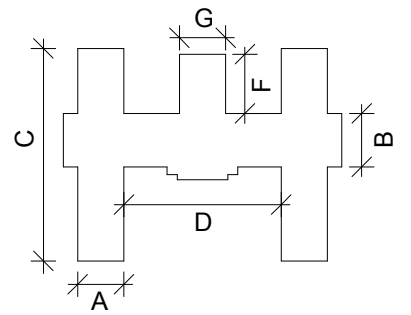


Prototype Program Schedule

RRTP Prototype Program Schedule			
Name	Required Net Area	Prototype Area	Difference
Circulation			
Circulation	4087 SF	4382 SF	295 SF
FA.2			
Consult Room	120 SF	120 SF	0 SF
Reception	260 SF	264 SF	4 SF
Toilet	120 SF	122 SF	2 SF
FA.3			
Computer Room	120 SF	124 SF	4 SF
Custodial	60 SF	103 SF	43 SF
Laundry	120 SF	120 SF	0 SF
Lounge	360 SF	447 SF	87 SF
Multi - Purpose	300 SF	300 SF	0 SF
Quiet Room	120 SF	120 SF	0 SF
Toilet	60 SF	60 SF	0 SF
Waiting	125 SF	125 SF	0 SF
FA.3 - 14 Residential Units			
Bariatric Single Room	245 SF	294 SF	49 SF
Double Room	270 SF	330 SF	60 SF
Multiple Living Unit	470 SF	631 SF	161 SF
Single Room	2090 SF	2293 SF	203 SF
FA.4			
Data/Tel	80 SF	100 SF	20 SF
Storage	40 SF	120 SF	80 SF
Storage	140 SF	141 SF	1 SF
Storage	180 SF	198 SF	18 SF
Trash/ Recycle	100 SF	100 SF	0 SF
WS	56 SF	56 SF	0 SF
FA.5			
Locker	80 SF	87 SF	7 SF
Lounge	80 SF	93 SF	13 SF
Office	100 SF	100 SF	0 SF
Office	120 SF	120 SF	0 SF
Support	0 SF	70 SF	70 SF
Toilet	60 SF	60 SF	0 SF
WS	280 SF	281 SF	1 SF

RRTP Prototype Program Schedule			
Name	Required Net Area	Prototype Area	Difference
FA.6			
Dining	200 SF	200 SF	0 SF
Job Devel.	120 SF	123 SF	3 SF
OT Room	125 SF	129 SF	4 SF
Patient Education	300 SF	300 SF	0 SF
PT Room	120 SF	124 SF	4 SF
Recreation	200 SF	200 SF	0 SF
Vending	50 SF	84 SF	34 SF
FA.8			
Storage	60 SF	100 SF	40 SF
Storage	100 SF	100 SF	0 SF
Total DGSF	11518 SF	12718 SF	1200 SF

Areas in Prototype Layout excluded from DGSF:	
Name	Prototype Area (shown on floor plan)
Building Support	
Elevator	83 SF
Open Porch	1242 SF
Stair	533 SF
Storage	305 SF
Total Building Support Area	2162 SF



Key Plan with Exterior Dimensions

Bldg. 30 Tool Dimensions

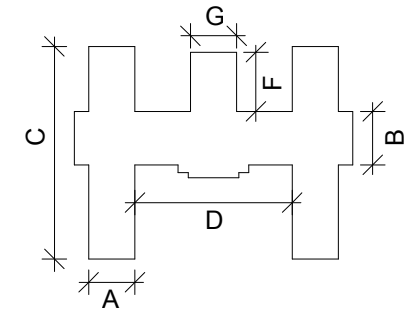
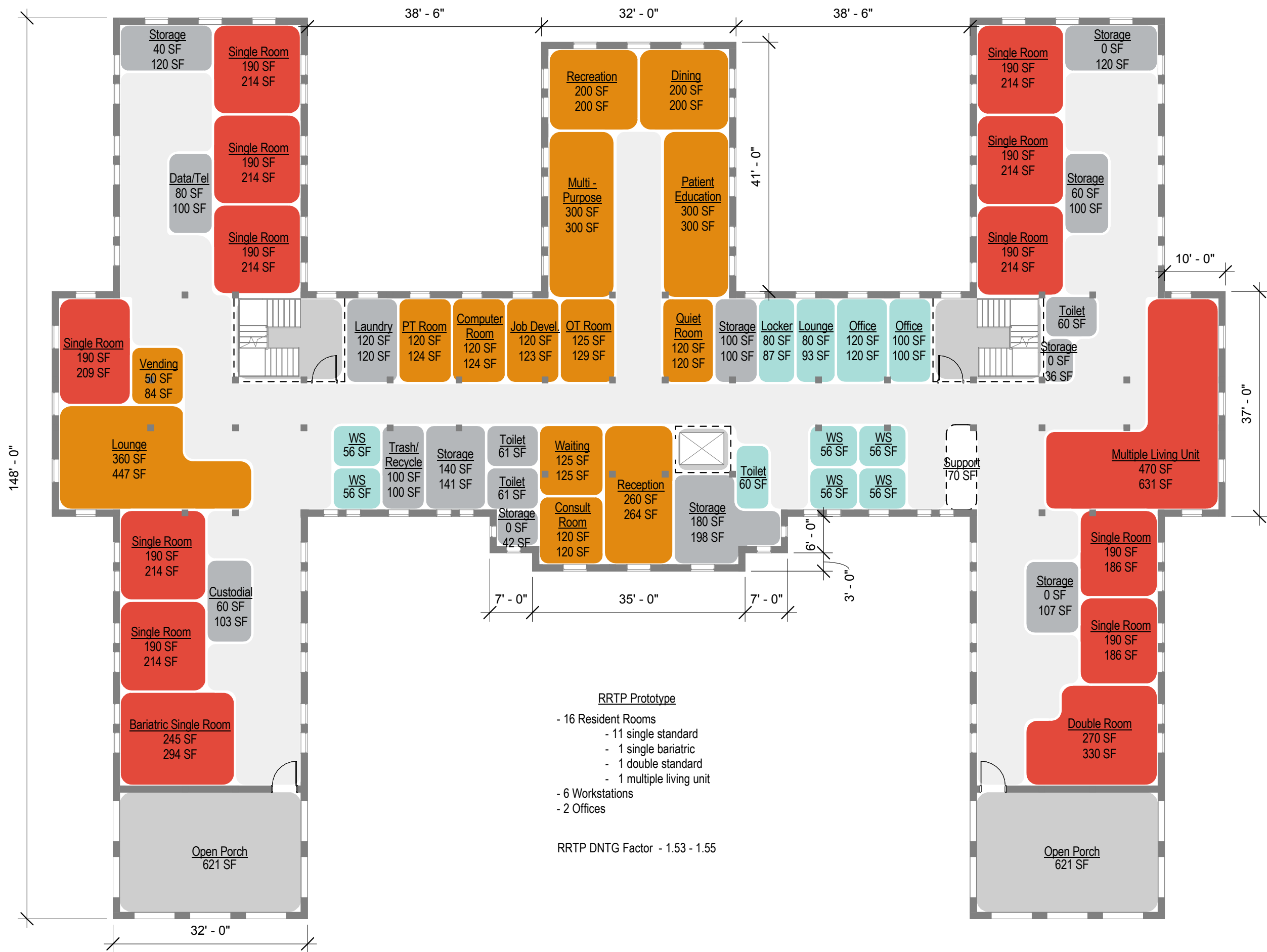
A : 32' - 0"
 B : 37' - 0"
 C : 148' - 0"
 D : 109' - 0"
 F : 41' - 0"
 G : 32' - 0"

Building 30 - Chillicothe, OH VA
 Medical Center Campus

NIBS/VA HISTORIC
 PRESERVATION REUSE
 INITIATIVE

Residential Rehabilitation
 Treatment Program (RRTP)
 Prototype Program

05/03/2017



- Bldg. 30 Tool Dimensions**
- A : 32' - 0"
 - B : 37' - 0"
 - C : 148' - 0"
 - D : 109' - 0"
 - F : 41' - 0"
 - G : 32' - 0"

- STAFF AND ADMINISTRATION AREA
 - RESIDENTIAL HOME AREA
 - SUPPORT AREA
 - EXISTING TO REMAIN
 - NEW VERTICAL CIRCULATION
 - STORAGE/UTILITY
 - CIRCULATION
 - OFFICE SUPPORT
- Office Room Use
150 SF Required SF
200 SF Shown SF

RRTP Prototype

- 16 Resident Rooms
 - 11 single standard
 - 1 single bariatric
 - 1 double standard
 - 1 multiple living unit
- 6 Workstations
- 2 Offices

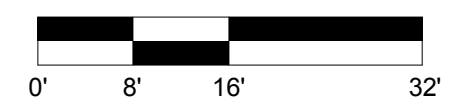
RRTP DNTG Factor - 1.53 - 1.55

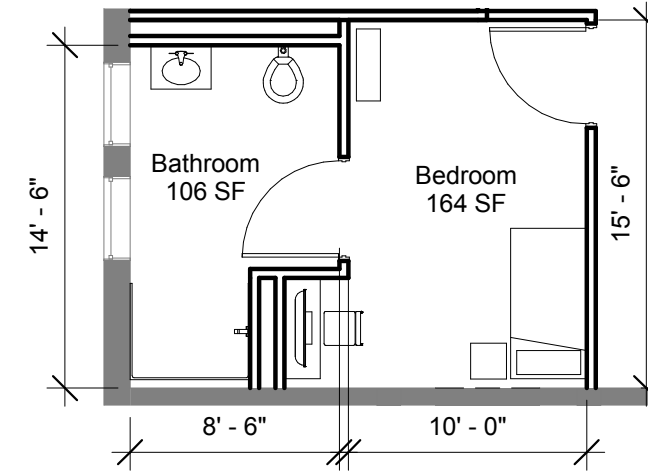
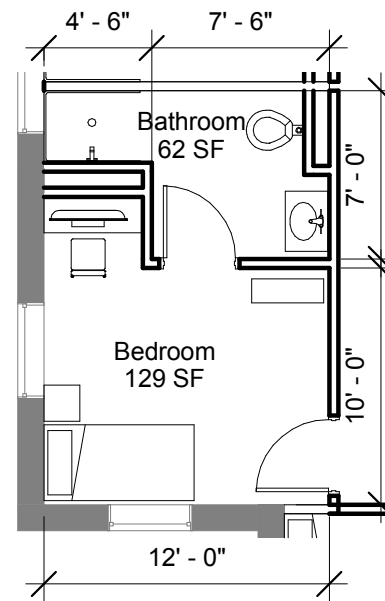
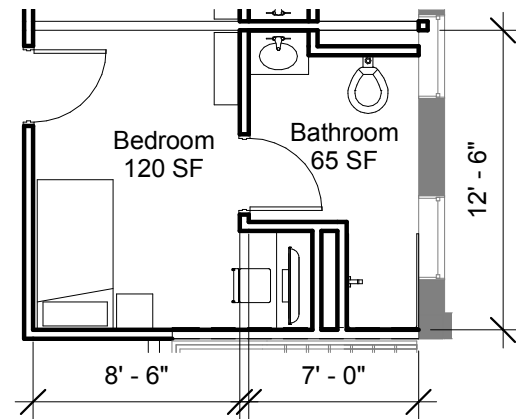
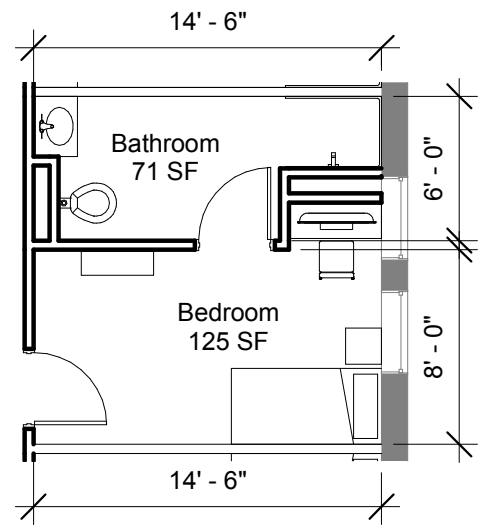
Building 30 - Chillicothe, OH VA Medical Center Campus

NIBS/VA HISTORIC PRESERVATION REUSE INITIATIVE

Residential Rehabilitation Treatment Program (RRTP) Prototype Floor Plan

05/03/2017





① Single A
1/8" = 1'-0"

② Single B
1/8" = 1'-0"

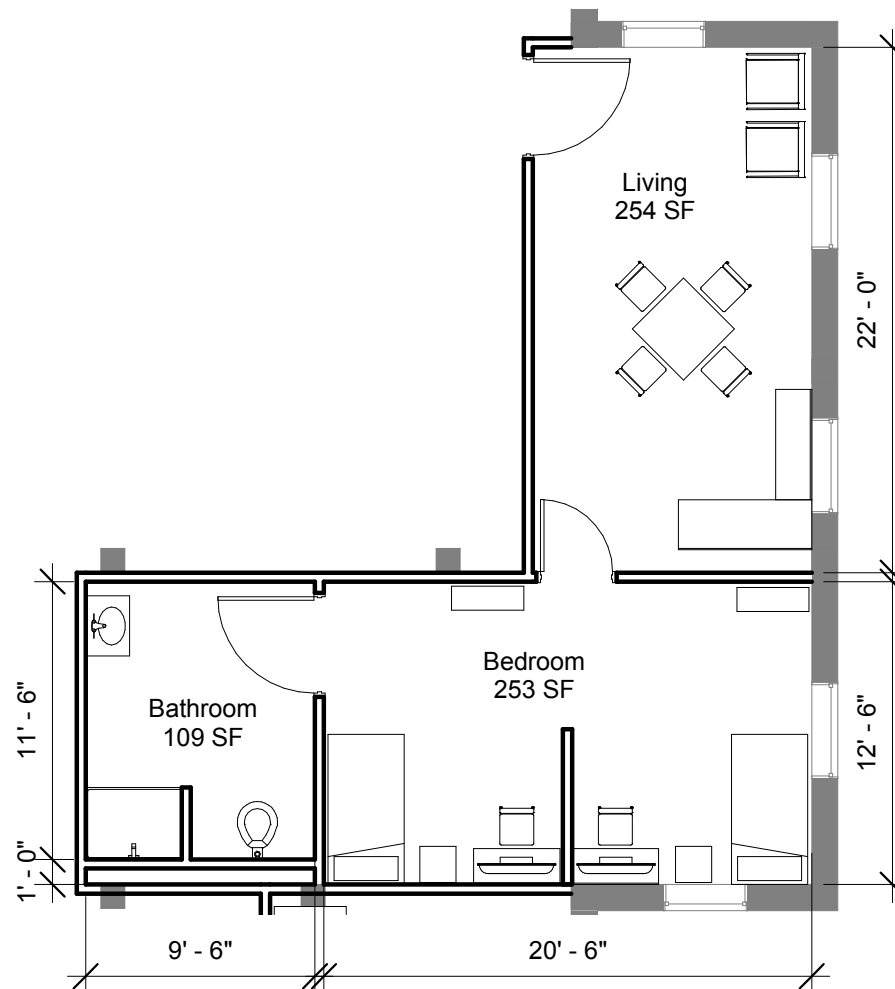
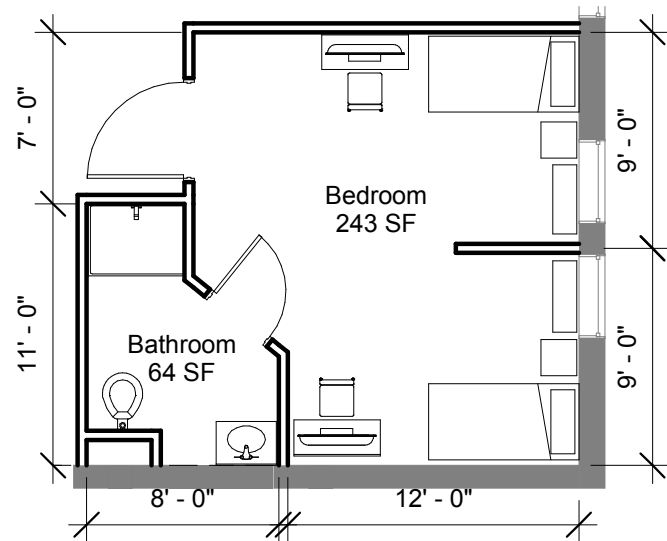
③ Single B - Expanded
1/8" = 1'-0"

④ Bariatric Single
1/8" = 1'-0"

Notes:

1) Room layouts are adaptations of the bedroom layouts in Mental Health Design Guide Sections 6.1-6.6. They demonstrate different schemes that could fit into existing building wings of varying widths. (Source: *Mental Health Facilities Design Guide, U.S. Department of Veterans Affairs*)

2) See Residential Rehabilitation Treatment Program (RRTP) Prototype Workflow sheet to see how each scheme aggregates in existing building wing.



⑤ Double A
1/8" = 1'-0"

⑥ Multiple Living Unit
1/8" = 1'-0"

NIBS/VA HISTORIC
PRESERVATION REUSE
INITIATIVE

RRTP Room Layouts

05/03/2017

