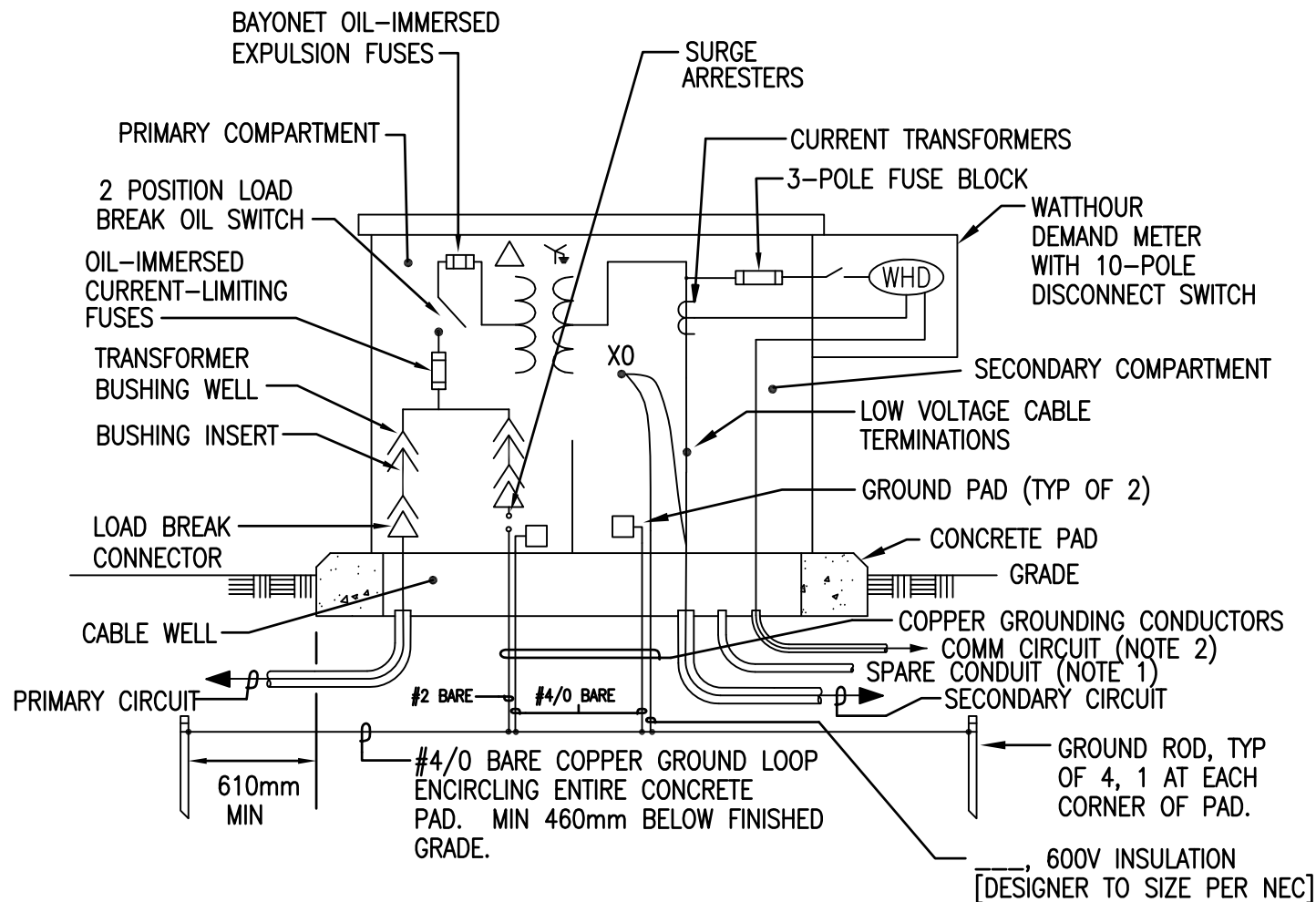


SECTION 26 12 19.10

THREE-PHASE, LIQUID-FILLED PAD-MOUNTED
TRANSFORMERS

INDEX OF DETAILS - 08/23 (Rev 11/13/13)

<i>DETAILS</i>	<i>TITLE</i>
PADMDE1	Pad-Mtd Transf - Ungrounded/Single Grnded Prim Syst - With Surge Arresters
PADMDE2	Pad-Mtd Transf - Ungrounded/Single Grnded Prim Syst - Without Surge Arresters
PADMDE3	Pad-Mtd Transf - Multi-Grnded Prim Syst (Delta-Wye) - With Surge Arresters
PADMDE4	Pad-Mtd Transf - Multi-Grnded Prim Syst (Delta-Wye) - Without Surge Arresters
PADMDE5	Pad-Mtd Transf - Multi-Grnded Prim Syst (Wye-Wye) - With Surge Arresters
PADMDE6	Pad-Mtd Transf - Multi-Grnded Prim Syst (Wye-Wye) - Without Surge Arresters



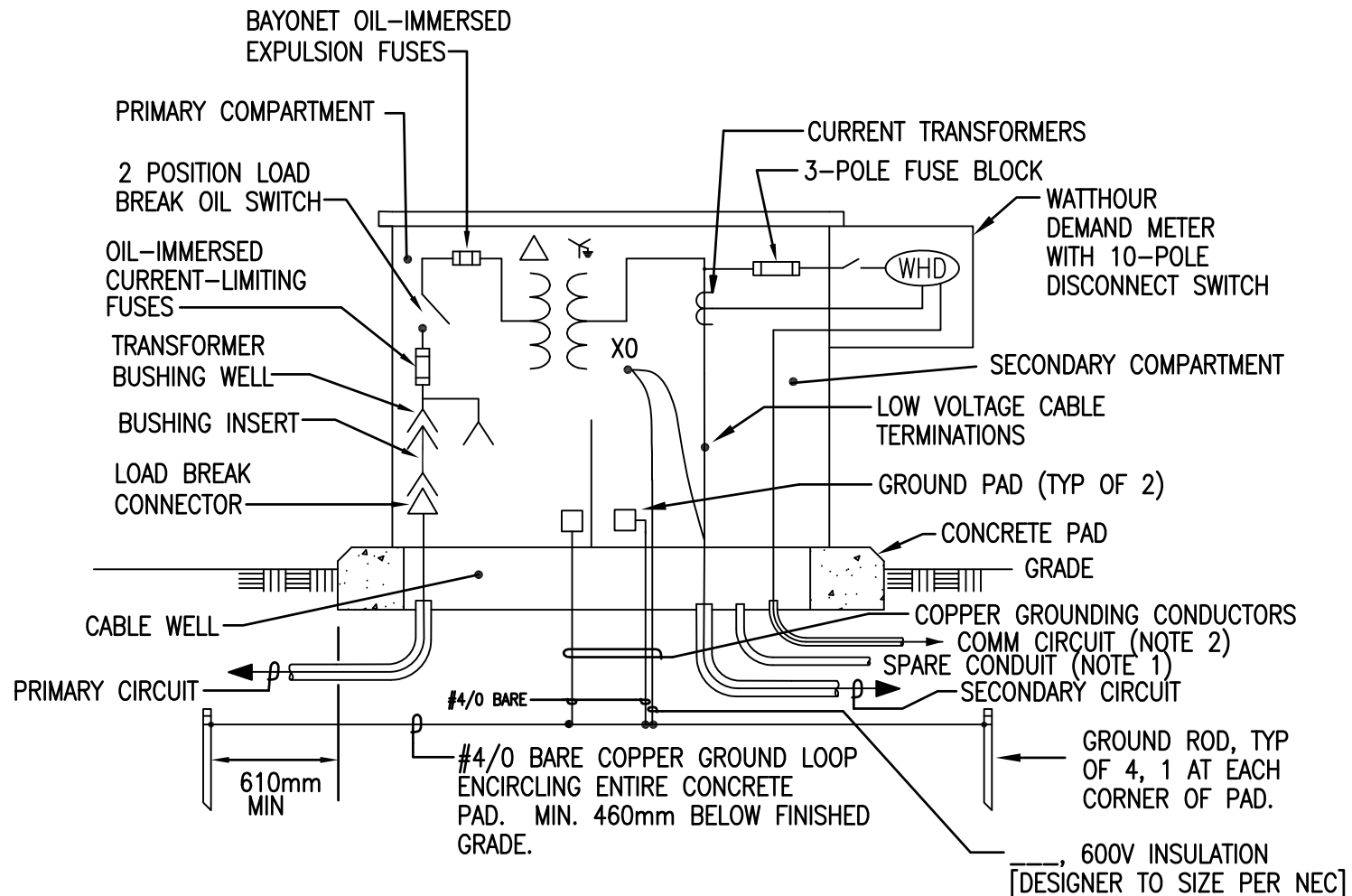
NOTE 1: PROVIDE ONE 27mm SPARE CONDUIT STUBBED-OUT 1.5m FROM PAD.
COORDINATE WITH ACTIVITY FOR ADDITIONAL METERING INPUT (GAS, STEAM OR WATER SYSTEMS).

NOTE 2: PROVIDE THE COMM CIRCUIT TO THE MECHANICAL/ELECTRICAL EQUIPMENT ROOM. COORDINATE WITH ACTIVITY.

PAD-MOUNTED TRANSFORMER DETAIL

NOT TO SCALE

[UNGROUNDED OR SINGLE GROUNDED PRIMARY SYSTEM - WITH SURGE ARRESTERS]



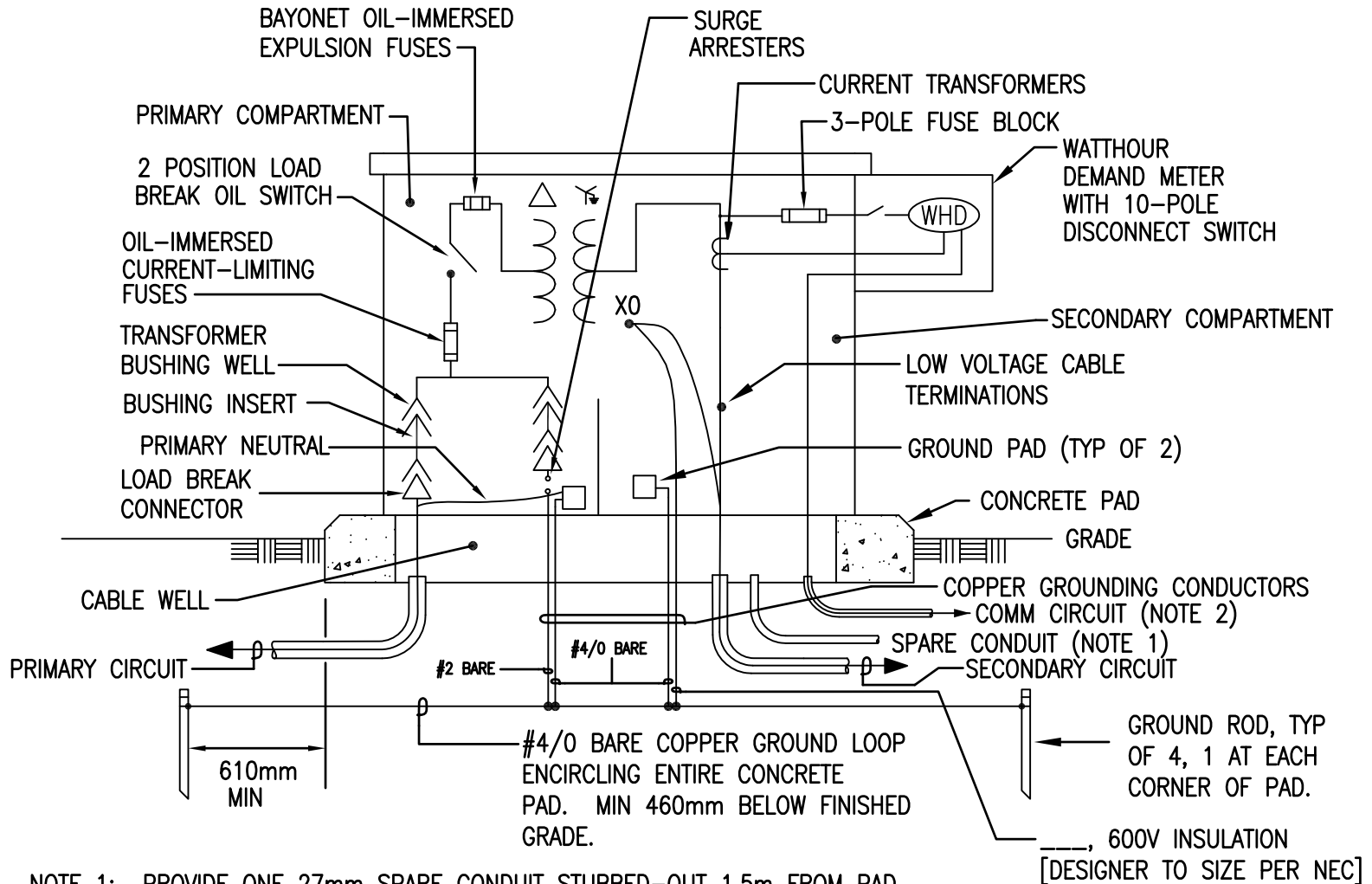
NOTE 1: PROVIDE ONE 27mm SPARE CONDUIT STUBBED-OUT 1.5m FROM PAD. COORDINATE WITH ACTIVITY FOR ADDITIONAL METERING INPUT (GAS, STEAM OR WATER SYSTEMS).

NOTE 2: PROVIDE THE COMM CIRCUIT TO THE MECHANICAL/ELECTRICAL EQUIPMENT ROOM. COORDINATE WITH ACTIVITY.

PAD-MOUNTED TRANSFORMER DETAIL

NOT TO SCALE

[UNGROUNDED OR SINGLE GROUNDED PRIMARY SYSTEM – WITHOUT SURGE ARRESTERS]



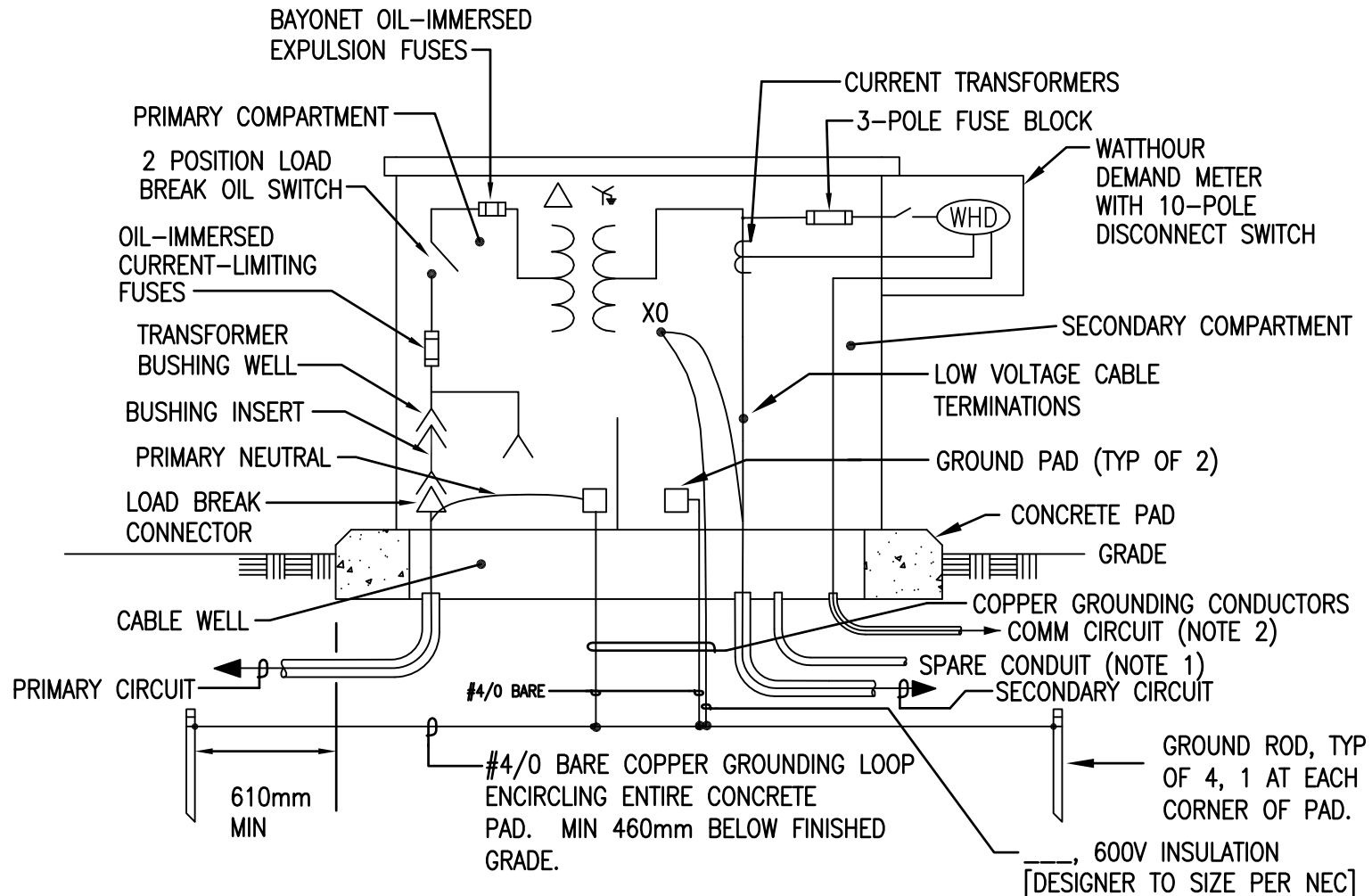
NOTE 1: PROVIDE ONE 27mm SPARE CONDUIT STUBBED-OUT 1.5m FROM PAD. COORDINATE WITH ACTIVITY FOR ADDITIONAL METERING INPUT (GAS, STEAM OR WATER SYSTEMS).

NOTE 2: PROVIDE THE COMM CIRCUIT TO THE MECHANICAL/ELECTRICAL EQUIPMENT ROOM. COORDINATE WITH ACTIVITY.

PAD-MOUNTED TRANSFORMER DETAIL

NOT TO SCALE

[MULTI-GROUNDED PRIMARY SYSTEM (DELTA-WYE) - WITH SURGE ARRESTERS]



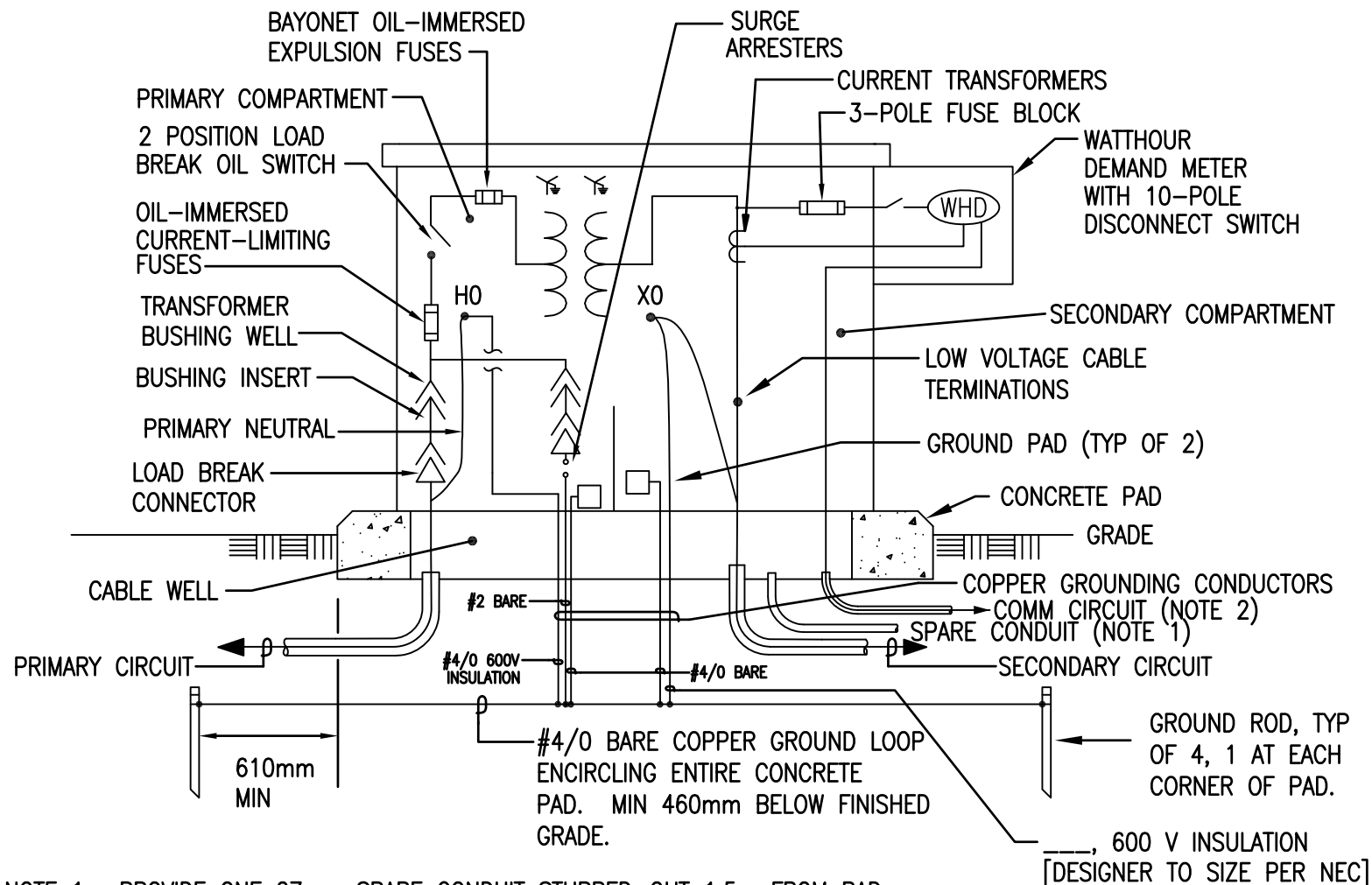
NOTE 1: PROVIDE ONE 27mm SPARE CONDUIT STUBBED-OUT 1.5m FROM PAD. COORDINATE WITH ACTIVITY FOR ADDITIONAL METERING INPUT (GAS, STEAM OR WATER SYSTEMS).

NOTE 2: PROVIDE THE COMM CIRCUIT TO THE MECHANICAL/ELECTRICAL EQUIPMENT ROOM. COORDINATE WITH ACTIVITY.

PAD-MOUNTED TRANSFORMER DETAIL

NOT TO SCALE

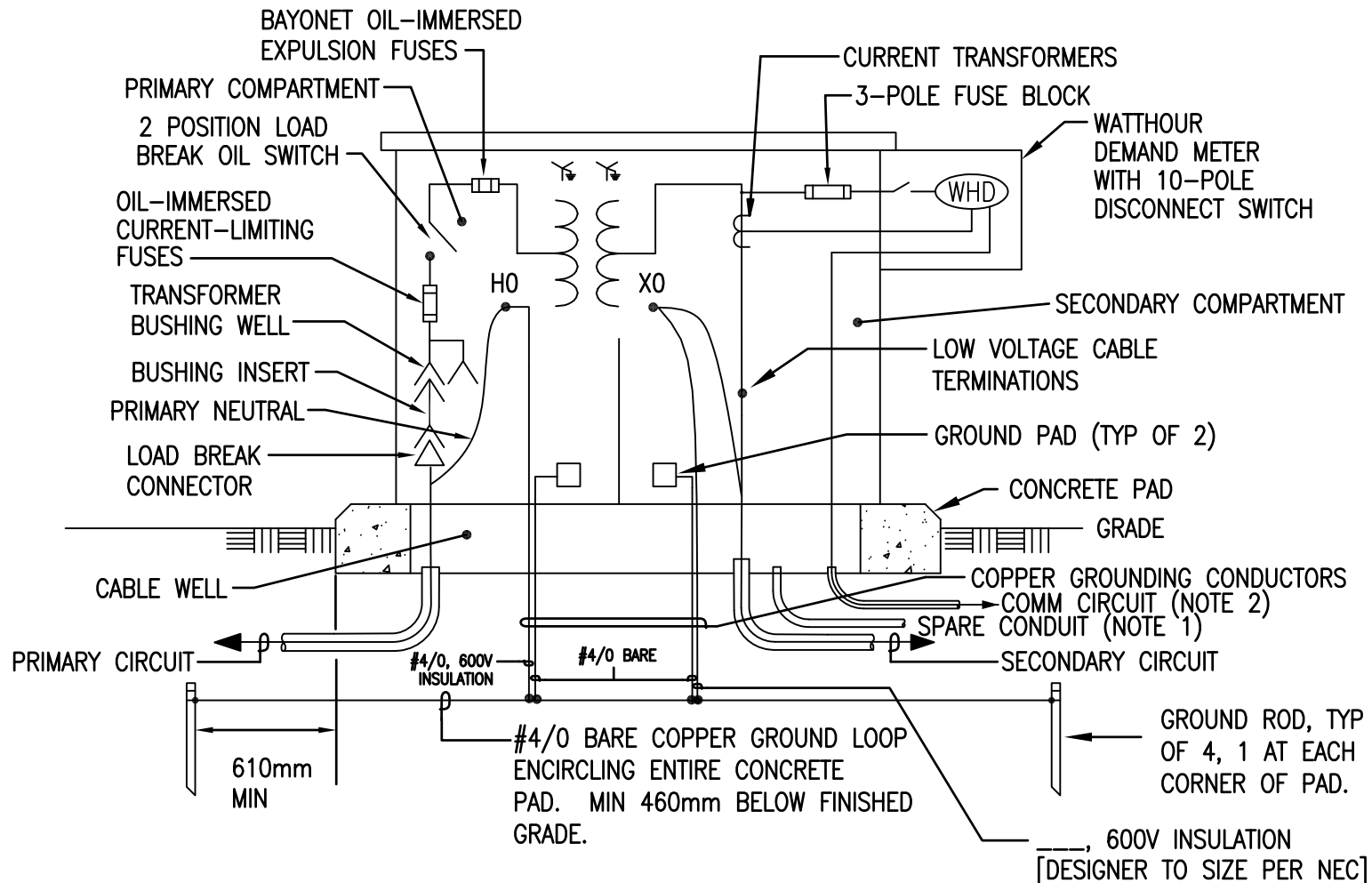
[MULTI-GROUNDED PRIMARY SYSTEM (DELTA-WYE) - WITHOUT SURGE ARRESTERS]



PAD-MOUNTED TRANSFORMER DETAIL

NOT TO SCALE

[MULTI-GROUNDED PRIMARY SYSTEM (WYE-WYE) - WITH SURGE ARRESTERS]



NOTE 1: PROVIDE ONE 27mm SPARE CONDUIT STUBBED-OUT 1.5m FROM PAD. COORDINATE WITH ACTIVITY FOR ADDITIONAL METERING INPUT (GAS, STEAM OR WATER SYSTEMS).

NOTE 2: PROVIDE THE COMM CIRCUIT TO THE MECHANICAL/ELECTRICAL EQUIPMENT ROOM. COORDINATE WITH ACTIVITY.

PAD-MOUNTED TRANSFORMER DETAIL

NOT TO SCALE

[MULTI-GROUNDED PRIMARY SYSTEM (WYE-WYE) - WITHOUT SURGE ARRESTERS]