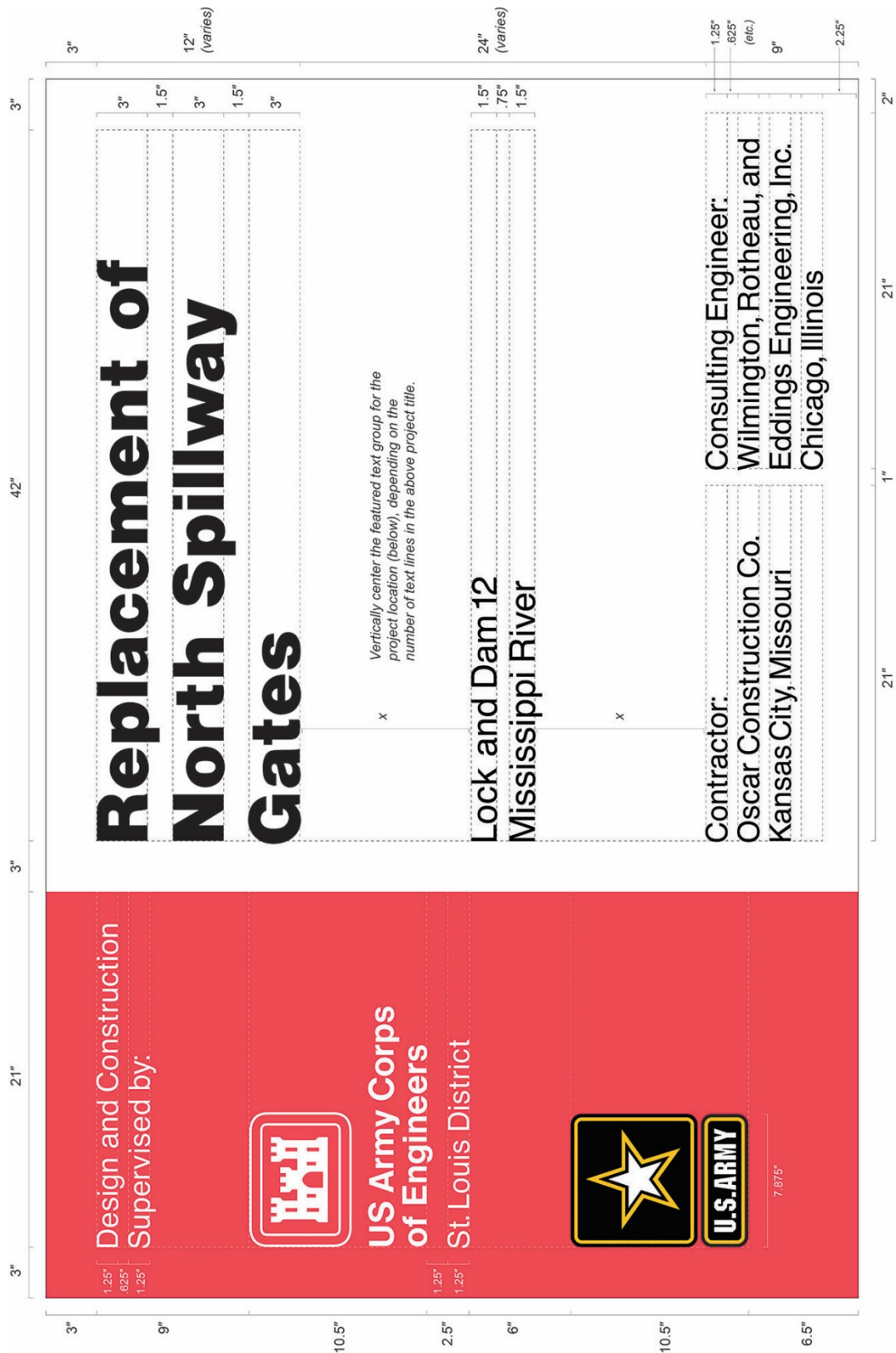
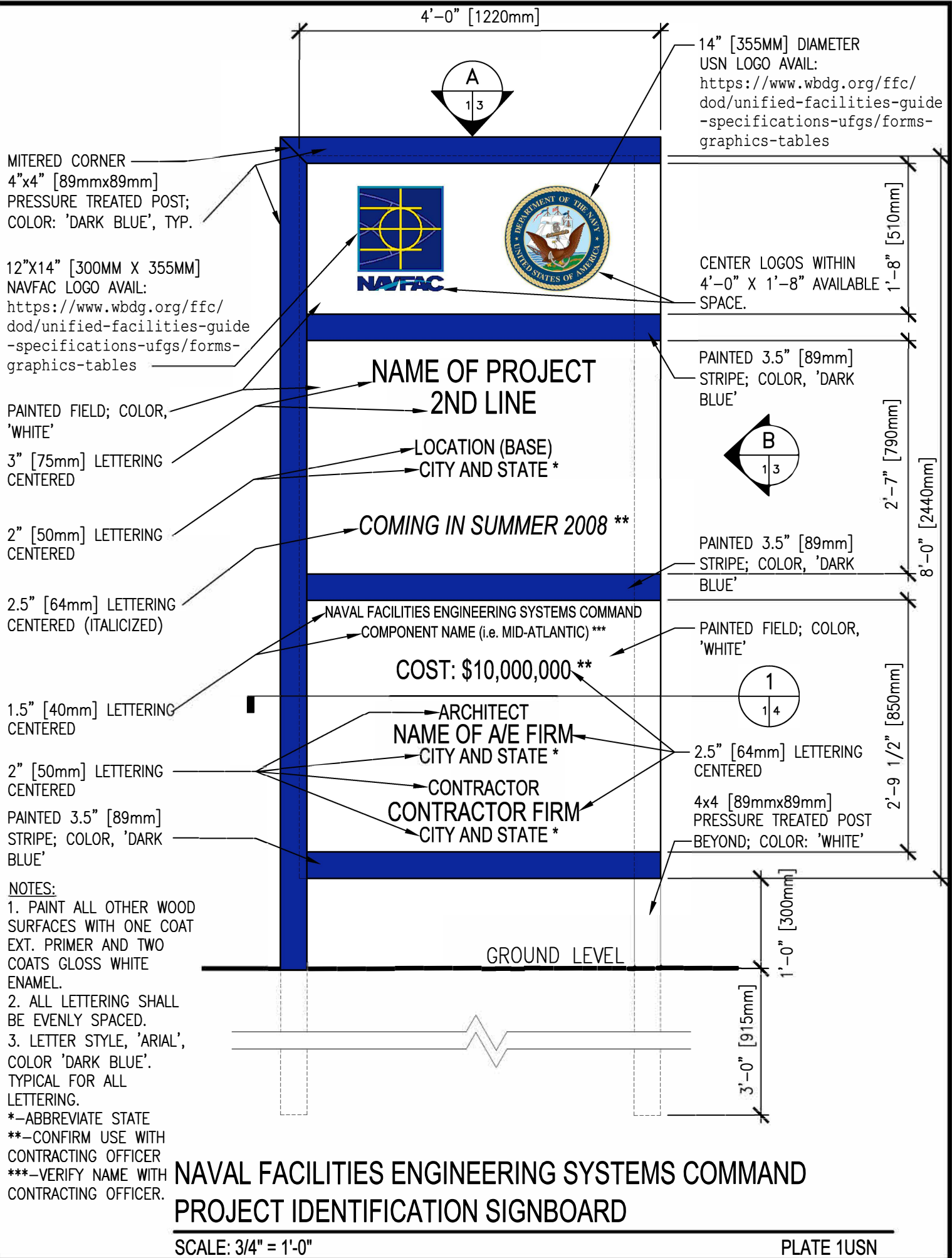
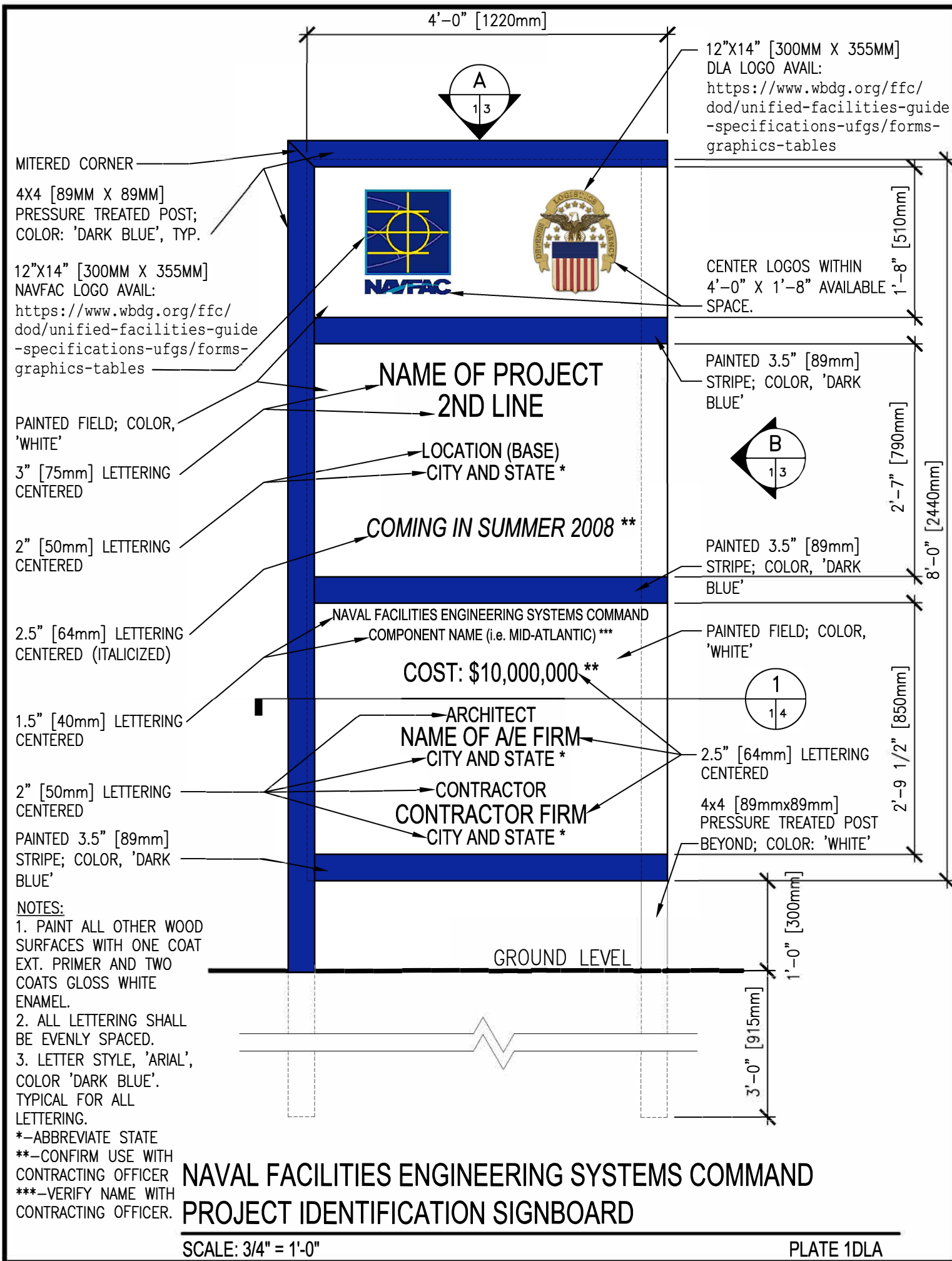


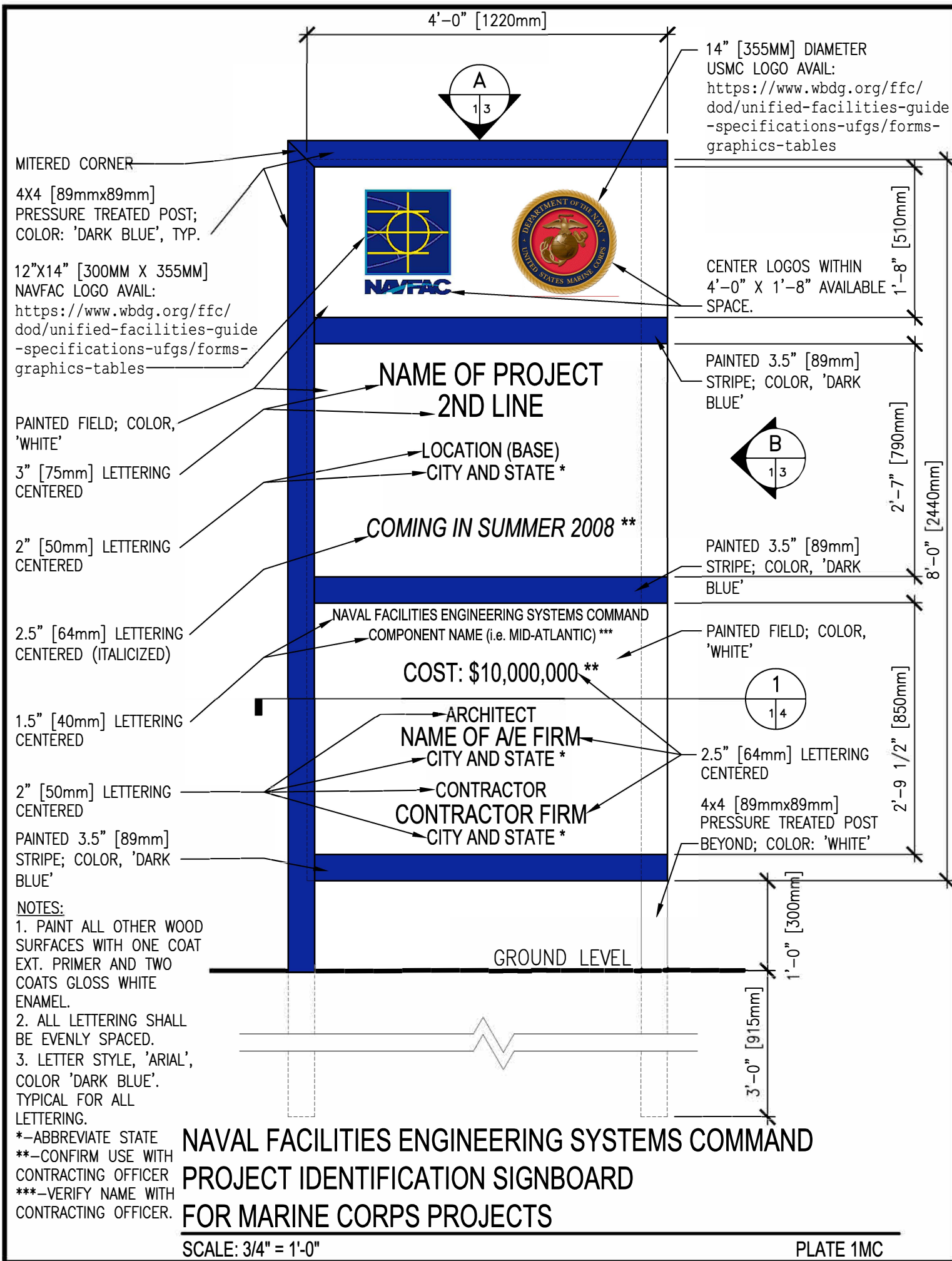
[illegible]

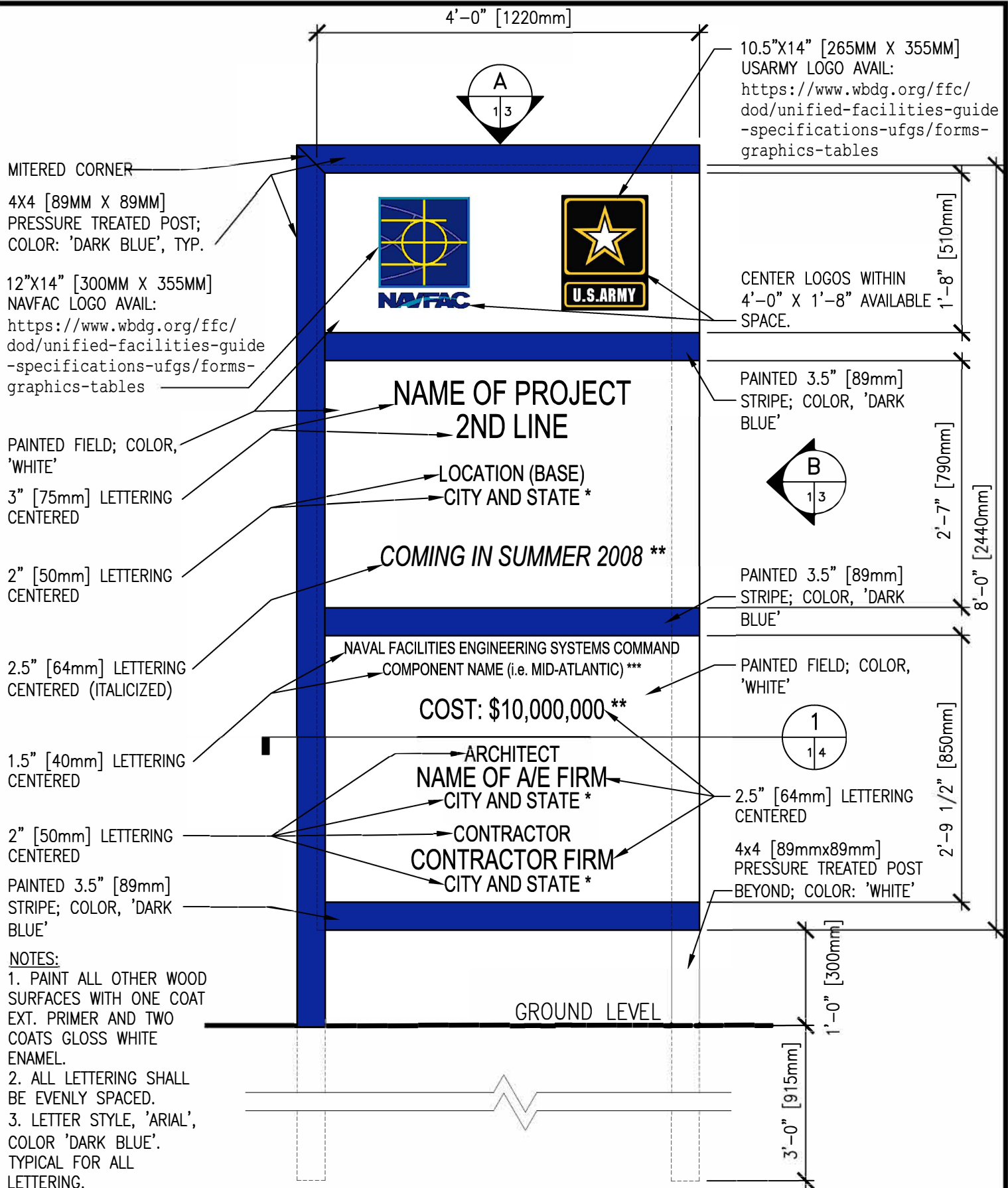
ATTACHMENT B: Example Graphic of Signage with Dimensions for Civil Works Project







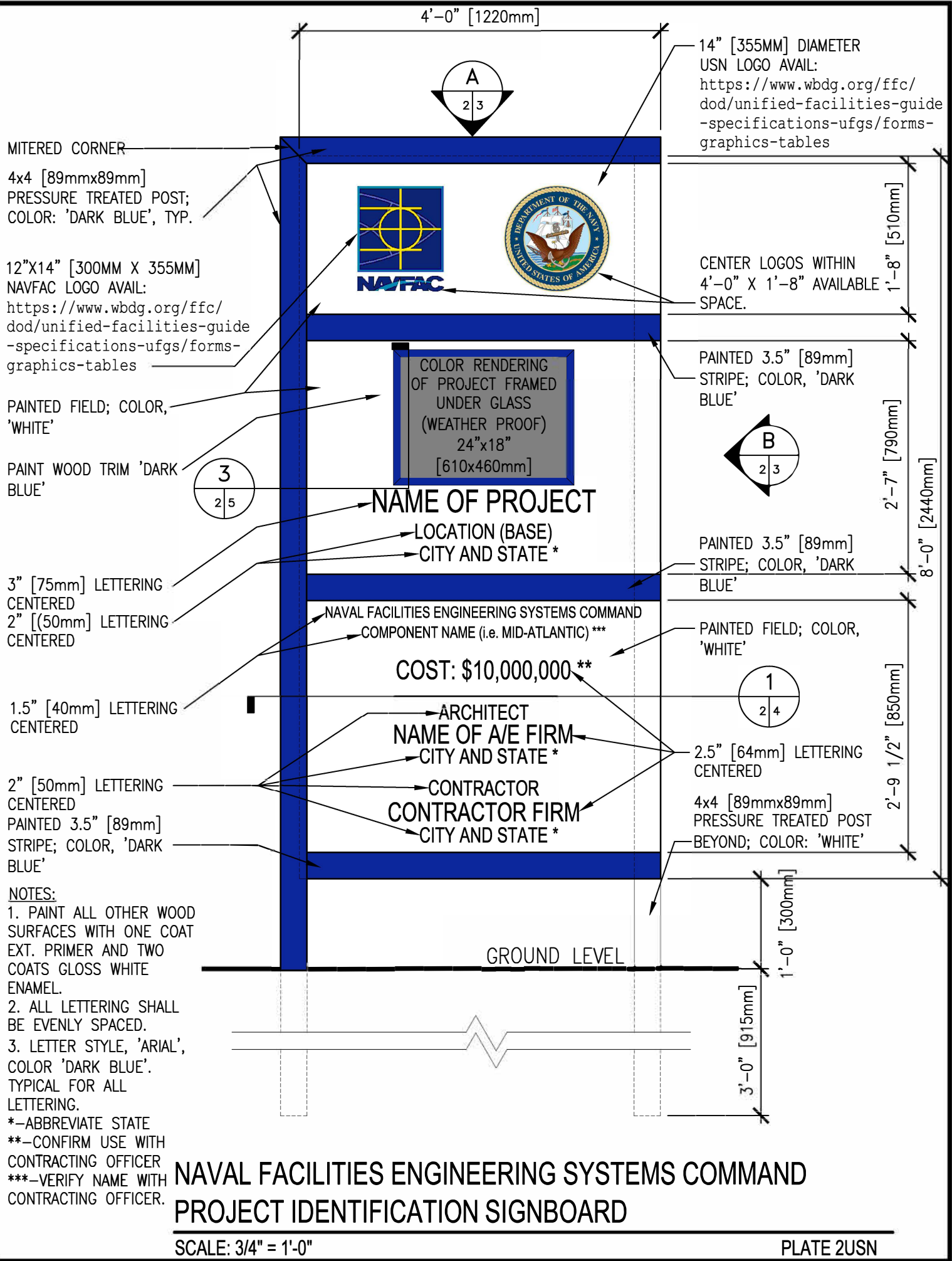


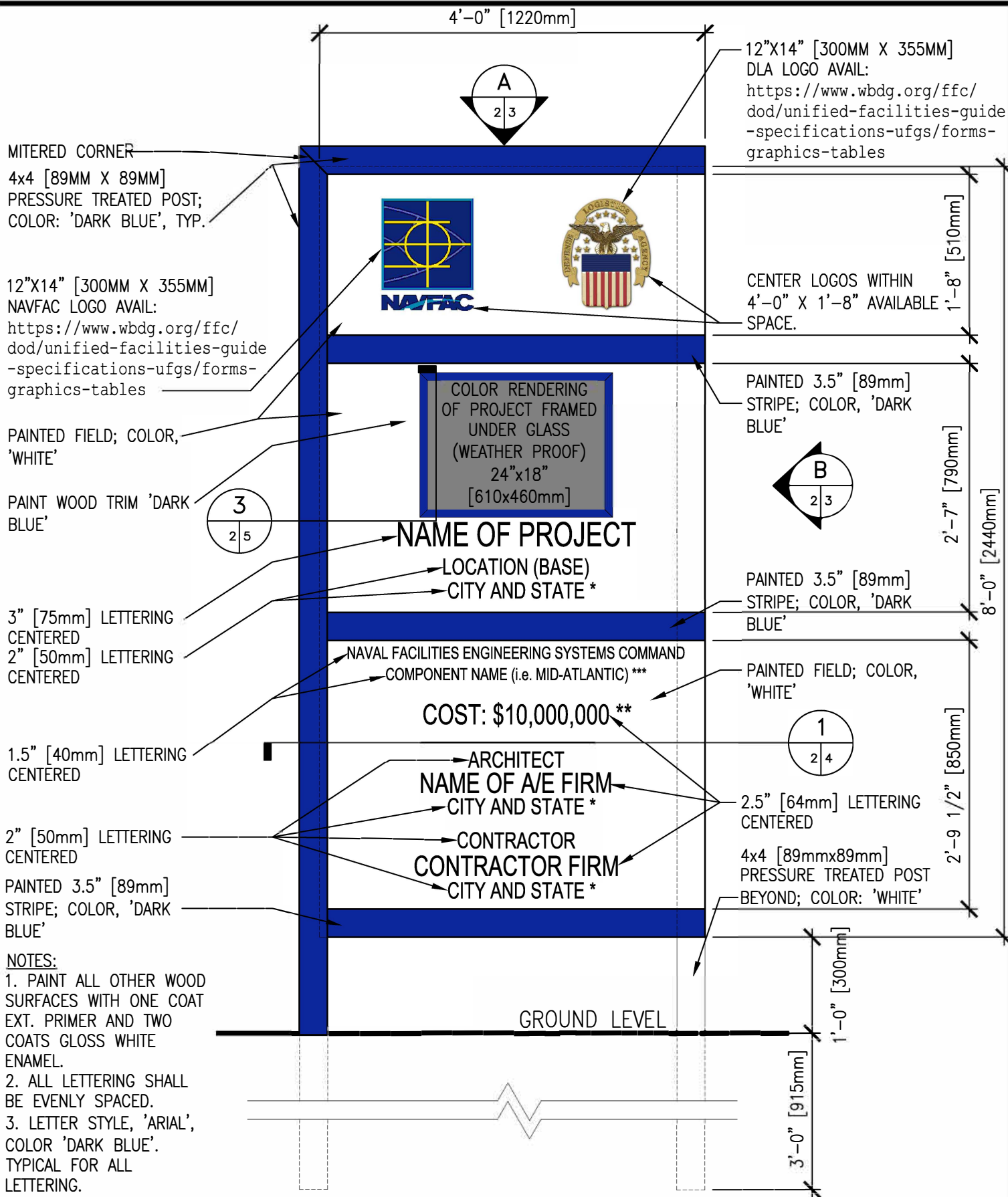


NAVAL FACILITIES ENGINEERING SYSTEMS COMMAND PROJECT IDENTIFICATION SIGNBOARD

SCALE: 3/4" = 1'-0"

PLATE 1USARMY

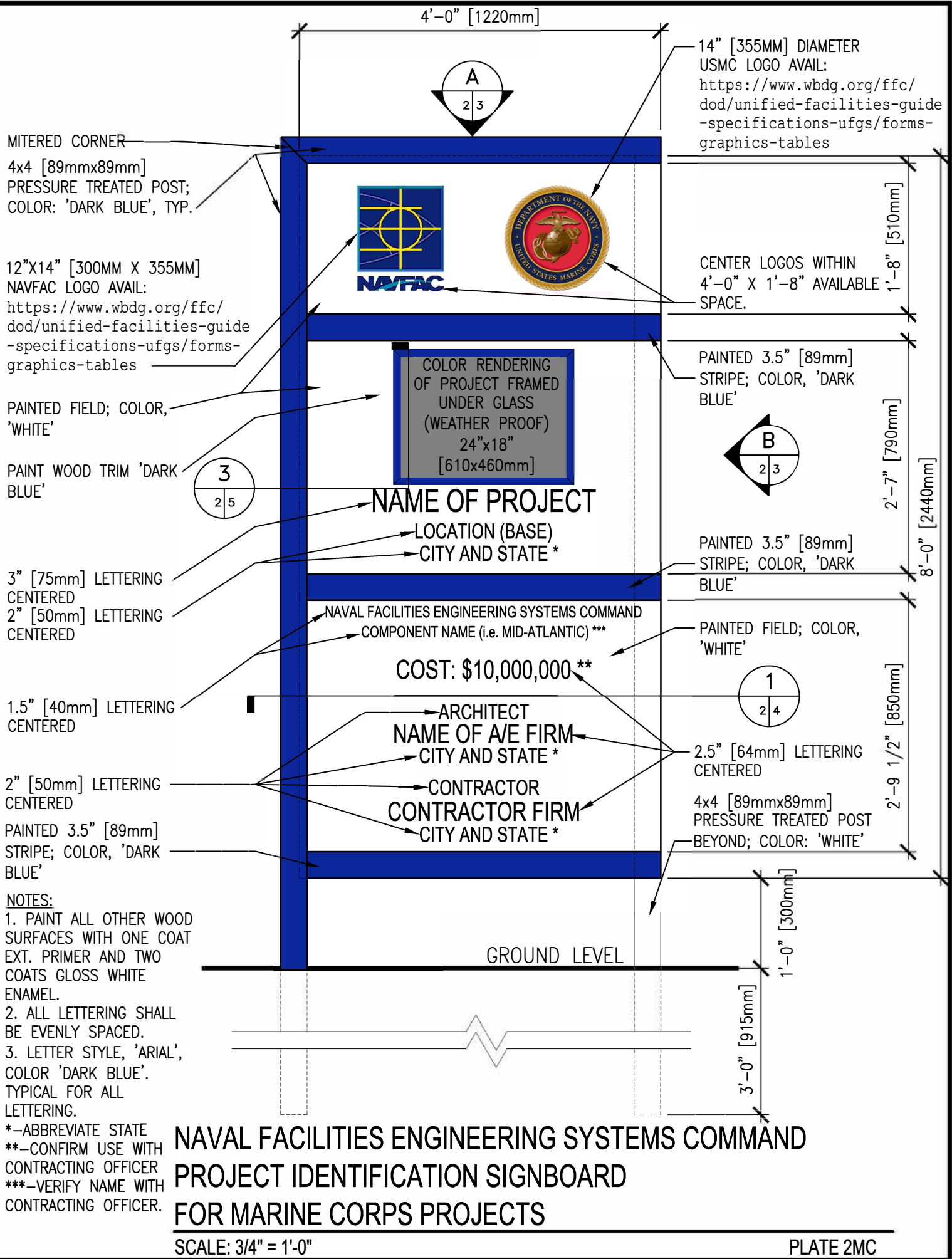


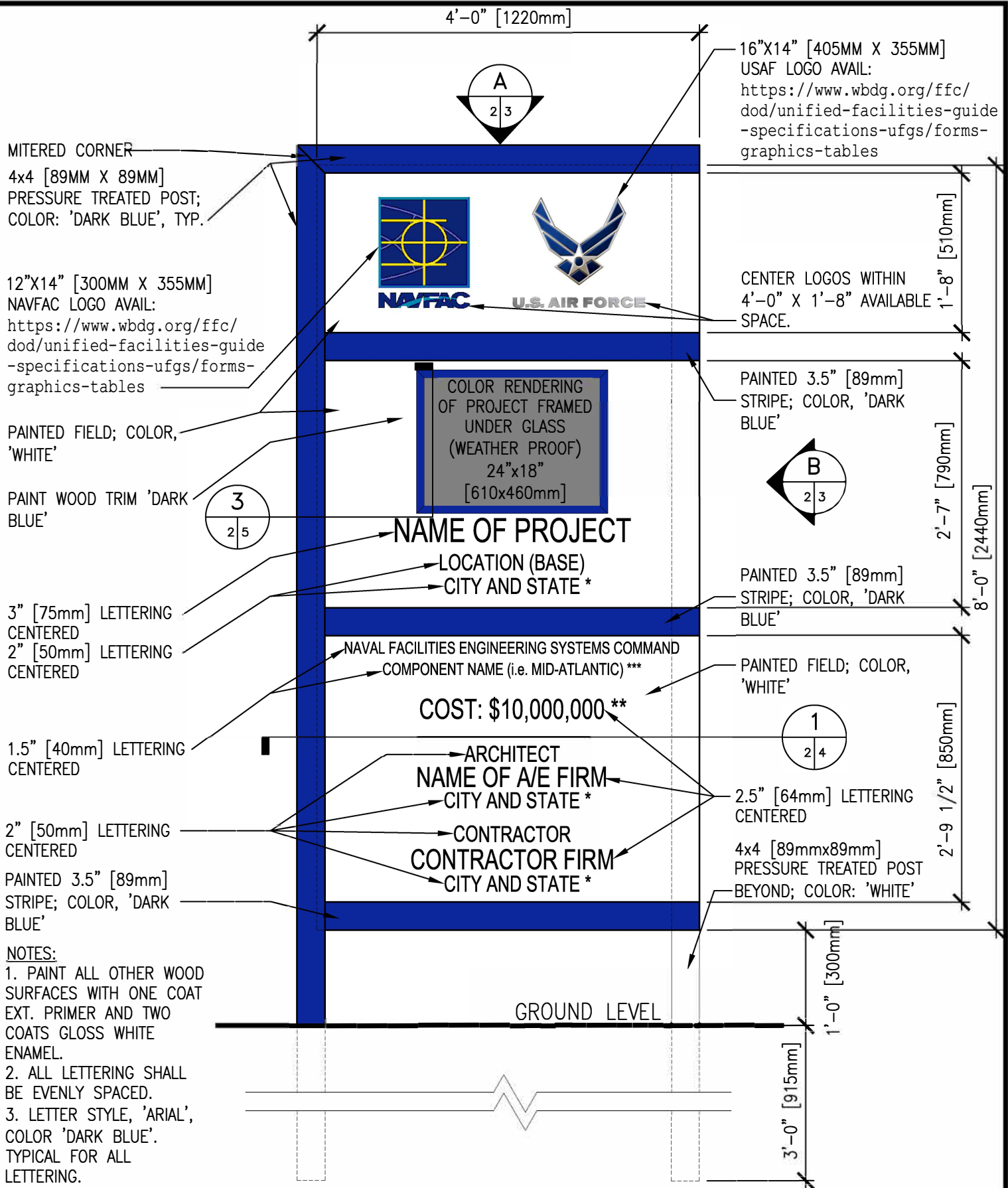


NAVAL FACILITIES ENGINEERING SYSTEMS COMMAND PROJECT IDENTIFICATION SIGNBOARD

SCALE: 3/4" = 1'-0"

PLATE 2DLA

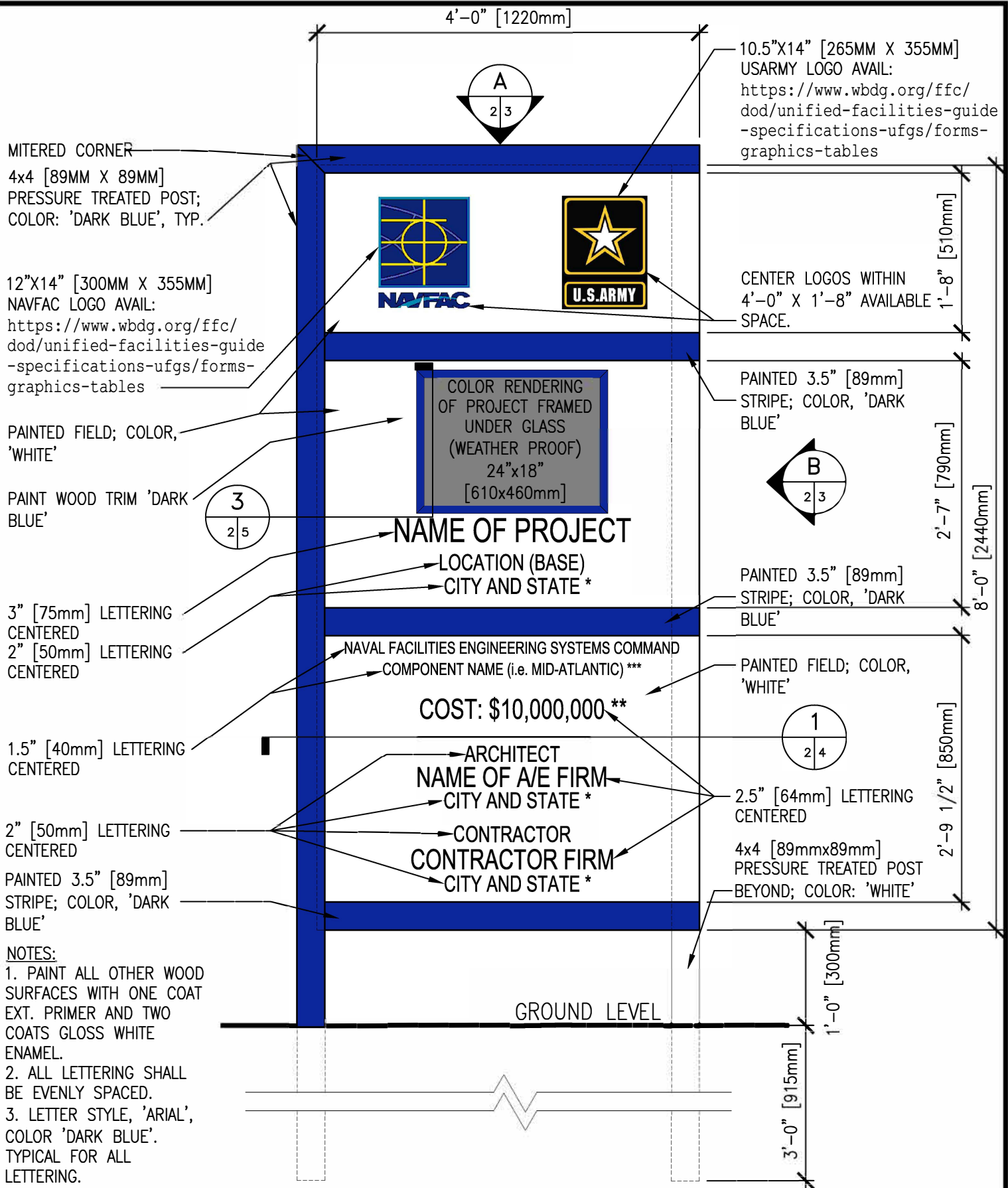




NAVAL FACILITIES ENGINEERING SYSTEMS COMMAND PROJECT IDENTIFICATION SIGNBOARD

SCALE: 3/4" = 1'-0"

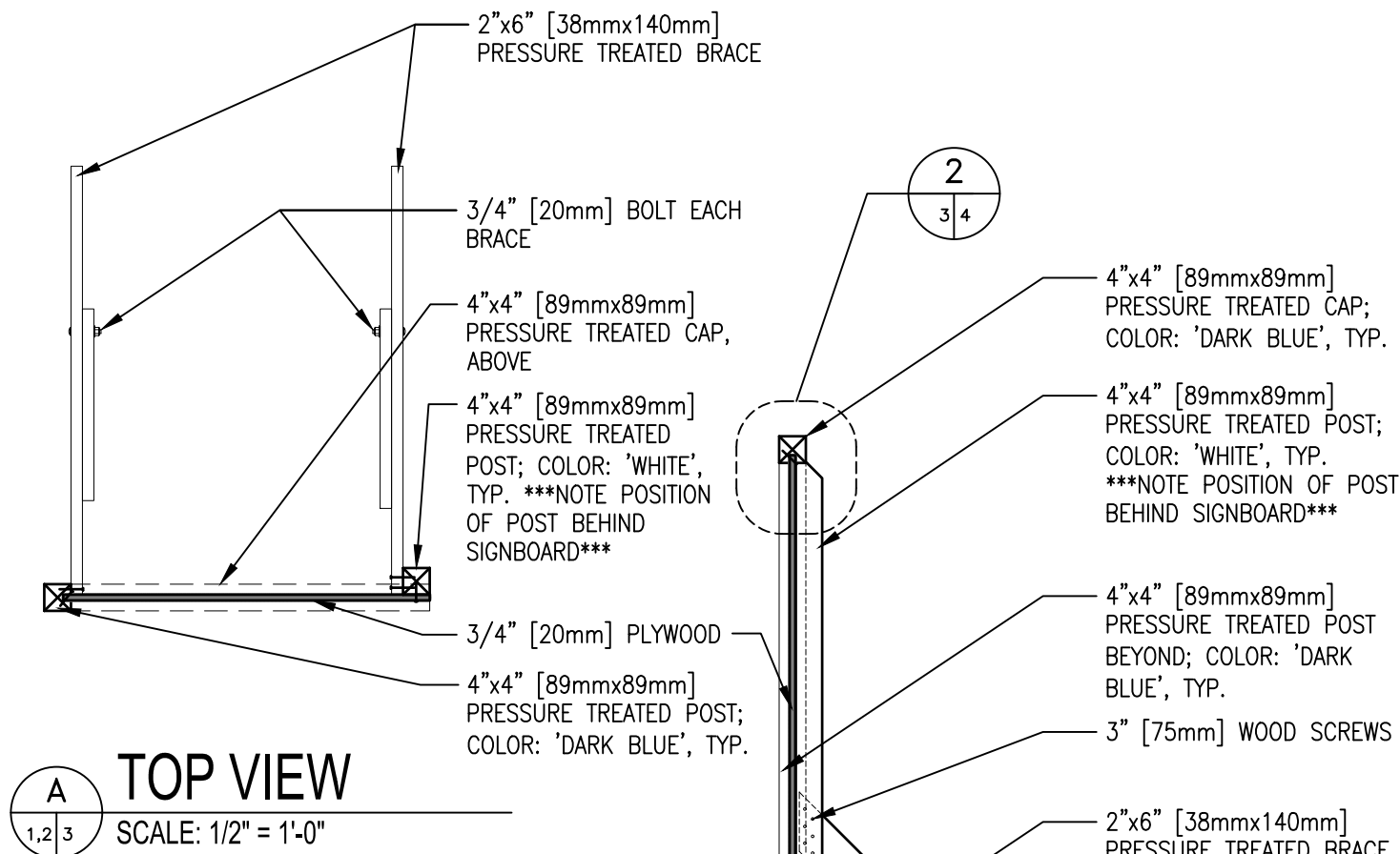
PLATE 2USAF



NAVAL FACILITIES ENGINEERING SYSTEMS COMMAND PROJECT IDENTIFICATION SIGNBOARD

SCALE: 3/4" = 1'-0"

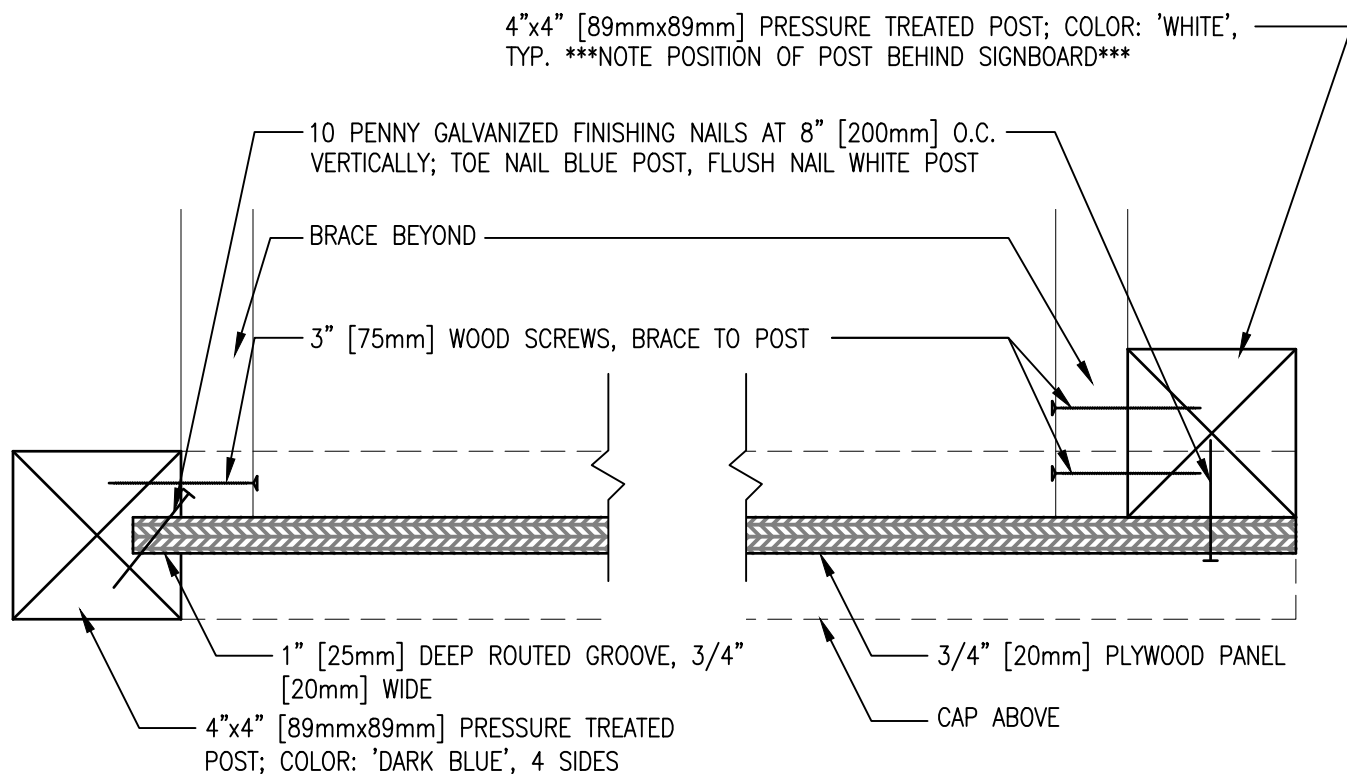
PLATE 2USARMY



NOTES:

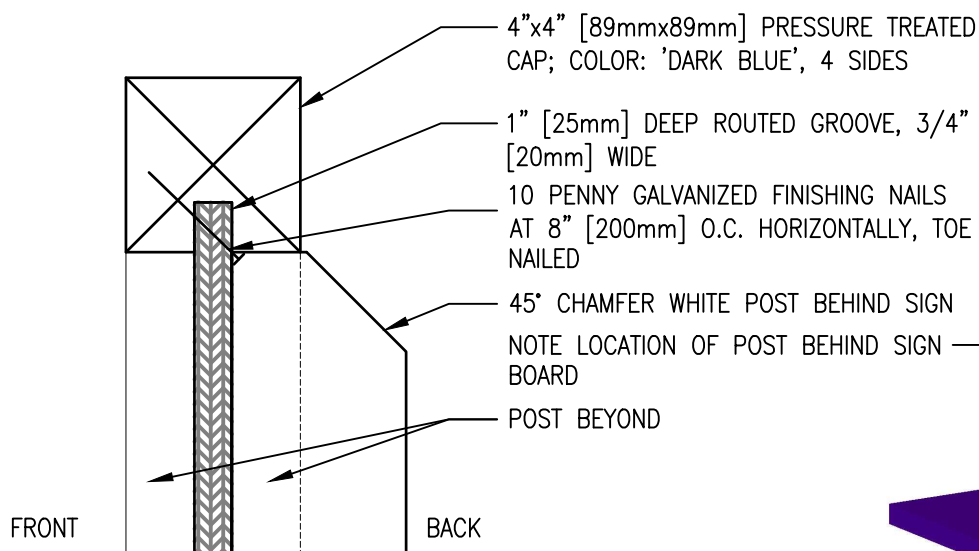
1. POSTS AND BRACES SHALL BE PRESSURE TREATED.
2. ALL FASTENERS SHALL BE ZINC COATED.
3. BRACING IS REQUIRED IN ALL SOIL CONDITIONS AND HIGH WIND ENVIRONMENTS.

NAVAL FACILITIES ENGINEERING SYSTEMS COMMAND
PROJECT IDENTIFICATION SIGNBOARD
SUPPORT DETAILS



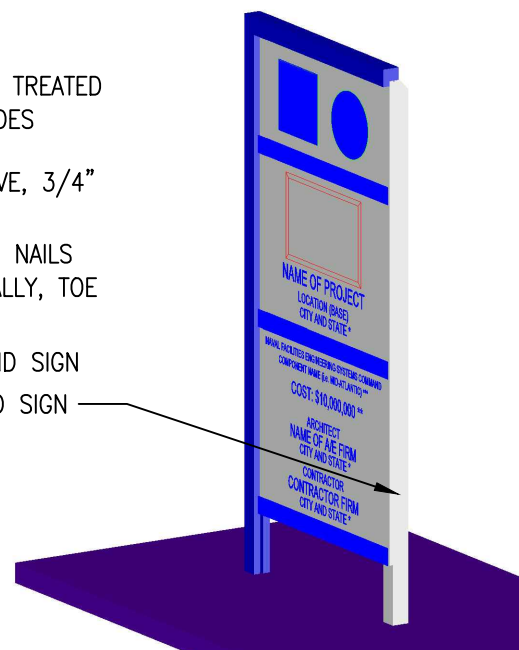
1 PLAN SECTION

SCALE: 3" = 1'-0"



2 SECTION AT TOP

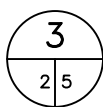
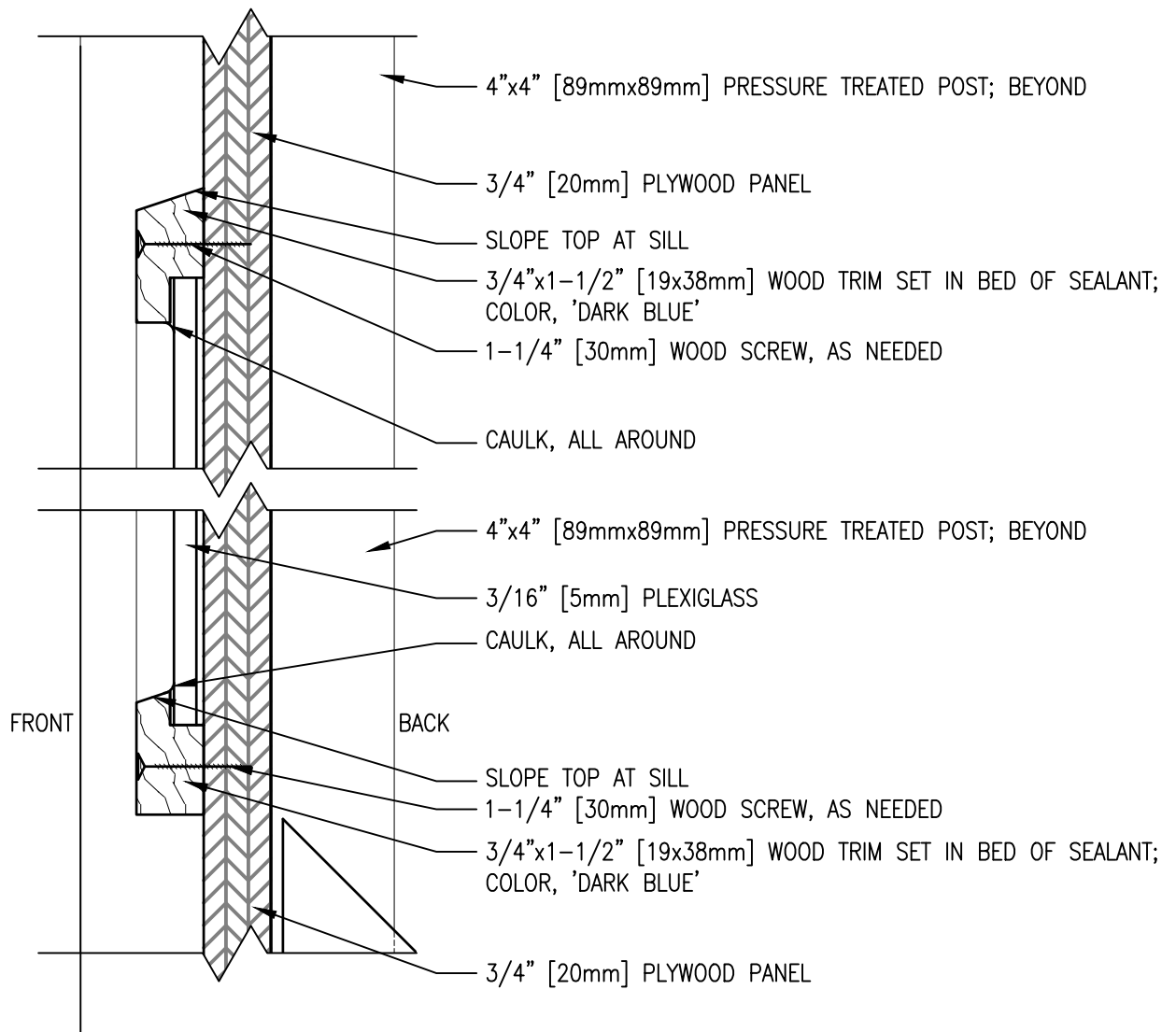
SCALE: 3" = 1'-0"



3 ISO VIEW

SCALE: NONE

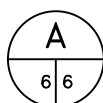
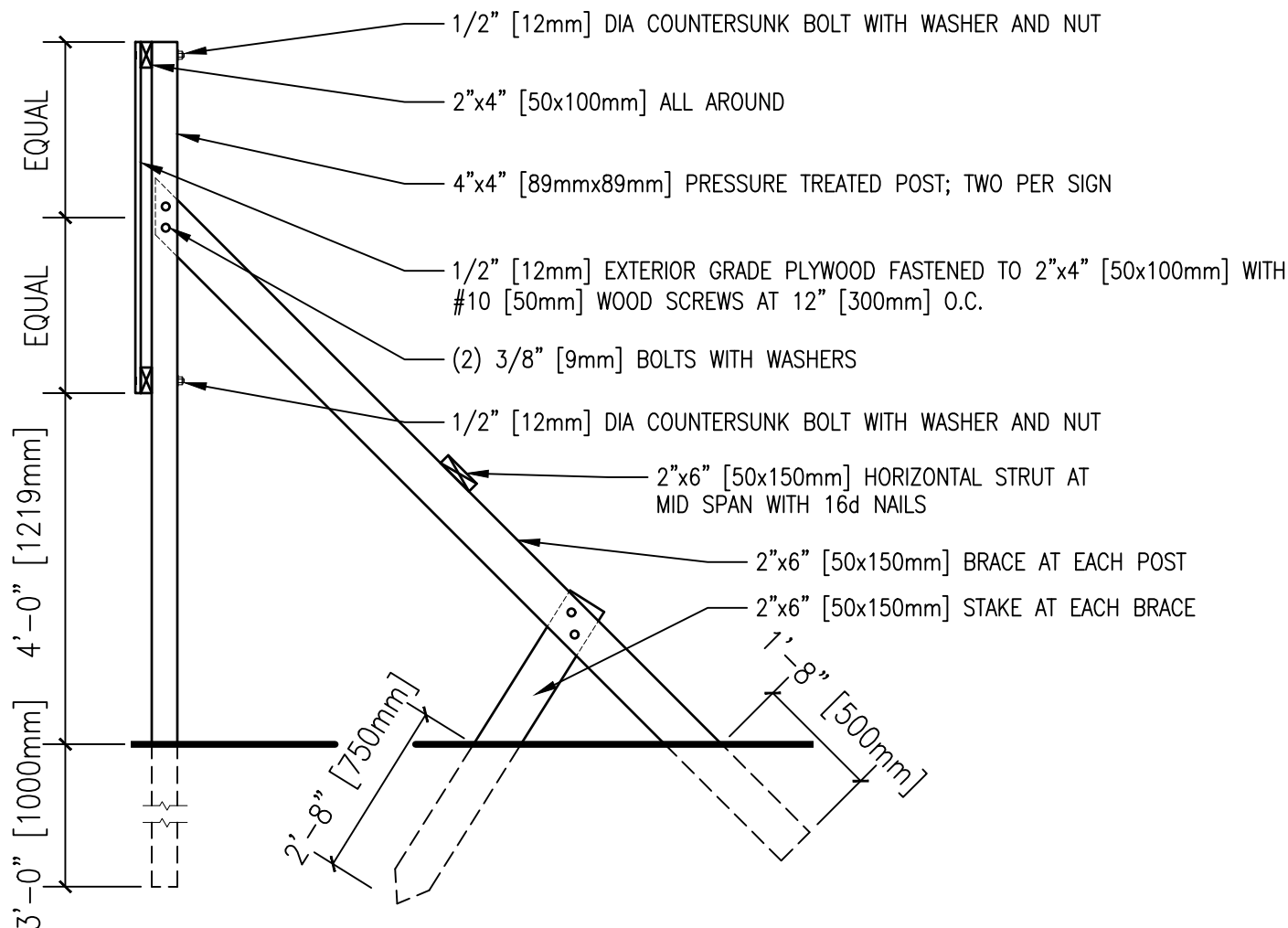
NAVAL FACILITIES ENGINEERING SYSTEMS COMMAND
PROJECT IDENTIFICATION SIGNBOARD SECTIONS



SECTION AT RENDERING FRAME

SCALE: 6" = 1'-0"

NAVAL FACILITIES ENGINEERING SYSTEMS COMMAND
PROJECT IDENTIFICATION SIGNBOARD SECTION



SECTION

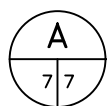
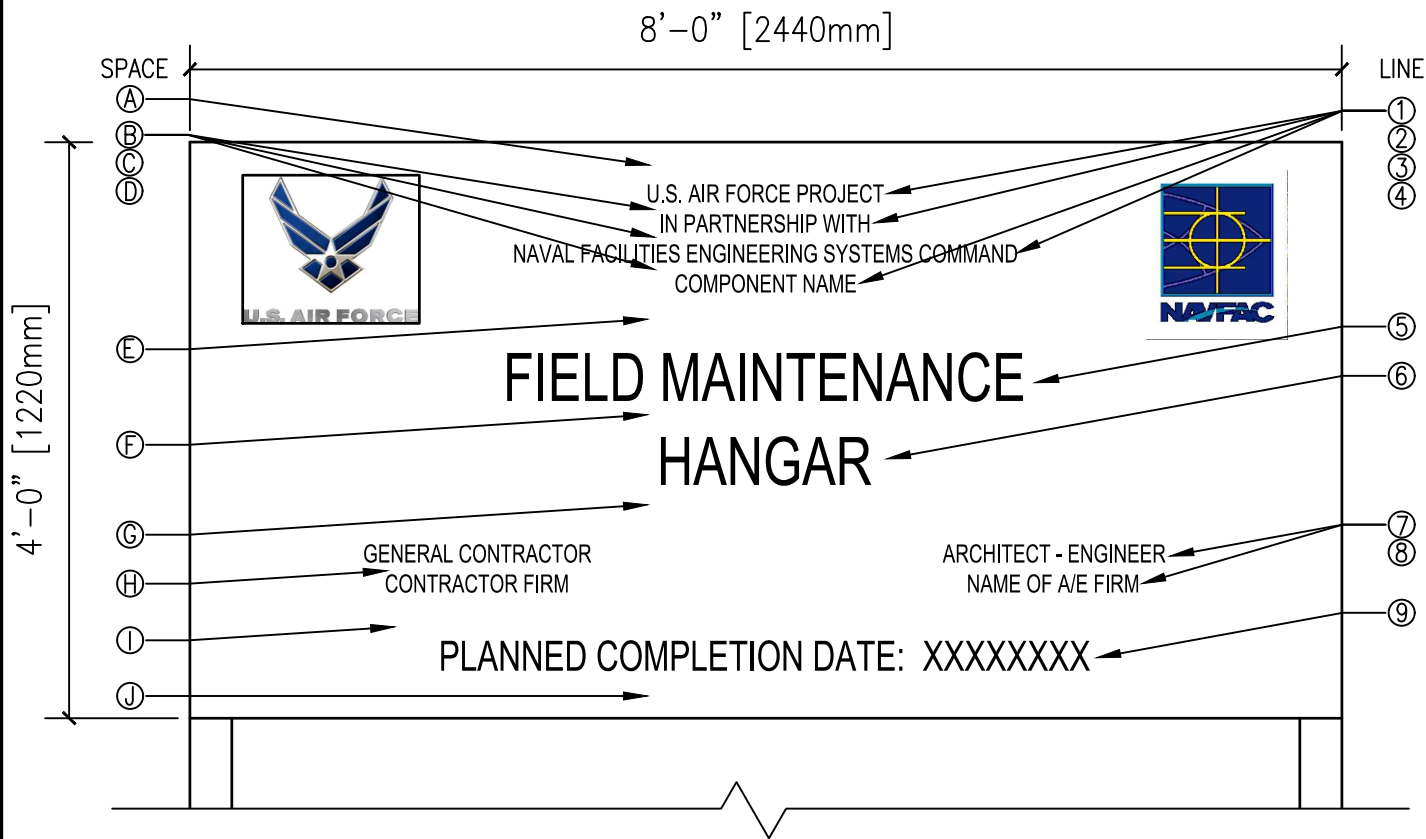
SCALE: 1/2" = 1'-0"

NOTES:

1. THE SIGN MUST BE CONSTRUCTED OF 4'x8' [1200mmx2400mm] 1/2" [12mm] GRADE A-C, EXTERIOR TYPE PLYWOOD MOUNTED ON A FRAME OF TREATED LUMBER.
2. THE HOST MAJCOM WILL PROVIDE SIGN COLORS AND DETAILS TO THE DESIGN MANAGER IN THE REQUIREMENTS AND MANAGEMENT PLAN (RAMP).
3. ALL LETTERING SHALL BE UPPERCASE HELVETICA MEDIUM.
4. PRESERVATIVE TREAT ALL WOOD SURFACES BURIED OR IN CONTACT WITH THE EARTH.
5. ALL FASTENERS SHALL BE GALVANIZED COATED.
6. LUMBER SHALL BE NON STRESS GRADE: $F_t = 8.5^5 \text{ KGS/M}^2 \text{ (1200PSI)}$
 $F_t = 10.5^5 \text{ KGS/M}^2 \text{ (1500PSI)}$

7. THE ENTIRE SIGNBOARD AND SUPPORTS SHALL BE GIVEN ONE COAT OF EXTERIOR ALKYD PRIMER AND TWO COATS OF EXTERIOR ALKYD ENAMEL PAINT. THE LETTERING AND SIGN WORK SHALL BE PERFORMED BY A SKILLED SIGN PAINTER USING PAINT KNOWN IN THE TRADE AS BULLETIN COLORS. WHERE PRESERVATIVE-TREATED LUMBER IS REQUIRED, UTILIZE ONLY CURED PRESSURE-TREATED WOOD WHICH HAS HAD THE CHEMICALS LEACHED FROM THE SURFACE OF THE WOOD PRIOR TO PAINTING.

NAVAL FACILITIES ENGINEERING SYSTEMS COMMAND
PROJECT IDENTIFICATION SIGNBOARD SECTION
U.S. AIR FORCE PROJECTS



SIGNBOARD

SCALE: 3/4" = 1'-0"

SPACE	HEIGHT	LINE	DESCRIPTION	LETTER HEIGHT	STROKE
A	3.5"	①	U.S. AIR FORCE PROJECT	1.5"	3/16"
B	1"	②	IN PARTNERSHIP WITH	1.5"	3/16"
C	1"	③	NAVAL FACILITIES ENGINEERING COMMAND	1.5"	3/16"
D	1"	④	COMPONENT NAME	1.5"	3/16"
E	5"	⑤	PROJECT NAME	4"	1/2"
F	3"	⑥	PROJECT NAME CONT'D (IF REQUIRED)	4"	1/2"
G	5"	⑦	GENERAL CONTRACTOR/ A-E	1.5"	3/16"
H	1"	⑧	GENERAL CONTRACTOR/ A-E	1.5"	3/16"
I	4"	⑨	PLANNED COMPLETION DATE:	2.5"	1/4"
J	4"				

NOTES:

1. ALL LETTERING SHALL BE UPPERCASE HELVETICA MEDIUM.

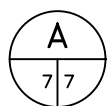
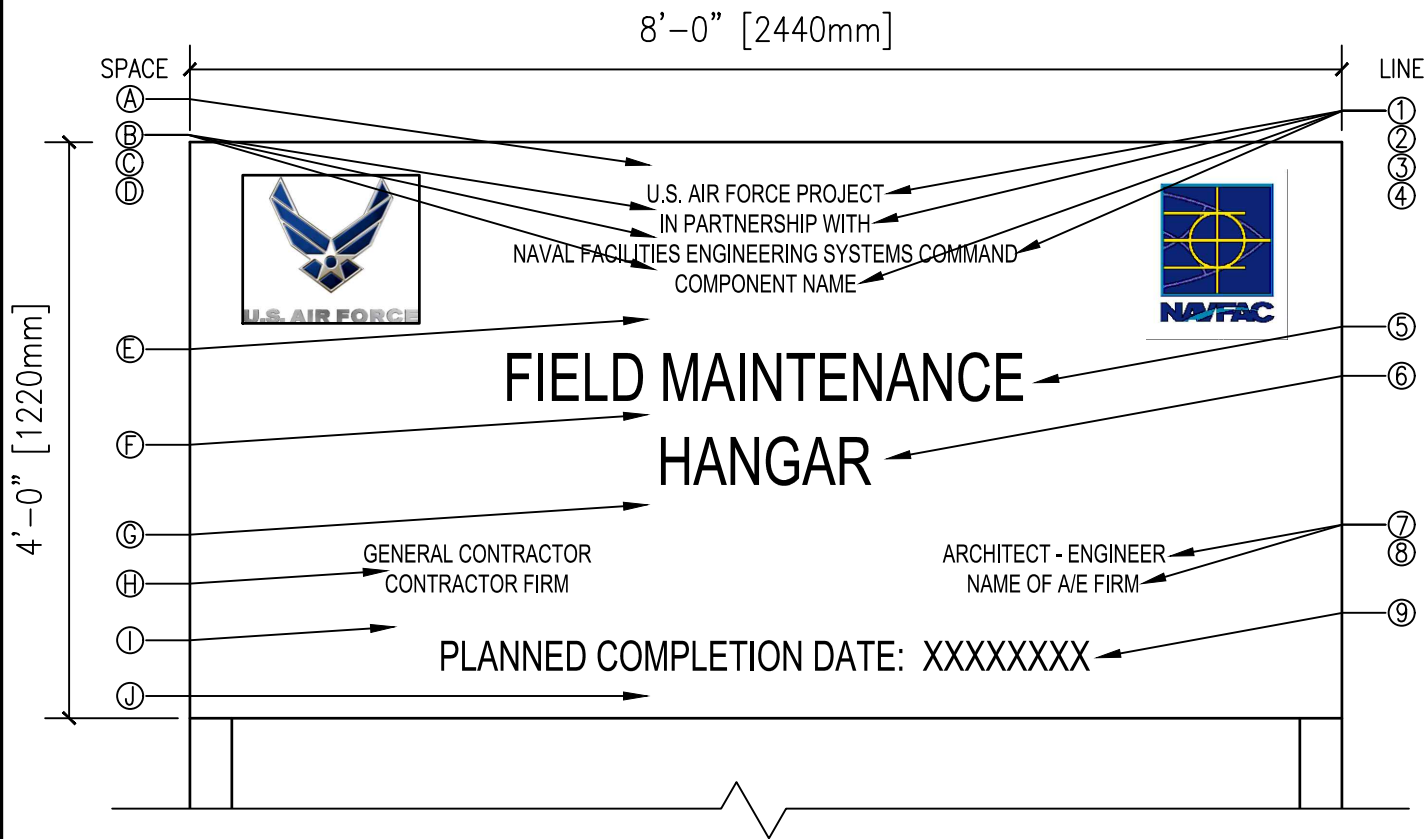
2. NAVFAC LOGO AVAILABLE AT:

<http://www.wbdg.org/ffc/dod/unified-facilities-guide-specifications-ufgs/forms-graphics-tables>

3. AIR FORCE LOGO AVAILABLE AT:

<http://www.wbdg.org/ffc/dod/unified-facilities-guide-specifications-ufgs/forms-graphics-tables>

NAVAL FACILITIES ENGINEERING SYSTEMS COMMAND
PROJECT IDENTIFICATION SIGNBOARD
U.S. AIR FORCE PROJECTS



SIGNBOARD

SCALE: 3/4" = 1'-0"

SPACE	HEIGHT	LINE	DESCRIPTION	LETTER HEIGHT	STROKE
A	3.5"	①	U.S. AIR FORCE PROJECT	1.5"	3/16"
B	1"	②	IN PARTNERSHIP WITH	1.5"	3/16"
C	1"	③	NAVAL FACILITIES ENGINEERING COMMAND	1.5"	3/16"
D	1"	④	COMPONENT NAME	1.5"	3/16"
E	5"	⑤	PROJECT NAME	4"	1/2"
F	3"	⑥	PROJECT NAME CONT'D (IF REQUIRED)	4"	1/2"
G	5"	⑦	GENERAL CONTRACTOR/ A-E	1.5"	3/16"
H	1"	⑧	GENERAL CONTRACTOR/ A-E	1.5"	3/16"
I	4"	⑨	PLANNED COMPLETION DATE:	2.5"	1/4"
J	4"				

NOTES:

1. ALL LETTERING SHALL BE UPPERCASE HELVETICA MEDIUM.

2. NAVFAC LOGO AVAILABLE AT:

<http://www.wbdg.org/ffc/dod/unified-facilities-guide-specifications-ufgs/forms-graphics-tables>

3. AIR FORCE LOGO AVAILABLE AT:

<http://www.wbdg.org/ffc/dod/unified-facilities-guide-specifications-ufgs/forms-graphics-tables>

NAVAL FACILITIES ENGINEERING SYSTEMS COMMAND
PROJECT IDENTIFICATION SIGNBOARD
U.S. AIR FORCE PROJECTS