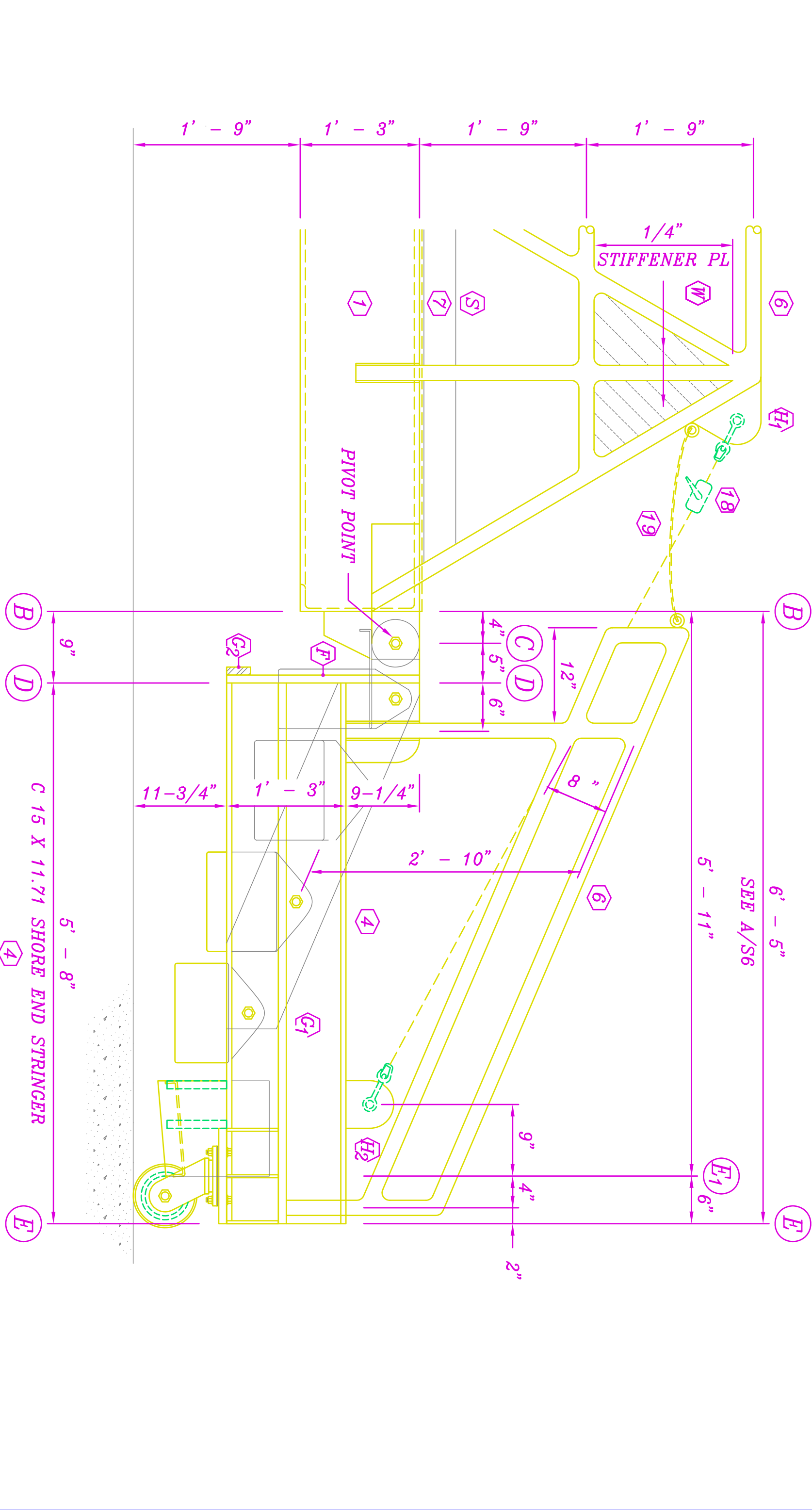
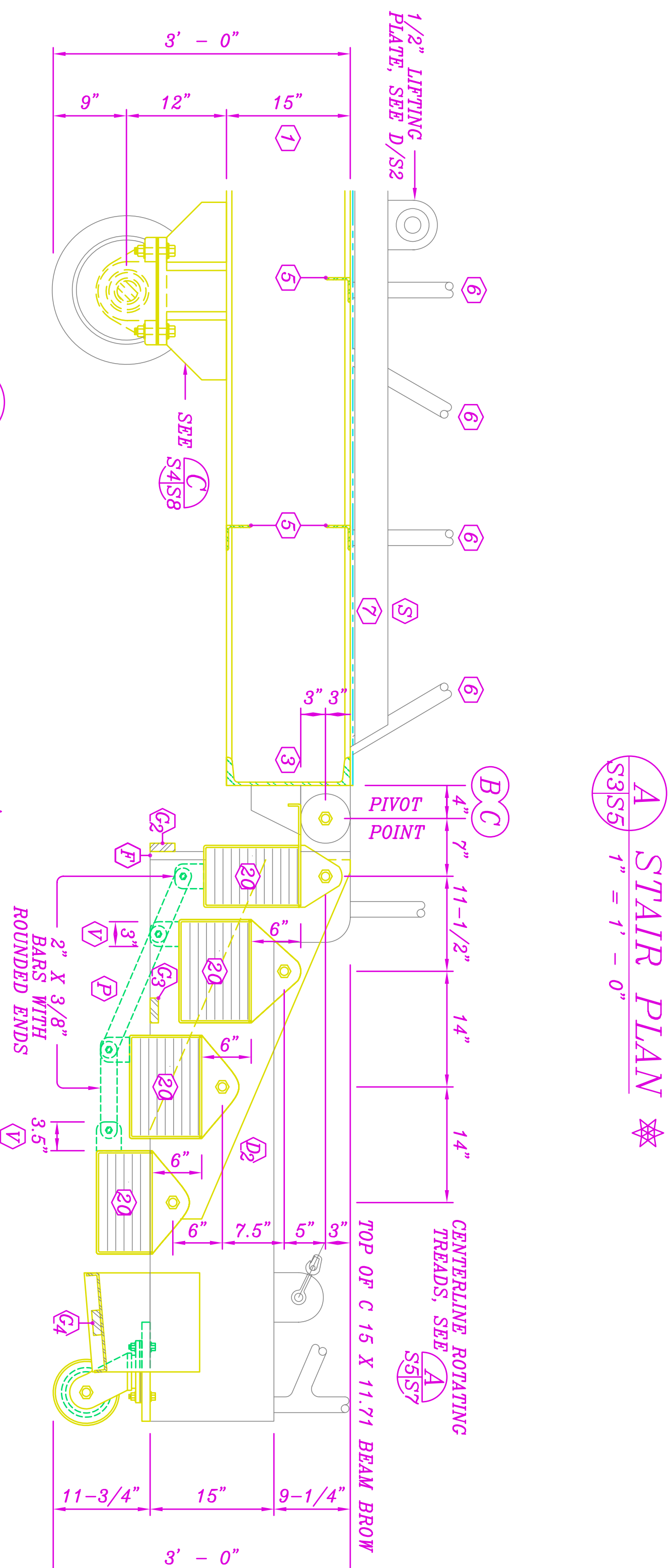
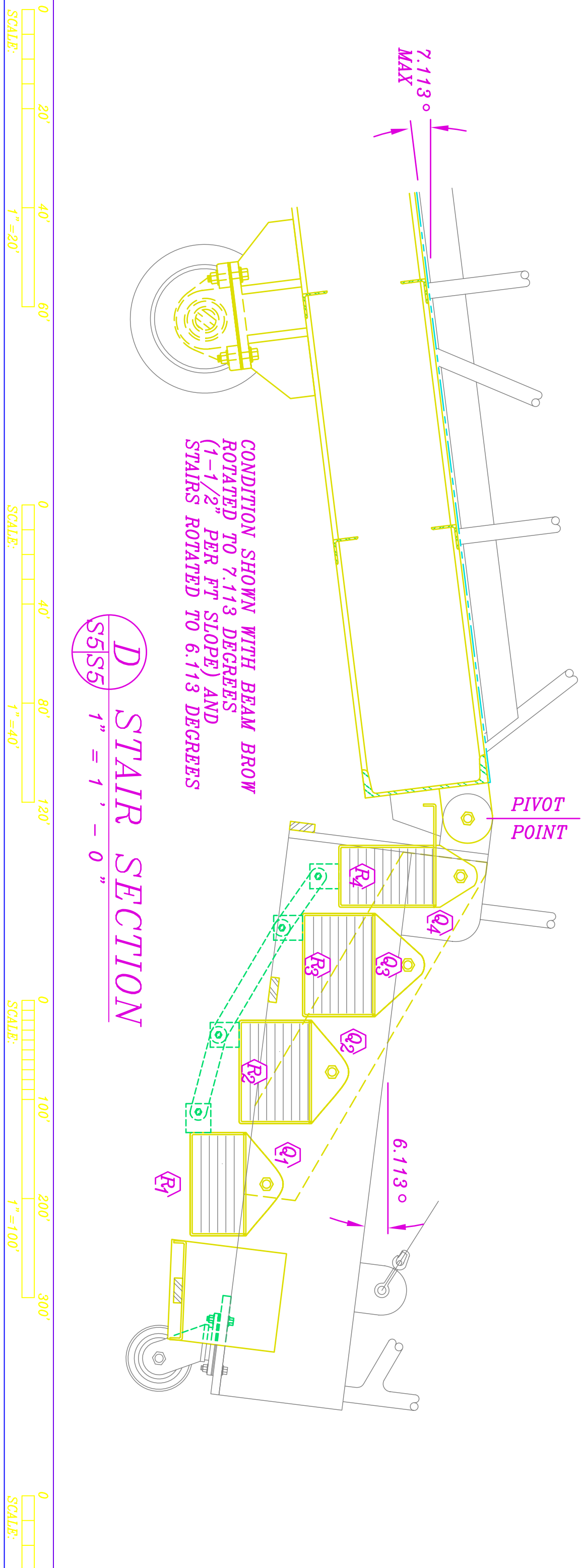


- LEGEND: ALUMINUM UNLESS NOTED BY *
- MAJOR REVISION FROM PREVIOUS DRAWINGS
 - C 15 X 11.71 X 40'-0" EXTERIOR BEAM
 - C 15 X 11.71 X 23'-0" INTERIOR BEAM
 - C 15 X 11.71 X 3'-0" END BEAM
 - C 15 X 11.71 X 5'-8" SHORE END STRINGER
 - L 3 X 3 X 1/4
 - 1-1/2" DIA PIPE POST / HANDRAIL, SEE B/S2
 - 2' 11-1/2" X 1/4" CHECKERED FLOOR PLATE
 - 1/4" CHECKERED SHORE END FIXED TREAD, SEE B/S7
 - 8" DIA X 6" SHORE END POLYURETHANE SWIVEL CASTER, SEE A/S2
 - 3 TON HAND-OPERATED HOIST WITH CHAINS, HOOKS AND SHACKLES EACH SIDE (2 PER BROW), SEE C/S5
 - 3/16" YELLOW VINYL COATED CHAIN WITH SNAP HOOK AND 1" I.D. RING WELDED TO FIBES EACH END
 - 1" LEAD PLATE, SEE F/S2
 - 10" X 1" STRINGER TREAD PLATE SEE C/S7
 - 3-3/8" X 1" X 24-1/4" STRINGER END WEB STIFFENER, SEE C/S7
 - 3" X 1" X 5-8" STRINGER WEB HORIZONTAL STIFFENER, SEE A/S6
 - 3" X 1" X 3'-8" STRINGER BRACE, SEE A/S6
 - 3" X 1" X 3' 2-1/2" STRINGER BRACE, SEE A/S7
 - 3" X 1" X 3'-1/2" SHORE END TREAD STIFFENER, SEE B/S7
 - 9" X 1" PAD-EYE WITH 1-1/2" DIA HOLE, SEE E/S2
 - 6" X 1" PAD-EYE WITH 1-1/2" DIA HOLE, SEE E/S2
 - 2" X 3/8" ROTATING TREAD BRACE PLATE, SEE B/S5
 - 3/8" ROTATING TREAD END PLATE, SEE F/S2
 - 1/4" ROTATING BENT TREAD PLATE, SEE F/S2
 - 4" X 1/4" TOEBOARD, SEE C/S2
 - 3-1/2" X 1/4" X 3" ROTATING TREAD PLATE, SEE A/S7
 - 1/4" HANDRAIL STIFFENER PLATE, SEE C/S5



B STAIR SECTION
1" = 1' - 0"

C STAIR ELEVATION
1" = 1' - 0"



D STAIR SECTION
1" = 1' - 0"

- DO NOT WELD ABUTTING PLATES THAT ROTATE ABOUT PIVOT POINT
- VERIFY COUNTERBALANCE OF BROW PRIOR TO WELDING TOP TREAD PLATES
- STEEL AND ALUMINUM INTERFACES SHALL BE INSULATED WITH TEPION PLATES, WASHERS OR SLEEVES TO PREVENT GALVANIC CORROSION, SEE B/S1
- PROVIDE TEPION OR RUBBER SHEETS BETWEEN LEAD PLATES AND ALUMINUM (TRIM LEAD PLATES AS REQUIRED TO FIT)

IF SHEET IS LESS THAN 22" X 34", IT IS A REDUCED PRINT. SCALE REDUCED ACCORDINGLY.	
STRUCTURAL	SHT 5 OF 8
DES	R. CHONG
DR	R. CHONG
CHK	SUEHRO
DPPE	ORLOWSKI
INTV BR MGR	
DIV DIR	
SUBASE	
SIERRA WHARVES	
PEARL HARBOR, HI	
40' X 3' BEAM BROW	
STAIR PLAN, SECTION AND ELEVATION	
APPROVED	DATE
D	11/15/02
80091	7498191
CONSTR CONTR NO	PWC SHOP
SPEC	PWC SHOP
SHR	5 OF 8