

CHAPTER 312: ORTHOPEDICS, PODIATRY, CHIROPRACTIC AND SPORTS MEDICINE CLINIC

1	Purpose and Scope	312-2
2	Definitions	312-2
3	Operating Rationale and Basis of Criteria	312-7
4	Program Data Required (Input Data Questions): Orthopedics, Podiatry and Chiropractic Clinics	312-11
5	Space Planning Criteria: Orthopedics, Podiatry and Chiropractic Clinics	312-12
6	Program Data Required (Input Data Questions): Sports Medicine Clinic	312-19
7	Space Planning Criteria: Sports Medicine Clinic	312-20
8	Planning and Design Considerations	312-26
9	Functional Relationships	312-29
10	Functional Diagram: Orthopedics, Podiatry and Chiropractic Clinics	312-31
11	Functional Diagram: Sports Medicine Clinic	312-32
12	Appendix A: Space Planning Criteria Summary	312-33

1 PURPOSE AND SCOPE

This chapter outlines space planning criteria for services and programs provided in the outpatient Orthopedics, Podiatry, Chiropractic and Sports Medicine Clinic within the Military Health System (MHS). Outpatient clinics include both freestanding community-based facilities, as well as ambulatory clinics in or directly adjacent to hospital-based services.

Orthopedic and podiatry services are assumed to be combined into one department. It is assumed in this chapter that any orthopedic procedures requiring general anesthesia services will be consolidated in the Operating Rooms (ORs) of a Hospital.

Some facilities with an Orthopedics, Podiatry Clinic may not have an in-house Orthotics Laboratory. For those that do, this chapter provides a functional area with space criteria for the Orthotics Laboratory (i.e., Brace Shop).

Physical Medicine and Rehabilitation (PM&R) is a service that provides support to patients with musculoskeletal and neurological disorders. Physiatrists can offer electrodiagnostic studies; comprehensive treatment plans that involve physical and occupational therapy, medications, and injections; and they can prescribe and evaluate patients for medical equipment, orthotics, and braces. Thus, this chapter provides a functional area with space criteria for PM&R that will provide support to this clinic.

There is one functional area within this chapter that can be utilized by the planner to create the Chiropractic Clinic. Of those Military Treatment Facilities authorized to provide chiropractic care, it is understood that Chiropractic Services may be provided in conjunction with Physical Therapy, Occupational Therapy, Rehabilitation and/or Orthopedics. It is important for the planner to collaborate with these services to determine the location and needs of Chiropractic Services.

U.S. military physicians are increasingly turning to sports medicine to treat the injuries soldiers sustain on the battlefield and in basic training. Every Military Treatment Facility will practice Sports Medicine differently. It may be a standalone center or clinic, or it can consist of a few rooms that are part of the Physical Therapy or Orthopedics Clinic. The functional areas and spaces provided within this chapter that pertain to the Sports Medicine Clinic are comprehensive. Not all spaces will be required; therefore, careful planning and coordination must take place.

This space planning criteria applies to all Military Medical Treatment Facilities (MTFs). Policies and directives, DoD's Subject Matter Experts (SMEs), established and/or anticipated best practice guidelines / standards, and TRICARE Management Activity (TMA) provides the foundation for the workload based space criteria and Net Square Footages (NSF) for each space. The latest version of DoD's UFC-4-510-01, Appendix B cites all Room Codes identified in this chapter.

2 DEFINITIONS

- A. Automated External Defibrillator (AED): An AED or automated external defibrillator is a computerized medical device which can check a person's heart rhythm. It can recognize a rhythm that requires a shock, and it can advise the rescuer when a shock is needed. AEDs are typically placed in targeted public areas such as outpatient clinics, doctor's offices, office complexes, sports arenas, gated communities, shopping malls, and many others. They are wall-mounted, highly visible, and

accessible to everyone. The Americans with Disabilities Act requires that objects not protrude more than 4 inches into foot traffic areas of open aisles and walkways (hallways) unless the object's bottom edge is no higher than 27 inches from the ground.

- B. Aquatic Therapy: Aquatic Therapy or Pool Therapy is physical therapy that is performed in the water. Aquatic therapy uses the resistance of water instead of weights. It aims to rehabilitate patients after injury or those with chronic illness, avoiding the amount of weight placed on the joints by exercise outside the water
- C. Average Length of Encounter (ALOE): In these space criteria, an encounter is defined as a face-to-face professional contact between a patient and a provider vested with responsibility for diagnosing, evaluating, and treating the patient's condition. The Length of Encounter is the time between set-up and clean-up of the Exam Room. The Average Length of Encounter is used to capture variations in Length of Encounter among similar clinical encounters that will take place in an Exam Room.
- D. Bariatrics: Bariatrics is the branch of medicine that deals with the causes, prevention, and treatment of obesity. A bariatric patient is one that is severely obese, overweight by 100 to 200 lbs, or having a body weight of greater than 300 lbs. A Body Mass Index (BMI) of greater than 40 is considered bariatric. FGI Guidelines for Healthcare Facilities provides guidelines for the design of bariatric care units.
- E. Bariatric Patient Exam Room: This room is sized and equipped to accommodate the bariatric patient and their family member(s). It is sized for easier access. Minimum door width should be 4 feet to accommodate bariatric wheelchairs, and a minimum of a 6 feet turning radius should be provided. When provided, these rooms should be located towards the front (entrance) of the clinical suite.
- F. Bariatric Patient Toilet: This space is the bathroom for the bariatric patient. Preferred bariatric design solutions for this space include oversized toilet seats and floor-mounted toilets with weight capacity of at least 1,000-lbs. Toilet seat height of 17 to 19 inches and reinforced grab bars that hold at least 750-lbs is preferred to aid the patient to rise. Toilet centered 24 inches from a wall allows space for caregivers on each side to assist. Space to provide a minimum turning radius of 6 feet in order to accommodate larger wheelchairs is preferred. Sink placement, further away from the toilet, is recommended to prevent patients using it for lift support.
- G. C-Arm: "C-Arm" is a name given to specialized x-ray imaging machines, due to their special arced semi-circular design. They provide real-time detailed viewing of anatomic structures using fluoroscopic dyes. They can be small and portable.
- H. Chiropractor: A licensed primary health-care provider that may diagnose all conditions of the human body by physical examination, x-ray, MRI, blood tests or any other diagnostic testing as taught in chiropractic colleges and universities. They may treat by manipulation, diet, exercise, rehabilitation, nutrition, acupuncture and physical modalities such as traction, electrical stimulation, ultrasound, soft tissue techniques and laser. They may work as part of a team with the patient's family physician, surgeon or other healthcare specialist to best resolve the patient's problem.
- I. Clean Utility Room: This room is used for the storage and holding of clean and sterile supplies. Additionally, it may provide space to prepare patient care items. Clean linen may be stored in a designated area in the clean utility room if space is not provided in a separate room or in an alcove.

- J. Consult Room: This is a consultation room for family members to meet with physicians or other providers privately and is ideally located near the waiting room.
- K. Electromyography (EMG): An electromyogram (EMG) measures the electrical activity of muscles at rest and during contraction. EMG is used as a diagnostics tool for identifying neuromuscular diseases, assessing low-back pain, kinesiology, and disorders of motor control. EMG signals are also used as a control signal for prosthetic devices such as prosthetic hands, arms, and lower limbs.
- L. Full-Time Equivalent (FTE): A staffing parameter equal to the amount of time assigned to one full-time employee. It may be composed of several part-time employees whose total time commitment equals that of a full-time employee. One FTE equals a 40-hour a week workload.
- M. Functional Area: The grouping of rooms and spaces based on their function within a clinical service. Typical Functional Areas are Reception Area, Patient Area, Support Area, Staff and Administrative Area, and Education Area.
- N. Gait Lab: A Gait Lab offers gait analysis testing. This test analyzes how a patient walks and identifies any abnormal walking patterns. The test has several components. All of this information provides a comprehensive picture of the various factors contributing to the gait disorder. State-of-the-art instruments such as advanced video recording techniques and 3-D motion capture technology may be used to analyze a patient's body movement and muscle activity while walking.
- O. Graduate Medical Education (GME): After a physician completes 4 years of medical school, they must then complete an internship (also called PGY1 or Post Graduate Year 1) and then a residency (also termed GME or Graduate Medical Education). An internship typically lasts one year, and a residency can last from three to seven years depending on the specialty that is chosen.
- P. Infection Control Risk Assessment (ICRA): An ICRA is a multidisciplinary, organizational, documented process that considers the medical facility's patient population and mission to reduce the risk of infection based on knowledge about infection, infectious agents, and the care environment, permitting the facility to anticipate potential impact.
- Q. Input Data Statement: A set of questions designed to elicit information about the healthcare project in order to create a Program for Design (PFD) based on the criteria parameters set forth in this chapter. Input Data Statements could be mission related, based on the project's Concept of Operations; and they could be workload or staffing related, based on projections for the facility.
- R. Negative Pressure Isolation Room: A type of Airborne Infection Isolation Room that is provided for the isolation of patients with airborne contagious diseases such as tuberculosis and is designed to direct air flow from outside corridors and rooms into the patient room, preventing the chance for contaminated air to flow to other parts of a building. An anteroom is not required in an outpatient setting.
- S. Net-to-Department Gross Factor (NTDG): This number, when multiplied by the programmed net square foot (NSF) area, determines the departmental gross square feet (DGSF).
- T. Office:
 - a. Private Office: Generally speaking, a private office is needed for the supervisory and/or managerial role. It may be justified for a provider or a non-provider,

depending upon the nature of their work. Private offices are needed where confidential communication in person or on the telephone takes place. When private offices are justified, they are typically 120 NSF.

- b. Shared Office: Staff may be assigned to share an office space of 120 NSF, which amounts up to 60 NSF per person. This can be a good solution for staff for whom a quiet office environment is important for conducting confidential communication in person or on the telephone.
- c. Cubicle: A cubicle is provided in an open room. Managers and other staff with no direct reports as well as part-time, seasonal and job-sharing staff may qualify for a cubicle environment. Cubicle environments can have the benefit of being more open, airy and light, and can make more efficient use of space. Such environments are particularly conducive to team-oriented office groupings. Cubicle environments work best when they contain adequate numbers of conference and small group meeting spaces, for confidential conversations and/or group tasks. A 60 square foot cubicle is the preferred size.
- U. Orthopedics: The branch of surgery that is broadly concerned with the skeletal system. Orthopedic specialists care for a variety of diseases and injuries to bones, muscles, tendons, ligaments, and related tissues, using the latest surgical, arthroscopic, and radiology techniques to get people moving again by repairing, reconstructing, and relieving pain.
- V. Orthotics: An orthotic is a foot-supporting device also known as a custom insole. Foot Orthotics support, correct and accommodate the bones, tendons, ligaments, and plantar fascia band in each foot.
- W. Orthotics Lab: Where the fabrication of custom foot orthotics, shoe modifications and professionally fit shoes for optimal fit, function and performance takes place.
- X. Outpatient Clinic: A clinic providing outpatient services in both freestanding community-based facilities, as well as ambulatory clinics in or directly adjacent to hospital-based services.
- Y. Performance Diagnostics: Performance diagnostics combined with an extensive sports medical examination is a key component of many sports disciplines. The goal is the exact specification of the individual's physical capacity. This helps athletes reach their personal performance peak and allows amateur athletes and sports beginners exercise at their appropriate level and adequate speed without having to fear implications from unnecessary overstraining.
- Z. Personal Property Lockers: This is a small-sized locker, commonly called purse or cell phone locker, and is generally used to secure purses and smaller valuables. Staff members who do not have an office or cubicle space where they can safely store belongings will be assigned these lockers.
- AA. Physical Medicine and Rehabilitation (PM&R): PM&R, also called physiatry, is the branch of medicine emphasizing the prevention, diagnosis, and treatment of disorders – particularly related to the nerves, muscles, and bones – that may produce temporary or permanent impairment. Rehabilitation physicians have completed training in PM&R and are sometimes referred to as PM&R physicians or physiatrists.
- BB. Picture Archiving and Communication System (PACS) Viewing Room: A digital radiology reading room that consists of workstations for interpretation.

- CC. Podiatry: Branch of medicine devoted to the study of, diagnosis and medical treatment of disorders of the foot, ankle, and lower extremity.
- DD. Program for Design (PFD): A listing of all of the spaces and rooms included within a service and the corresponding net square foot area of each space and room. This listing of spaces and rooms is based on criteria set forth in this chapter and specific information about mission, workload projections and staffing levels authorized.
- EE. Provider: A medical professional, such as a physician, nurse practitioner, or physician assistant, who examines, diagnoses, treats, prescribes medications, and manages the care of patients within the scope of their practice as established by the governing body of a healthcare organization.
- FF. SEPS: Acronym for Space and Equipment Planning System, a digital tool developed by the Department of Defense (DoD) and the Department of Veterans Affairs to generate a Program for Design (PFD) and a Project Room Contents list (PRC) for a DoD healthcare project based on specific information entered in response to Input Data Statements.
- GG. Simulation Motion Lab: Also Sports Biomechanics Lab. This type of lab is designed to be able to simulate real-life sports environments such as a pitcher's mound, golfing tee box, batting cage or running track so that one can study the motion of the athlete's body and the forces acting at their joints.
- HH. Soiled Utility Room: This space provides an area for cleanup of medical equipment and instruments and for disposal of medical waste material. It provides temporary holding for material that will be picked up by Central Sterile or similar service. It should be accessible from the main corridor.
- II. Sports Medicine: Sports Medicine is the study and practice of medical principles related to the science of sports, particularly in the areas of Sports Injury Diagnosis and Treatment, Sports Injury Prevention, and Sports Training and Athletic Performance, including: Exercises and Workouts, Sports Nutrition and Sports Psychology. U.S. military physicians are increasingly turning to Sports Medicine to treat the injuries soldiers sustain on the battlefield and in basic training.
- JJ. Spinal Decompression: Spinal decompression is the release of pressure on the spinal cord or nerve roots. Non-surgical spinal decompression therapy is a noninvasive form of spine rehabilitation that is similar to traction therapy. This therapy, which requires daily treatment over the course of about a month, plus ongoing maintenance treatments in some cases, uses pressure and positioning to get the injured disc to slip back into its normal position. Therapy is performed on a special decompression table, and other chiropractic treatments, such as heat therapy and electric stimulation, are often simultaneously used.
- KK. Sub-Waiting, Pre-Procedure: This is space for patient waiting in a chair prior to proceeding to the Procedure Room. It is similar to pre-procedure holding.
- LL. Sub-Waiting, Post-Procedure: Depending on procedure performed, patient may need extra time to sit up in a chair post-procedure prior to going home. This space is allocated for that purpose.
- MM. Team Collaboration Room: This space provides staff with an environment conducive to collaboration. Room contains touchdown computer workstations for documentation and a table with chairs to hold meetings.

- NN. Telehealth: The use of technology, such as computers and mobile devices, to manage healthcare remotely. It includes a variety of health care services, including but not limited to online support groups, online health information and self-management tools, email and online communication with health care providers, remote monitoring of vital signs, video or online doctor visits. Depending on the concept of operations for this space, it may be equipped as an exam room or as a consult room with video / camera capability.
- OO. Workload: The anticipated number of encounters or procedures processed through a clinic. The projected Orthopedics, Podiatry, Chiropractic, and Sports Medicine Clinic workload for a given location determines the number of Exam and Treatment Rooms in the Program for Design.

3 OPERATING RATIONALE AND BASIS OF CRITERIA

- A. Workload projections and planned services / modalities for a specific MHS facility project shall be sought by the planner in order to develop a project based on these Criteria. Healthcare and clinical planners working on military hospitals, medical centers and clinics shall utilize and apply the workload based criteria set forth herein for identified services and modalities to determine space requirements for the project.
- B. Space planning criteria have been developed on the basis of an understanding of the activities involved in the functional areas required for Orthopedics, Podiatry, Chiropractic and Sports Medicine Clinic and its relationship with other services of a medical facility. These criteria are predicated on established and/or anticipated best practice standards, as adapted to provide environments supporting the highest quality health care for Service Members and their dependents.
- C. These criteria are subject to modification relative to equipment, medical practice, vendor requirements, and subsequent planning and design. The final selection of the size and type of medical equipment is determined during the design process.
- D. The area for each room (NSF) in this chapter has been provided by the Military Health System (MHS) Space Template Board.
- E. Calculation of the Exam, Procedure, Treatment and Testing Rooms in Functional Area 2: Orthopedics and Podiatry Clinic, Functional Area 4: Physical Medicine and Rehabilitation (PM&R) Clinic Patient Area, Functional Area 5: Chiropractic Clinic Patient Area, and Functional Area 10: Sports Medicine Clinic Patient Area is derived from workload projections via the workload Input Data Statements as outlined below. Most of the remaining rooms in these functional areas as well as the Clinic Support Areas are determined based on the number of Exam Rooms generated by workload. Mission, Staffing and Miscellaneous Input Data Questions drive the rest of the spaces in this chapter.
- F. Section 4: Input Data Questions and Section 5: Space Planning Criteria have been implemented and tested in SEPS II.
- G. Exam room capacity calculation is based on the following formula / parameters:

Formula:

$$\frac{\text{Operating Days per Year} \times \text{Hours of Operation per Day}}{\text{Average Length of Encounter (ALOE) in Minutes} / 60 \text{ Minutes}} \times \text{Utilization Factor}$$

User-defined Value:

1. Operating Days per Year: 232, 240 or 250. (default in SEPS: 240)
2. Hours of Operation per Day: 6, 7, or 8 (default in SEPS: 8)

Fixed Value:

1. Utilization Factor: 80%

Calculation: Annual Workload for one Exam Room:

$$\frac{240 \text{ Operating Days per Year} \times 8 \text{ Hours of Operation per Day}}{45 \text{ Minutes} / 60 \text{ Minutes}} \times 0.80 = 2,048$$

Minimum Annual Workload to generate an Exam Room: 20% of Annual Workload for one Exam Room.

H. Workload based room calculation examples:

1. Room Criteria Statement (Room 1):

Minimum one if the projected annual clinic encounters is between 307 and 1,536; provide an additional one for every increment of 1,536 projected annual clinic encounters greater than 1,536; the minimum workload to generate an additional room is 307.

a. Input Data Statement 1, Answer 1:

How many annual clinic encounters are projected? (W) = 4,700

Step 1: Subtract the increment from the projected annual encounters to account for the "Minimum one" condition.

$$4,700 - 1,536 = 3,164$$

One room generated

Step 2: Divide the resulting value by the increment.

$$3,164 / 1,536 = 2.05$$

Two additional rooms generated

Step 3: Multiply the whole value ("2" in the previous step) by the increment.

$$2 \times 1,536 = 3,072$$

Step 4: Subtract Step 3 from Step 1.

$$3,164 - 3,072 = 92$$

Step 5: Compare Step 4 with the "minimum workload to generate an additional room" value; if higher, provide an additional room.

92 is less than 307

No additional rooms generated.

Total number of rooms generated by 4,700 annual encounters: 3

b. Input Data Statement 1, Answer 2:

How many annual clinic encounters are projected? (W) = 15,000

Step 1: Subtract the increment from the projected annual encounters to account for the "Minimum one" condition.

$$15,000 - 1,536 = 13,464$$

One room generated

Step 2: Divide the resulting value by the increment.
 $13,464 / 1,536 = 8.76$

Eight additional rooms generated

Step 3: Multiply the whole value ("8" in the previous step) by the increment.
 $8 \times 1,536 = 12,288$

Step 4: Subtract Step 3 from Step 1.
 $13,464 - 12,288 = 1,176$

Step 5: Compare Step 4 with the "minimum workload to generate an additional room" value; if higher, provide an additional room.

1,176 is greater than 307

One additional room generated.

Total number of rooms generated by 15,000 annual encounters: 10

2. Room Criteria Statement (Room 2):

Minimum two if the projected annual encounters is between 614 and 6,144; provide an additional one for every increment of 3,072 projected annual encounters greater than 6,144; the minimum workload to generate an additional room is 614.

a. Input Data Statement 2, Answer 1:

How many annual clinic encounters are projected? (W) = 12,500

Step 1: Subtract the increment from the projected annual encounters to account for the "Minimum one" condition.

$12,500 - 6,144 (3,072 \times 2) = 6,356$

Two rooms generated

Step 2: Divide the resulting value by the increment.

$6,356 / 3,072 = 2.06$

Two additional rooms generated

Step 3: Multiply the whole value ("2" in the previous step) by the increment.

$2 \times 3,072 = 6,144$

Step 4: Subtract Step 3 from Step 1.

$6,356 - 6,144 = 212$

Step 5: Compare Step 4 with the "minimum workload to generate an additional room" value; if higher, provide an additional room.

212 is less than 614

No additional rooms generated.

Total number of rooms generated by 12,500 annual encounters: 4

b. Input Data Statement 2, Answer 2:

How many annual clinic encounters are projected? (W) = 18,000

Step 1: Subtract the increment from the projected annual encounters to account for the "Minimum one" condition.

$18,000 - 6,144 (3,072 \times 2) = 11,856$

Two rooms generated

Step 2: Divide the resulting value by the increment.

$11,856 / 3,072 = 3.85$
Three additional rooms generated

Step 3: Multiply the whole value (“3” in the previous step) by the increment.
 $3 \times 3,072 = 9,216$

Step 4: Subtract Step 3 from Step 1.
 $11,856 - 9,216 = 2,640$

Step 5: Compare Step 4 with the “*minimum workload to generate an additional room*” value; if higher, provide an additional room.
 2,640 is greater than 614
One additional room generated.

Total number of rooms generated by 18,000 annual encounters: 6

TABLE 1: WORKLOAD PARAMETER CALCULATION

312: ORTHOPEDICS, PODIATRY, CHIROPRACTIC AND SPORTS MEDICINE CLINIC				
CLINICAL ENCOUNTERS / PROCEDURES	AVERAGE LENGTH OF CLINIC ENCOUNTER (minutes)	UTILIZATION RATE	ANNUAL WORKLOAD PER EXAM / PROCEDURE ROOM (*)	MINIMUM ANNUAL WORKLOAD TO GENERATE ONE ROOM (20%)
Orthopedic Exam	45	80%	2,048	410
Podiatry Exam	30	80%	3,072	614
Orthopedic Hand Exam	20	80%	4,608	922
PM&R Exam	45	80%	2,048	410
Electromyography (EMG) Testing	90	80%	1,024	205
Chiropractic Treatment	30	80%	3,072	614
Sports Medicine Treatment	30	80%	3,072	614

(*) Values in this column are representative and are based on an 8-hour per day and a 240-day per year default value. SEPS calculates this value dynamically based on answers to the following Input Data Statements:

For Orthopedics, Podiatry, and Chiropractic Clinics:

- (1) Are Orthopedics, Podiatry and Chiropractic Clinics authorized to operate outside the standard 8-hour per day shift? (Misc); if not:
 - (2) Are Orthopedics, Podiatry and Chiropractic Clinics authorized to operate a 6-hour per day shift? (Misc) (If not, a 7-hour per day shift will be used to calculate workload driven spaces), and
- (3) Are Orthopedics, Podiatry and Chiropractic Clinics authorized to operate outside the standard 240 days per year? (Misc); if not:
 - (4) Are Orthopedics, Podiatry and Chiropractic Clinics authorized to operate 232 days per year? (Misc) (If not, 250 days per year will be used to calculate workload driven spaces)

For Sports Medicine Clinic:

- (5) Is Sports Medicine Clinic authorized to operate outside the standard 8-hour per day shift? (Misc); if not:
 - (6) Is Sports Medicine Clinic authorized to operate a 6-hour per day shift? (Misc) (If not, a 7-hour per day shift will be used to calculate workload driven spaces), and
- (7) Is Sports Medicine Clinic authorized to operate outside the standard 240 days per year? (Misc); if not:
 - (8) Is Sports Medicine Clinic authorized to operate 232 days per year? (Misc) (If not, 250 days per year will be used to calculate workload driven spaces)

4 PROGRAM DATA REQUIRED (Input Data Questions): ORTHOPEDICS, PODIATRY, AND CHIROPRACTIC CLINIC

A. Mission Input Data Statements

1. Is a Orthotics Lab is authorized? (M)
 - a. Is a Brace Shop, Lamination / Molding authorized? (Misc)
 - b. Is a Brace Shop, Sewing Room / Shoe Room authorized? (Misc)
 - c. Is a Brace Shop, Machine Room authorized? (Misc)
 - d. Is a Brace Shop, Fabrication Area authorized? (Misc)
2. Is a Rehabilitation Gymnasium authorized? (M)
3. Is a Gait Lab for Physical Medicine and Rehabilitation (PM&R) authorized? (M)
4. Is a Bariatric Exam Room authorized for the Orthopedics and Podiatry Patient Area? (M)
5. Is a Graduate Medical Education program for Orthopedics, Podiatry and Chiropractic Clinic authorized (M)
 - a. How many Orthopedics, Podiatry and Chiropractic Clinic resident / student FTE positions are authorized? (S)

B. Workload Input Data Statements

1. How many annual Orthopedic Exam encounters are projected? (W)
2. How many annual Podiatry Exam encounters are projected? (W)
3. How many annual Orthopedic Hand Exam encounters are projected? (W)
4. How many annual Physical Medicine and Rehabilitation (PM&R) encounters are projected? (W)
5. How many annual EMG Testing encounters are projected? (W)
6. How many annual Chiropractic encounters are projected? (W)

C. Staffing Input Data Statements

1. How many Massage Therapist FTE positions are authorized? (S)
2. How many Orthopedics, Podiatry and Chiropractic Clinic provider FTE positions are authorized? (S)
 - a. How many Orthopedics, Podiatry and Chiropractic Clinic provider FTE positions are authorized to have a private office? (Misc)
 - b. How many Orthopedics, Podiatry and Chiropractic Clinic provider FTE positions are authorized to have a shared office? (Misc)
 - c. How many Orthopedics, Podiatry and Chiropractic Clinic provider FTE positions are authorized to have a cubicle? (Misc)
3. How many Orthopedics, Podiatry and Chiropractic Clinic non-provider FTE positions are authorized? (S)
 - a. How many Orthopedics, Podiatry and Chiropractic Clinic non-provider FTE positions are authorized to have a private office? (Misc)
 - b. How many Orthopedics, Podiatry and Chiropractic Clinic non-provider FTE positions are authorized to have a shared office? (Misc)

- c. How many Orthopedics, Podiatry and Chiropractic Clinic non-provider FTE positions are authorized to have a cubicle? (Misc)

D. Miscellaneous Input Data Statements

1. Is an additional Negative Pressure Isolation Exam Room authorized? (Misc)
2. Is a Private Cast Room for Orthopedics and Podiatry authorized? (Misc)
3. Is a General Radiography Room for Orthopedics and Podiatry authorized? (Misc)
4. Is a dedicated room for the portable Ultrasound and C-Arm units for Orthopedics and Podiatry authorized? (Misc)
5. Is Sub-Waiting for the Orthopedics, Podiatry and Chiropractic Staff and Administrative Area authorized? (Misc)
6. Is a Patient Records Storage Room in the Staff and Administrative Area authorized? (Misc)
7. How many Orthopedics, Podiatry and Chiropractic Clinic FTEs will work on peak shift? (Misc)
8. (1) Are the Orthopedics, Podiatry, and Chiropractic Clinics authorized to operate outside the standard 8-hour per day shift? (Misc)
 - a. (2) Are the Orthopedics, Podiatry, and Chiropractic Clinics authorized to operate a 7-hour per day shift? (Misc) (If not, a 6-hour per day shift will be used to calculate workload driven spaces)
9. (3) Are the Orthopedics, Podiatry, and Chiropractic Clinics authorized to operate outside the standard 240 days per year? (Misc)
 - a. (4) Are the Orthopedics, Podiatry, and Chiropractic Clinics authorized to operate 250 days per year? (Misc) (If not, 232 days per year will be used to calculate workload driven spaces)

5 SPACE PLANNING CRITERIA: ORTHOPEDICS, PODIATRY, and CHIROPRACTIC CLINIC

For calculation of the number of Vending Machine areas, Public Toilets, Communication Closets, and Janitors Closets for this Chapter, please refer to DoD Space Planning Criteria Chapter 6.1: Common Areas.

A. FA 1: Orthopedics, Podiatry, PM&R and Chiropractic Clinic Reception Area:

1. **Waiting,**
Orthopedics, Podiatry, PM&R and Chiropractic Clinic (WRC01)..... 120 NSF
Minimum NSF; provide an additional 60 NSF for every increment of four Orthopedic, Podiatry, Orthopedic Hand, and PM&R Exam Rooms; EMG Testing Room, and Chiropractic Treatment Room greater than four.

 Minimum allocated NSF accommodates three standard seats at 16 NSF plus one wheelchair space at 25 NSF and one bariatric bench seat at 36 NSF and circulation area. Depending on the concept of operations for this chapter, waiting space across all units may be combined or dispersed.
2. **Playroom (PLAY1) 120 NSF**
Provide one for Orthopedics, Podiatry and Chiropractic Clinic.

 This space is provided to accommodate children’s play activities; it shall be outfitted with appropriate furniture and accessories. It can be an open or enclosed area included in or adjacent to General Waiting.
3. **Reception (RECP1) 120 NSF**
Minimum NSF; provide an additional 30 NSF for every increment of twelve Orthopedic Podiatry, Orthopedic Hand, and PM&R Exam Rooms; EMG Testing

Room, and Chiropractic Treatment Room greater than twelve.

Allocated NSF accommodates up to four receptionists and circulation.

- 4. **Kiosk, Patient Check-in (CLSC1)****30 NSF**
Provide one for Orthopedics, Podiatry and Chiropractic Clinic.
- 5. **Patient Education (CLSC3)**.....**120 NSF**
Provide one for Orthopedics, Podiatry and Chiropractic Clinic.
 Room used for one-on-one patient education and includes space for family to accompany the patient.
- 6. **Consult Room (OFDC2)****120 NSF**
Provide one for Orthopedics, Podiatry and Chiropractic Clinic.
- 7. **Alcove, Wheelchair (SRLW1)**..... **60 NSF**
Provide one for Orthopedics, Podiatry and Chiropractic Clinic.

B. FA 2: Orthopedics and Podiatry Clinic Patient Area:

- 1. **Sub-Waiting, Pre-Procedure Patient (WRC03)****60 NSF**
Minimum NSF; provide an additional 30 NSF per each Orthopedics and Podiatry Procedure Room greater than two.
 This room provides space for patient waiting in a chair prior to proceeding to procedure room. Allocated NSF accommodates three standard seats at 18 NSF and circulation area.
- 2. **Sub-Waiting, Post-Procedure Patient (WRC03)****60 NSF**
Minimum NSF; provide an additional 30 NSF per each Orthopedics and Podiatry Procedure Room greater than two.
 This room provides space for patient waiting in a chair post procedure prior to going home. Allocated NSF accommodates three standard seats at 18 NSF and circulation area.
- 3. **Cubicle, Patient Dressing (DR001)**.....**60 NSF**
Provide one per each Orthopedics and Podiatry Procedure Room.
 Allocated NSF provides space for a seat or bench, mirror, locker for securing valuables and provisions for hanging patients' clothing. Cubicles should be provided convenient to the waiting areas and procedure rooms and may be grouped together.
- 4. **Toilet, Patient (TLTU1)****60 NSF**
Provide one for Orthopedics and Podiatry.
- 5. **Procedure Room, Orthopedics and Podiatry (TROR1)**.....**180 NSF**
Minimum one; provide an additional one for every increment of six Orthopedic, Podiatry and Orthopedic Hand Exam Rooms greater than six.
 For minor procedures under local anesthesia, joint injections, wound closure, etc. (If this Clinic is associated with a Hospital, and an Operating Room is desired, recommend referring planner to the Surgery Chapter (Inpatient and Ambulatory) to add that room with its associated spaces).
- 6. **Exam Room, Orthopedic (EXRG1)****120 NSF**
Minimum two if the projected annual Orthopedic Exam encounters is between 410 and 4,096; provide an additional one for every increment of 2,048 projected

annual Orthopedic Exam greater than 4,096; the minimum workload to generate an additional Orthopedic Exam Room is 410. (Refer to Section 3)

7. **Exam Room, Negative Pressure Isolation (EXRG6)..... 120 NSF**
Minimum one; provide an additional one per each Negative Pressure Isolation Exam Room authorized greater than one.

 The number, location and type of airborne infection isolation and protective environment rooms shall be determined by the infection control risk assessment (ICRA), which shall be conducted during the early planning phase of a project.
8. **Toilet, Isolation Patient (TLTU1) 60 NSF**
Provide one per each Negative Pressure Isolation Exam Room.
9. **Exam Room, Bariatric (EXB01) 120 NSF**
Provide one if a Bariatric Exam Room is authorized for Orthopedics and Podiatry Patient Area.
10. **Toilet, Bariatric Patient (TLTB1) 60 NSF**
Provide one for the Bariatric Exam Room.
11. **Exam Room, Orthopedic Hand (EXRG1)..... 120 NSF**
Minimum one if the projected annual Orthopedic Hand Exam encounters is between 922 and 4,608; provide an additional one for every increment of 4,608 projected annual Orthopedic Hand Exam greater than 4,608; the minimum workload to generate an additional Orthopedic Hand Exam Room is 922. (Refer to Section 3)
12. **Exam Room, Podiatry (EXP01) 120 NSF**
Minimum two if the projected annual Podiatry Exam encounters is between 614 and 6,144; provide an additional one for every increment of 3,072 projected annual Podiatry Exam greater than 6,144; the minimum workload to generate an additional Podiatry Exam Room is 614. (Refer to Section 3)
13. **Cast Room, Multi-Station (OPCR2)..... 360 NSF**
Minimum NSF; provide an additional 180 NSF for every increment of four Orthopedic, Podiatry and Orthopedic Hand Exam Rooms greater than eight.

 Minimum allocated NSF provides space for two casting stations, including a sink.
14. **Cast Room, Private (OPCR1) 180 NSF**
Provide one if a Private Cast Room for Orthopedics and Podiatry is authorized.
15. **General Radiography Room (XDR01)..... 300 NSF**
Provide one if a General Radiography Room for Orthopedics and Podiatry is authorized.
16. **Ultrasound / Portable C-Arm Room (XDUS1)..... 120 NSF**
Provide one if a dedicated room for the portable Ultrasound and C-Arm units is authorized.

 This room is provided to store this equipment and image the patient as well.
17. **Toilet, Procedure Patient (TLTU1) 60 NSF**
Minimum one; provide an additional one for every increment of four Procedure and Exam Rooms greater than four.

- 18. **Viewing Room, Picture Archiving and Communication System (PACS) (XVC01) 120 NSF**
Provide one for Orthopedics and Podiatry.
- 19. **Storage, Plaster (SRS01) 120 NSF**
Minimum NSF; provide an additional 60 NSF for every increment of five Orthopedic, Podiatry and Orthopedic Hand Exam Rooms greater than ten.
- 20. **Storage, Splint and Crutch (SRCS1) 120 NSF**
Minimum NSF; provide an additional 60 NSF for every increment of five Orthopedic, Podiatry and Orthopedic Hand Exam Rooms greater than ten.

C. FA 3: Physical Medicine and Rehabilitation (PM&R) Clinic Patient Area:

- 1. **Exam Room, PM&R (PTBT1) 180 NSF**
Minimum one if the projected annual Physical Medicine and Rehabilitation (PM&R) encounters is between 410 and 2,048; provide an additional one for every increment of 2,048 projected annual Physical Medicine and Rehabilitation (PM&R) greater than 2,048; the minimum workload to generate an additional PM&R Exam Room is 410. (Refer to Section 3)
- 2. **EMG Testing Room (PTEM1) 120 NSF**
Minimum one if the projected annual EMG Testing encounters is between 205 and 1,024; provide an additional one for every increment of 1,024 projected annual EMG Testing greater than 1,024; the minimum workload to generate an additional EMG Testing Room is 205. (Refer to Section 3)
- 3. **Gymnasium, Rehabilitation (PTEA1) 480 NSF**
Provide one if a Rehabilitation Gymnasium is authorized.
- 4. **Gait Lab (PTGL1) 180 NSF**
Provide one if Gait Lab for Physical Medicine and Rehabilitation (PM&R) is authorized.
- 5. **Toilet, Patient (TLTU1) 60 NSF**
Minimum one; provide an additional one for every increment of four PM&R Exam Room or EMG Testing Room greater than four.

D. FA 4: Chiropractic Clinic Patient Area:

- 1. **Treatment Room, Chiropractic (PTBT1) 180 NSF**
Minimum two if the projected annual Chiropractic encounters is between 614 and 6,144; provide an additional one for every increment of 3,072 projected annual Chiropractic encounters greater than 6,144; the minimum workload to generate an additional Chiropractic Treatment Room is 614. (Refer to Section 3)

Allocated NSF accommodates both the chiropractic exam and treatment capabilities (E-Stim, heat, manipulation).
- 2. **Spinal Decompression Room (PTBT1) 180 NSF**
Minimum one; provide an additional one for every increment of four Chiropractic Treatment Rooms greater than four.

This space is provided to accommodate Spinal Decompression / Traction.
- 3. **Massage Therapy Room (PTBT1) 180 NSF**
Provide one per each Massage Therapist FTE position authorized.

- 4. **Toilet, Patient (TLTU1)**..... 60 NSF
Provide one for Chiropractic Service.

E. FA 5: Orthotics Laboratory Area:

- 1. **Reception (RECP1)**..... 60 NSF
Provide one if an Orthotics Lab is authorized.
- 2. **Kiosk, Patient Check-in (CLSC1)**..... 30 NSF
Provide one if an Orthotics Lab is authorized.
- 3. **Sub-Waiting (WRC03)**..... 60 NSF
Provide one if an Orthotics Lab is authorized.

Allocated NSF accommodates three standard seats at 18 NSF and circulation area.

- 4. **Orthotics Laboratory, Lamination / Molding (APLA1)**..... 120 NSF
Provide one if an Orthotics Lab and a Lamination / Molding Brace Shop are authorized.

This room, along with Orthotics Laboratory Sewing / Shoe, Machine Room, Fitting Room, Adjustment and Modification Area, and Fabrication Area, may constitute the Orthotics Lab.

- 5. **Orthotics Laboratory, Sewing / Shoe (APSH1)** 120 NSF
Provide one if an Orthotics Lab and a Sewing / Shoe Brace Shop are authorized.
- 6. **Orthotics Laboratory, Machine Room (APMS1)**..... 300 NSF
Provide one if an Orthotics Lab and Machine Room Brace Shop are authorized.
- 7. **Orthotics Laboratory, Fitting Room (APFR1)** 120 NSF
Minimum NSF; provide an additional 60 NSF for every increment of two Podiatry Exam Rooms greater than two if an Orthotics Lab is authorized.
- 8. **Orthotics Laboratory, Adjustment and Modification Area (APAM1)** 180 NSF
Provide one if an Orthotics Lab is authorized.
- 9. **Orthotics Laboratory, Fabrication Area (APFB1)** 180 NSF
Provide one if an Orthotics Lab and a Fabrication Area are authorized.
- 10. **Toilet, Patient (TLTU1)**..... 60 NSF
Provide one if an Orthotics Lab is authorized.
- 11. **Storage, Equipment (SRSE1)**..... 120 NSF
Provide one if an Orthotics Lab is authorized.

F. FA 6: Orthopedics, Podiatry, PM&R and Chiropractic Clinic Support Area:

- 1. **Utility Room, Clean (UCCL1)**..... 120 NSF
Minimum NSF; provide an additional 30 NSF for every increment of ten Orthopedics and Podiatry Procedure Rooms, Orthopedic Exam Rooms, Podiatry Exam Rooms, Orthopedic Hand Exam Rooms, PM&R Exam Rooms, EMG Testing Rooms, and Spinal Decompression and Chiropractic Treatment Rooms greater than ten.

Allocated NSF provides space for a work counter, a handwashing station and storage facilities for clean and sterile supplies such as shelving and automated dispensing machines.

2. **Utility Room, Soiled (USCL1)**120 NSF
Minimum NSF; provide an additional 30 NSF for every increment of ten Orthopedics and Podiatry Procedure Rooms, Orthopedic Exam Rooms, Podiatry Exam Rooms, Orthopedic Hand Exam Rooms, PM&R Exam Rooms, EMG Testing Rooms, and Spinal Decompression and Chiropractic Treatment Rooms greater than ten.

 Allocated NSF provides space for a handwashing station, a work counter, space for waste receptacles and soiled linen receptacles and provisions for disposal of liquid waste.
3. **Storage, Wheelchair (SRLW1)**60 NSF
Minimum one; provide an additional one for every increment of ten Orthopedics and Podiatry Procedure Rooms, Orthopedic Exam Rooms, Podiatry Exam Rooms, Orthopedic Hand Exam Rooms, PM&R Exam Rooms, EMG Testing Rooms, and Spinal Decompression and Chiropractic Treatment Rooms greater than ten.
4. **Storage, Equipment (SRSE1)**120 NSF
Minimum NSF; provide an additional 30 NSF for every increment of ten Orthopedics and Podiatry Procedure Rooms, Orthopedic Exam Rooms, Podiatry Exam Rooms, Orthopedic Hand Exam Rooms, PM&R Exam Rooms, EMG Testing Rooms, and Spinal Decompression and Chiropractic Treatment Rooms greater than ten.
5. **Storage, Splint and Crutch (SRCS1)**.....120 NSF
Provide one for Orthopedics, Podiatry and Chiropractic Clinic Service.
6. **Alcove, Crash Cart (RCA01)**30 NSF
Minimum one; provide an additional one for every increment of ten Orthopedics and Podiatry Procedure Rooms, Orthopedic Exam Rooms, Podiatry Exam Rooms, Orthopedic Hand Exam Rooms, PM&R Exam Rooms, EMG Testing Rooms, and Spinal Decompression and Chiropractic Treatment Rooms greater than ten.
7. **Alcove, Ice Machine (ICE01)**.....30 NSF
Provide one for Orthopedics, Podiatry and Chiropractic Clinic Service.
8. **Alcove, Portable Equipment (XRM01)**.....30 NSF
Provide one for Orthopedics, Podiatry and Chiropractic Clinic Service.

G. FA 7: Orthopedics, Podiatry, PM&R and Chiropractic Clinic Staff and Administrative Area:

1. **Office, Clinic Chief (OFA04)**120 NSF
Provide one for the Orthopedics, Podiatry and Chiropractic Clinic.
2. **Office, Executive Assistant (OFA04)**.....120 NSF
Provide one for the Orthopedics, Podiatry and Chiropractic Clinic.
3. **Sub-Waiting (WRC03)**60 NSF
Provide one if Sub-Waiting for the Orthopedics, Podiatry and Chiropractic Staff and Administrative Area is authorized.

 Allocated NSF provides space for minimum of two seats plus circulation.
4. **Office, NCOIC / LCPO / LPO (OFA04)**.....120 NSF
Provide one for the Orthopedics, Podiatry and Chiropractic Clinic.

5. **Team Collaboration Room (WRCH1)** **120 NSF**
Minimum one; provide an additional one for every increment of eight Orthopedic, Orthopedic Hand, Podiatry, PM&R Exams Rooms, EMG Testing Rooms and Chiropractic Treatment Rooms greater than eight.
 Allocated NSF provides space for staff collaboration with touchdown computer stations for documentation and a table with chairs.
6. **Office, Private (OFA04)**..... **120 NSF**
Provide one per each Orthopedics, Podiatry and Chiropractic Clinic provider and non-provider FTE position authorized to have a private office.
7. **Office, Shared (OFA05)**..... **120 NSF**
Provide one for every increment of two Orthopedics, Podiatry and Chiropractic Clinic provider and non-provider FTE positions authorized to have a shared office.
8. **Cubicle (OFA03)**..... **60 NSF**
Provide one per each Orthopedics, Podiatry and Chiropractic Clinic provider and non-provider FTE position authorized to have a cubicle.
 These cubicles may be collocated in a shared space or dispersed as required.
9. **Storage, Patient Records (MRS01)** **120 NSF**
Provide one if Patient Records storage in the Orthopedics, Podiatry and Chiropractic Clinic is authorized.
 The Military Health System is moving towards an integrated electronic medical record. If required, space for paper medical records for patients will be planned.
10. **Conference Room (CRA01)**..... **240 NSF**
Minimum NSF; provide an additional 60 NSF if the total number of FTE provider and non provider positions authorized is greater than ten.
 Planner must determine adequacy and availability of existing Conference Room space and the ability to optimize resources by sharing Conference Room space with other departments.
11. **Copier (RPR01)** **120 NSF**
Provide one for Orthopedics, Podiatry and Chiropractic Clinic.
 This is a room for the copier/printer/scanner. It may be located directly adjacent to the reception area or in the clinic staff support area.
12. **Storage, Office Supplies (SRS01)**..... **60 NSF**
Provide one for Orthopedics, Podiatry and Chiropractic Clinic.
 Allocated NSF provides space for office supplies and patient forms and literature.
13. **Lounge, Staff (SL001)**..... **120 NSF**
Minimum NSF, provide an additional 60 NSF for every increment of five FTEs working on peak shift greater than ten; maximum 360 NSF.
14. **Lockers, Personal Property (LR001)** **30 NSF**
Minimum NSF, provide an additional 3 NSF per each FTE not assigned a private office, shared office or cubicle greater than ten.

H. FA 8: Orthopedics, Podiatry, PM&R and Chiropractic Clinic GME Education / Training Area:

1. **Office, Residency Program Director (OFA04) 120 NSF**
Provide one if a Graduate Medical Education program for Orthopedics, Podiatry and Chiropractic Clinic is authorized.

2. **Resident Collaboration Room (WKTm1).....240 NSF**
Minimum NSF; provide an additional 60 NSF per each Resident / Student FTE position authorized greater than two if a Graduate Medical Education program for Orthopedics, Podiatry and Chiropractic Clinic is authorized.

This room should contain one cubicle per Resident / Student at 60 NSF. In addition to the cubicles, a table with chairs for collaboration space and bookcases will be provided.

3. **Classroom / Conference Room (CLR01) 240 NSF**
Provide one if the total number of Resident / Student FTE positions is greater than five if a Graduate Medical Education program for Orthopedics, Podiatry and Chiropractic Clinic is authorized.

Planner must determine adequacy and availability of existing Classroom / Conference Room space and the ability to optimize resources by sharing Classroom / Conference Room space with other GME programs.

6 PROGRAM DATA REQUIRED (Input Data Questions): SPORTS MEDICINE CLINIC

A. Mission Input Data Statements

1. Is a Sports Medicine Clinic authorized? (M)
a. Is a Graduate Medical Education program for Sports Medicine Clinic authorized? (M)
(1) How many Sports Medicine Clinic Resident / Student FTE positions are authorized? (S)
b. Is a Sports Medicine Clinic Diagnostic Imaging authorized? (M)
c. Is a Sports Medicine Clinic Performance Lab authorized? (M)
(1) Is a Performance Diagnostics Room authorized? (Misc)
(2) Is a Simulation Motion Laboratory authorized? (Misc)
(3) Is a Group Exercise Gymnasium authorized? (Misc)

B. Workload Input Data Statements

- a. How many annual Sports Medicine encounters are projected? (W)

C. Staffing Input Data Statements

- a. How many Sports Medicine Clinic provider FTE positions are authorized? (S)
(1) How many Sports Medicine Clinic provider FTE positions are authorized to have a private office? (Misc)
(2) How many Sports Medicine Clinic provider FTE positions are authorized to have a shared office? (Misc)
(3) How many Sports Medicine Clinic provider FTE positions are authorized to have a cubicle? (Misc)
b. How many Sports Medicine Clinic non-provider FTE positions are authorized? (S)
(1) How many Sports Medicine Clinic non-provider FTE positions are authorized to have a private office? (Misc)

- (2) How many Sports Medicine Clinic non-provider FTE positions are authorized to have a shared office? (Misc)
- (3) How many Sports Medicine Clinic non-provider FTE positions are authorized to have a cubicle? (Misc)

D. Miscellaneous Input Data Statements

- a. How many Single-Station Sport Medicine Treatment Rooms are authorized? (Misc)
- b. Is a Strength and Conditioning Room authorized? (Misc)
- c. Is Aquatic Therapy authorized? (Misc)
 - (1) Is a Small Aquatic Therapy Pool authorized? (Misc)
 - (2) Is a Medium Aquatic Therapy Pool authorized? (Misc)
 - (3) Is a Large Aquatic Therapy Pool authorized? (Misc)
 - (4) Is a Lifeguard cubicle for the Aquatic Therapy Pool authorized? (Misc)
- d. Is a Patient Records Storage Room in the Sports Medicine Clinic authorized? (Misc)
- e. Is Sub-Waiting for the Sports Medicine Staff and Administrative Clinic authorized? (Misc)
- f. How many Sports Medicine Clinic FTEs will work on peak shift? (Misc)
- g. (1) Is the Sports Medicine Clinic authorized to operate outside the standard 8-hour per day shift? (Misc)
 - (1) (2) Is the Sports Medicine Clinic authorized to operate a 7-hour per day shift?
- h. (3) Is the Sports Medicine Clinic authorized to operate outside the standard 240 days per year? (Misc)
 - (1) (4) Is the Sports Medicine Clinic authorized to operate 250 days per year? (Misc) (If not, 232 days per year will be used to calculate workload driven spaces)

7 SPACE PLANNING CRITERIA: SPORTS MEDICINE CLINIC

For calculation of the number of Vending Machine areas, Public Toilets, Communication Closets, and Janitors Closets for this Chapter, please refer to DoD Space Planning Criteria Chapter 6.1: Common Areas.

A. FA 9: Sports Medicine Clinic Reception Area:

- 1. **Waiting, Sports Medicine Clinic (WRC01)..... 120 NSF**
Minimum NSF; provide an additional 60 NSF per each Sports Medicine Treatment Cubicle, Private Treatment Room, and Exam Room greater than two.

Minimum allocated NSF accommodates three standard seats at 16 NSF plus one wheelchair space at 25 NSF and one bariatric bench seat at 36 NSF and circulation area. Depending on the concept of operations for this chapter, waiting space across all units may be combined or dispersed.

- 2. **Reception (RECP1)..... 120 NSF**
Minimum NSF; provide an additional 30 NSF for every increment of twelve Sports Medicine Treatment Cubicles, Private Treatment Rooms, and Exam Rooms greater than twelve.

Allocated NSF accommodates up to four receptionists and circulation.

- 3. **Kiosk, Patient Check-in (CLSC1)..... 30 NSF**
Provide one for Sports Medicine Clinic.

4. **Patient Education (CLSC3)** 120 NSF
Provide one for Sports Medicine Clinic.

Room used for one-on-one patient education and includes space for family to accompany the patient.
5. **Consult Room (OFDC2)** 120 NSF
Provide one for Sports Medicine Clinic.
6. **Alcove, Wheelchair (SRLW1)**.....60 NSF
Provide one for Sports Medicine Clinic.

B. FA 10: Sports Medicine Clinic Patient Area:

1. **Sport Medicine Treatment, Single-Station Room (PTBT1)** 120 NSF
Provide one per each Private Treatment Room authorized.

Allocated NSF provides a private, controlled environment with sufficient room for therapeutic treatment such as soft tissue and joint injections as well as joint aspirations. Sufficient space is provided for the storage of injection supplies and medications as well as counter space for a countertop centrifuge (for platelet rich plasma injections). Space is also provided to utilize the portable ultrasound for ultrasound guided procedures. Sports massage and acupuncture may also take place in this room.
2. **Sports Medicine Treatment, Multi-Station Room (PTTC1)** 120 NSF
Minimum one if the projected annual Sports Medicine encounters is between 614 and 3,072; provide an additional one for every increment of 3,072 projected annual Sports Medicine encounters greater than 3,072; the minimum workload to generate an additional Multi-Station Sports Medicine Treatment Room is 614. (Refer to Section 3)

Allocated NSF accommodates Sports Medicine Treatment Stations that can be grouped together in one treatment area.
3. **Workstation, Sports Medicine Technician (PTCW1)**.....60 NSF
Minimum one; provide one for every increment of three Sports Medicine Treatment Cubicles greater than three.

This space is for the Sports Medicine Technician who supports the Sports Medicine Treatment Cubicle space. Also accommodates space for sink, countertop and hydrocollator unit.
4. **Strength and Conditioning Room (PTEA1)**600 NSF
Provide one if a Strength and Conditioning Room is authorized.

Allocated NSF provides space for a gym focused on functional training rather than traditional weight machines. Space also included for large half-rack systems, cable pull machines, pull-up bars, dip machines, and TRX suspension systems. May also include a field turf area for pushing/pulling sleds and flipping truck tires, etc.
5. **Alcove, Portable Imaging (XRM01)**30 NSF
Provide one for Sports Medicine Clinic.
6. **Alcove, Ice Machine (ICE01)**30 NSF
Provide one for Sports Medicine Clinic.

Locate near the Treatment Cubicles.

- 7. **Locker / Changing Room, Male Patient (LR002)**..... **120 NSF**
Minimum NSF; provide an additional 60 NSF for every increment of two Sports Medicine Treatment Cubicles greater than four.
- 8. **Locker / Changing Room, Female Patient (LR002)**..... **120 NSF**
Minimum NSF; provide an additional 60 NSF for every increment of two Sports Medicine Treatment Cubicles greater than four.
- 9. **Toilet / Shower, Male Patient (TLTS2)** **60 NSF**
Minimum one; provide an additional one for every increment of four Sports Medicine Treatment Cubicles greater than four.
- 10. **Toilet / Shower, Female Patient (TLTS2)** **60 NSF**
Minimum one; provide an additional one for every increment of four Sports Medicine Treatment Cubicles greater than four.

C. FA 11: Sports Medicine Clinic Aquatic Therapy Patient Area:

- 1. **Physical Therapy Aquatic Pool, Small (PTAP1)**..... **500 NSF**
Provide one if Aquatic Therapy and a Small Aquatic Therapy Pool is authorized.
 Allocated NSF accommodates 1 to 5 patients per Physical Therapist performing therapeutic exercises. This may be used for underwater treadmill, lap swimming, and deep water running.
- 2. **Physical Therapy Aquatic Pool, Medium (PTAP2)**..... **2,000 NSF**
Provide one if Aquatic Therapy and a Medium Aquatic Therapy Pool is authorized.
 Allocated NSF accommodates 5 to 20 patients per Physical Therapist performing therapeutic exercises. This may be used for underwater treadmill, lap swimming, and deep water running.
- 3. **Physical Therapy Aquatic Pool, Large (PTAP3)** **3,000 NSF**
Provide one if Aquatic Therapy and a Large Aquatic Therapy Pool is authorized.
- 4. **Cubicle, Lifeguard (OFA03)**..... **60 NSF**
Provide one if Aquatic Therapy and a Small, Medium or Large Aquatic Therapy Pool is authorized.
- 5. **Locker / Changing Room, Aquatic Therapy Male Patient (LR002)** **120 NSF**
Minimum NSF; provide an additional 60 NSF if a Medium Aquatic Therapy Pool is authorized; provide an additional 120 NSF if a Large Aquatic Therapy Pool is authorized.
- 6. **Locker / Changing Room, Aquatic Therapy Female Patient (LR002)**.. **120 NSF**
Minimum NSF; provide an additional 60 NSF if a Medium Aquatic Therapy Pool is authorized; provide an additional 120 NSF if a Large Aquatic Therapy Pool is authorized.
- 7. **Toilet / Shower, Aquatic Therapy Male Patient (TLTS2)**..... **60 NSF**
Minimum NSF; provide an additional one if a Medium Aquatic Therapy Pool is authorized; provide an additional two if a Large Aquatic Therapy Pool is authorized.
- 8. **Toilet / Shower, Aquatic Therapy Female Patient (TLTS2)**..... **60 NSF**
Minimum NSF; provide an additional one if a Medium Aquatic Therapy Pool is authorized; provide an additional two if a Large Aquatic Therapy Pool is authorized.

authorized.

- 9. **Storage, Pool Equipment (SRSE1)**..... **120 NSF**
Minimum NSF; provide an additional 120 NSF if a Medium Aquatic Therapy Pool is authorized; provide an additional 240 NSF if a Large Aquatic Therapy Pool is authorized.
- 10. **Storage, Chemical / Pump Room (SRHM1)** **120 NSF**
Minimum NSF; provide an additional one if a Medium Aquatic Therapy Pool is authorized; provide an additional two if a Large Aquatic Therapy Pool is authorized.
- 11. **Alcove, Clean Linen (LCCL3)** **30 NSF**
Provide one if Aquatic Therapy and a Small, Medium or Large Aquatic Therapy Pool is authorized.
- 12. **Alcove, Soiled Linen (LCCL3)**..... **30 NSF**
Provide one if Aquatic Therapy and a Small, Medium or Large Aquatic Therapy Pool is authorized.

D. FA 12: Sports Medicine Clinic Performance Lab Patient Area:

- 1. **Classroom (CLR01)**..... **240 NSF**
Provide one if Sports Medicine Clinic Performance Lab is authorized.
 Allocated NSF provides space for patient education with video capabilities.
- 2. **Performance Diagnostics (PTES1)** **240 NSF**
Provide one if Performance Diagnostics and Sports Medicine Clinic Performance Lab is authorized.
 Allocated NSF provides multi-station space for tests like VO2 max testing, Wingate testing, functional movement testing including y-balance, and body composition testing.
- 3. **Laboratory, Simulation Motion (PTIS1)** **240 NSF**
Provide one if a Simulation Motion Laboratory and Sports Medicine Clinic Performance Lab is authorized.
 Allocated NSF provides space for video movement evaluation. This includes video gait analysis with space for cameras, lighting, and a treadmill; open space for recording functional movement assessment; a wall mounted video monitor for gait re-training located in front of the gait analysis treadmill.
- 4. **Exam Room, Sports Medicine (EXRG1)**..... **120 NSF**
Provide one per each Performance Diagnostics and Simulation Motion Laboratory authorized and if Sports Medicine Clinic Performance Lab is authorized.
- 5. **Communications Room, Simulation Lab (CMP02)**..... **120 NSF**
Provide one if a Simulation Motion Laboratory and Sports Medicine Clinic Performance Lab is authorized.
 Allocated NSF provides space for Video Server / Storage / CDs.
- 6. **Equipment Room, Simulation Lab (SRSE1)** **120 NSF**
Provide one if a Simulation Motion Laboratory and Sports Medicine Clinic Performance Lab is authorized.
 Allocated NSF provides space for video equipment.

- 7. **Gymnasium, Group Exercise (PTEA1)** 1,200 NSF
Provide one if a Group Exercise Gymnasium and Sports Medicine Clinic Performance Lab is authorized.
 Allocated NSF provides an open area for functional rehabilitation classes, spin classes, yoga classes, etc. It may include an area dedicated to TRX suspension training (attached to the wall or can be purchased as a large rack system on rollers to accommodate groups up to 22 participants).
- 8. **Locker / Changing Room, Male Patient (LR002)** 120 NSF
Provide one if Sports Medicine Clinic Performance Lab is authorized.
- 9. **Locker / Changing Room, Female Patient (LR002)**..... 120 NSF
Provide one if Sports Medicine Clinic Performance Lab is authorized.
- 10. **Toilet / Shower, Male Patient (TLTS2)** 60 NSF
Provide one if Sports Medicine Clinic Performance Lab is authorized.
- 11. **Toilet / Shower, Female Patient (TLTS2)** 60 NSF
Provide one if Sports Medicine Clinic Performance Lab is authorized.

E. FA 13: Sports Medicine Clinic Diagnostic Imaging Patient Area:

- 1. **Sub-Waiting, Diagnostic Imaging (WRC03)** 60 NSF
Provide one if Sports Medicine Clinic Diagnostic Imaging is authorized.
 Allocated NSF accommodates three standard seats at 18 NSF and circulation area.
- 2. **Consult Room (OFDC2)**..... 120 NSF
Provide one if Sports Medicine Clinic Diagnostic Imaging is authorized.
- 3. **Cubicle, Patient Dressing (DR001)** 60 NSF
Provide two if Sports Medicine Clinic Diagnostic Imaging is authorized.
 Allocated NSF provides space for a seat or bench, mirror, locker for securing valuables and provisions for hanging patients' clothing. Cubicles should be provided convenient to the waiting areas and procedure rooms and may be grouped together.
- 4. **General Radiography Room (XDR01)**..... 300 NSF
Provide one if Sports Medicine Clinic Diagnostic Imaging is authorized.
- 5. **Ultrasound / Portable C-Arm Room (XDUS1)**..... 180 NSF
Provide one if Sports Medicine Clinic Diagnostic Imaging is authorized.
 This space is for storage of C-Arm / Ultrasound and Musculoskeletal Ultrasounds
- 6. **Viewing Room, Picture Archiving and Communication System (PACS) (XVC01)**..... 120 NSF
Provide one if Sports Medicine Clinic Diagnostic Imaging is authorized.

F. FA 14: Sports Medicine Clinic Support Area:

- 1. **Utility Room, Clean (UCCL1)**..... 120 NSF
Provide one if Sports Medicine Clinic is authorized.
 Allocated NSF provides space for a work counter, a handwashing station and storage facilities for clean and sterile supplies such as shelving and automated dispensing machines.

2. **Utility Room, Soiled (USCL1)** 120 NSF
Provide one if Sports Medicine Clinic is authorized.
 Allocated NSF provides space for a handwashing station, a work counter, space for waste receptacles and soiled linen receptacles and provisions for disposal of liquid waste.
3. **Storage, Equipment (SRSE1)** 120 NSF
Provide one if Sports Medicine Clinic is authorized.
4. **Alcove, Crash Cart (RCA01)** 30 NSF
Provide one if Sports Medicine Clinic is authorized.

G. FA 15: Sports Medicine Clinic Staff and Administrative Area:

1. **Office, Clinic Chief (OFA04)** 120 NSF
Provide one for the Sports Medicine Clinic.
2. **Office, Executive Assistant (OFA04)**..... 120 NSF
Provide one for the Sports Medicine Clinic.
3. **Sub-Waiting (WRC03)** 60 NSF
Provide one if waiting for the Sports Medicine Staff and Administrative Clinic is authorized.
 Allocated NSF provides space for minimum of two seats plus circulation.
4. **Office, NCOIC / LCPO / LPO (OFA04)**..... 120 NSF
Provide one for the Sports Medicine Clinic.
5. **Team Collaboration Room (WRCH1)** 120 NSF
Minimum NSF; provide an additional one for every increment of eight Sports Medicine Treatment Cubicle, Private Treatment Room and Sports Medicine Exam Room greater than eight.
 Allocated NSF provides space for staff collaboration with touchdown computer stations for documentation and a table with chairs.
6. **Office, Private (OFA04)** 120 NSF
Provide one per each Sports Medicine Clinic provider and non-provider FTE position authorized to have a private office.
7. **Office, Shared (OFA05)**..... 120 NSF
Provide one for every increment of two Sports Medicine Clinic provider and non-provider FTE positions authorized to have a shared office.
8. **Cubicle (OFA03)** 60 NSF
Provide one per each Sports Medicine Clinic provider and non-provider FTE position authorized to have a cubicle.
9. **Storage, Patient Records (MRS01)**..... 120 NSF
Provide one if Patient Records storage in the Sports Medicine Clinic is authorized.
 The Military Health System is moving towards an integrated electronic medical record. If required, space for paper medical records for patients will be planned.
10. **Conference Room (CRA01)** 240 NSF
Minimum NSF; provide an additional 60 NSF if the total number of FTE provider and non provider positions authorized is greater than ten.

Planner must determine adequacy and availability of existing Conference Room space and the ability to optimize resources by sharing Conference Room space with other departments.

- 11. **Copier (RPR01)** **120 NSF**
Provide one for Sports Medicine Clinic.

This is a room for the copier/printer/scanner. It may be located directly adjacent to the reception area or in the clinic staff support area.

- 12. **Storage, Office Supplies (SRS01)** **60 NSF**
Provide one for Sports Medicine Clinic.

Allocated NSF provides space for office supplies, patient forms and literature.

- 13. **Lounge, Staff (SL001)** **120 NSF**
Minimum NSF, provide an additional 60 NSF for every increment of five Sports Medicine Clinic provider and non-provider FTEs working on peak shift greater than ten; maximum 360 NSF.

- 14. **Lockers, Personal Property (LR001)** **30 NSF**
Minimum NSF, provide an additional 3 NSF per each Sports Medicine Clinic FTE not assigned a private office, shared office or cubicle greater than ten.

H. FA 16: Sports Medicine Clinic GME Education / Training Area:

- 1. **Office, Residency Program Director (OFA04)** **120 NSF**
Provide one if a Graduate Medical Education program for Sports Medicine Clinic is authorized.

- 2. **Resident Collaboration Room (WKTM1)** **240 NSF**
Minimum NSF; provide an additional 60 NSF per each Resident / Student FTE position authorized greater than two if a Graduate Medical Education program for Sports Medicine Clinic is authorized.

This room should contain one cubicle per Resident / Student at 60 NSF. In addition to the cubicles, a table with chairs for collaboration space and bookcases will be provided.

- 3. **Classroom / Conference Room (CLR01)** **240 NSF**
Provide one if the total number of Resident / Student FTE positions is greater than five if a Graduate Medical Education program for Sports Medicine Clinic is authorized.

Planner must determine adequacy and availability of existing Classroom / Conference Room space and the ability to optimize resources by sharing Classroom / Conference Room space with other GME programs.

8 PLANNING AND DESIGN CONSIDERATIONS

The following design considerations are intended to provide planners and designers with guidance on how to follow world-class and evidence-based design strategies for new and renovation of existing healthcare facilities. For a more comprehensive list, refer to the *World Class Checklist* (<https://facilities.health.mil/home/>). Also refer to Section 1.2 – 6, Design Considerations and Requirements of the latest version of *Guidelines for Design and Construction of Health Care Facilities of the Facility Guidelines Institute (FGI)*.

A. Net-to-Department Gross Factor

1. The net-to-department gross (NTDG) factor for the Orthopedics, Podiatry, Chiropractic, and Sports Medicine Clinic is **1.35**. This number, when multiplied by the programmed net square foot (NSF), area determines the departmental gross square feet. This factor accounts for the space occupied by internal department circulation and interior partitions and other construction elements not defined by the net square foot area.

B. Reception Areas

1. Where possible, centralized intake should be considered where multiple clinics are colocated.
2. Consider designing clinic areas such that walking distances from intake to exam are kept to a minimum.
3. Visual and auditory privacy is required at intake, vitals collection, and scheduling activities.
4. Consideration should be given to special needs of specific patient groups in a shared/general waiting area. For example, adolescent and geriatric patients may require different seating options and environments.
5. The Playroom shall be constructed of surfaces and materials that are easy to clean and durable (nonporous and smooth).

C. Patient Areas

1. Exam rooms should be designed with dedicated patient, provider, and family zones where appropriate.
2. Patient care areas should be located near the front of the clinic to minimize patient walking distances and to maximize the "on-stage / off stage" flow.
3. Consider placing high volume, quick turn encounters near the front of the Patient Care area.
4. Provide same-handed patient care and treatment rooms where appropriate.
5. Complete visual privacy for patients in examination, treatment and procedure areas is a critical design consideration.
6. Control of sound transmission between examination, treatment and procedure rooms is a critical design consideration.
7. Consider adopting the same NSF for rooms with similar functions, such as treatment and exam rooms, to achieve standardization.
8. Consider sizing rooms such that conversion from one function to another, like a consult room to exam room, can be achieved more readily.
9. Provisions for bariatric patients should be included where applicable.
10. Consider efficiency of operations and a layout such that walking distances of the routes staff repeatedly take from consult room to the exam rooms, to the work areas (e.g. charting, supplies, medications), back to exam rooms are kept to a minimum.

D. Support Areas

1. Medication preparation areas should be enclosed to minimize distractions. A glass wall or window may be provided to permit observation of patients and clinic activities.

E. Other General Design Considerations

1. Provide flexible, standardized and modular blocks of clinic space that include dedicated zones (e.g. intake/waiting, exam room, support core, administrative core, procedure and diagnostic core, etc.)

2. Functional areas should be designed to provide flexibility in order to accommodate a variety of patient visit types and specialties. Standardized modules should be configured so that clinics can use available adjacent space as demand fluctuates from one clinic to the next.
3. Where possible, clinic modules should include internal connecting corridors to allow circulation of staff, materials and sometimes patients in off-stage areas.
4. Design for flexibility and adaptability to accommodate future expansion.
5. Clearly define patient flows and facilitate wayfinding.
6. Design space to foster effective team collaboration, especially important in innovative care delivery models like the patient-centered medical home model (PCMH). Central location of circulating corridors and visually open workstations will increase the quality and probability of unplanned interactions. Informal meeting spaces along hallways with flexibly arranged furniture and small niches with surfaces that allow stand-up work will encourage informal collaboration. Locating the team collaboration rooms and conference rooms close to individual spaces will promote problem solving.
7. Create separate paths of travel where possible between patients and staff (“on stage” and “off stage”) to support privacy, safety and patient/staff satisfaction.
8. Consider physical layouts and design features which minimize institutional and maximize non-institutional aspects in order to provide a more therapeutic healing environment that promotes quicker recovery.
9. Create welcoming environments for patients and families by reducing environmental stressors. Daylighting, window views of nature, gardens, indoor plants, and nature photography may alleviate patient anxiety, and provide positive distractions in waiting areas and treatment rooms.
10. Where possible, locate clinics proximate to public parking and the main outpatient building entry to improve access and minimize travel distance.
11. Consider convenient access to both the Outpatient Pharmacy and Lab and Diagnostic and Treatment services as needed.
12. Collocate clinics and inpatient units with the same specialty when possible.

F. Orthopedics, Podiatry, Chiropractic and Sports Medicine Clinic Specific Design Considerations

1. Provide automatic opening doors at department entry doors that do not have hold-open devices. The openers allow patients to access or exit the department unassisted.
2. Provide Waiting Room seating with a mix of chairs with and without arms in addition Hip Chairs and wheelchair space.
3. Provide protective wall covering in departmental corridors to protect from damage due to wheelchair and gurney traffic.
4. Design the casting rooms with a large, open, multi-station layout with cubicle curtains separating stations for flexibility. Separate enclosed rooms should be for Full Body applications and excessively noisy patients.
5. Cast Room dust and noise control is required for a safe and clean environment for patient and staff.
6. Design Cast Room to allow access for the portable x-ray unit.
7. If an Orthotics Lab is required by the functional program, the Orthotics Fitting Room must include provision for patient privacy.
8. If a pool for Aquatic Therapy is required by the functional program, the patient dressing area should be directly accessible to the pool without entering public or

exercise areas. As well, a toilet room that is accessible without entering public or exercise areas should be provided.

9 FUNCTIONAL RELATIONSHIPS

Relationship of DoD 312: Orthopedics, Podiatry, Chiropractic and Sports Medicine Clinic to services listed below:

TABLE 2: ORTHOPEDICS AND PODIATRY FUNCTIONAL RELATIONSHIP MATRIX

Services	Relationship	Reasons
Ambulatory Surgery	1, 2, 3	A, E, G, H, I
Emergency Department	1, 2, 3	G, H
General Surgery	1, 2, 3	A, G, I
Radiology (If not in department)	1	G
Parking / Patient Drop-Off	1	H
Physical Therapy	1, 2, 3	A, G, H, I
Occupational Therapy	1, 2, 3	A, G, H, I
PM&R (If not in department)	1, 2, 3	A, G, H, I
Ambulatory Surgery	1, 2, 3	A, G, H, I
Emergency Department	1, 2, 3	G, H

TABLE 3: CHIROPRACTIC CLINIC FUNCTIONAL RELATIONSHIP MATRIX

Services	Relationship	Reasons
Ortho/Podiatry Clinic (If not in department)	1, 2, 3	A, G, H, I
Radiology (If not in department)	1	G
Parking / Patient Drop-Off	1	H
Physical Therapy	1, 2, 3	A, G, H, I
Occupational Therapy	1, 2, 3	A, G, H, I
PM&R (If not in department)	1, 2, 3	A, G, H, I

TABLE 4: SPORTS MEDICINE CLINIC FUNCTIONAL RELATIONSHIP MATRIX

Services	Relationship	Reasons
Ortho/Podiatry Clinic (If not in department)	1, 2, 3	A, G, H, I
Radiology (If not in department)	1	G
Parking / Patient Drop-Off	1	H
Physical Therapy	1, 2, 3	A, G, H, I

(Legend on next page)

Legend:

Relationship:

1. Adjacent
2. Close / Same Floor
3. Close / Different Floor
Acceptable
4. Limited Traffic

Reasons:

(Use as many as appropriate)

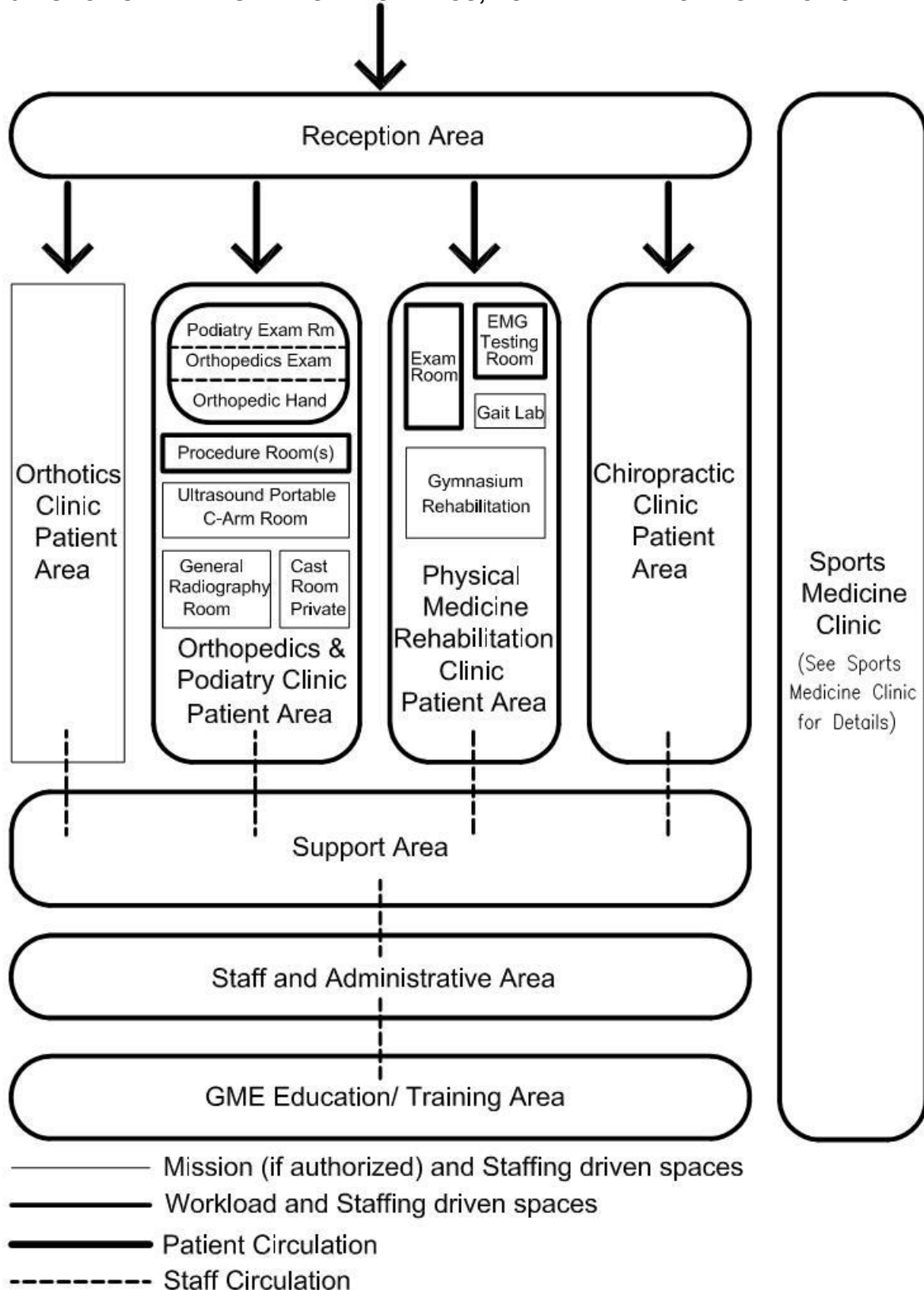
- A. Common use of resources
- B. Accessibility of supplies
- C. Urgency of contact
- D. Noise or vibration
- E. Presence of odors or fumes
- F. Contamination hazard
- G. Sequence of work
- H. Patient's convenience
- I. Frequent contact
- J. Need for security
- K. Others (specify)

10 FUNCTIONAL DIAGRAM

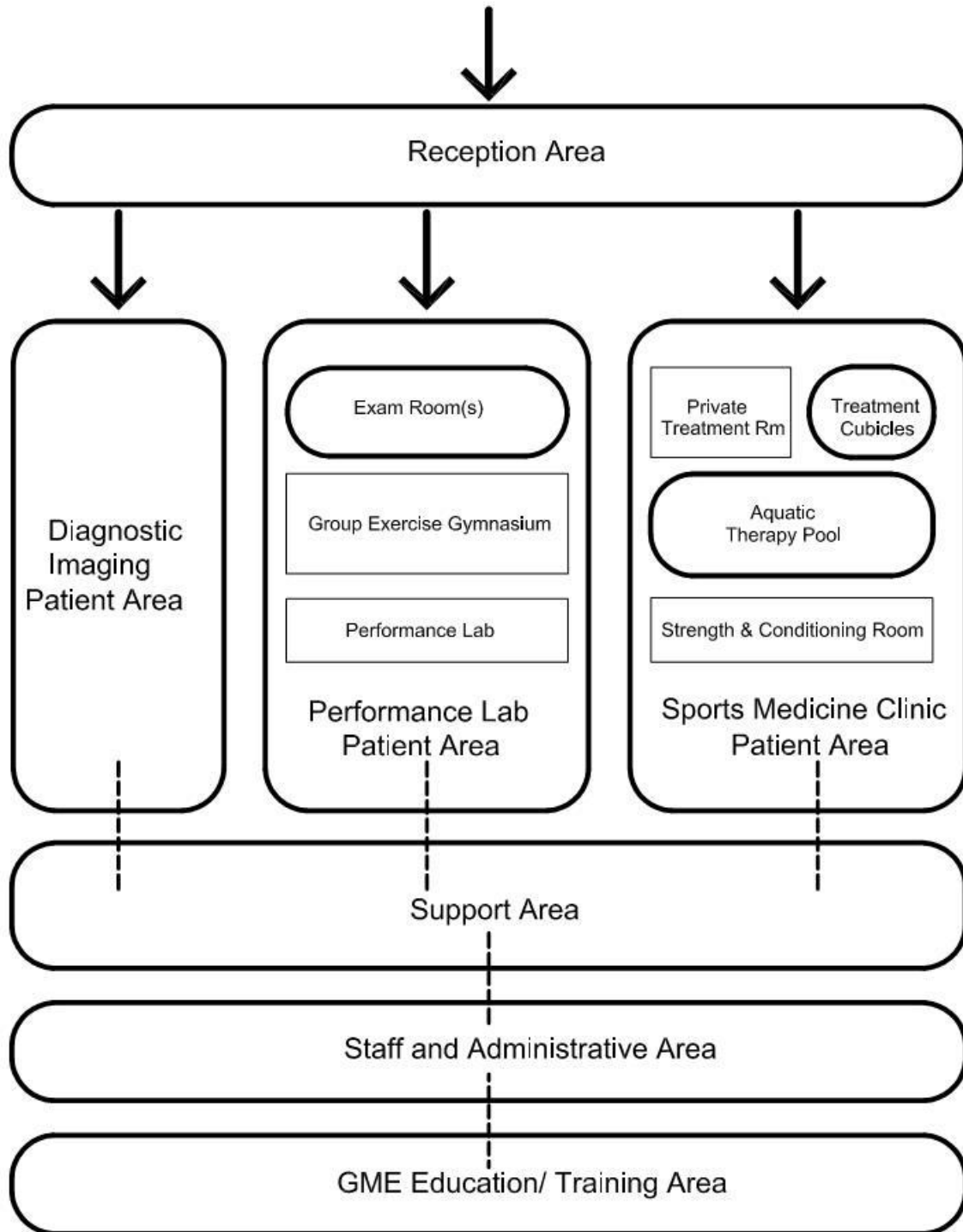
Functional Diagrams show the relationship of each functional area to the whole department. In some instances it shows important spaces within a functional area and how staff and patients may flow through the department. This diagram is not intended to serve as a "bubble diagram" that the planner / designer will create for an individual project. Size and shapes of spaces do not reflect actual configuration or square footage of spaces / rooms.

Refer to Functional Diagram(s) on next page(s)

10 FUNCTIONAL DIAGRAM ORTHOPEDICS, PODIATRY AND CHIROPRACTIC



11 FUNCTIONAL DIAGRAM SPORTS MEDICINE CLINIC



- Mission (if authorized) and Staffing driven spaces
- Workload and Staffing driven spaces
- Patient Circulation
- - - - - Staff Circulation

12 Appendix A: SPACE PLANNING CRITERIA SUMMARY

FA 1: Orthopedics, Podiatry, PM&R and Chiropractic Clinic Reception Area:

Room Name	Room Code	NSF	Space Criteria
Waiting, Orthopedics, Podiatry and Chiropractics Clinic	WRC01	120	Minimum NSF; provide an additional 60 NSF for every increment of four Orthopedic, Podiatry, Orthopedic Hand, and PM&R Exam Rooms; EMG Testing Room, and Chiropractics Treatment Room greater than four.
Playroom	PLAY1	120	Provide one for Orthopedics, Podiatry and Chiropractics Clinic.
Reception	RECP1	120	Minimum NSF; provide an additional 30 NSF for every increment of twelve Orthopedic Podiatry, Orthopedic Hand, and PM&R Exam Rooms; EMG Testing Room, and Chiropractic Treatment Room greater than twelve.
Kiosk, Patient Check-in	CLSC1	30	Provide one for Orthopedics, Podiatry and Chiropractics Clinic.
Patient Education	CLSC3	120	Provide one for Orthopedics, Podiatry and Chiropractics Clinic.
Consult Room	OFDC2	120	Provide one for Orthopedics, Podiatry and Chiropractics Clinic.
Alcove, Wheelchair	SRLW1	30	Provide one for Orthopedics, Podiatry and Chiropractics Clinic.

FA2: Orthopedics and Podiatry Clinic Patient Area:

Room Name	Room Code	NSF	Space Criteria
Sub-Waiting, Pre-Procedure Patient	WRC03	60	Minimum NSF; provide an additional 30 NSF per each Orthopedics and Podiatry Procedure Room greater than two.
Sub-Waiting, Post-Procedure Patient	WRC03	60	Minimum NSF; provide an additional 30 NSF per each Orthopedics and Podiatry Procedure Room greater than two.

Cubicle, Patient Dressing	DR001	60	Provide one per each Orthopedics and Podiatry Procedure Room.
Toilet, Patient	TLTU1	60	Provide one for Orthopedics and Podiatry.
Procedure Room, Orthopedics and Podiatry	TROR1	180	Minimum one; provide an additional one for every increment of six Orthopedic, Podiatry and Orthopedic Hand Exam Rooms greater than six.
Exam Room, Orthopedic	EXRG1	120	Minimum two; provide an additional one for every increment of 2,048 projected annual Orthopedic Exam encounters greater than 4,096; the minimum workload to generate a room is 410. (Refer to Table 1)
Exam Room, Negative Pressure Isolation	EXRG6	120	Minimum one; provide an additional one per each Negative Pressure Isolation Exam Room authorized greater than one.
Toilet, Isolation Patient	TLTU1	60	Provide one per each Negative Pressure Isolation Exam Room.
Exam Room, Bariatric	EXB01	120	Provide one if a Bariatric Exam Room is authorized for Orthopedics and Podiatry Patient Area.
Toilet, Bariatric Patient	TLTB1	60	Provide one for the Bariatric Exam Room.
Exam Room, Orthopedic Hand	EXRG1	120	Provide one for every increment of 4,608 projected annual Orthopedic Hand Exam encounters; the minimum workload to generate a room is 922. (Refer to Table 1)
Exam Room, Podiatry	EXP01	120	Minimum two; provide an additional one for every increment of 3,072 projected annual Podiatry Exam encounters greater than 6,144; the minimum workload to generate a room is 614. (Refer to Table 1)
Cast Room, Multi-Station	OPCR2	360	Minimum NSF; provide an additional 180 NSF for every increment of four Orthopedic, Podiatry and Orthopedic Hand Exam Rooms greater than eight.

Cast Room, Private	OPCR1	180	Provide one if a Private Cast Room for Orthopedics and Podiatry is authorized.
General Radiography Room	XDR01	300	Provide one if a General Radiography Room for Orthopedics and Podiatry is authorized.
Ultrasound / Portable C-Arm Room	XDUS1	120	Provide one if a dedicated room for the portable Ultrasound and C-Arm units is authorized.
Toilet, Procedure Patient	TLTU1	60	Minimum one; provide an additional one for every increment of four Procedure and Exam Rooms greater than four.
Viewing Room, Picture Archiving and Communication System (PACS)	XVC01	120	Provide one for Orthopedics and Podiatry.
Storage, Plaster	SRS01	120	Minimum NSF; provide an additional 60 NSF for every increment of five Orthopedic, Podiatry and Orthopedic Hand Exam Rooms greater than ten.
Storage, Splint and Crutch	SRCS1	120	Minimum NSF; provide an additional 60 NSF for every increment of five Orthopedic, Podiatry and Orthopedic Hand Exam Rooms greater than ten.

FA3: Physical Medicine and Rehabilitation (PM&R) Clinic Patient Area:

Room Name	Room Code	NSF	Space Criteria
Exam Room, PM&R	PTBT1	180	Minimum one; provide an additional one for every increment of 2,048 projected annual Physical Medicine and Rehabilitation (PM&R) encounters greater than 2,048; the minimum projected workload to generate a room is 410. (Refer to Table 1)
EMG Testing Room	PTEM1	120	Minimum one; provide an additional one for every increment of 1,024 projected annual EMG Testing encounters greater than 1,024; the minimum projected workload to generate a room is 205. (Refer to Table 1)
Gymnasium, Rehabilitation	PTEA1	480	Provide one if a Rehabilitation Gymnasium is authorized.

Gait Lab	PTGL1	180	Provide one if Gait Lab for Physical Medicine and Rehabilitation (PM&R) is authorized.
Toilet, Patient	TLTU1	60	Minimum one; provide an additional one for every increment of four PM&R Exam Room or EMG Testing Room greater than four.

FA4: Chiropractic Clinic Patient Area:

Room Name	Room Code	NSF	Space Criteria
Treatment Room, Chiropractics	PTBT1	180	Minimum two; provide an additional two for every increment of 6,144 (3,072 x 2) projected annual Chiropractics encounters; the minimum projected workload to generate a room is 1,229 (614 x 2). (Refer to Table 1)
Spinal Decompression Room	PTBT1	180	Minimum one; provide an additional one for every increment of four Chiropractics Treatment Rooms greater than four.
Massage Therapy Room	PTBT1	180	Provide one per each Massage Therapist FTE position authorized.
Toilet, Patient	TLTU1	60	Provide one for Chiropractic Service.

FA5: Orthotics Laboratory Area:

Room Name	Room Code	NSF	Space Criteria
Reception	RECP1	60	Provide one if an Orthotics Lab is authorized.
Kiosk, Patient Check-in	CLSC1	30	Provide one if an Orthotics Lab is authorized.
Sub-Waiting	WRC03	60	Provide one if an Orthotics Lab is authorized.
Orthotics Laboratory, Lamination / Molding	APLA1	120	Provide one if an Orthotics Lab and a Lamination / Molding Brace Shop are authorized.
Orthotics Laboratory, Sewing / Shoe	APSH1	120	Provide one if an Orthotics Lab and a Sewing / Shoe Brace Shop are authorized.

Orthotics Laboratory, Machine Room	APMS1	300	Provide one if an Orthotics Lab and Machine Room Brace Shop are authorized.
Orthotics Laboratory, Fitting Room	APFR1	120	Minimum NSF; provide an additional 60 NSF for every increment of two Podiatry Exam Rooms greater than two if an Orthotics Lab is authorized.
Orthotics Laboratory, Adjustment and Modification Area	APAM1	180	Provide one if an Orthotics Lab is authorized.
Orthotics Laboratory, Fabrication Area	APFB1	180	Provide one if an Orthotics Lab and a Fabrication Area are authorized.
Toilet, Patient	TLTU1	60	Provide one if an Orthotics Lab is authorized.
Storage, Equipment	SRSE1	120	Provide one if an Orthotics Lab is authorized.

FA6:Orthopedics, Podiatry, PM&R and Chiropractic Clinic Support Area:

Room Name	Room Code	NSF	Space Criteria
Utility Room, Clean	UCCL1	120	Minimum NSF; provide an additional 30 NSF for every increment of ten Orthopedics and Podiatry Procedure Rooms, Orthopedic Exam Rooms, Podiatry Exam Rooms, Orthopedic Hand Exam Rooms, PM&R Exam Rooms, EMG Testing Rooms, and Spinal Decompression and Chiropractics Treatment Rooms greater than ten.
Utility Room, Soiled	USCL1	120	Minimum NSF; provide an additional 30 NSF for every increment of ten Orthopedics and Podiatry Procedure Rooms, Orthopedic Exam Rooms, Podiatry Exam Rooms, Orthopedic Hand Exam Rooms, PM&R Exam Rooms, EMG Testing Rooms, and Spinal Decompression and Chiropractics Treatment Rooms greater than ten.

Storage, Wheelchair	SRLW1	30	Minimum one; provide an additional one for every increment of ten Orthopedics and Podiatry Procedure Rooms, Orthopedic Exam Rooms, Podiatry Exam Rooms, Orthopedic Hand Exam Rooms, PM&R Exam Rooms, EMG Testing Rooms, and Spinal Decompression and Chiropractics Treatment Rooms greater than ten.
Storage, Equipment	SRSE1	120	Minimum NSF; provide an additional 30 NSF for every increment of ten Orthopedics and Podiatry Procedure Rooms, Orthopedic Exam Rooms, Podiatry Exam Rooms, Orthopedic Hand Exam Rooms, PM&R Exam Rooms, EMG Testing Rooms, and Spinal Decompression and Chiropractics Treatment Rooms greater than ten.
Storage, Splint and Crutch	SRCS1	120	Provide one for Orthopedics, Podiatry and Chiropractics Clinic Service.
Alcove, Crash Cart	RCA01	30	Minimum one; provide an additional one for every increment of ten Orthopedics and Podiatry Procedure Rooms, Orthopedic Exam Rooms, Podiatry Exam Rooms, Orthopedic Hand Exam Rooms, PM&R Exam Rooms, EMG Testing Rooms, and Spinal Decompression and Chiropractics Treatment Rooms greater than ten.
Alcove, Ice Machine	ICE01	30	Provide one for Orthopedics, Podiatry and Chiropractics Clinic Service.
Alcove, Portable Equipment	XRM01	30	Provide one for Orthopedics, Podiatry and Chiropractics Clinic Service.

FA7: Orthopedics, Podiatry, PM&R and Chiropractic Clinic Staff and Administrative Area:

Room Name	Room Code	NSF	Space Criteria
Office, Clinic Chief	OFA04	120	Provide one for the Orthopedics, Podiatry and Chiropractics Clinic.
Office, Executive Assistant	OFA04	120	Provide one for the Orthopedics, Podiatry and Chiropractics Clinic.
Sub-Waiting	WRC03	60	Provide one if Waiting for the Orthopedics, Podiatry and Chiropractics Staff and Administrative Clinic is authorized.
Office, NCOIC / LCPO / LPO	OFA04	120	Provide one for the Orthopedics, Podiatry and Chiropractics Clinic.
Team Collaboration Room	WRCH1	120	Minimum one; provide an additional one for every increment of eight Orthopedic, Orthopedic Hand, Podiatry, PM&R Exams Rooms, EMG Testing Rooms and Chiropractics Treatment Rooms greater than eight.
Office, Private	OFA04	120	Provide one per each Orthopedics, Podiatry and Chiropractics Clinic provider and non-provider FTE position authorized to have a private office.
Office, Shared	OFA05	120	Provide one for every increment of two Orthopedics, Podiatry and Chiropractics Clinic provider and non-provider FTE positions authorized to have a shared office.
Cubicle	OFA03	60	Provide one per each Orthopedics, Podiatry and Chiropractics Clinic provider and non-provider FTE position authorized to have a cubicle.
Storage, Patient Records	MRS01	120	Provide one if Patient Records storage in the Orthopedics, Podiatry and Chiropractics Clinic is authorized.

Conference Room	CRA01	240	Minimum NSF; provide an additional 60 NSF if the total number of FTE provider and non provider positions authorized is greater than ten.
Copier	RPR01	120	Provide one for Orthopedics, Podiatry and Chiropractic Clinic.
Storage, Office Supplies	SRS01	60	Provide one for Orthopedics, Podiatry and Chiropractic Clinic.
Lounge, Staff	SL001	120	Minimum NSF, provide an additional 60 NSF for every increment of five FTEs working on peak shift greater than ten; maximum 360 NSF.
Lockers, Personal Property	LR001	30	Minimum NSF, provide an additional 3 NSF per each FTE not assigned a private office, shared office or cubicle greater than ten.

FA8: Orthopedics, Podiatry, PM&R and Chiropractic Clinic GME Education / Training Area:

Room Name	Room Code	NSF	Space Criteria
Office, Residency Program Director	OFA04	120	Provide one if a Graduate Medical Education program for Orthopedics, Podiatry and Chiropractic Clinic is authorized.
Resident Collaboration Room	WKTM1	240	Minimum NSF; provide an additional 60 NSF per each Resident / Student FTE position authorized greater than two if a Graduate Medical Education program for Orthopedics, Podiatry and Chiropractic Clinic is authorized.
Classroom / Conference Room	CLR01	240	Provide one if the total number of Resident / Student FTE positions is greater than five if a Graduate Medical Education program for Orthopedics, Podiatry and Chiropractic Clinic is authorized.

FA 9: Sports Medicine Clinic Reception Area:

Room Name	Room Code	NSF	Space Criteria
Waiting, Sports Medicine Clinic	WRC01	120	Minimum NSF; provide an additional 60 NSF per each Sports Medicine Treatment Cubicle, Private Treatment Room, and Exam Room greater than two.
Reception	RECP1	120	Minimum NSF; provide an additional 30 NSF for every increment of twelve Sports Medicine Treatment Cubicles, Private Treatment Rooms, and Exam Rooms greater than twelve.
Kiosk, Patient Check-in	CLSC1	30	Provide one for Sports Medicine Clinic.
Patient Education	CLSC3)	120	Provide one for Sports Medicine Clinic.
Consult Room	OFDC2	120	Provide one for Sports Medicine Clinic.
Alcove, Wheelchair	SRLW1	60	Provide one for Sports Medicine Clinic.

FA 10: Sports Medicine Clinic Patient Area:

Room Name	Room Code	NSF	Space Criteria
Sport Medicine Treatment, Single-Station Room	PTBT1	120	Provide one per each Private Treatment Room authorized.
Sports Medicine Treatment, Multi-Station Room	PTTC1	120	Minimum one if the projected annual Sports Medicine encounters is between 614 and 3,072; provide an additional one for every increment of 3,072 projected annual Sports Medicine encounters greater than 3,072; the minimum workload to generate an additional Multi-Station Sports Medicine Treatment Room is 614. (Refer to Section 3)
Workstation, Sports Medicine Technician	PTCW1	60	Minimum one; provide one for every increment of three Sports Medicine Treatment Cubicles greater than three.
Strength and Conditioning Room	PTEA1	600	Provide one if a Strength and Conditioning Room is authorized.

Alcove, Portable Imaging	XRM01	30	Provide one for Sports Medicine Clinic.
Alcove, Ice Machine	ICE01	30	Provide one for Sports Medicine Clinic.
Locker / Changing Room, Male Patient	LR002	120	Minimum NSF; provide an additional 60 NSF for every increment of two Sports Medicine Treatment Cubicles greater than four.
Locker / Changing Room, Female Patient	LR002	120	Minimum NSF; provide an additional 60 NSF for every increment of two Sports Medicine Treatment Cubicles greater than four.
Toilet / Shower, Male Patient	TLTS2	60	Minimum one; provide an additional one for every increment of four Sports Medicine Treatment Cubicles greater than four.
Toilet / Shower, Female Patient	TLTS2	60	Minimum one; provide an additional one for every increment of four Sports Medicine Treatment Cubicles greater than four.

FA 11: Sports Medicine Clinic Aquatic Therapy Patient Area:

Room Name	Room Code	NSF	Space Criteria
Pool, Small Aquatic Therapy	PTAP1	500	Provide one if Aquatic Therapy and a Small Aquatic Therapy Pool is authorized.
Pool, Medium Aquatic Therapy	PTAP2	2000	Provide one if Aquatic Therapy and a Medium Aquatic Therapy Pool is authorized.
Pool, Large Aquatic Therapy	PTAP3	3000	Provide one if Aquatic Therapy and a Large Aquatic Therapy Pool is authorized.
Cubicle, Lifeguard	OFA03	60	Provide one if Aquatic Therapy and a Small, Medium or Large Aquatic Therapy Pool is authorized.
Locker / Changing Room, Aquatic Therapy Male Patient	LR002	120	Minimum NSF; provide an additional 60 NSF if a Medium Aquatic Therapy Pool is authorized; provide an additional 120 NSF if a Large Aquatic Therapy Pool is authorized.

Locker / Changing Room, Aquatic Therapy Female Patient	LR002	120	Minimum NSF; provide an additional 60 NSF if a Medium Aquatic Therapy Pool is authorized; provide an additional 120 NSF if a Large Aquatic Therapy Pool is authorized.
Toilet / Shower, Aquatic Therapy Male Patient	TLTS2	60	Minimum NSF; provide an additional one if a Medium Aquatic Therapy Pool is authorized; provide an additional two if a Large Aquatic Therapy Pool is authorized.
Toilet / Shower, Aquatic Therapy Female Patient	TLTS2	60	Minimum NSF; provide an additional one if a Medium Aquatic Therapy Pool is authorized; provide an additional two if a Large Aquatic Therapy Pool is authorized.
Storage, Pool Equipment	SRSE1	120	Minimum NSF; provide an additional 120 NSF if a Medium Aquatic Therapy Pool is authorized; provide an additional 240 NSF if a Large Aquatic Therapy Pool is authorized.
Storage, Chemical / Pump Room	SRHM1	120	Minimum NSF; provide an additional one if a Medium Aquatic Therapy Pool is authorized; provide an additional two if a Large Aquatic Therapy Pool is authorized.
Alcove, Clean Linen	LCCL3	30	Provide one if Aquatic Therapy and a Small, Medium or Large Aquatic Therapy Pool is authorized.
Alcove, Soiled Linen	LCSL3	30	Provide one if Aquatic Therapy and a Small, Medium or Large Aquatic Therapy Pool is authorized.

FA 12: Sports Medicine Clinic Performance Lab Patient Area:

Room Name	Room Code	NSF	Space Criteria
Classroom	CLR01	240	Provide one if Sports Medicine Clinic Performance Lab is authorized.
Performance Diagnostics	PTES1	240	Provide one if Performance Diagnostics and Sports Medicine Clinic Performance Lab is authorized.

Laboratory, Simulation Motion	PTIS1	240	Provide one if a Simulation Motion Laboratory and Sports Medicine Clinic Performance Lab is authorized.
Exam Room, Sports Medicine	EXRG1	120	Provide one per each Performance Diagnostics and Simulation Motion Laboratory authorized and if Sports Medicine Clinic Performance Lab is authorized.
Communications Room, Simulation Lab	CMP02	120	Provide one if a Simulation Motion Laboratory and Sports Medicine Clinic Performance Lab is authorized.
Equipment Room, Simulation Lab	SRSE1	120	Provide one if a Simulation Motion Laboratory and Sports Medicine Clinic Performance Lab is authorized.
Gymnasium, Group Exercise	PTEA1	1200	Provide one if a Group Exercise Gymnasium and Sports Medicine Clinic Performance Lab is authorized.
Locker / Changing Room, Male Patient	LR002	120	Provide one if Sports Medicine Clinic Performance Lab is authorized.
Locker / Changing Room, Female Patient	LR002	120	Provide one if Sports Medicine Clinic Performance Lab is authorized.
Toilet / Shower, Male Patient	TLTS2	60	Provide one if Sports Medicine Clinic Performance Lab is authorized.
Toilet / Shower, Female Patient	TLTS2	60	Provide one if Sports Medicine Clinic Performance Lab is authorized.

FA 13: Sports Medicine Clinic Diagnostic Imaging Patient Area:

Room Name	Room Code	NSF	Space Criteria
Sub-Waiting, Diagnostic Imaging	WRC03	60	Provide one if Sports Medicine Clinic Diagnostic Imaging is authorized.
Consult Room	OFDC2	120	Provide one if Sports Medicine Clinic Diagnostic Imaging is authorized
Cubicle, Patient Dressing	DR001	60	Provide two if Sports Medicine Clinic Diagnostic Imaging is authorized.
General Radiography Room	XDR01	300	Provide one if Sports Medicine Clinic Diagnostic Imaging is authorized.

Ultrasound / Portable C-Arm Room	XDUS1	180	Provide one if Sports Medicine Clinic Diagnostic Imaging is authorized.
Viewing Room, Picture Archiving and Communication System (PACS)	XVC01	120	Provide one if Sports Medicine Clinic Diagnostic Imaging is authorized.

FA 14: Sports Medicine Clinic Support Area:

Room Name	Room Code	NSF	Space Criteria
Utility Room, Clean	UCCL1	120	Provide one if Sports Medicine Clinic is authorized.
Utility Room, Soiled	USCL1	120	Provide one if Sports Medicine Clinic is authorized.
Storage, Equipment	SRSE1	120	Provide one if Sports Medicine Clinic is authorized.
Alcove, Crash Cart	RCA01	30	Provide one if Sports Medicine Clinic is authorized.

FA 15: Sports Medicine Clinic Staff and Administrative Area:

Room Name	Room Code	NSF	Space Criteria
Office, Clinic Chief	OFA04	120	Provide one for the Sports Medicine Clinic
Office, Executive Assistant	OFA04	120	Provide one for the Sports Medicine Clinic
Sub-Waiting	WRC03	60	Provide one if waiting for the Sports Medicine Staff and Administrative Clinic is authorized.
Office, NCOIC / LCPO / LPO	OFA04	120	Provide one for the Sports Medicine Clinic.
Team Collaboration Room	WRCH1	120	Minimum NSF; provide an additional one for every increment of eight Sports Medicine Treatment Cubicle, Private Treatment Room and Sports Medicine Exam Room greater than eight.
Office, Private	OFA04	120	Provide one per each Sports Medicine Clinic provider and non-provider FTE position authorized to have a private office.

Office, Shared	OFA05	120	Provide one for every increment of two Sports Medicine Clinic provider and non-provider FTE positions authorized to have a shared office.
Cubicle	OFA03	60	Provide one per each Sports Medicine Clinic provider and non-provider FTE position authorized to have a cubicle.
Conference Room	CRA01	240	Minimum NSF; provide an additional 60 NSF if the total number of FTE provider and non provider positions authorized is greater than ten.
Storage, Patient Records	MRS01	120	Provide one if Patient Records storage in the Sports Medicine Clinic is authorized
Copier	RPR01	120	Provide one for Sports Medicine Clinic.
Storage, Office Supplies	SRS01	60	Provide one for Sports Medicine Clinic.
Lounge, Staff	SL001	120	Minimum NSF, provide an additional 60 NSF for every increment of five Sports Medicine Clinic provider and non-provider FTEs working on peak shift greater than ten; maximum 360 NSF.
Lockers, Personal Property	LR001	30	Minimum NSF, provide an additional 3 NSF per each Sports Medicine Clinic FTE not assigned a private office, shared office or cubicle greater than ten.

FA 16: Sports Medicine Clinic GME Education / Training Area:

Room Name	Room Code	NSF	Space Criteria
Office, Residency Program Director	OFA04	120	Provide one if a Graduate Medical Education program for Sports Medicine Clinic is authorized.
Resident Collaboration Room	WKTM1	240	Minimum NSF; provide an additional 60 NSF per each Resident / Student FTE position authorized greater than two if a Graduate Medical Education program for Sports Medicine Clinic is authorized.

Classroom / Conference Room	CLR01	240	Provide one if the total number of Resident / Student FTE positions is greater than five if a Graduate Medical Education program for Sports Medicine Clinic is authorized.
-----------------------------	-------	-----	--