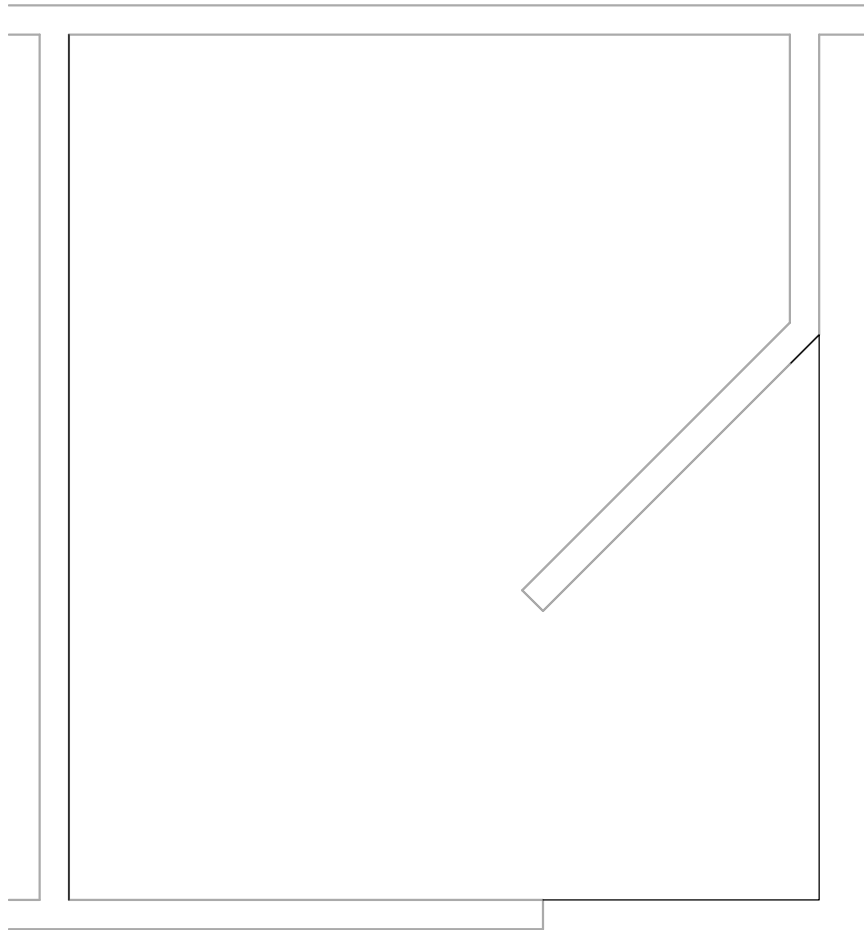
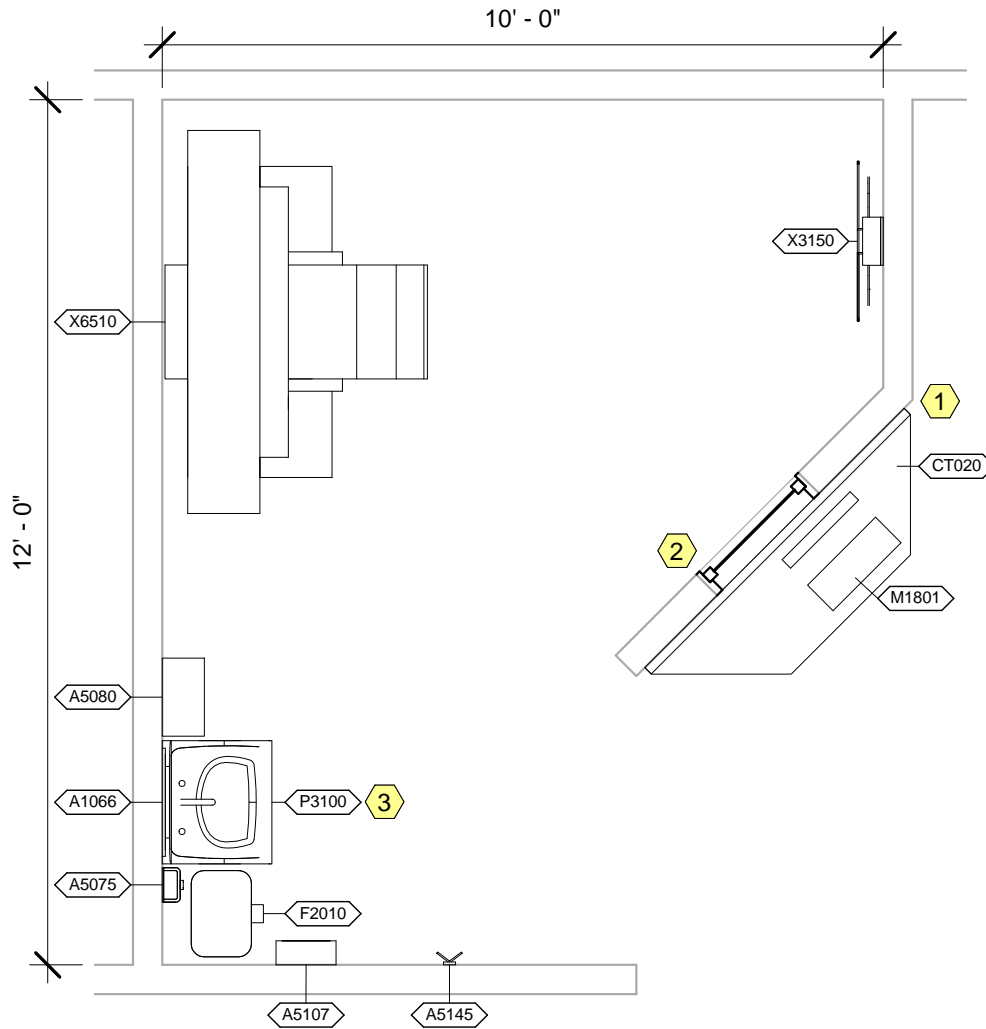


|  |                 |                   |                |
|--|-----------------|-------------------|----------------|
| <b>Room Description:</b> Dental X-Ray, Cone Beam (DNXC1) | <b>NSF:</b> 120 | <b>DNXC1</b>      |                |
| <b>Sheet Description:</b> Room/Equipment Isometric       | <b>Scale:</b>   | Sheet<br><b>1</b> | of<br><b>5</b> |



**DNXC1 - CEILING MOUNTED EQUIPMENT PLAN**

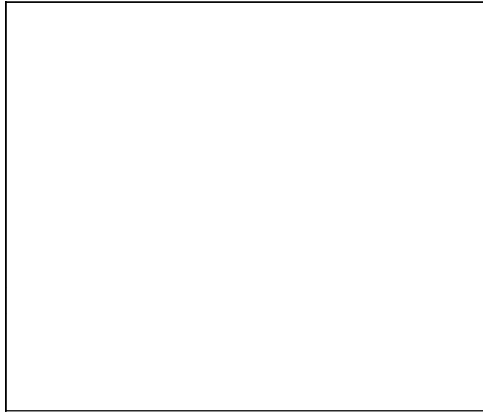
|  |                            |                   |                |
|--|----------------------------|-------------------|----------------|
| <b>Room Description:</b> Dental X-Ray, Cone Beam (DNXC1) | <b>NSF:</b> 120            | <b>DNXC1</b>      |                |
| <b>Sheet Description:</b> Ceiling Mounted Equipment Plan | <b>Scale:</b> 3/8" = 1'-0" | Sheet<br><b>2</b> | of<br><b>5</b> |



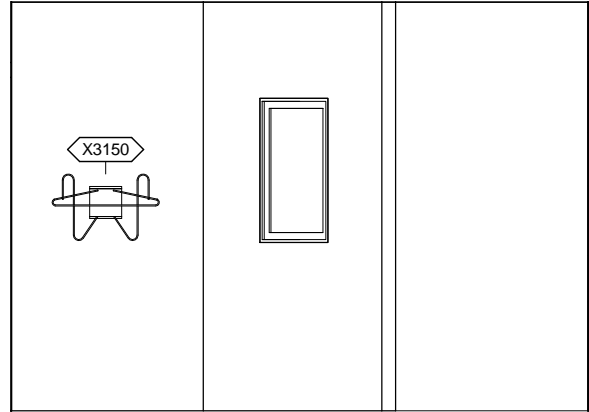
DNXC1 - NOTES

- 1 X-Ray Remote Control Unit.
- 2 Lead Glass View Window.
- 3 JSN P8710, Utility Center, shall be included in Navy projects only.

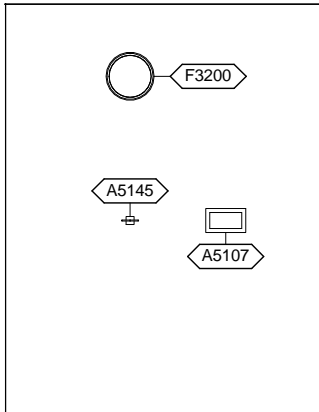
|  |                            |                   |                |
|--|----------------------------|-------------------|----------------|
| <b>Room Description:</b> Dental X-Ray, Cone Beam (DNXC1) | <b>NSF:</b> 120            | <b>DNXC1</b>      |                |
| <b>Sheet Description:</b> Equipment Plan                 | <b>Scale:</b> 3/8" = 1'-0" | Sheet<br><b>3</b> | of<br><b>5</b> |



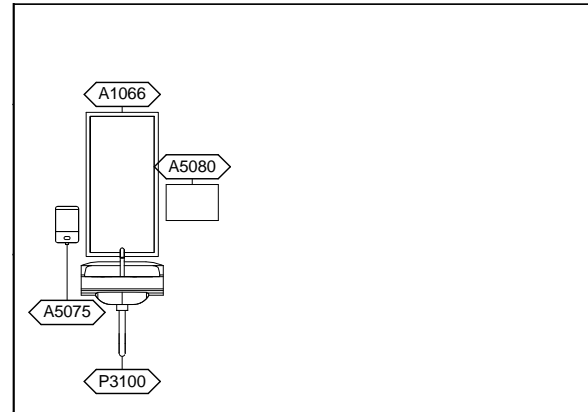
DNXC1 - NORTH ELEVATION



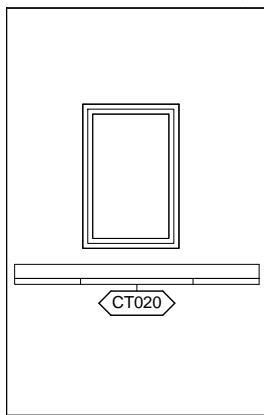
DNXC1 - EAST ELEVATION



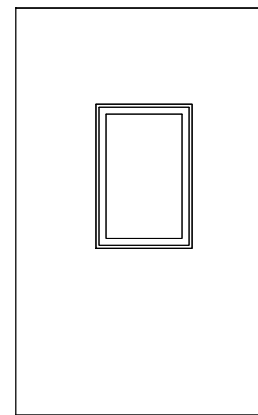
DNXC1 - SOUTH ELEVATION



DNXC1 - WEST ELEVATION



DNXC1 - ANGLED ELEVATION



DNXC1 - ANGLED (REVERSE) ELEVATION

|  |                            |                   |                |
|--|----------------------------|-------------------|----------------|
| <b>Room Description:</b> Dental X-Ray, Cone Beam (DNXC1) | <b>NSF:</b> 120            | <b>DNXC1</b>      |                |
| <b>Sheet Description:</b> Interior Room Elevations       | <b>Scale:</b> 1/4" = 1'-0" | Sheet<br><b>4</b> | of<br><b>5</b> |

DNXC1 - EQUIPMENT SCHEDULE

| JSN   | Nomenclature                                      | Qty | LF    | AR | Logistics |    |    | Utilities |   |   |   |   |   |
|-------|---|-----|-------|----|-----------|----|----|-----------|---|---|---|---|---|
|       |   |     |       |    | NA        | AF | VA | 1         | 2 | 3 | 4 | 5 | 6 |
| A1066 | Mirror, Float Glass, With SS Frame                | 1   |       | A  | A         | A  | A  | -         | - | - | - | - | - |
| A5075 | Dispenser, Soap, Disposable                       | 1   |       | C  | C         | C  | C  | -         | - | - | - | - | - |
| A5080 | Dispenser, Paper Towel, SS, Surface Mounted       | 1   |       | A  | A         | A  | A  | -         | - | - | - | - | - |
| A5107 | Dispenser, Glove, Surgical/Examination, Wall Mntd | 1   |       | C  | C         | C  | C  | -         | - | - | - | - | - |
| A5145 | Hook, Garment, Double, SS, Surface Mounted        | 1   |       | A  | A         | A  | A  | -         | - | - | - | - | - |
| CT020 | Countertop, Solid Surface, Angled                 | 1   | 4'-0" | A  | A         | A  | A  | -         | - | - | - | - | - |
| F2010 | Basket, Wastepaper, Step-On                       | 1   |       | C  | C         | C  | C  | -         | - | - | - | - | - |
| F3200 | Clock, Battery, 12" Diameter                      | 1   |       | C  | C         | C  | C  | -         | - | - | - | - | - |
| M1801 | Computer, Microprocessing, w/Flat Panel Monitor   | 1   |       | C  | C         | C  | C  | -         | A | - | - | - | - |
| P3100 | Lavatory, Vitreous China, Slab Type               | 1   |       | A  | A         | A  | A  | D         | - | - | - | - | - |
| X3150 | Rack, Apron/Gloves, Wall Mounted                  | 1   |       | A  | A         | A  | A  | -         | - | - | - | - | - |
| X6510 | Radiographic Unit, Dental, Cone Beam, 3-D Imaging | 1   |       | F  | F         | F  | F  | -         | F | - | - | - | - |

|  |                 |                   |                |
|--|-----------------|-------------------|----------------|
| <b>Room Description:</b> Dental X-Ray, Cone Beam (DNXC1) | <b>NSF:</b> 120 | <b>DNXC1</b>      |                |
| <b>Sheet Description:</b> Equipment Schedule             | <b>Scale:</b>   | Sheet<br><b>5</b> | of<br><b>5</b> |