



Room Description: Dental Treatment Room, General (DNTG1)

NSF: 130

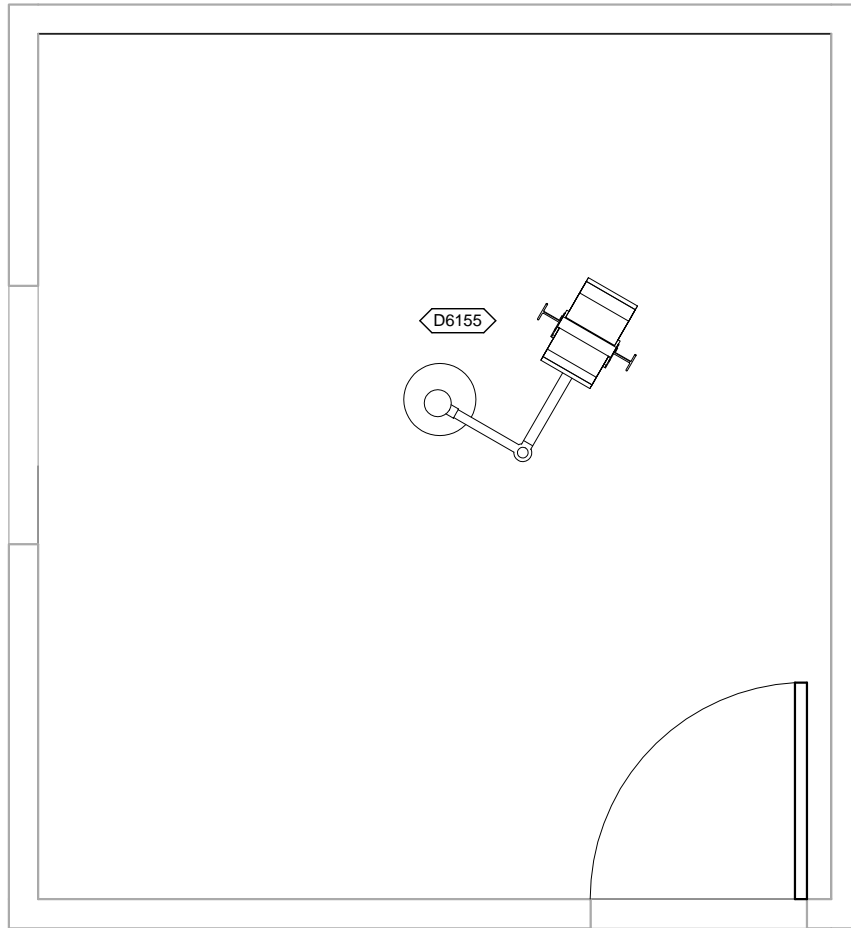
DNTG1

Sheet Description: Room/Equipment Isometric

Scale:

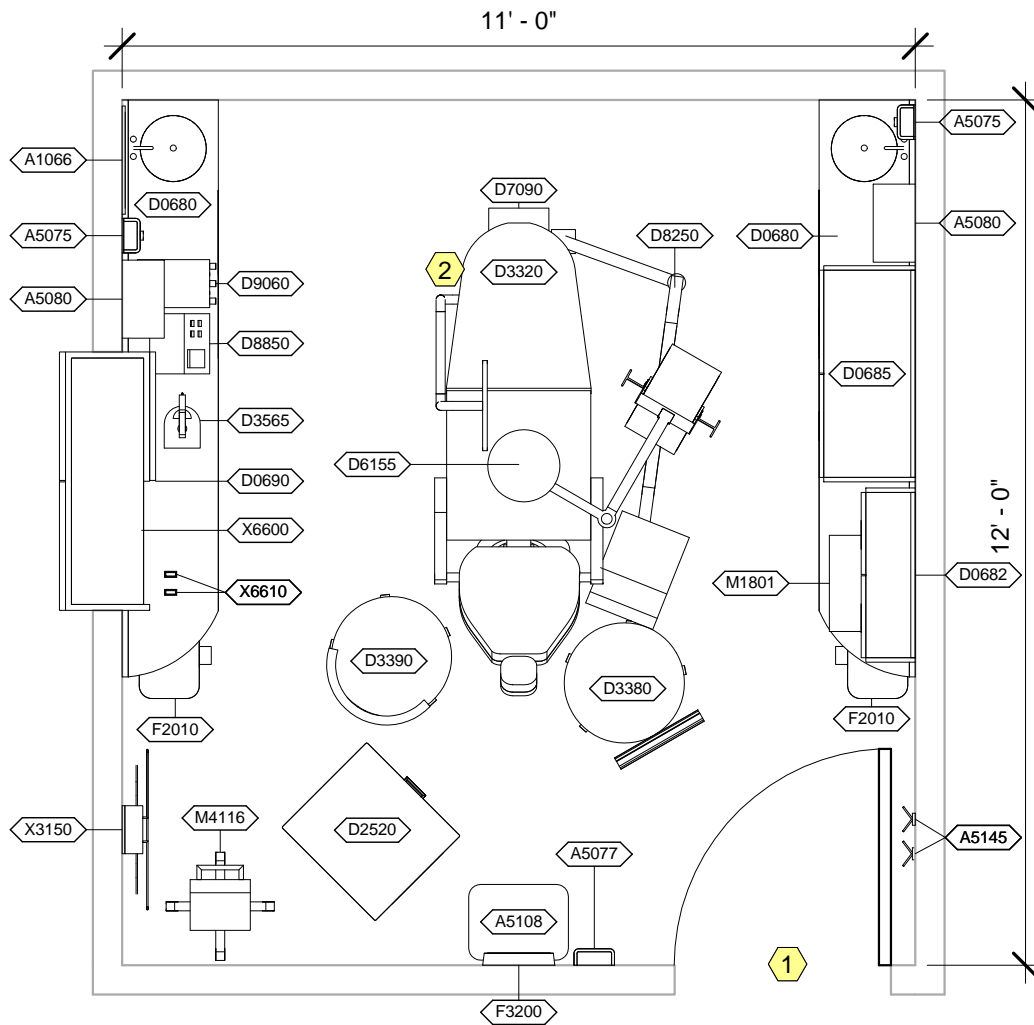
Sheet
1

of
5



DNTG1 - CEILING MOUNTED EQUIPMENT PLAN

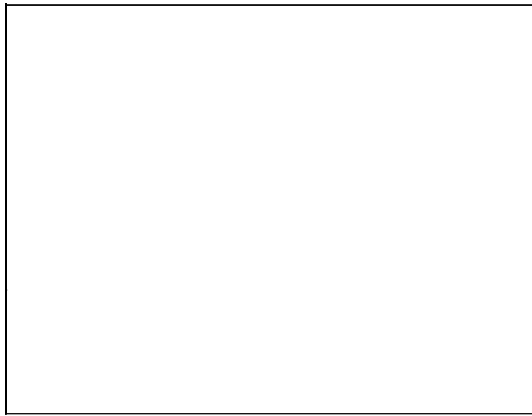
Room Description: Dental Treatment Room, General (DNTG1)	NSF: 130	DNTG1	
Sheet Description: Ceiling Mounted Equipment Plan	Scale: 3/8" = 1'-0"	Sheet 2	of 5



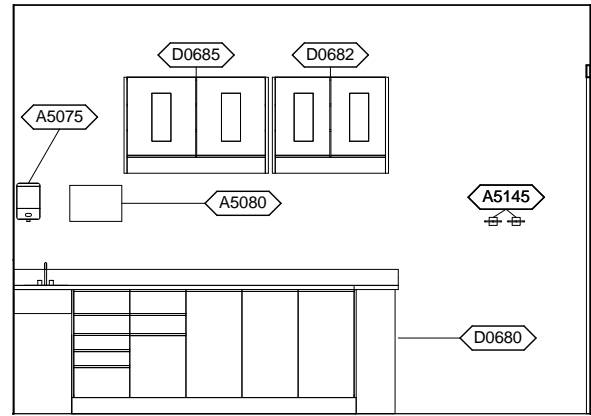
DNTG1 - NOTES

- 1 Door is optional.
- 2 JSN D3320, Chair, Operating, Dental, should include option for monitor arm.

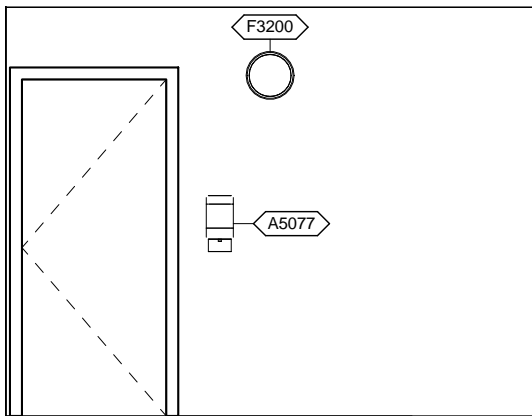
Room Description: Dental Treatment Room, General (DNTG1)	NSF: 130	DNTG1	
Sheet Description: Equipment Plan	Scale: 3/8" = 1'-0"	Sheet 3	of 5



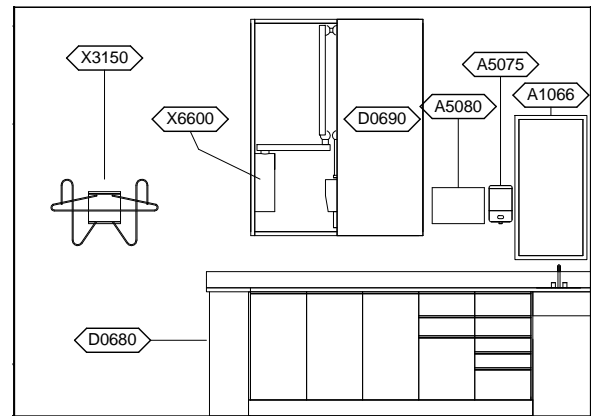
DNTG1 - NORTH ELEVATION



DNTG1 - EAST ELEVATION



DNTG1 - SOUTH ELEVATION



DNTG1 - WEST ELEVATION

Room Description: Dental Treatment Room, General (DNTG1)	NSF: 130	DNTG1	
Sheet Description: Interior Room Elevations	Scale: 1/4" = 1'-0"	Sheet 4	of 5

DNTG1 - EQUIPMENT SCHEDULE

JSN	Nomenclature	Qty	LF	Logistics				Utilities					
				AR	NA	AF	VA	1	2	3	4	5	6
A1066	Mirror, Float Glass, With SS Frame	1		A	A	A	A	-	-	-	-	-	-
A5075	Dispenser, Soap, Disposable	2		C	C	C	C	-	-	-	-	-	-
A5077	Dispenser, Hand Sanitizer, Hands free	1		C	C	C	C	-	-	-	-	-	-
A5080	Dispenser, Paper Towel, SS, Surface Mounted	2		A	A	A	A	-	-	-	-	-	-
A5108	Waste Disposal Unit, Sharps	1		C	C	C	C	-	-	-	-	-	-
A5145	Hook, Garment, Double, SS, Surface Mounted	2		A	A	A	A	-	-	-	-	-	-
D0680	Console, Accessory/Side, Dental Operator	2		A	A	A	A	D	A	-	-	-	-
D0682	Cabinet, Dispensing, Dental Operator, Wall MNTD	1		A	A	A	A	-	-	-	-	-	-
D0685	Cabinet, Storage, Dental Operator, Wall MNTD	1		A	A	A	A	-	-	-	-	-	-
D0690	Cabinet, Dental, X-Ray Storage, Wall/Cab MNTD	1		A	A	A	A	-	-	-	-	-	-
D2520	Cabinet, Mobile, Storage/Assistant, Dental	1		C	C	C	C	-	-	-	-	-	-
D3320	Chair, Operating, Dental	1		C	C	C	C	B	A	H	-	-	D
D3380	Stool, Operating, Dental, Doctor	1		C	C	C	C	-	-	-	-	-	-
D3390	Stool, Operating, Dental, Assistant	1		C	C	C	C	-	-	-	-	-	-
D3565	Resin Curing Unit, Visible Light	1		C	C	C	C	-	A	-	-	-	-
D6155	Light, Dental, Operating, Ceiling, Column	1		A	A	A	A	-	F	-	-	-	-
D7090	Utility Center, Dental, Wall or Floor Mounted	1		A	B	B	B	-	A	H	-	-	-
D8250	Delivery System, Dental Operating	1		C	C	C	C	B	B	H	-	-	-
D8850	Amalgamator, Dental	1		C	C	C	C	-	A	-	-	-	-
D9060	Prophylaxis Unit, Ultrasonic	1		C	C	C	C	J	A	D	-	-	-
F2010	Basket, Wastepaper, Step-On	2		C	C	C	C	-	-	-	-	-	-
F3200	Clock, Battery, 12" Diameter	1		C	C	C	C	-	-	-	-	-	-
M1801	Computer, Microprocessing, w/Flat Panel Monitor	1		C	C	C	C	-	A	-	-	-	-
M4116	Monitor, Vital Signs	1		C	C	C	C	-	A	-	-	-	-
X3150	Rack, Apron/Gloves, Wall Mounted	1		A	A	A	A	-	-	-	-	-	-
X6600	Radiographic Unit, Dental, Wall Mounted, 7 mA	1		F	F	F	F	-	A	-	-	-	B
X6610	Sensor, Dental Imaging System	2		C	C	C	C	-	-	-	-	-	-

Room Description: Dental Treatment Room, General (DNTG1)	NSF: 130	DNTG1	
Sheet Description: Equipment Schedule	Scale:	Sheet 5	of 5