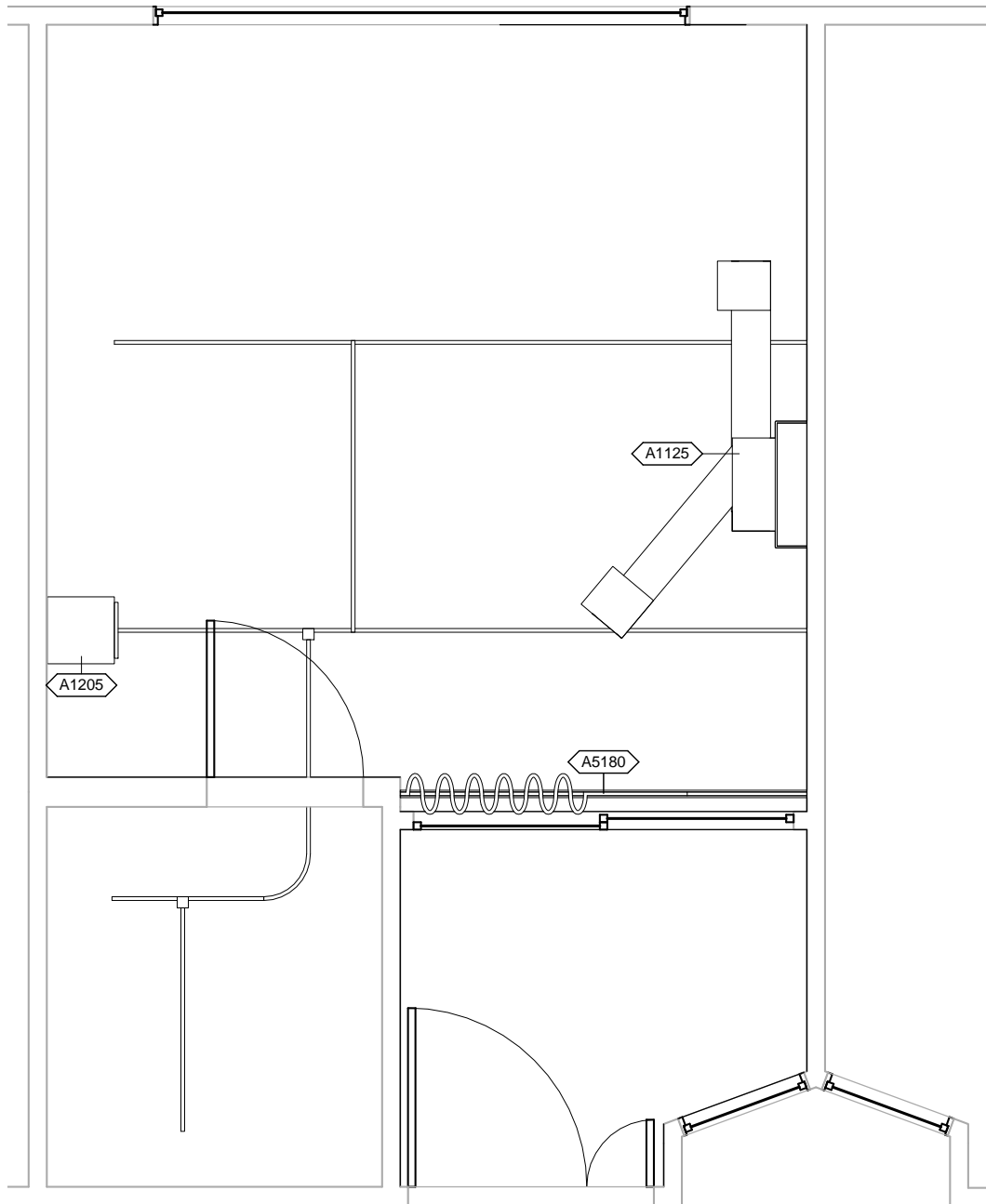


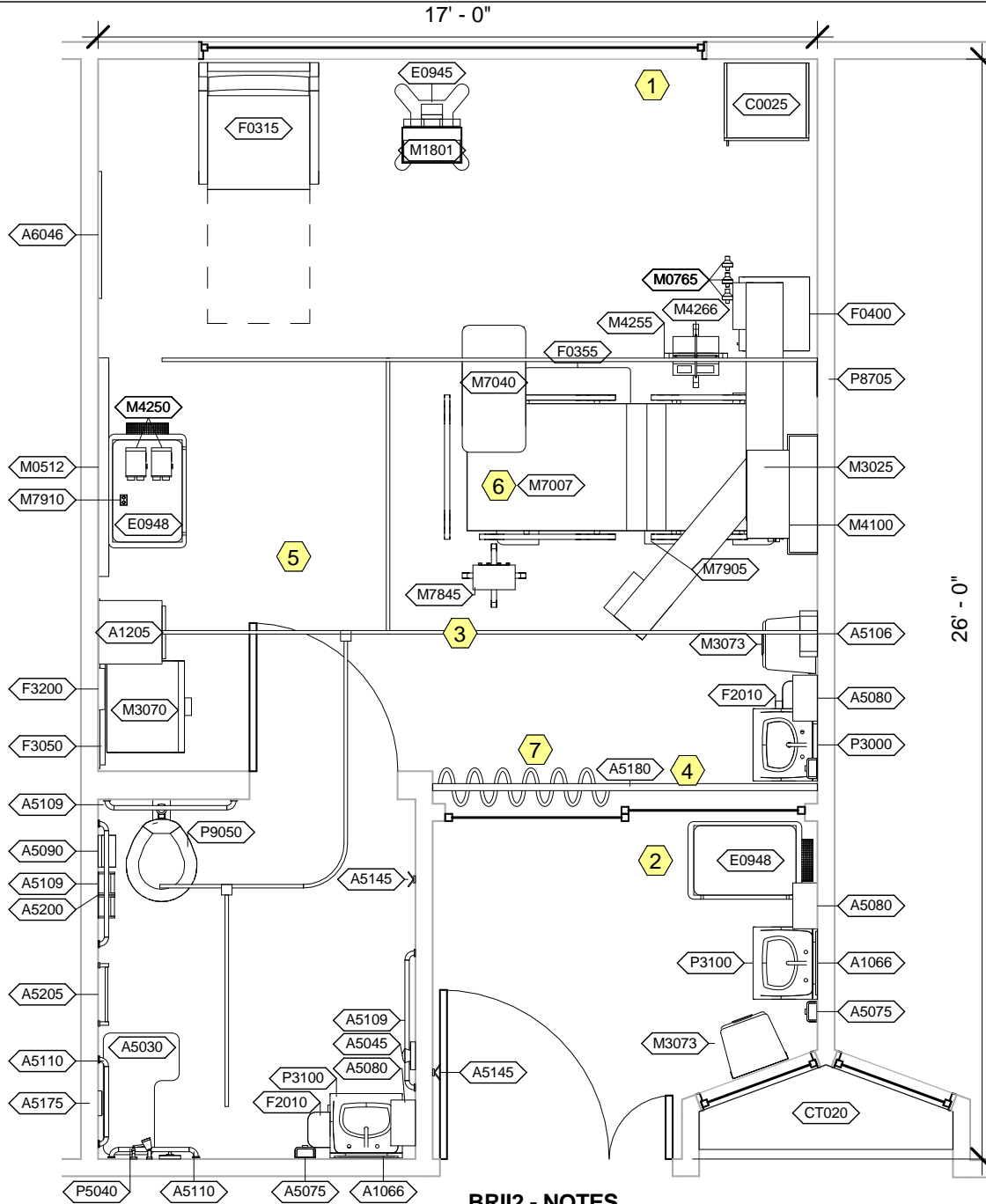


<b>Room Description:</b>	Bedroom, ICU/CCU, Protective Environment (BR1I2) Anteroom, Protective Environment (BRAR2) Toilet/Shower (TLTS2)	<b>NSF:</b> 290 70 60	<b>BR1I2/BRAR2</b>	
<b>Sheet Description:</b>	Room/Equipment Isometric	<b>Scale:</b>	Sheet <b>1</b>	of <b>9</b>



**BRII2 - CEILING MOUNTED EQUIPMENT PLAN**

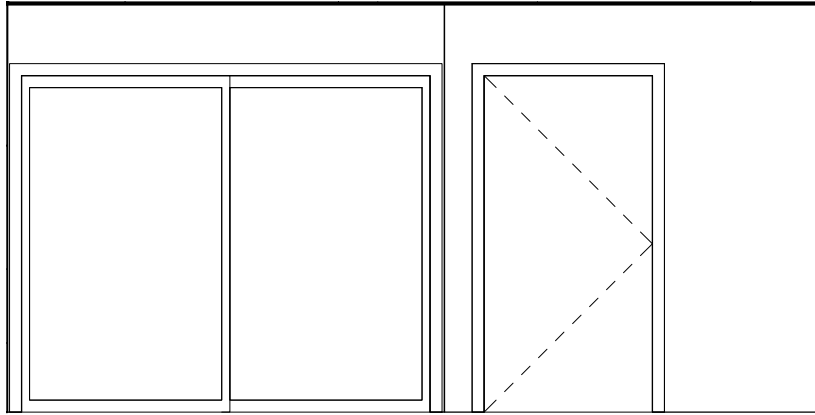
<b>Room Description:</b> Bedroom, ICU/CCU, Protective Environment (BRII2) Anteroom, Protective Environment (BRAR2) Toilet/Shower (TLTS2)	290	<b>BRII2/BRAR2</b>	
	<b>NSF:</b> 70 60		
<b>Sheet Description:</b> Ceiling Mounted Equipment Plan	<b>Scale:</b> 1/4" = 1'-0"	Sheet <b>2</b>	of <b>9</b>



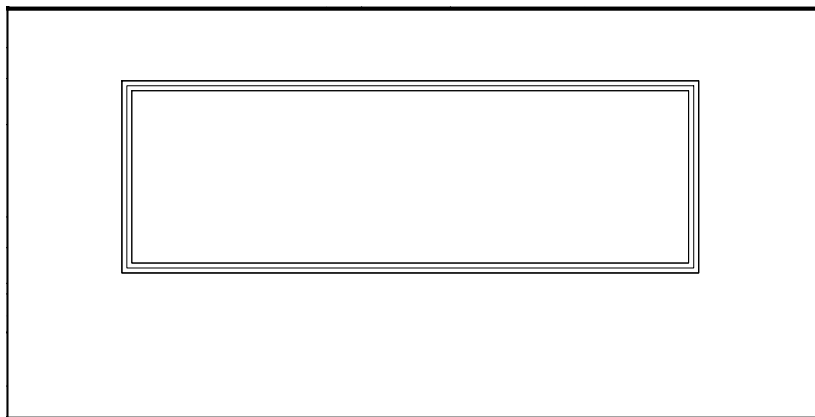
**BRII2 - NOTES**

- 1 Size windows to the maximum allowed by NF-3-400-01 (latest edition). Design: Energy Conservation & ASHRAE 90.1 (latest edition) ASHRAE Energy Standard for Buildings except Low-Rise Residential Buildings, Building Envelope Requirements Appendix B.
- 2 Emergency cart needs to be located in close proximity to ICU/CCU or CVICU patient rooms.
- 3 Mount items JSN M0750, Flowmeter, Air, Connect w/ 50 PSI Supply, JSN M0755, Flowmeter, Oxygen, Low Flow, JSN M0765, Regulator, Vacuum, JSN M4100, Sphygmomanometer, Aneroid, Headwall Mounted, JSN M4250, Pump, Syringe, Infusion, JSN4266, Pump, Volumetric, Infusion, Multiple Line, JSN M7905, Oximeter, Pulse on JSN A1125, Headwall, Suspended System
- 4 Provide wall mounted room pressure alarm.
- 5 In Pediatric ICU, change JSN M7845, Monitor, Physiological, Bedside, 4 Channel, to M7855, Infant Monitor.
- 6 In Pediatric ICU change JSN M7007, Bed, Patient, Electric, Special Care, to M7015, Crib, and provide M7020, Top.
- 7 Cubicle curtain in isolation rooms must meet facility infection control guidelines.

<b>Room Description:</b> Bedroom, ICU/CCU, Protective Environment (BRII2) Anteroom, Protective Environment (BRAR2) Toilet/Shower (TLTS2)	290	<b>BRII2/BRAR2</b>	
	<b>NSF:</b> 70 60		
<b>Sheet Description:</b> Equipment Plan	<b>Scale:</b> 1/4" = 1'-0"	Sheet <b>3</b>	of <b>9</b>

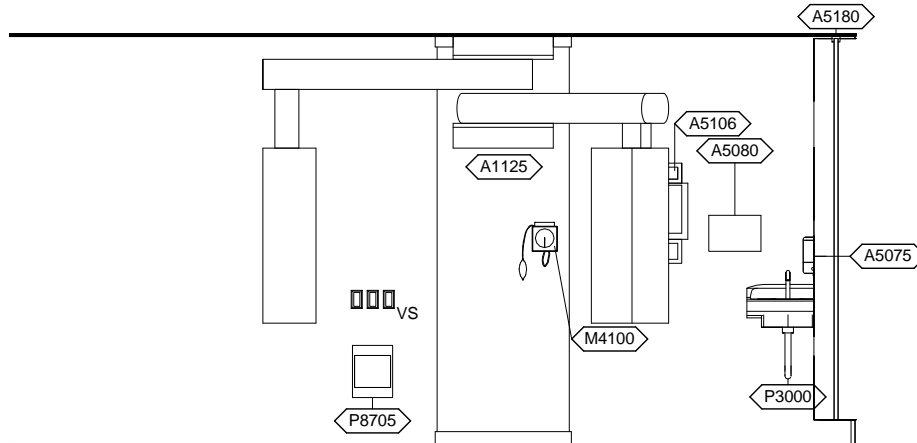


**BRII2 - SOUTH ELEVATION**

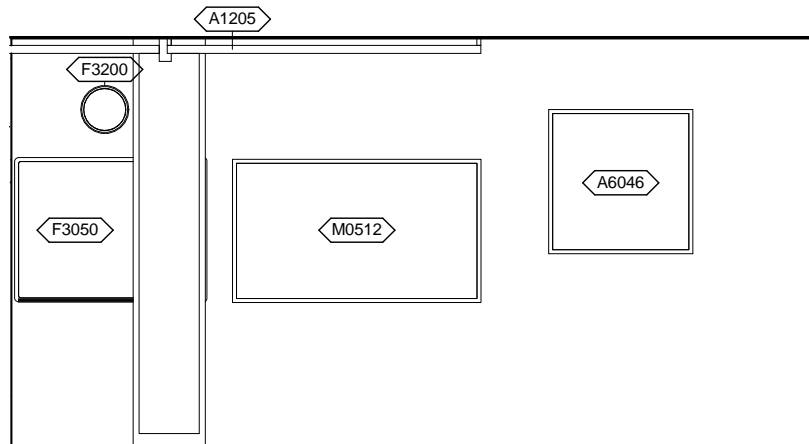


**BRII2 - NORTH ELEVATION**

<b>Room Description:</b>	Bedroom, ICU/CCU, Protective Environment (BRII2) Anteroom, Protective Environment (BRAR2) Toilet/Shower (TLTS2)	<b>NSF:</b> 290 70 60	<b>BRII2/BRAR2</b>	
<b>Sheet Description:</b>	Interior Room Elevations	<b>Scale:</b> 1/4" = 1'-0"	Sheet <b>4</b>	of <b>9</b>

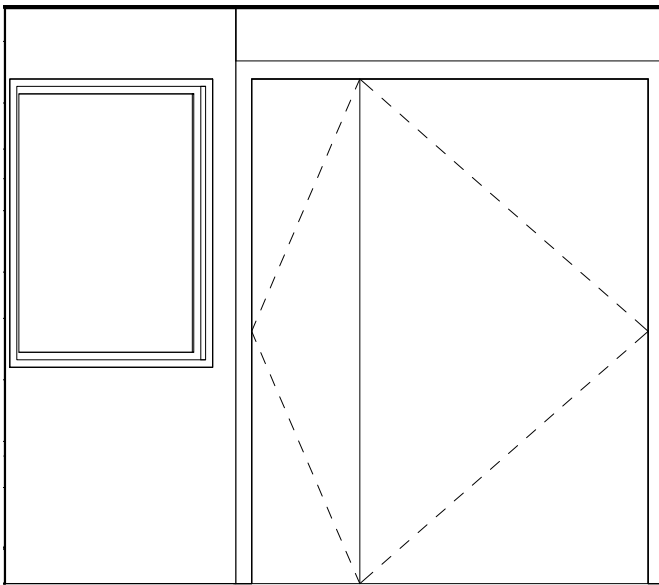


**BRII2 - EAST ELEVATION**

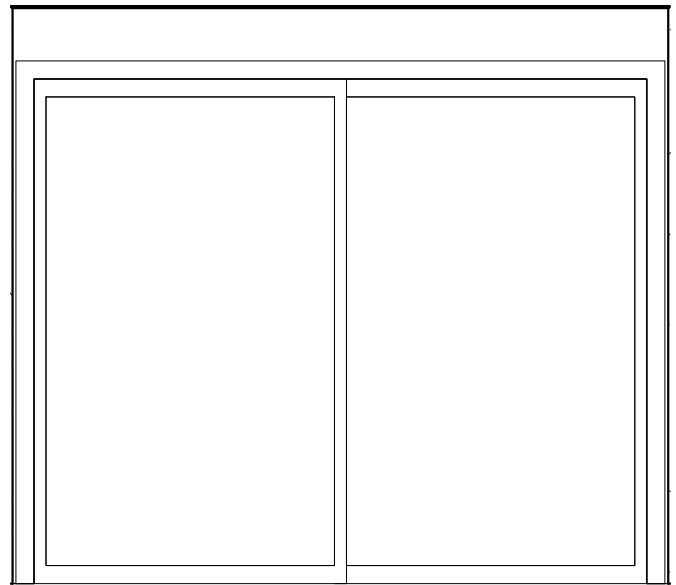


**BRII2 - WEST ELEVATION**

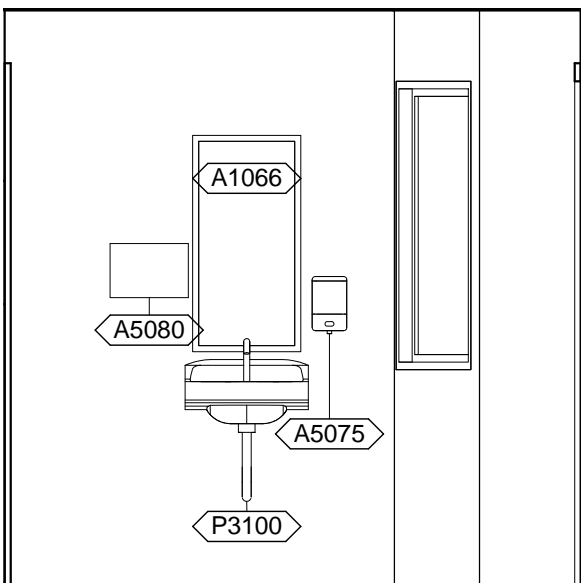
<b>Room Description:</b> Bedroom, ICU/CCU, Protective Environment (BRII2) Anteroom, Protective Environment (BRAR2) Toilet/Shower (TLTS2)	290	<b>BRII2/BRAR2</b>	
	<b>NSF:</b> 70 60		
<b>Sheet Description:</b> Interior Room Elevations	<b>Scale:</b> 1/4" = 1'-0"	Sheet <b>5</b>	of <b>9</b>



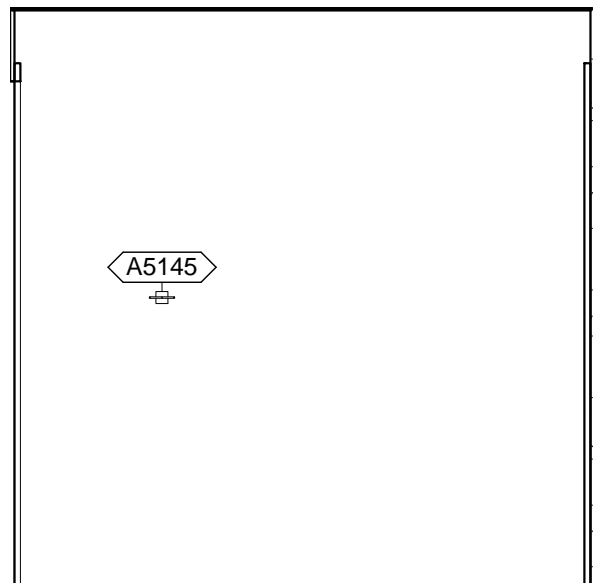
**BRAR2 - SOUTH ELEVATION**



**BRAR2 - NORTH ELEVATION**

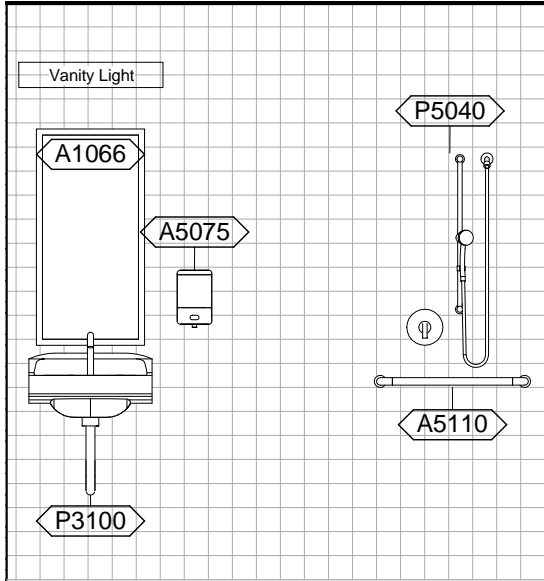


**BRAR2 - EAST ELEVATION**

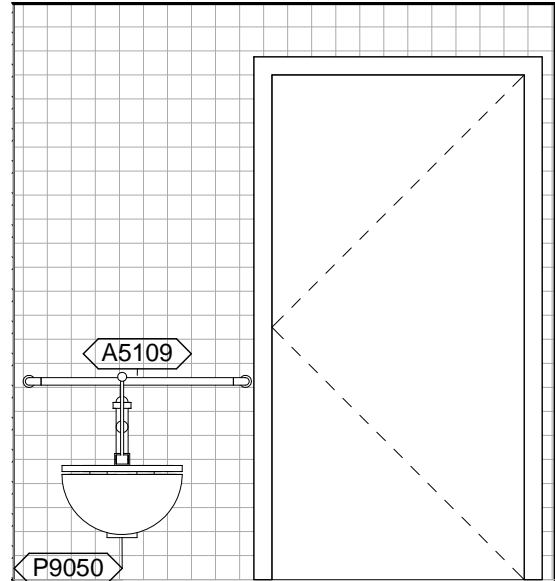


**BRAR2 - WEST ELEVATION**

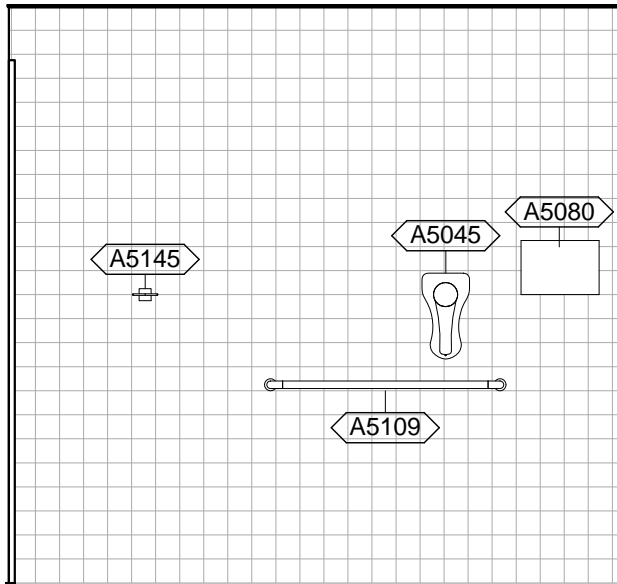
<b>Room Description:</b> Bedroom, ICU/CCU, Protective Environment (BR112) Anteroom, Protective Environment (BRAR2) Toilet/Shower (TLTS2)	290	<b>BR112/BRAR2</b>	
	<b>NSF:</b> 70 60		
<b>Sheet Description:</b> Interior Room Elevations	<b>Scale:</b> 3/8" = 1'-0"	Sheet <b>6</b>	of <b>9</b>



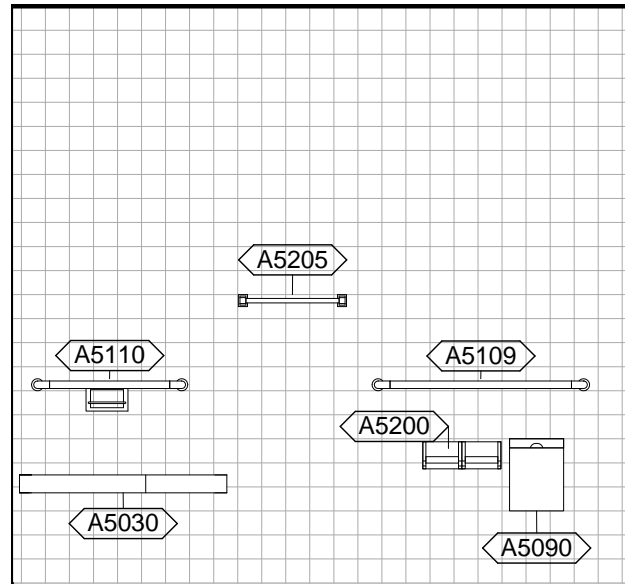
TLTS2 - SOUTH ELEVATION



TLTS2 - NORTH ELEVATION



TLTS2 - EAST ELEVATION



TLTS2 - WEST ELEVATION

<b>Room Description:</b>	Bedroom, ICU/CCU, Protective Environment (BR1I2) Anteroom, Protective Environment (BRAR2) Toilet/Shower (TLTS2)	290 <b>NSF:</b> 70 60	<b>BR1I2/BRAR2</b>	
<b>Sheet Description:</b>	Interior Room Elevations	<b>Scale:</b> 3/8" = 1'-0"	Sheet <b>7</b>	of <b>9</b>

BRII2 - EQUIPMENT SCHEDULE

JSN	Nomenclature	Qty	LF	Logistics				Utilities					
				AR	NA	AF	VA	1	2	3	4	5	6
A1125	Headwall, Suspended System	1		A	A	A	A	-	F	G	-	-	J
A1205	Lift System, Overhead, Patient Room w/Bath	1	6' - 2"	A	A	A	A	-	F	-	-	-	J
A5075	Dispenser, Soap, Disposable	1		C	C	C	C	-	-	-	-	-	-
A5080	Dispenser, Paper Towel, SS, Surface Mounted	1		A	A	A	A	-	-	-	-	-	-
A5106	Waste Disposal Unit, Sharps w/Glove Dispenser	1		C	A	C	C	-	-	-	-	-	-
A5180	Track, Cubicle, Surface Mounted, With Curtain	1		A	A	A	A	-	-	-	-	-	-
A6046	Artwork, Decorative, With Frame	1		C	C	C	C	-	-	-	-	-	-
C0025	Cabinet, Wardrobe, 1 Door, 84x24x22	1		A	A	A	A	-	-	-	-	-	-
CT020	Countertop, Solid Surface, Angled	1	4' - 0"	A	A	A	A	-	-	-	-	-	-
E0945	Mobile, Workstation	1		C	C	C	C	-	-	-	-	-	-
E0948	Cart, General Storage, Mobile, 42"H x 32"W x 22"D	1		C	C	C	C	-	-	-	-	-	-
F0315	Chair, Sleeper	1		C	C	C	C	-	-	-	-	-	-
F0355	Footstool, Straight	1		C	C	C	C	-	-	-	-	-	-
F0400	Cabinet, Bedside, Door, Drawer	1		A	A	A	A	-	-	-	-	-	-
F2010	Basket, Wastepaper, Step-On	1		C	C	C	C	-	-	-	-	-	-
F3050	Whiteboard, Dry Erase	1		A	A	A	A	-	-	-	-	-	-
F3200	Clock, Battery, 12" Diameter	1		C	C	C	C	-	-	-	-	-	-
M0512	Television, HDTV, Large Screen, 60"	1		C	C	C	C	-	A	-	-	-	-
M0765	Regulator, Vacuum	3		C	C	C	C	-	-	B	-	-	-
M1801	Computer, Microprocessing, w/Flat Panel Monitor	1		C	C	C	C	-	A	-	-	-	-
M3025	Mattress, Pressure Reduction	1		C	C	C	C	-	A	-	-	-	-
M3070	Hamper, Linen, Mobile, w/Lid	1		C	C	C	C	-	-	-	-	-	-
M3073	Basket, Infectious Waste, Step-On	1		C	C	C	C	-	-	-	-	-	-
M4100	Sphygmomanometer, Aneroid, Wall Mounted	1		C	C	C	C	-	-	-	-	-	-
M4250	Pump, Syringe, Infusion	2		C	C	C	C	-	A	-	-	-	-
M4255	Stand, IV, Adjustable	1		C	C	C	C	-	-	-	-	-	-
M4266	Pump, Volumetric, Infusion, Multiple Line	1		C	C	C	C	-	A	-	-	-	-
M7007	Bed, Patient, Electric, Special Care	1		C	C	C	C	-	A	-	-	-	-
M7040	Table, Overbed	1		C	C	C	C	-	-	-	-	-	-
M7845	Monitor, Physiological, Bedside, 4 Channel	1		C	C	C	C	-	A	-	-	-	D
M7905	Oximeter, Pulse	1		C	C	C	C	-	A	-	-	-	-
M7910	Thermometer, Electronic	1		C	C	C	C	-	-	-	-	-	-
P3000	Lavatory, Vitreous China, Straight Back	1		A	A	A	A	D	-	-	-	-	-
P8705	Dialysis Box, Recessed, Single Valve	1		A	A	A	A	B	-	-	-	-	-

<b>Room Description:</b> Bedroom, ICU/CCU, Protective Environment (BRII2) Anteroom, Protective Environment (BRAR2) Toilet/Shower (TLTS2)	290	<b>BRII2/BRAR2</b>	
	<b>NSF:</b> 70 60		
<b>Sheet Description:</b> Equipment Schedule	<b>Scale:</b>	Sheet <b>8</b>	of <b>9</b>



BRAR2 - EQUIPMENT SCHEDULE

JSN	Nomenclature	Qty	LF	Logistics				Utilities					
				AR	NA	AF	VA	1	2	3	4	5	6
A1066	Mirror, Float Glass, With SS Frame	1		A	A	A	A	-	-	-	-	-	-
A5075	Dispenser, Soap, Disposable	1		C	C	C	C	-	-	-	-	-	-
A5080	Dispenser, Paper Towel, SS, Surface Mounted	1		A	A	A	A	-	-	-	-	-	-
A5145	Hook, Garment, Double, SS, Surface Mounted	1		A	A	A	A	-	-	-	-	-	-
E0948	Cart, General Storage, Mobile, 42"H x 32"W x 22"D	1		C	C	C	C	-	-	-	-	-	-
M3073	Basket, Infectious Waste, Step-On	1		C	C	C	C	-	-	-	-	-	-
P3100	Lavatory, Vitreous China, Slab Type	1		A	A	A	A	D	-	-	-	-	-

TLTS2 - EQUIPMENT SCHEDULE

JSN	Nomenclature	Qty	LF	Logistics				Utilities					
				AR	NA	AF	VA	1	2	3	4	5	6
A1066	Mirror, Float Glass, With SS Frame	1		A	A	A	A	-	-	-	-	-	-
A5030	Bench, Stall, Shower, Built In	1		A	A	A	A	-	-	-	-	-	-
A5045	Hair Dryer, Wall Mounted, Inpatient	1		C	C	C	C	-	-	-	-	-	-
A5075	Dispenser, Soap, Disposable	1		C	C	C	C	-	-	-	-	-	-
A5080	Dispenser, Paper Towel, SS, Surface Mounted	1		A	A	A	A	-	-	-	-	-	-
A5090	Disposal, Sanitary Napkin, SS, Surface Mounted	1		A	A	A	A	-	-	-	-	-	-
A5109	Grab Bar, 1-1/4" Dia., SS, 2 Wall, W/C Accessible	3		A	A	A	A	-	-	-	-	-	-
A5110	Grab Bar, 1-1/4" Dia., SS, 2 Wall, Shower Use	2		A	A	A	A	-	-	-	-	-	-
A5145	Hook, Garment, Double, SS, Surface Mounted	1		A	A	A	A	-	-	-	-	-	-
A5175	Soap Dish, With Bar, SS, Recessed	1		A	A	A	A	-	-	-	-	-	-
A5200	Dispenser, Toilet Tissue, SS, 2-Roll, Surface Mntd	1		A	A	A	A	-	-	-	-	-	-
A5205	Bar, Towel, 1" Diameter, SS, Surface Mounted	1		A	A	A	A	-	-	-	-	-	-
F2010	Basket, Wastepaper, Step-On	1		C	C	C	C	-	-	-	-	-	-
P1150	Valve, Rinse, Bedpan, With Disinfectant Injector	1		A	A	A	A	J	-	-	-	-	-
P3100	Lavatory, Vitreous China, Slab Type	1		A	A	A	A	D	-	-	-	-	-
P5040	Shower, Single, Hand-Held	1		A	A	A	A	D	-	-	-	-	-
P9050	Toilet, Wall Hung, Siphon Jet	1		A	A	A	A	B	-	-	-	-	-

<b>Room</b> Bedroom, ICU/CCU, Protective Environment (BR1I2) <b>Description:</b> Anteroom, Protective Environment (BRAR2) Toilet/Shower (TLTS2)	290	<b>BR1I2/BRAR2</b>
	<b>NSF:</b> 70 60	
<b>Sheet</b> <b>Description:</b> Equipment Schedule	<b>Scale:</b>	Sheet <b>9</b> of <b>9</b>