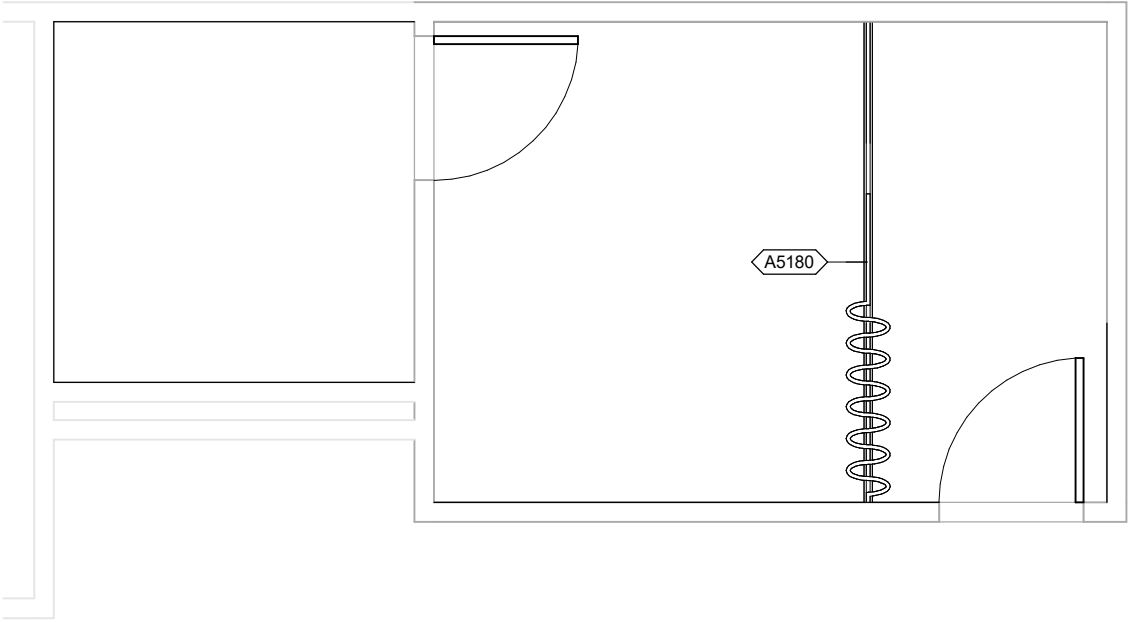
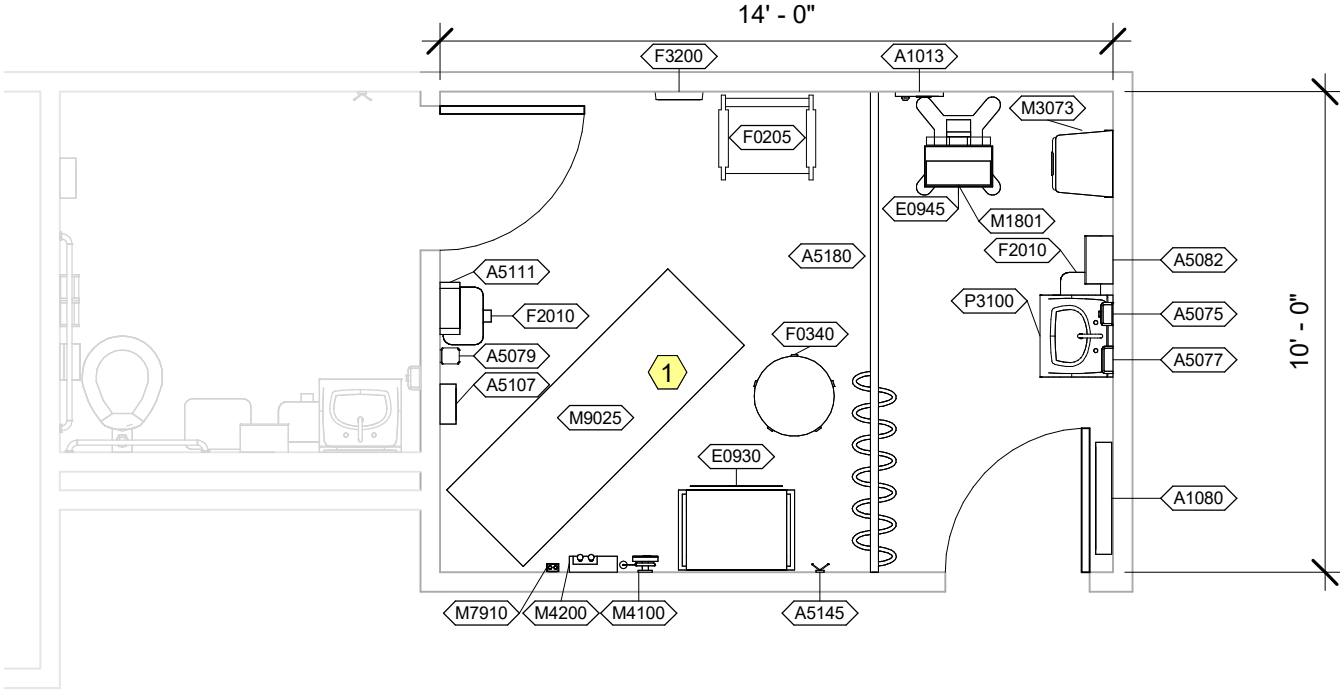


| | | | |
|---------------------------------------------------------------------|-----------------|-------------------|----------------|
| Room Description: Exam, Airborne Infection Isolation (EXRG6) | NSF: 140 | EXRG6 | |
| Sheet Description: Room/Equipment Isometric | Scale: | Sheet 1 | of 5 |



EXRG6 - CEILING MOUNTED EQUIPMENT PLAN

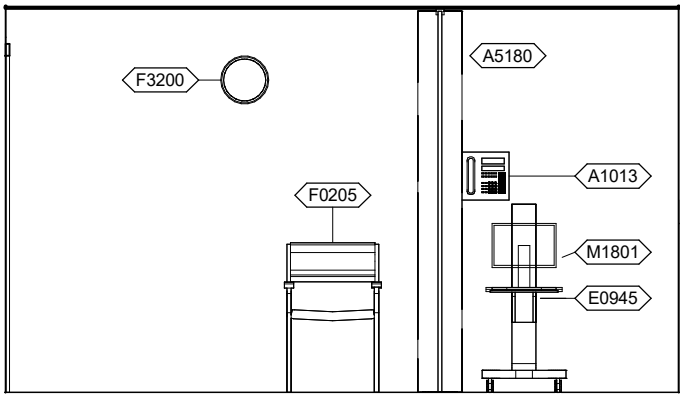
| | | | |
|---------------------------------------------------------------------|----------------------------|-------------------|----------------|
| Room Description: Exam, Airborne Infection Isolation (EXRG6) | NSF: 140 | EXRG6 | |
| Sheet Description: Ceiling Mounted Equipment Plan | Scale: 1/4" = 1'-0" | Sheet 2 | of 5 |



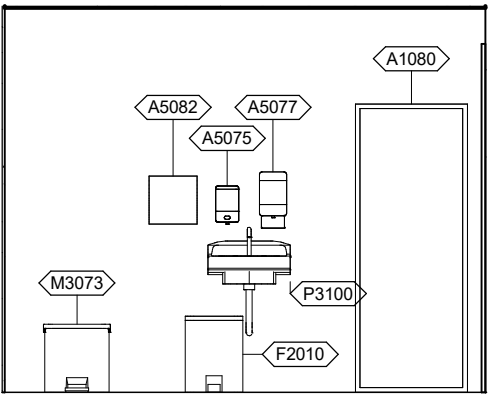
EXRG6- NOTES

1 In Pediatrics use, JSN M9020, Table Exam Peds with Scale.

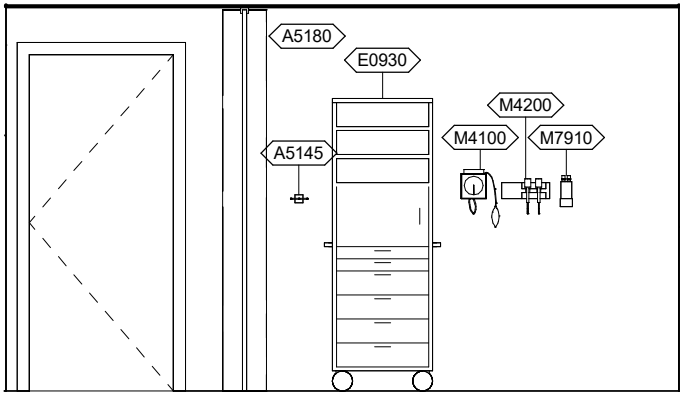
| | | | |
|---------------------------------------------------------------------|----------------------------|--------------|---------|
| Room Description: Exam, Airborne Infection Isolation (EXRG6) | NSF: 140 | EXRG6 | |
| Sheet Description: Equipment Plan | Scale: 1/4" = 1'-0" | Sheet 3 | of 5 |



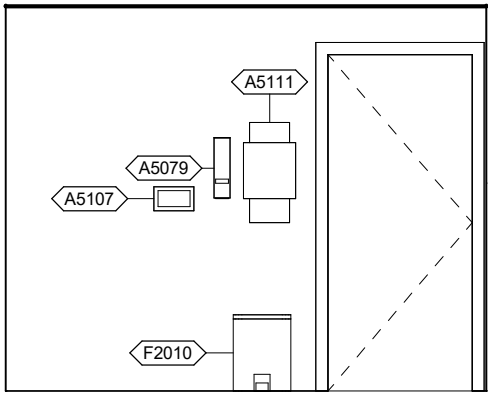
EXRG6 - NORTH ELEVATION



EXRG6 - EAST ELEVATION



EXRG6 - SOUTH ELEVATION



EXRG6 - WEST ELEVATION

| | | | |
|---------------------------------------------------------------------|----------------------------|-------------------|----------------|
| Room Description: Exam, Airborne Infection Isolation (EXRG6) | NSF: 140 | EXRG6 | |
| Sheet Description: Interior Room Elevations | Scale: 1/4" = 1'-0" | Sheet 4 | of 5 |

EXRG6 - EQUIPMENT SCHEDULE

| JSN | Nomenclature | Qty | LF | Funding Category | LOGCAT |
|-------|---------------------------------------------------|-----|--------|------------------|--------|
| A1013 | Telephone, Wall Mounted, Multiple Line | 1 | | PP | C |
| A1080 | Mirror, Posture, Wall Mounted | 1 | | RPIE | A |
| A5075 | Dispenser, Soap, Disposable | 1 | | PP | C |
| A5077 | Dispenser, Hand Sanitizer, Hands-Free | 1 | | PP | C |
| A5079 | Dispenser, Disinfectant Wipes, Wall-Mount | 1 | | PP | C |
| A5082 | Dispenser, Paper Towel, Sensor, Hands Free | 1 | | PP | C |
| A5107 | Dispenser, Glove, Surgical/Examination, Wall Mntd | 1 | | PP | C |
| A5111 | Waste Disposal Unit, Sharps Wall Mount | 1 | | PP | C |
| A5145 | Hook, Garment, Double, SS, Surface Mounted | 1 | | RPIE | A |
| A5180 | Track, Cubicle, Surface Mounted, With Curtain | 1 | 10'-0" | RPIE | A |
| E0930 | Locker, Supply, 6 Drawers, Mobile, 29"W x 20"D | 1 | | PP | C |
| E0945 | Cart, Computer, Mobile | 1 | | PP | C |
| F0205 | Chair, Side With Arms | 1 | | PP | C |
| F0340 | Stool, Self Adjusting | 1 | | PP | C |
| F2010 | Basket, Wastepaper, Step-On | 2 | | PP | C |
| F3200 | Clock, Battery, 12" Diameter | 1 | | PP | C |
| M1801 | Computer, Microprocessing, w/Flat Panel Monitor | 1 | | PP | C |
| M3073 | Container, Biohazard Waste, Step-on, Fire Safe | 1 | | PP | C |
| M4100 | Sphygmomanometer, Aneroid, Wall Mounted | 1 | | PP | C |
| M4200 | Otoscope/Ophthalmoscope, Wall Mounted | 1 | | PP | C |
| M7910 | Thermometer, Electronic | 1 | | PP | C |
| M9025 | Table, Examination/Treatment, With Cabinet | 1 | | PP | C |
| P3100 | Lavatory, Vitreous China, Slab Type | 1 | | RPIE | A |

Room Exam, Airborne Infection Isolation (EXRG6)
Description:

NSF: 140

EXRG6

Sheet
Description: Equipment Schedule

Scale:

Sheet
5
 of
5