

KEY NOTES

2. MOUNT A5145, HOOK, AT 1372 [4'-6"] AFF. PROVIDE 2-A5145'S FOR NAVY PROJECTS ONLY. MOUNT 1-A5145 AT 1372 [4'-6"] AFF AND 1-A5145 AT 1524 [5'-0"] AFF.
5. GENERATOR FOR X5430, MAMMOGRAPHIC RADIOGRAPHIC UNIT.
6. CONTROL CONSOLE AND SHIELD FOR X5430, MAMMOGRAPHIC RADIOGRAPHIC UNIT.
7. EDM TOWER FOR X5430, MAMMOGRAPHIC RADIOGRAPHIC UNIT.
9. COORDINATE LOCATION OF M1620, PATIENT CHART HOLDER, AND ROOM SIGNAGE.
10. REVERSE THE LOCATIONS OF P3100, LAVATORY, AND ACCESSORIES AND E0930, SUPPLY LOCKER, FOR NAVY PROJECTS ONLY.
11. P3200, UTR ELECTRONIC LAVATORY, MAY BE USED INSTEAD OF P3100, LAVATORY. FOR THE P3200 PROVIDE EITHER BATTERY POWER OR HARD WIRED CONNECTION.

XRAY DIAGNOSTIC,
MAMMOGRAPHY (XDMO1)

RADIOLOGY/NUCLEAR MEDICINE

FLOOR/EQUIPMENT PLAN

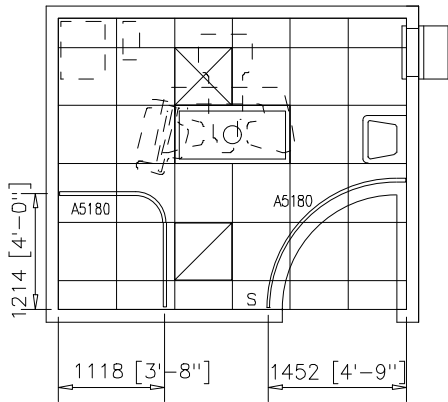
11.15 NSM (120 NSF)

DATE: 07/12/2001

0 1000 2000



1:50 SCALE (MILLIMETERS)



XRAY DIAGNOSTIC,
MAMMOGRAPHY (XDMO1)

RADIOLOGY/NUCLEAR MEDICINE

CEILING PLAN

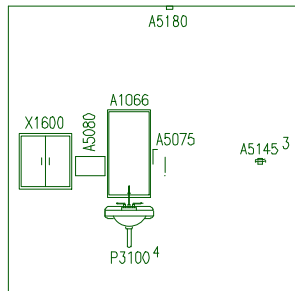
11.15 NSM (120 NSF)

DATE: 07/12/2001

0 1000 2000



1:50 SCALE (MILLIMETERS)



EAST (MAMMOGRAPHY)

KEY NOTES

3. MOUNT A5145, HOOK, AT 1372 [4'-6"] AFF. PROVIDE 2-A5145'S FOR NAVY PROJECTS ONLY. MOUNT 1-A5145 AT 1372 [4'-6"] AFF AND 1-A5145 AT 1524 [5'-0"] AFF.
4. P3200, UTR ELECTRONIC LAVATORY, MAY BE USED INSTEAD OF P3100, LAVATORY. FOR THE P3200 PROVIDE EITHER BATTERY POWER OR HARD WIRED CONNECTION.

General Notes:

1. For typical equipment mounting heights see "TYPICAL EQUIPMENT MOUNTING HEIGHTS" drawing.
2. MIL-STD-1691 data can only be accessed from the Equipment Plan.

XRAY DIAGNOSTIC,
MAMMOGRAPHY (XDMO1)

RADIOLOGY/NUCLEAR MEDICINE

ELEVATIONS

11.15 NSM (120 NSF)

0 1000 2000



DATE: 07/12/2001

1:50 SCALE (MILLIMETERS)

Project Rooms (User Contents Only)

As of 10/04/2005

Page 1

Room Code: XDM01 Room Qty: Room Area: Room Description: XRAY DIAGNOSTIC MAMMOGRAPHY

JSN	NOMENCLATURE	Qty	UNIT	LOG	Ut1	Ut1	Ut1	Ut1	Ut1	Ut1
			ISSUE	CAT	1	2	3	4	5	6
Equipment per Room:										
X1600	Cabinet, Transfer, Cassette, 4 Door, 2 Compartme	1	EA	A
A1066	Mirror, Float Glass, With SS Frame, 36X18	1	EA	A
A5075	Dispenser, Soap, Disposable	1	EA	C
A5080	Dispenser, Paper Towel, SS, Surface Mounted	1	EA	A
A5106	Waste Disposal Unit, Sharps w/Glove Dispenser	1	EA	C
A5145	Hook, Garment, Double, SS, Surface Mounted	2	EA	A
A5180	Track, Cubicle, Surface Mounted, With Curtain	2	FT	A
E0930	Locker, Supply, 6 Drawers, Mobile, 29"W x 20"D	1	EA	C
F0205	Chair, Side With Arms	1	EA	C
F0230	Chair, Drafting, Rotary	1	EA	C
F2000	Basket, Wastepaper, Round, Metal, 18 H x 16 Dia.	1	EA	C
F3200	Clock, Battery, 12" Diameter	1	EA	C
M1620	Holder, Chart, Patient, Wall or Door Mounted	1	EA	A
P3100	Lavatory, Vitreous China, Slab Type	1	EA	A	D
X3150	Rack, Apron/Gloves, Wall Mounted	1	EA	A
X5430	Radiographic Unit, Mammographic	1	EA	F	.	C	.	.	.	B
=====										
GRAND TOTAL		18								