

TRGM1 - INTERIOR DESIGN

Floor Finish		Wall Finish		Ceiling Finish		Room Height	Room Noise		
Preferred	Alternate	Preferred	Alternate	Preferred	Alternate	ft - in	Min NC	Max NC	SC
SV	VT	GLG	GPT	AT2	GLG	9' - 0"	30	35	40

TRGM1 - DOOR SCHEDULE

Mark	Type	Count	Height	Width	Notes
			ft - in	ft - in	
C	Single-Flush	1	7' - 0"	4' - 0"	

Room Description: Treatment Room, General, 1 Bed

NSF: 180

TRGM1

Plate Description: Room/Equipment Isometric

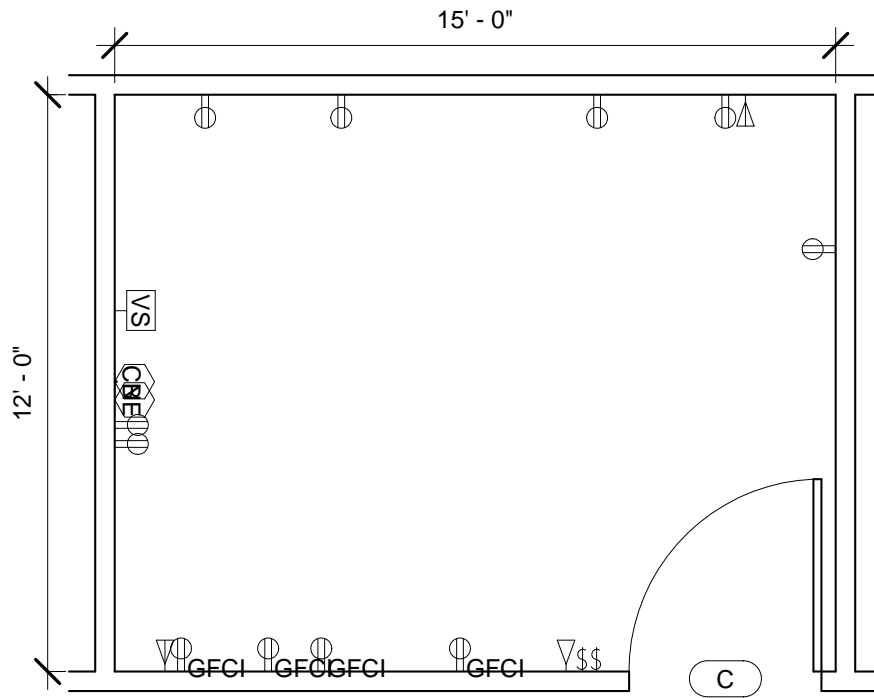
Scale:

Sheet

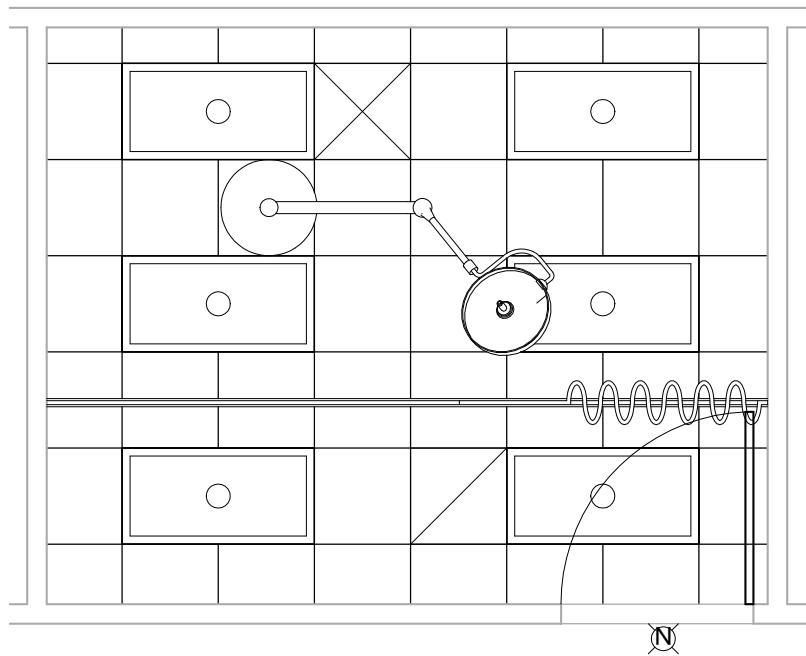
1

of

5

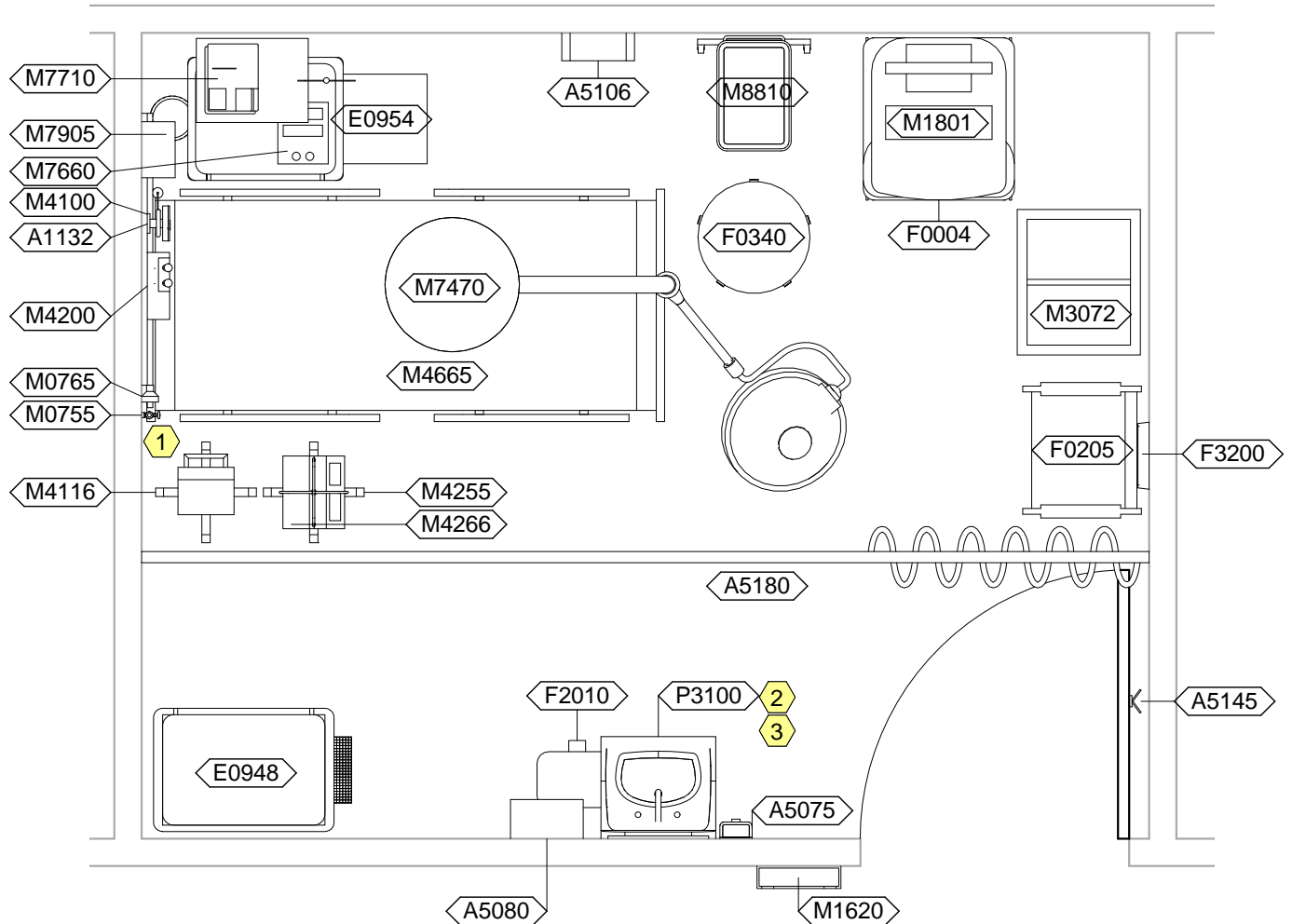


TRGM1 - FLOOR PLAN



TRGM1 - CEILING PLAN

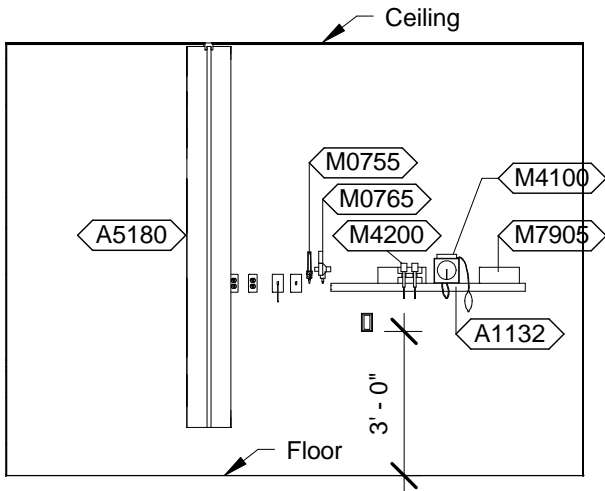
Room Description: Treatment Room, General, 1 Bed	NSF: 180	TRGM1	
Plate Description: Floor & Ceiling Plans	Scale: 1/4" = 1'-0"	Sheet 2	of 5



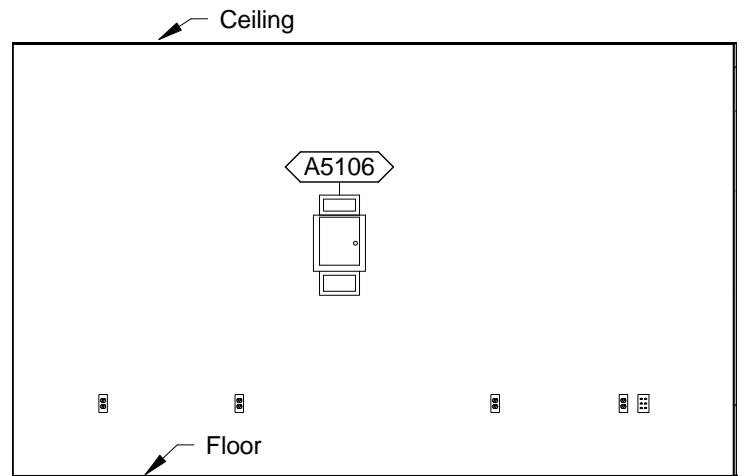
TRGM1 - NOTES

- 1 Piped gases and emergency power only required in hospital occupancy.
- 2 JSN P8710, Utility Center, shall be included in Navy projects only.
- 3 JSN P3200, Lavatory Electronic, may be used instead of JSN P3100, Lavatory. For the JSN P3200, Lavatory Electronic, provide either battery power or hard wired connection.

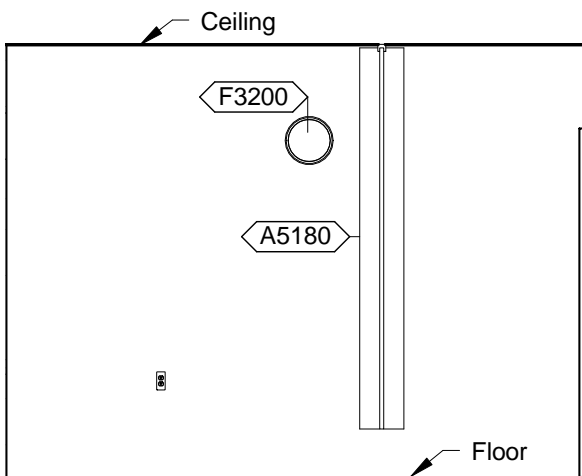
Room Description: Treatment Room, General, 1 Bed	NSF: 180	TRGM1	
Plate Description: Equipment Plan	Scale: 3/8" = 1'-0"	Sheet 3	of 5



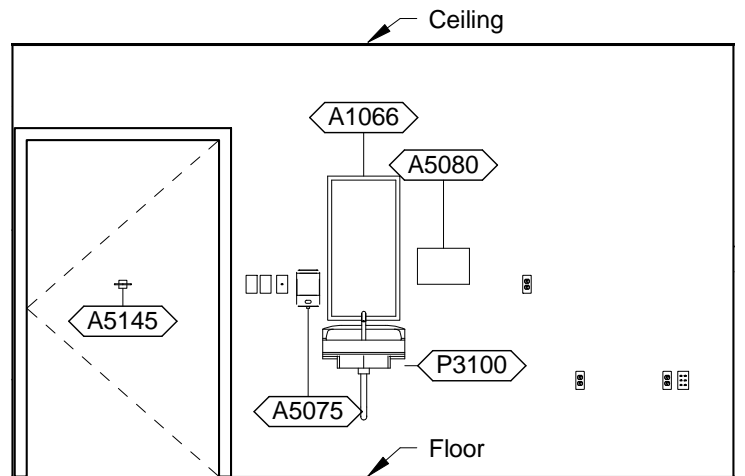
TRGM1 - PLAN WEST



TRGM1 - PLAN NORTH



TRGM1 - PLAN EAST



TRGM1 - PLAN SOUTH

NOTES:

1. Code Blue is only provided in hospital occupancy.

Room Description: Treatment Room, General, 1 Bed	NSF: 180	TRGM1	
Plate Description: Interior Room Elevations	Scale: 1/4" = 1'-0"	Sheet 4	of 5

TRGM1 - EQUIPMENT SCHEDULE

JSN	Nomenclature	Qty	Logistics				Utilities					
			AR	NA	AF	VA	1	2	3	4	5	6
A1066	Mirror, Float Glass, With SS Frame	1	A	A	A	A	-	-	-	-	-	-
A1132	Rail, Accessory Mounting, 48"	1	A	A	A	A	-	-	-	-	-	-
A5075	Dispenser, Soap, Disposable	1	C	C	C	C	-	-	-	-	-	-
A5080	Dispenser, Paper Towel, SS, Surface Mounted	1	A	A	A	A	-	-	-	-	-	-
A5106	Waste Disposal Unit, Sharps w/Glove Dispenser	1	C	A	C	C	-	-	-	-	-	-
A5145	Hook, Garment, Double, SS, Surface Mounted	1	A	A	A	A	-	-	-	-	-	-
A5180	Track, Cubicle, Surface Mounted, With Curtain	1	A	A	A	A	-	-	-	-	-	-
E0948	Cart, General Storage, Mobile, 42"H x 32"W x 22"D	1	C	C	C	C	-	-	-	-	-	-
E0954	Cart, Emergency, Mobile, 66"H x 52"W x 22"D	1	C	C	C	C	-	-	-	-	-	-
F0004	Mobile, Workstation	1	C	C	C	C	-	-	-	-	-	-
F0205	Chair, Side With Arms	1	C	C	C	C	-	-	-	-	-	-
F0340	Stool, Self Adjusting	1	C	C	C	C	-	-	-	-	-	-
F2010	Basket, Wastepaper, Step-On	1	C	C	C	C	-	-	-	-	-	-
F3200	Clock, Battery, 12" Diameter	1	C	C	C	C	-	-	-	-	-	-
M0755	Flowmeter, Oxygen, Low Flow	1	C	C	C	C	-	-	A	-	-	-
M0765	Regulator, Vacuum	1	C	C	C	C	-	-	B	-	-	-
M1620	Holder, Chart, Patient, Wall or Door Mounted	1	A	A	A	A	-	-	-	-	-	-
M1801	Computer, Microprocessing, w/Flat Panel Monitor	1	C	C	C	C	-	A	-	-	-	-
M3072	Frame, Infectious Waste Bag w/Lid	1	C	C	C	C	-	-	-	-	-	-
M4100	Sphygmomanometer, Aneroid, Wall Mounted	1	C	C	C	C	-	-	-	-	-	-
M4116	Monitor, Vital Signs	1	C	C	C	C	-	A	-	-	-	-
M4200	Otoscope/Ophthalmoscope, Wall Mounted	1	C	C	-	C	-	A	-	-	-	-
M4255	Stand, IV, Adjustable	1	C	C	C	C	-	-	-	-	-	-
M4266	Pump, Volumetric, Infusion, Multiple Line	1	C	C	C	C	-	A	-	-	-	-
M4665	Stretcher, Recovery, Surgical	1	C	C	C	C	-	-	-	-	-	-
M7470	Light, Surgical, Ceiling, Single, Small	1	E	E	E	E	-	F	-	-	-	-
M7660	Defibrillator/Monitor/Recorder, Portable	1	C	C	C	C	-	A	-	-	-	-
M7710	Electrocardiograph, 12 Lead, Portable	1	C	C	C	C	-	A	-	-	-	-
M7905	Oximeter, Pulse	1	C	C	C	C	-	A	-	-	-	-
M8810	Stand, Mayo	1	C	C	C	C	-	-	-	-	-	-
P3100	Lavatory, Vitreous China, Slab Type	1	A	A	A	A	D	-	-	-	-	-

TRGM1 - DATA/TELEPHONE EQUIPMENT

JSN	Nomenclature	Qty	Logistics			
			AR	NA	AF	VA
A1010	Telecommunication Outlet	2	A	A	A	A
A1014	Telephone, Wall Mounted, 1 Line, with Speaker	1	A	A	A	A

NOTES:

- The following equipment may be mounted on JSN A1132: JSN M4100, M4200, and M4116.

Room Description: Treatment Room, General, 1 Bed	NSF: 180	TRGM1	
Plate Description: Equipment Schedule	Scale:	Sheet 5	of 5