

KEY NOTES

1. MOUNT A5145, HOOK, AT 1372 [4'-6"] AFF. PROVIDE 2-A5145'S FOR NAVY PROJECTS ONLY.
MOUNT 1-A5145 AT 1372 [4'-6"] AFF AND 1-A5145 AT 1524 [5'-0"] AFF.
2. PROVIDE A5109 AND A5110, GRAB BARS, THAT COMPLY WITH ADA.
3. MOUNT A5145, HOOK, AT 1524 [5'-0"] AFF.
4. A5090, SANITARY NAPKIN DISPOSAL, IS REQUIRED IN FEMALE LOCKER ROOMS ONLY.

LOCKER ROOM, CHANGING, SHOWER AREA & TOILET, UNISEX (LR002/SHWR1/TLTU1)

TOILETS, LOCKERS AND LOUNGE FACILITIES

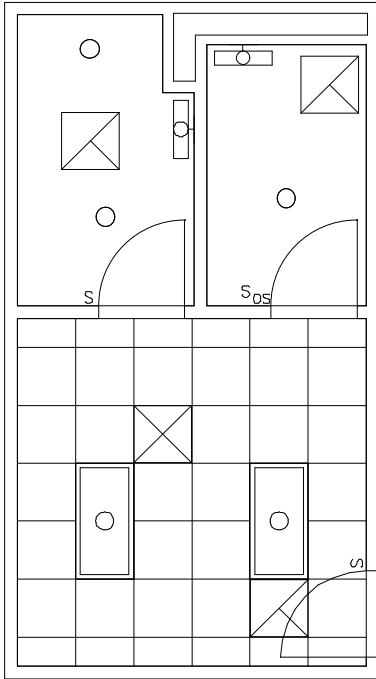
FLOOR/EQUIPMENT PLAN

24.17 NSM (260 NSF)

DATE: 07/12/2001

0 1000 2000

1:50 SCALE (MILLIMETERS)



LOCKER ROOM, CHANGING, SHOWER AREA & TOILET, UNISEX (LR002/SHWR1/TLTU1)

TOILETS, LOCKERS AND LOUNGE FACILITIES

CEILING PLAN

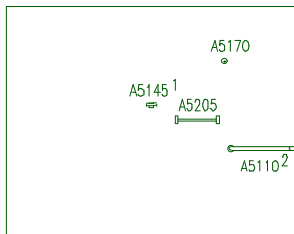
24.17 NSM (260 NSF)

DATE: 07/12/2001

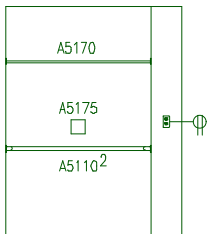
0 1000 2000



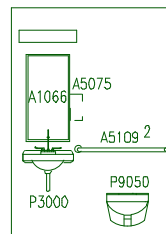
1:50 SCALE (MILLIMETERS)



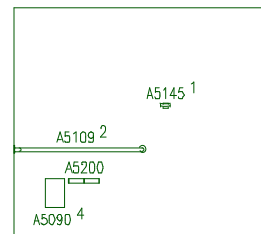
WEST (SHOWER)



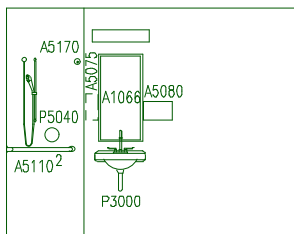
NORTH (SHOWER)



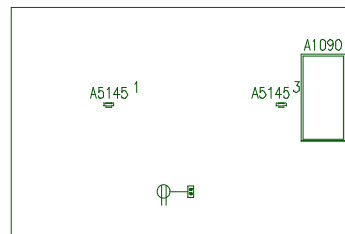
NORTH (TOILET)



EAST (TOILET)



EAST (SHOWER)



WEST (LOCKER ROOM)

KEY NOTES

1. MOUNT A5145, HOOK, AT 1372 [4'-6"] AFF. PROVIDE 2-A5145'S FOR NAVY PROJECTS ONLY.
MOUNT 1-A5145 AT 1372 [4'-6"] AFF AND 1-A5145 AT 1524 [5'-0"] AFF.
2. PROVIDE A5110, GRAB BARS, THAT COMPLY WITH ADA.

General Notes:

1. For typical equipment mounting heights see "TYPICAL EQUIPMENT MOUNTING HEIGHTS" drawing.
2. MIL-STD-1691 data can only be accessed from the Equipment Plan.

KEY NOTES

1. MOUNT A5145, HOOK, AT 1372 [4'-6"] AFF. PROVIDE 2-A5145'S FOR NAVY PROJECTS ONLY.
MOUNT 1-A5145 AT 1372 [4'-6"] AFF AND 1-A5145 AT 1524 [5'-0"] AFF.
2. PROVIDE A5109, GRAB BARS, THAT COMPLY WITH ADA.
3. MOUNT A5145, HOOK, AT 1524 [5'-0"] AFF.
4. A5090, SANITARY NAPKIN DISPOSAL, IS REQUIRED IN FEMALE LOCKER ROOMS ONLY.

LOCKER ROOM, CHANGING, SHOWER AREA & TOILET, UNISEX (LRO02/SHWR1/TLTU1)

TOILETS, LOCKERS AND LOUNGE FACILITIES

ELEVATIONS

24.17 NSM (260 NSF)

DATE: 07/12/2001

0 1000 2000

1:50 SCALE (MILLIMETERS)

Project Rooms (User Contents Only)

As of 07/27/2005

Page 1

Room Code: LROO2 Room Qty: 1 Room Area: 144.26 Room Description: LOCKER ROOM, CHANGING

JSN	NOMENCLATURE	Qty	UNIT	LOG	Utl	Utl	Utl	Utl	Utl	Utl
			ISSUE	CAT	1	2	3	4	5	6

Equipment per Room:

A1040	Locker, 2 Person, Side by Side, 72x15x18	9	EA	C
A1080	Mirror, Posture, Wall Mounted	1	EA	A
A1090	Mirror, Float Glass, With SS Frame & Shelf, 36X1	1	EA	A
A5025	Bench, Locker Room, Portable	1	EA	C
A5145	Hook, Garment, Double, SS, Surface Mounted	2	EA	A
F2000	Basket, Wastepaper, Round, Metal, 18 H x 16 Dia.	1	EA	C
A1066	Mirror, Float Glass, With SS Frame, 36X18	1	EA	A
A5025	Bench, Locker Room, Portable	1	EA	C
A5075	Dispenser, Soap, Disposable	1	EA	C
A5080	Dispenser, Paper Towel, SS, Surface Mounted	1	EA	A
A5110	Grab Bar, 1-1/4" Dia., SS, 2 Wall, Shower Use	1	EA	A
A5145	Hook, Garment, Double, SS, Surface Mounted	1	EA	A
A5170	Rod, Shower Curtain, 1"Diameter, W/Curtain & Hoo	1	EA	A
A5175	Soap Dish, With Bar, SS, Recessed	1	EA	A
A5205	Bar, Towel, 1" Diameter, SS, Surface Mounted	1	EA	A
F2000	Basket, Wastepaper, Round, Metal, 18 H x 16 Dia.	1	EA	C
P3000	Lavatory, Vitreous China, Straight Back	1	EA	A	D
P5040	Shower, Single, Hand-Held	1	EA	A	D
A1066	Mirror, Float Glass, With SS Frame, 36X18	1	EA	A
A5075	Dispenser, Soap, Disposable	1	EA	C
A5080	Dispenser, Paper Towel, SS, Surface Mounted	1	EA	A
A5090	Disposal, Sanitary Napkin, SS, Surface Mounted	1	EA	A
A5109	Grab Bar, 1-1/4" Dia., SS, 2 Wall, W/C Accessibl	1	EA	A
A5145	Hook, Garment, Double, SS, Surface Mounted	1	EA	A
A5200	Dispenser, Toilet Tissue, SS, 2-Roll, Surface Mn	1	EA	A
F2000	Basket, Wastepaper, Round, Metal, 18 H x 16 Dia.	1	EA	C
P3000	Lavatory, Vitreous China, Straight Back	1	EA	A	D
P9050	Toilet, Wall Hung, Siphon Jet	1	EA	A	B

=====

GRAND TOTAL

37