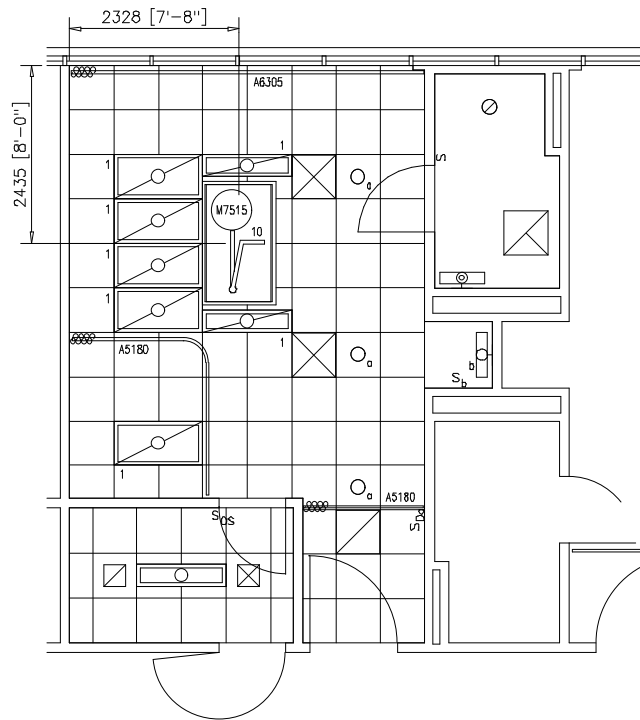


1:50 SCALE (MILLIMETERS)



KEY NOTES

1. LIGHT FIXTURE IS CONTROLLED BY SWITCH LOCATED IN A1110, PREFABRICATED HEADWALL.
SEE HEADWALL ELEVATION FOR SWITCH ELEVATION.
2. PROVIDE M7440, SURGICAL LIGHT, INSTEAD OF W7515, SURGICAL LIGHT, FOR AIR FORCE PROJECTS.

L & D - LDR/LDRP (Wide)
& TOILET, SHOWER, INPATIENT (LDRP2/TLTS2)

LABOR & DELIVERY/OB UNIT

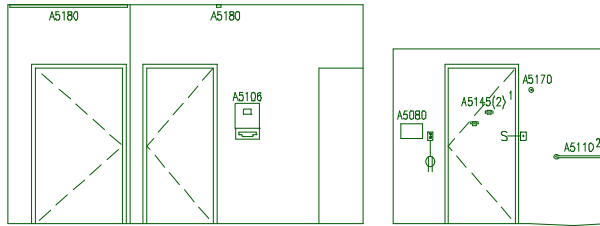
CEILING PLAN

DATE: 07/12/2001

44.92 NSM (483 NSF)

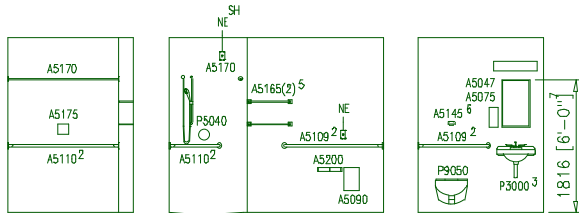
0 1000 2000

1:50 SCALE (MILLIMETERS)



SOUTH

WEST (BATHROOM) 4



NORTH (BATHROOM)

EAST (BATHROOM) 4

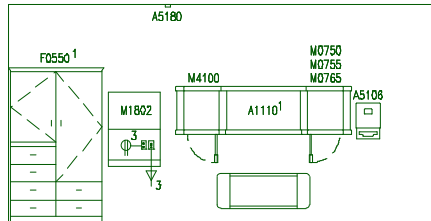
SOUTH (BATHROOM)

NOTES

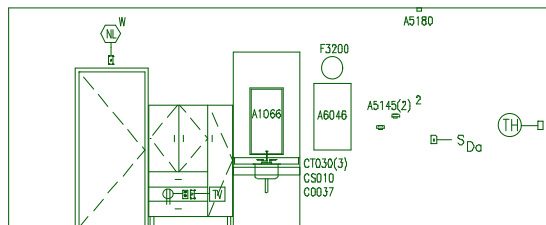
1. SEE TYPICAL EQUIPMENT MOUNTING HEIGHTS BEGINNING ON SHEET 7.01.01.

KEY NOTES

1. MOUNT 1-A5145, HOOK, AT 1372 [4'-6"] AFF AND 1-A5145 AT 1524 [5'-0"] AFF.
2. PROVIDE A5108 AND A5110, GRAB BARS, THAT COMPLY WITH ADA.
3. DO NOT PROVIDE GOOSENECK STYLE FAUCET.
4. WHERE FEASIBLE, SLOPE TOILET ROOM FLOOR TOWARDS THE SHOWER.
5. MOUNT 1-A5165, SHELF, AT 1219 [4'-0"] AFF AND 1-A5165 AT 1524 [5'-0"] AFF.
6. MOUNT A5145, HOOK, AT 1219 [4'-0"] AFF.
7. MOUNT A5047, MEDICINE CABINET, WITH BOTTOM OF REFLECTIVE SURFACE AT 1016 [3'-4"] IN 10% OF ALL LDRP ROOMS.



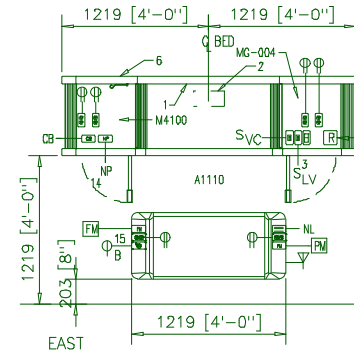
WEST



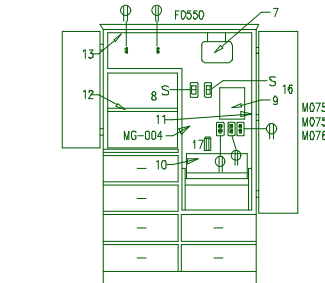
EAST

KEY NOTES

1. SEE ELEVATIONS OF F0550, RESUSCITATION ARMORE, AND A1110, HEADWALL, FOR UTILITIES.
2. MOUNT 1-A5145, HOOK, AT 1372 [4'-6"] AFF AND 1-A5145 AT 1524 [5'-0"] AFF.
3. COORDINATE LOCATION OF ELECTRICAL OUTLETS WITH M1802, WALL MOUNTED, FOLD DOWN COMPUTER.



EAST



WEST

NOTES

1. RECEPTACLES ON CRITICAL POWER SHALL BE SERVED FROM DIFFERENT CRITICAL POWER TRANSFER SWITCHES.
2. ALL RECEPTACLES IN HEADWALL SHALL BE HOSPITAL GRADE.

KEY NOTES

1. DOWNLIGHT MOUNTED IN HEADWALL.
2. AREA FOR MEDICAL GAS DROPS.
3. THREE POSITION MOMENTARY CONTACT ROCKER SWITCH WITH CENTER "OFF" POSITION. SWITCH CONTROLS UP AND DOWN LIGHT FIXTURES IN HEADWALL VIA LOW VOLTAGE CONTROLLER.
4. LOW VOLTAGE CONTROLLER FOR CONTROL OF UP AND DOWN LIGHTS IN HEADWALL.
5. SWITCH CONTROLS CEILING MOUNTED INCANDESCENT DOWN LIGHT FIXTURES.
6. UPLIGHT MOUNTED IN HEADWALL.
7. INFANT WARMER SYSTEM.
8. SWITCH IS FOR INFANT WARMER SYSTEM.
9. INFANT RESUSCITATION SYSTEM.
10. FOLD DOWN BED.
11. ACCESSORY MOUNTING RAILS.
12. ADJUSTABLE SHELF.
13. AUTOMATIC EXHAUST FAN.
14. AUDIO/VISUAL TYPE NURSE CALL PATIENT STATION. PROVIDE CORD CONNECTED PATIENT CONTROL UNIT WITH NURSE CALL BUTTON, LIGHTING CONTROL, SPEAKER VOLUME AND TELEVISION CONTROL.
15. CONNECT RECEPTACLE TO CRITICAL BRANCH POWER SERVING THE PATIENT HEADWALL.
16. SWITCH CONTROLS CEILING MOUNTED LIGHT FIXTURE ABOVE ARMOIRE.
17. VACUUM SLIDE.

General Notes:

1. For typical equipment mounting heights see "TYPICAL EQUIPMENT MOUNTING HEIGHTS" drawing.
2. MIL-STD-1691 data can only be accessed from the Equipment Plan.

L & D - LDR/LDRP (Wide)
& TOILET, SHOWER, INPATIENT (LDRP2/TLTS2)

LABOR & DELIVERY/OB UNIT	0	1000	2000
ELEVATIONS	44.92 NSM (483 NSF)		
DATE: 07/12/2001			1:50 SCALE (MILLIMETERS)

Project Rooms (User Contents Only)

As of 07/18/2005

Page 1

Room Code: LDRP2 Room Qty: 1 Room Area: 425.11 Room Description: LABOR & DELIVERY, LDRP (WIDE)

JSN	NOMENCLATURE	Qty	UNIT ISSUE	LOG CAT	Utl 1	Utl 2	Utl 3	Utl 4	Utl 5	Utl 6
Equipment per Room:										
A1066	Mirror, Float Glass, With SS Frame, 36X18	1	EA	A
A1110	Headwall, Prefabricated, General, 1-2 bed	1	EA	A	.	F	G	.	.	.
A5075	Dispenser, Soap, Disposable	1	EA	C
A5080	Dispenser, Paper Towel, SS, Surface Mounted	1	EA	A
A5106	Waste Disposal Unit, Sharps w/Glove Dispenser	3	EA	C
A5145	Hook, Garment, Double, SS, Surface Mounted	4	EA	A
A5180	Track, Cubicle, Surface Mounted, With Curtain	2	FT	A
A6046	Artwork, Decorative, With Frame	1	EA	C
A6305	Drapes, Pair	1	SY	C
C0037	Rail, Apron, 4x36x1	1	EA	A
CS010	Sink, SS, Single Compartment, 7.5x12x12 ID	1	EA	A	D
CT030	Countertop, High Pressure Laminate	3	LF	A
E0963	Cart, General Storage, Mobile	1	EA	C
F0270	Chair, Rocking, High Back	1	EA	C
F0315	Chair, Sleeper	1	EA	C
F0340	Stool, Self Adjusting	1	EA	C
F0355	Footstool, Straight	1	EA	C
F0400	Cabinet, Bedside, Door, Drawer	1	EA	C
F0550	Armoire, Resuscitation	2	EA	C	.	A
F0560	Wardrobe, Television	1	EA	C
F0725	Table, Occasional, Executive, Wood	1	EA	C
F2000	Basket, Wastepaper, Round, Metal, 18 H x 16 Dia.	1	EA	C
F3200	Clock, Battery, 12" Diameter	1	EA	C
M0430	Recorder / Player, Cassette, Video	1	EA	C	.	A
M0500	Television, Color, 20" Diagonal	1	EA	C	.	A
M0750	Flowmeter, Air, Connect w/50 PSI Supply	2	EA	C	.	.	K	.	.	.
M0755	Flowmeter, Oxygen, Low Flow	2	EA	C	.	.	A	.	.	.
M0765	Regulator, Vacuum	2	EA	C	.	.	B	.	.	.
M1802	Work Station, Computer, Retractable, Wall Mount	1	EA	C	.	G	.	.	.	D
M3005	Bassinet, w/Cart	1	EA	C
M3070	Hamper, Linen, Mobile, w/Lid	1	EA	C
M3072	Frame, Infectious Waste Bag w/Lid	1	EA	C
M4100	Sphygmomanometer, Aneroid, Wall Mounted	1	EA	C

M4116	Monitor, Vital Signs	1	EA	C	.	A
M4255	Stand, IV, Adjustable	1	EA	C
M4266	Pump, Volumetric, Infusion, Multiple Line	1	EA	C	.	A
M7040	Table, Overbed	1	EA	C
M7420	Light, Exam, Mobile	1	EA	C	.	A
M7515	Light, Surgical, Ceiling Mtd, Birthing/Retractab	1	EA	A	.	F
M7820	Monitor, Fetal, Bedside/Stand Alone	1	EA	C	.	A	.	.	.	D
M7910	Thermometer, Electronic	2	EA	C
M8960	Cart, Surgical Case, Birthing Room	1	EA	C
M8965	Cart, Fetal Monitoring, Birthing Room	1	EA	C
A5030	Bench, Stall, Shower, Built In	1	EA	A
A5047	Cabinet, Medicine	1	EA	A
A5075	Dispenser, Soap, Disposable	1	EA	C
A5080	Dispenser, Paper Towel, SS, Surface Mounted	1	EA	A
A5090	Disposal, Sanitary Napkin, SS, Surface Mounted	1	EA	A
A5109	Grab Bar, 1-1/4" Dia., SS, 2 Wall, W/C Accessibl	1	EA	A
A5110	Grab Bar, 1-1/4" Dia., SS, 2 Wall, Shower Use	1	EA	A
A5145	Hook, Garment, Double, SS, Surface Mounted	1	EA	A
A5165	Shelf, 5" Depth, SS, Surface Mounted	2	EA	A
A5170	Rod, Shower Curtain, 1"Diameter, W/Curtain & Hoo	1	EA	A
A5175	Soap Dish, With Bar, SS, Recessed	1	EA	A
A5200	Dispenser, Toilet Tissue, SS, 2-Roll, Surface Mn	1	EA	A
F2000	Basket, Wastepaper, Round, Metal, 18 H x 16 Dia.	1	EA	C
P3000	Lavatory, Vitreous China, Straight Back	1	EA	A	D
P5040	Shower, Single, Hand-Held	1	EA	A	D
P9050	Toilet, Wall Hung, Siphon Jet	1	EA	A	B

=====

GRAND TOTAL

73