

KEY NOTES
 1. SWITCH FOR ROOM ON/OFF
 LIGHTING CONTROLS. DIMMING
 CONTROLS ARE PROVIDED
 IN M5016, REFRACTION DESK.

EYE LANE – ARMY/AIR FORCE (EYEL1)

OPHTHALMOLOGY/OPTOMETRY

CEILING PLAN

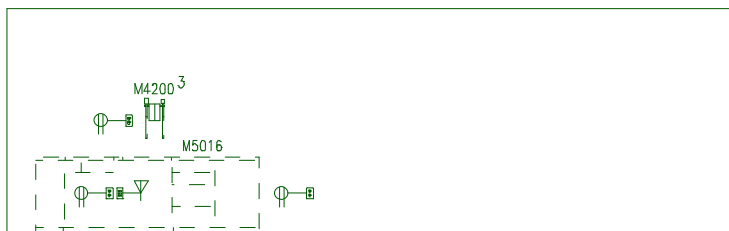
16.96 NSM (183 NSF)

DATE: 03/19/2002

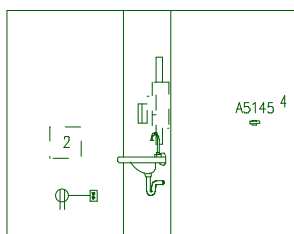
0 1000 2000



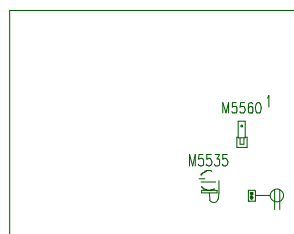
1:50 SCALE (MILLIMETERS)



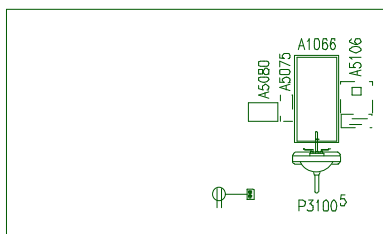
WEST



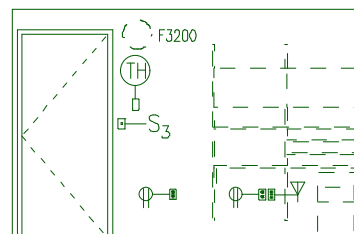
NORTH



SOUTH



EAST



EAST

KEY NOTES

1. M5560, ACUITY TEST PROJECTOR, IF WALL MOUNTED. PROVIDE WALL BACKING.
2. SCREEN FOR M5560, ACUITY TEST PROJECTOR.
3. M4200, OTOSCOPE/OPHTHALMOSCOPE, IS OPTIONAL.
4. MOUNT A5145, HOOK, AT 1372 [4'-6"] AFF.
5. P3200, UTR ELECTRONIC LAVATORY, MAY BE USED INSTEAD OF P3100, LAVATORY. FOR THE P3200 PROVIDE EITHER BATTERY POWER OR HARD WIRED CONNECTION.

General Notes:

1. For typical equipment mounting heights see "TYPICAL EQUIPMENT MOUNTING HEIGHTS" drawing.
2. MIL-STD-1691 data can only be accessed from the Equipment Plan.

EYE LANE – ARMY/AIR FORCE (EYEL1)

OPHTHALMOLOGY/OPTOMETRY

0 1000 2000

ELEVATIONS

16.96 NSM (183 NSF)

DATE: 03/19/2002

1:50 SCALE (MILLIMETERS)

Project Rooms (User Contents Only)

As of 06/10/2005

Page 1

Room Code: EYEL1 Room Qty: 1 Room Area: 182.57 Room Description: EYE LANE-ARMY/AF

JSN	NOMENCLATURE	Qty	UNIT ISSUE	LOG CAT	Utl 1	Utl 2	Utl 3	Utl 4	Utl 5	Utl 6
Equipment per Room:										
A1066	Mirror, Float Glass, With SS Frame, 36X18	2	EA	A
A5075	Dispenser, Soap, Disposable	2	EA	C
A5080	Dispenser, Paper Towel, SS, Surface Mounted	2	EA	A
A5106	Waste Disposal Unit, Sharps w/Glove Dispenser	2	EA	C
A5145	Hook, Garment, Double, SS, Surface Mounted	2	EA	A
E0224	Worksurface, Computer, O/H Cab, Wall Mtd, 60" W	2	EA	C	.	A
E0948	Cart, General Storage, Mobile, 42"H x 32"W x 22"	2	EA	C
F0205	Chair, Side With Arms	2	EA	C
F0280	Chair, Swivel, Low Back	2	EA	C
F2000	Basket, Wastepaper, Round, Metal, 18 H x 16 Dia.	2	EA	C
F3200	Clock, Battery, 12" Diameter	2	EA	C
M1620	Holder, Chart, Patient, Wall or Door Mounted	2	EA	A
M1800	Computer, Microprocessing, w/CRT Monitor	2	EA	C	.	A
M4200	Otoscope/Ophthalmoscope, Wall Mounted	2	EA	C	.	A
M5016	Desk, Refraction w/console, w/o Sink	2	EA	A	.	F
M5030	Stool, Surgeon, Revolving	2	EA	C
M5500	Autorefractor, Ophthalmic	2	EA	C	.	A
M5520	Lensometer	2	EA	C	.	A
M5530	Lamp, Slit, w/Applanation Tonometer	2	EA	C	.	A
M5535	Ophthalmoscope, Binocular, Indirect	2	EA	C	.	A
M5545	Ophthalmometer/Keratometer	2	EA	C	.	A
M5560	Projector, Acuity w/Stand, Wall Mounted Screen	2	EA	C	.	A
M5600	Unit, Exam, Eye, w/Motor Chair, Phoropter	2	EA	C	.	A
M5700	Frame Set, Lens, Trial	2	EA	C
P3100	Lavatory, Vitreous China, Slab Type	2	EA	A	D

=====

GRAND TOTAL

50