

KEY NOTES

1. COORDINATE LOCATION OF M1620, PATIENT CHART HOLDER, AND ROOM SIGNAGE.
2. MOUNT A5145, HOOK, AT 1372 [4'-6"] AFF.
3. MOUNT A5145, HOOK, AT 1524 [5'-0"] AFF.
4. P3200, ELECTRONIC LAVATORY, MAY BE USED INSTEAD OF P3100, LAVATORY. FOR THE P3200 PROVIDE EITHER BATTERY POWER OR HARD WIRED CONNECTION.
5. MOVE P3100, LAVATORY, AND ACCESSORIES TO THE EAST WALL AND F0205, CHAIR, AND X3830, FILM ILLUMINATOR, TO THE WEST WALL FOR ARMY PROJECTS ONLY.

EXAM ROOM AIR FORCE (EXRG3)

CLINIC OF THE FUTURE

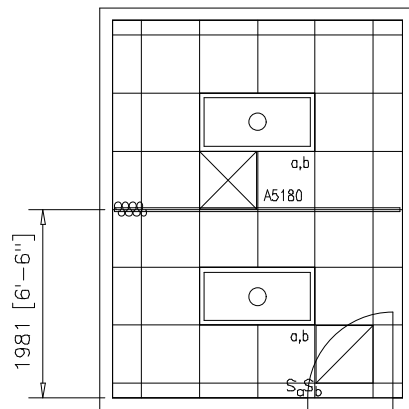
FLOOR/EQUIPMENT PLAN

DATE: 01/28/2002

12.08 NSM (130 NSF)

0 1000 2000

1:50 SCALE (MILLIMETERS)



EXAM ROOM AIR FORCE (EXRG3)

CLINIC OF THE FUTURE

CEILING PLAN

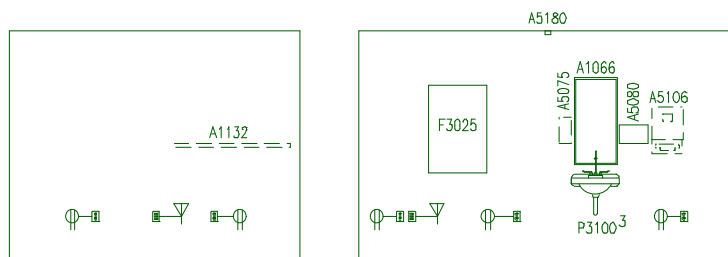
DATE: 01/28/2002

12.08 NSM (130 NSF)

0 1000 2000

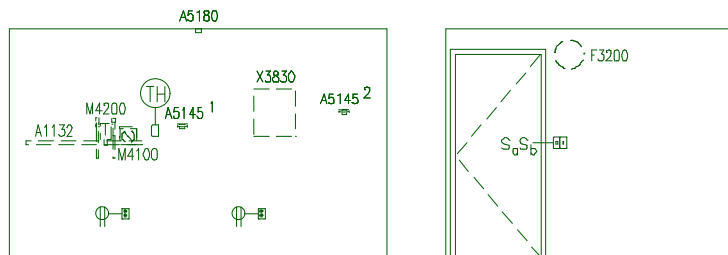


1:50 SCALE (MILLIMETERS)



NORTH

WEST



EAST

SOUTH

KEY NOTES

1. MOUNT A5145, HOOK, AT 1372 [4'-6"] AFF.
2. MOUNT A5145, HOOK, AT 1524 [5'-0"] AFF.
3. P3200, ELECTRONIC LAVATORY, MAY BE USED INSTEAD OF P3100, LAVATORY. FOR THE P3200 PROVIDE EITHER BATTERY POWER OR HARD WIRED CONNECTION.

General Notes:

1. For typical equipment mounting heights see "TYPICAL EQUIPMENT MOUNTING HEIGHTS" drawing.
2. MIL-STD-1691 data can only be accessed from the Equipment Plan.

EXAM ROOM AIR FORCE (EXRG3)

CLINIC OF THE FUTURE

ELEVATIONS

12.08 NSM (130 NSF)

DATE: 01/28/2002

0 1000 2000

1:50 SCALE (MILLIMETERS)

Project Rooms (User Contents Only)

As of 06/08/2005

Page 1

Room Code: EXRG3 Room Qty: 1 Room Area: 129.98 Room Description: EXAM ROOM AIR FORCE

JSN	NOMENCLATURE	Qty	UNIT ISSUE	LOG CAT	Utl 1	Utl 2	Utl 3	Utl 4	Utl 5	Utl 6
Equipment per Room:										
A1066	Mirror, Float Glass, With SS Frame, 36X18	1	EA	A
A1132	Rail, Accessory Mounting, Length As Required	2	LF	C
A5075	Dispenser, Soap, Disposable	1	EA	C
A5080	Dispenser, Paper Towel, SS, Surface Mounted	1	EA	A
A5106	Waste Disposal Unit, Sharps w/Glove Dispenser	1	EA	C
A5145	Hook, Garment, Double, SS, Surface Mounted	2	EA	A
A5180	Track, Cubicle, Surface Mounted, With Curtain	1	FT	A
E0042	Workcenter, Computer, Free Standing, 48" W	1	EA	C
E0948	Cart, General Storage, Mobile, 42"H x 32"W x 22"	1	EA	C
F0205	Chair, Side With Arms	2	EA	C
F0280	Chair, Swivel, Low Back	1	EA	C
F0340	Stool, Self Adjusting	1	EA	C
F2000	Basket, Wastepaper, Round, Metal, 18 H x 16 Dia.	2	EA	C
F3025	Board, Bulletin, Wood Framed, 36 x 24	1	EA	A
F3200	Clock, Battery, 12" Diameter	1	EA	C
M1620	Holder, Chart, Patient, Wall or Door Mounted	1	EA	A
M1801	Computer, Microprocessing, w/Flat Panel Monitor	1	EA	C	.	A
M3072	Frame, Infectious Waste Bag w/Lid	1	EA	C
M4100	Sphygmomanometer, Aneroid, Wall Mounted	1	EA	C
M4200	Otoscope/Ophthalmoscope, Wall Mounted	1	EA	C	.	A
M7400	Light, Exam, Table Mounted, Spotlight	1	EA	C	.	A	.	.	.	C
M9025	Table, Examination/Treatment, With Cabinet	1	EA	C	.	A
P3100	Lavatory, Vitreous China, Slab Type	1	EA	A	D
X3830	Illuminator, Film, Single, Wall Mounted, 20x17x5	1	EA	C	.	A

=====

GRAND TOTAL

28