

KEY NOTES:

1. DESK/DRESSER U0004
2. PROVIDE A5030 BENCH AT HANDICAP ACCESSIBLE ROOMS AND FOR NAVY PROJECTS.
3. SIZE WINDOWS TO THE MAXIMUM ALLOWED BY NF-3-400-01 (LATEST EDITION).
DESIGN: ENERGY CONSERVATION & ASHRAE 90.1 (LATEST EDITION) ASHRAE ENERGY
STANDARD FOR BUILDINGS EXCEPT LOW-RISE RESIDENTIAL BUILDINGS, BUILDING ENVELOPE
REQUIREMENTS APPENDIX B
4. WASTE BASKET MAY BE ELIMINATED AS DETERMINED BY FACILITY.
5. BREAK AWAY SHOWER CURTAIN TRACK U0003
6. PROVIDE WINDOW TREATMENT AS DETERMINED BY FACILITY.
7. BASEBOARD RADIATOR MAY OCCUR ALONG EXTERIOR WALL.
8. PROVIDE A5109 & A5110 GRAB BARS AT HANDICAP ACCESSIBLE ROOMS ONLY.
9. PROVIDE IMPACT RESISTANT CONTINUOUS POLYCARBONATE SHEET OVER WINDOWS.
ATTACH TO WINDOW FRAMING, INSULATING GLASS WINDOW GLAZING NEEDS TO BE
LAMINATED SAFETY GLASS.
10. SECURITY ROBE HOOK U0006. MOUNTING 1372 [4'-6"] A.F.F.
11. RECESSED THERMOSTAT TAMPER PROOF.

BEDROOM, SUBSTANCE ABUSE ALCOHOL REHAB, 2 BEDS (BRNP2) 4.01.08

NURSING UNIT

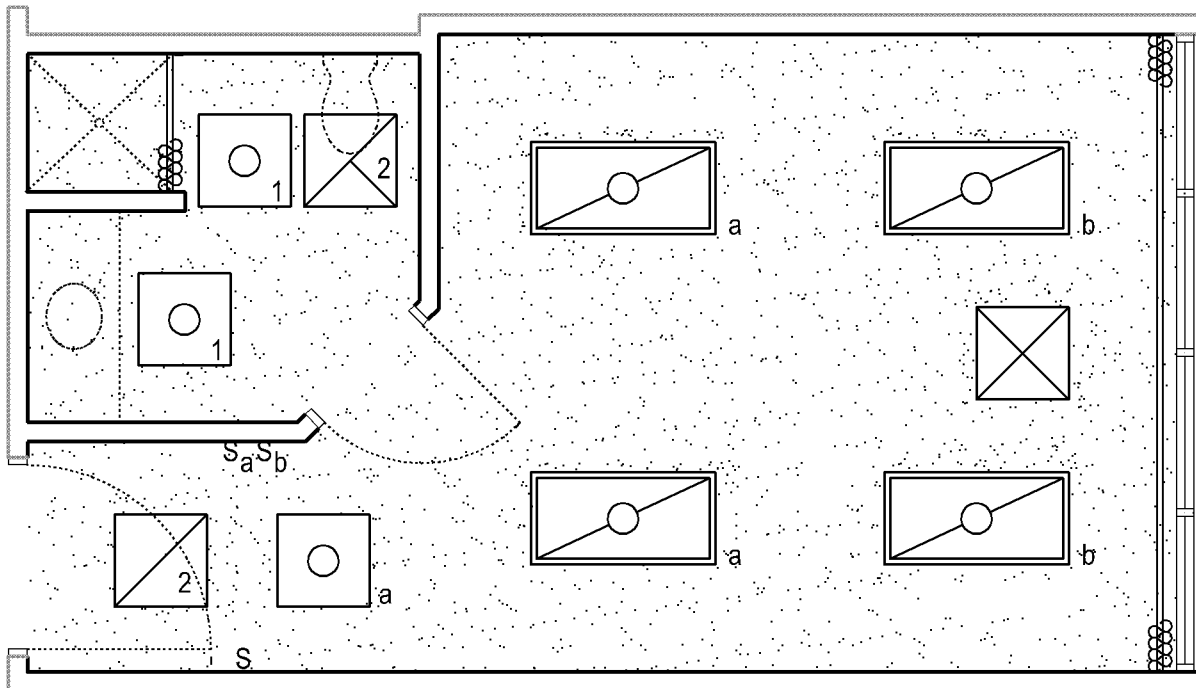
FLOOR /EQUIPMENT PLAN 25.08 NSM (270 NSF)

DATE: 04/24/2006

0 1000 2000



1:50 SCALE (MILLIMETERS)



KEY NOTES:

1. SECURITY LIGHT FIXTURE. ALL EXPOSED SEAMS TO BE CONTINUOUSLY WELDED. ONE PIECE DOOR WITH CONTINUOUS PIANO HINGE. FULLY RECESSED CAPTIVE FASTENERS. LENS TO BE ACRYLIC AND SECURED TO PREVENT REMOVAL. SECURITY MOUNT TO CEILING TO PREVENT FIXTURE REMOVAL.
2. HVAC SUPPLY, RETURN AND EXHAUST GRILLS SHELL BE SECURITY TYPE CONSTRUCTION TO PROHIBIT REMOVAL FROM THE FRONT OF THE GRILLE.

BEDROOM, SUBSTANCE ABUSE ALCOHOL REHAB, 2 BEDS (BRNP2) 4.01.08

NURSING UNIT

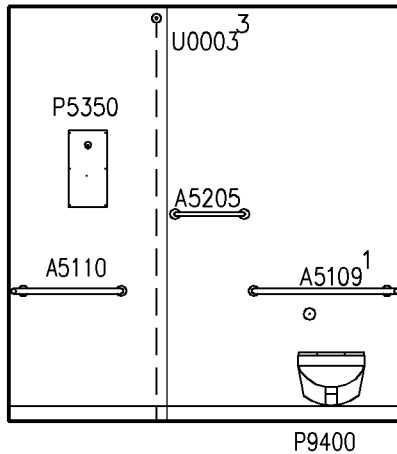
CEILING PLAN

DATE: 04/24/2006

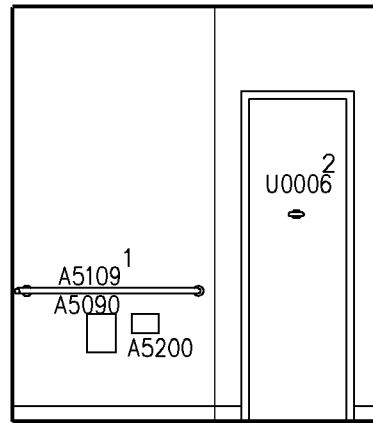
0 1000 2000



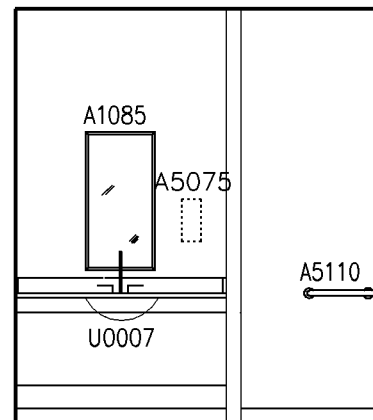
1:50 SCALE (MILLIMETERS)



NORTH
(BATHROOM)



EAST
(BATHROOM)



WEST
(BATHROOM)

NOTES

1. SEE TYPICAL EQUIPMENT MOUNTING HEIGHTS SCHEDULE. SEE SECTION 7.01

KEY NOTES:

1. PROVIDE A5109 AT HANDICAP ACCESSIBLE ROOMS ONLY.
2. ROBE HOOK, PSYCHIATRIC U0006
3. BREAK AWAY SHOWER CURTAIN TRACK U0003

**BEDROOM
SUBSTANCE ABUSE/ALCOHOL REHAB,
2 BEDS (BRNP2-TLTP3) 4.01.08**

NURSING UNIT

ELEVATIONS

DATE: 04/24/2006

0 1000 2000



1:50 SCALE (MILLIMETERS)

Medical Equipment Room Guide Plates

4.01 Nursing Unit

Plate Number 4.01.08

Room Name: Bedroom, Substance Abuse/Alcohol Rehab, 2 Beds

SEPS# BRNP2

JSN	Nomenclature	Qty	Army Cat	Navy Cat	AF Cat	Utilities					
						1	2	3	4	5	6
F0210	Chair, Side, Without Arms	2	C	C	C
F0260	Chair, High Back, Patient	2	C	C	C
F0400	Cabinet, Bedside, Door, Drawer	2	C	C	C
F2000	Basket, Wastepaper, Round, Metal, 18 H x 16 Dia	1	C	C	C
F2405	Bed, Non Medical, Single	2	C	C	C
U0004	Dresser/Desk, Psychiatric	2	C	C	

Medical Equipment Room Guide Plates

4.01 Nursing Unit

Plate Number 4.01.08

Room Name: Bedroom, Substance Abuse/Alcohol Rehab, 2 Beds (TLTP3)

SEPS# BRNP2

JSN															
			Army	Navy	Utilities										
Nomenclature		Qty	Cat	Cat	AF Cat	1	2	3	4	5	6				
A1085	Mirror, SS, with SS Frame, 36 x 18	1	A	A	A				
A5030	Bench, Stall, Shower, Built In	1	A	A	A				
A5075	Dispenser, Soap, Disposable	1	C	C	C				
A5080	Dispenser, Paper Towel, SS, Surface Mounted	1	A	A	A				
A5090	Disposal, Sanitary Napkin, SS, Surface Mounted	1	A	A	A				
A5109	Grab Bar 1 1/4" Dia., SS, 2 Wall, Shower Use	1	A	A	A				
A5110	Grab Bar 1 1/4" Dia., SS, Surface Mounted	1	A	A	A				
A5200	Dispenser, Toilet Tissue, SS, 2-Roll, Surface Mounted	1	A	A	A				
A5207	Bar, Towel, 1" Diameter, SS, Surface Mounted, Psychiatric	1	A	A	A				
F2000	Basket, Wastepaper, Round, Metal	1	C	C	C				
P5350	Shower, Patient Psychiatric	1	A	A	A	D				
P9400	Toilet, Wall Hung, Siphon Jet, Psychiatric	1	A	A	A	B				
U0003	Shower Curtain Track, With Break Away Curtain	1	A	A	A				
U0006	Robe Hook, Security, Psychiatric, SS, Surface Mounted	1	A	A	A				
U0007	Lavatory, Vitreous China, Under Countertop Mounted with Safety Faucet Trim	1	A	A	A	D				