

KEY NOTES:

1. SIZE WINDOWS TO THE MAXIMUM ALLOWED BY NF-3-400-01 (LATEST EDITION).
DESIGN: ENERGY CONSERVATION & ASHRAE 90.1 (LATEST EDITION) ASHRAE ENERGY
STANDARD FOR BUILDINGS EXCEPT LOW-RISE RESIDENTIAL BUILDINGS, BUILDING
ENVELOPE REQUIREMENTS APPENDIX B
2. MOUNT A5145 ROBE HOOK 1372 [4'-6"] AFF
3. BASEBOARD RADIATOR MAY OCCUR AT EXTERIOR WALLS.
4. PROVIDE A5109 & A5110 GRAB BARS, THAT COMPLY WITH ADA
5. PROVIDE A5030, BENCH AT HANDICAP PATIENT ROOMS AND FOR NAVY PROJECTS
6. PROVIDE WORKSTATION W/ PIVOT OPTION.
7. BATHROOM EQUAL 5.85 NSM [63 NSF]
8. DRY ERASE BOARD, F3050-18"H x 24"W

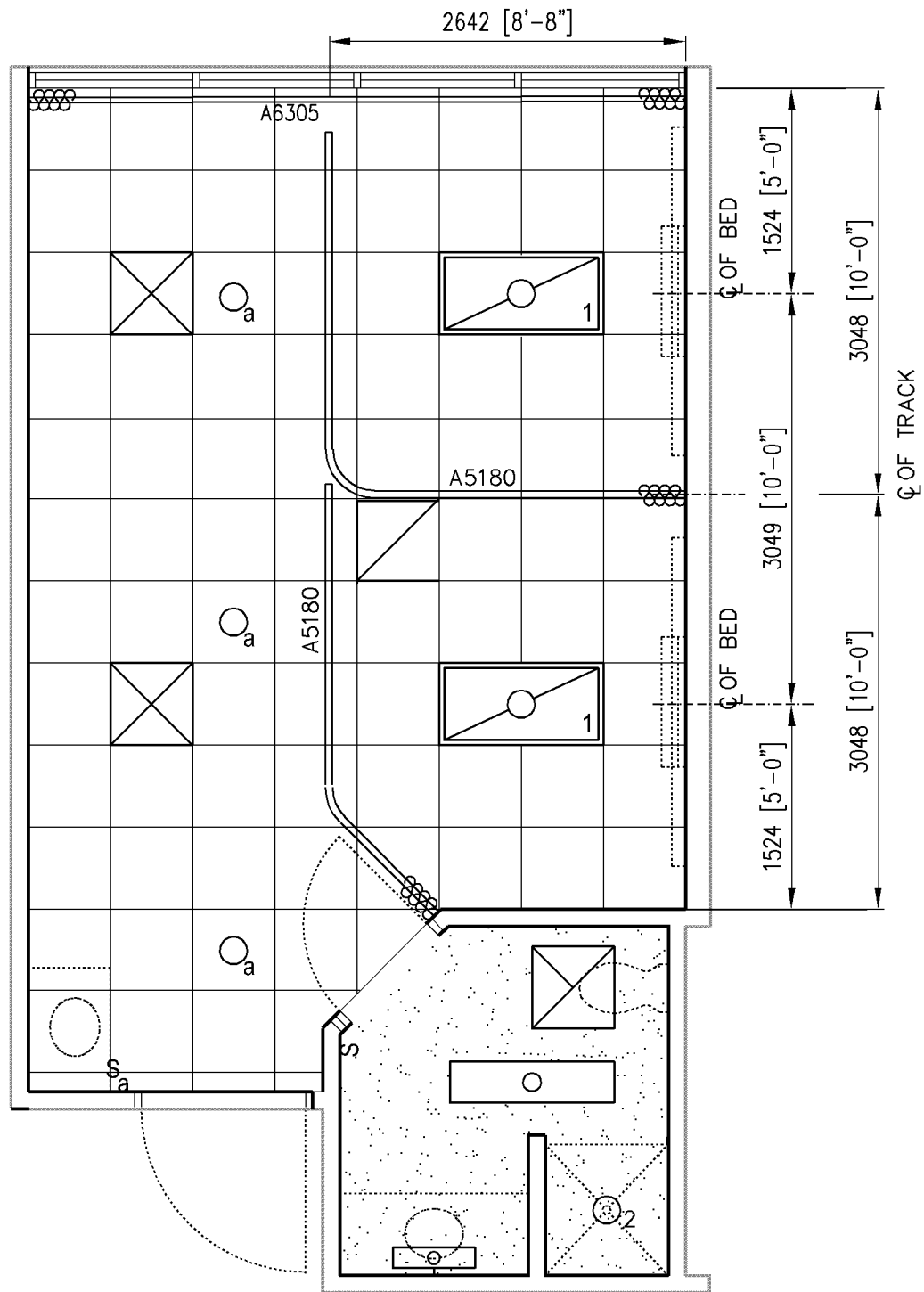
**BEDROOM, MEDICAL/SURGICAL,
2 BEDS (BRMS2)**

4.01.02

NURSING UNIT

FLOOR /EQUIPMENT PLAN 33.4 NSM (359 NSF)

DATE: 04/24/2006



KEY NOTES:

1. CONTROL LIGHTS FROM SWITCH MOUNTED ON HEADWALL
2. USE WET LOCATION TYPE FIXTURE.

BEDROOM, MEDICAL/SURGICAL, 2 BEDS (BRMS2)

4.01.02

NURSING UNIT

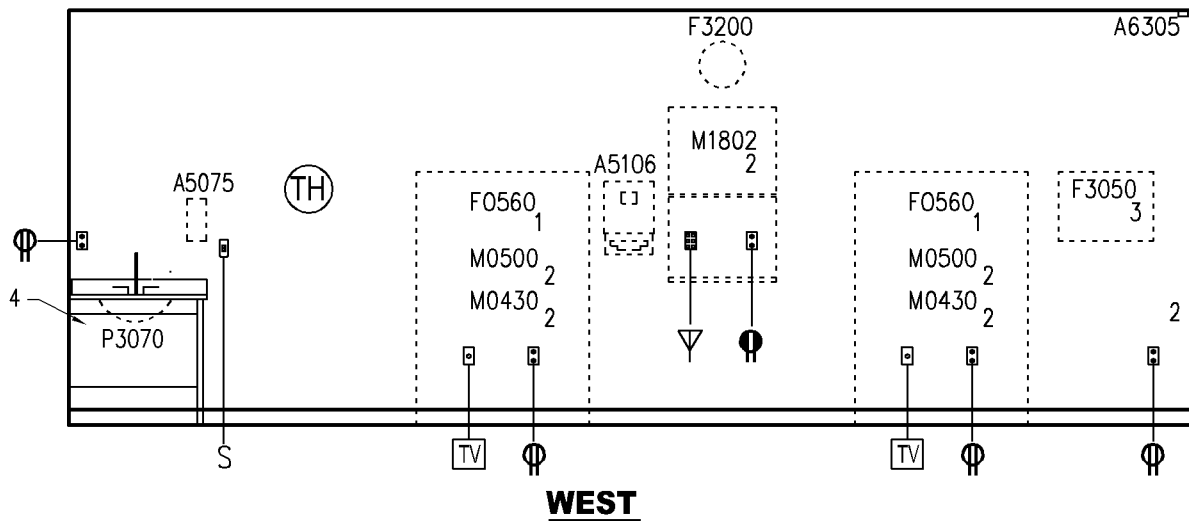
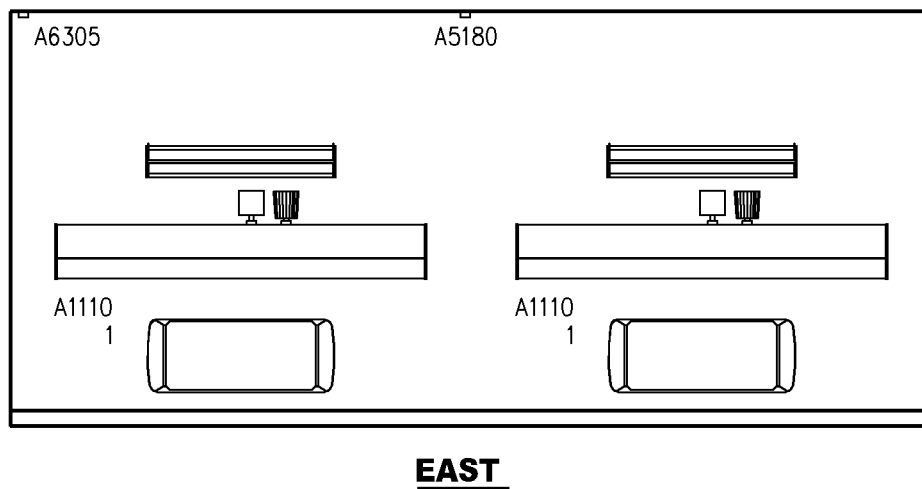
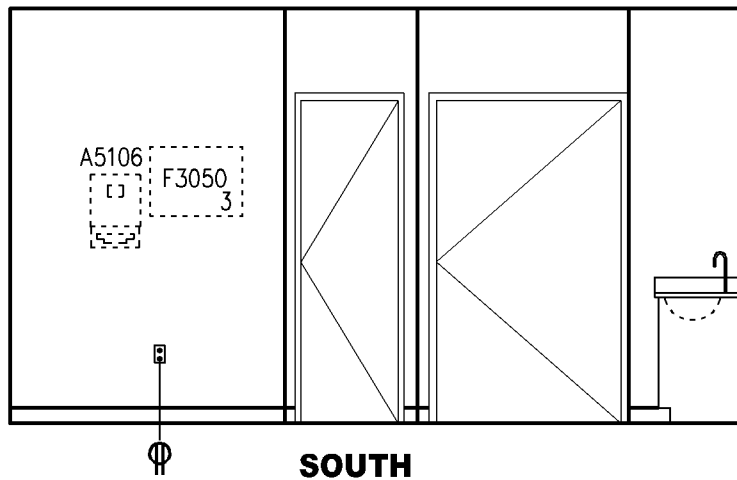
CEILING PLAN

DATE: 04/24/2006

0 1000 2000



1:50 SCALE (MILLIMETERS)



BEDROOM, MEDICAL SURGICAL, 2 BEDS (BRMS2)

4.01.02

NURSING UNIT

ELEVATIONS

DATE: 04/24/2006

0 1000 2000



1:50 SCALE (MILLIMETERS)

NOTES

1. SEE TYPICAL EQUIPMENT MOUNTING HEIGHTS SCHEDULE. SEE SECTION 7.01

KEY NOTES:

1. SEE ELEVATION OF A1110 HEADWALL FOR UTILITIES & ACCESSORIES.
2. M0500 TELEVISION AND M0430 VIDEO RECORDER/PLAYER LOCATED INSIDE ARMOIRE FO560.
3. DRY ERASE BOARD, F3050-18"H x 24"W
4. PROVIDE BUILT IN BASE CABINET TO MATCH ARMOIRE UNIT APPEARANCE.

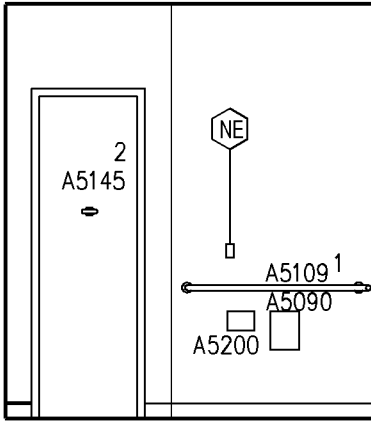
BEDROOM, MEDICAL/SURGICAL, 2 BEDS (BRMS2)

4.01.02

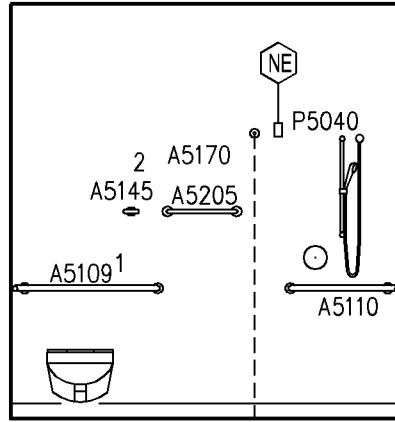
NURSING UNIT

ELEVATIONS

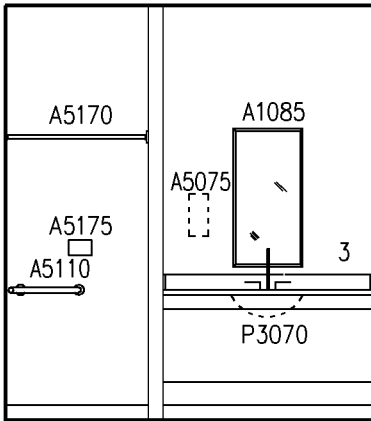
DATE: 04/24/2006



NORTH
(BATHROOM)



EAST
(BATHROOM)



SOUTH
(BATHROOM)

NOTES

1. SEE TYPICAL EQUIPMENT MOUNTING HEIGHTS SCHEDULE. SEE SECTION 7.01

KEY NOTES:

1. PROVIDE A5109 GRAB BARS THAT COMPLY WITH ADA.
2. MOUNT A5145 ROBE HOOK 1372 [4'-6"] A.F.F.
3. BUILT IN COUNTER TOP

**BEDROOM, MEDICAL/SURGICAL,
2 BEDS (BRMS2-TLTS2)**

4.01.02

NURSING UNIT

ELEVATIONS

DATE: 04/24/2006

0 1000 2000



1:50 SCALE (MILLIMETERS)

Medical Equipment Room Guide Plates

4.01 Nursing Unit

Plate Number 4.01.02

Room Name: Bedroom, Medical/Surgical, 2 Beds

SEPS# BRMS2

JSN	Nomenclature	Qty	Army	Navy	Utilities						
			Cat	Cat	AF Cat	1	2	3	4	5	6
A1110	Headwall, Prefabricated, General 1-2 beds	2	A	A	A	.	F	G	.	.	.
A5075	Dispenser, Soap, Disposable	1	C	C	C
A5080	Dispenser, Paper Towel, SS, Surface Mounted	1	A	A	A
A5106	Waste Disposal Unit, Sharps w/Glove Dispenser	2	C	C	C
A5180	Track, Cubicle, Surface mounted, With Curtain	2	A	A	A
A6305	Drapes, Pair	1	C	C	C
F0260	Chair, High Back, Patient	2	C	C	C
F0355	Footstool, Straight	2	C	C	C
F0400	Cabinet, Bedside, Door, Drawer	2	C	C	C
F0560	Wardrobe, television	2	C	C	C
F2000	Basket, Wastepaper, Round, Metal, 18 H x 16 Dia	3	C	C	C
F3050	Board,/Marker, Metal Framed	2	A	A	A
F3200	Clock, Battery, 12 " Diameter	1	C	C	C
M0430	Recorder / Player, Cassette, Video	2	C	C	C	.	A
M0500	Television, Color, 20" Diagonal	2	C	C	C	.	A	F	.	.	.
M0750	Flowmeter, Air, Connect w/50 PSI Supply	2	C	C	C	.	.	A	.	.	.
M0755	Flowmeter, Oxygen, Low Flow	2	C	C	C	.	.	E	.	.	.
M0765	Regulator, Vacuum	4	C	C	C
M1802	Work Station, Computer, Retractable, Wall Mounted	1	C	C	C	.	A
M3072	Frame, Infectious Waste Bag w/Lid	1	C	C	C
M4100	Sphygmomanometer, Aneroid, Headwall Mounted	2	C	C	C
M4255	Stand, IV, adjustable	2	C	C	C
M4266	Pump, Volumetric, Infusion, Multiple Line	2	C	C	C	.	A
M7010	Bed, Patient, Electric	2	C	C	C	.	A
M7040	Table, Overbed	2	C	C	C
P3070	Lavatory, Vitreous China, Under Countertop Mounted	1	A	A	A	D

Medical Equipment Room Guide Plates

4.01 Nursing Unit

Plate Number 4.01.02

Room Name: Dedroom, Medical/Surgical, 2 Beds (TLTS2)

SEPS# BRMS2

JSN	Nomenclature	Qty	Army Cat	Navy Cat	AF Cat	Utilities					
						1	2	3	4	5	6
A1066	Mirror, Float Glass, With SS Frame	1	A	A	A
A5030	Bench, Stall, Shower, Built In	1		A	
A5075	Dispenser, Soap, Disposable	1	C	C	C
A5080	Dispenser, Paper Towel, SS, Surface Mounted	1	A	A	A
A5090	Disposal, Sanitary Napkin, SS, Surface Mounted	1	A	A	A
A5109	Grab Bar, 1-1/4" Dia., SS, 2 Wall, W/C Accessible	1	A	A	A
A5110	Grab bar, 1-1/4" Dia., SS, 2 wall, Shower Use	1	A	A	A
A5145	Hook, Garment, Double, SS, Surface Mounted	2	A	A	A
A5170	Rod, Shower Curtain, 1" Diameter, W/Curtain & Hooks	1	A	A	A
A5175	Soap Dish, With Bar, SS, Recessed	1	A	A	A
A5200	Dispenser, Toilet Tissue, SS, 2-Roll, Surface Mounted	1	A	A	A
A5205	Bar, Towel, 1" Diameter, SS, Surface Mounted	1	A	A	A
F2000	Basket, Wastepaper, Round, Metal	1	C	C	C
P3070	Lavatory, Vitreous China, Under Countertop Mounted	1	A	A	A	D
P5040	Shower, Single, Hand-Held	1	A	A	A	D
P9050	Toilet, Wall Hung, Siphon Jet	1	A	A	A	B