

OUTPATIENT, DERMATOLOGY UV BOOTH

KEY NOTES

1. MOUNT A5145, HOOK, AT 1372 [4'-6"] AFF.
2. INCREASE THIS DIMENSION AS NEEDED TO COMPLY WITH ADA IF THE DOOR HAS A CLOSER OR IF 610 [2'-0"] CLEARANCE IS NOT AVAILABLE AT THE STRIKE SIDE OF THE DOOR.
3. COORDINATE LOCATION OF M1620, PATIENT CHART HOLDER, AND ROOM SIGNAGE.
4. LENGTH OF E1500, WALL MOUNTED RAIL, TO BE DETERMINED BY MANUFACTURER/INSTALLER.
5. MOUNT A5145, HOOK, AT 1219 [4'-0"] AFF. PROVIDE 2-A5145'S FOR NAVY PROJECTS ONLY. MOUNT 1-A5145 AT 1219 [4'-0"] AFF AND 1-A5145 AT 1524 [5'-0"] AFF.
6. P3200, ELECTRONIC LAVATORY, MAY BE USED INSTEAD OF P3100, LAVATORY. FOR THE P3200 PROVIDE EITHER BATTERY POWER OR HARD WIRED CONNECTION.
7. COORDINATE LOCATIONS OF ELECTRICAL AND DATA OUTLETS WITH M1802, WALL MOUNTED, FOLD DOWN COMPUTER.

OUTPATIENT
DERMATOLOGY, UV BOOTH (OPDU1)

SPECIALTY MEDICAL CLINICS

FLOOR/EQUIPMENT PLAN

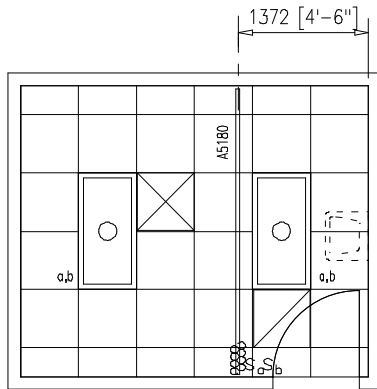
11.15 NSM (120 NSF)

0 1000 2000



DATE: 01/28/2002

1:50 SCALE (MILLIMETERS)



OUTPATIENT
DERMATOLOGY, UV BOOTH (OPDU1)

SPECIALTY MEDICAL CLINICS

CEILING PLAN

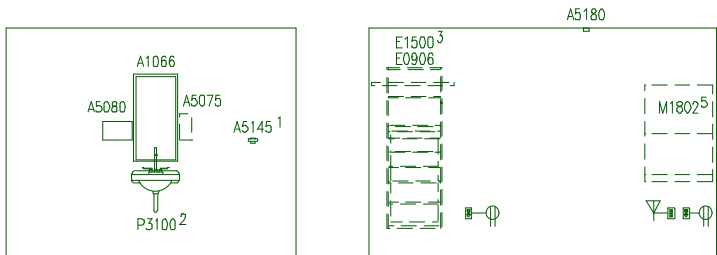
DATE: 01/28/2002

11.15 NSM (120 NSF)

0 1000 2000

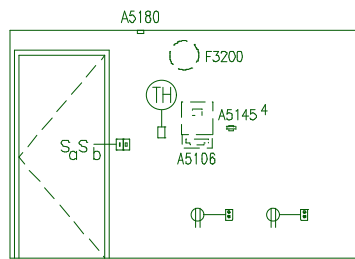


1:50 SCALE (MILLIMETERS)



EAST

NORTH



SOUTH

General Notes:

1. For typical equipment mounting heights see "TYPICAL EQUIPMENT MOUNTING HEIGHTS" drawing.
2. MIL-STD-1691 data can only be accessed from the Equipment Plan.

KEY NOTES

1. MOUNT A5145, HOOK, AT 1219 [4'-0"] AFF. PROVIDE 2-A5145'S FOR NAVY PROJECTS ONLY. MOUNT 1-A5145 AT 1219 [4'-0"] AFF AND 1-A5145 AT 1524 [5'-0"] AFF.
2. P3200, ELECTRONIC LAVATORY, MAY BE USED INSTEAD OF P3100, LAVATORY. FOR THE P3200 PROVIDE EITHER BATTERY POWER OR HARD WIRED CONNECTION.
3. LENGTH OF E1500, WALL MOUNTED RAIL, TO BE DETERMINED BY MANUFACTURER/INSTALLER.
4. MOUNT A5145, HOOK, AT 1372 [4'-6"] AFF.
5. COORDINATE LOCATIONS OF ELECTRICAL AND DATA OUTLETS WITH M1802, WALL MOUNTED, FOLD DOWN COMPUTER.

OUTPATIENT
DERMATOLOGY, UV BOOTH (OPDU1)

SPECIALTY MEDICAL CLINICS

ELEVATIONS

DATE: 01/28/2002

11.15 NSM (120 NSF)

0 1000 2000



1:50 SCALE (MILLIMETERS)

Project Rooms (User Contents Only)

As of 08/12/2005

Page 1

Room Code: OPDU1 Room Qty: 1 Room Area: 119.97 Room Description: OUTPATIENT, DERMATOLOGY UV BOOTH

| JSN | NOMENCLATURE | Qty | UNIT | LOG | Ut1 | Ut1 | Ut1 | Ut1 | Ut1 | Ut1 |
|-----|--------------|-----|-------|-----|-----|-----|-----|-----|-----|-----|
| | | | ISSUE | CAT | 1 | 2 | 3 | 4 | 5 | 6 |

Equipment per Room:

| | | | | | | | | | | |
|-------|--|---|----|---|---|---|---|---|---|---|
| A1066 | Mirror, Float Glass, With SS Frame, 36X18 | 1 | EA | A | . | . | . | . | . | . |
| A5075 | Dispenser, Soap, Disposable | 1 | EA | C | . | . | . | . | . | . |
| A5080 | Dispenser, Paper Towel, SS, Surface Mounted | 1 | EA | A | . | . | . | . | . | . |
| A5106 | Waste Disposal Unit, Sharps w/Glove Dispenser | 1 | EA | C | . | . | . | . | . | . |
| A5145 | Hook, Garment, Double, SS, Surface Mounted | 2 | EA | A | . | . | . | . | . | . |
| A5180 | Track, Cubicle, Surface Mounted, With Curtain | 1 | FT | A | . | . | . | . | . | . |
| E0906 | Locker, Supply, General, Wall Mtd, 23"W x 20"D | 1 | EA | C | . | . | . | . | . | . |
| E1500 | Rail, MOD, W/MNTD, HX144XD | 1 | EA | C | . | . | . | . | . | . |
| F0205 | Chair, Side With Arms | 1 | EA | C | . | . | . | . | . | . |
| F0285 | Chair, Secretarial, Tilt Back, Adjustable Height | 1 | EA | C | . | . | . | . | . | . |
| F2000 | Basket, Wastepaper, Round, Metal, 18 H x 16 Dia. | 1 | EA | C | . | . | . | . | . | . |
| F3200 | Clock, Battery, 12" Diameter | 1 | EA | C | . | . | . | . | . | . |
| M1620 | Holder, Chart, Patient, Wall or Door Mounted | 1 | EA | A | . | . | . | . | . | . |
| M1802 | Work Station, Computer, Retractable, Wall Mount | 1 | EA | C | . | G | . | . | . | D |
| M3070 | Hamper, Linen, Mobile, w/Lid | 1 | EA | C | . | . | . | . | . | . |
| M3072 | Frame, Infectious Waste Bag w/Lid | 1 | EA | C | . | . | . | . | . | . |
| M7410 | Light, Exam, Ultraviolet (Woods) | 1 | EA | C | . | A | . | . | . | . |
| M8190 | Booth, Treatment, Ultraviolet | 1 | EA | C | . | D | . | . | . | A |
| M8192 | Booth, Treatment, Ultraviolet, Hand-Foot | 1 | EA | C | . | A | . | . | . | . |
| P3100 | Lavatory, Vitreous China, Slab Type | 1 | EA | A | D | . | . | . | . | . |

=====

GRAND TOTAL

21