

NBC DECONTAMINATION CENTER (NBCD1)

EMERGENCY SERVICES

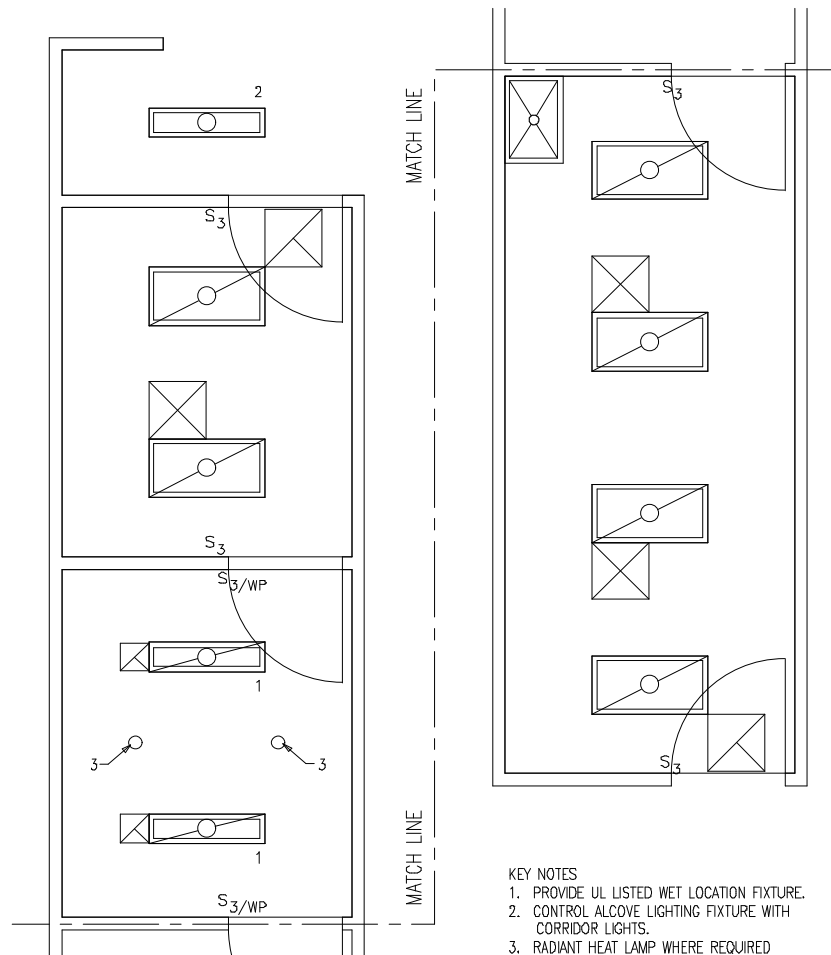
FLOOR/EQUIPMENT PLAN

47.26 NSM (509 NSF)

DATE: 01/28/2002

0 1000 2000

1:50 SCALE (MILLIMETERS)



- KEY NOTES
1. PROVIDE UL LISTED WET LOCATION FIXTURE.
 2. CONTROL ALCOVE LIGHTING FIXTURE WITH CORRIDOR LIGHTS.
 3. RADIANT HEAT LAMP WHERE REQUIRED BASED ON HEAT LOSS.

NBC DECONTAMINATION CENTER (NBCD1)

EMERGENCY SERVICES

CEILING PLAN

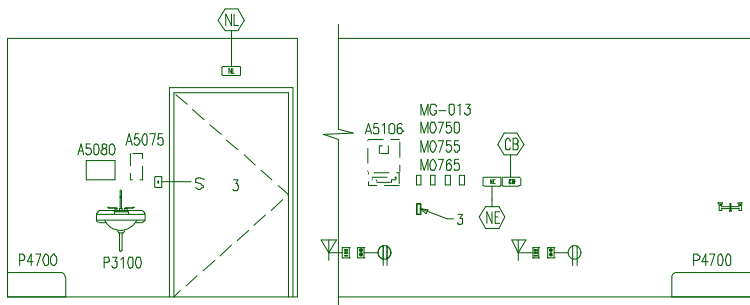
DATE: 01/28/2002

47.26 NSM (509 NSF)

0 1000 2000

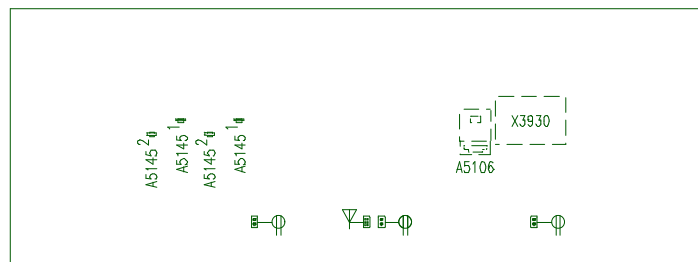


1:50 SCALE (MILLIMETERS)



NORTH (TREATMENT/STORAGE) ⁴

WEST (TREATMENT/STORAGE) ⁴



EAST (TREATMENT/STORAGE) ⁴

NOTES

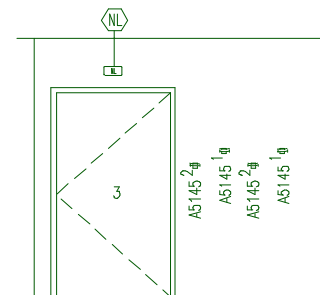
1. ROOM SHAPES AND CONFIGURATION MAY VARY DEPENDING UPON BUILDING DESIGN.

KEY NOTES

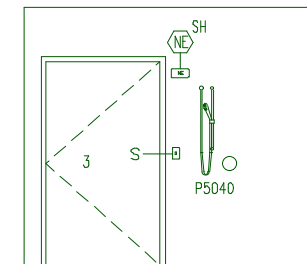
1. MOUNT A5145, HOOK, AT 1524 [5'-0"] AFF.
2. MOUNT A5145, HOOK, AT 1372 [4'-0"] AFF.
3. VACUUM SLIDE.
4. TREATMENT NOT REQUIRED FOR ARMY PROJECTS.

General Notes:

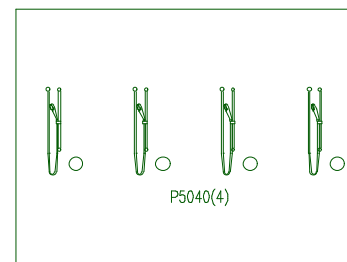
1. For typical equipment mounting heights see "TYPICAL EQUIPMENT MOUNTING HEIGHTS" drawing.
2. MIL-STD-1691 data can only be accessed from the Equipment Plan.



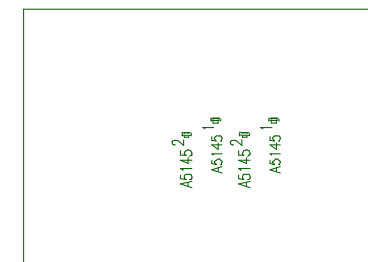
SOUTH (EXTERIOR ALCOVE)



SOUTH (SHOWER)
NORTH OPPOSITE HAND



WEST (SHOWER)



EAST (SHOWER)

NOTES

1. ROOM SHAPES AND CONFIGURATION MAY VARY DEPENDING UPON BUILDING DESIGN.

KEY NOTES

1. MOUNT A5145, HOOK, AT 1524 [5'-0"] AFF.
2. MOUNT A5145, HOOK, AT 1372 [4'-0"] AFF.
3. PROVIDE 1219 [4'-0"] WIDE DOOR.

NBC DECONTAMINATION CENTER (NBCD1)

EMERGENCY SERVICES

ELEVATIONS

47.26 NSM (509 NSF)

DATE: 01/28/2002

0 1000 2000

1:50 SCALE (MILLIMETERS)

Project Rooms (User Contents Only)

As of 07/27/2005

Page 1

Room Code: NBCD1 Room Qty: 1 Room Area: 508.67 Room Description: NBC DECON CENTER

JSN	NOMENCLATURE	Qty	UNIT ISSUE	LOG CAT	Utl 1	Utl 2	Utl 3	Utl 4	Utl 5	Utl 6
-----	--------------	-----	---------------	------------	----------	----------	----------	----------	----------	----------

Equipment per Room:

A5025	Bench, Locker Room, Portable	2	EA	C
A5075	Dispenser, Soap, Disposable	1	EA	C
A5080	Dispenser, Paper Towel, SS, Surface Mounted	1	EA	A
A5106	Waste Disposal Unit, Sharps w/Glove Dispenser	4	EA	C
A5145	Hook, Garment, Double, SS, Surface Mounted	12	EA	A
E0954	Cart, Emergency, Mobile, 66"H x 52"W x 22"D	1	EA	C
E0987	Cart, Closed, Towable, 74"H x 68"W x 30"D	1	EA	C
F2020	Can, Trash, 44 Gallon	4	EA	C
M0750	Flowmeter, Air, Connect w/50 PSI Supply	1	EA	C	.	.	K	.	.	.
M0755	Flowmeter, Oxygen, Low Flow	1	EA	C	.	.	A	.	.	.
M0765	Regulator, Vacuum	1	EA	C	.	.	B	.	.	.
M2050	Shelving, Storage, 75"H X 36"W X 14"D	2	EA	C
M2100	Cart, Shelving, Storage, Mobile, SS	1	EA	C
M3070	Hamper, Linen, Mobile, w/Lid	2	EA	C
M3072	Frame, Infectious Waste Bag w/Lid	3	EA	C
M4255	Stand, IV, Adjustable	1	EA	C
M4655	Stretcher, Mobile, CRS, 9 Position	1	EA	C
M4657	Tabletop, Decontamination	1	Ea	C
M7660	Defibrillator/Monitor/Recorder, Portable	1	EA	C	.	A
M8810	Stand, Mayo	1	EA	C
P3100	Lavatory, Vitreous China, Slab Type	1	EA	A	D
P4700	Sink, Mop, Molded Stone, 10x36x24	1	EA	A	D
P5040	Shower, Single, Hand-Held	6	EA	A	D
X3930	Illuminator, Film, Double, Wall Mounted, 20x29x6	1	EA	C	.	A

GRAND TOTAL

51