

NOTES

1. THIS ROOM IS NOT FOR TEACHING FACILITIES.

KEY NOTES

1. ALL CABINETS SHALL BE STAINLESS STEEL.
2. L5218, AUTOPSY SCALE, MAY BE LOCATED OUTSIDE THIS ROOM.
3. COORDINATE LOCATIONS OF ELECTRICAL AND DATA OUTLETS WITH M1802, WALL MOUNTED, FOLD DOWN COMPUTER.
4. MOUNT A5145, HOOK, AT 1372 [4'-6"] AFF. PROVIDE 2-A5145'S FOR NAVY PROJECTS ONLY. MOUNT 1-A5145 AT 1372 [4'-6"] AFF AND 1-A5145 AT 1524 [5'-0"] AFF.
5. FLUSH RIM FLOOR SINK WITH TRAP PRIMER AND HINGED COVER.

LAB, AUTOPSY ROOM (LBAR1)

PATHOLOGY

FLOOR/EQUIPMENT PLAN

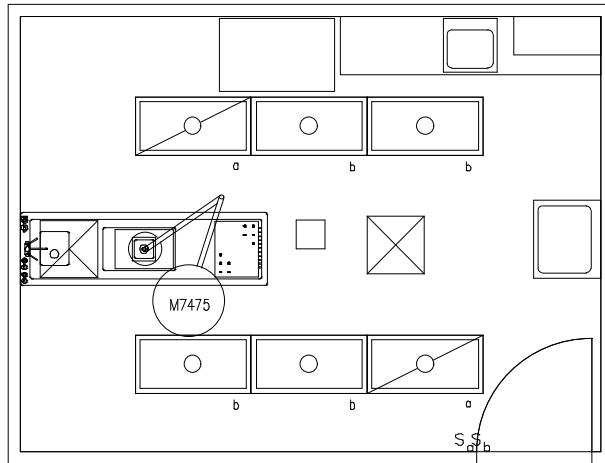
27.87 NSM (300 NSF)

DATE: 01/28/2002

0 1000 2000



1:50 SCALE (MILLIMETERS)



NOTES

1. THIS ROOM IS NOT FOR TEACHING FACILITIES.

LAB, AUTOPSY ROOM (LBAR1)

PATHOLOGY

CEILING PLAN

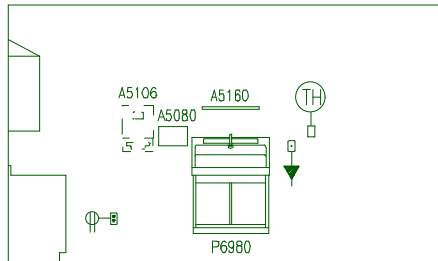
DATE: 01/28/2002

27.87 NSM (300 NSF)

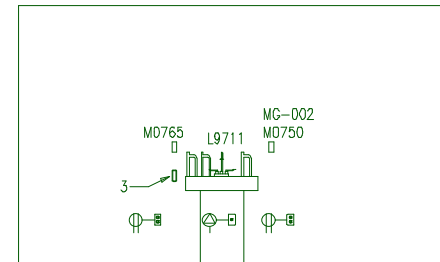
0 1000 2000



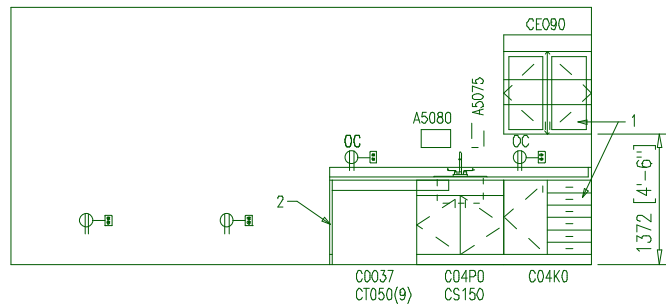
1:50 SCALE (MILLIMETERS)



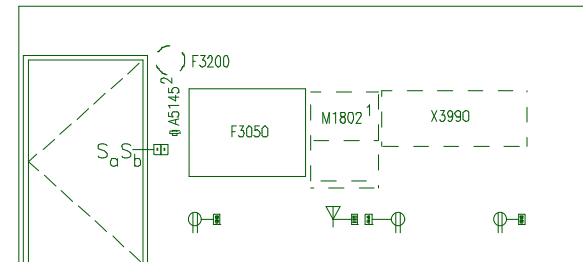
EAST



WEST



NORTH



SOUTH

KEY NOTES

1. ALL CABINETS SHALL BE STAINLESS STEEL.
2. END PANEL.

General Notes:

1. For typical equipment mounting heights see "TYPICAL EQUIPMENT MOUNTING HEIGHTS" drawing.
2. MIL-STD-1691 data can only be accessed from the Equipment Plan.

KEY NOTES

1. COORDINATE LOCATIONS OF ELECTRICAL AND DATA OUTLETS WITH M1802, WALL MOUNTED, FOLD DOWN COMPUTER.
2. MOUNT A5145, HOOK, AT 1372 [4'-6"] AFF. PROVIDE 2-A5145'S FOR NAVY PROJECTS ONLY. MOUNT 1-A5145 AT 1372 [4'-6"] AFF AND 1-A5145 AT 1524 [5'-0"] AFF.
3. VACUUM SLIDE.

LAB, AUTOPSY ROOM (LBAR1)

PATHOLOGY

FLOOR/EQUIPMENT PLAN

27.87 NSM (300 NSF)

DATE: 01/28/2002

0 1000 2000



1:50 SCALE (MILLIMETERS)

Project Rooms (User Contents Only)

As of 06/10/2005

Page 1

Room Code: LBAR1 Room Qty: 1 Room Area: 299.98 Room Description: LAB, AUTOPSY ROOM

JSN	NOMENCLATURE	Qty	UNIT ISSUE	LOG CAT	Utl 1	Utl 2	Utl 3	Utl 4	Utl 5	Utl 6
Equipment per Room:										
A5075	Dispenser, Soap, Disposable	1	EA	C
A5080	Dispenser, Paper Towel, SS, Surface Mounted	2	EA	A
A5106	Waste Disposal Unit, Sharps w/Glove Dispenser	1	EA	C
A5145	Hook, Garment, Double, SS, Surface Mounted	1	EA	A
A5160	Shelf, 8" Depth, SS, Surface Mounted	1	EA	A
C0037	Rail, Apron, 4x36x1	1	EA	A
C04K0	Cabinet, U/C/B, 1 Shelf, 6 Half DR, 1 DO, 36x36x	1	EA	A
C04P0	Cabinet, Sink, U/C/B, 2 Door, 36x36x22	1	EA	A
CE090	Cabinet, W/H, 2 SH, 2 GDO, Sloping Top, 41x36x16	1	EA	A
CS150	Sink, SS, Single Compartment, 10x19x16 ID	1	EA	A	D
CT050	Countertop, Stainless Steel	9	LF	A
F0340	Stool, Self Adjusting	1	EA	C
F0355	Footstool, Straight	1	EA	C
F2000	Basket, Wastepaper, Round, Metal, 18 H x 16 Dia.	2	EA	C
F2460	Dictation Unit, Standalone	1	EA	C	.	A
F3050	Whiteboard, Dry Erase, 36 x 48	1	EA	A
F3200	Clock, Battery, 12" Diameter	1	EA	C
L5218	Scale, Autopsy	1	EA	C
L9711	Table, Autopsy, Stationary-Fixed-Height	1	EA	A	D	A
L9720	Station, Pathology, Gross	1	EA	A	D	F
M0750	Flowmeter, Air, Connect w/50 PSI Supply	1	EA	C	.	.	K	.	.	.
M0765	Regulator, Vacuum	1	EA	C	.	.	B	.	.	.
M1802	Work Station, Computer, Retractable, Wall Mount	1	EA	C	.	G	.	.	.	D
M2070	Shelving, Storage, 77hx36wx18d	1	EA	C
M3072	Frame, Infectious Waste Bag w/Lid	2	EA	C
M7475	Light, Surgical, Ceiling Mounted, Single, Large	1	EA	A	.	F
M8810	Stand, Mayo	1	EA	C
P6980	Sink, Scrub, SS, 1-3 Bay, With Knee Valve	1	EA	A	D	B
X3990	Illuminator, Film, 4 Panels, Wall Mounted	1	EA	C	.	A

=====

GRAND TOTAL

40