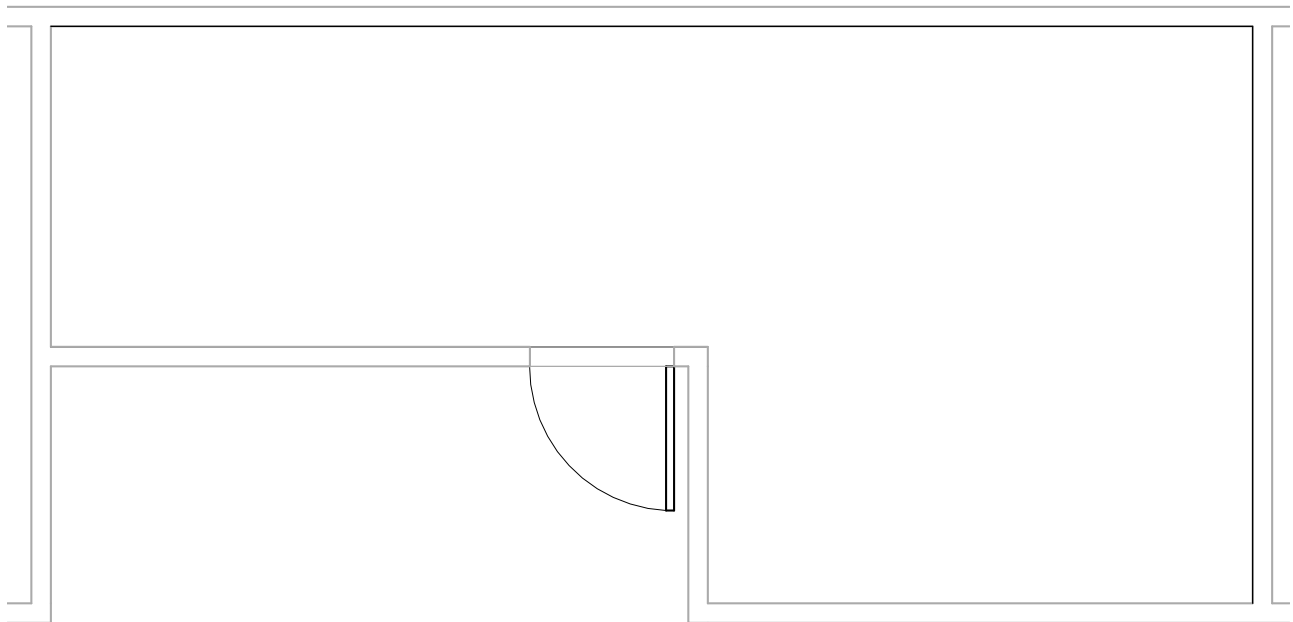
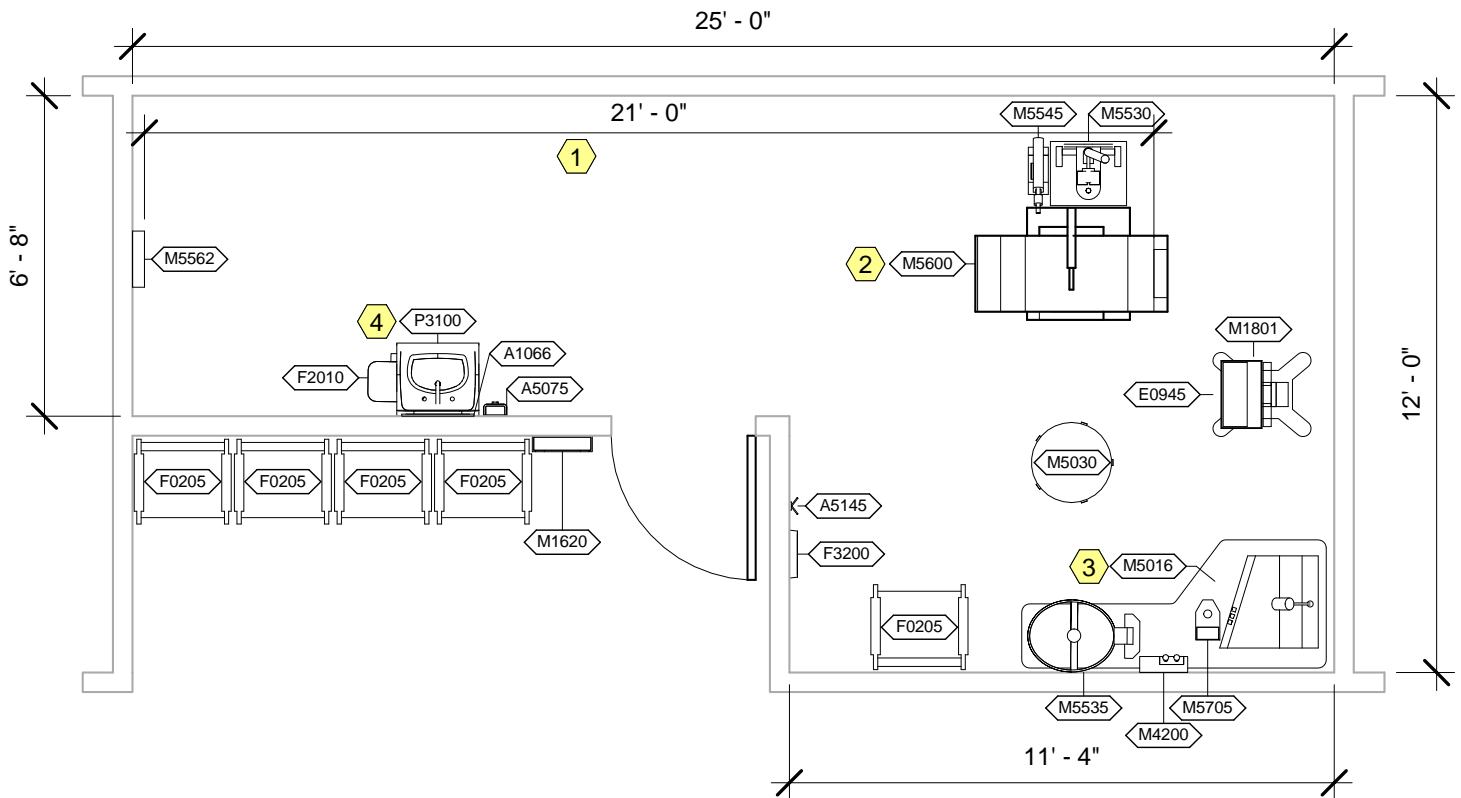


<b>Room</b> Eyelane (EYEL1) <b>Description:</b> Waiting Room (WRC01)	<b>NSF:</b> 230 70	<b>EYEL1/WRC01</b>	
<b>Sheet</b> <b>Description:</b> Room/Equipment Isometric	<b>Scale:</b>	Sheet <b>1</b>	of <b>6</b>



**EYEL1/WRC01 - CEILING MOUNTED EQUIPMENT PLAN**

<b>Room</b> Eyelane (EYEL1) <b>Description:</b> Waiting Room (WRC01)	<b>NSF:</b> 230 70	<b>EYEL1/WRC01</b>	
<b>Sheet</b> <b>Description:</b> Ceiling Mounted Equipment Plan	<b>Scale:</b> 1/4" = 1'-0"	Sheet <b>2</b>	of <b>6</b>



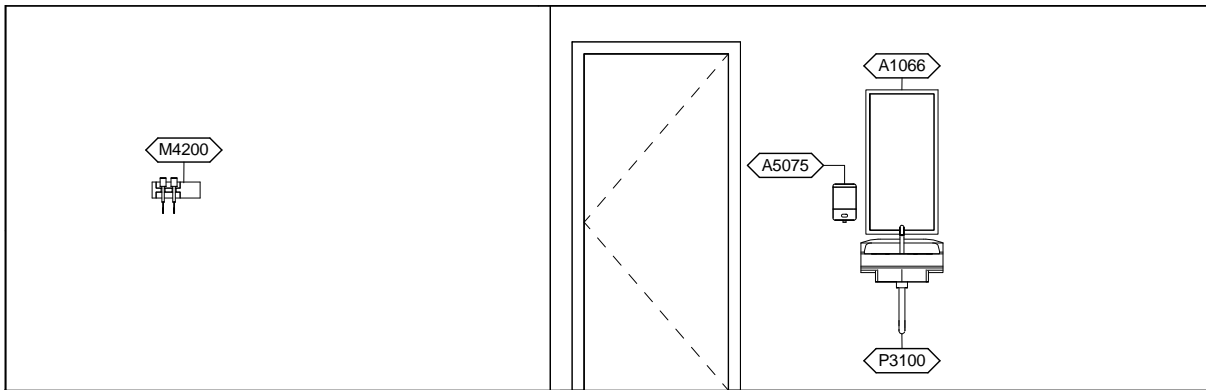
EYEL1/WRC01 - NOTES

- 1 Coordinate JSN M5562, Tester, Visual Acuity, with JSN M5600, Unit, Exam, Eye, to assure a straight line distance of 21'-0" from face of the screen, JSN M5562, Tester, Visual Acuity, to the front surface of the headrest, JSN M5600, Unit, Exam, Eye.
- 2 If equipment pole is mounted on the JSN M5016, Desk, Refraction, instead of beside M5600, Unit, Exam, Eye, JSN M5016, Desk, Refraction, may need to be relocated.
- 3 Lighting controls shall be integrated with JSN M5016, Desk, Refraction.
- 4 JSN P8710, Utility Center, shall be included in Navy projects only.

<b>Room</b> Eyelane (EYEL1) <b>Description:</b> Waiting Room (WRC01)	<b>NSF:</b> 230 70	<b>EYEL1/WRC01</b>	
<b>Sheet</b> <b>Description:</b> Equipment Plan	<b>Scale:</b> 1/4" = 1'-0"	Sheet <b>3</b>	of <b>6</b>

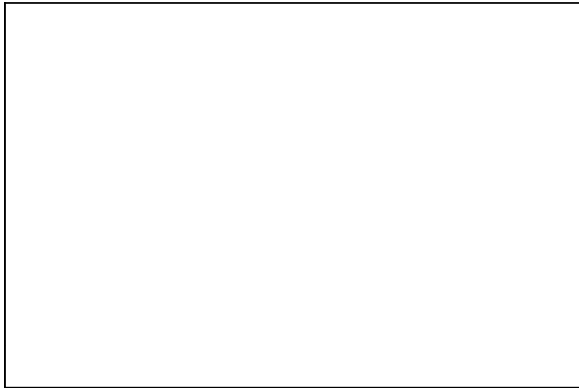


EYEL1 - NORTH ELEVATION

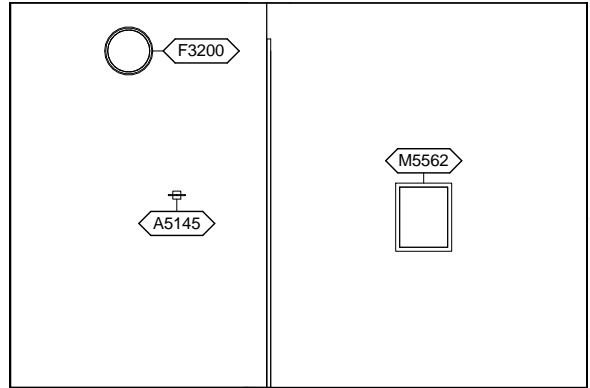


EYEL1 - SOUTH ELEVATION

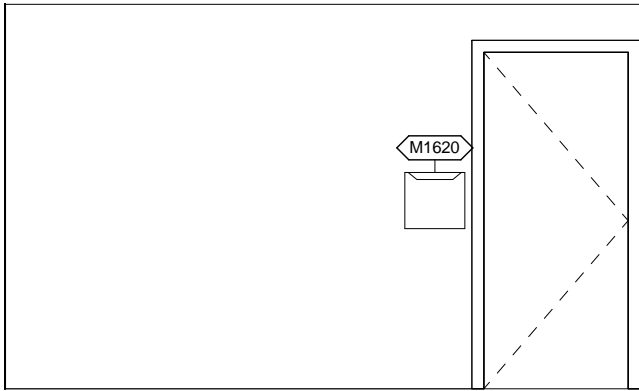
<b>Room</b> Eyelane (EYEL1) <b>Description:</b> Waiting Room (WRC01)	<b>NSF:</b> 230 70	<b>EYEL1/WRC01</b>	
<b>Sheet</b> <b>Description:</b> Interior Room Elevations	<b>Scale:</b> 1/4" = 1'-0"	Sheet <b>4</b>	of <b>6</b>



EYEL1 - EAST ELEVATION



EYEL1 - WEST ELEVATION



WRC01 - NORTH ELEVATION

<b>Room</b> Eyelane (EYEL1) <b>Description:</b> Waiting Room (WRC01)	<b>NSF:</b> 230 70	<b>EYEL1/WRC01</b>	
<b>Sheet</b> <b>Description:</b> Interior Room Elevations	<b>Scale:</b> 1/4" = 1'-0"	Sheet <b>5</b>	of <b>6</b>

EYEL1 - EQUIPMENT SCHEDULE

JSN	Nomenclature	Qty	LF	AR	Logistics			Utilities						
					NA	AF	VA	1	2	3	4	5	6	
A1066	Mirror, Float Glass, With SS Frame	1		A	A	A	A	-	-	-	-	-	-	-
A5075	Dispenser, Soap, Disposable	1		C	C	C	C	-	-	-	-	-	-	-
A5145	Hook, Garment, Double, SS, Surface Mounted	1		A	A	A	A	-	-	-	-	-	-	-
E0945	Mobile, Workstation	1		C	C	C	C	-	-	-	-	-	-	-
F0205	Chair, Side With Arms	1		C	C	C	C	-	-	-	-	-	-	-
F2010	Basket, Wastepaper, Step-On	1		C	C	C	C	-	-	-	-	-	-	-
F3200	Clock, Battery, 12" Diameter	1		C	C	C	C	-	-	-	-	-	-	-
M1620	Holder, Chart, Patient, Wall or Door Mounted	1		A	A	A	A	-	-	-	-	-	-	-
M1801	Computer, Microprocessing, w/Flat Panel Monitor	1		C	C	C	C	-	A	-	-	-	-	-
M4200	Otoscope/Ophthalmoscope, Wall Mounted	1		C	C	-	C	-	A	-	-	-	-	-
M5016	Desk, Refraction w/console, w/o Sink	1		A	E	A	A	-	F	-	-	-	-	-
M5030	Stool, Surgeon, Revolving	1		C	C	C	C	-	-	-	-	-	-	-
M5530	Lamp, Slit, w/Applanation Tonometer	1		C	C	C	C	-	A	-	-	-	-	-
M5535	Ophthalmoscope, Binocular, Indirect	1		C	C	C	C	-	A	-	-	-	-	-
M5545	Ophthalmometer/Keratometer	1		C	C	C	C	-	A	-	-	-	-	-
M5562	Tester, Visual Acuity, Video/Microprocessor Based	1		C	C	C	C	-	A	-	-	-	-	-
M5600	Unit, Exam, Eye, w/Motor Chair, Phoropter	1		C	C	C	C	-	A	-	-	-	-	-
M5705	Gauge, Distance, Pupillary	1		C	C	C	C	-	-	-	-	-	-	-
P3100	Lavatory, Vitreous China, Slab Type	1		A	A	A	A	D	-	-	-	-	-	-

WRC01 - EQUIPMENT SCHEDULE

JSN	Nomenclature	Qty	LF	AR	Logistics			Utilities						
					NA	AF	VA	1	2	3	4	5	6	
F0205	Chair, Side With Arms	4		C	C	C	C	-	-	-	-	-	-	-

<b>Room</b> Eyelane (EYEL1) <b>Description:</b> Waiting Room (WRC01)	<b>NSF:</b> 230 70	<b>EYEL1/WRC01</b>	
<b>Sheet</b> <b>Description:</b> Equipment Schedule	<b>Scale:</b>	Sheet <b>6</b>	of <b>6</b>