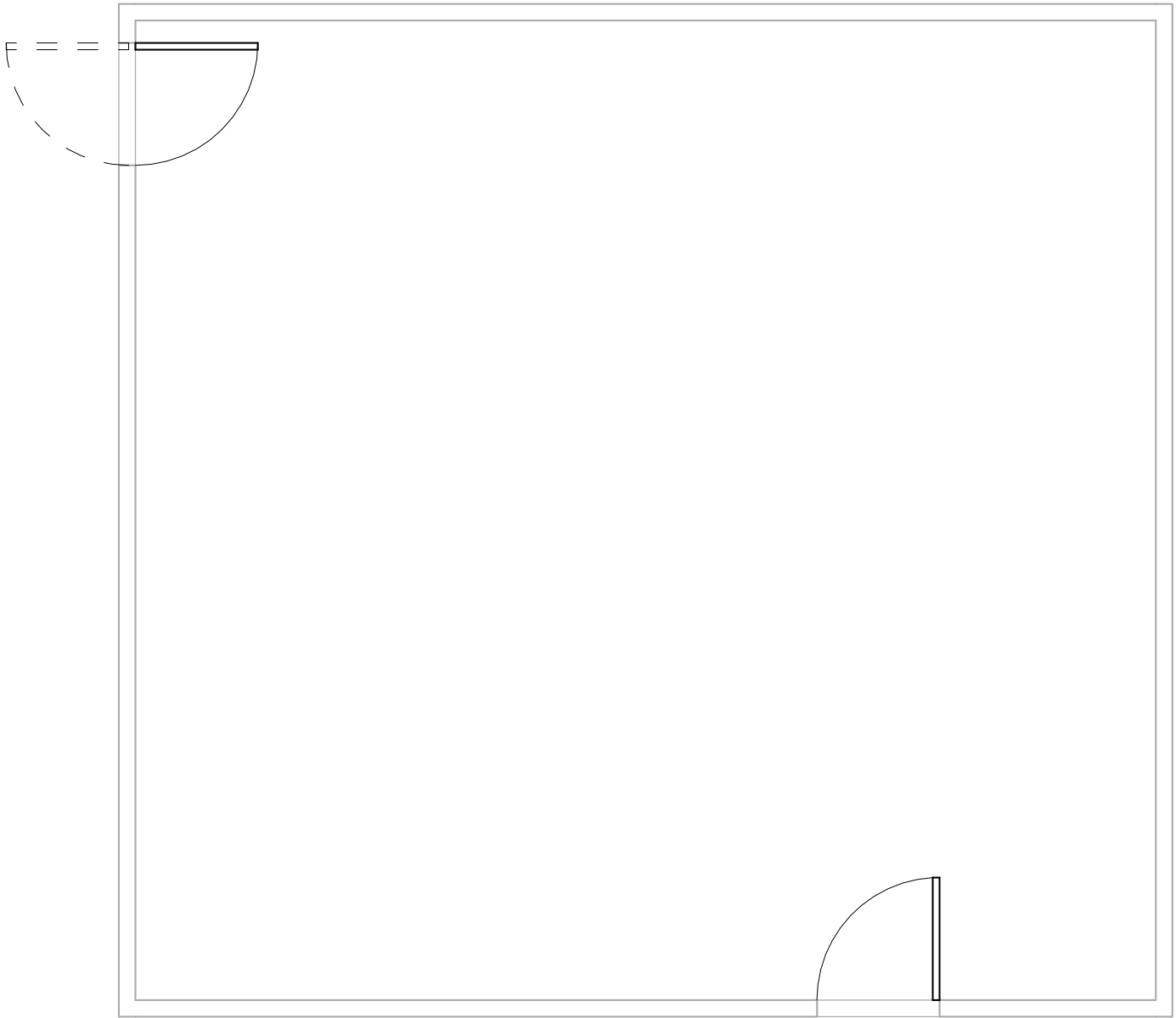
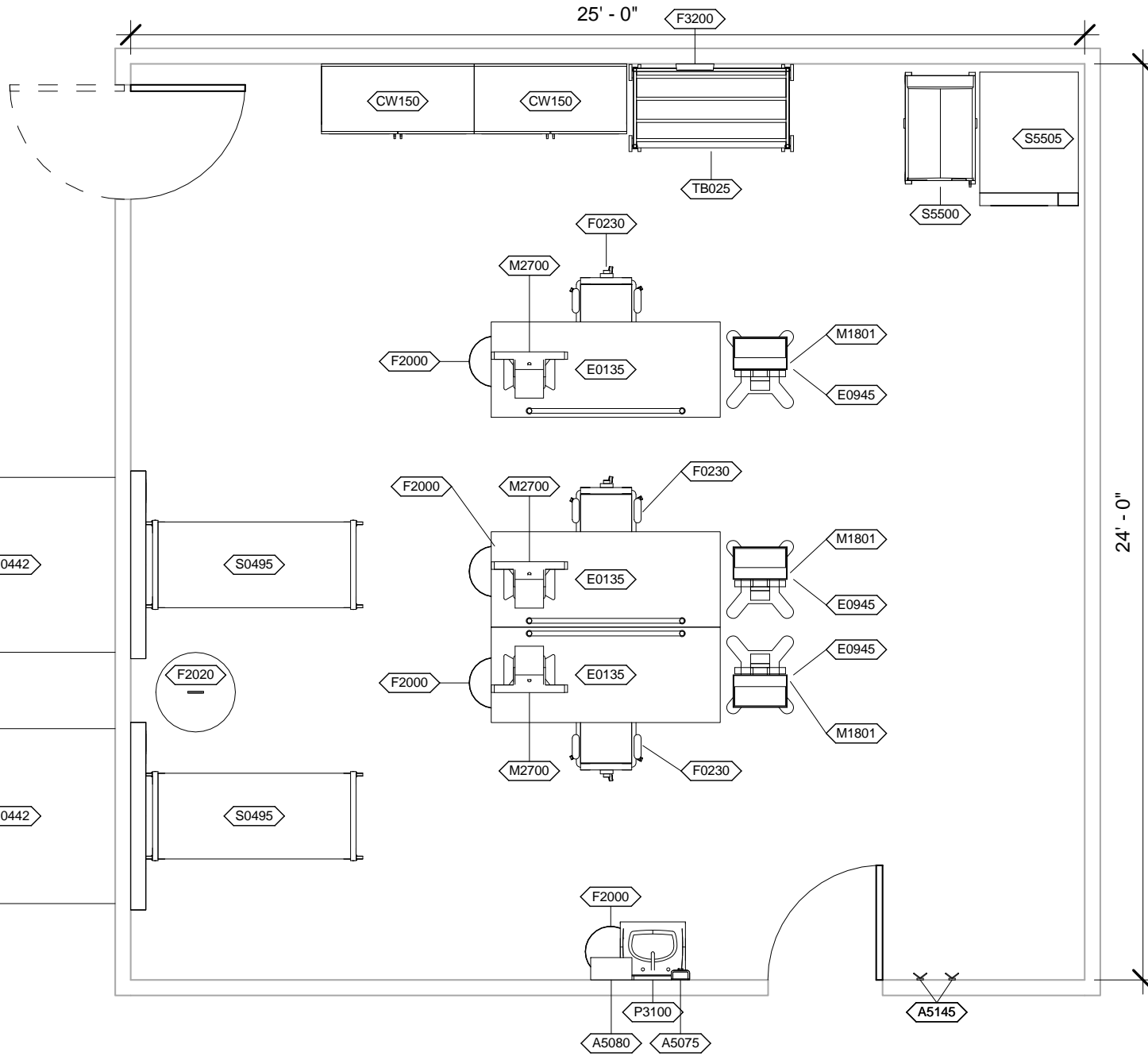


<b>Room Description:</b> Workroom, Sterile Processing, Clean Instrument Assembly (CSIA2)	<b>NSF:</b> 600	<b>CSIA2</b>	
<b>Sheet Description:</b> Room/Equipment Isometric	<b>Scale:</b>	Sheet <b>1</b>	of <b>7</b>

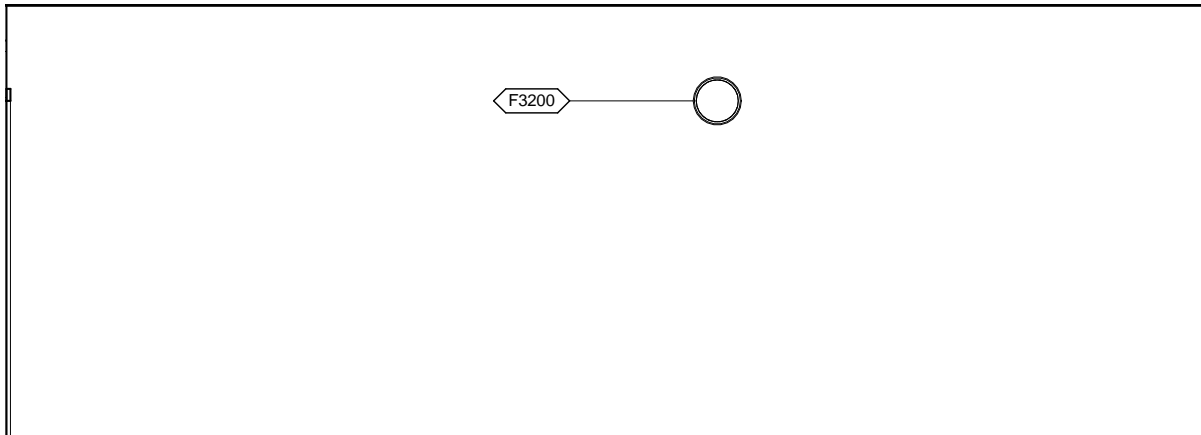


**CSIA2 - CEILING MOUNTED EQUIPMENT PLAN**

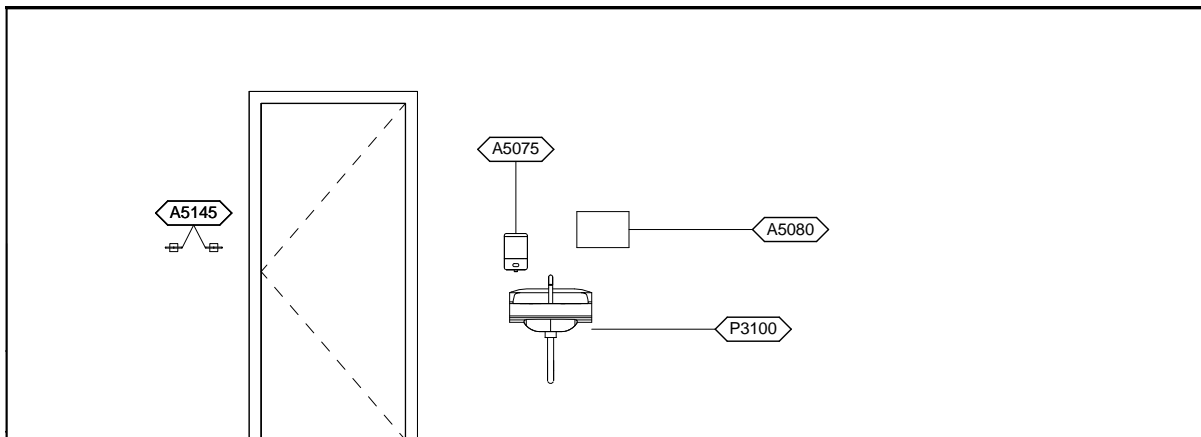
<b>Room Description:</b> Workroom, Sterile Processing, Clean Instrument Assembly (CSIA2)	<b>NSF:</b> 600	<b>CSIA2</b>	
<b>Sheet Description:</b> Ceiling Mounted Equipment Plan	<b>Scale:</b> 1/4" = 1'-0"	Sheet <b>2</b>	of <b>7</b>



<b>Room Description:</b> Workroom, Sterile Processing, Clean Instrument Assembly (CSIA2)	<b>NSF:</b> 600	<b>CSIA2</b>	
<b>Sheet Description:</b> Equipment Plan	<b>Scale:</b> 1/4" = 1'-0"	Sheet <b>3</b>	of <b>7</b>



CSIA2 - NORTH ELEVATION

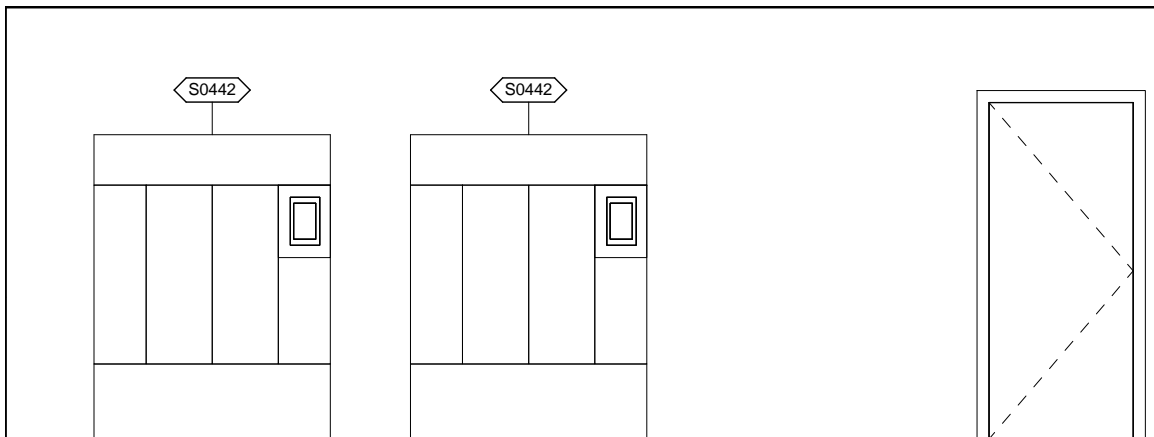


CSIA2 - SOUTH ELEVATION

<b>Room Description:</b> Workroom, Sterile Processing, Clean Instrument Assembly (CSIA2)	<b>NSF:</b> 600	<h1>CSIA2</h1>	
<b>Sheet Description:</b> Interior Room Elevations	<b>Scale:</b> 1/4" = 1'-0"	Sheet <h2>4</h2>	of <h2>7</h2>



**CSIA2 - EAST ELEVATION**



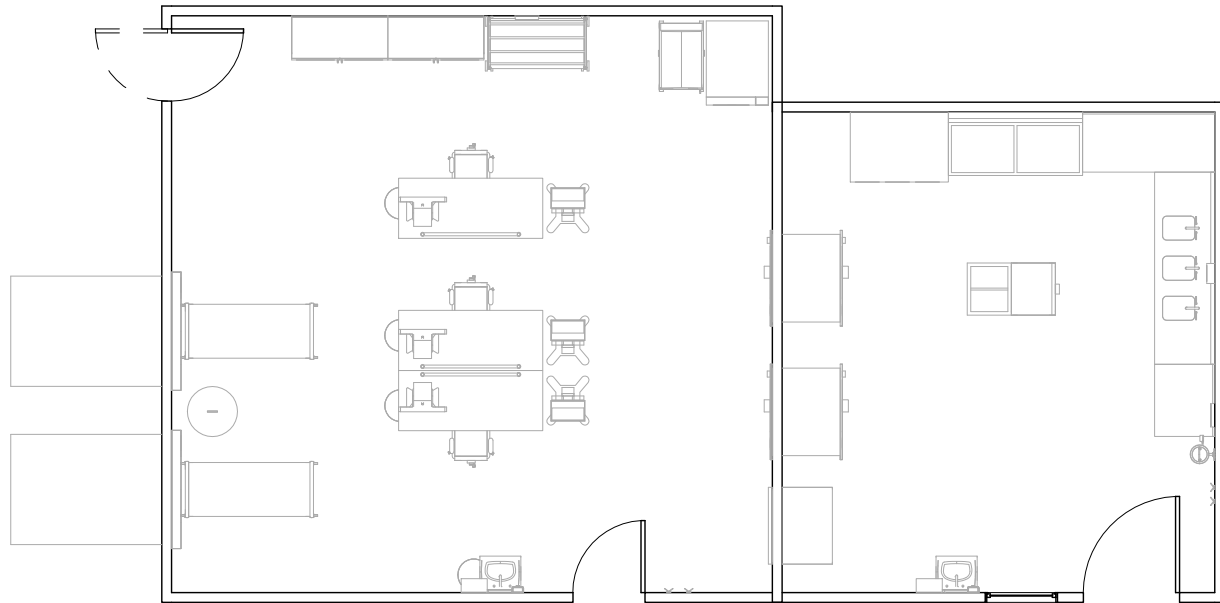
**CSIA2 - WEST ELEVATION**

<b>Room Description:</b> Workroom, Sterile Processing, Clean Instrument Assembly (CSIA2)	<b>NSF:</b> 600	<b>CSIA2</b>	
<b>Sheet Description:</b> Interior Room Elevations	<b>Scale:</b> 1/4" = 1'-0"	Sheet <b>5</b>	of <b>7</b>

CSIA1 - EQUIPMENT SCHEDULE

JSN	Nomenclature	Qty	LF	Logistics				Utilities					
				AR	NA	AF	VA	1	2	3	4	5	6
A5075	Dispenser, Soap, Disposable	1		C	C	C	C	-	-	-	-	-	-
A5080	Dispenser, Paper Towel, SS, Surface Mounted	1		A	A	A	A	-	-	-	-	-	-
A5145	Hook, Garment, Double, SS, Surface Mounted	2		A	A	A	A	-	-	-	-	-	-
CW150	Cabinet, Floor Standing, 5 SH, 2 GDO, ST, 98"x48"	2		A	A	A	A	-	-	-	-	-	-
E0135	Bench, Central Sterile	3		C	C	C	C	-	-	-	-	-	-
E0945	Mobile, Workstation	3		C	C	C	C	-	-	-	-	-	-
F0230	Chair, Drafting, Rotary	3		C	C	C	C	-	-	-	-	-	-
F2000	Basket, Wastepaper, Round, Metal	4		C	C	C	C	-	-	-	-	-	-
F2020	Can, Trash, 44 Gallon	1		C	C	C	C	-	-	-	-	-	-
F3200	Clock, Battery, 12" Diameter	1		C	C	C	C	-	-	-	-	-	-
M1801	Computer, Microprocessing, w/Flat Panel Monitor	3		C	C	C	C	-	A	-	-	-	-
M2700	Sealer, Heat, Plastic Bag, w/Motor, Portable	3		C	C	C	C	-	A	-	-	-	-
P3100	Lavatory, Vitreous China, Slab Type	1		A	A	A	A	D	-	-	-	-	-
S0442	Sterilizer, Stm, VAC, 2DO, RCSD 2WLL, 24x36x48 Chamber	2		A	A	A	A	B	F	D	A	-	-
S0495	Loading Car & Transfer Carriage, 24x36x48 Chamber	2		A	A	A	A	-	-	-	-	-	-
S5500	Sterilizer, Hydrogen Peroxide Gas, 1.75 cu ft Cham	1		C	C	C	C	-	B	-	-	-	-
S5505	Sterilizer, Hydrogen Peroxide Gas, 3.5 cu ft Cham	1		C	C	C	C	-	G	-	-	-	-
TB025	Sterile Wrap Rack	1		C	C	C	C	-	-	-	-	-	-

<b>Room Description:</b> Workroom, Sterile Processing, Clean Instrument Assembly (CSIA2)	<b>NSF:</b> 600	<h1>CSIA2</h1>	
		Sheet <b>6</b>	of <b>7</b>
<b>Sheet Description:</b> Equipment Schedule	<b>Scale:</b>		



CSIA2

CSDE1

<b>Room Description:</b> Workroom, Sterile Processing, Clean Instrument Assembly (CSIA2)	<b>NSF:</b> 600	<b>CSIA2</b>	
<b>Sheet Description:</b> Flow Diagram	<b>Scale:</b> 1/8" = 1'-0"	Sheet <b>7</b>	of <b>7</b>