

NOTES

1. CEILING TILES TO BE CLEAN ROOM VINYL FACED TILE

KEY NOTES:

1. CONTROL LIGHT FROM SWITCH ON HEADWALL. SEE ELEVATION FOR LOCATION.
2. USE WET LOCATION FIXTURE.

BEDROOM, ISOLATION, NEGATIVE (BRIT1) 4.01.03

NURSING UNIT

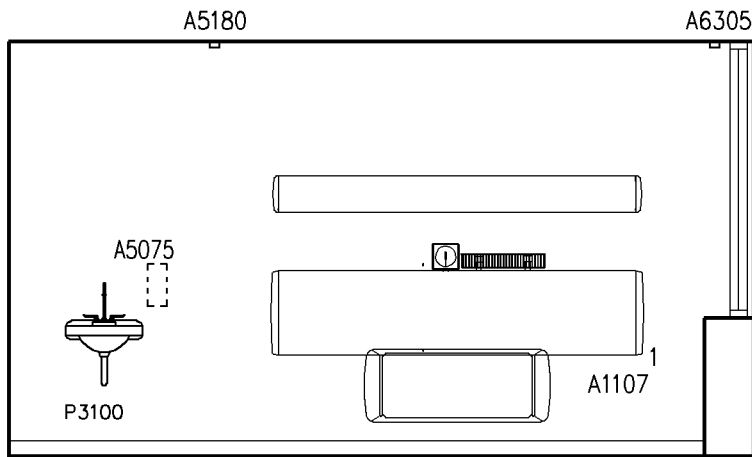
CEILING PLAN

DATE: 04/24/2006

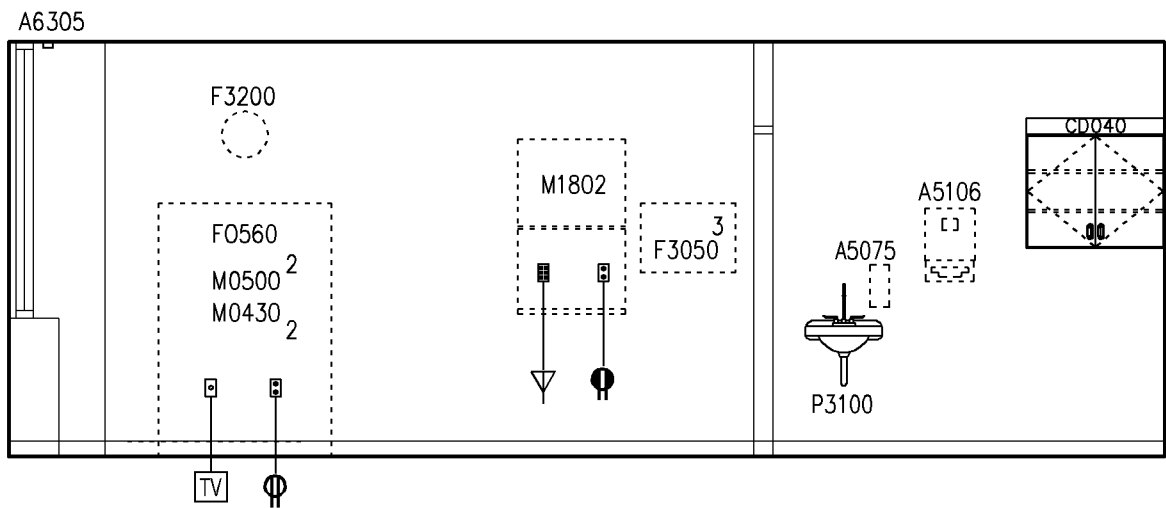
0 1000 2000



1:50 SCALE (MILLIMETERS)



NORTH



SOUTH

NOTES

1. SEE TYPICAL EQUIPMENT MOUNTING HEIGHTS SCHEDULE. SEE SECTION 7.01

KEY NOTES:

1. SEE ELEVATION A1107 HEADWALL FOR UTILITIES & ACCESSORIES
2. M0500 TV AND M0430 VIDEO RECORDER/PLAYER LOCATED INSIDE ARMOIRE F0560.
3. DRY ERASE BOARD, F3050—18"H x 24"W

BEDROOM, ISOLATION, NEGATIVE (BRIT1) 4.01.03

NURSING UNIT

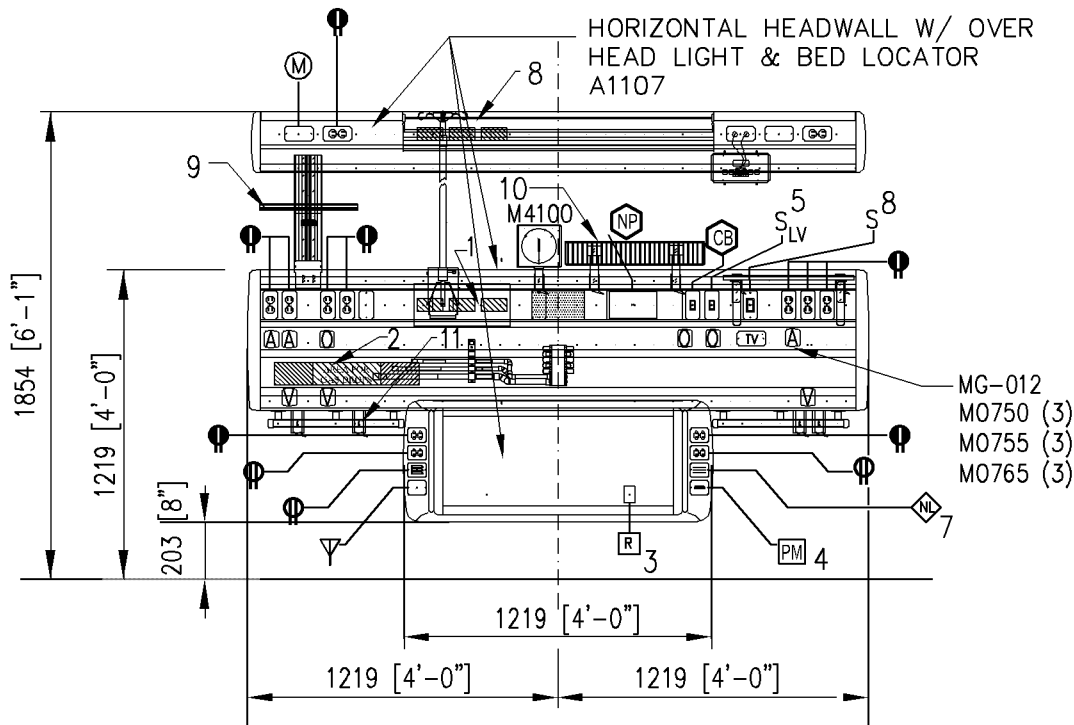
ELEVATIONS

DATE: 04/24/2006

0 1000 2000



1:50 SCALE (MILLIMETERS)



HEADWALL UNIT

NOTES:

1. RECEPTACLES ON CRITICAL POWER SHALL BE SERVED FROM CRITICAL POWER TRANSFER SWITCH.
2. ALL RECEPTACLES IN HEADWALL SHALL BE HOSPITAL GRADE.

KEY NOTES:

1. ROUGH IN AREA FOR ELECTRICAL JUNCTION BOXES.
2. AREA FOR MEDICAL GAS DROPS.
3. LOW VOLTAGE CONTROLLER FOR CONTROL OF UP DOWN HEADWALL OVERBED LIGHT.
4. PATIENT MONITOR PROVISION WHERE REQUIRED BY FACILITY USER.
5. THREE POSITION MOMENTARY CONTACT ROCKER SWITCH WITH CENTER "OFF" POSITION. SWITCH CONTROLS UP / DOWN, LIGHT FIXTURE IN HEADWALL VIA LOW VOLTAGE CONTROLLER.
6. AUDIO/VISUAL TYPE NURSE CALL PATIENT STATION. PROVIDE CORD CONNECTED PATIENT CONTROL UNIT WITH NURSE CALL BUTTON, LIGHTING CONTROL, SPEAKER, AND TELEVISION CONTROL.
7. NIGHT LIGHT PROVISION IF PATIENT BED NOT EQUIPPED WITH NIGHT LIGHT, VERIFY WITH FACILITY USER.
8. UP/DOWN HEADWALL LIGHT.
9. MONITOR MOUNTING CHANNEL & SHELF.
10. HEADWALL MOUNTED BASKET FOR BLOOD PRESSURE CUP & THERMOMETER.
11. BOTTLE SLIDE TYPICAL OF FOUR (4).

BEDROOM, ISOLATION, NEGATIVE (BRIT1) 4.01.03

NURSING UNIT

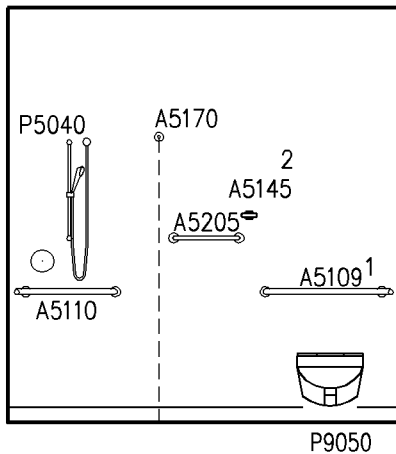
ELEVATIONS

DATE: 04/24/2006

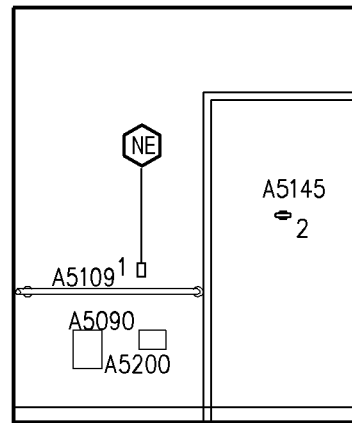
0 500 1000



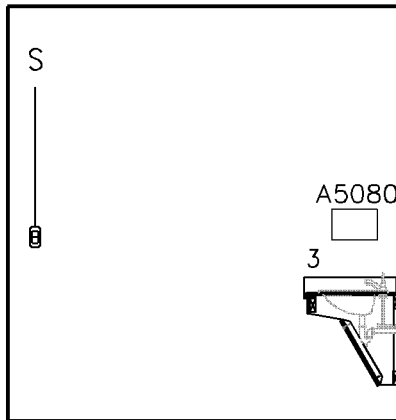
1:30 SCALE (MILLIMETERS)



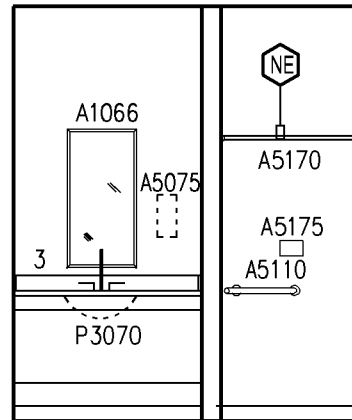
NORTH
(BATHROOM)



EAST
(BATHROOM)



SOUTH
(BATHROOM)



WEST
(BATHROOM)

NOTES

1. SEE TYPICAL EQUIPMENT MOUNTING HEIGHTS SCHEDULE. SEE SECTION 7.01

KEY NOTES:

1. PROVIDE A5109 GRAB BARS THAT COMPLY WITH ADA.
2. MOUNT A5145 ROBE HOOK 1372 [4'-6"] A.F.F.
3. BUILT IN COUNTERTOP

BEDROOM, ISOLATION, NEGATIVE (BRIT1-TLTS2) 4.01.03

NURSING UNIT

ELEVATIONS

DATE: 04/24/2006

0 1000 2000



1:50 SCALE (MILLIMETERS)

Medical Equipment Room Guide Plates

4.01 Nursing Unit

Plate Number 4.01.03

Room Name Bedroom, Isolation, Negative

SEPS# BRIT1

JSN	Nomenclature	Qty	Army Cat	Navy Cat	AF Cat	Utilities					
						1	2	3	4	5	6
A1107	Headwall, Prefabricated, General 1-2 beds	1	A	A	A	.	F	G	.	.	.
A5075	Dispenser, Soap, Disposable	1	C	C	C
A5080	Dispenser, Paper Towel, SS, Surface Mounted	1	A	A	A
A5106	Waste Disposal Unit, Sharps w/Glove Dispenser	1	C	C	C
A5180	Track, Cubicle, Surface, Mounted, With Curtain	1	A	A	A
A6305	Drapes, Pair	1	C	C	C
F0260	Chair, High Back, Patient	1	C	C	C
F0355	Footstool, Straight	1	C	C	C
F0400	Cabinet, Bedside, Door, Drawer	1	C	C	C
F0560	Wardrobe, television	1	C	C	C
F2000	Basket, Wastepaper, Round, Metal, 18 H x 16 Dia	1	C	C	C
F3200	Clock, Battery, 12 " Diameter	1	C	C	C
F3050	Dry Erase Board 18x24	1	C	C	C
M0430	Recorder / Player, Cassette, Video	1	C	C	C	.	A
M0500	Television, Color, 20" Diagonal	1	C	C	C	.	A
M0750	Flowmeter, Air, Connect w/50 PSI Supply	3	C	C	C	.	.	F	.	.	.
M0755	Flowmeter, Oxygen, Low Flow	3	C	C	C	.	.	A	.	.	.
M0765	Regulator, Vacuum	3	C	C	C	.	.	E	.	.	.
M1802	Work Station, Computer, Retractable, Wall Mounted	1	C	C	C	.	A
M3025	Mattress, Pressure Reduction	1	C	C	C
M3070	Hamper, Linen, Mobile, w/Lid		C	C	C
M3072	Frame, Infectious Waste Bag w/Lid		C	C	C
M4100	Sphygmomanometer, Aneroid, Headwall Mounted	1	C	C	C
M4200	Otoscope	1	C	C	C	.	A
M4255	Stand, IV, adjustable	1	C	C	C
M4266	Pump, Volumetric, Infusion, Multiple Line	1	C	C	C	.	A
M7010	Bed, Patient, Electric	1	C	C	C	.	A
M7040	Table, Overbed	1	C	C	C
M7910	Thermometer, Electronic	1	C	C	C
P3100	Lavatory, Vitreous China, Slab Type	1	A	A	A	D

April 24, 2006

Medical Equipment Room Guide Plates

4.01 Nursing Unit

Plate Number 4.01.03

Room Name: Bedroom, Isolation, Negative (BRAR1)

SEPS# BRIT1

JSN	Nomenclature	Qty	Army Cat	Navy Cat	AF Cat	Utilities					
						1	2	3	4	5	6
A5075	Dispenser, Soap Disposable	1	C	C	C
A5080	Dispenser, Paper Towel, SS, Surface Mounted	1	A	A	A
A5106	Waste Disposal Unit, Sharps w/Glove Dispenser	1	C	C	C
A5145	Hook, Garment, Double, SS, Surface Mounted	1	A	A	A
CD040	Cabinet, W/H , 2 Shelf, 2DO, Sloping Top 38x36x13	1	A	A	A
F2000	Basket, Wastepaper, Round, Metal, 18H x 16 Dia	1	C	C	C	D
M3070	Hamper, Linen, Mobile, w/Lid	1	C	C	C
M3072	Frame, Infectious Waste Bag w/Lid	1	C	C	C
P3100	Lavatory, Vitreous China, Slab Type	1	A	A	A

Medical Equipment Room Guide Plates

4.01 Nursing Unit

Plate Number 4.01.03

Room Name: Bedroom, Isolation, Negative (TLTS2)

SEPS# BRIT1

JSN	Nomenclature	Qty	Army Cat	Navy Cat	AF Cat	Utilities					
						1	2	3	4	5	6
A1066	Mirror, Float Glass, With SS Frame	1	A	A	A
A5030	Bench, Stall, Shower, Built In	1	A	A	A
A5075	Dispenser, Soap, Disposable	1	C	C	C
A5080	Dispenser, Paper Towel, SS, Surface Mounted	1	A	A	A
A5090	Disposal, Sanitary Napkin, SS, Surface Mounted	1	A	A	A
A5109	Grab Bar, 1-1/4" Dia., SS, 2 Wall, W/C Accessible	1	A	A	A
A5110	Grab bar, 1-1/4" Dia., SS, 2 wall, Shower Use	1	A	A	A
A5145	Hook, Garment, Double, SS, Surface Mounted	2	A	A	A
A5170	Rod, Shower Curtain, 1" Diameter, W/Curtain & Hooks	1	A	A	A
A5175	Soap Dish, With Bar, SS, Recessed	1	A	A	A
A5200	Dispenser, Toilet Tissue, SS, 2-Roll, Surface Mounted	1	A	A	A
A5205	Bar, Towel, 1" Diameter, SS, Surface Mounted	1	A	A	A
F2000	Basket, Wastepaper, Round, Metal	1	C	C	C
P3070	Lavatory, Vitreous China, Under Countertop Mounted	1	A	A	A	D
P5040	Shower, Single, Hand-Held	1	A	A	A	D
P9050	Toilet, Wall Hung, Siphon Jet	1	A	A	A	B