



DoD Sustainability and Energy Requirements Overview



IMPORTANT NOTE: This slide deck replaces all former slides decks here:
<https://www.wbdg.org/dod/sustainability/training>
Delete all previous versions. When UFC 1-200-02 is next updated, these slides will be replaced.

Tri-Service Criteria Sustainable Functional Working Group

Sections



- **Overview of Sustainability Requirements**
- **Tracking and Reporting Compliance**
- **UFC 1-200-02 Compendium**
- **Specifying and Executing Sustainability**
- **Back-up: Criteria Program Overview**



Overview of Sustainability Requirements

<https://www.wbdg.org/dod/sustainability>

Items of Note



- The following slides contain content applicable to all DoD projects, for both Contractors and Government employees.
- For policies, criteria, Service-specific requirements, third party certification (TPC) links and training, refer to:
<https://www.wbdg.org/dod/sustainability>

Policy/Criteria Requirements

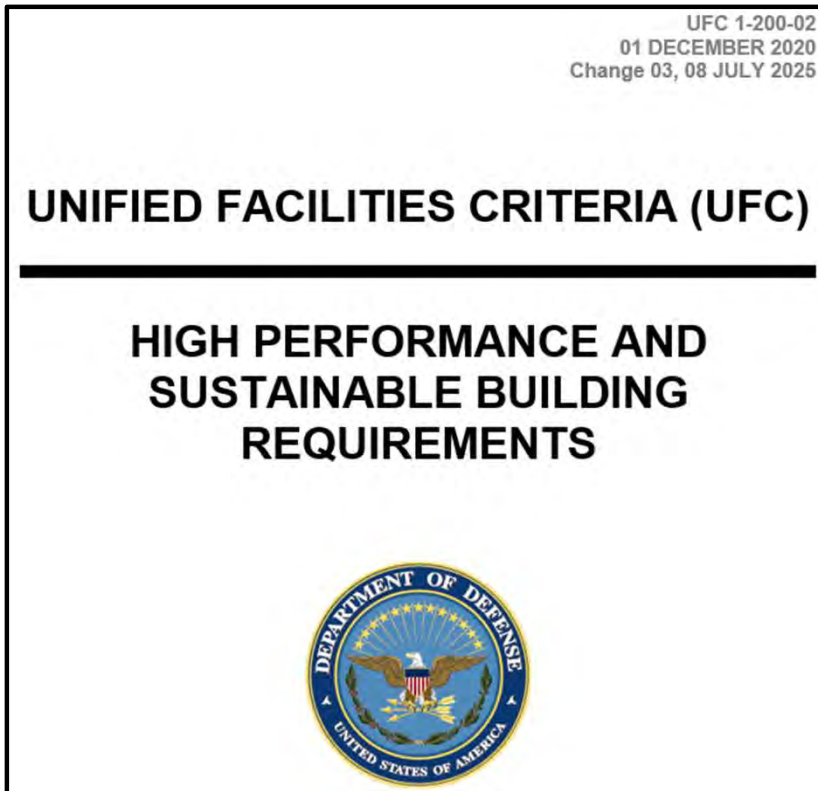


- UFC 1-200-02 “High Performance and Sustainable Building Requirements” (HPSB), July 2025
 - [High Performance and Sustainable Building Requirements](#)
- UFGS 01-33-29 “Sustainability Requirements and Reporting”, Aug 2025
 - [Sustainability Requirements and Reporting](#)
- High Performance and Sustainable Building (HPSB) Checklist, no change
 - <https://www.wbdg.org/dod/sustainability/tracking-reporting>
- Low Impact Development Checklists
 - <https://www.wbdg.org/dod/sustainability/tracking-reporting>
- Component Policy
 - <https://www.wbdg.org/dod/sustainability/policy-mandates>

UFC 1-200-02 Overview



- One stop shop for Sustainability Criteria.
- Compiles the many Sustainability and Energy laws and policies into one place.
- All projects with new work (new or existing building) must comply in whole or in part.



UFC 1-200-02: Applicability



- UFC 1-200-02 is **MANDATORY** for all buildings
 - Follow criteria requirements just like any other UFC
- UFC 1-200-02 also covers modernization, renovation, FSRM requirements
 - Comply within scope
- Application of Third-Party Certification (TPC) is ancillary and in addition to **FIRST** meeting UFC 1-200-02 requirements
 - Not either/or, do both when applicable
- **IMPORTANT:** Government and contractor PMs/DMs/CMs do **not** have the authority to exempt UFC requirements or cut ANY project scope. Seek approval to change scope or exempt criteria through proper chain-of-command process.

UFC 1-200-02 Applicability cont.



1-4 APPLICABILITY.

This UFC follows the same applicability as UFC 1-200-01, paragraph 1-3, with the exception this UFC does not apply to:

- Buildings to be demolished or deconstructed, except for demolition waste diversion reporting
- Buildings that have a status of Report of Excess (ROE) submitted, ROE accepted, or Determination to Dispose
- Structures and linear construction that do not meet the definition of a building.

Essentially, all new work in new buildings or existing buildings, and regardless of square footage, dollar value, or funding source, must comply with UFC 1-200-02, as well as complete at least an initial HPSB Checklist.

UFC 1-200-02: Applicability cont.



NEW THRESHOLDS -

≥25,000 GSF and \$4M

Commissioning is different:

Threshold is ≥10,000 SF, per ASHRAE 90.1-2019 (compliance a statutory requirement per 10 CFR 433.100)

Table 1-1 Building Requirements and Thresholds

Requirements	Thresholds (Refer to each chapter's "Overview" for details)
Chapter 1	Each building as applicable.
Chapter 2	Each planning, design, construction, and O/M activity.
Chapter 3	Assessments of existing building assets ≥25,000 GSF (2323 GSM).
Chapter 4	Each building that meets statutory threshold. ²
Chapter 5 For Service policy and guidance documents, refer to paragraph titled " Service Specific Policy ."	<p>HPSB Guiding Principles Compliance Tracking and Reporting (use Service HPSB Checklist³ for each building, beginning in the planning stage in order to determine the extent of compliance, and updated throughout the design and construction execution):</p> <ol style="list-style-type: none"> 1. For Army and Navy, new building or stand-alone addition ≥25,000 GSF (2323 GSM); for Air Force, all new buildings or stand-alone additions. 2. Comprehensive replacement in an existing building that is ≥25,000 GSF (2323 GSM), with total cost >\$4M and 50% or more Estimated Replacement Cost (ERC) 3. Assessments of existing building assets ≥25,000 GSF (2323 GSM) <p>Addition of Third-Party Certification:</p> <ol style="list-style-type: none"> 1. New building or stand-alone addition ≥25,000 GSF (2323 GSM), with construction cost >\$4M 2. Comprehensive replacement in an existing building that is ≥25,000 GSF (2323 GSM), with total cost greater than 3) \$4M /3/ and 50% or more ERC.
Appendices A, B, C, and D	Each building as applicable.
All Chapters and Appendices	New building or additions <25,000 GSF (2323 GSM), sustainment, modernization, and restoration building improvements must comply with UFC requirements relevant to the scope of the project/work, as determined by the Project Delivery Team as early as possible during project process. Comprehensive replacement to a building includes significant opportunities for improvement in: energy and water efficiency (such as HVAC, lighting, building envelope, and other building components); indoor air quality; other requirements in this UFC; and additions that are part of the comprehensive replacement. Total cost for comprehensive replacement includes addition, sustainment, and associated restoration.

UFC 1-200-02 Applicability - FSRM



2-1.2 Work in Existing Buildings.

In some of the paragraphs that follow, there are specific requirements provided for facilities sustainment, restoration, and modernization (FSRM) projects. For existing building renovation, the goal is to improve the performance of the existing building inventory with every investment. The systems and components included in the scope of the project must meet the requirements of this UFC, by providing the most resource-efficient solutions. This UFC does not apply to systems and components not included in the scope of the project. The intent is not to expand the scope of the project.

Must comply with requirements that are reflected by project scope. FSRM project examples:

- Scope does not include replacement of water fixtures does not require compliance with “Indoor Water Use”.
- Scope does not fully replace the existing mechanical system does not require full compliance with ASHRAE 90.1-2019 but would still provide compliant components and upgrades as applicable.
- Scope does not include building envelope/windows/doors upgrade, but does include a completely replaced mechanical system, may find it difficult to reach baseline ASHRAE 90.1.

Third-Party Certification



- **IMPORTANT:** TPC is not equivalent to UFC 1-200-02 compliance, and does not replace the requirement to comply, complete and record compliance with the use of the HPSB Checklist. Acceptable TPC:

Air Force:

- USGBC Guiding Principles Assessment (DOD version)
- GBI Guiding Principles Compliance (DOD Version)



USACE:

- USGBC LEED SILVER



NAVFAC:

- USGBC LEED
- USGBC Guiding Principles Assessment (DOD version)
- GBI Green Globes
- GBI Guiding Principles Compliance (DOD Version)





Tracking and Reporting Compliance

Tracking and Reporting - Compliance



- When exceptions are needed, missed criteria require one of the following justifications:
 - Mission restriction or exclusion (24/7 operation; SCIF)
 - Life-cycle cost effectiveness (LCCE) restricts or excludes full compliance
 - Regional restriction or exclusion (limited O/M contracting; no local recycling)
 - Locale restriction or exclusion (no steam to meter; building location restricts daylighting)
 - Safety (example: building orientation restriction for anti-terrorism due to existing infrastructure).
- >25k SF and FSRM must comply with requirements that are reflected by project scope.
 - Example: FSRM project that does not include replacement of water fixtures does not require compliance with “Indoor Water Use”.

Building Life Cycle Cost (BLCC) Analysis



- National Institute of Standards and Technology (NIST) developed Handbook 135 and BLCC
- BLCC performs economic analyses by evaluating the relative cost effectiveness of alternative buildings and building-related systems or components
 - Best for energy and water conservation, and renewable energy
 - Typically used to balance first cost against long term return on investment
 - Compares alternative designs for lowest LCC
 - Also computes net savings, savings-to-investment ratio, adjusted internal rate of return, and years to payback
 - Free download with registration

Life Cycle Cost Analysis



LCCA required when:

- Project includes systems contributing to energy footprint, such as envelope, HVAC, domestic hot water, lighting, etc. and
- There is more than one suitable alternative.
- Use the alternative with the lowest LCC.
- UFC 1-200-02 footnote:

² In addition to the new building requirements, each existing building large capital energy investments (each project for which the cost of the systems that impact energy consumption exceeds \$1,000,000, which constitutes a capital investment, per National Defense Authorization Act) are to employ the most energy efficient designs, systems, equipment, and controls that are life cycle cost effective.

§ 436.18 Measuring cost-effectiveness.

• From 10 CFR 436:

- (e) Mutually exclusive alternatives for a given building energy or water system, considered in determining such matters as the optimal size of a solar energy system, the optimal thickness of insulation, or the best choice of double-glazing or triple-glazing for windows, shall be compared and evaluated on the basis of life cycle costs or net savings over equivalent study periods. The alternative which is estimated to result in the lowest life cycle costs or the highest net savings shall be deemed the most cost-effective because it tends to minimize the life cycle cost of Federal building.



UFC 1-200-02 Compendium

Employ Integrated Design Principles



- Establishment of several considerations and goals during the initial planning stage, and during the charrette process, which help to reduce the impact of implementation:

Siting and landscape

Community integration

energy

materials

Recycling and composting

Protect historic properties

transportation

water

Indoor environmental quality

- Some goals and considerations are related to criteria listed in later paragraphs:

Occupant health and wellness

No ozone-depleting substances

Building resilience

Alternative water usage

Commissioning



- **Meet requirements of ASHRAE 90.1**
 - Commissioning required for buildings that are $\geq 10,000$ SF or more
- **Use UFGS 01 91 00.15 Building Commissioning**
 - Include an experienced commissioning provider, who should be independent of the project design, construction, and operations team
 - All design decisions, changes and design submittals must support the DD1391 or Basis of Design scope.
 - Construction submittals, modifications, systems' testing, and reports must also support DD1391 or Basis of Design scope

IT'S ALL ABOUT DESIGN INTENT!

Optimize Energy Performance – Energy Efficiency – Energy Standards



- Commercial and Multi-Family High-Rise Residential - ASRHAE 90.1 plus 30% better, or highest level that is **LCCE**.
- Low-rise Residential – IECC plus 30% better, or highest level that is **LCCE**.
- Modernization and Renovation options
 - Measured FY2003 baseline plus 30% better
 - Measured FY2015 baseline plus 20% better
 - Modeled ASHRAE 90.1 baseline plus 30% better
 - Achieve Energy Star score of at least 75.

When 30% target is missed, modify design to achieve highest energy efficiency that is LCCE

Energy Efficiency – Energy Efficient Products



- Use products that are Energy Star certified when applicable
- Use products that meet or exceed FEMP energy-efficient products requirements in covered product categories.



Energy Efficiency – Standby Power Devices



- Use products that are commercially available off-the shelf and use no more than 1 watt in their standby mode
- Must be **LCCE** and practicable with no compromise to performance.



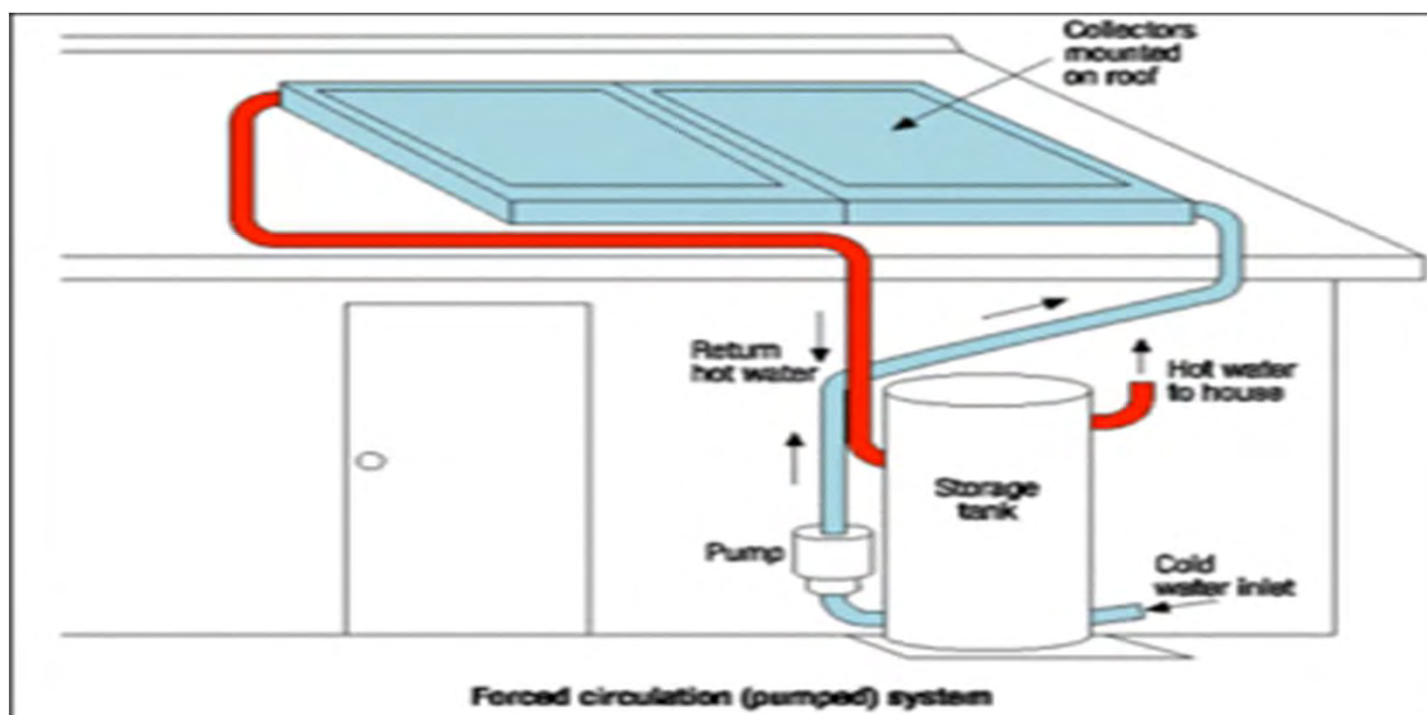
On-Site Renewable Energy

- IgCC 701.4.1.1 (7.4.1.1) On-Site Renewable Energy Systems
- UFC 3-440-01 Renewable Energy Systems – Facility
- Comply with UFC 4-010-06
- Installation-wide solution, on-site when **LCCE**.



On-Site Renewable Energy - SDHW

- Comply with Energy Independence and Security Act (EISA) 2007 Section 523, 30% of annual hot water through SDHW, where **LCCE**.
- DOE “Savings-to-Investment Ratio Solar Water Heating”
<http://www.wbdg.org/resources/solar-water-heating>



Metering



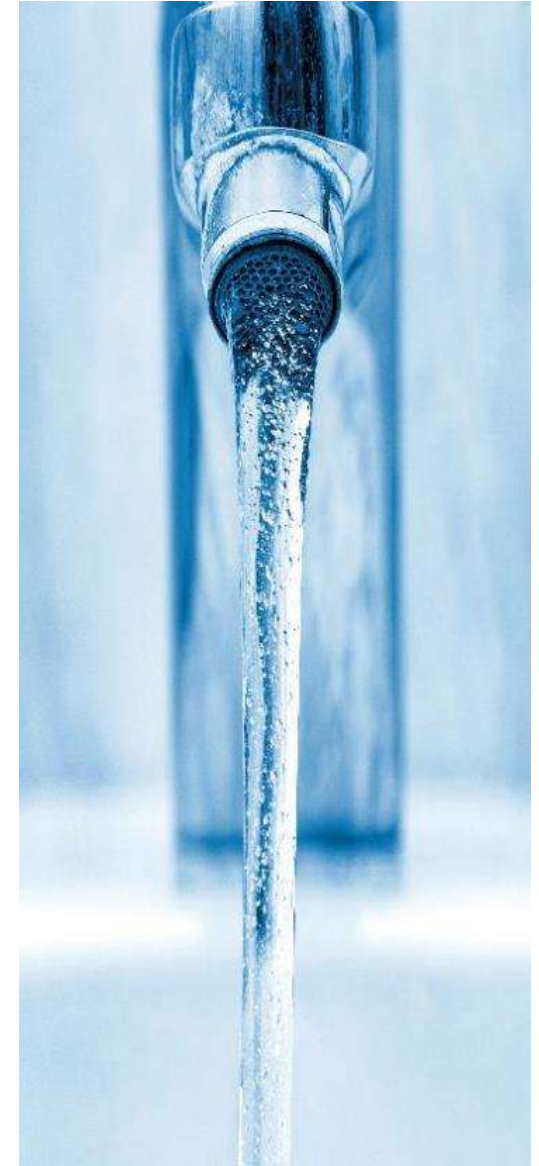
- Compliance with DOD Utilities Meter Policy
- Ensure connection to base-wide energy and utility monitoring
- Meter must comply with UFC 4-010-06



Protect and Conserve Water – Indoor Water Use



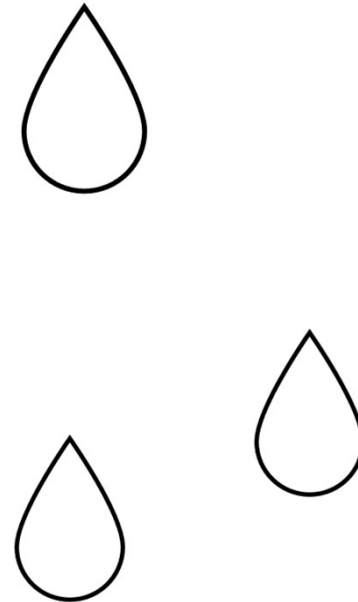
- All water efficiency design decisions to be **LCCE**
- IgCC 601.3.2 (6.3.2) Building Water Use Reduction
 - Incorporates WaterSense-labeled fixtures in UFGSs
 - Replacement Water Closets must have flush value of up to 1.6 GPF
- Compliance with DOD Utilities Meter Policy
- Ensure connection to base-wide energy and utility monitoring
- Meter must comply with UFC 4-010-06



Outdoor Water Use



- No potable water use for permanent landscape irrigation, but can use potable water for plant establishment (per DoD policy)
- Comply with UFC 3-201-02 Landscape Architecture
- Compliance with DOD Utilities Meter Policy (for alternate and existing sources only)



Alternate Water



- Where **LCCE** and permitted, use alternative water sources.
- Requires pro-active approach and documented LCCE consideration.
- Metering compliant with DOD Utilities Meter Policy



BASE DESIGN DECISIONS ON LCCE

Stormwater Management

- Comply with UFC 3-210-10 Low Impact Development



**BASE DESIGN DECISIONS
ON STATUTE AND POLICY**

Enhance Indoor Environmental Quality – Ventilation and Thermal Comfort



- **Meet UFC 3-410-01 Heating, Ventilation and Air-Conditioning Systems**
- **Prioritize the use of passive design strategies**
- **Use UFC 4-510-01 Military Medical Facilities for additional ventilation and thermal comfort criteria for military medical facilities**



Daylighting and Lighting Controls



- **Improve access to and benefits from daylight**
 - **IgCC 801.4.1.2 (8.4.1.2) Minimum Sidelighting Effective Aperture for Office Spaces and Classrooms**
 - **Applies to daylighting where feasible in employee work areas, such as classrooms and offices, break rooms and other gathering areas on exterior walls to maximize daylighting.**
 - **Maximize daylighting in employee work areas, such as classrooms and offices, break rooms and other areas on exterior walls.**
 - **Use UFC 3-530-01 Lighting Controls (both daylighting and artificial)**
 - **Use UFC 4-510-01 Medical Military Facilities for additional daylighting criteria for military medical facilities**



Moisture and Mold Control



- Establish and implement a moisture control strategy
- IAQ construction management plan
- UFC 3-410-01 HVAC Systems (ventilation)
- UFC 3-101-01 Architecture (exterior wall air and moisture control barrier)
- Use “Protect Indoor Air Quality” Best Practices



=



Low-Emitting Materials and Products



- **Comply with IgCC 801.4.2 (8.4.2) Materials**
 - Composite wood products
 - Flooring and carpet systems
 - Wall panels
 - Insulation
 - Adhesives
 - Sealants
 - Interior paints and finishes
 - Solvents
 - Furnishings



Low-Emitting Materials and Products – cont.



- UFGS 01 33 29 Table 3-1 Volatile Organic Compound (VOC) maximum requirements
- Many UFGS Masters contain materials requirements with specific certifications or equivalents
 - Greenguard
 - SCS
 - Equivalent validation of IgCC requirements
 - California Section 01350
 - California Air Resources Board (CARB)
 - SCQALMD Rule 1113
 - SCQALMD Rule 1168
 - Green Seal Standard GS-11
 - Green Seal Standard GS-36
 - BIFMA M7.1 (X7.1 or e3 sec 7.6.2)



Reduce Environmental Impact of Materials – Products



- Use products that conform to
 - EPA's Recommendations of Specifications, Standards, and Ecolabels for Federal Purchasing
- Many UFGSs have a minimum threshold baked in



Materials – Recycled Content

- Products that conform to
 - RCRA Section 6002 and 42 USC 6962
 - EPA's Comprehensive Procurement Guidelines (CPG)
- Many UFGSs have a minimum threshold baked in



Materials – Biologically-Based Content



- Products that conform to
 - 7 USC 8102
 - USDA's BioPreferred
- Many UFGSs have a minimum threshold baked in



Ozone-Depleting Substances

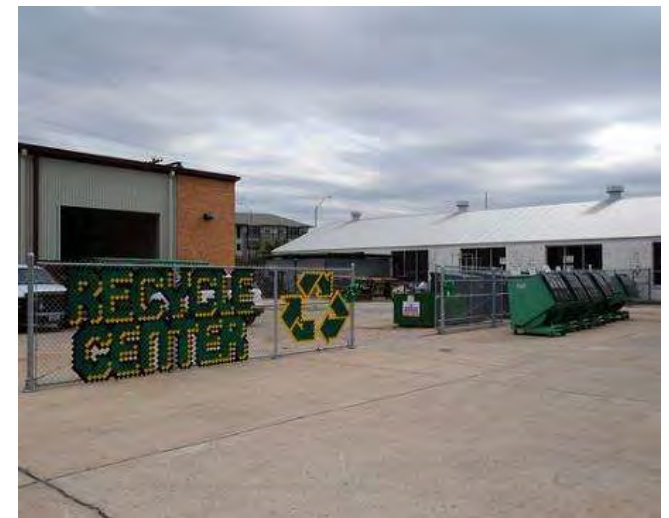
- Use products that conform to
 - EPAs Significant New Alternatives Policy (SNAP) Program for refrigerants
- Many UFGSs have a minimum threshold baked in



Solid Waste Management



- Divert 60% of construction and demolition waste from landfills and
- Provide recycled services for building occupants
- Verify availability of recycling centers



Risk Assessment

- Installation Resilience Plans
- Comply with UFC 2-100-01 Installation Planning



CONSIDER EARLY!

Building Resilience



- DOD-provided requirement to address Government-identified risks.
- Installation Resilience Plans
- Comply with UFC 1-200-01 Installation Planning
- Regional, installation, and site risk identification must be established at project inception. Identify terror, emergency access, operational timeline in crisis, mission essential requirements. What is to be protected, people or buildings?
- Government-provided mitigation factors affect identification of both mitigation scope and customer scope, as well as project location, function, and operation.

CONSIDER EARLY!





Specifying and Executing Sustainability

Ensuring Proof of Compliance



- In order to track and report a “sustainable Federal building”, provide all of the following for each applicable project:
 - Sustainability chapter - in the Basis of Design, Scope of Work, or Design Analysis; details for each applicable building in the project; updated at each design submittal.
 - UFGS 01 33 29 SUSTAINABILITY REQUIREMENTS AND REPORTING – edited; must include completed HPSB and TPC checklists for each applicable building in the project as attachments.
 - “S” submittals - appear on the Submittal Register. These are required specification submittals that prove sustainability requirements have been met by the post-award construction contractor.
 - Sustainability eNotebook - electronic organization system that includes all post-award documentation for sustainability compliance.

All MCON-level Projects – UFGS + Checklist(s)



EDITED
UFGS 01 33 29



ATTACHMENT 1
COMPLETED Service
HPSB CHECKLIST
(do not include project
cost!)



ATTACHMENT 2
COMPLETED TPC
CHECKLIST

USACE / NAVFAC / AFCEC / NWSA
Preparing Activity: NAVFAC

UFGS-01 33 29 (February 2021)
UFGS-01 33 29 (February 2021)
UFGS-01 33 29.05 20 (March 2019)

UNIFIED FACILITIES GUIDE SPECIFICATIONS

Reference: as in agreement with UFGS dated February 2021

SECTION 01 33 29
SUSTAINABILITY REQUIREMENTS AND REPORTING
02/21

NOTE: This guide specification covers the requirements for providing sustainability documentation for Building Principles Validation (BPV) and Third Party Certification (TPC). BPV is equivalent to meeting the requirements of UFGS 1-200-02 "EISS PERFORMANCE AND SUSTAINABLE BUILDING REQUIREMENTS." All projects must meet the requirements of UFGS 1-200-02.

This guide specification includes tailoring for both DESIGN-BUILD and DESIGN-BID-BUILD.

This guide specification includes tailoring for ARMY. Declassify the ARMY tailoring option for Army-assigned projects.

Use a properly edited version of this guide specification for projects that contain one or more buildings that meet one of the following:

a) For Army and Navy, new buildings or stand-alone additions greater than or equal to 10,000 SF; for Air Force, all new buildings or stand-alone additions.

b) Comprehensive replacement of an existing building that is greater than or equal to 10,000 SF, with total cost (includes new work, restoration, operations and maintenance, materials, restoration, and modernization associated with and existing building restoration) greater than \$1M and 50-percent or more Estimated Replacement Cost (ERC).

Use the HPSB Checklist for the Service who will maintain the building asset in their Real Property Record. Complete an HPSB Checklist for each applicable building in the project, before attaching to this specification. Checklist(s) must be completely filled out before being used in a solicitation. Check with the user Command for solicitation.

SECTION 01 33 29 Page 3

NAVFAC HIGH PERFORMANCE AND SUSTAINABLE BUILDING CHECKLIST - GOALS

PROJECT INFORMATION

Work Order No: _____ MCON P-No / Customer Reference No: _____
Project Title: _____
Location / UIC Name: _____
NAVFAC Project Manager: _____ Category Code: _____ Project Design Level: _____
Facility Area: _____ AE Contract # & T.O: _____ AE Firm Name: _____
Project Phase: _____ Design Start / FDR: _____ Solicitation Documents Complete: _____ Award Date (Y): _____ BOD (Y): _____
Construction Contract: _____

SUSTAINABILITY DATA - GUIDING PRINCIPLES FOR SUSTAINABLE DEVELOPMENT

Use this form to collect Design Goals information to be recorded on the Sustainable and Energy Tab in appropriate

GOALS:

1. Mark "Not" only when all built one of the listed justifications is applicable, and mark those justifications. Otherwise, mark "Yes."
2. If project is for renovation of an existing building for which tracking is required, complete a separate form for each building.

PRELIMINARY PROJECT INFORMATION

1. How many buildings are included in the project? _____
2. Does at least one building meet one of the following: 1) new construction (new building or addition to existing); - OR - 2) Renovation in an existing building, with construction cost greater than \$1M? ☐ Yes ☐ No
3. Identify the building to be tracked in the tab: _____

DESIGN DEVELOPMENT - DOCUMENTATION OF COMPLIANCE WITH GUIDING PRINCIPLES

1. Employ Integrated Design Principles

1. Integrated Design

Goals: In Compliance ☐ Yes ☐ No ☐ N/A
Not due to: _____
Mission predictor: _____ Building/Issue: _____
Not LDC: _____ Renovation only: not part of scope
Installation/issue: _____

2. Commissioning

Goals: In Compliance ☐ Yes ☐ No ☐ N/A
Not due to: _____
Mission predictor: _____ Building/Issue: _____
Not LDC: _____ Renovation only: not part of scope
Installation/issue: _____

(i) Systems commissioned: _____

2. Optimize Energy Performance

3. Energy Efficiency

Goals: In Compliance ☐ Yes ☐ No ☐ N/A
Not due to: _____
Mission predictor: _____ Building/Issue: _____
Not LDC: _____ Renovation only: not part of scope
Installation/issue: _____

(i) Energy Savings Below Baseline %: _____

LEED v4.1 BD+C: Healthcare
Project Checklist

Y **P** **F** **N** **U**

Prerequisite **Prerequisite** **Prerequisite** **Prerequisite** **Prerequisite**

Location and Transportation **9**

LEED for Neighborhood Development location **9**
Sustainable Land Use **1**
High Priority Site and Equitable Development **2**
Surrounding Density and Distinctive Mark **2**
Access to Quality Transit **1**
Bicycle Facilities **1**
Reduced Parking Footprint **1**
Electric Vehicles **1**

Sustainable Sites **9**

Construction Activity Pollution Prevention **Required**
Environmental Site Assessment **Required**
Site Assessment **1**
Preconstruction Erosion Control **1**
Open Space **1**
Rainwater Management **2**
Heat Island Reduction **1**
Light Pollution Reduction **1**
Flowers of Origin **1**
Direct Exterior Runoff **1**

Water Efficiency **11**

Outdoor Water Use Reduction **Required**
Indoor Water Use Reduction **Required**
Building Level Water Metering **Required**
Outdoor Water Use Reduction **1**
Indoor Water Use Reduction **2**
Optimize Process Water Use **1**
Water Metering **1**

Energy and Atmosphere **35**

Federal Commissioning and Verification **Required**
Minimum Energy Performance **Required**
Building Level Energy Metering **Required**
Federal Energy Management **Required**
Energy Commissioning **1**
Optimize Energy Performance **18**
Advanced Energy Metering **1**
Grid Interconnection **2**
Renewable Energy **5**
Enhanced Refrigerant Management **1**



“S” Submittals

- **Required for each applicable building within a project for “sustainable Federal buildings.” “S” Submittals:**
 - Are required to prove sustainability requirements are met
 - Tie back to UFGS 01 33 29
 - Appear on Submittal Register
 - Are also used for TPC requirements
 - Edit for additional “S” submittals as needed.
- **For FSRM projects:**
 - Complete an initial draft of HPSB Checklist to determine crosswalk of requirements with project scope of work and save to project folder.
 - If UFGS 01 33 29 is not included, delete “S” submittal requirements in project specs.
 - Keep the minimum sustainability thresholds within each UFGS Master spec.

“S” Submittals – Example for SpecsIntact Editors



1.4 Submittal

SD-03 Product Data

Carpet, G

Recycled content of carpet, S

2.2.2 <SUB>Carpet<SUB>

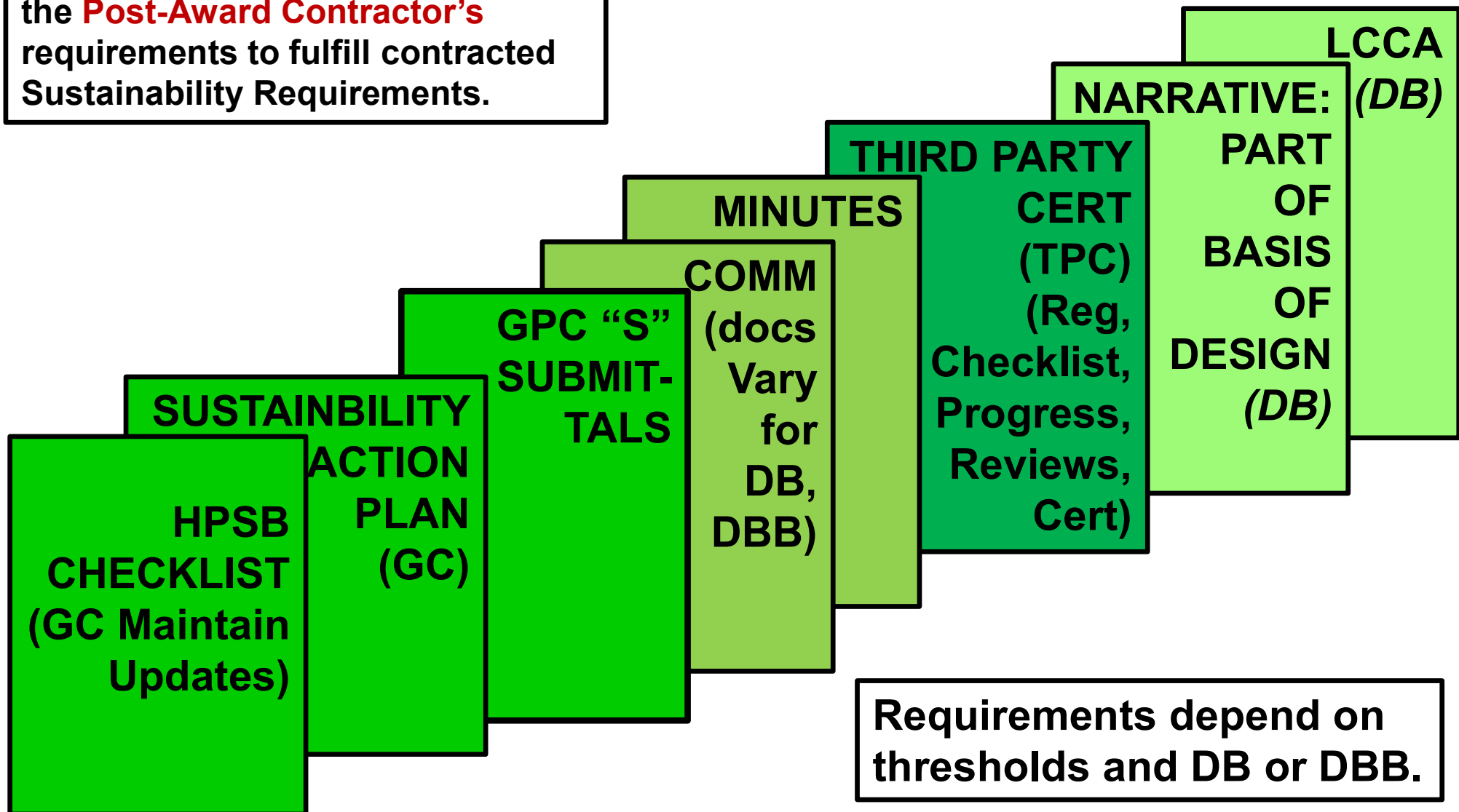
“Provide carpet..color...loop...yarn wt...20 percent recycled content yarn and 100 percent recycled backing...Provide proof of **<SUB>recycled content of carpet<SUB>.**”

- Because this is all part of the entire product data paragraph, the recycled content will be part of the SD-03 Product Data submittal, but the “S” submittal portion is a separate package that can be filed in the “Sustainability eNotebook.”

Sustainability eNotebook



This is an **electronic** file, capturing the **Post-Award Contractor's** requirements to fulfill contracted Sustainability Requirements.



Requirements depend on thresholds and DB or DBB.

Prepare the Sustainability eNotebook



Organize the documentation:

1. Set up electronic filing system.
2. Copy UFC 1-200-02 paragraph (or GP) numbering system and include sub-topics (ex: label each applicable UFGS that requires one or more “S” submittals.)
3. Collect documentation as soon as it is received, label each file, and store it in the file structure.
4. Create tracking spreadsheet and update continuously – include tabs for each section of the UFC 1-200-02 paragraph (or GP) .
5. Set up submittal document with bookmarked title page, table of content (should match the electronic filing system), UFC 1-200-02 paragraph (or GP) title pages, and sub-pages.
6. **DO NOT PRINT!** This is intentionally an ELECTRONIC file!
7. For more details, refer to Third Party Certification programs instructions, webinars, and training.

Back-up: Criteria Program Overview

Criteria Program

Background and Authorities



1988 Public Building Act

1995 PL 104-113 National Tech Transfer and Advancement Act

1998 OMB Cir 119 Fed Participation in the Development and Use of Voluntary Consensus Stds

10 U.S.C. §2451 / 2452 / 2457

1997 House Report 105-247

1998 MILCON Appropriations Act

Federal agencies shall maximize use of consensus standards and codes

DoD shall standardize and unify [facilities] criteria

IMPLEMENTATION

DoDI 4120.24 Defense Standardization Program

DoDD 4270.5 Military Construction

DoD Installations Policy Board Establishes Tri Service Engineering Senior Executive Panel (ESEP) to Oversee Program (1999)

**MIL STANDARD 3007
DoD Unified Facilities Criteria (UFC)
and Guide Specifications (UFGS)
Program**

Criteria Program Organization



Office of Sec of Defense (OSD)

Army

Navy

Air Force

Engineering Senior Executive Panel (ESEP)	Dep Assist Sec of Def (Construction)	Chief, Engineering & Construction USACE	Chief Engineer NAVFAC	Deputy Director of Civil Engineers (HAF/A4C) HQ USAF
--	--------------------------------------	---	-----------------------	--

PROGRAM GUIDANCE, RESOURCING, AND CRITERIA APPROVAL

Coordinating Panel (CP)	ODASD(Con)	USACE	NAVFAC	AFCEC
--------------------------------	------------	-------	--------	-------

PROGRAM MANAGEMENT

Working Groups (WG)	Cost / Comp Plan / Contingency Eng / Medical / Security / Sustainability / Renewable Energy Gen / Utility Control	Architecture / Aviation / Civil / Comprehensive Planning / Construction / Contingency Engineering / Cost Engineering / Design-Build / Electrical / Facility Space Planning / Fire Protection / Fuels / Geotechnical / Medical / Mechanical / Pavements/Airfields / Renewable Energy Generation / Security / Specifications / Structural / Sustainability / Control Systems / Waterfront
----------------------------	---	---

DOCUMENT PRODUCTION

UNIFIED FACILITIES CRITERIA AND GUIDE SPECIFICATIONS

Criteria Program Notes



- ESEP serve as the overarching program steering committee, fielding congressional issues to the managers, and final approvals for criteria publications
- CP represent each Service, and approve criteria projects and documents before going to ESEP
- Criteria Managers represent each Service on each WG and produce criteria documents, based on industry change or Agency/OSD/Federal need
 - A few WG have OSD representation, due to Federal policy and/or reporting requirements
 - Functional WGs produce programmatic criteria that affects several disciplines; Discipline WGs produce discipline-specific criteria

DoD Facility Criteria Strategy



Whole Building Design
Guide www.wbdg.org

Local/Installation requirements

SPECIFICATIONS (UFGS)

DoD Service Life

40-55 yrs. vice 20 yrs. Commercial

QUALITY

System/material
Performance level

UFC (Facility-33±/Specialty-126±)

DB Templates & Standard Designs

FUNCTION

Intended use of the facility

UFC (Core-28±)

ENHANCED

Legislation & Policy

ATFP/Accessibility/Energy/Sustainability

UFC 1-200-01

UFC 1-200-02

Bridge

BASIC SAFETY & PERFORMANCE

Consensus Codes IBC, IMC, IPC, NFPA, ASHRAE,
NEC Minimum Level of Safety and Performance

**INDUSTRY
STANDARDS**



Criteria – UFC & UFGS

Number as documents fluctuate; provide planning, design, construction, sustainment, restoration, modernization criteria; documents use commercial standards

26	Core UFCs	Consists of general building requirements, high performance mandates, and discipline specific systems found in most all buildings. Focus on building code compliance, life safety, legislation compliance, & performance Refer to UFC 1-200-01 for list of Core UFCs
23	Facility Type UFC and FC	(Fitness Centers ,CDCs, Fire Stations, etc.): Tri-Service and Service-specific. Focus on mission, function, space, amenities, and QOL.
126	Specialty UFCs	Less frequent usage but contains important unique requirements (Piers, mooring, dockside utilities, ranges, master planning, airfield pavements & drainage, petroleum fuel facilities, boiler control systems, security engineering, cathodic protection, & etc.)
737	UFGS	Quality intended for 40-55-year service life (vice 20yrs in commercial sector) TOC and lessons learned based.

Priorities: Unified Facilities Criteria (UFC)



- Know these documents, which are applicable to all projects:
 - [UFC 1-200-01 DoD Building Code](#)
 - As authorized by MIL-STD-3007; IBC-based
 - [UFC 1-200-02 High Performance and Sustainable Building Requirements](#)
 - Federal and DoD minimum sustainability requirements
 - [UFC 1-300-02 Unified Facilities Guide Specifications \(UFGS\) Format Standard, with Change 3](#)
 - How to format specs in required SpecsIntact format
 - [UFC 4-010-01 DoD Minimum Antiterrorism Standards for Buildings](#)
- Utilize Core UFCs, which apply to most projects
- Utilize Discipline-specific criteria as appropriate to projects

DoD Criteria

www.wbdg.org



DoD Page
Link



FEDERAL FACILITY CRITERIA ▾	WHOLE BUILDING DESIGN ▾	CONTINUING EDUCATION	ADDITIONAL RESOURCES ▾	SEARCH
DEPT. OF DEFENSE	DEPT. OF VETERANS AFFAIRS	GENERAL SERVICES ADMIN.	LOGIN	CREATE ACCOUNT
ARMY USACE	DEPT. OF ENERGY	NASA		
NAVY NAVFAC	DEPT. OF HOMELAND SECURITY	NAT. INSTITUTES OF HEALTH		
AIR FORCE AFCEC	DEPT. OF STATE	NAT. PARK SERVICE		
AIR NATIONAL GUARD	DEPT. OF TRANSPORTATION	SMITHSONIAN INSTITUTION		
WASHINGTON HQ SERVICES	ENVIRON. PROTECTION AGENCY	U.S. ACCESS BOARD		
DEFENSE HEALTH AGENCY				



Thank you for visiting the Whole Building Design Guide. Currently the WBDG is offering limited features as the NIBS team works diligently to bring the entirety of WBDG services back online. [Learn more](#) or reach out to WBDG Support at wbdg@nibs.org for additional assistance.

The WBDG Federal Facility Criteria section is an extensive electronic library of construction guide specifications, manuals, standards and many other essential criteria documents. Published and updated continuously, this library contains the complete unabridged, approved, current electronic equivalents of over 6,000 documents direct

DoD Criteria - Links

www.wbdg.org



FEDERAL FACILITY CRITERIA ▾ WHOLE BUILDING DESIGN ▾ CONTINUING EDUCATION ▾ ADDITIONAL RESOURCES ▾ SEARCH

LOGIN CREATE ACCOUNT

Department of Defense

HOME > DEPARTMENT OF DEFENSE

✓ Thank you for visiting the Whole Building Design Guide. Currently the WBDG is offering limited features as the NIBS team works diligently to bring the entirety of WBDG services back online. [Learn more](#) or reach out to WBDG Support at wbdg@nibs.org for additional assistance.

UNIFIED FACILITIES CRITERIA PROGRAM

The Department of Defense (DoD) initiated the Unified Facilities Criteria Program to unify all technical criteria (UFCs) and guide specifications (UGS) pertaining to planning, design, construction, and operation and maintenance of real property facilities. The program streamlines the military criteria system by eliminating duplication of information, increasing reliance on private-sector standards, and creating a more efficient criteria development and publishing process. Administered by the [United States Army Corps of Engineers](#) (HQUSACE), [Naval Facilities Engineering Systems Command](#) (NAVFAC), and the [Air Force Civil Engineer Center](#) (AFCEC), the UFC Program organizes numerous working groups with one or more experts from each participating organization to develop the technical publications. Further information on the UFC program can be found in [MIL-STD-3007](#) and in the [UFC program report](#). From the last fiscal year, [UFC 1-300-01](#) and [UFC 1-300-02](#) also provide information on developing UFC documents.

Previously, each service had its own publishing system resulting in criteria being disseminated in different formats. [UFC](#) and [UGS](#) documents have a uniform format and a standardized numbering scheme. Though unification of all DoD criteria is the ultimate goal, there are instances when a particular document may not apply to all services, or some documents may have not been fully revised to reflect all service requirements before being issued in the system. See the introduction to the UFC and UGS document libraries for more information.

In 1989, DoD adopted the Construction Criteria Base (CCB) information system as the official distribution method for facilities criteria. Over the years, the military services have been instrumental in the advancement of CCB and in 2003 adopted its evolution into the Whole Building Design Guide (WBDG).

PUBLICATIONS, GUIDELINES & DIRECTIVES

The documents below are available as Adobe Acrobat PDFs. [PDF icon](#)

- DoD Unified Facilities Criteria Program FY2023 Program Review (Posted 03-2024)
- Memorandum of Understanding for the Specifications-Kept-Intact (SpecsIntact) System (09-16-2014)
- Office of the Under Secretary of Defense Memorandum: DoD Sustainable Buildings Policy (11-10-2013)
- Memorandum of Army Sustainable Design and Development Policy Update - SPIRIT to LEED Transition (01-05-2006)
- Memorandum of Understanding for the Unified Facilities Guide Specifications (03-14-2005)
- Tri-Service Coordination Sheet
- Navy Coordination Sheets
- Memorandum of Agreement for the Whole Building Design Guide (10-08-2003)
- Working Groups Charter (09-23-2003)
- Memorandum on Department of Defense Unified Facilities Criteria (05-29-2002)
- Memorandum of Understanding on Unified Design Guidance (07-08-1998)
- Tri-Service Design Guidance Coordinating Panel Charter (07-08-1998)

Related Links

- Non-Government Standards (Limited Access) - Contact WBDG Support for access
- Military Standards: ASSIST database
- Corrosion Prevention & Control (CPC) Source
- Tri-Services Sustainability Program

SPECIFICATIONS & CRITERIA	#DOCS
UNIFIED FACILITIES GUIDE SPECIFICATIONS (UGS)	737
UNIFIED FACILITIES CRITERIA (UFC)	175
UNIFIED MASTER REFERENCE LIST (UMRL)	1
ENGINEERING AND CONSTRUCTION BULLETINS (ECB)	44
DOD UNIFIED DESIGN GUIDANCE	4
DOD SUPPLEMENTAL TECHNICAL DOCUMENTS	60
DOD HANDBOOKS	3
DOD MANUALS	3
NON-COS STANDARDS	9
EARTH COVERED MAGAZINE DESIGNS	2
MILITARY HEALTH SYSTEM (MHS): DOD SPACE PLANNING CRITERIA FOR HEALTH FACILITIES	36
MILITARY HEALTH SYSTEM (MHS) TEMPLATES	86
MIL-STD-1691 MILITARY MEDICAL AND DENTAL FACILITIES	1
FEDERAL AND MILITARY SPECIFICATIONS AND STANDARDS	2

UFC
UGS

Tri-Service
Sustainability
Program

Criteria Strategy Notes



- **Goals of criteria include DoD consolidation and industry alignment**
- **2014 Study of 104 criteria core documents (UFCs and UFGSs.) Study excluded Federal, DoD, Service requirements (ATFP, sustainability, Energy, Davis-Bacon wages, Pass Office requirements, etc.) The remaining criteria results:**
 - **Over 86% of the studied documents completely align with industry, and the number is rising all the time.**