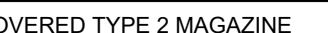
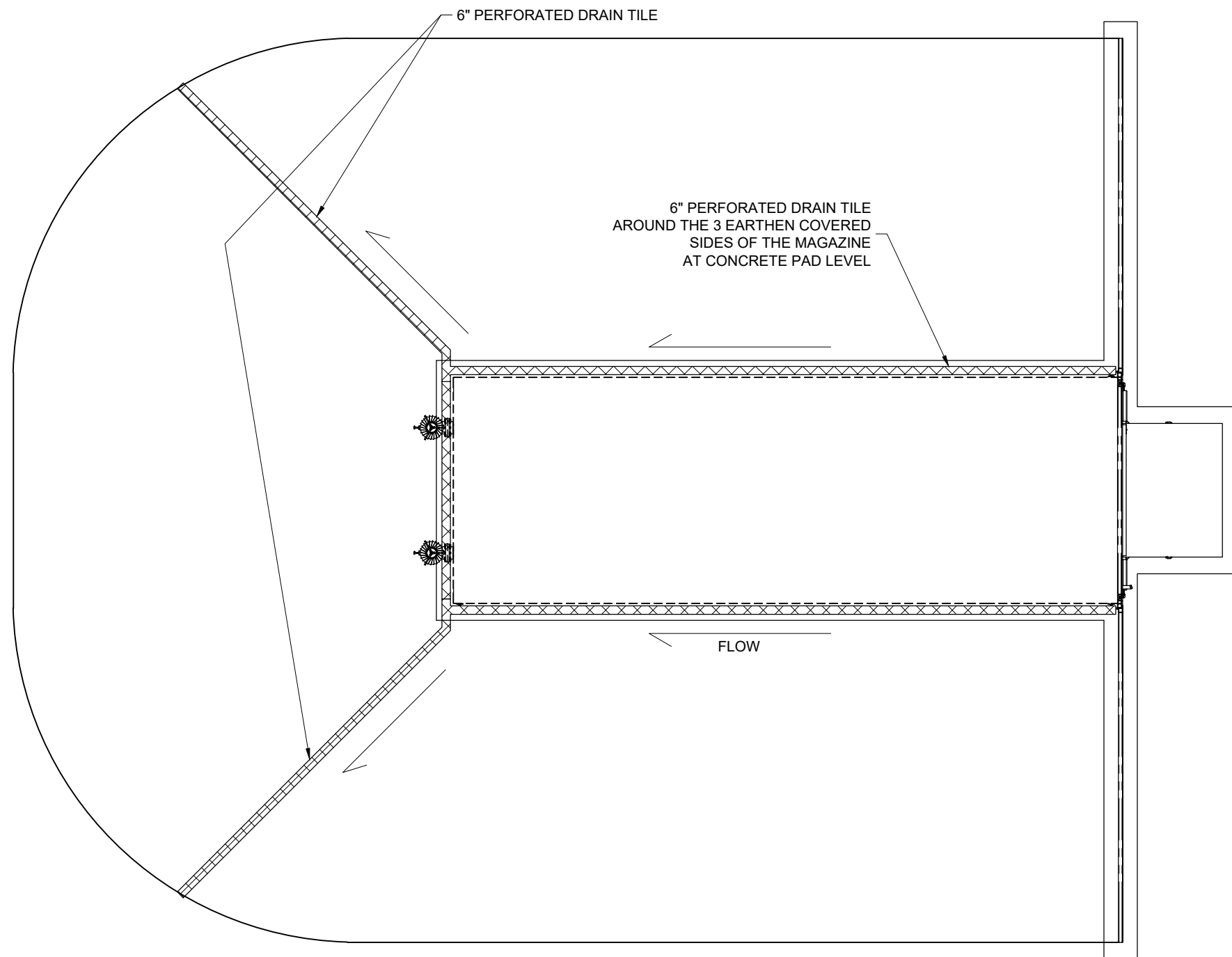


SHIPPING DIMENSIONS


LEGEND: <div><div>⊙</div><div>⊕</div><div>⊕</div><div>DS</div><div>SS</div><div>EMR</div><div>T</div><div>S</div><div>SM</div><div>PIR</div><div>BT</div></div>	LEGEND CONTINUED: <div><div>⊕</div><div>⊕</div></div>	UNLESS OTHERWISE NOTED, TOLERANCES ARE: FRACTIONS: ±1/16 ANGLES: ±1° MACHINED SURFACES: 125 MICRO-INCHES THESE TOLERANCES DO NOT APPLY TO BASIC DIMS. DRAWN TO SCALE UNLESS OTHERWISE NOTED THIS DRAWING IS THE PROPERTY OF ARMAG CORPORATION WHO CLAIMS PROPRIETARY RIGHTS IN THE MATERIAL DISCLOSED. IT IS ISSUED IN CONFIDENCE FOR ENGINEERING INFORMATION ONLY AND MAY NOT BE COPIED OR USED FOR MANUFACTURE OF ANYTHING SHOWN WITHOUT SPECIFIC PERMISSION FROM ARMAG CORPORATION	UNIT LENGTH 40'	UNIT WIDTH 13'-6"	UNIT HEIGHT 9'	<div>ARMAG®</div> <div>CORPORATION</div> <div>Manufacturers of Arms Vaults and Explosive Storage magazines since 1969</div> <div>300 ARMAG AVE. • BARDSTOWN, KY 40004 • PHONE: (800) 443-9994 • FAX: (502) 348-4801 • EMAIL: info@armagcorp.com</div>	DESCRIPTION 3-BAR EARTHEN COVERED TYPE 2 MAGAZINE SHIPPING AND INSTALLATION INFORMATION LINING	DRAWN BY CMS	REVISION 03		
			UNIT SPEC -					DATE DRAWN 12/17/2024	APPROX. SHIPPING WT. IN LBS 65,000		
			UNIT TYPE ECM					APPROVED BY -			
			CUSTOMER					SHEET SIZE B			
			LOCATION					SCALE 1:96	DRAWING NO. S1412		
								SERIAL #	QUOTE #		

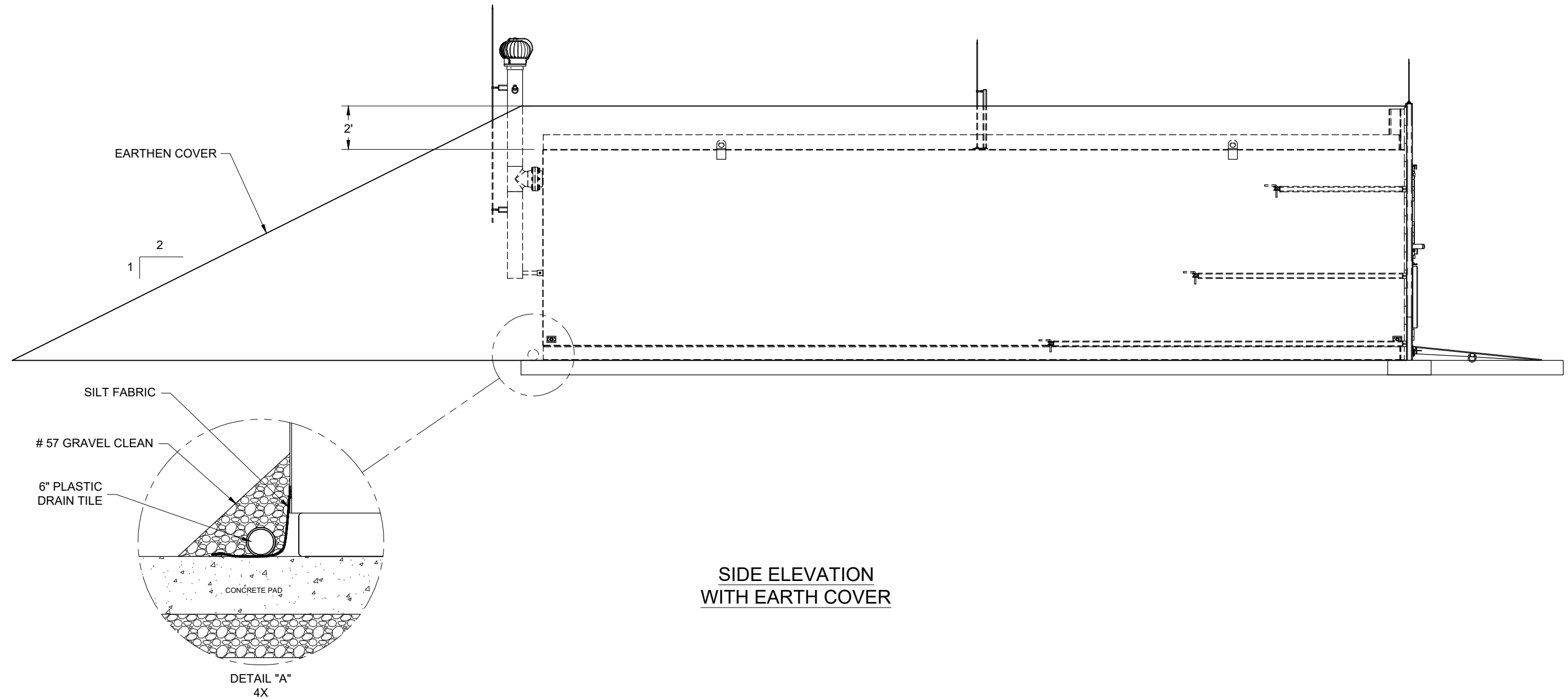


LEGEND:		LEGEND CONTINUED:		UNLESS OTHERWISE NOTED, TOLERANCES ARE: FRACTIONS: ±1/16 ANGLES: ±1° MACHINED SURFACES: 125 MICRO-INCHES THESE TOLERANCES DO NOT APPLY TO BASIC DIMS. DRAWN TO SCALE UNLESS OTHERWISE NOTED		UNIT LENGTH 40'		UNIT WIDTH 13'-6"		UNIT HEIGHT 9'		<div><p>ARMAG[®] C O R P O R A T I O N</p><p>Manufacturers of Arms Vaults and Explosive Storage magazines since 1969</p><p>300 ARMAG AVE. • BARDSTOWN, KY 40004 • PHONE: (800) 443-9994 • FAX: (502) 348-4801 • EMAIL: info@armagcorp.com</p></div>		<div><p>DESCRIPTION 3-BAR EARTHEN COVERED TYPE 2 MAGAZINE SHIPPING AND INSTALLATION INFORMATION</p><p>LINING</p></div>				DRAWN BY CMS		REVISION 03	
KILL SWITCH		THERMOSTAT		UNIT SPEC -		UNIT TYPE ECM		CUSTOMER		DATE DRAWN 12/17/2024								APPROVED BY -		APPROX. SHIPPING WT. IN LBS	
DURESS		GROUND		THIS DRAWING IS THE PROPERTY OF ARMAG CORPORATION WHO CLAIMS PROPRIETARY RIGHTS IN THE MATERIAL DISCLOSED. IT IS ISSUED IN CONFIDENCE FOR ENGINEERING INFORMATION ONLY AND MAY NOT BE COPIED OR USED FOR MANUFACTURE OF ANYTHING SHOWN WITHOUT SPECIFIC PERMISSION FROM ARMAG CORPORATION		LOCATION		SERIAL #		QUOTE #								SHEET SIZE B		65,000	
ELECTRIC RECEPTACLE																		SCALE 1:48		DRAWING NO. S1412	
DOUBLE STACKED																		SHEET 3 OF 7			
SS																					
ECMR																					
P																					
LAN																					
SSM																					
PIR																					
BTM																					
BULLET TRAP																					


















DRAINAGE PLAN

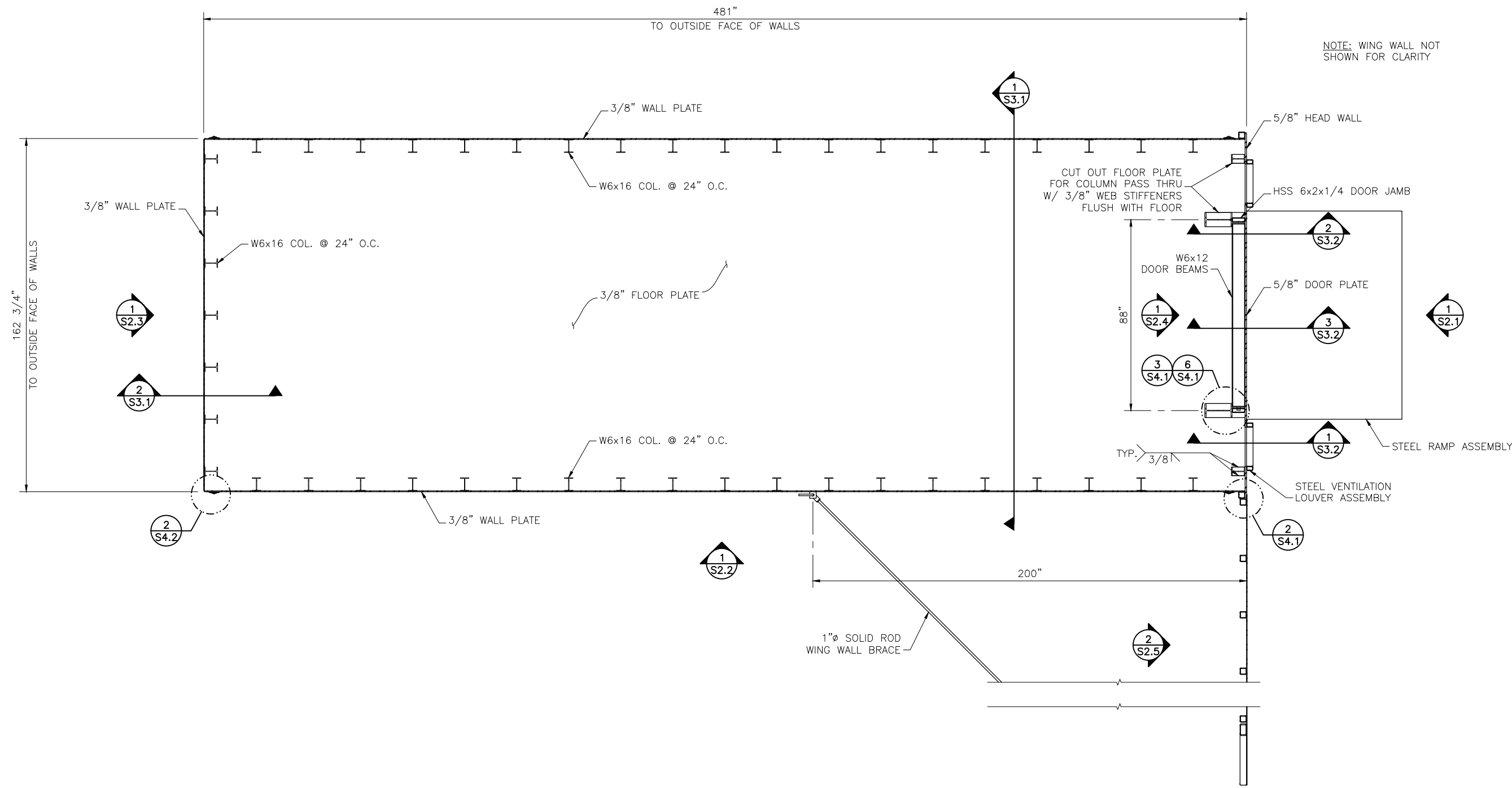
LEGEND:		LEGEND CONTINUED:		UNLESS OTHERWISE NOTED, TOLERANCES ARE: FRACTIONS: ±1/16 ANGLES: ±1° MACHINED SURFACES: 125 MICRO-INCHES THESE TOLERANCES DO NOT APPLY TO BASIC DIMS. DRAWN TO SCALE UNLESS OTHERWISE NOTED		UNIT LENGTH 40'		UNIT WIDTH 13'-6"		UNIT HEIGHT 9'		<div> ARMAG CORPORATION Manufacturers of Arms Vaults and Explosive Storage magazines since 1969 <small>300 ARMAG AVE. • BARDSTOWN, KY 40004 • PHONE: (800) 443-9994 • FAX: (502) 348-4801 • EMAIL: info@armagcorp.com</small></div>		DESCRIPTION 3-BAR EARTHEN COVERED TYPE 2 MAGAZINE SHIPPING AND INSTALLATION INFORMATION		DRAWN BY CMS		REVISION 03	
KILL SWITCH		THERMOSTAT		THIS DRAWING IS THE PROPERTY OF ARMAG CORPORATION WHO CLAIMS PROPRIETARY RIGHTS IN THE MATERIAL DISCLOSED. IT IS ISSUED IN CONFIDENCE FOR ENGINEERING INFORMATION ONLY AND MAY NOT BE COPIED OR USED FOR MANUFACTURE OF ANYTHING SHOWN WITHOUT SPECIFIC PERMISSION FROM ARMAG CORPORATION		UNIT SPEC -								DATE DRAWN 12/17/2024		APPROVED BY -		APPROX. SHIPPING WT. IN LBS 65,000	
DURESS		GROUND				UNIT TYPE ECM								SHEET SIZE B					
ELECTRIC RECEPTACLE						CUSTOMER								SCALE 1:96				DRAWING NO. S1412	
DOUBLE STACKED						LOCATION								SHEET 5 OF 7					
SS						SERIAL #				QUOTE #				LINING					
EMERGENCY LIGHT																			
TELEPHONE JACK																			
LAN CONNECTION																			
SEISMIC SENSOR																			
SMOKE DETECTION																			
PIR																			
BULLET TRAP																			



LEGEND:		LEGEND CONTINUED:		UNLESS OTHERWISE NOTED, TOLERANCES ARE: FRACTIONS: ±1/16 ANGLES: ±1° MACHINED SURFACES: 125 MICRO-INCHES THESE TOLERANCES DO NOT APPLY TO BASIC DIMS. DRAWN TO SCALE UNLESS OTHERWISE NOTED THIS DRAWING IS THE PROPERTY OF ARMAG CORPORATION WHO CLAIMS PROPRIETARY RIGHTS IN THE MATERIAL DISCLOSED. IT IS ISSUED IN CONFIDENCE FOR ENGINEERING INFORMATION ONLY AND MAY NOT BE COPIED OR USED FOR MANUFACTURE OF ANYTHING SHOWN WITHOUT SPECIFIC PERMISSION FROM ARMAG CORPORATION		UNIT LENGTH 40'		UNIT WIDTH 13'-6"		UNIT HEIGHT 9'		<div>ARMAG®</div> <div>C O R P O R A T I O N</div> <div>Manufacturers of Arms Vaults and Explosive Storage magazines since 1969</div> <div>300 ARMAG AVE. • BARDSTOWN, KY 40004 • PHONE: (800) 443-9994 • FAX: (502) 348-4801 • EMAIL: info@armagcorp.com</div>		DESCRIPTION 3-BAR EARTHEN COVERED TYPE 2 MAGAZINE SHIPPING AND INSTALLATION INFORMATION		DRAWN BY CMS		REVISION 03	
KILL SWITCH		THERMOSTAT				UNIT SPEC -		UNIT TYPE ECM		DATE DRAWN 12/17/2024						APPROVED BY -		APPROX. SHIPPING WT. IN LBS 65,000	
DS DOUBLE STACKED		⤵ GROUND				CUSTOMER													
SS SINGLE STACKED						LOCATION								LINING		SHEET B			
EMR EMERGENCY LIGHT						SERIAL #				QUOTE #						SCALE 1:60			
J TELEPHONE JACK																DRAWING NO. S1412			
LAN LAN CONNECTION																SHEET 6 OF 7			
SSM SEISMIC SENSOR																			
SD SMOKE DETECTION																			
PIR PIR																			
BT BULLET TRAP																			



LEGEND:  KILL SWITCH  DURESS  ELECTRIC RECEPTACLE  DS DOUBLE STACKED  SS SINGLE STACKED  EMR EMERGENCY LIGHT  T TELEPHONE JACK  LAN LAN CONNECTION  SE SEISMIC SENSOR  SM SMOKE DETECTION  PIR PIR  BT BULLET TRAP	LEGEND CONTINUED:  THERMOSTAT  GROUND	UNLESS OTHERWISE NOTED, TOLERANCES ARE: FRACTIONS: +1/16 ANGLES: ±1° MACHINED SURFACES: 125 MICRO-INCHES THESE TOLERANCES DO NOT APPLY TO BASIC DIMS. DRAWN TO SCALE UNLESS OTHERWISE NOTED THIS DRAWING IS THE PROPERTY OF ARMAG CORPORATION WHO CLAIMS PROPRIETARY RIGHTS IN THE MATERIAL DISCLOSED. IT IS ISSUED IN CONFIDENCE FOR ENGINEERING INFORMATION ONLY AND MAY NOT BE COPIED OR USED FOR MANUFACTURE OF ANYTHING SHOWN WITHOUT SPECIFIC PERMISSION FROM ARMAG CORPORATION	UNIT LENGTH 40' UNIT SPEC - UNIT TYPE ECM CUSTOMER	UNIT WIDTH 13'-6" UNIT HEIGHT 9'	 Manufacturers of Arms Vaults and Explosive Storage magazines since 1969 300 ARMAG AVE. • BARDSTOWN, KY 40004 • PHONE: (800) 443-9994 • FAX: (502) 348-4801 • EMAIL: info@armagcorp.com	DESCRIPTION 3-BAR EARTHEN COVERED TYPE 2 MAGAZINE SHIPPING AND INSTALLATION INFORMATION	DRAWN BY CMS DATE DRAWN 12/17/2024 APPROVED BY - SHEET SIZE B	REVISION 03 APPROX. SHIPPING WT. IN LBS 65,000 DRAWING NO. S1412
LINING						SCALE 1:48 SHEET 7 OF 7		



1 FLOOR PLAN
S1.2 SCALE=1:50

NOTES:

UNLESS OTHERWISE NOTED, TOLERANCES ARE:
FRACTIONS: $\pm 1/16$ ANGLES: $\pm 1^\circ$
MACHINED SURFACES: 125 MICRO-INCHES
THESE TOLERANCES DO NOT APPLY TO BASIC DIMS.
DRAWN TO SCALE UNLESS OTHERWISE NOTED

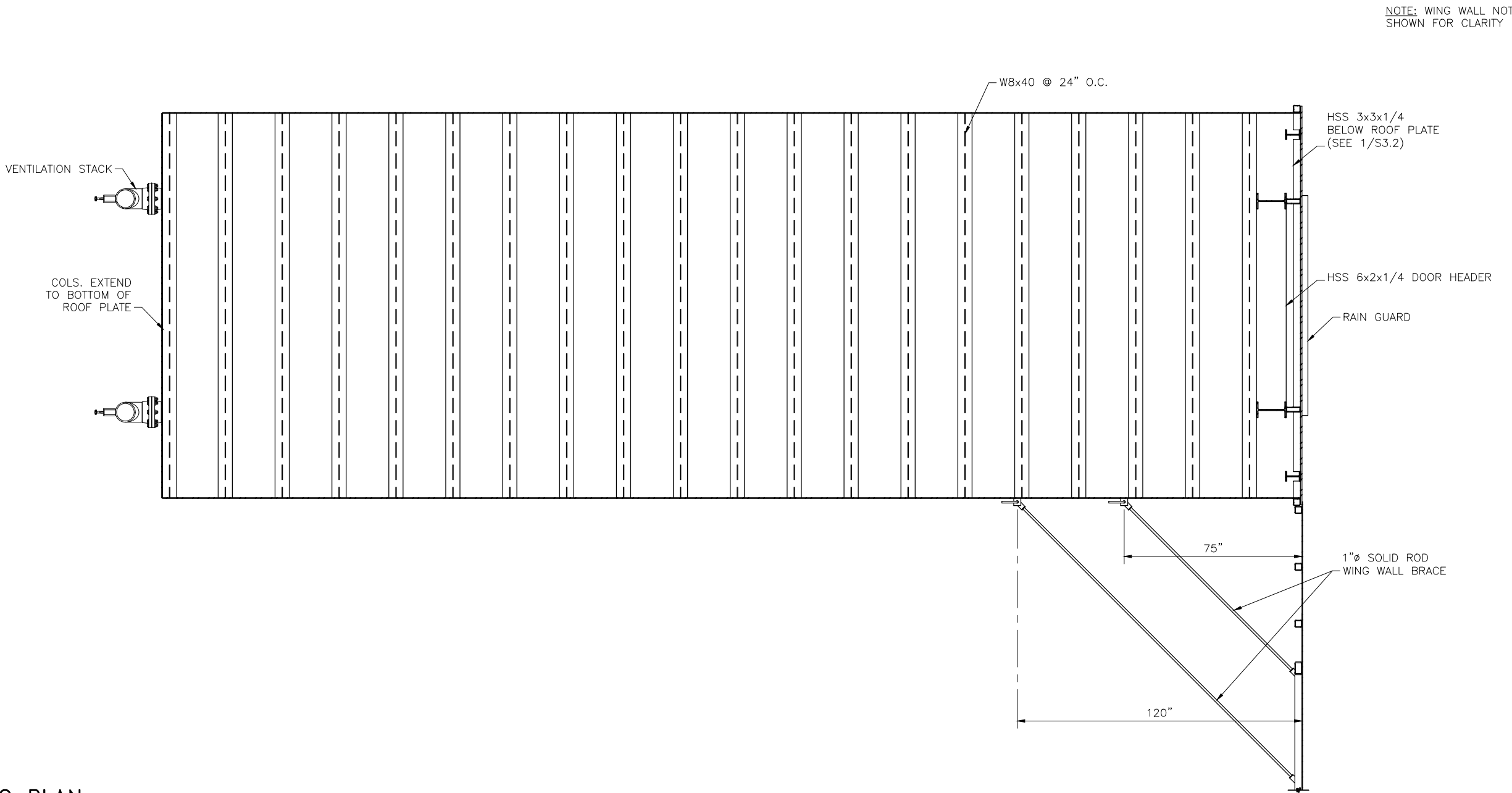
THIS DRAWING IS THE PROPERTY OF ARMAG CORPORATION WHO CLAIMS PROPRIETARY RIGHTS IN THE MATERIAL DISCLOSED. IT IS ISSUED IN CONFIDENCE FOR ENGINEERING INFORMATION ONLY AND MAY NOT BE COPIED OR USED FOR MANUFACTURE OF ANYTHING SHOWN WITHOUT SPECIFIC PERMISSION FROM ARMAG CORPORATION.



DESCRIPTION
40' X 13'-6" X 9' 3-BAR EARTHEN COVERED TYPE 2
MAGAZINE
FABRICATION DETAILS

MATERIAL
-

DRAWN BY PDM	REVISION 16
DATE DRAWN 12/17/2024	APPROX. SHIPPING WT. IN LBS -
APPROVED BY -	DRAWING NO. S1413
SHEET SIZE B	
SCALE 1:50	
SHEET S1.2	



1 FRAMING PLAN
S1.3 SCALE=1:50

NOTES:

UNLESS OTHERWISE NOTED, TOLERANCES ARE:
FRACTIONS: $\pm 1/16$ ANGLES: $\pm 1^\circ$
MACHINED SURFACES: 125 MICRO-INCHES
THESE TOLERANCES DO NOT APPLY TO BASIC DIMS.
DRAWN TO SCALE UNLESS OTHERWISE NOTED

THIS DRAWING IS THE PROPERTY OF ARMAG CORPORATION WHO CLAIMS PROPRIETARY RIGHTS IN THE MATERIAL DISCLOSED. IT IS ISSUED IN CONFIDENCE FOR ENGINEERING INFORMATION ONLY AND MAY NOT BE COPIED OR USED FOR MANUFACTURE OF ANYTHING SHOWN WITHOUT SPECIFIC PERMISSION FROM ARMAG CORPORATION.

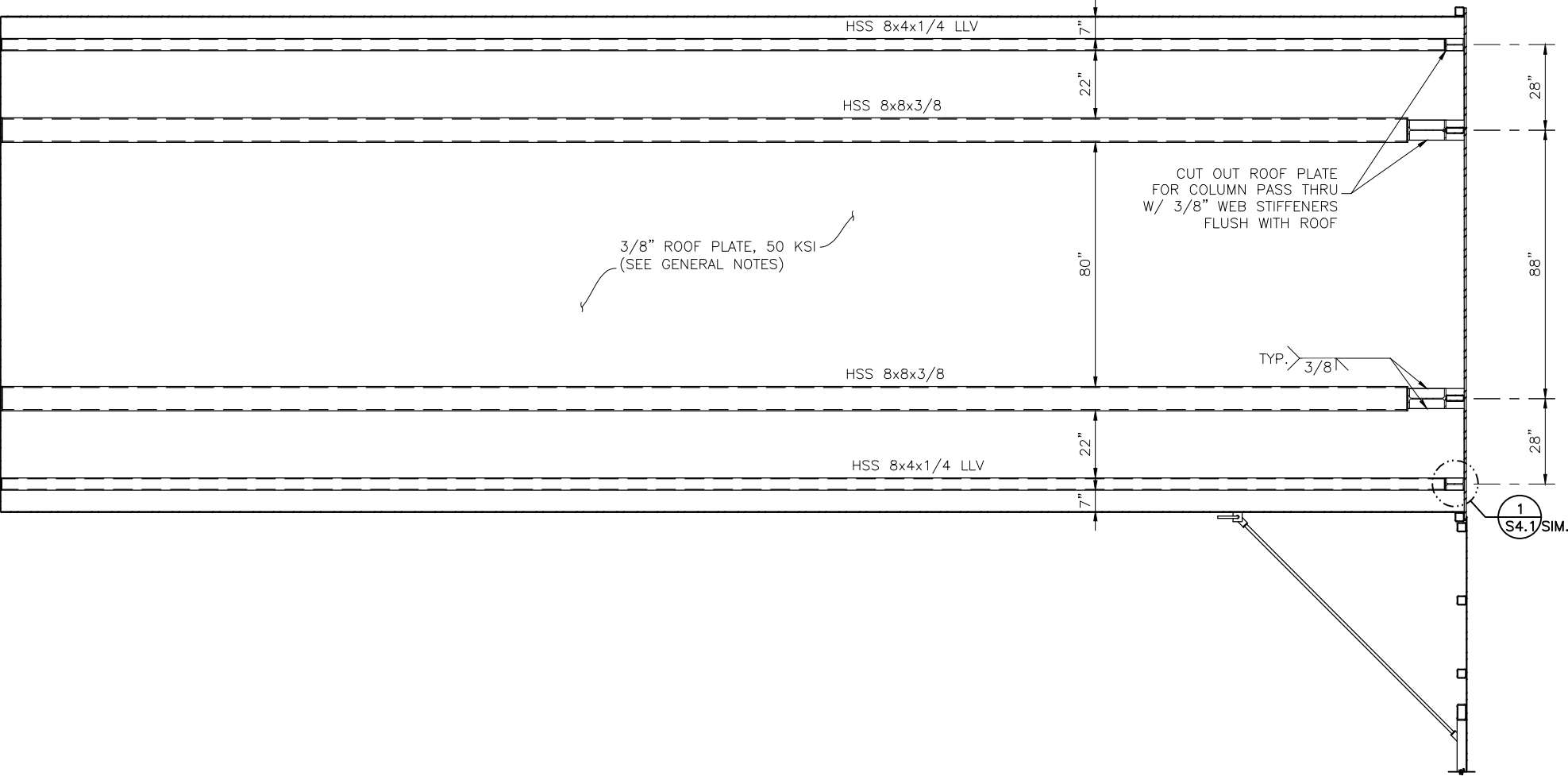


DESCRIPTION
40' X 13'-6" X 9' 3-BAR EARTHEN COVERED TYPE 2
MAGAZINE
FABRICATION DETAILS

MATERIAL
-

DRAWN BY PDM	REVISION 16
DATE DRAWN 12/17/2024	APPROX. SHIPPING WT. IN LBS -
APPROVED BY -	DRAWING NO. S1413
SHEET SIZE B	
SCALE 1:50	
SHEET S1.3	

NOTE: WING WALL NOT SHOWN FOR CLARITY



1 ROOF PLAN
S1.4 SCALE=1:50

NOTES:

UNLESS OTHERWISE NOTED, TOLERANCES ARE:
FRACTIONS: $\pm 1/16$ ANGLES: $\pm 1^\circ$
MACHINED SURFACES: 125 MICRO-INCHES
THESE TOLERANCES DO NOT APPLY TO BASIC DIMS.
DRAWN TO SCALE UNLESS OTHERWISE NOTED

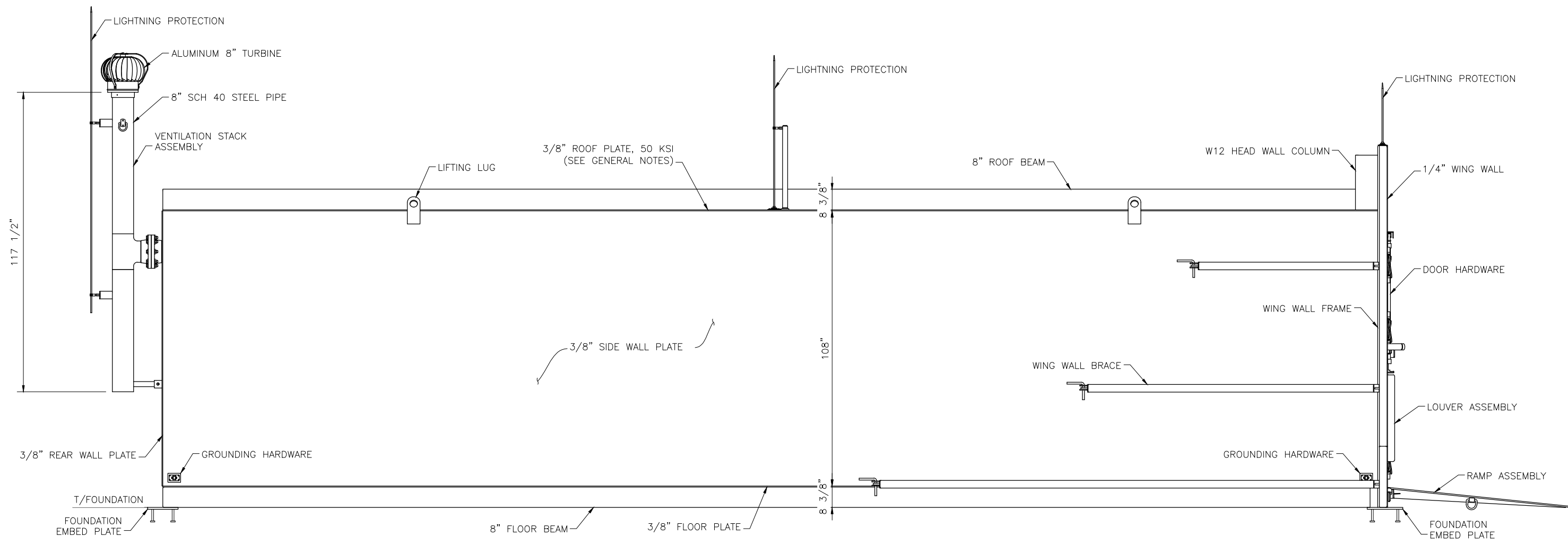
THIS DRAWING IS THE PROPERTY OF ARMAG CORPORATION WHO CLAIMS PROPRIETARY RIGHTS IN THE MATERIAL DISCLOSED. IT IS ISSUED IN CONFIDENCE FOR ENGINEERING INFORMATION ONLY AND MAY NOT BE COPIED OR USED FOR MANUFACTURE OF ANYTHING SHOWN WITHOUT SPECIFIC PERMISSION FROM ARMAG CORPORATION.




DESCRIPTION
40' X 13'-6" X 9' 3-BAR EARTHEN COVERED TYPE 2
MAGAZINE
FABRICATION DETAILS

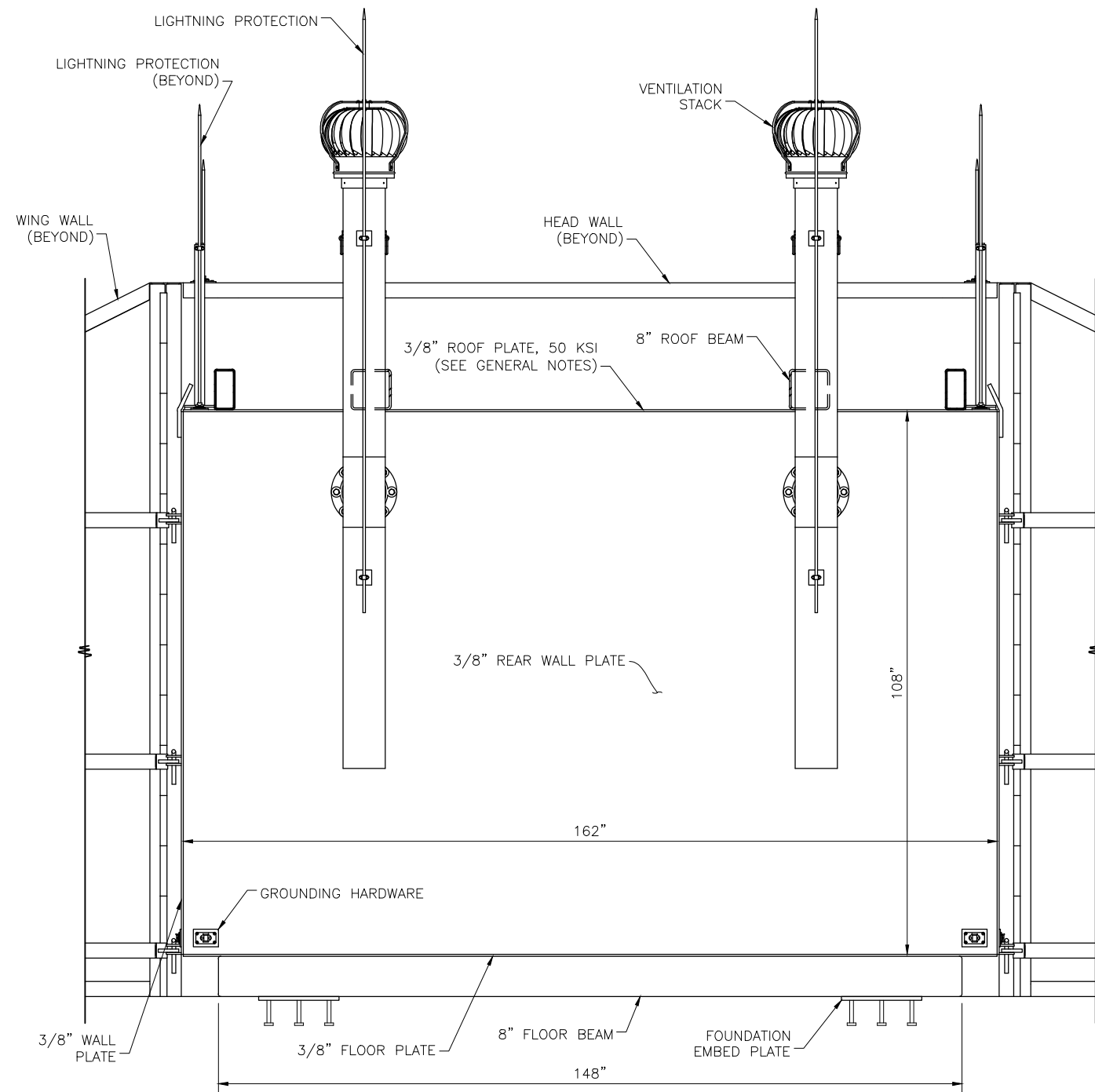
MATERIAL
-

DRAWN BY PDM	REVISION 16
DATE DRAWN 12/17/2024	APPROX. SHIPPING WT. IN LBS -
APPROVED BY -	DRAWING NO. S1413
SHEET SIZE B	
SCALE 1:50	
SHEET S1.4	



1 SIDE ELEVATION
S2.2 SCALE=1:40

NOTES:	UNLESS OTHERWISE NOTED, TOLERANCES ARE: FRACTIONS: ±1/16 ANGLES: ±1° MACHINED SURFACES: 125 MICRO-INCHES THESE TOLERANCES DO NOT APPLY TO BASIC DIMS. DRAWN TO SCALE UNLESS OTHERWISE NOTED	<div><p>ARMAG[®] C O R P O R A T I O N</p><p>Manufacturers of Arms Vaults and Explosive Storage magazines since 1969</p><p>300 ARMAG AVE. • BARDSTOWN, KY 40004 • PHONE: (800) 443-9994 • FAX: (502) 348-4801 • EMAIL: info@armagcorp.com</p></div>	DESCRIPTION	REVISION
			40' X 13'-6" X 9' 3-BAR EARTHEN COVERED TYPE 2 MAGAZINE	PDM 16
	FABRICATION DETAILS		DATE DRAWN 12/17/2024	APPROX. SHIPPING WT. IN LBS
			APPROVED BY -	-
			SHEET SIZE B	
			SCALE 1:40	DRAWING NO. S1413
	MATERIAL -	SHEET S2.2		



1 REAR ELEVATION
S2.3 SCALE=1:30

NOTES:

UNLESS OTHERWISE NOTED, TOLERANCES ARE:
FRACTIONS: $\pm 1/16$ ANGLES: $\pm 1^\circ$
MACHINED SURFACES: 125 MICRO-INCHES
THESE TOLERANCES DO NOT APPLY TO BASIC DIMS.
DRAWN TO SCALE UNLESS OTHERWISE NOTED

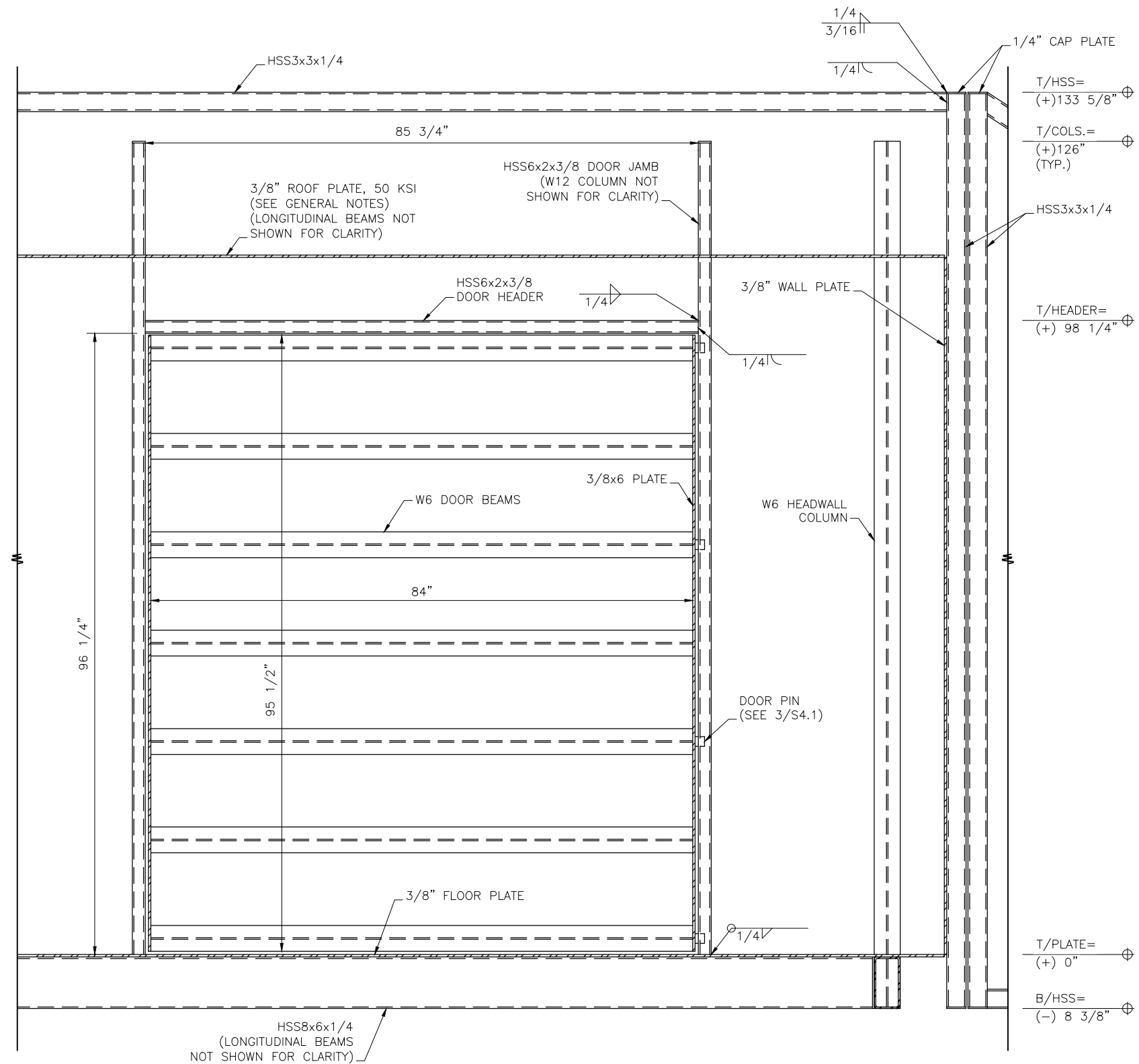
THIS DRAWING IS THE PROPERTY OF ARMAG CORPORATION WHO CLAIMS PROPRIETARY RIGHTS IN THE MATERIAL DISCLOSED. IT IS ISSUED IN CONFIDENCE FOR ENGINEERING INFORMATION ONLY AND MAY NOT BE COPIED OR USED FOR MANUFACTURE OF ANYTHING SHOWN WITHOUT SPECIFIC PERMISSION FROM ARMAG CORPORATION.

ARMAG®
CORPORATION
Manufacturers of Arms Vaults and Explosive Storage magazines since 1969
300 ARMAG AVE. • BARDSTOWN, KY 40004 • PHONE: (800) 443-9994 •
FAX: (502) 348-4801 • EMAIL: info@armagcorp.com

DESCRIPTION
40' X 13'-6" X 9' 3-BAR EARTHEN COVERED TYPE 2
MAGAZINE
FABRICATION DETAILS

MATERIAL

DRAWN BY PDM	REVISION 16
DATE DRAWN 12/17/2024	APPROX. SHIPPING WT. IN LBS -
APPROVED BY -	DRAWING NO. S1413
SHEET SIZE B	
SCALE 1:30	
SHEET S2.3	



1 FRONT INTERIOR ELEVATION
S2.4 SCALE=1:20

NOTES:

UNLESS OTHERWISE NOTED, TOLERANCES ARE:
FRACTIONS: $\pm 1/16$ ANGLES: $\pm 1^\circ$
MACHINED SURFACES: 125 MICRO-INCHES
THESE TOLERANCES DO NOT APPLY TO BASIC DIMS.
DRAWN TO SCALE UNLESS OTHERWISE NOTED

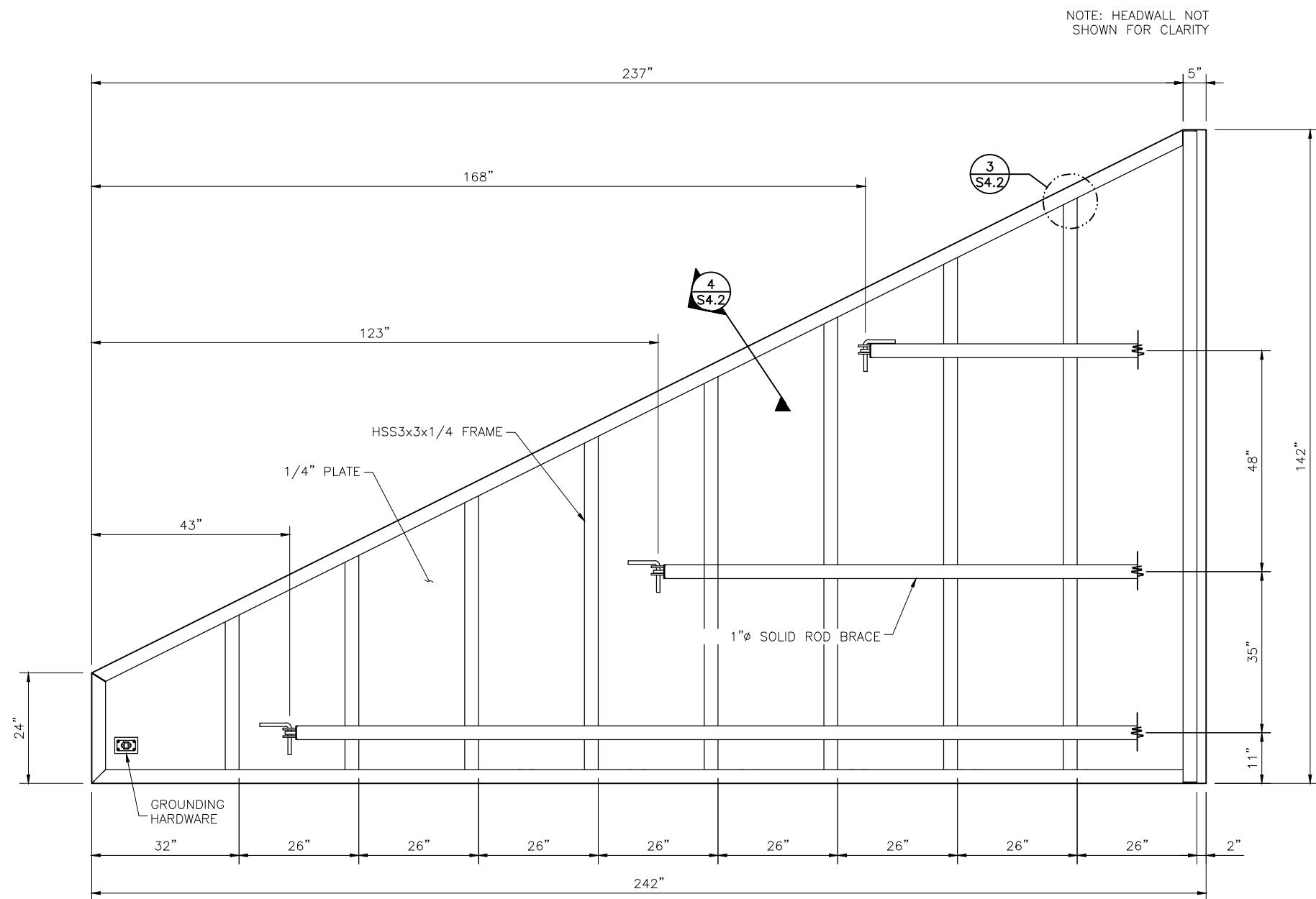
THIS DRAWING IS THE PROPERTY OF ARMAG CORPORATION WHO CLAIMS PROPRIETARY RIGHTS IN THE MATERIAL DISCLOSED. IT IS ISSUED IN CONFIDENCE FOR ENGINEERING INFORMATION ONLY AND MAY NOT BE COPIED OR USED FOR MANUFACTURE OF ANYTHING SHOWN WITHOUT SPECIFIC PERMISSION FROM ARMAG CORPORATION.



DESCRIPTION
40' X 13'-6" X 9' 3-BAR EARTHEN COVERED TYPE 2
MAGAZINE
FABRICATION DETAILS

MATERIAL

DRAWN BY PDM	REVISION 16
DATE DRAWN 12/17/2024	APPROX. SHIPPING WT. IN LBS -
APPROVED BY -	DRAWING NO. S1413
SHEET SIZE B	
SCALE 1:20	
SHEET S2.4	



1 WING WALL ELEVATION
S2.5 SCALE=1:30

NOTES:

UNLESS OTHERWISE NOTED, TOLERANCES ARE:
FRACTIONS: $\pm 1/16$ ANGLES: $\pm 1^\circ$
MACHINED SURFACES: 125 MICRO-INCHES
THESE TOLERANCES DO NOT APPLY TO BASIC DIMS.
DRAWN TO SCALE UNLESS OTHERWISE NOTED

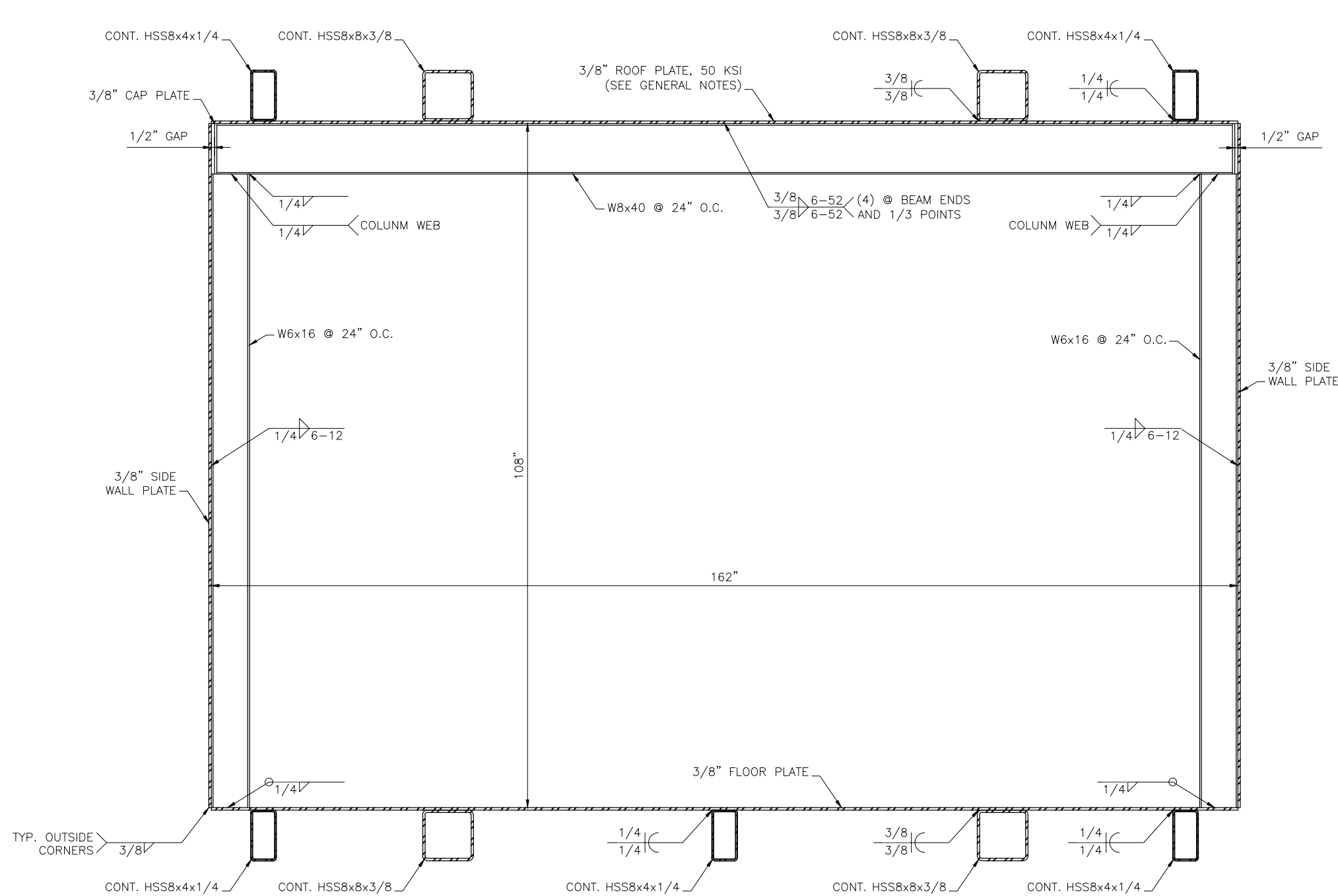
THIS DRAWING IS THE PROPERTY OF ARMAG CORPORATION WHO CLAIMS PROPRIETARY RIGHTS IN THE MATERIAL DISCLOSED. IT IS ISSUED IN CONFIDENCE FOR ENGINEERING INFORMATION ONLY AND MAY NOT BE COPIED OR USED FOR MANUFACTURE OF ANYTHING SHOWN WITHOUT SPECIFIC PERMISSION FROM ARMAG CORPORATION.

ARMAG[®]
CORPORATION
Manufacturers of Arms Vaults and Explosive Storage magazines since 1969
300 ARMAG AVE. • BARDSTOWN, KY 40004 • PHONE: (800) 443-9994 •
FAX: (502) 348-4801 • EMAIL: info@armagcorp.com

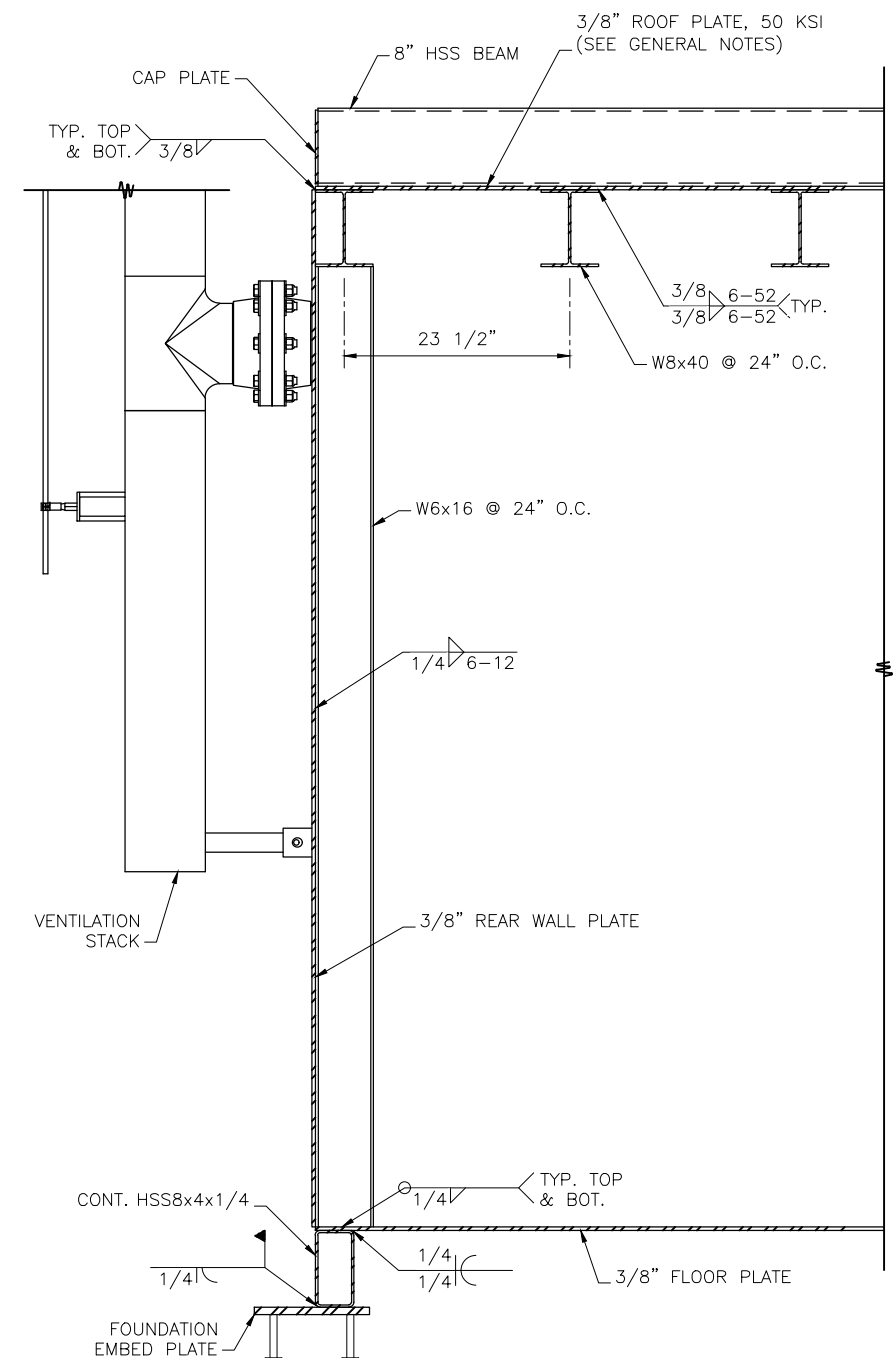
DESCRIPTION
40' X 13'-6" X 9' 3-BAR EARTHEN COVERED TYPE 2
MAGAZINE
FABRICATION DETAILS

MATERIAL

DRAWN BY PDM	REVISION 16
DATE DRAWN 12/17/2024	APPROX. SHIPPING WT. IN LBS -
APPROVED BY -	DRAWING NO. S1413
SHEET SIZE B	
SCALE 1:30	
SHEET S2.5	



1 SIDE WALL SECTION
S3.1 SCALE=1:20



2 REAR WALL SECTION
S3.1 SCALE=1:20

NOTES:

UNLESS OTHERWISE NOTED, TOLERANCES ARE:
FRACTIONS: $\pm 1/16$ ANGLES: $\pm 1^\circ$
MACHINED SURFACES: 125 MICRO-INCHES
THESE TOLERANCES DO NOT APPLY TO BASIC DIMS.
DRAWN TO SCALE UNLESS OTHERWISE NOTED

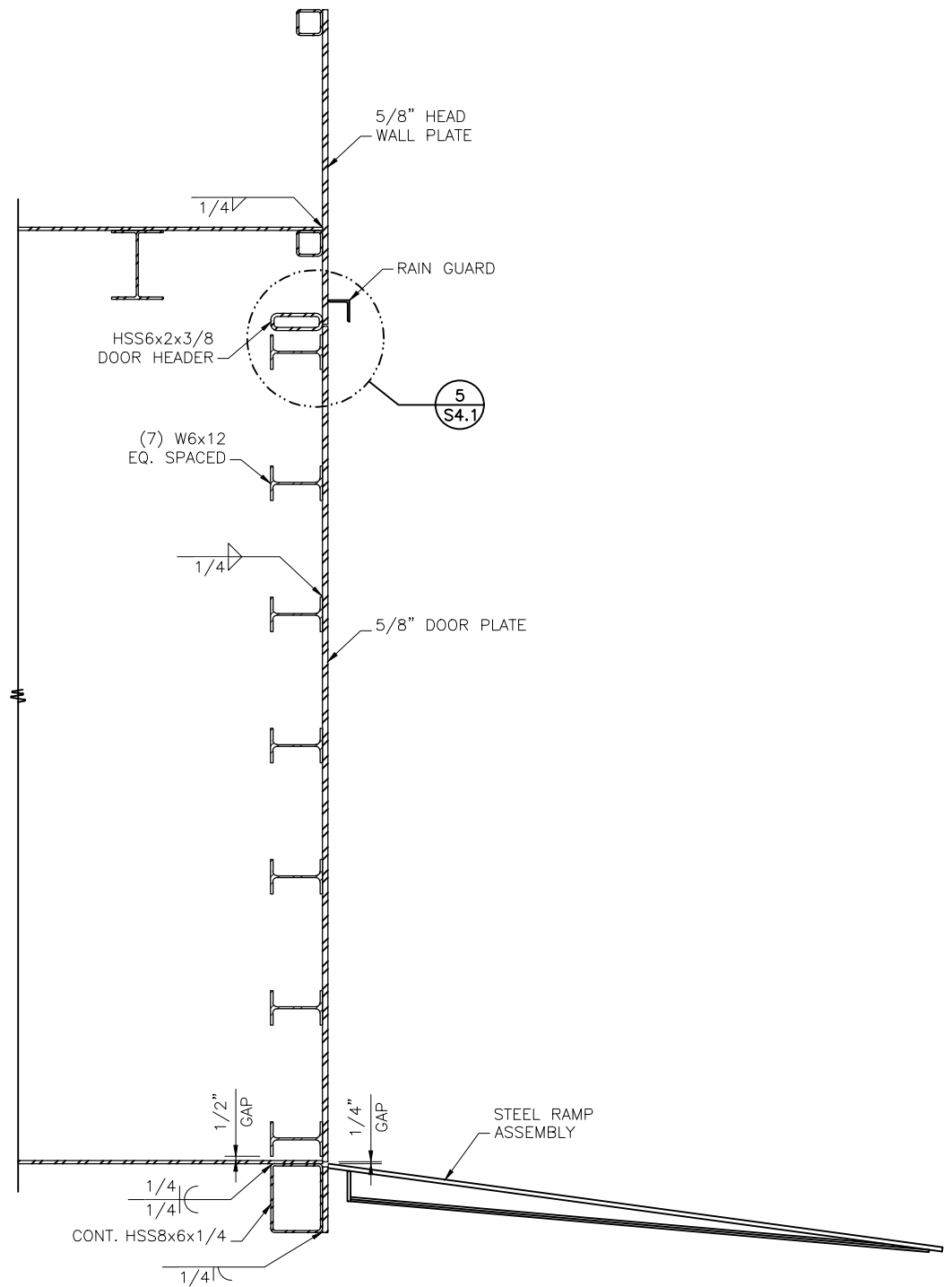
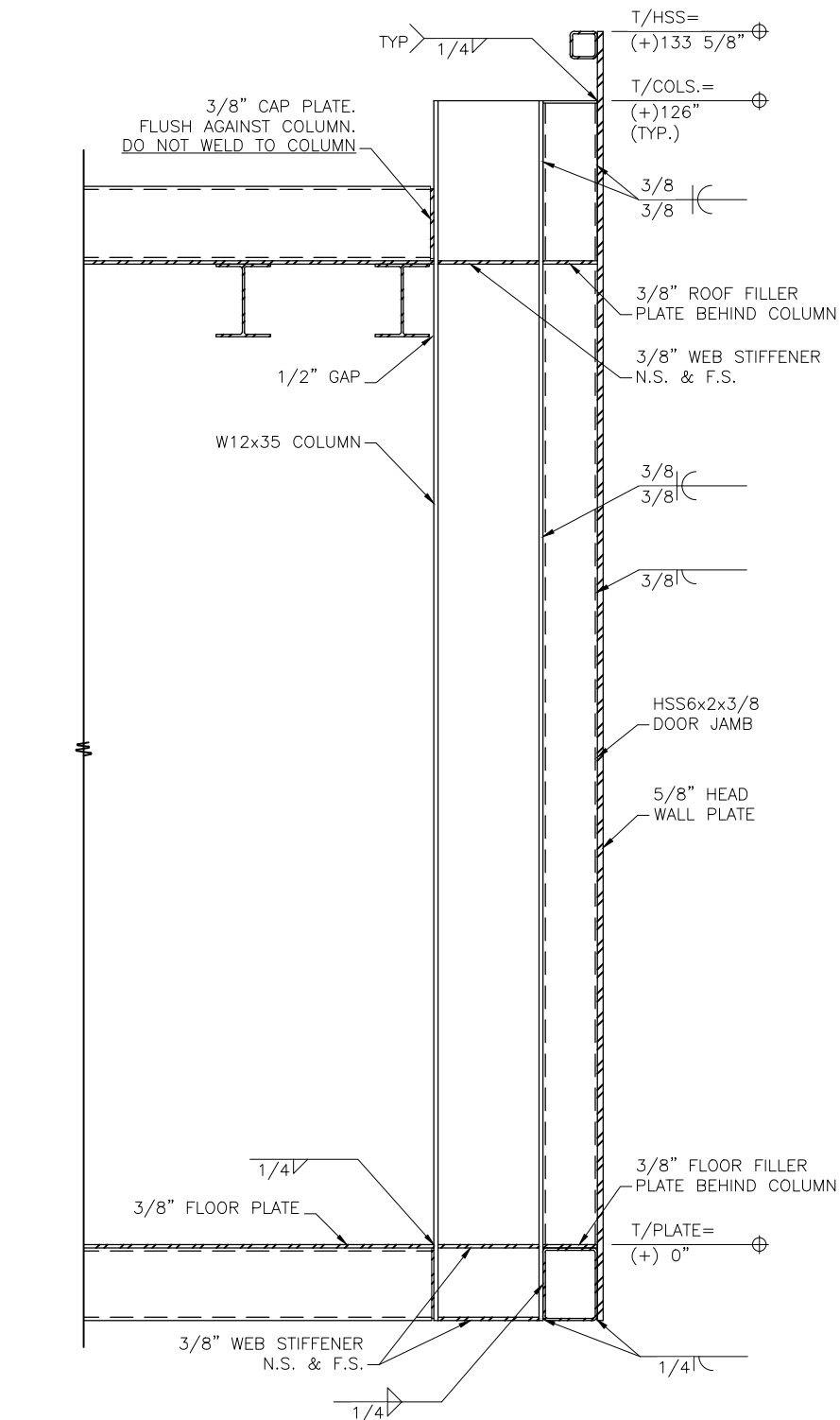
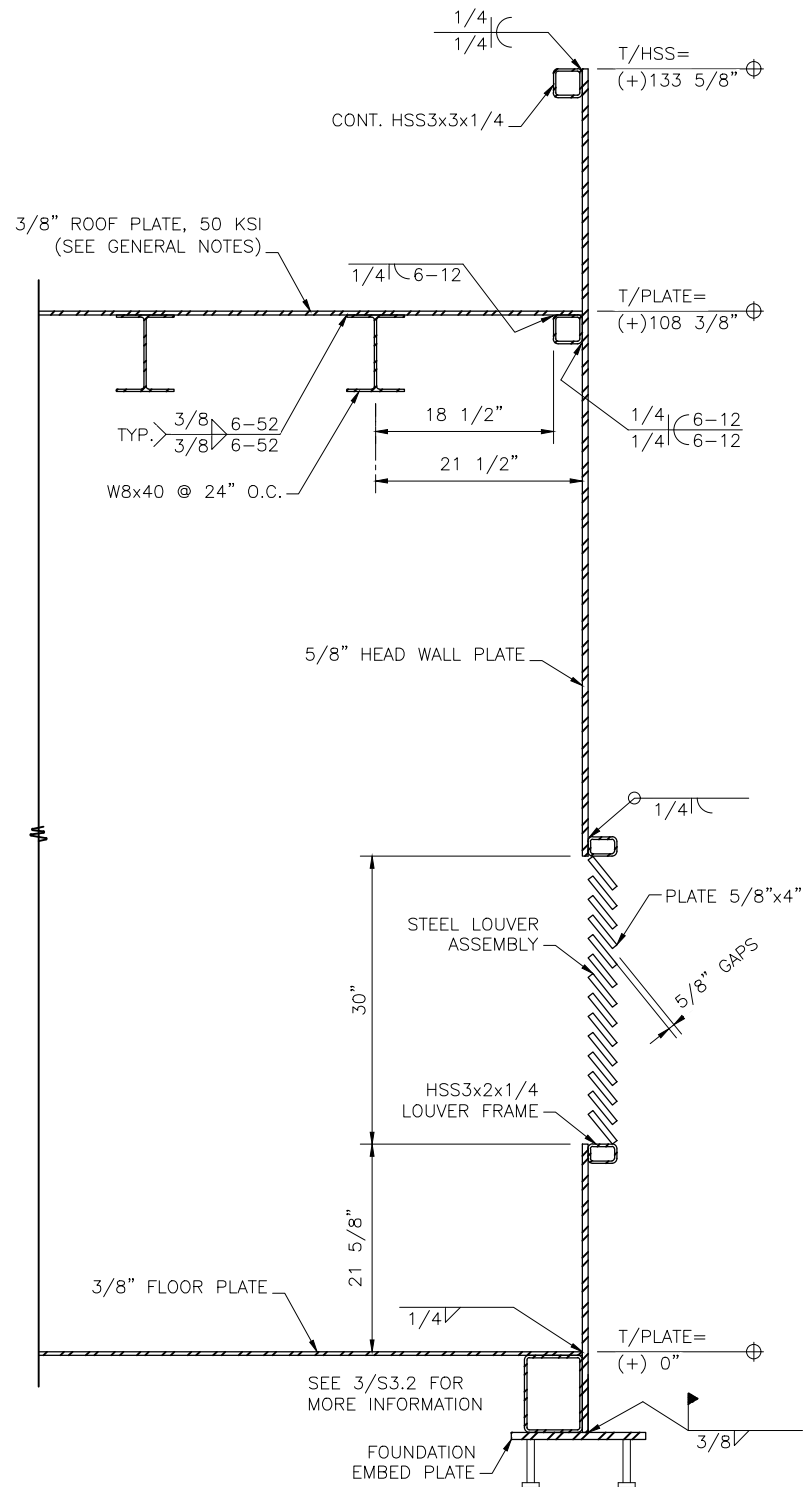
THIS DRAWING IS THE PROPERTY OF ARMAG CORPORATION WHO CLAIMS PROPRIETARY RIGHTS IN THE MATERIAL DISCLOSED. IT IS ISSUED IN CONFIDENCE FOR ENGINEERING INFORMATION ONLY AND MAY NOT BE COPIED OR USED FOR MANUFACTURE OF ANYTHING SHOWN WITHOUT SPECIFIC PERMISSION FROM ARMAG CORPORATION.

ARMAG[®]
CORPORATION
Manufacturers of Arms Vaults and Explosive Storage magazines since 1969
300 ARMAG AVE. • BARDSTOWN, KY 40004 • PHONE: (800) 443-9994 • FAX: (502) 348-4801 • EMAIL: info@armagcorp.com

DESCRIPTION
40' X 13'-6" X 9' 3-BAR EARTHEN COVERED TYPE 2
MAGAZINE
FABRICATION DETAILS

MATERIAL

DRAWN BY PDM	REVISION 16
DATE DRAWN 12/17/2024	APPROX. SHIPPING WT. IN LBS -
APPROVED BY -	DRAWING NO. S1413
SHEET SIZE B	
SCALE 1:20	
SHEET S3.1	



1 FRONT WALL SECTION
S3.2 SCALE=1:20

2 FRONT WALL SECTION @ COLUMN
S3.2 SCALE=1:20

3 FRONT WALL SECTION @ DOOR
S3.2 SCALE=1:20

NOTES:

UNLESS OTHERWISE NOTED, TOLERANCES ARE:
FRACTIONS: $\pm 1/16$ ANGLES: $\pm 1^\circ$
MACHINED SURFACES: 125 MICRO-INCHES
THESE TOLERANCES DO NOT APPLY TO BASIC DIMS.
DRAWN TO SCALE UNLESS OTHERWISE NOTED

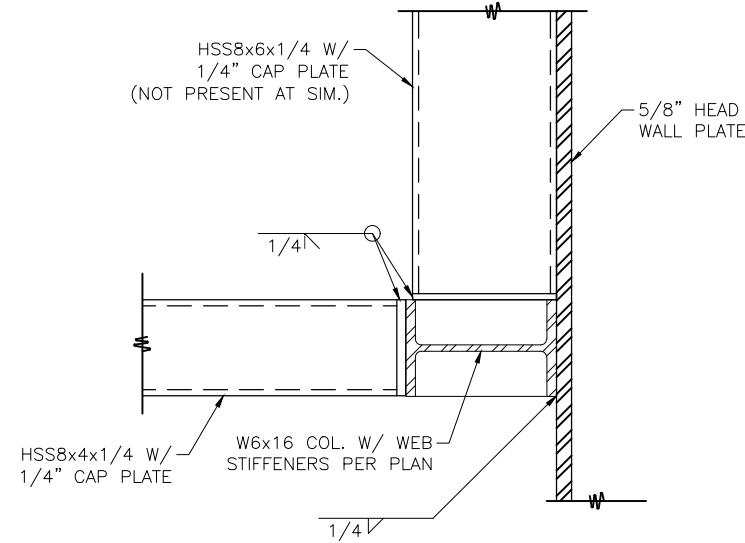
THIS DRAWING IS THE PROPERTY OF ARMAG CORPORATION WHO CLAIMS PROPRIETARY RIGHTS IN THE MATERIAL DISCLOSED. IT IS ISSUED IN CONFIDENCE FOR ENGINEERING INFORMATION ONLY AND MAY NOT BE COPIED OR USED FOR MANUFACTURE OF ANYTHING SHOWN WITHOUT SPECIFIC PERMISSION FROM ARMAG CORPORATION.

ARMAG[®]
CORPORATION
Manufacturers of Arms Vaults and Explosive Storage magazines since 1969
300 ARMAG AVE. • BARDSTOWN, KY 40004 • PHONE: (800) 443-9994 •
FAX: (502) 348-4801 • EMAIL: info@armagcorp.com

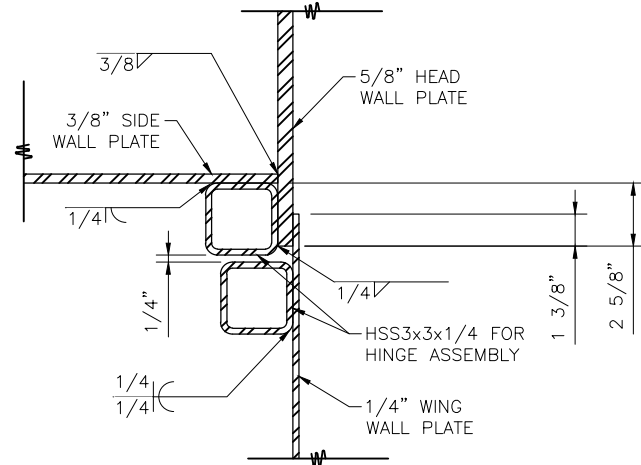
DESCRIPTION
40' X 13'-6" X 9' 3-BAR EARTHEN COVERED TYPE 2
MAGAZINE
FABRICATION DETAILS

MATERIAL

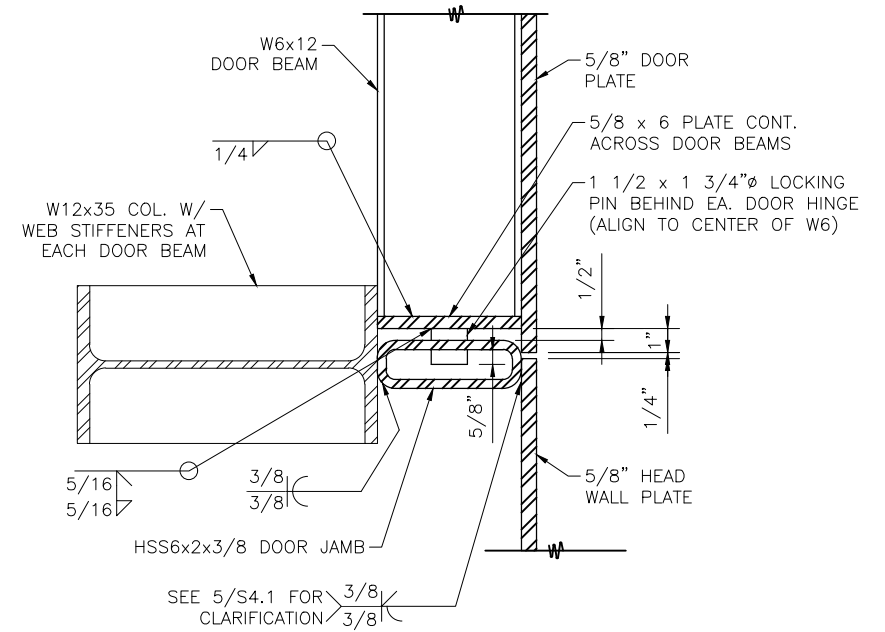
DRAWN BY PDM	REVISION 16
DATE DRAWN 12/17/2024	APPROX. SHIPPING WT. IN LBS -
APPROVED BY -	DRAWING NO. S1413
SHEET SIZE B	
SCALE 1:20	
SHEET S3.2	



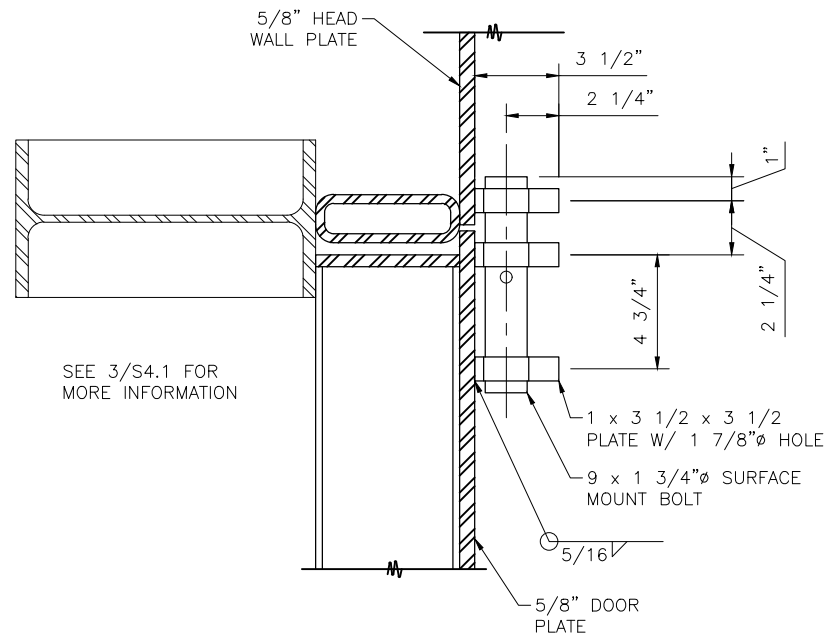
1
S4.1 COLUMN DETAIL
SCALE=1:8



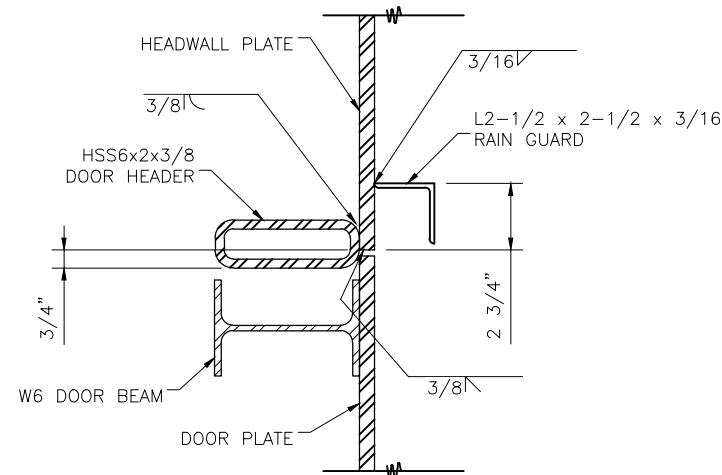
2
S4.1 HINGE DETAIL
SCALE=1:8



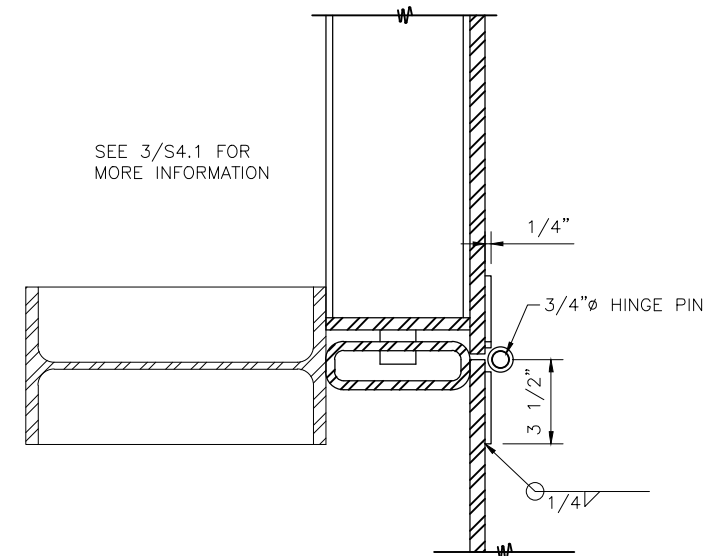
3
S4.1 DOOR DETAIL
SCALE=1:8



4
S4.1 DOOR DETAIL
SCALE=1:8



5
S4.1 RAIN GUARD DETAIL
SCALE=1:8



6
S4.1 DOOR HINGE DETAIL
SCALE=1:8

NOTES:

UNLESS OTHERWISE NOTED, TOLERANCES ARE:
FRACTIONS: $\pm 1/16$ ANGLES: $\pm 1^\circ$
MACHINED SURFACES: 125 MICRO-INCHES
THESE TOLERANCES DO NOT APPLY TO BASIC DIMS.
DRAWN TO SCALE UNLESS OTHERWISE NOTED

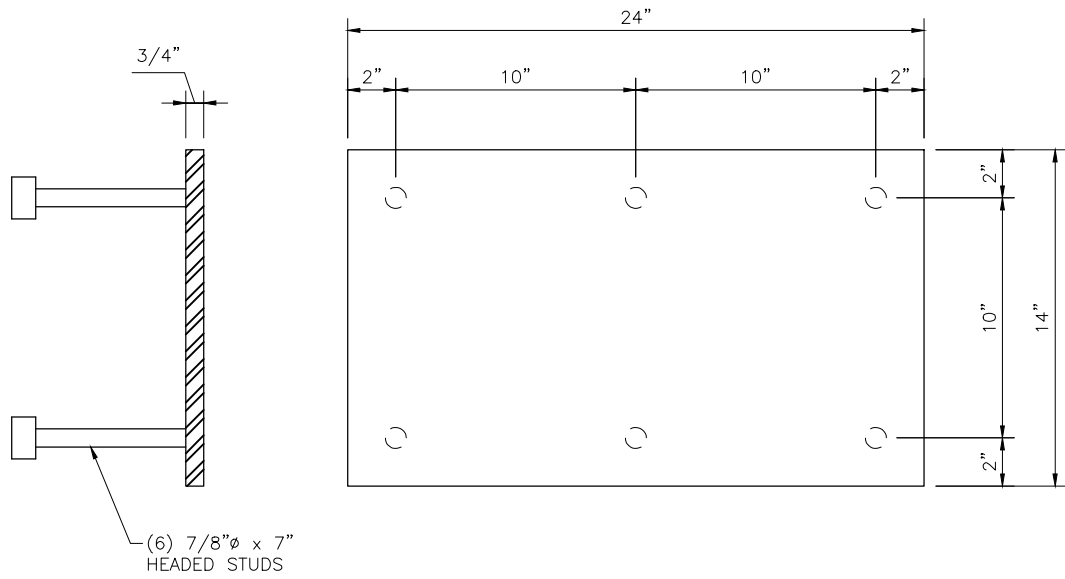
THIS DRAWING IS THE PROPERTY OF ARMAG CORPORATION WHO CLAIMS PROPRIETARY RIGHTS IN THE MATERIAL DISCLOSED. IT IS ISSUED IN CONFIDENCE FOR ENGINEERING INFORMATION ONLY AND MAY NOT BE COPIED OR USED FOR MANUFACTURE OF ANYTHING SHOWN WITHOUT SPECIFIC PERMISSION FROM ARMAG CORPORATION.

ARMAG[®]
CORPORATION
Manufacturers of Arms Vaults and Explosive Storage magazines since 1969
300 ARMAG AVE. • BARDSTOWN, KY 40004 • PHONE: (800) 443-9994 •
FAX: (502) 348-4801 • EMAIL: info@armagcorp.com

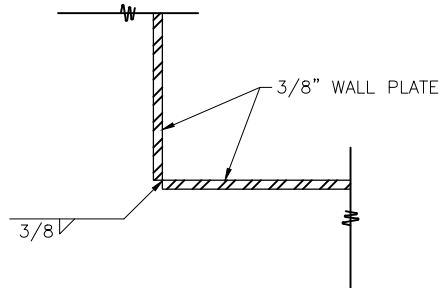
DESCRIPTION
40' X 13'-6" X 9' 3-BAR EARTHEN COVERED TYPE 2
MAGAZINE
FABRICATION DETAILS

MATERIAL

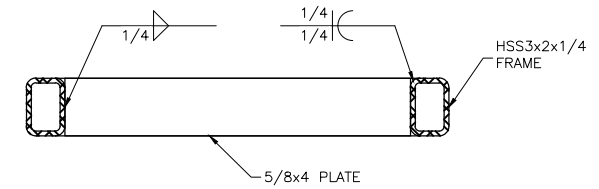
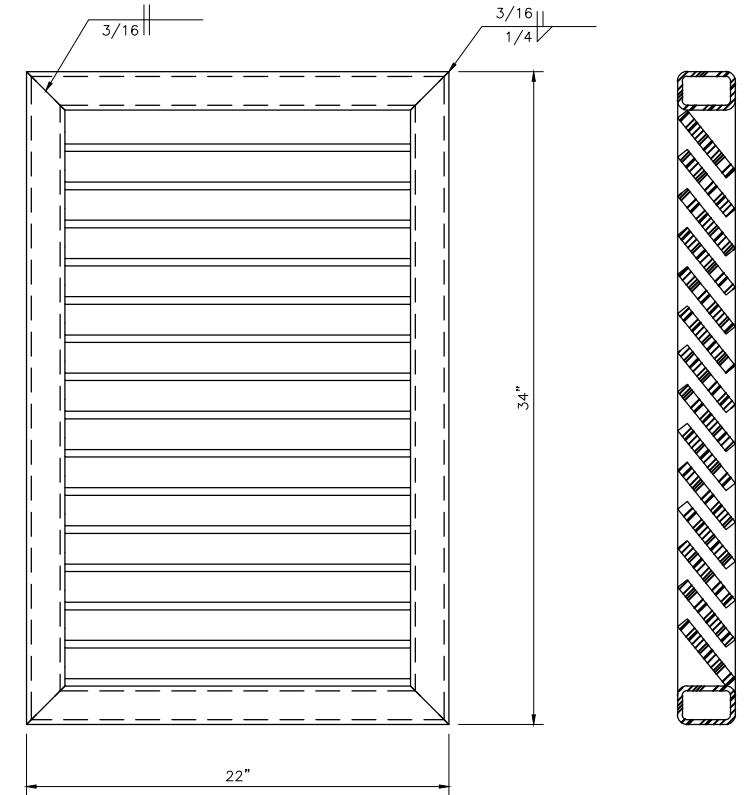
DRAWN BY PDM	REVISION 16
DATE DRAWN 12/17/2024	APPROX. SHIPPING WT. IN LBS -
APPROVED BY -	DRAWING NO. S1413
SHEET SIZE B	
SCALE 1:8	
SHEET S4.1	



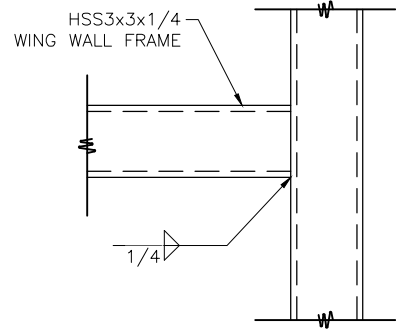
1 EMBED PLATE DETAIL
S4.2 SCALE=1:8



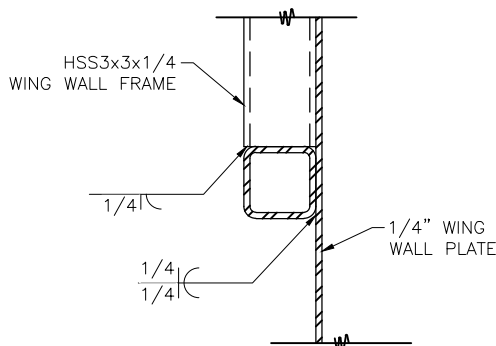
2 TYP OUTSIDE CORNER DETAIL
S4.2 SCALE=1:8



5 LOUVER DETAIL
S4.2 SCALE=1:10



3 TYP HSS CONNECTION
S4.2 SCALE=1:8



4 TYP HSS CONNECTION
S4.2 SCALE=1:8

NOTES:

UNLESS OTHERWISE NOTED, TOLERANCES ARE:
FRACTIONS: $\pm 1/16$ ANGLES: $\pm 1^\circ$
MACHINED SURFACES: 125 MICRO-INCHES
THESE TOLERANCES DO NOT APPLY TO BASIC DIMS.
DRAWN TO SCALE UNLESS OTHERWISE NOTED

THIS DRAWING IS THE PROPERTY OF ARMAG CORPORATION WHO CLAIMS PROPRIETARY RIGHTS IN THE MATERIAL DISCLOSED. IT IS ISSUED IN CONFIDENCE FOR ENGINEERING INFORMATION ONLY AND MAY NOT BE COPIED OR USED FOR MANUFACTURE OF ANYTHING SHOWN WITHOUT SPECIFIC PERMISSION FROM ARMAG CORPORATION.

ARMAG[®]
CORPORATION
Manufacturers of Arms Vaults and Explosive Storage magazines since 1969
300 ARMAG AVE. • BARDSTOWN, KY 40004 • PHONE: (800) 443-9994 •
FAX: (502) 348-4801 • EMAIL: info@armagcorp.com

DESCRIPTION
40' X 13'-6" X 9' 3-BAR EARTHEN COVERED TYPE 2
MAGAZINE
FABRICATION DETAILS

MATERIAL

DRAWN BY
PDM
DATE DRAWN
12/17/2024
APPROVED BY
-
SHEET SIZE
B
SCALE
1:8
SHEET
S4.2

REVISION
16
APPROX. SHIPPING WT. IN LBS
-
DRAWING NO.
S1413

GENERAL

- A. THE FOLLOWING NOTES APPLY TO ALL PARTS OF THIS DRAWING SET.
- B. ALL DESIGN AND CONSTRUCTION IS BASED ON AND IN ACCORDANCE WITH THE REPORT BY THE SCHREIFER GROUP "DESIGN METHODOLOGY FOR THE ARMAG EARTH-COVERED MAGAZINE" DOCUMENT NO. TSG2024-012, DATED 29 AUGUST 2024 (REFERRED TO AS "THE REPORT").
- C. NO PROVISIONS HAVE BEEN MADE IN THE DESIGN FOR THE SUPPORT OF ANY CONCENTRATED OR DISTRIBUTED LOADS NOT OUTLINED IN "THE REPORT".
- D. THE FABRICATOR SHALL BE RESPONSIBLE FOR MEANS, METHODS, TECHNIQUES, SEQUENCES, AND PROCEDURES IN ORDER TO COMPLY WITH THE DRAWINGS.

WELDING

- A. ALL WELDING SHALL CONFORM TO AMERICAN WELDING SOCIETY STANDARD D1.1 AND STANDARD D1.3, LATEST EDITIONS.
- B. ELECTRODES TO BE E70XX OR ER70SX COMPLYING WITH AWS.
- C. THE WELDER SHALL BE FULLY CERTIFIED TO THE REQUIREMENTS OF AWS QC3.
- D. ANY CONNECTION NOT INDICATED ON THE DRAWING SHALL BE WELDED AND DESIGNED BY THE FABRICATOR.

STRUCTURAL STEEL

- A. CONFORM TO AISC MANUAL OF STEEL CONSTRUCTION, LATEST EDITION
- B. MATERIALS:
ASTM A992, FY=50 KSI FOR I-SHAPES
ASTM A36, FY=36 KSI FOR PLATES, BARS, AND ANGLES
ASTM A572, GRADE 50, FY=50 KSI FOR ROOF PLATE
ASTM A500, GRADE B, FY=46 KSI FOR STRUCTURAL TUBING

SHALLOW FOUNDATION

- A. DUE TO WIDELY VARYING AND UNKNOWN SITE CONDITIONS, NO FOUNDATION ELEMENTS HAVE BEEN DESIGNED.
- B. THE SITE SHALL BE PREPARED IN ACCORDANCE WITH INSTRUCTIONS OF A QUALIFIED ENGINEER.
- C. THE FOUNDATION SHALL BE DESIGNED TO SUPPORT THE LOADS OUTLINED IN "THE REPORT" BY A QUALIFIED ENGINEER IN ACCORDANCE WITH, AS A MINIMUM, THE REQUIREMENTS OF ACI 318 AND ACI 301, LATEST EDITIONS.

NOTES:	UNLESS OTHERWISE NOTED, TOLERANCES ARE: FRACTIONS: ±1/16 ANGLES: ±1° MACHINED SURFACES: 125 MICRO-INCHES THESE TOLERANCES DO NOT APPLY TO BASIC DIMS. DRAWN TO SCALE UNLESS OTHERWISE NOTED	<div>ARMAG®</div> <div>C O R P O R A T I O N</div> <div>Manufacturers of Arms Vaults and Explosive Storage magazines since 1969</div> <div>300 ARMAG AVE. • BARDSTOWN, KY 40004 • PHONE: (800) 443-9994 • FAX: (502) 348-4801 • EMAIL: info@armagcorp.com</div>	DESCRIPTION	DRAWN BY	REVISION
			40' X 13'-6" X 9' 3-BAR EARTHEN COVERED TYPE 2 MAGAZINE FABRICATION DETAILS	PDM	16
				DATE DRAWN	
				12/17/2024	
				APPROVED BY	APPROX. SHIPPING WT. IN LBS
				-	-
			SHEET SIZE		
			B		
			SCALE		DRAWING NO.
			1:1		S1413
			SHEET		
			S5.1		
			MATERIAL		
			-		