

**EXAMPLE**

# Vandenberg AFB

**WALSH** CANNONDESIGN



# Vandenberg AFB

## CHARRETTE Meeting

- 1 Introductions
- 2 Charrette Activities
- 3 Project Scope Overview
- 4 Concept Plans
- 5 Transition Space

# Charrette Schedule

## Vandenberg - Charrette Schedule (24-29 Jan)

|       | 24-Jan-21                     | 25-Jan-21  | 26-Jan-21                                   | 27-Jan-21                        | 28-Jan-21                         | 29-Jan-21 | 30-Jan-21 |
|-------|-------------------------------|--|---|----------------------------------|-----------------------------------|-----------|-----------|
|       | Sunday                        | Monday   | Tuesday                                     | Wednesday                        | Thursday                          | Friday    | Saturday  |
|       |                               | Room 1   | Room 1                                      | Room 1                           | Room 1                            |           |           |
| 7:00  | Travel                        | Base Access  |   |                                  |                                   |           |           |
|       |                               |  | Daily Kickoff                               | Daily Kickoff                    | Daily Kickoff                     |           |           |
| 8:00  |                               |  |   | Morning Huddle<br>COVID Briefing | Morning Huddle<br>COVID Briefing  |           |           |
|       |                               |  |   |                                  |                                   |           |           |
| 9:00  |                               | Daily Kickoff  | Radiology/ TPF                              | Morning Huddle<br>COVID Briefing | Morning Huddle<br>COVID Briefing  |           |           |
|       |                               |  |   |                                  |                                   |           |           |
| 10:00 |                               | Kick-Off/ In-Brief   | Public Health/ TPF                          | Lab Mtg #2<br>(PRCL, Transition) | Follow-Up Meetings<br>as Required |           |           |
|       |                               |  |   |                                  |                                   |           |           |
| 11:00 |                               | Pediatrics/ Med<br>Mgmt/ TPF                                       | BEE/ Temp                                   |                                  |                                   |           |           |
|       |                               |  |   |                                  |                                   |           |           |
| 12:00 |                               | Lunch  | Lunch                                       | Lunch                            | Travel                            |           |           |
|       |                               |  |   |                                  |                                   |           |           |
| 13:00 |                               | Lab Mtg #1<br>(Overview, Layout,<br>Arch Significant<br>Equipment) | Systems/Temp #1                             | AOM                              |                                   |           |           |
|       |                               |  |   |                                  |                                   |           |           |
| 14:00 |                               |  | AHJ Meeting                                 |                                  |                                   |           |           |
|       |                               |  |   |                                  |                                   |           |           |
| 15:00 |                               |  |   |                                  |                                   |           |           |
|       |                               |  |   |                                  |                                   |           |           |
| 16:00 | Command/ RMO/<br>CSS/ Records | Security/<br>Transition/ COM/<br>LVS                               | Out-Brief (Schedule,<br>Phasing, Logistics) |                                  |                                   |           |           |
|       |                               |  |   |                                  |                                   |           |           |
| 17:00 | Daily Wrapup                  | Daily Wrapup   | Daily Wrapup                                |                                  |                                   |           |           |
|       |                               |  |   |                                  |                                   |           |           |
| 18:00 |                               |  |   |                                  |                                   |           |           |
|       |                               |  |   |                                  |                                   |           |           |

# PROJECT OVERVIEW



# Project Information

Location: Vandenberg AFB, California

Project Area: 22,332 dgsf (PFD)

~30,000 sf Demo to Structure

## Departments:

- Radiology
- Clinical Lab
- Medical Management
- Pediatric Clinic
- Housekeeping
- Public Health
- Aerospace & Operational Medicine
- Command Suite
- Bioenvironmental Engineering
- Records
- Systems

Temporary Phasing Facility (TPF)



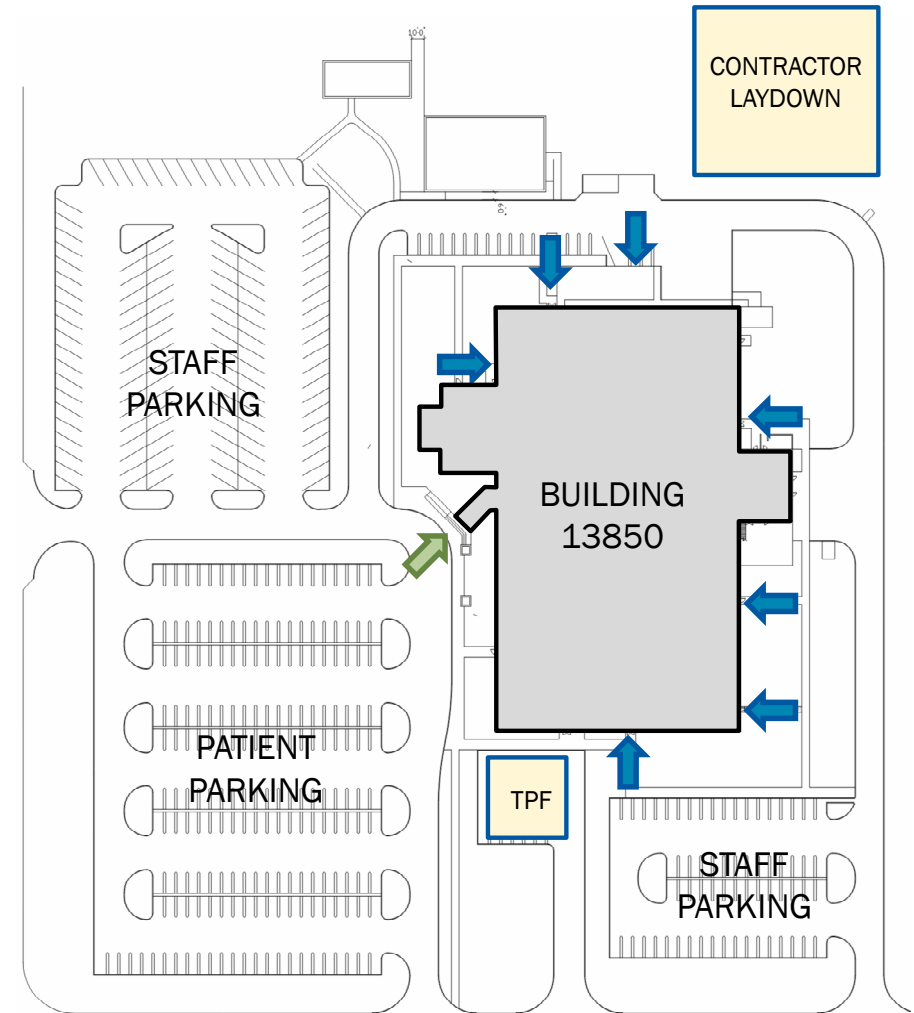
# Project Goals

- Transform the former inpatient facility into a purpose-built outpatient clinic
- Consolidate patient care to the first floor
- Realign and/or right size departments
- Repair infrastructure
- Decommission portion of 2<sup>nd</sup> floor and all of 3<sup>rd</sup> and 4<sup>th</sup> floors.



# SITE PLAN - PROPOSED

- Minor impact to parking and building entrances during construction.
- Temporary Phasing Facility to house some departments during construction





# Levels of Alteration – 13850 Level 1



## Legend

- Level 3 Alteration
- Level 1 Alteration
- See SOW Mechanical section

NOTE: Refer to SOW for related building system, infrastructure, and LVS scope that could be additive or subtractive from standard Level of Renovation definition. Also, building system, infrastructure, and LVS scope are not limited by the LOR boundaries shown here.

1

Bldg. 13850 Floor 1 Main Clinic - Levels of Alteration (BFB)

Not to Scale

# Levels of Alteration – 13850 Level 2



## Legend

- Level 3 Alteration
- Level 1 Alteration
- Demo to Structure

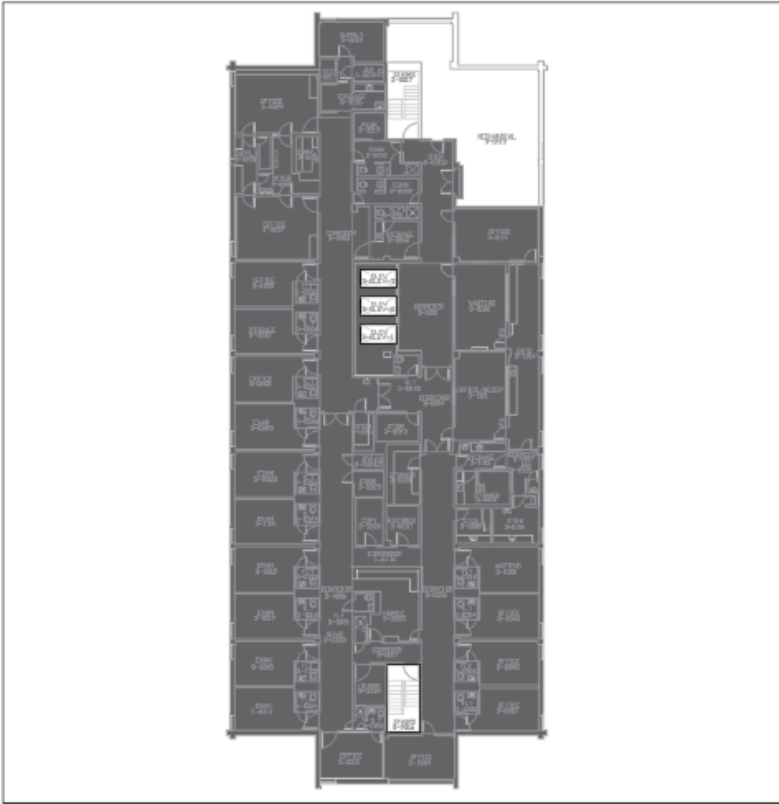
NOTE: Refer to SOW for related building system, infrastructure, and LVS scope that could be additive or subtractive from standard Level of Renovation definition. Also, building system, infrastructure, and LVS scope are not limited by the LOR boundaries shown here.

1

Bldg. 13850 Floor 2 Main Clinic - Levels of Alteration (BFB)

Not to Scale

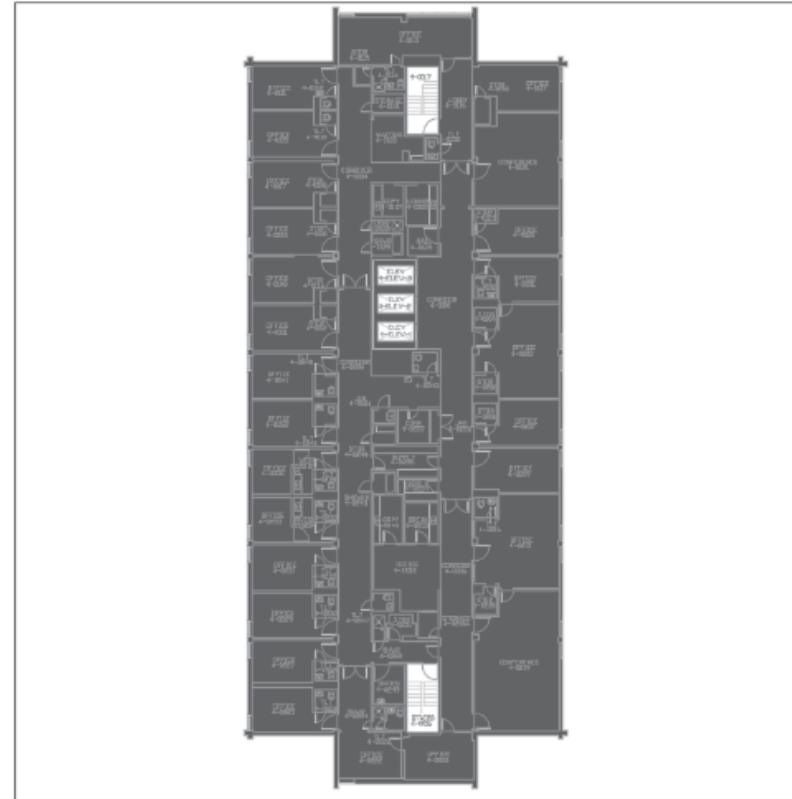
# Levels of Alteration – 13850 Level 3 & 4



1

Bldg. 13850 Floor 3 Main Clinic - Levels of Alteration (BFB)

Not to Scale



1

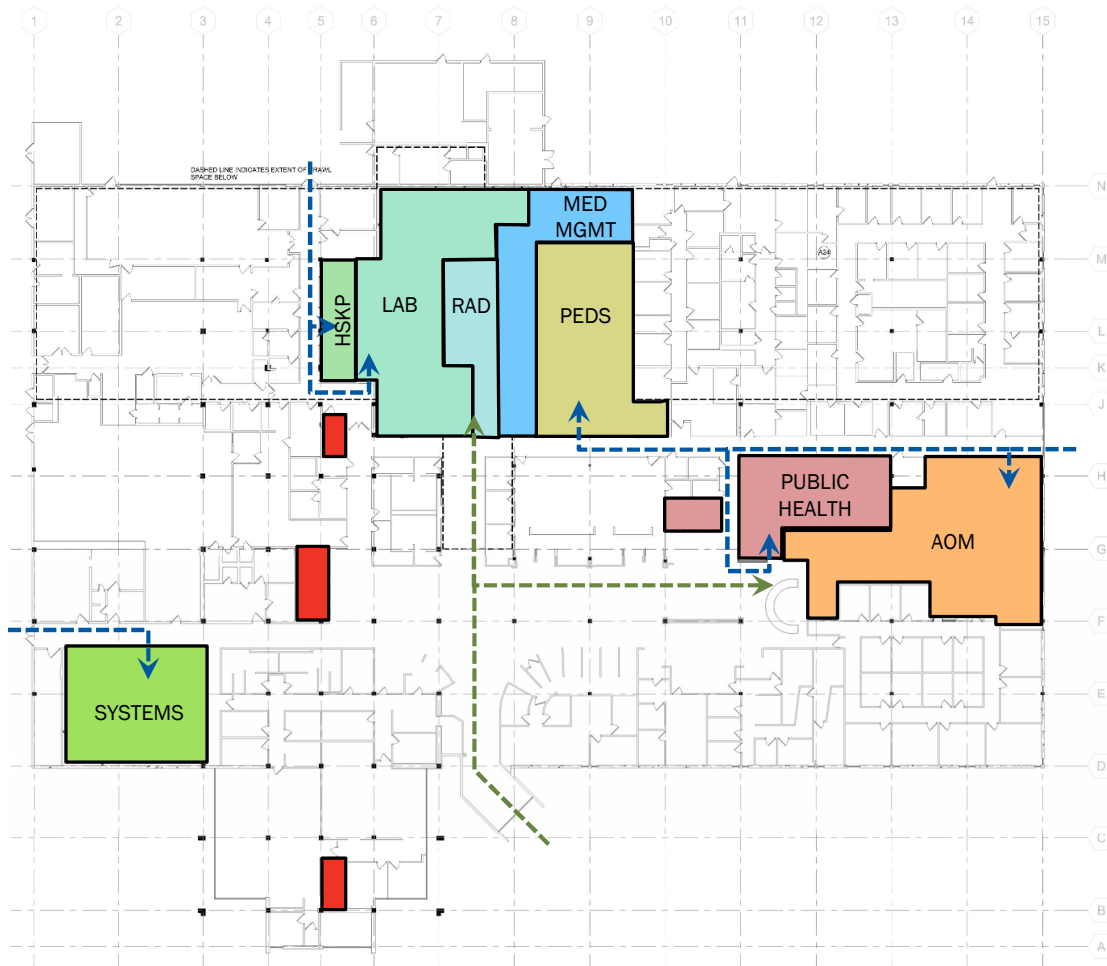
Bldg. 13850 Floor 4 Main Clinic - Levels of Alteration (BFB)

Not to Scale





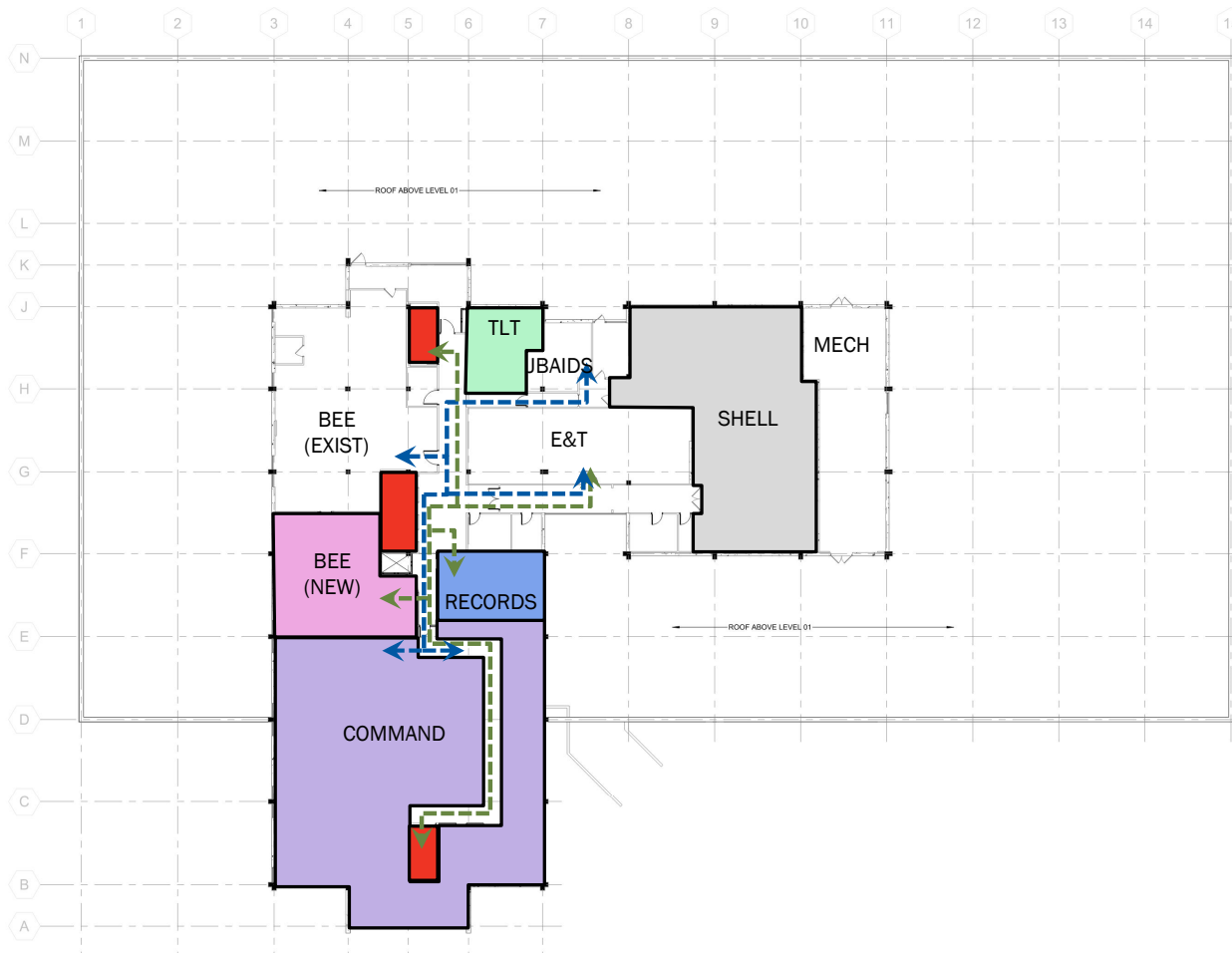
# Level 1 - Overall Department Plan



## Department Legend

- 01 - RADIOLOGY
- 02 - CLINICAL LABORATORY
- 03 - MEDICAL MANAGMENT
- 04 - PEDIATRIC CLINIC
- 05 - HOUSEKEEPING
- 06 - PUBLIC HEALTH
- 07 - AEROSPACE AND OPERATIONAL MEDICINE
- 11 - SYSTEMS
- > PUBLIC CIRCULATION
- > STAFF/LOGISTICS CIRCULATION

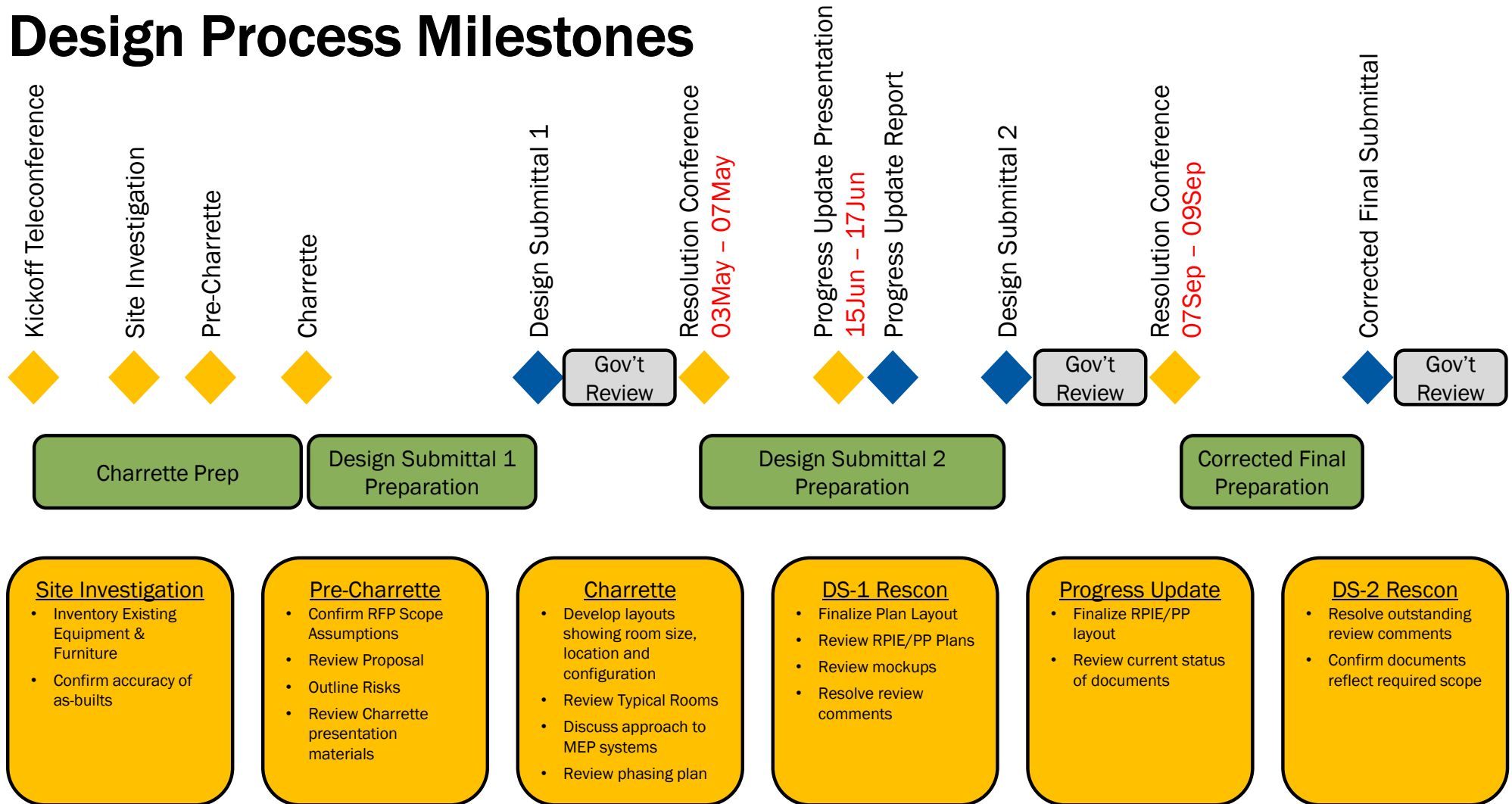
# Level 2 – Overall Department Plan



## Department Legend

- 08 - COMMAND SUITE
- 09 - BIOENVIRONMENTAL ENGINEERING
- 10 - RECORDS
- 12 - COMMON AREAS
- ➔ PUBLIC CIRCULATION
- ➔ STAFF/LOGISTICS CIRCULATION

# Design Process Milestones



# Phasing Plan – 13850 Level 1

**Transition** – Rad, PH & Med Mgmt to TPF

**Phase 1A** – Housekeeping

**Phase 1B** – Lab & Auditorium HVAC

**Move** – Lab to final

**Transition** – Systems to Level 2 (future den structure area)

**Phase 2** – Rad, Peds, PH & Med Mgmt

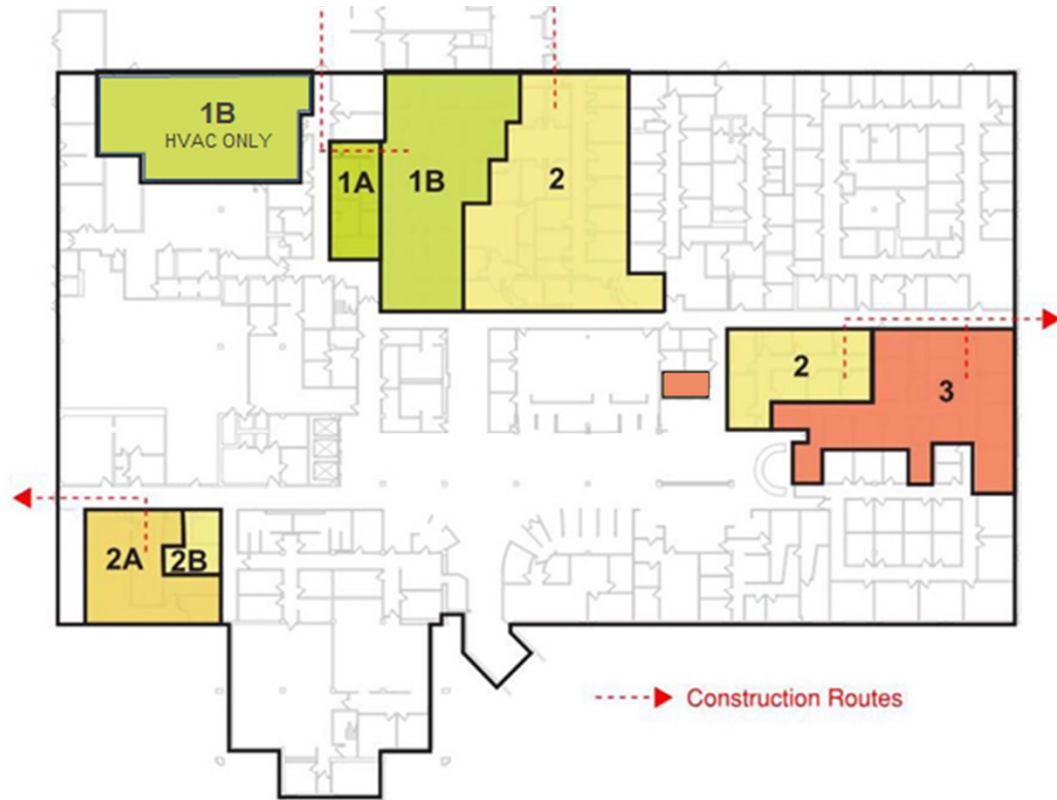
**Phase 2A** – Systems (new server room)

**Phase 2B** – Systems (old server room)

**Move** – Rad, Peds, PH, Med Mgmt & System

**Phase 3** – Aerospace Operational Medicine (AOM)

**Move** – AOM to final



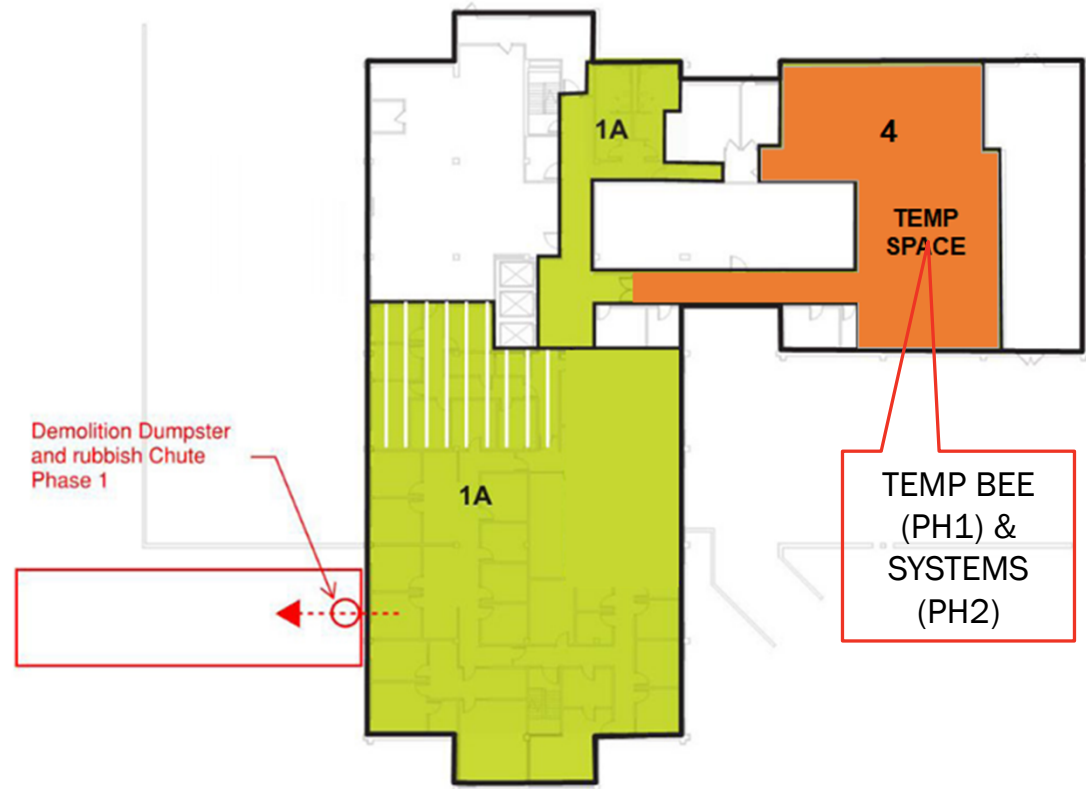
# Phasing Plan– 13850 Level 2

Transition – BEE to Temp Space

Phase 1A – BEE, Command, CSS, RMO, TOPA  
Records & Common Space

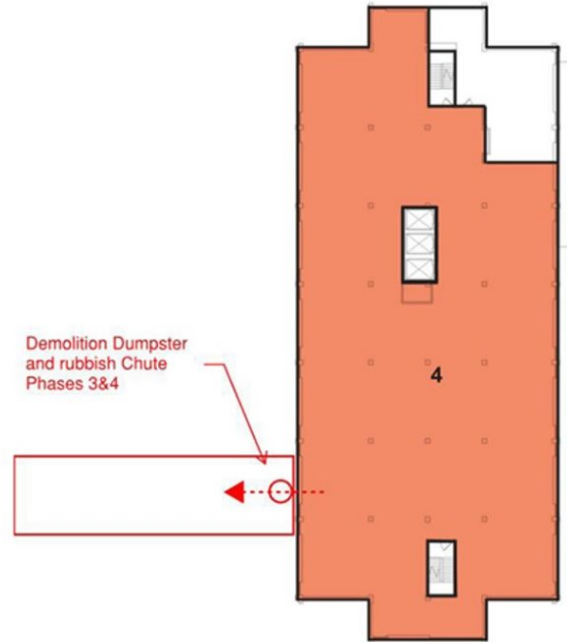
**Move** - BEE, Command, CSS, RMO, TOPA Records &  
Common Space to final

Phase 4 – Demo-to-Structure

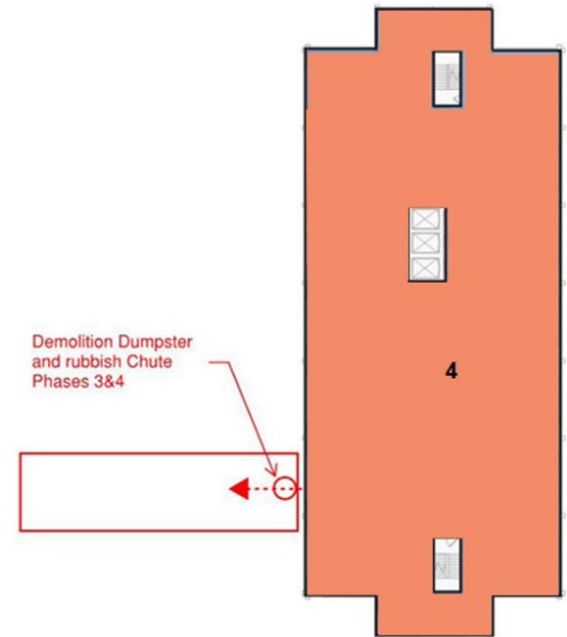


# Phasing Plan– 13850 Level 3-4

Phase 4 – Demo-to-Structure



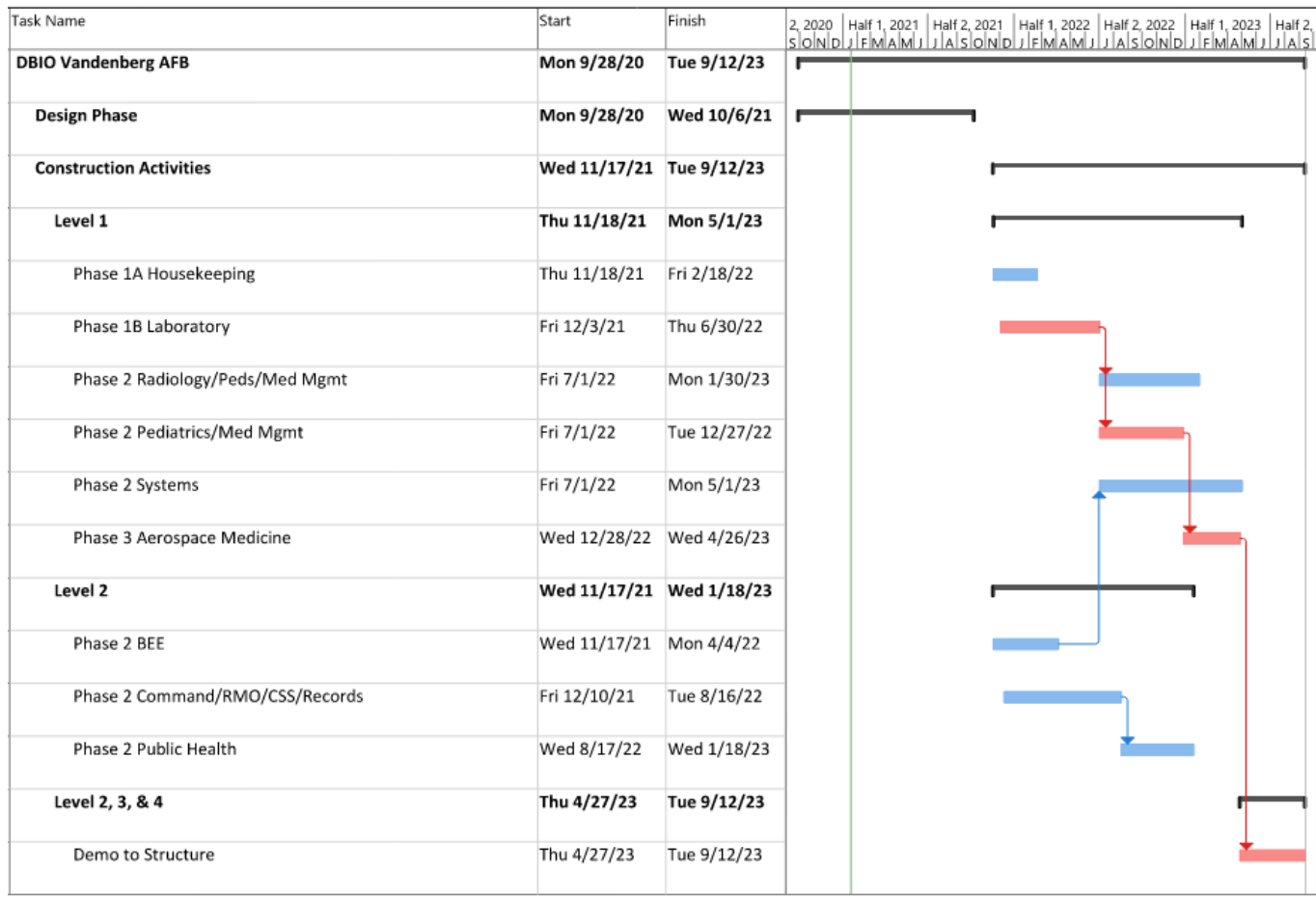
Level 4



Level 3



# Project Schedule

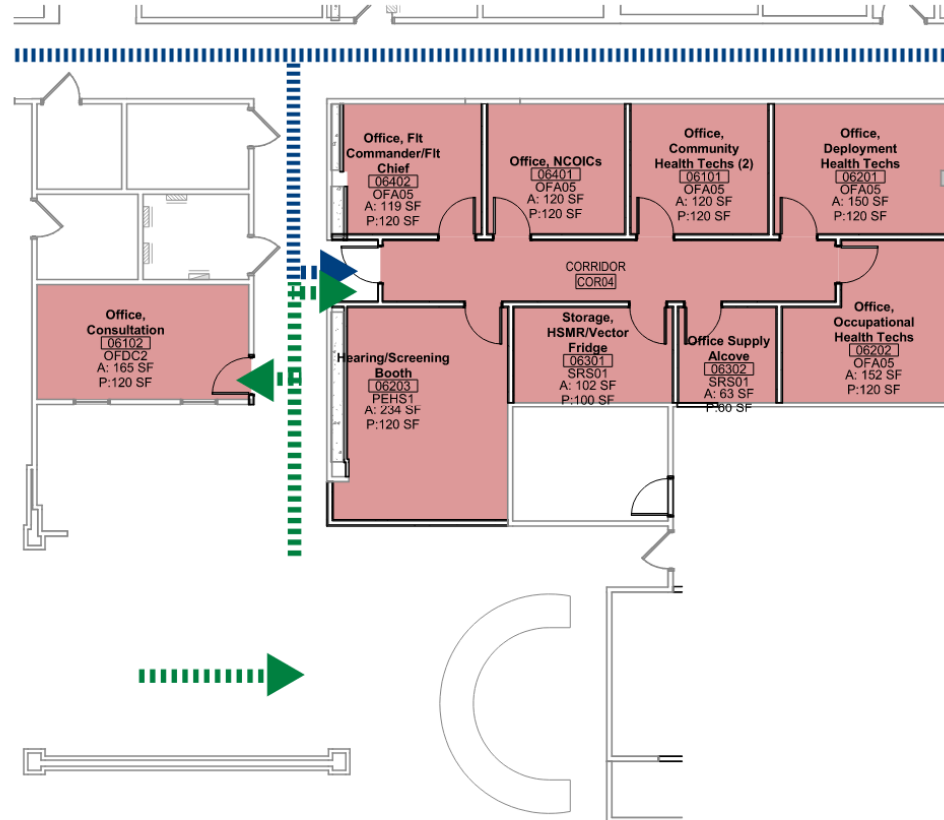
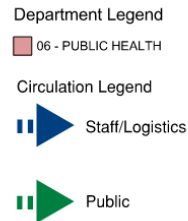


# DEPARTMENT PLANS

# Level 1 – Radiology/Lab/Med Mgmt/Pediatrics/Hskp



# Level 1 – Public Health



# Level 1 – Aerospace & Operational Medicine

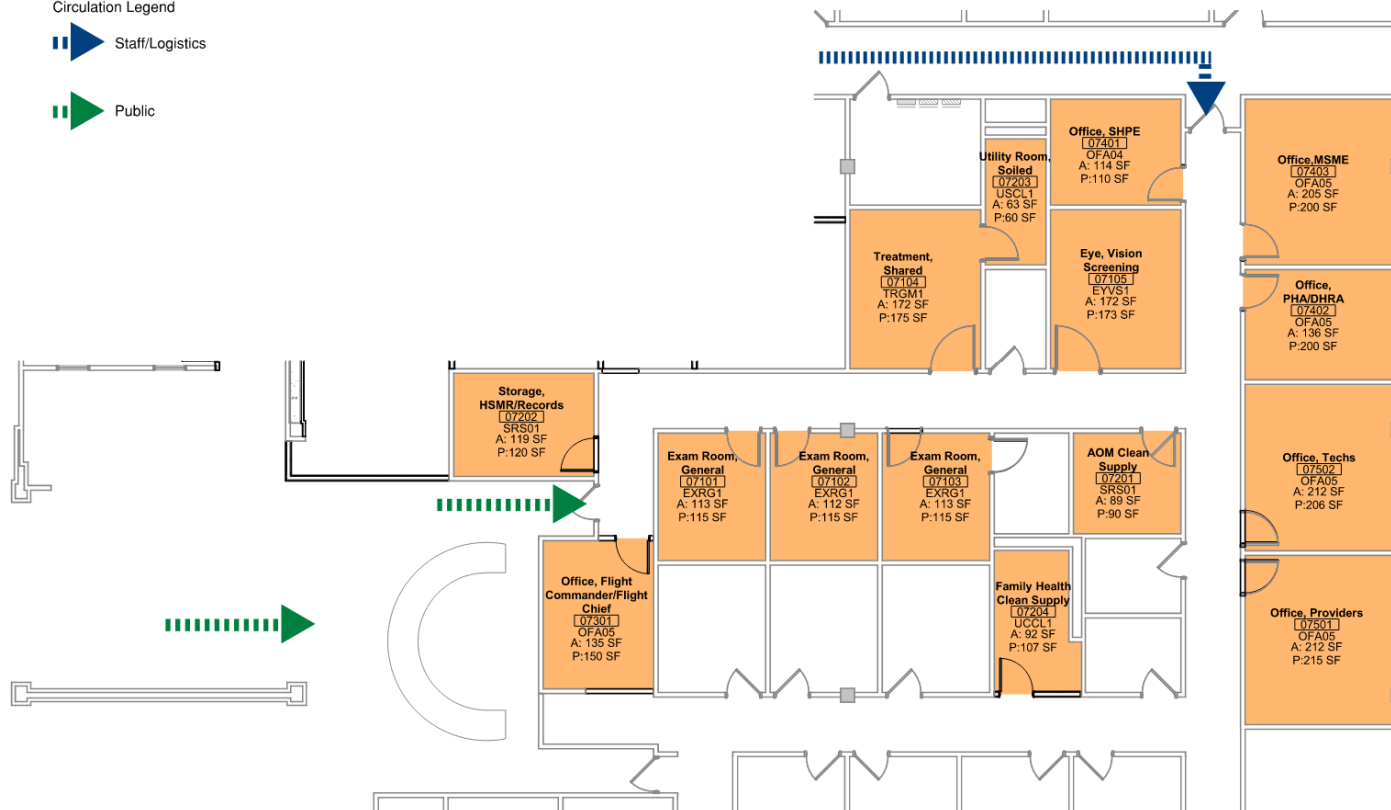
## Department Legend

07 - AEROSPACE AND OPERATIONAL MEDICINE

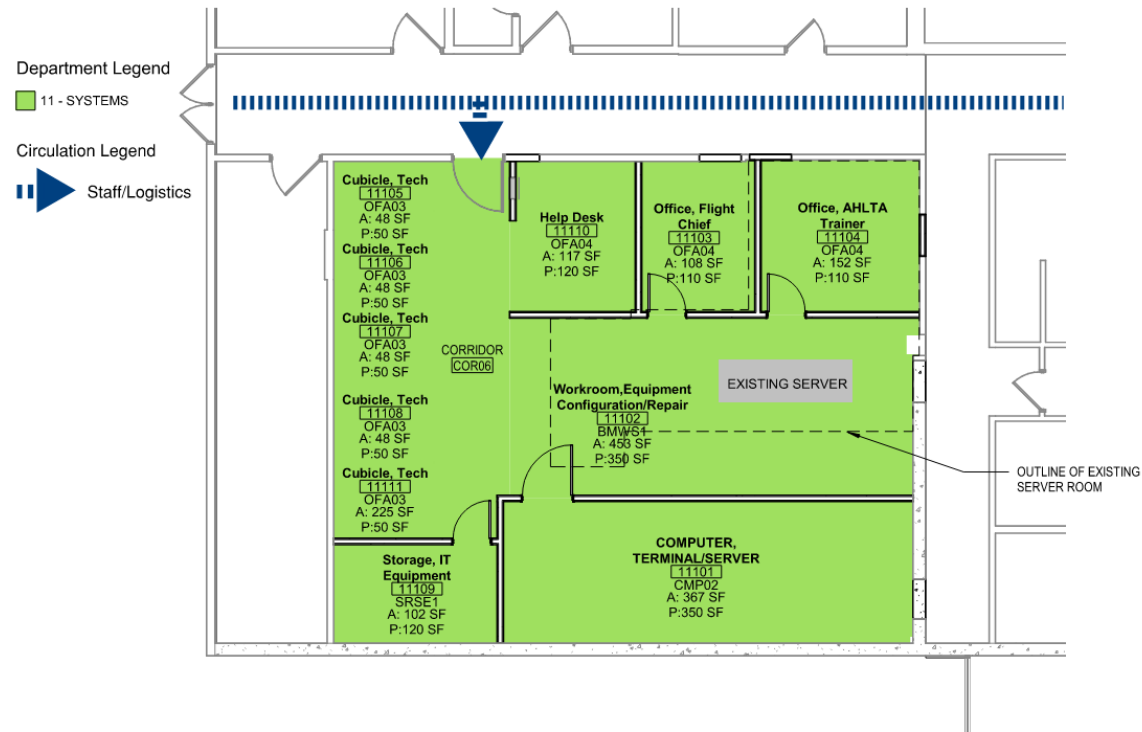
## Circulation Legend

Staff/Logistics

Public

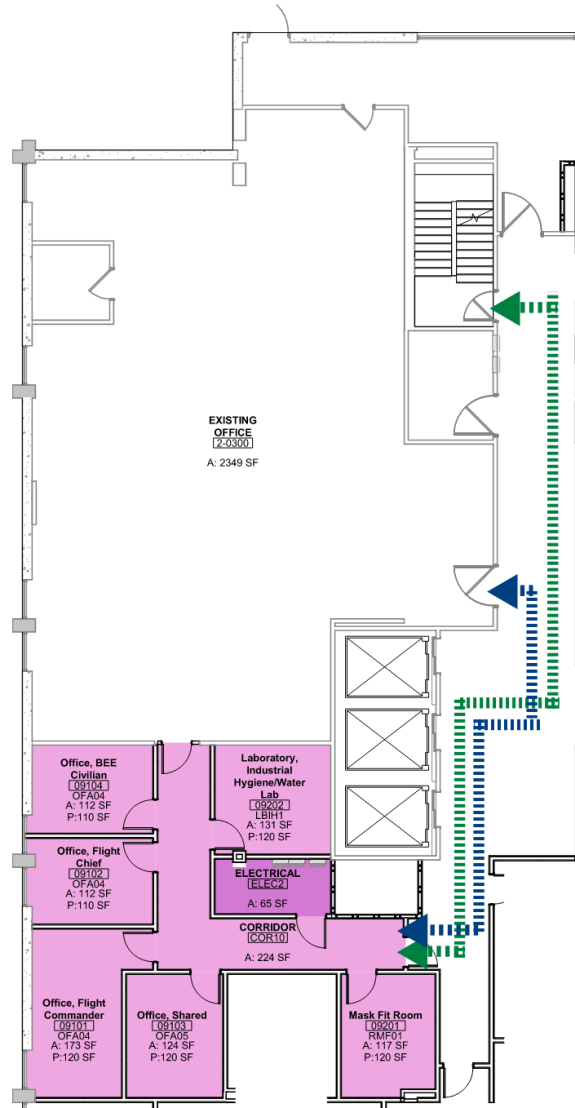
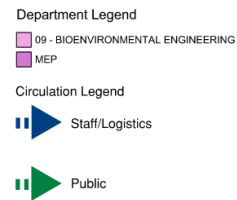


# Level 1 – Aerospace & Operational Medicine

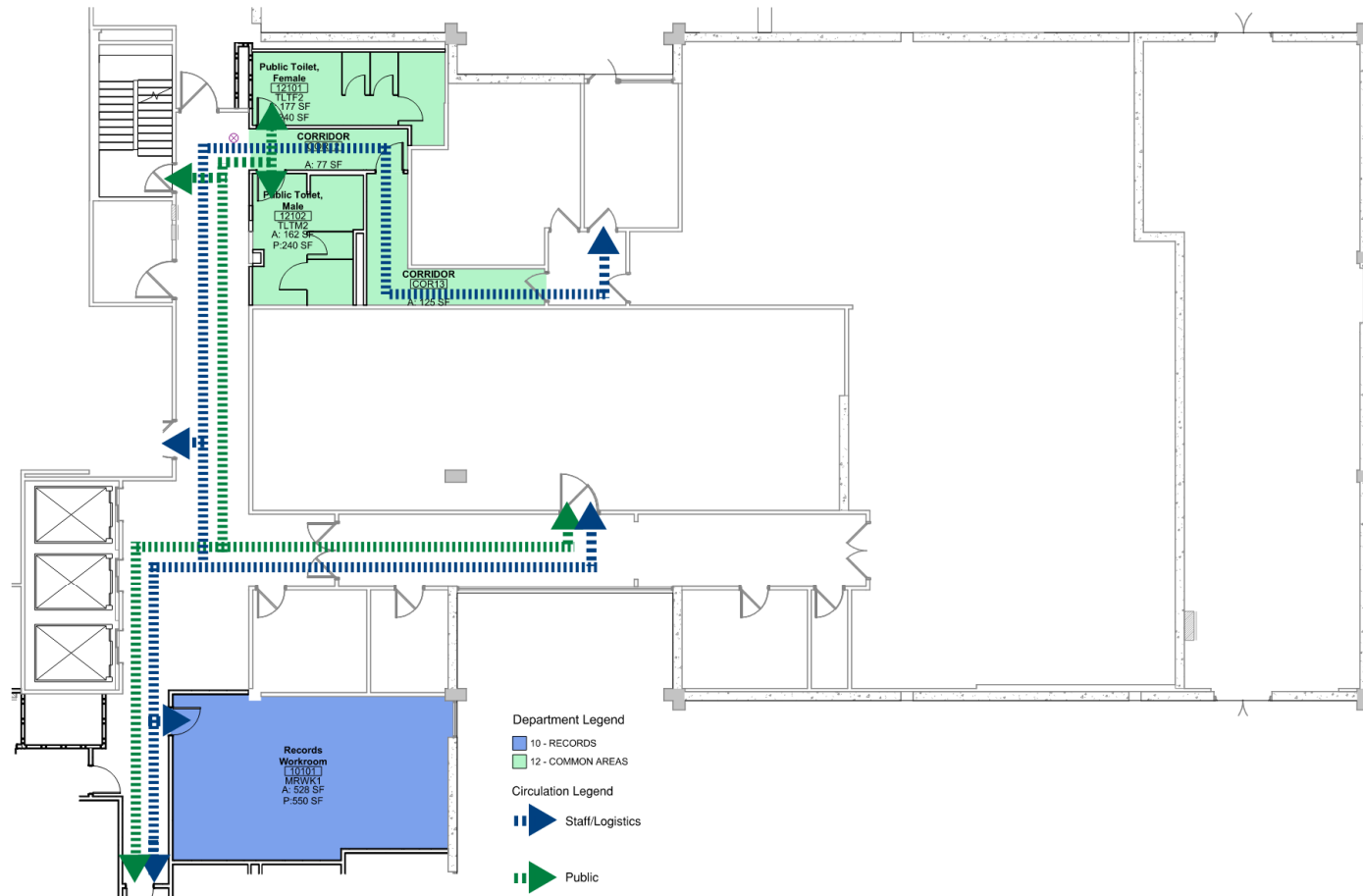




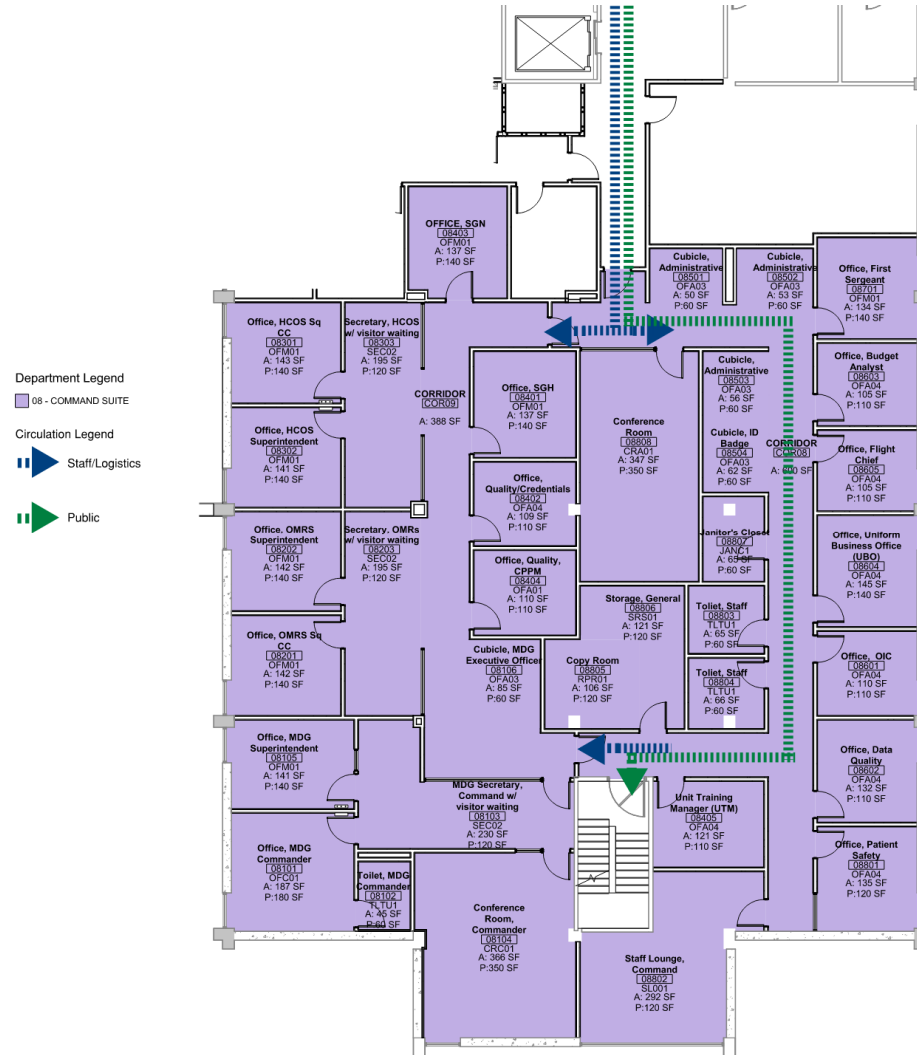
# Level 2 – BEE



## Level 2 – Records/ Common Areas

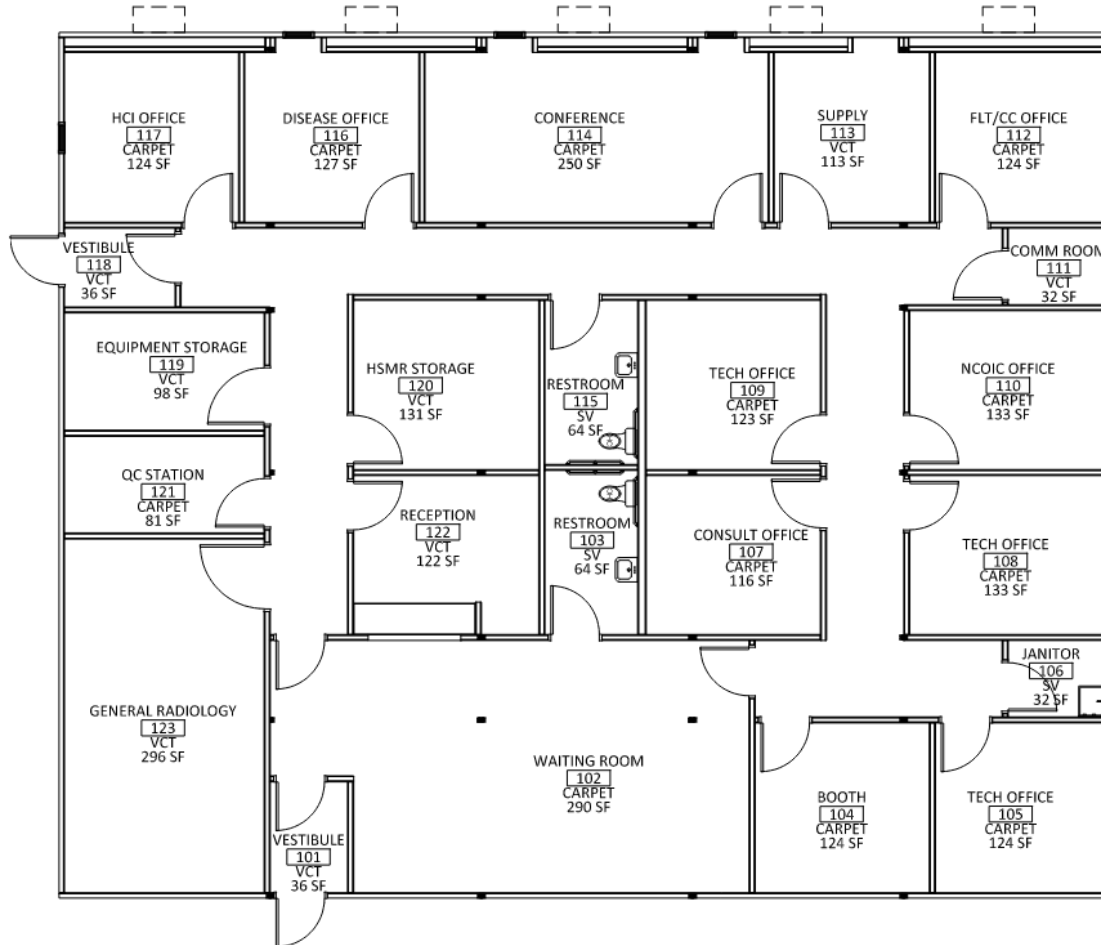


# Level 2 – Command

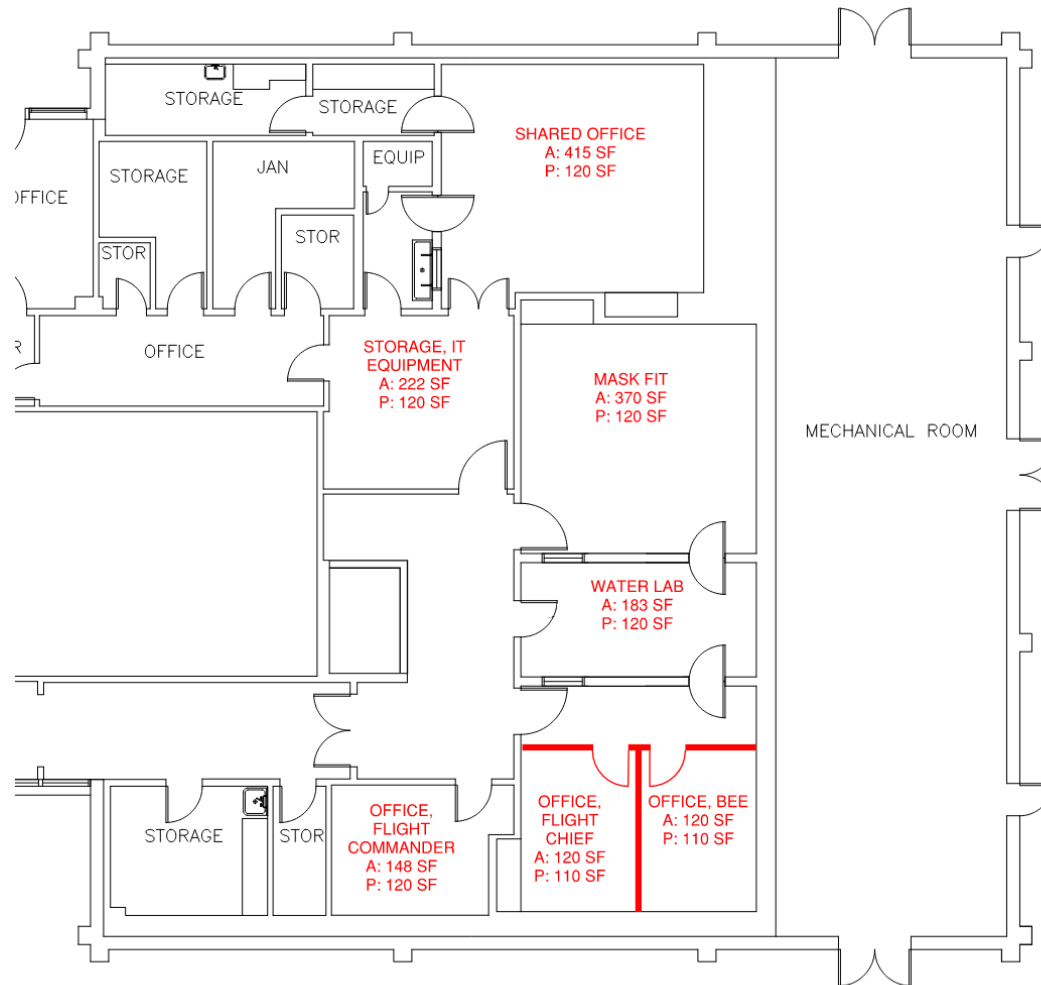


# TRANSITION SPACE

# TEMPORARY PHASING FACILITY PLAN



# TEMPORARY BEE PLAN



# TEMPORARY SYSTEMS PLAN

