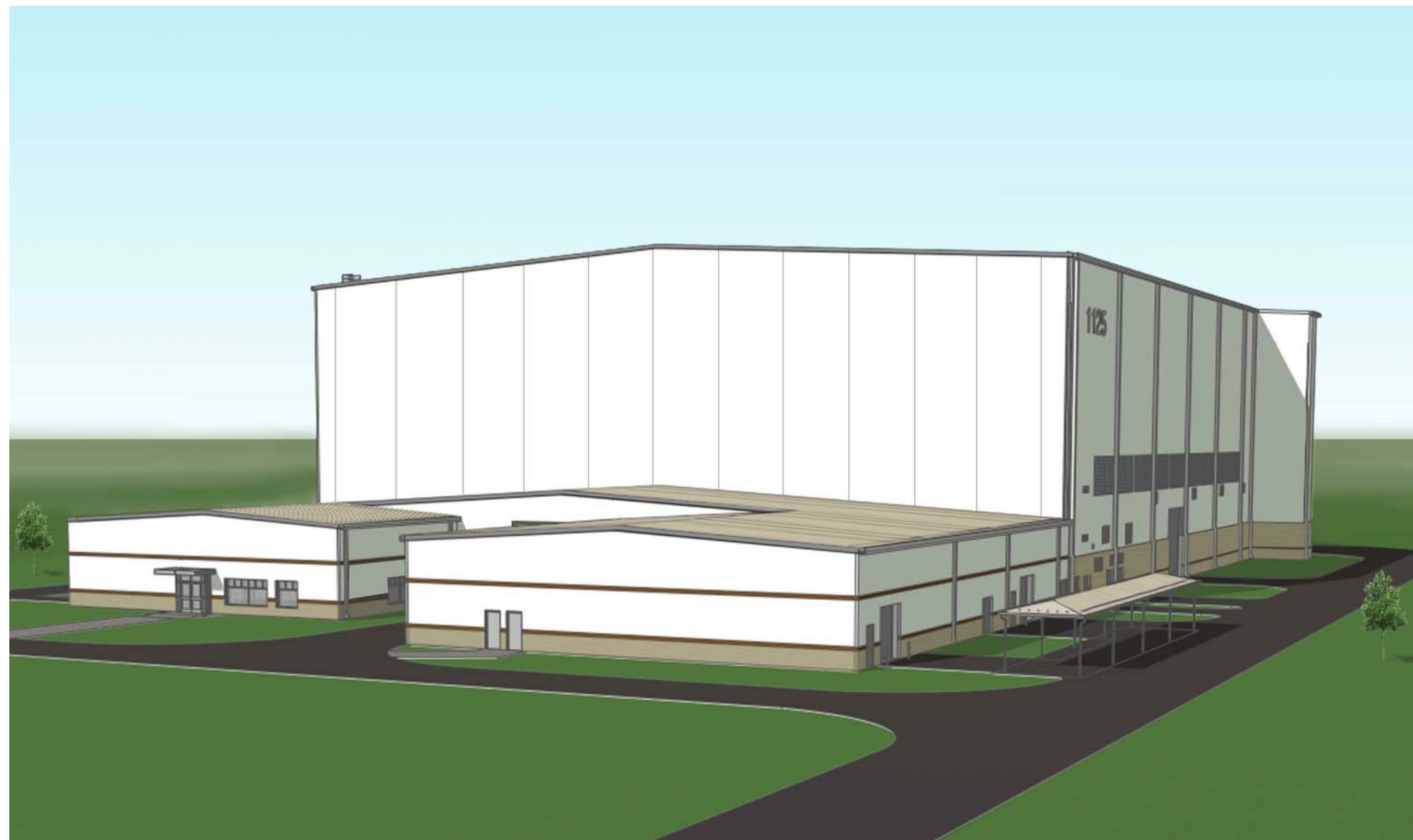


AIRFORCE CIVIL ENGINEERING CENTER DYNAMIC PROTOTYPE DEVELOPMENT GENERAL MAINTENANCE/PERIODIC INSPECTION HANGAR

FEBRUARY 2015



| DRAWING LIST | |
|--------------|------------------------|
| NUMBER | NAME |
| C-1 | COVER SHEET |
| A-1 | MODULES |
| A-2 | MODULES |
| A-3 | MODULES |
| A-4 | MODULES |
| A-5 | PROOF OF CONCEPT (POC) |

GENERAL NOTES

1. USE THESE DOCUMENTS IN CONJUNCTION WITH THE DESIGN CRITERIA, SUPPLEMENTAL RFP AND PROGRAMING SHEET.



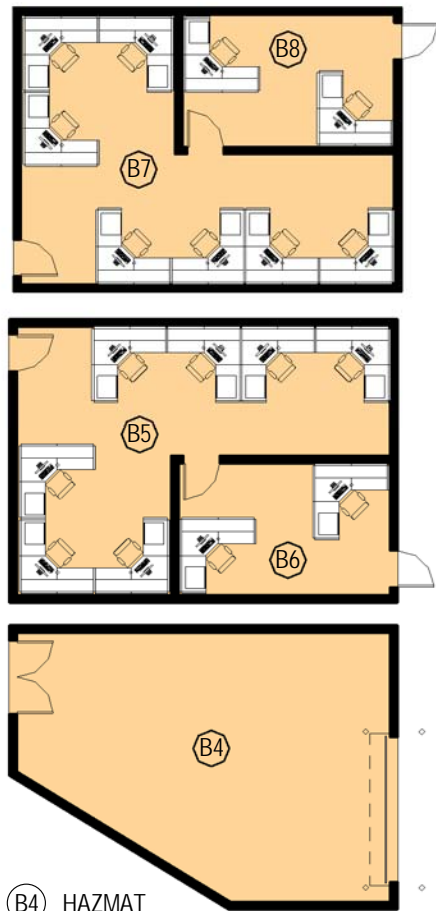
| No. | Rev. | Date | Approved |
|-----|------|------|----------|
| | | | |
| | | | |
| | | | |
| | | | |

| | | | | |
|---|----------------------|------------------------|--------------------------|-------------------------|
| Designed By: Designer | Drawn By: Drafter | Checked By: Checker | Reviewed By: Approver | FILE NAME: 22' x 34' |
| US ARMY ENGINEER DISTRICT CORPS OF ENGINEERS | | | | |

GENERAL MAINTENANCE/PERIODIC
INSPECTION HANGAR
COVER SHEET

SHEET
IDENTIFICATION
C-1

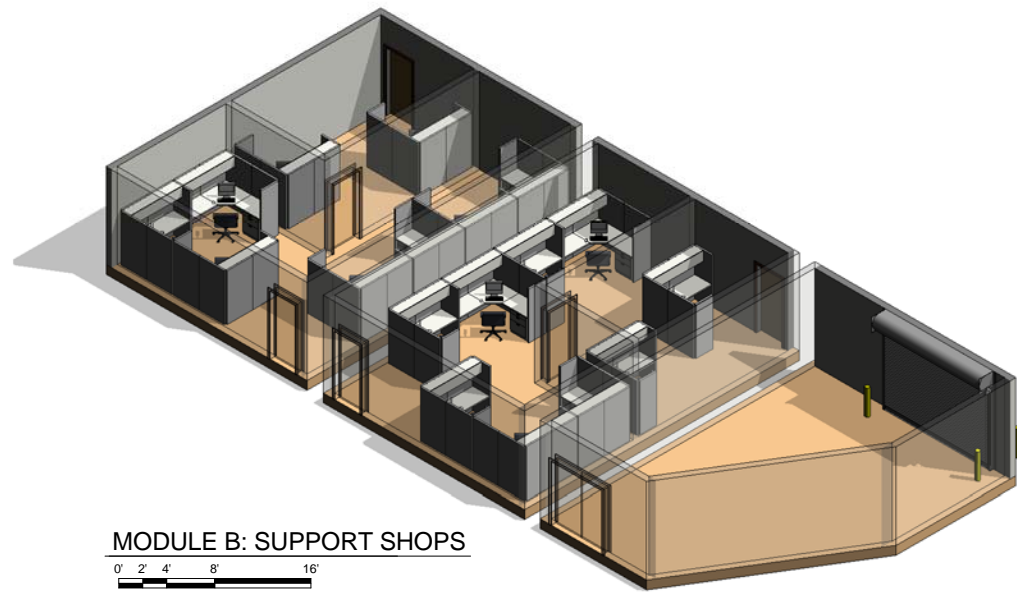
NOT FOR CONSTRUCTION



- (B4) HAZMAT
- (B5) AERO REPAIR
- (B6) AERO REPAIR OFFICE
- (B7) JETS
- (B8) JETS OFFICE

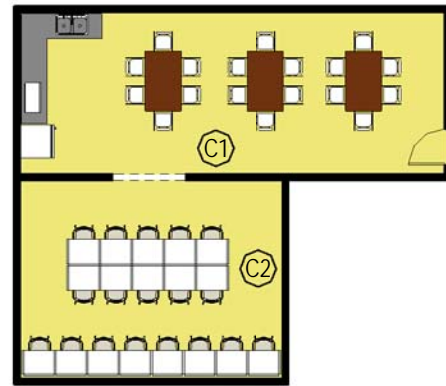
TOTAL AREA OF GROUP = 1,950 NET SF
TOTAL AREA OF MODULE = 3,950 NET SF

*NOTE: DAYLIGHTING PER UFC 1-200-02



MODULE B: SUPPORT SHOPS

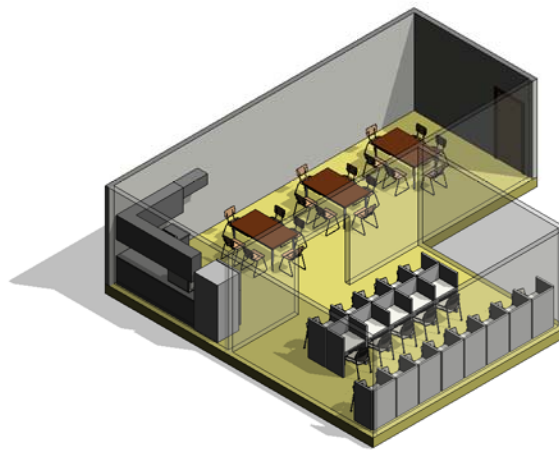
0' 2' 4' 8' 16'
SCALE: 1/8" = 1'



- (C1) BREAK ROOM
- (C2) PC ROOM

TOTAL AREA OF MODULE = 840 NET SF

*NOTE: DAYLIGHTING PER UFC 1-200-02



MODULE C: BREAK ROOM

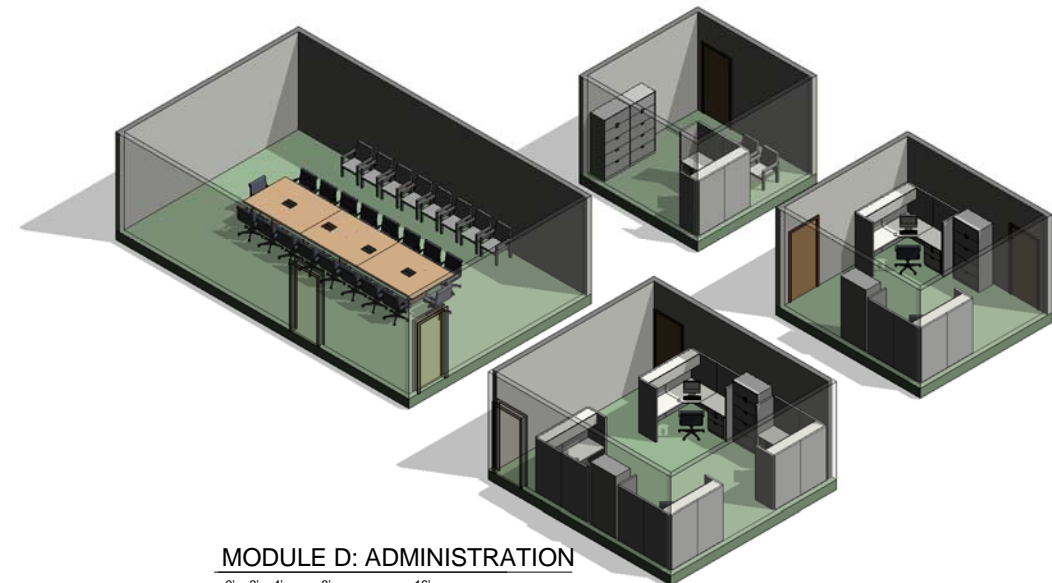
0' 2' 4' 8' 16'
SCALE: 1/8" = 1'



- (D1) CONFERENCE ROOM
- (D2) COORDINATOR OFFICE
- (D3) DOCK CHIEF
- (D4) OIC

TOTAL AREA OF GROUP = 1,475 NET SF

*NOTE: DAYLIGHTING PER UFC 1-200-02



MODULE D: ADMINISTRATION

0' 2' 4' 8' 16'
SCALE: 1/8" = 1'



US Army Corps of Engineers®

| No. | Rev. | Date | Approved |
|-----|------|------|----------|
| | | | |
| | | | |
| | | | |

| | | | |
|--------------|--|------------|-----------|
| Designed By: | | FILE NAME: | |
| Drawn By: | | SIZE: | 22" x 34" |
| Checked By: | | | |
| Reviewed By: | | | |
| | | | |

GENERAL MAINTENANCE/PERIODIC INSPECTION HANGAR
MODULES

SHEET IDENTIFICATION

A-2

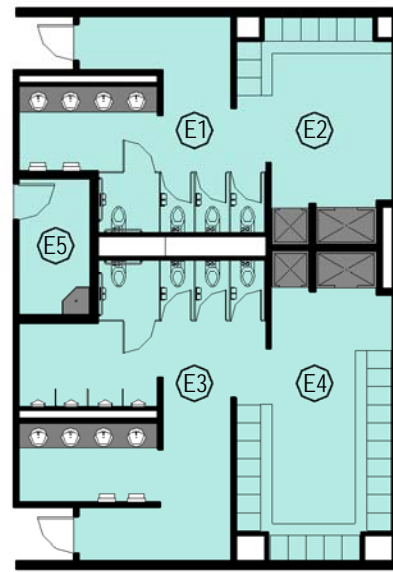
NOT FOR CONSTRUCTION

Revision Schedule

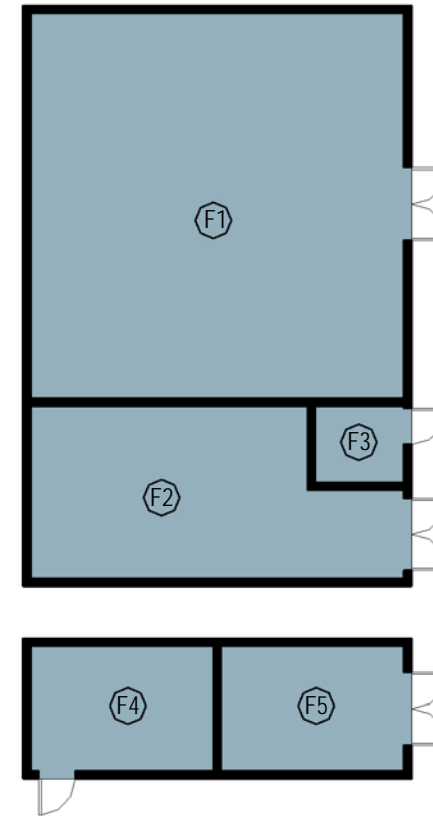
F
E
D
C
B
A



- (D5) FLIGHT CHIEF
 - (D6) RECORDS
 - (D7) OPEN OFFICE
- TOTAL AREA OF GROUP = 575 NET SF
 TOTAL AREA OF MODULE = 2,050 NET SF
- *NOTE: DAYLIGHTING PER UFC 1-200-02

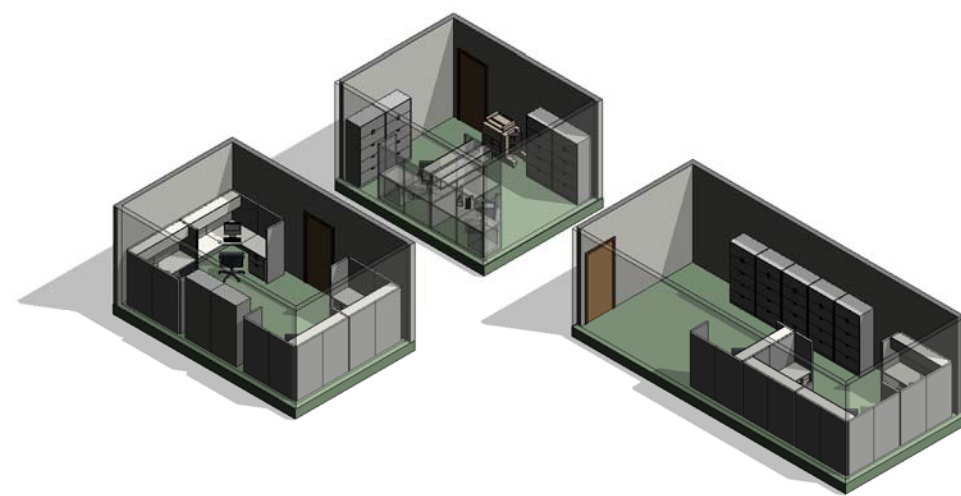


- (E1) WOMEN'S RESTROOM
 - (E2) WOMEN'S LOCKERS/SHOWERS
 - (E3) MEN'S RESTROOM
 - (E4) MEN'S LOCKERS/SHOWERS
 - (E5) JANITOR'S CLOSET
- TOTAL AREA OF MODULE = 1,235 NET SF
- *NOTE: DAYLIGHTING PER UFC 1-200-02



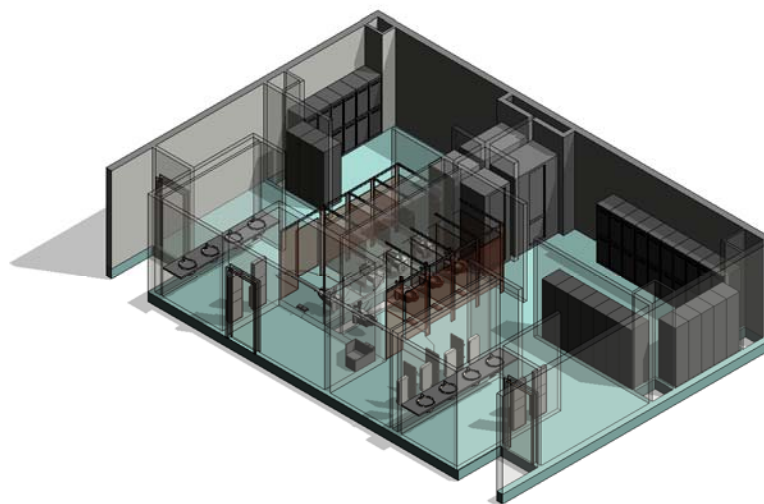
- (F1) MECHANICAL
 - (F2) ELECTRICAL
 - (F3) INVERTER ROOM
 - (F4) SIPR
 - (F5) CER
- TOTAL AREA OF GROUP = 1,760 NET SF
- *NOTE: DAYLIGHTING PER UFC 1-200-02

*BUILDING SUPPORT AREA ARE ESTIMATES ONLY. ACTUAL SIZE IS DEPENDENT ON REQUIREMENTS FOR CLIMATE ZONE, LOCATION, SYSTEMS, ETC.



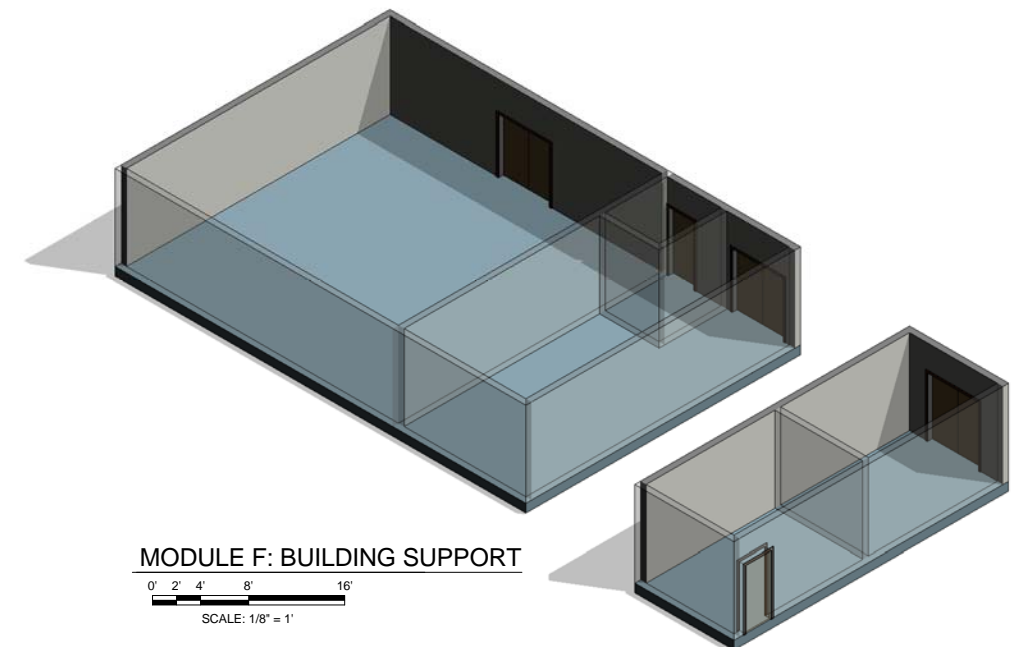
MODULE D: ADMINISTRATION

0' 2' 4' 8' 16'
SCALE: 1/8" = 1'



MODULE E: LOCKER/RESTROOM

0' 2' 4' 8' 16'
SCALE: 1/8" = 1'



MODULE F: BUILDING SUPPORT

0' 2' 4' 8' 16'
SCALE: 1/8" = 1'



US Army Corps of Engineers®

| No. | Rev. | Date | Approved |
|-----|------|------|----------|
| | | | |
| | | | |
| | | | |

| | | | | |
|----------------------------|------------------------------|--------------------------------------|---|-------------------------|
| DESIGNED BY: Designer | DRAWN BY: Drawn By | CHECKED BY: Checked By | REVIEWED BY: Reviewed By | FILE NAME: 22" x 34" |
| PROJECT NO. Project No. | CONTRACT NO. Contract No. | CONSTRUCTION NO. Construction No. | SOLICITATION NUMBER: Solicitation Number | |

US ARMY ENGINEER DISTRICT
CORPS OF ENGINEERS

GENERAL MAINTENANCE/PERIODIC
INSPECTION HANGAR

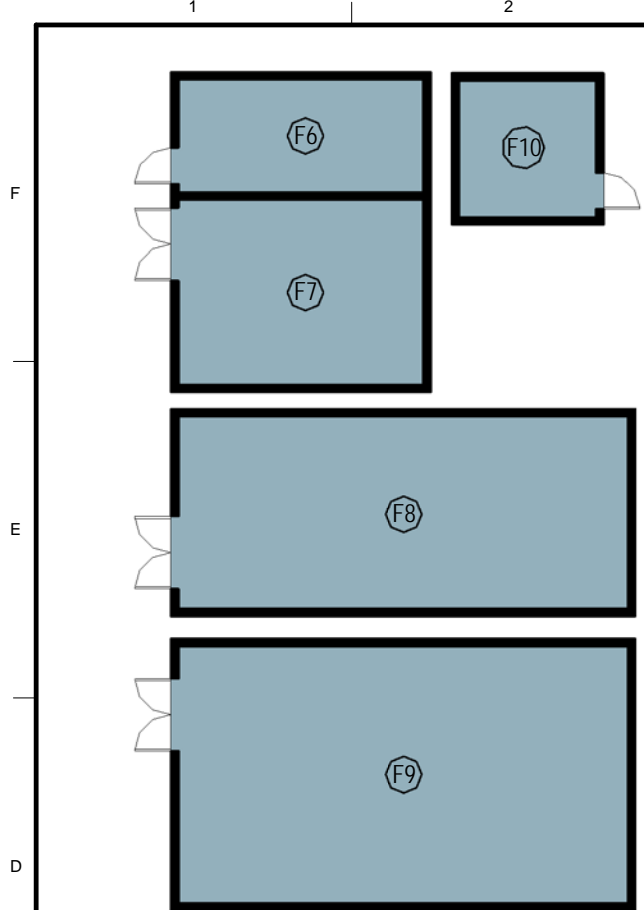
MODULES

SHEET IDENTIFICATION

A-3

NOT FOR CONSTRUCTION

Revision Schedule

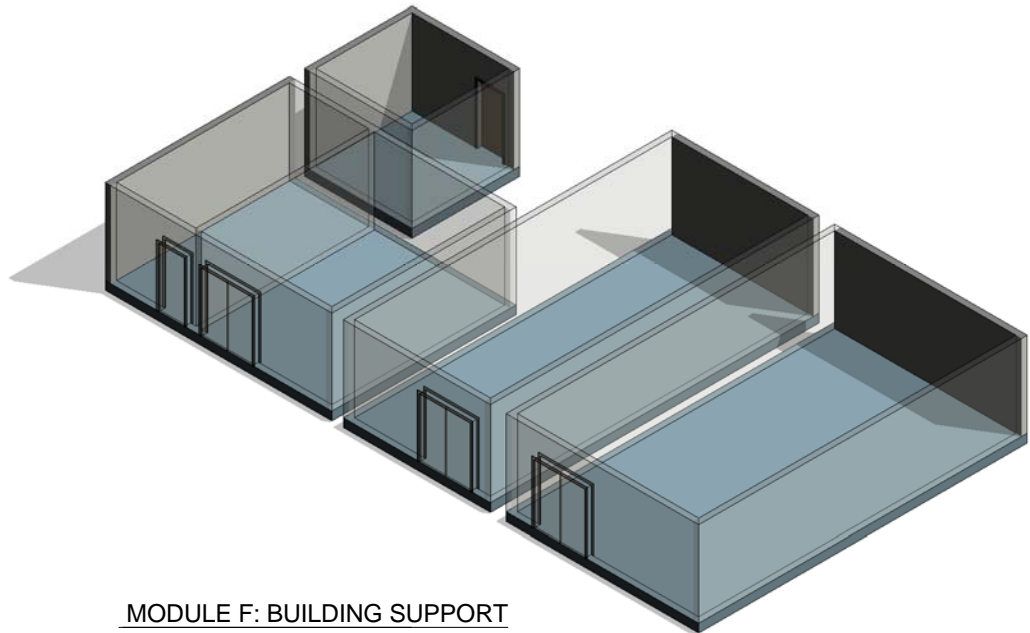


- (F6) ELECTRICAL
- (F7) MECHANICAL
- (F8) FOAM ROOM
- (F9) COMPRESSED AIR
- (F10) TELECOMMUNICATIONS ROOM (TR)

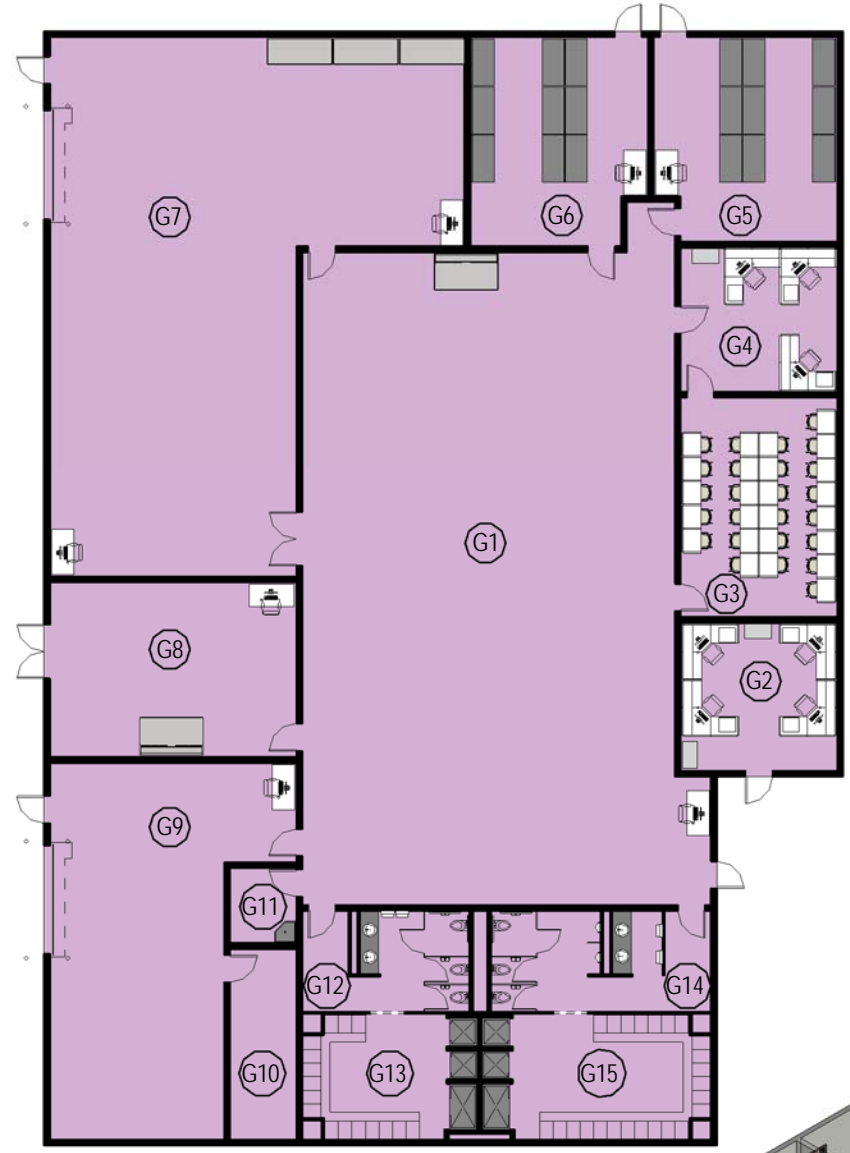
TOTAL AREA OF GROUP = 2,035 NET SF
 TOTAL AREA OF MODULE = 3,795 NET SF

*NOTE: DAYLIGHTING PER UFC 1-200-02

*BUILDING SUPPORT AREA ARE ESTIMATES ONLY. ACTUAL SIZE IS DEPENDENT ON REQUIREMENTS FOR CLIMATE ZONE, LOCATION, SYSTEMS, ETC.



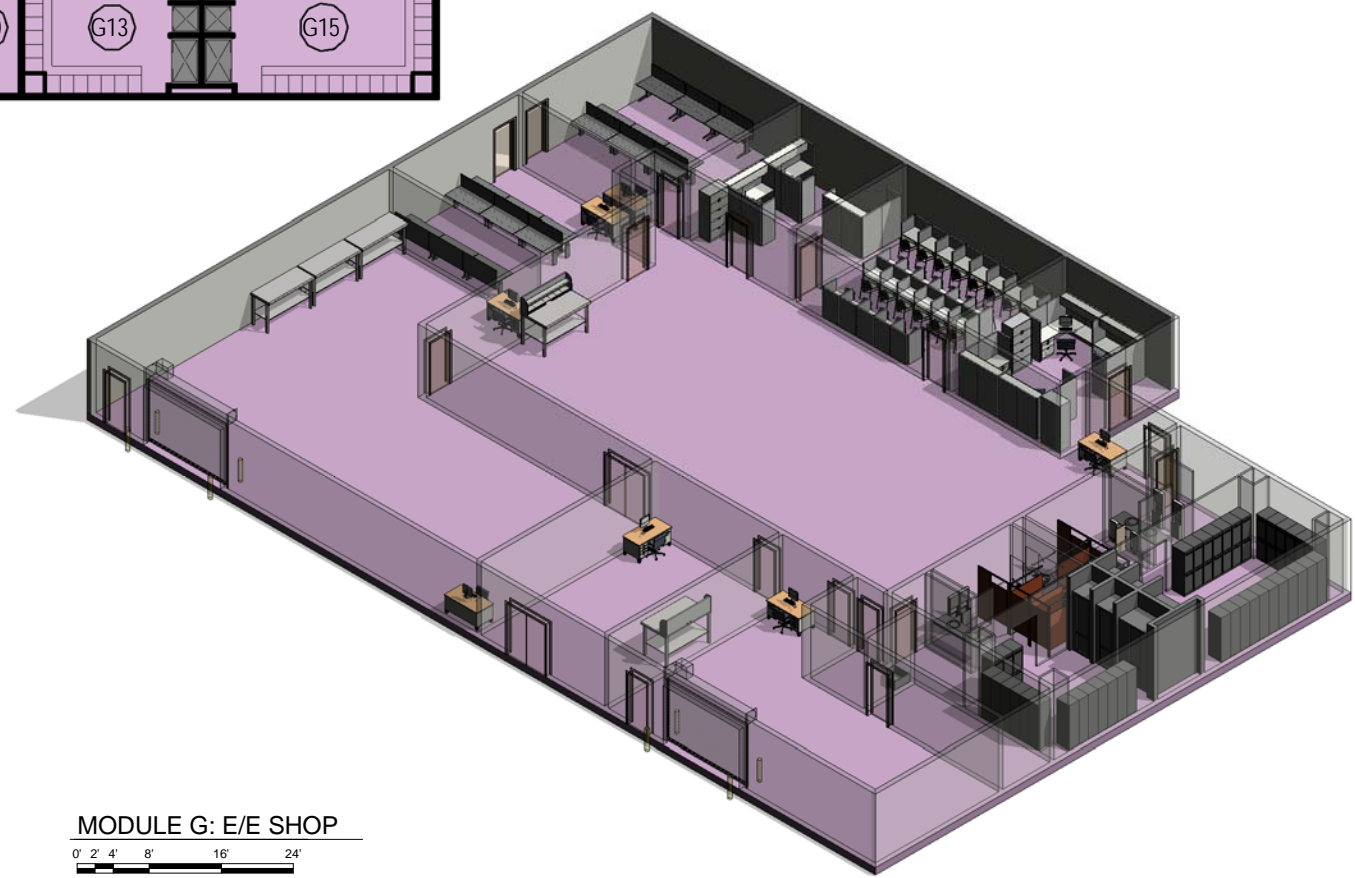
MODULE F: BUILDING SUPPORT
 0' 2' 4' 8' 16'
 SCALE: 1/8" = 1'



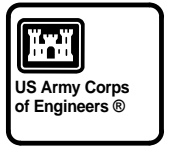
- (G1) WIRE MX SHOP
- (G2) E/E OPEN OFFICE
- (G3) INTERNET CAFE
- (G4) SECTION CHIEFS
- (G5) SLAB SHOP
- (G6) NI-CAD SHOP
- (G7) EE/AGE SHOP (GOX CART MX)
- (G8) LIFE RAFT CYLINDER SHOP
- (G9) NITROGEN SHOP (OBIGS MX)
- (G10) NITROGEN SHOP STORAGE
- (G11) JANITOR
- (G12) WOMEN'S RESTROOM
- (G13) WOMEN'S LOCKER/SHOWER
- (G14) MEN'S RESTROOM
- (G15) MEN'S LOCKER/SHOWER

TOTAL AREA OF MODULE = 9,740 NET SF

*NOTE: DAYLIGHTING PER UFC 1-200-02



MODULE G: E/E SHOP
 0' 2' 4' 8' 16' 24'
 SCALE: 3/32" = 1'



| No. | Rev. | Date | Approved |
|-----|------|------|----------|
| | | | |
| | | | |
| | | | |

| | |
|--------------|-----------------|
| Designed By: | FILE NAME: |
| Drawn By: | SIZE: 22" x 34" |
| Checked By: | |
| Reviewed By: | |
| | |

US ARMY ENGINEER DISTRICT
 CORPS OF ENGINEERS

GENERAL MAINTENANCE/PERIODIC
 INSPECTION HANGAR
 MODULES

SHEET IDENTIFICATION

A-4

NOT FOR CONSTRUCTION

