

GENERAL NOTES

1. USE THESE DOCUMENTS IN CONJUNCTION WITH THE STANDARD DESIGN DOCUMENT AND INTERACTIVE PROGRAMMING WORKSHEET.

DRAWING LIST	
NUMBER	NAME
C-1	COVER SHEET
A-1	STANDARD DESIGN PLAN
A-2	STANDARD DESIGN PLAN
A-3	MODULE A PLAN & AXON
A-4	MODULE B PLAN & AXON
A-5	MODULES C, & D PLANS & AXONS
A-6	MODULES E & F PLANS & AXONS
A-7	MODULES G & H PLANS & AXONS
A-8	MODULE J PLAN & AXON
A-9	MODULE K PLAN & AXON

# AIR FORCE STANDARD DESIGN FIGHTER HANGAR / AMU FACILITY



PHASE: DRAFT SUBMITTAL  
DATE: MARCH 2018  
SCALE: AS INDICATED

AIR FORCE  
CIVIL ENGINEER  
CENTER

FIGHTER HANGAR / AMU FACILITY  
ANY AFB, CONUS  
COVER SHEET

DRAFT  
MARCH 2018

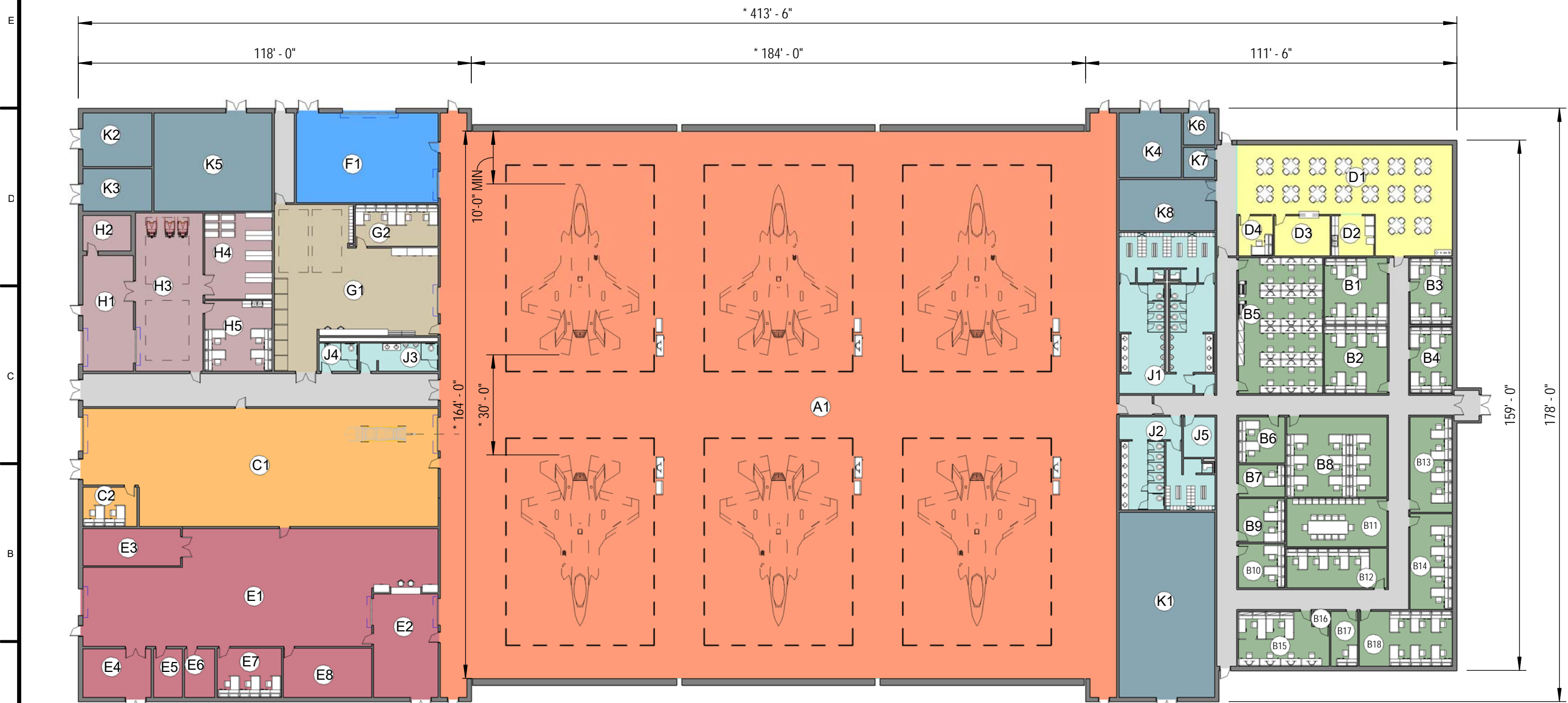
SHEET  
NUMBER  
C-1

**MODULE TYPE LEGEND**

 A - HANGAR BAY	 D - READY ROOM	 G - WHEEL & TIRE SHOP	 K - BUILDING SUPPORT
 B - ADMINISTRATION	 E - TOOL & PARTS SUPPORT	 H - EGRESS SHOP	 CIRCULATION
 C - PROPULSION SHOP	 F - AME STORAGE	 J - TOILET, SHOWER, LOCKER	

**BUILDING NOTES**

THIS BASIS OF DESIGN CONCEPT FLOOR PLAN IS BASED ON THE APPROVED FUNCTIONAL ADJACENCY DIAGRAM. THE ROOM CRITERIA IS LOCATED IN THE ROOM DATA SHEETS IN THE STANDARD DESIGN DOCUMENT AND THE ROOM SIZES ARE LOCATED IN THE INTERACTIVE PROGRAMMING WORKSHEET. THE OVERALL DIMENSIONS ARE APPROXIMATE AS THE BASIS OF DESIGN CONCEPT PLAN DOES NOT INDICATE STRUCTURAL ELEMENTS, ALL PLUMBING CHASES, MISCELLANEOUS UTILITY ROOMS (MECHANICAL, ELECTRICAL, COMMUNICATIONS) OR WALL THICKNESSES, ETC.



NOTE:  
 (\*) CLEAR DISTANCE IS DEPENDENT ON THE AIRCRAFT  
 THE FACILITY IS DESIGNED FOR (F35 SHOWN)

**STANDARD DESIGN PLAN 1**




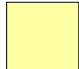



PHASE:	DRAFT SUBMITTAL
DATE:	MARCH 2018
SCALE:	AS INDICATED

**AIR FORCE  
 CIVIL ENGINEER  
 CENTER**

**FIGHTER HANGAR / AMU FACILITY  
 ANY AFB, CONUS  
 STANDARD DESIGN  
 PLAN**

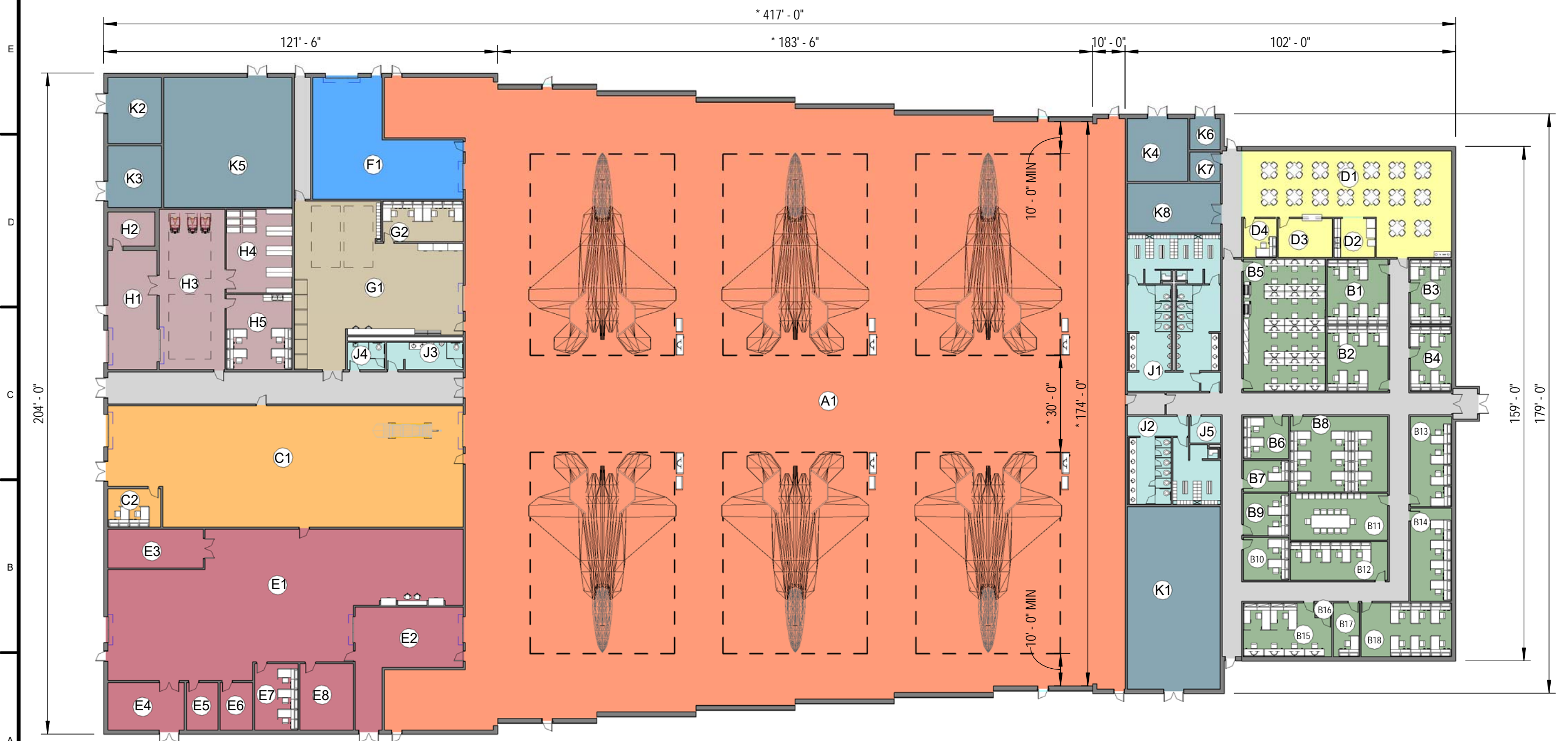
SHEET  
 NUMBER  
**A-1**

**MODULE TYPE LEGEND**

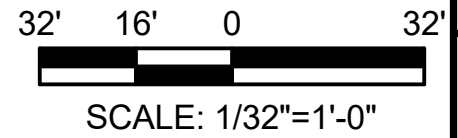
 A - HANGAR BAY	 D - READY ROOM	 G - WHEEL & TIRE SHOP	 K - BUILDING SUPPORT
 B - ADMINISTRATION	 E - TOOL & PARTS SUPPORT	 H - EGRESS SHOP	 CIRCULATION
 C - PROPULSION SHOP	 F - AME STORAGE	 J - TOILET, SHOWER, LOCKER	

**BUILDING NOTES**

THIS BASIS OF DESIGN CONCEPT FLOOR PLAN IS BASED ON THE APPROVED FUNCTIONAL ADJACENCY DIAGRAM. THE ROOM CRITERIA IS LOCATED IN THE ROOM DATA SHEETS IN THE STANDARD DESIGN DOCUMENT AND THE ROOM SIZES ARE LOCATED IN THE INTERACTIVE PROGRAMMING WORKSHEET. THE OVERALL DIMENSIONS ARE APPROXIMATE AS THE BASIS OF DESIGN CONCEPT PLAN DOES NOT INDICATE STRUCTURAL ELEMENTS, ALL PLUMBING CHASES, MISCELLANEOUS UTILITY ROOMS ( MECHANICAL, ELECTRICAL, COMMUNICATIONS) OR WALL THICKNESSES, ETC.



NOTE:  
 (\*) CLEAR DISTANCE IS DEPENDENT ON THE AIRCRAFT  
 THE FACILITY IS DESIGNED FOR (F22 SHOWN)



**STANDARD DESIGN 2**

PHASE:	DRAFT SUBMITTAL
DATE:	MARCH 2018
SCALE:	AS INDICATED

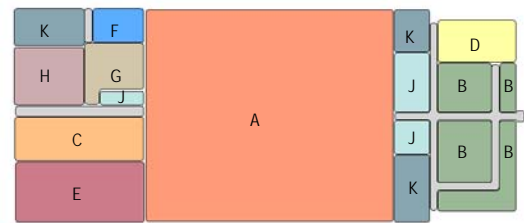
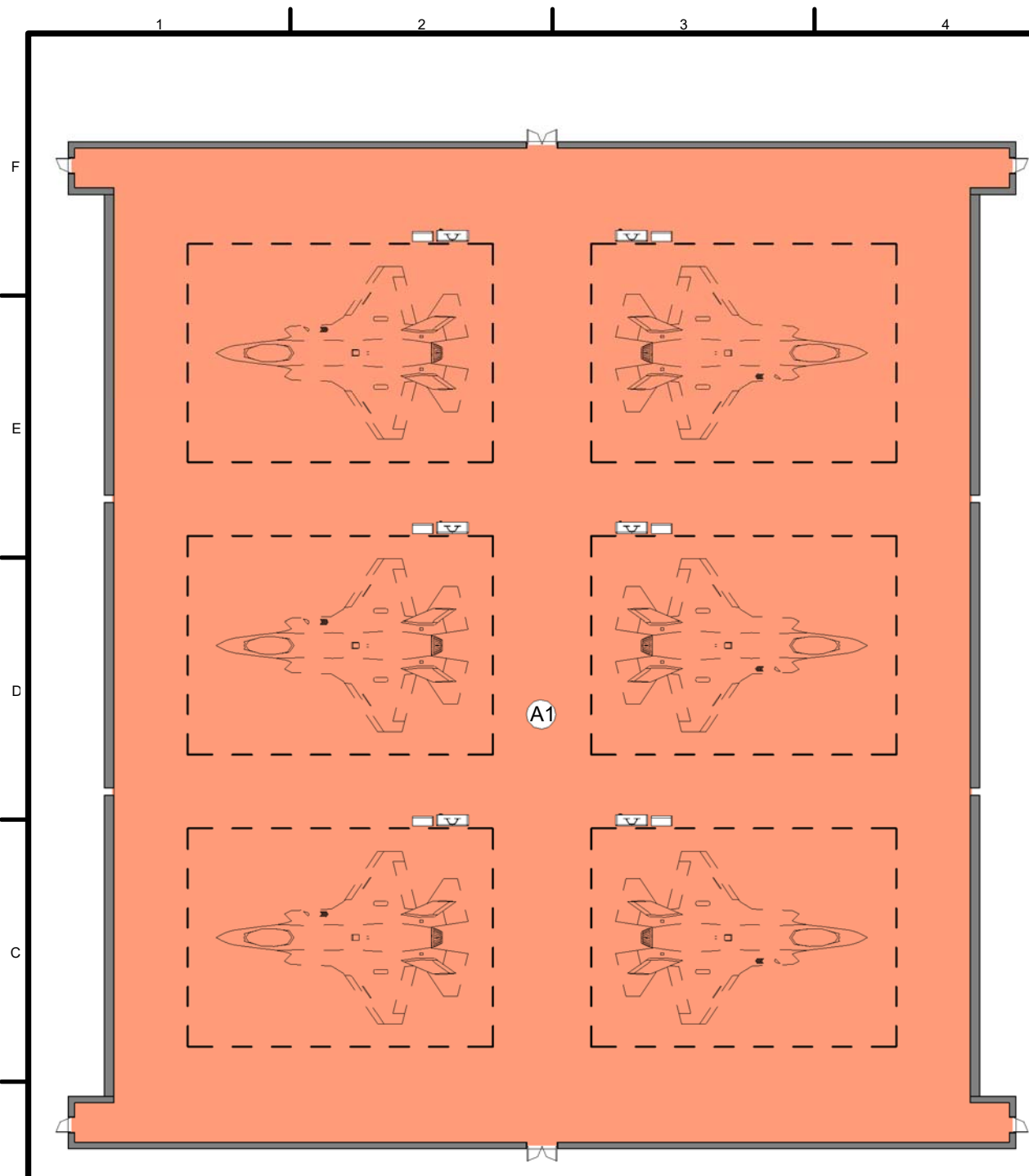
**AIR FORCE  
 CIVIL ENGINEER  
 CENTER**

**FIGHTER HANGAR / AMU FACILITY  
 ANY AFB .CONUS  
 STANDARD DESIGN  
 PLAN**

SHEET NUMBER  
**A-2**

NOT FOR CONSTRUCTION

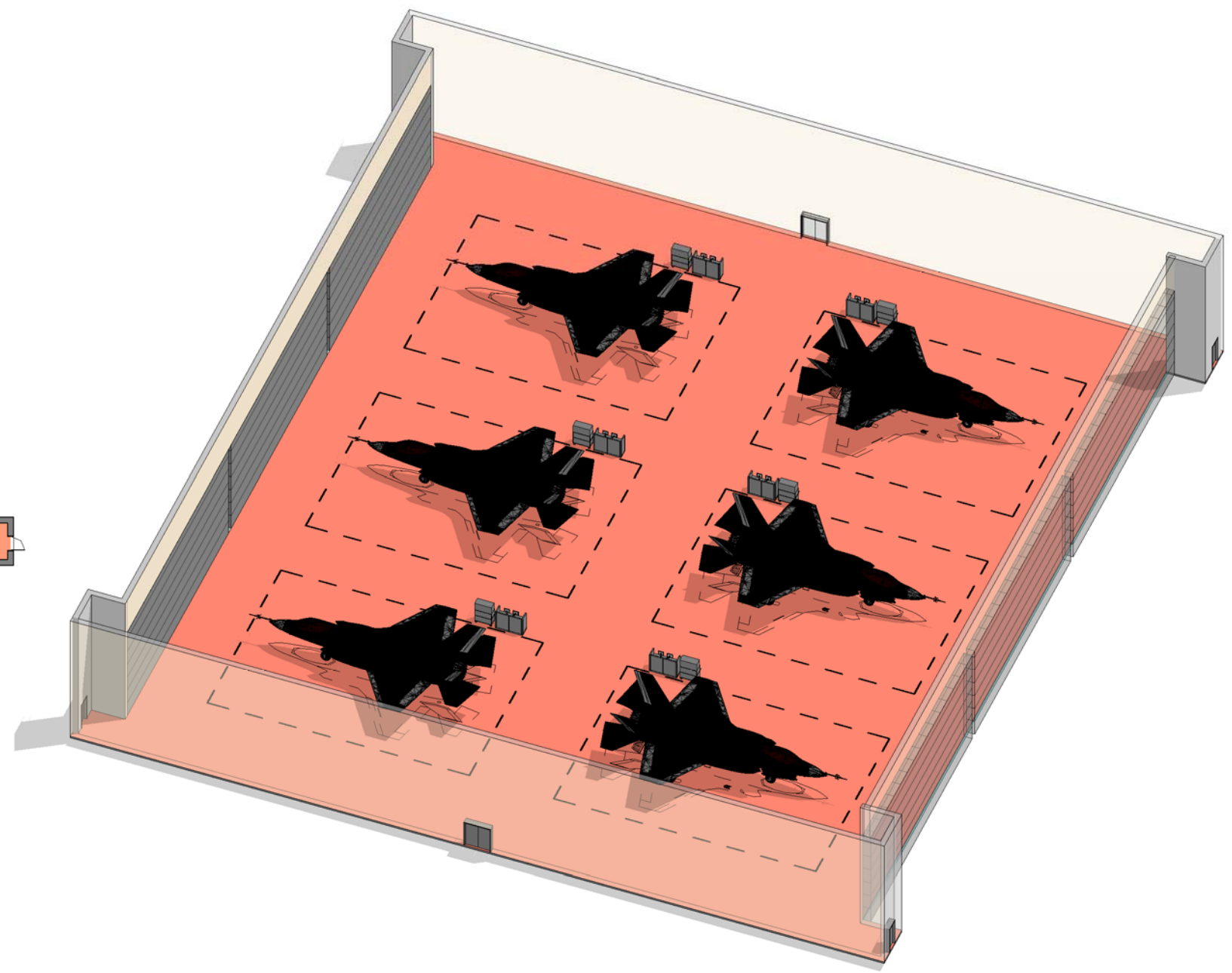
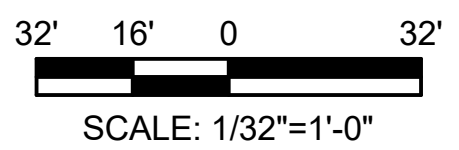




**KEYPLAN**

(A) HANGAR BAY  
 MODULE NET AREA: 33,480 SF

**MODULE A:  
 HANGAR BAY**

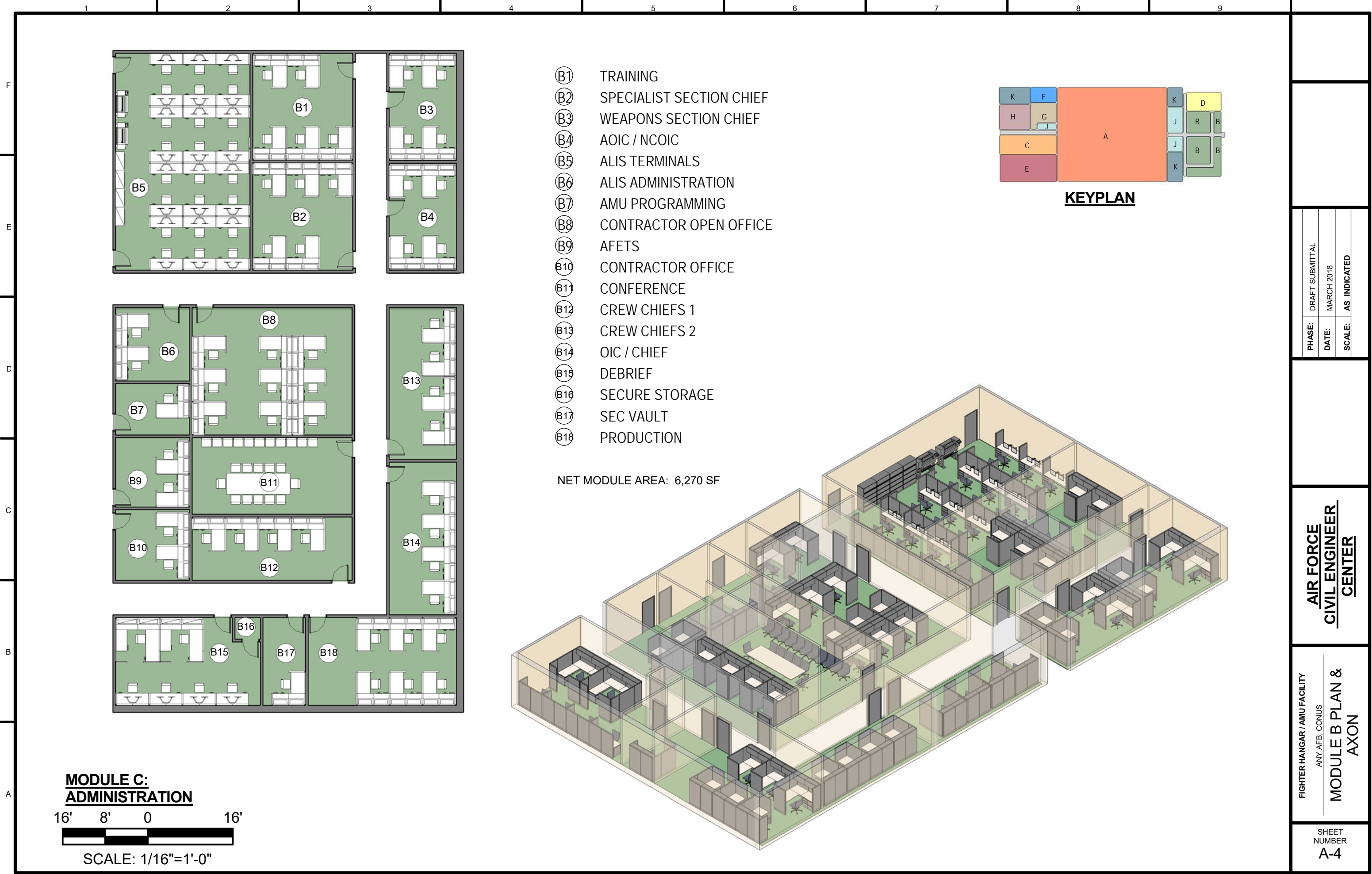


PHASE:	DRAFT SUBMITTAL
DATE:	MARCH 2018
SCALE:	AS INDICATED

**AIR FORCE  
 CIVIL ENGINEER  
 CENTER**

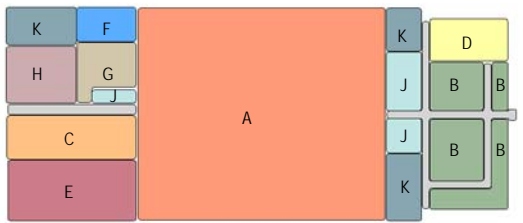
FIGHTER HANGAR / AMU FACILITY  
 ANY AFB, CONUS  
**MODULE A PLAN &  
 AXON**

SHEET  
 NUMBER  
**A-3**



- ⓑ1 TRAINING
- ⓑ2 SPECIALIST SECTION CHIEF
- ⓑ3 WEAPONS SECTION CHIEF
- ⓑ4 AOIC / NCOIC
- ⓑ5 ALIS TERMINALS
- ⓑ6 ALIS ADMINISTRATION
- ⓑ7 AMU PROGRAMMING
- ⓑ8 CONTRACTOR OPEN OFFICE
- ⓑ9 AFETS
- ⓑ10 CONTRACTOR OFFICE
- ⓑ11 CONFERENCE
- ⓑ12 CREW CHIEFS 1
- ⓑ13 CREW CHIEFS 2
- ⓑ14 OIC / CHIEF
- ⓑ15 DEBRIEF
- ⓑ16 SECURE STORAGE
- ⓑ17 SEC VAULT
- ⓑ18 PRODUCTION

NET MODULE AREA: 6,270 SF



**KEYPLAN**

**MODULE C:  
ADMINISTRATION**

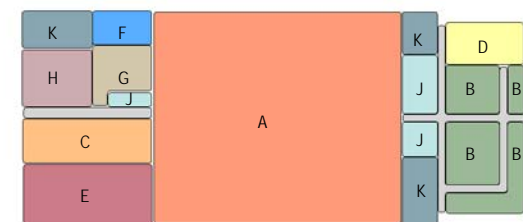
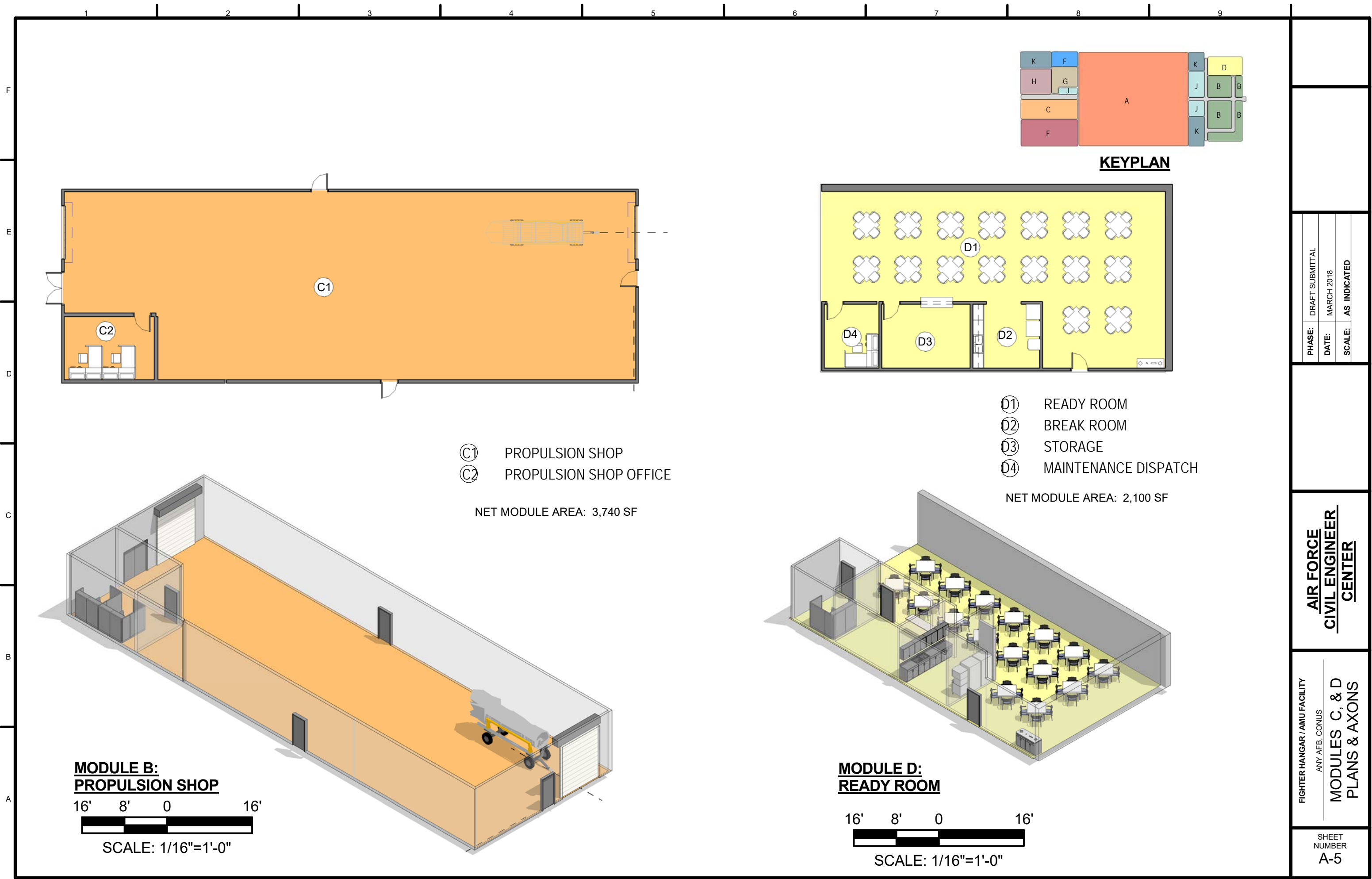


PHASE:	DRAFT SUBMITTAL
DATE:	MARCH 2018
SCALE:	AS INDICATED

**AIR FORCE  
CIVIL ENGINEER  
CENTER**

FIGHTER HANGAR / AMU FACILITY  
ANY AFB, CONUS  
**MODULE B PLAN &  
AXON**

SHEET  
NUMBER  
**A-4**



**KEYPLAN**

- ⓐ PROPULSION SHOP
- ⓑ PROPULSION SHOP OFFICE

NET MODULE AREA: 3,740 SF

- ⓓ1 READY ROOM
- ⓓ2 BREAK ROOM
- ⓓ3 STORAGE
- ⓓ4 MAINTENANCE DISPATCH

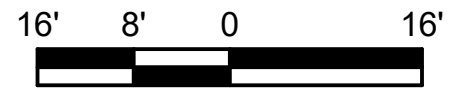
NET MODULE AREA: 2,100 SF

**MODULE B:  
PROPULSION SHOP**



SCALE: 1/16"=1'-0"

**MODULE D:  
READY ROOM**



SCALE: 1/16"=1'-0"

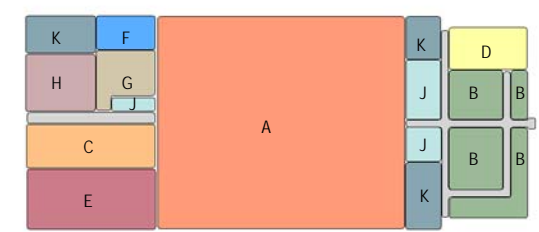
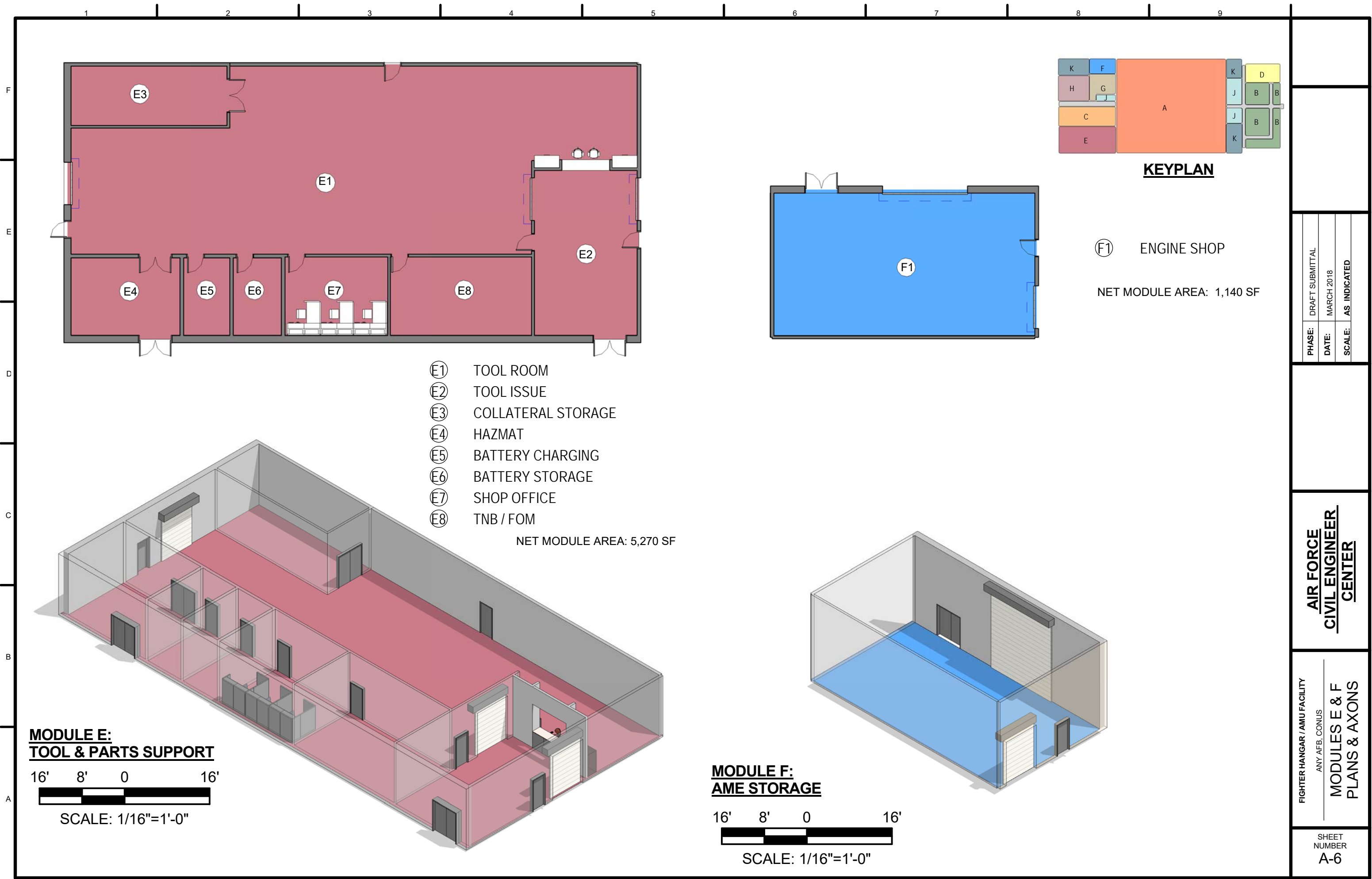
PHASE:	DRAFT SUBMITTAL
DATE:	MARCH 2018
SCALE:	AS INDICATED

**AIR FORCE  
CIVIL ENGINEER  
CENTER**

FIGHTER HANGAR / AMU FACILITY  
ANY AFB, CONUS  
**MODULES C, & D  
PLANS & AXONS**

SHEET  
NUMBER  
A-5



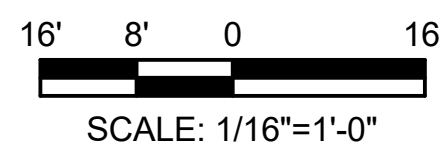


**KEYPLAN**

Ⓕ ENGINE SHOP  
 NET MODULE AREA: 1,140 SF

- Ⓕ TOOL ROOM
  - Ⓕ TOOL ISSUE
  - Ⓕ COLLATERAL STORAGE
  - Ⓕ HAZMAT
  - Ⓕ BATTERY CHARGING
  - Ⓕ BATTERY STORAGE
  - Ⓕ SHOP OFFICE
  - Ⓕ TNB / FOM
- NET MODULE AREA: 5,270 SF

**MODULE E:  
 TOOL & PARTS SUPPORT**



**MODULE F:  
 AME STORAGE**

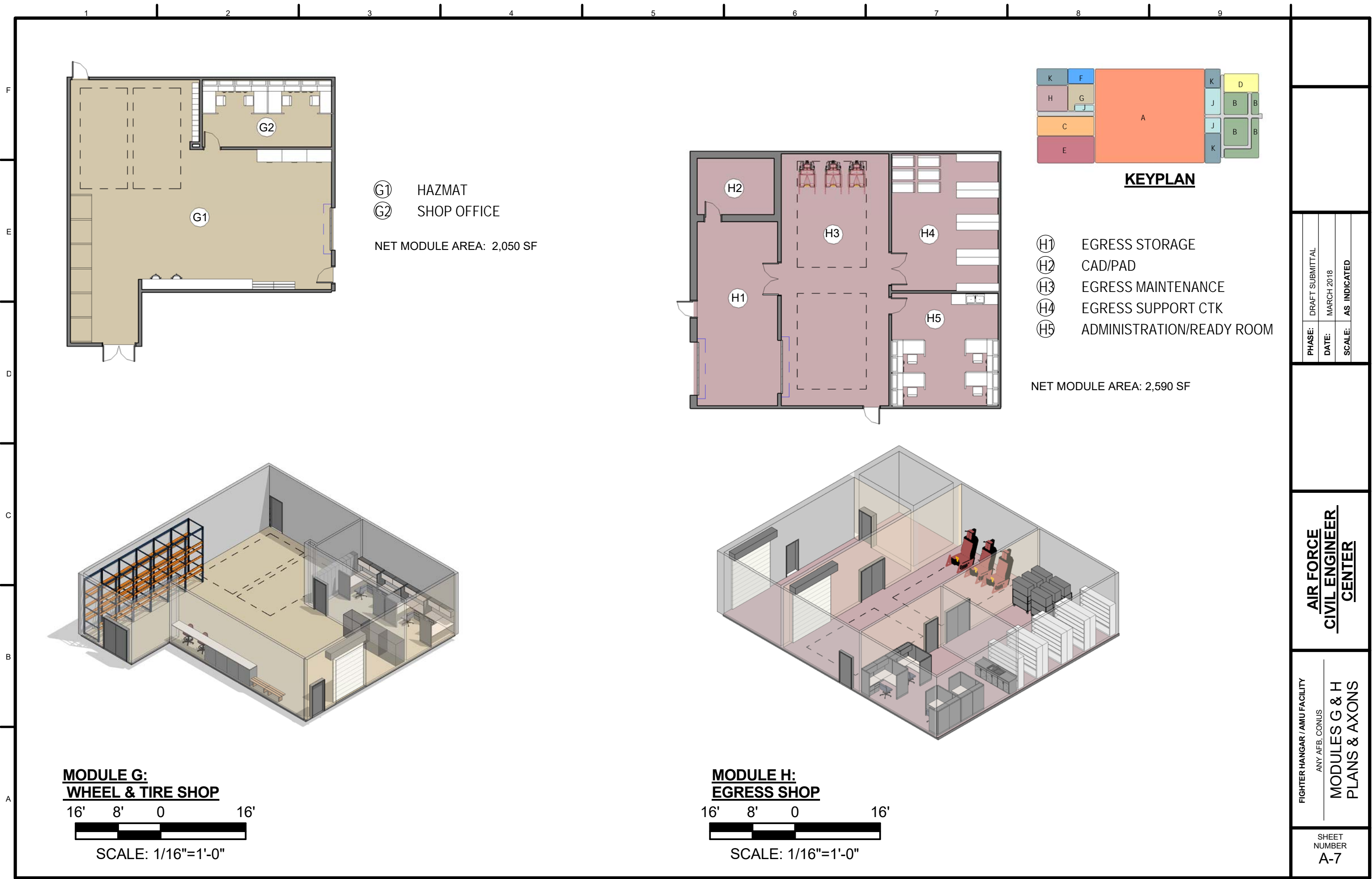


PHASE:	DRAFT SUBMITTAL
DATE:	MARCH 2018
SCALE:	AS INDICATED

**AIR FORCE  
 CIVIL ENGINEER  
 CENTER**

FIGHTER HANGAR / AMU FACILITY  
 ANY AFB, CONUS  
**MODULES E & F  
 PLANS & AXONS**

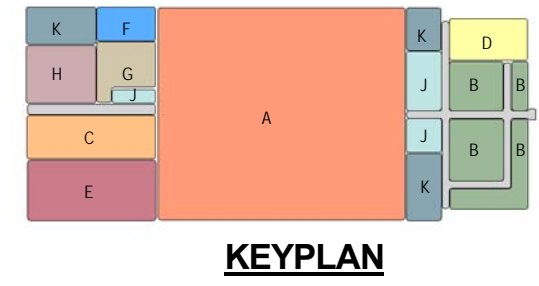
SHEET  
 NUMBER  
**A-6**



**MODULE G:  
WHEEL & TIRE SHOP**

16' 8' 0 16'  
SCALE: 1/16"=1'-0"

- ⓐ HAZMAT
  - ⓑ SHOP OFFICE
- NET MODULE AREA: 2,050 SF



- ⓐ EGRESS STORAGE
  - ⓑ CAD/PAD
  - ⓒ EGRESS MAINTENANCE
  - ⓓ EGRESS SUPPORT CTK
  - ⓔ ADMINISTRATION/READY ROOM
- NET MODULE AREA: 2,590 SF

**MODULE H:  
EGRESS SHOP**

16' 8' 0 16'  
SCALE: 1/16"=1'-0"

PHASE:	DRAFT SUBMITTAL
DATE:	MARCH 2018
SCALE:	AS INDICATED

**AIR FORCE  
CIVIL ENGINEER  
CENTER**

FIGHTER HANGAR / AMU FACILITY  
ANY AFB, CONUS  
**MODULES G & H  
PLANS & AXONS**

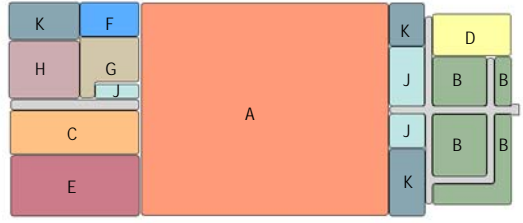
SHEET  
NUMBER  
**A-7**





- ① MEN'S TOILET, SHOWER, LOCKER
- ② WOMEN'S TOILET, SHOWER, LOCKER
- ③ MEN'S TOILET
- ④ WOMEN'S TOILET
- ⑤ JANITOR

NET MODULE AREA: 2,325 SF



**KEYPLAN**

**MODULE J:  
WHEEL & TIRE SHOP**



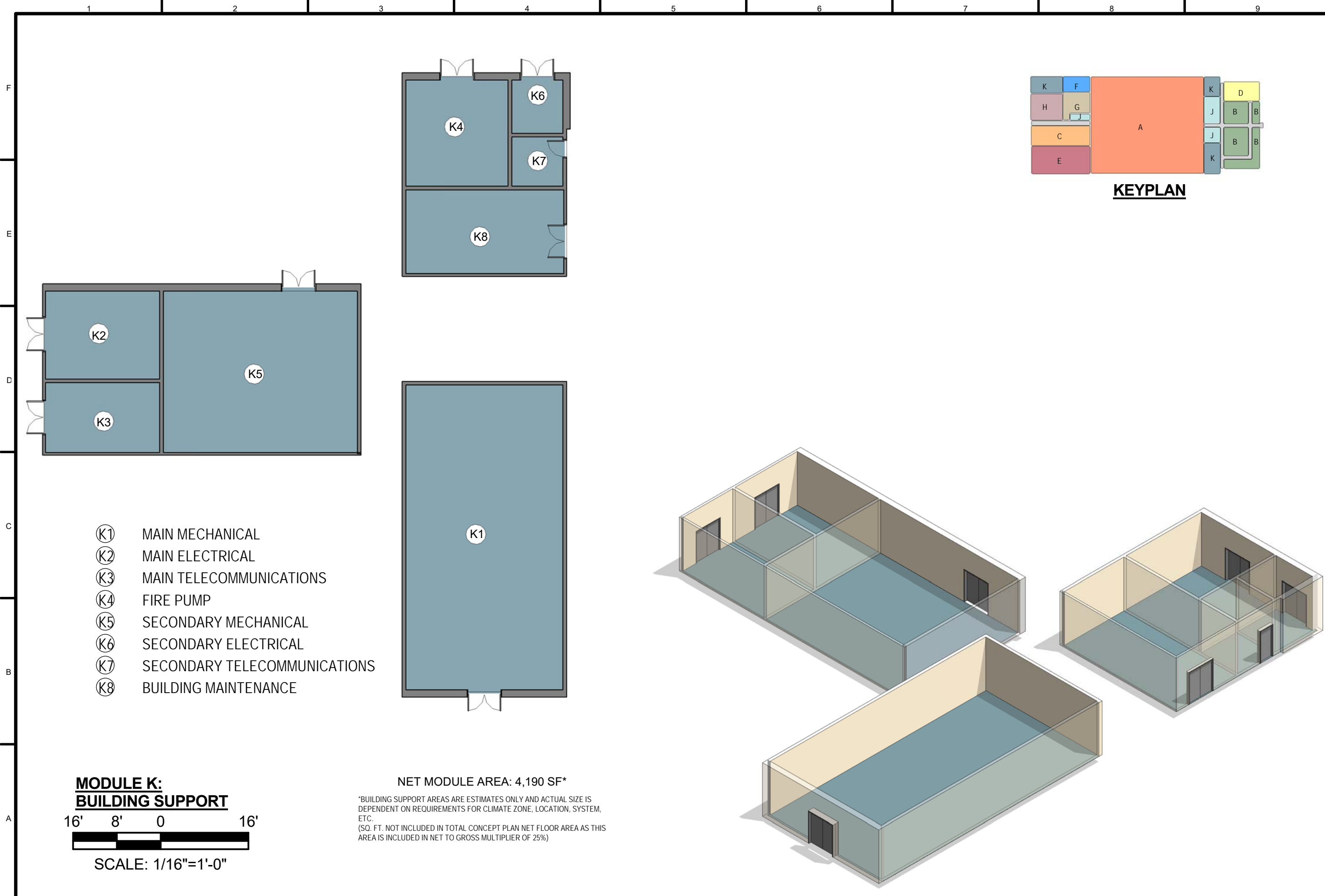
SCALE: 1/16"=1'-0"

PHASE:	DRAFT SUBMITTAL
DATE:	MARCH 2018
SCALE:	AS INDICATED

**AIR FORCE  
CIVIL ENGINEER  
CENTER**

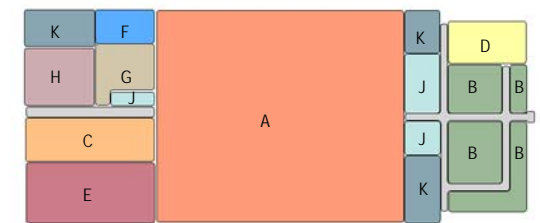
FIGHTER HANGAR / AMU FACILITY  
ANY AFB, CONUS  
**MODULE J PLAN &  
AXON**

SHEET  
NUMBER  
**A-8**



F  
E  
D  
C  
B  
A

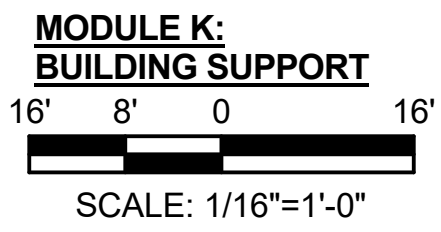
- (K1) MAIN MECHANICAL
- (K2) MAIN ELECTRICAL
- (K3) MAIN TELECOMMUNICATIONS
- (K4) FIRE PUMP
- (K5) SECONDARY MECHANICAL
- (K6) SECONDARY ELECTRICAL
- (K7) SECONDARY TELECOMMUNICATIONS
- (K8) BUILDING MAINTENANCE



**KEYPLAN**

NET MODULE AREA: 4,190 SF\*

\*BUILDING SUPPORT AREAS ARE ESTIMATES ONLY AND ACTUAL SIZE IS DEPENDENT ON REQUIREMENTS FOR CLIMATE ZONE, LOCATION, SYSTEM, ETC.  
(SQ. FT. NOT INCLUDED IN TOTAL CONCEPT PLAN NET FLOOR AREA AS THIS AREA IS INCLUDED IN NET TO GROSS MULTIPLIER OF 25%)



PHASE:	DRAFT SUBMITTAL
DATE:	MARCH 2018
SCALE:	AS INDICATED

**AIR FORCE  
CIVIL ENGINEER  
CENTER**

FIGHTER HANGAR / AMU FACILITY  
ANY AFB, CONUS  
**MODULE K PLAN &  
AXON**

SHEET  
NUMBER  
**A-9**