

TSEWG TP-3: SURGE PROTECTOR PERFORMANCE AND EVALUATION CRITERIA

SURGE PROTECTION DESIGN.

Parallel Versus Series Protection.

Surge protectors within the scope of this UFC should normally be of the parallel type rather than the series type. Parallel surge protectors are connected in parallel with the circuit and operate when a transient voltage exceeds a preset limit. Parallel surge protectors have little interaction with the circuit under normal conditions.

Parallel surge protector connections might be in-line (with effectively no lead wire length) or as a 'T' with some lead wire length. The in-line approach might be ampacity limited.

Series surge protectors are connected in series with the circuit and must be capable of carrying the circuit's full load current. Also, loss of the series surge protector will mean loss of power to all downstream equipment. For this reason, series surge protectors are usually used only to protect individual loads and usually include some level of filtering also.

Multiple Layer Protection Design.


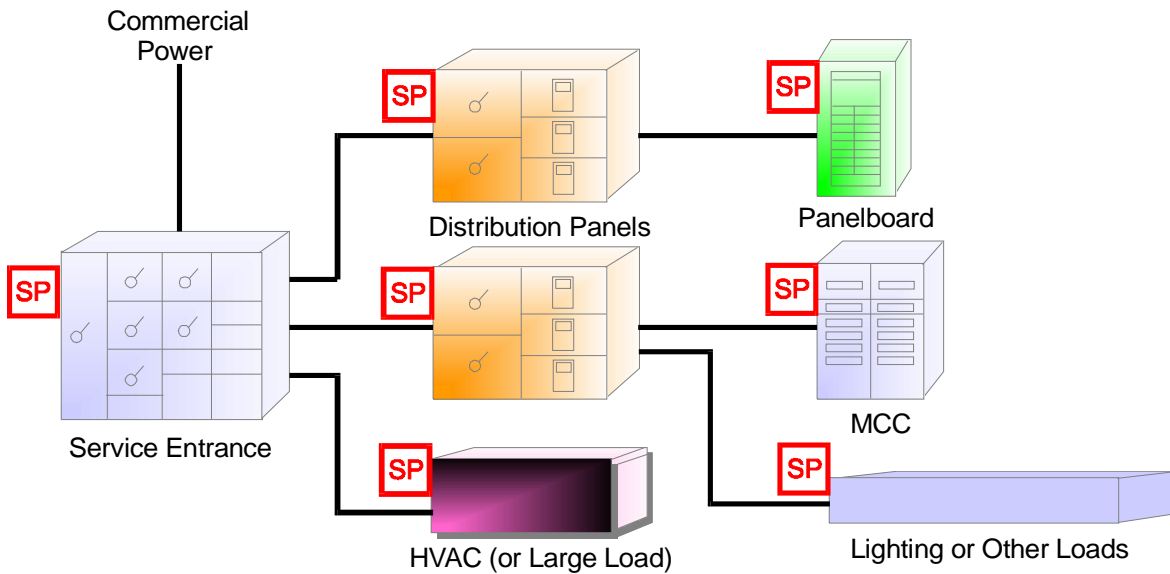
Apply surge protection in a multiple layer approach. Figure 1 shows the preferred design approach with surge protection installed at the service entrance, and additional layers of surge protection provided at load centers, panelboards, and MCCs. Referring to Figure 1, a protector installed at the service entrance provides some protection against externally-induced transient surges; however, there will always be some amount of surge let-through at the service entrance. For this reason, install surge protectors on downstream distribution panels to provide additional protection against surges. The locations marked with the symbol  are typical surge protector locations. The surge protectors downstream of the service entrance also limit internally-induced surges as well as any let-through from the service entrance.

Figure 1 Simplified Facility Layout

Critical loads downstream of the distribution panels should have an additional level of surge protection as shown above. Switching loads such as MCCs should have surge protection to limit the transmission of switching transients to the rest of the facility. It is not necessary to install a surge protector on every panelboard in the facility; the selection of which panelboards should have surge protection depends on the importance of the loads served by each panelboard. HVAC equipment usually contain electronic controls that are sensitive to surges. Lighting electronic ballasts often are equipped with internal surge protection; however, once installed, there is often no easy method of confirming that the internal protection is either present or functional.

By the arrangement shown in Figure 1, protection is provided within the facility for both internally and externally induced transient surges. Proper operation of this cascaded design requires that the installation criteria specified in paragraph 3 are met. For example, excessive lead length on a surge protector could mean that it would never respond to a surge event; the other surge protectors would respond first.

PERFORMANCE EVALUATION CRITERIA.

The most important surge protector performance evaluation criteria are:

- Listing in accordance with UL 1449, *Standard for Transient Voltage Surge Suppressors, Second Edition*.
- UL 1449 surge suppression rating.
- Maximum continuous overvoltage rating.

- Maximum surge current rating.
- Repeated surge current withstand capability.
- Modes of protection.
- Internal fusing characteristics.
- Installation capability.
- Warranty.
- Price.

UL 1449 Listing.

UL 1449 listing is a fundamental requirement for all procured surge protectors for use in electrical distribution systems.

The UL 1449 listing process primarily ensures that the surge protector has passed a variety of safety tests. In particular, the UL 1449 fail-safe requirements are intended to address metal oxide varistor (MOV) degradation modes in which an MOV at end of life can conduct continuously, causing overheating. The surge suppression tests listed in UL 1449 are not necessarily representative of actual surges that might be encountered, but UL 1449 listing ensures the surge protector has passed some basic level of qualification. Figure 2 shows a typical listed surge protector properly installed adjacent to a panelboard.

Figure 2 UL 1449 Listed Surge Protector

Surge protectors are available on the market that have not been listed to UL 1449. In these cases, the user does not know if the manufacturer's claims can be accepted because there has not been an independent evaluation process. Use of unlisted surge protectors is also a violation of NEC Articles 280.4(A) and 285.5 (2005 Edition). Figure 3 shows an example of an unlisted surge protector. As can be seen, this surge protector consists of two conductors in an insulator with silica sand around the conductors; this is only a simple spark gap.

Figure 3 Unlisted Surge Protector

To summarize, ensure surge protectors have a UL 1449 listing; this is a fundamental design requirement. The UL 1449 listing process does not alone confirm that all other specified capabilities in the manufacturer's literature have been met. Additional evaluation is necessary for these other features as described in subsequent sections.

UL 1449 Surge Suppression Rating.

The lowest possible UL 1449 surge suppression rating is 330 volts and the highest possible rating is 6,000 volts. Lower voltage let-through ratings provide better surge protection. A 6,000 volt rating could mean that the surge protector will still allow a 6,000 volt surge to be transmitted to downstream equipment, with little or no attenuation.

Table 1 lists the maximum recommended surge suppression ratings; lower ratings are preferred. Considering how the UL 1449 listing process determines these ratings, a good quality surge protector should have no difficulty meeting these limits.

Table 1 Maximum Allowed UL 1449 Surge Suppression Ratings

AC Power System Voltage	Line-to Neutral Maximum Suppression Rating
Single-Phase 120	600
120/240	600
Three Phase Wye 208Y/120	700
480Y/277	1,200

Maximum Continuous Overvoltage Rating.

The maximum continuous overvoltage rating (MCOV) is the rated continuous voltage that can be applied to the MOV elements without having the surge protector start to operate. If the normal system voltage exceeds the MCOV, the surge protector will conduct continuously and eventually fail. Everything else equal, a higher MCOV is desirable; a lower MCOV rating increases the surge protector’s susceptibility to a temporary overvoltage such as a momentary voltage swell.

Table 2 lists the preferred minimum MCOV rating for surge protectors. Lower MCOV ratings can be used provided that the manufacturer provides documentation of the surge protector performance during voltage swell events. Temporary overvoltages cause a large proportion of the total surge protector failures.

Table 2 Minimum Recommended MCOV Ratings

AC Power System Voltage	Minimum MCOV Rating
Single-Phase 120	150
120/240	300/150
Three Phase Wye 208Y/120	300/150
480Y/277	600/320

Surge Current Rating.

The surge current rating provides a relative measure of the surge protector’s ability to withstand surge currents and is an indicator of the peak surge current that the device subassemblies and modules are designed to handle on a one-shot basis without failure. The surge current rating is usually based upon the total summation (or near-total) of internal subassembly or individual MOV ratings on each phase or protection mode.

For large surge current ratings (over 200,000 amperes), it is unlikely that the entire surge protector was actually tested to such a high level. Test laboratories are capable of generating an IEEE C62.41 8x20 µsec impulse up to about the 200,000 ampere level. Surge protectors with surge current ratings in the hundreds of thousands of amperes have most likely not been tested to this level.

For MOV-based designs, the surge current rating provides a relative measure of the amount of MOV surface area that is available for surge protection. As MOVs are subjected to surge voltages, the MOV grain boundaries degrade with time. By including additional MOVs to obtain a higher surge current rating, the surge protector effectively provides an operating and aging margin. In other words, a higher surge current rating can provide a longer operating life. Surge protectors that are rated for hundreds of thousands of amperes of surge current do not actually expect to experience such a high current level. Instead, the higher rating provides assurance that the surge protector can withstand a number of smaller surges, each of which damages MOV grain boundaries by some amount, without experiencing complete failure of the surge protector. By this approach, the surge protector should have a longer life.

Table 3 provides the minimum allowed surge current ratings per phase or per mode of protection. The surge current ratings have been selected based on ensuring an adequate margin for higher-than-expected surges due to nearby lightning strikes. Higher surge current ratings can be selected provided there is not a significant cost difference.

Table 3 Minimum Allowed Surge Current Rating

AC Power System Location	Minimum Surge Current Rating Per Phase or Per Mode of Protection
Service Entrance	200,000 amperes
Sub-Panels	100,000 amperes
Critical Loads	100,000 amperes

The surge current ratings specified in Table 3 apply regardless of whether the facility is located in a high, medium, or low exposure area (as defined by IEEE C62.41). The selected minimum surge current values are based on the following rationale:

- The values are high enough to ensure protection in high exposure areas.
- The values are not so high that lower exposure areas are over-protected.
- This approach does not force each designer to decide if a given facility is located in a high, medium, or low exposure environment.

Repeated Surge Current Withstand Capability.

The specified surge current ratings are intended to provide an adequate allowance for repeated surges over the life of the surge protector. In addition to the specified surge current ratings, verify that the manufacturer has tested representative surge protectors to the IEEE C62.41 levels.

Modes of Protection.

UL 1449, Table 34.2, provides the various test configurations to provide different modes of protection. The total possible modes of protection depend on the system design and voltage level, as shown below in Table 4.

Table 4 UL 1449 Modes of Protection

Single phase (2-wire + ground)	Single phase (3-wire + ground)	Three phase (4-wire + ground)
L ₁ – N	L ₁ – N	L ₁ – N
L ₁ – G	L ₂ – N	L ₂ – N
N – G	L ₁ – G	L ₃ – N
	L ₂ – G	L ₁ – G
	L ₁ – L ₂	L ₂ – G
	N – G	L ₃ – G
		L ₁ – L ₂
		L ₁ – L ₃
		L ₂ – L ₃
		N – G

Wye Connections.

For single phase and three phase wye connected systems, the following modes of protection are recommended:

- Each phase to neutral (L – N).
- Neutral to ground (N – G).

Phase to ground (L – G) protection will be important if the grounding system is of poor quality or in other countries where neutral and ground are not connected. By protecting both the neutral and ground paths, any differences in potential between the two points will still be protected against surge events.

Phase to phase (L – L) protection is not needed for wye-connected systems provided that the other modes of protection are provided.

Delta Connections.

Provide the following modes of protection:

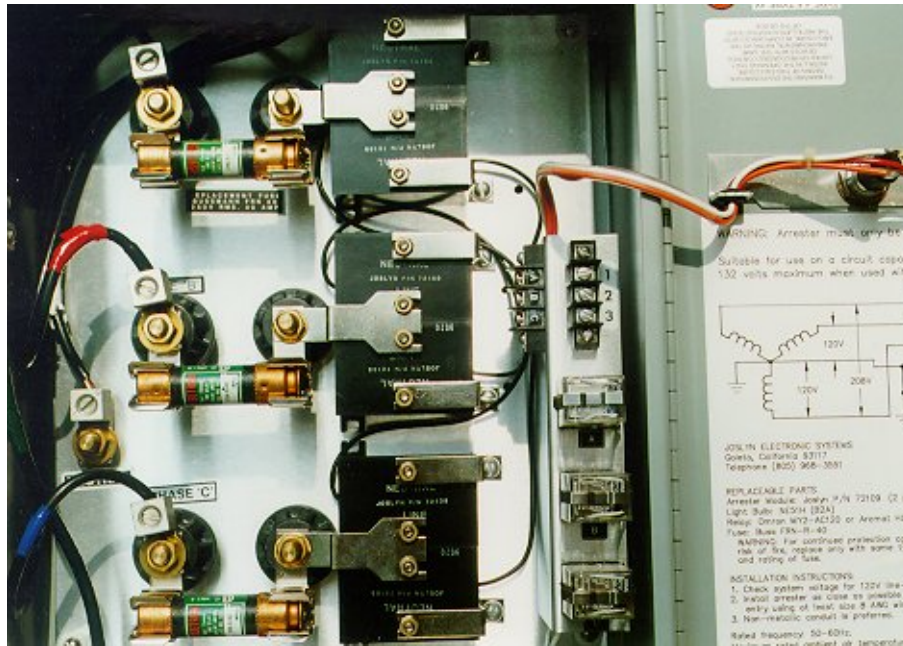
- Phase to phase (L – L).
- Phase to ground (L – G).

Internal Fusing.

UL 1449 listing provides assurance that the surge protector can be applied safely. Some older surge protector designs could overheat and catch fire after an MOV degrades to the point that it continuously conducts current. Newer designs often individually fuse each MOV. In addition, a fuse might be installed

for each separate mode of protection. Figure 4 shows an example of fusing for each module. If the selected surge protector has this type of fuse arrangement, verify with the manufacturer the overcurrent characteristics of the fuse when exposed to transient surge currents.

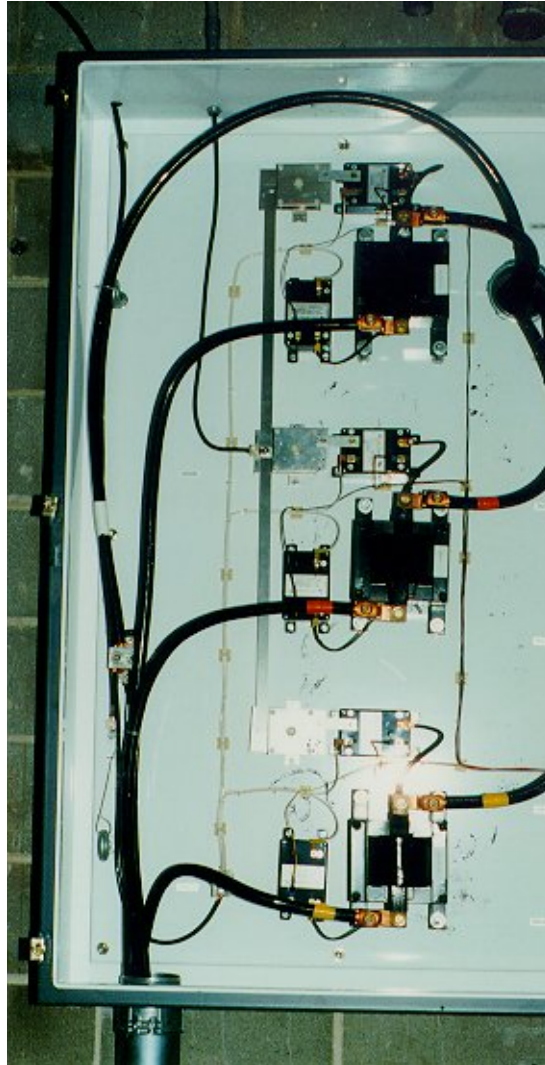
Figure 4 Example of Internally Fused Surge Protector



Installation Capability.

Surge protectors covered by this UFC should normally be of the parallel type. The surge protector size and installation method are important evaluation considerations. If the surge protector enclosure is over-sized, it might not fit near the required location, thereby causing the lead length of the connecting conductors to be excessive, which increases the let-through voltage.

Figure 5 shows an example of an unacceptable design; this example has two problems. First, the enclosure size ensures that the connection leads will be long, which increases the let-through voltage. Second, the large enclosure might not fit where it should be installed—near the equipment to be protected—which again ensures excessive lead length.

Figure 5 Excessive Lead Length Caused by Over-Sized Enclosure**Warranty.**

A minimum 5 year full-replacement warranty is required. Longer warranty intervals are desirable.

Price.

The previous criteria attempt to provide an adequate minimum level of surge protector performance. Given this approach, the low bid can be used provided that the selected supplier confirms the required performance attributes listed previously.

PERFORMANCE SPECIFICATIONS THAT ARE NOT IMPORTANT.

The previous section listed the important surge protection attributes. This section discusses performance attributes that either are less important or are possibly misunderstood because of inconsistent terminology in the industry.

Clamping Voltage.

Disregard references to clamping voltage unless it can be confirmed that the meaning is equivalent to let-through voltage as defined in this UFC. Depending on its use, the clamping voltage can be the voltage at which the surge protector *starts* to operate. In this case, the clamping voltage does not provide adequate information regarding the actual let-through voltage. Manufacturers that provide only a clamping voltage might be disguising poor let-through voltages. UL 1449 listing establishes a standardized suppression voltage rating that can be used for evaluation purposes. Compare the UL 1449 suppression voltage rating to the stated clamping voltage to identify any significant differences. If necessary, request the manufacturer to provide a copy of the UL listing test file to assure that clamping voltage is not inappropriately stated.

Response Time.

Manufacturers advertise response time but the meaning is not always clear. Response time is not important; let-through voltage is important. If the surge protector response time is slow, the let-through voltage will be high.

Joules Rating.

The joules rating (sometimes referred to as surge energy capability) is not an important performance attribute and is frequently misunderstood. If the surge protector is listed to UL 1449 and has demonstrated acceptable operational cycling, the surge protector will have an acceptable energy dissipation capability.

Sine Wave Tracking.

The suppression of the surge voltage throughout the sine wave has been referred to as sine wave tracking and it can provide an added level of protection for sensitive loads. The term sine wave tracking is not used in industry standards, it is not confirmed as an attribute by UL 1449, and its meaning does not appear to have an industry-accepted definition. Sine wave tracking is not considered a design requirement for surge protectors. Manufacturers that market sine wave tracking as a design feature are claiming that the surge protector will provide a certain level of suppression throughout the sine wave. This suppression is usually achieved by installing capacitors. If sine wave tracking is a feature desired by the user, ensure that the manufacturer provides certified test data that demonstrates this capability. The test data should include surge applications at different points on the sine wave.

INSTALLATION CRITERIA.

Minimizing Lead Length for Parallel Surge Protectors.

Lead length refers to the length of conductor between the circuit connection and the surge protector, and is the critical installation attribute for parallel-type surge protectors. For typical installations, the lead conductor has negligible resistance, but a significant inductance when subjected to a high frequency surge transient. This inductance can develop a substantial voltage drop under surge conditions, thereby proportionately increasing the let-through voltage. Refer to Appendix B for an example calculation of the lead length effect.

Some lead length might be unavoidable in an installation; however, make every effort to minimize the lead length and associated inductance. Figures 6 and 7 show examples of optimal installations in which the lead conductors are less than 1 foot in length. Notice that the leads have been connected to the circuit breaker panel without making any high-inductance coils or sharp bends in the conductors.

Figure 6 Optimal Installation of Surge Protector Leads – First Example

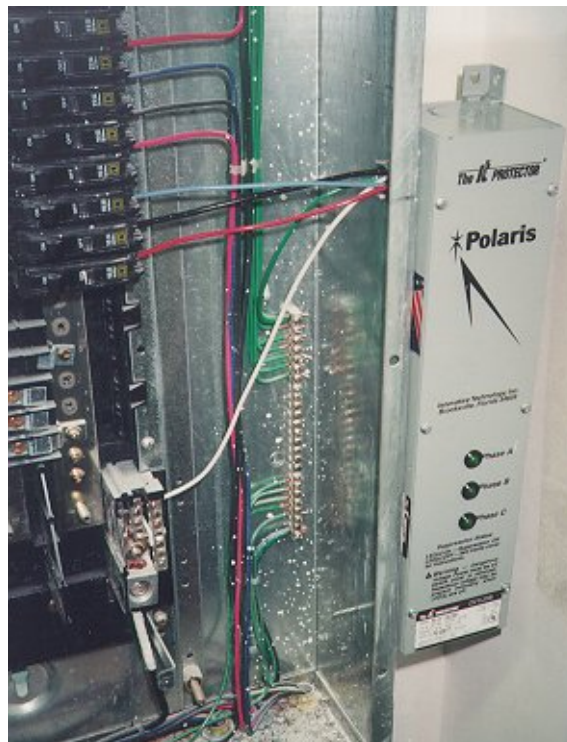
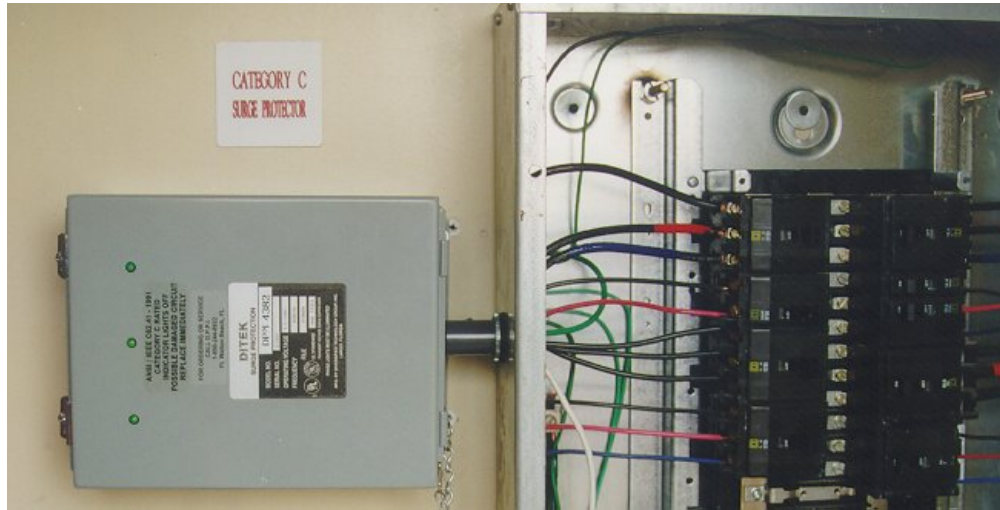


Figure 7 Optimal Installation of Surge Protector Leads – Second Example

The installation instructions provided by some manufacturers specify that the surge protector should be installed within 3 meters (10 feet) of the circuit connection point. This long of a lead length is unacceptable because the allowed let-through voltage would be too large to protect the downstream equipment. This effect applies to all parallel surge protectors, regardless of rating and quality. Figure 8 shows an example of a surge protector that is located on the other side of a room from the load center; in this case, the surge protector provides no meaningful protection against surges. Figure 9 shows another poor installation in which a safety switch is installed between the surge protector and the breaker panel. Although the safety switch application is well-intended, its use adds several feet of cable between the surge protector and the breaker panel. In summary, the best surge protector will be rendered useless by installing long leads between it and the circuit connection point.

Figure 8 Unacceptable Installation with Long Surge Protector Leads



Figure 9 Less-Than-Optimal Installation by Including Safety Switch



Breaker Connection.

Whenever possible, connect parallel-type surge protectors to a spare breaker in the associated breaker panel. In addition to providing a close electrical connection that minimizes lead length, the breaker provides traditional overcurrent protection for faults between the breaker and the surge protector. Also, the breaker provides a convenient means of deenergizing the circuit to work on or replace a surge protector.

Verify with the manufacturer the minimum required breaker size to ensure proper surge protector performance. This is important because breaker instantaneous trip units also respond to surge currents. Testing by one manufacturer determined that a 60 ampere breaker can usually withstand a 65,000 ampere 8/20 surge. A 30-ampere rated breaker tended to trip above a 25,000 ampere surge. Based on the above results, lower-rated breakers can be expected to trip at lower current levels. For sub-panels, a 30-ampere minimum breaker should be used to minimize the likelihood of breaker tripping during a surge event. This is important because breaker tripping removes the surge protector from the circuit, thereby disabling surge protection for subsequent surges.

Some surge protectors have been listed based on the connection to an upstream breaker. Review the manufacturer's installation instructions to determine if special electrical connection requirements apply.

If a spare breaker is not available, it is acceptable to connect to the load side of an existing used breaker. Parallel surge protectors are passive devices that draw a negligible current during operation.

In-line type parallel surge protectors might not require an upstream breaker connection. An in-line type parallel surge protector must have a short circuit current rating higher than the available short circuit current for the installation location.