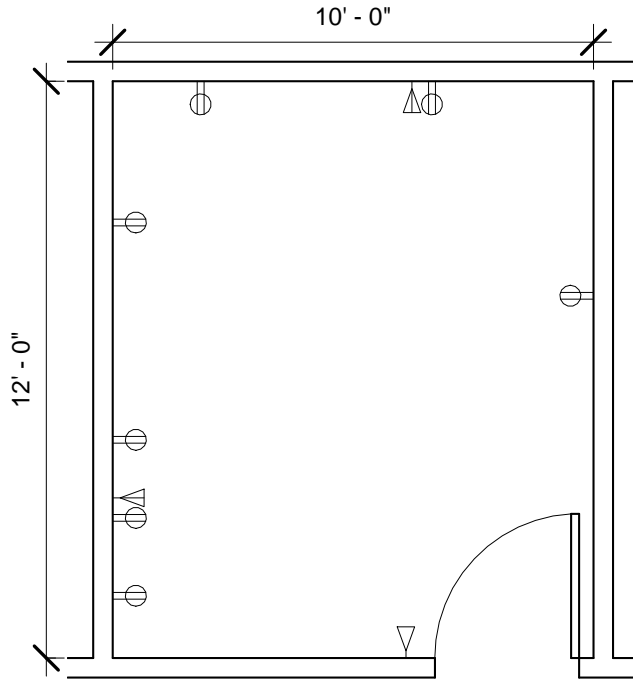
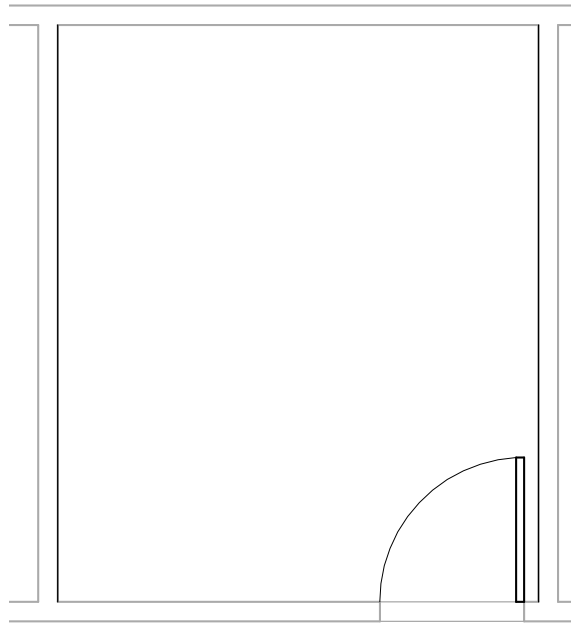


Room Description: XRAY Viewing/Consultation Area (XVC01)	NSF: 120	XVC01	
Sheet Description: Room/Equipment Isometric	Scale:	Sheet 1	of 5

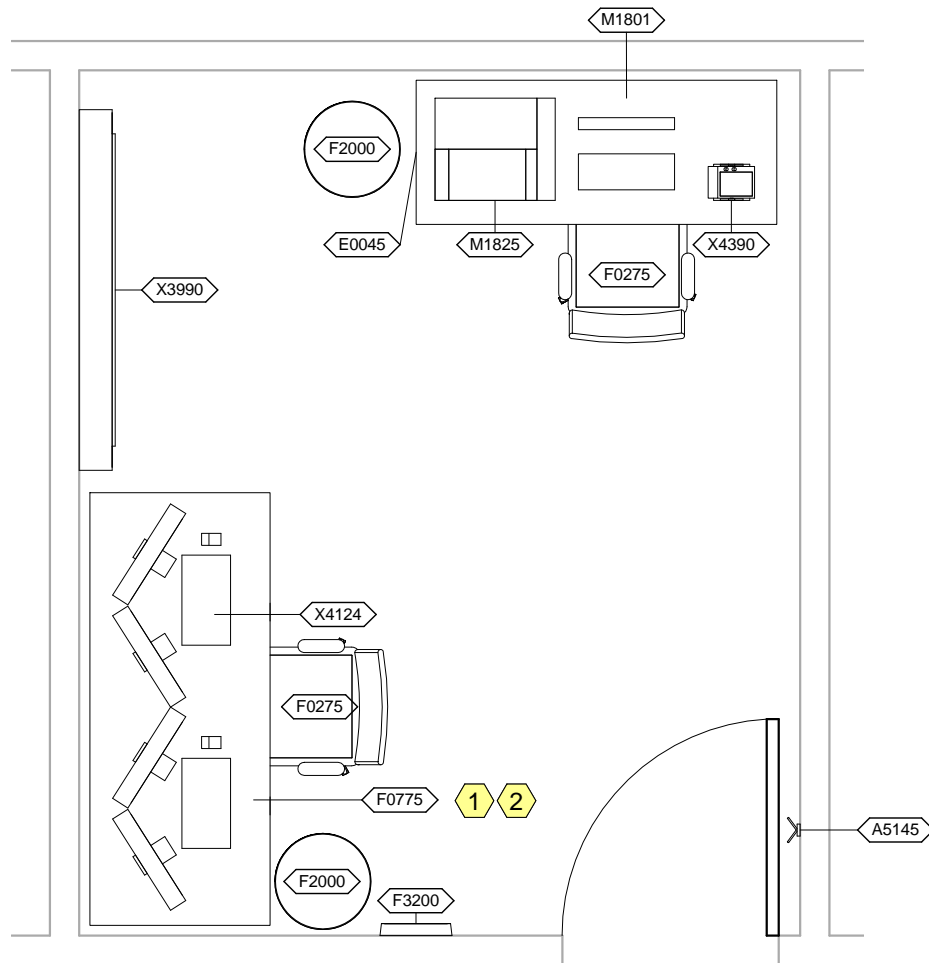


XVC01 - FLOOR PLAN



XVC01 - CEILING MOUNTED EQUIPMENT PLAN

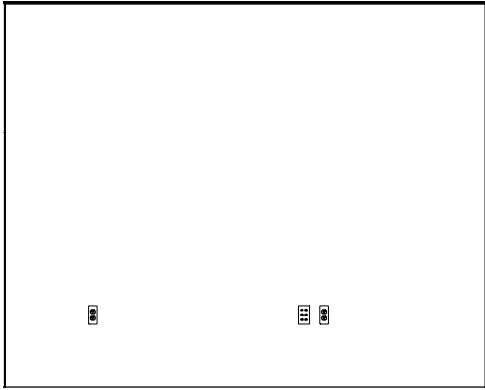
Room Description: XRAY Viewing/Consultation Area (XVC01)	NSF: 120	XVC01	
Sheet Description: Floor & Ceiling Mounted Equipment Plans	Scale: 1/4" = 1'-0"	Sheet 2	of 5



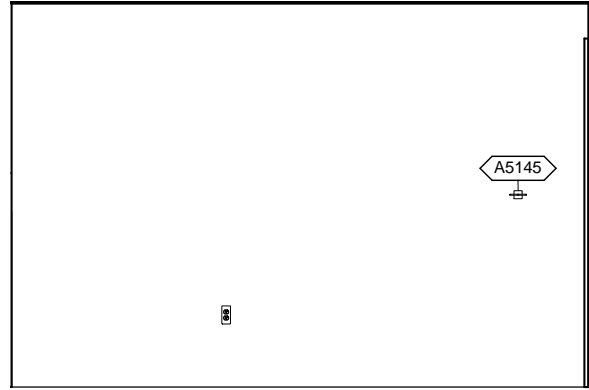
XVC01 - NOTES

- 1 For GME or main Radiology, consider more ergonomic viewing station.
- 2 If viewing is to included mammography, use 5 megapixel monitors

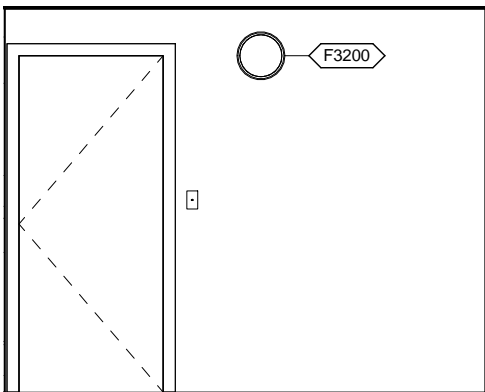
Room Description: XRAY Viewing/Consultation Area (XVC01)	NSF: 120	<h1 style="margin: 0;">XVC01</h1>	
Sheet Description: Equipment Plan	Scale: 3/8" = 1'-0"	Sheet <h2 style="margin: 0;">3</h2>	of <h2 style="margin: 0;">5</h2>



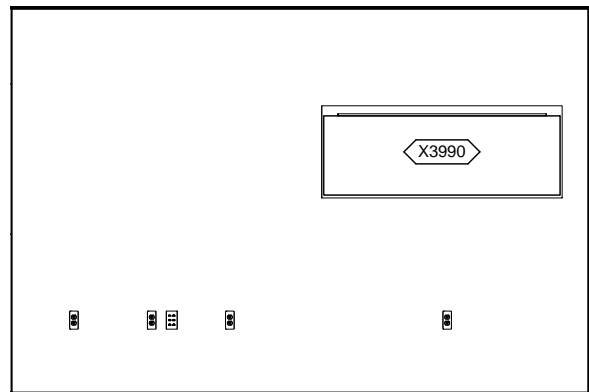
XVC01 - NORTH ELEVATION



XVC01 - EAST ELEVATION



XVC01 - SOUTH ELEVATION



XVC01 - WEST ELEVATION

Room Description: XRAY Viewing/Consultation Area (XVC01)	NSF: 120	XVC01	
Sheet Description: Interior Room Elevations	Scale: 1/4" = 1'-0"	Sheet 4	of 5

XVC01 - EQUIPMENT SCHEDULE

JSN	Nomenclature	Qty	LF	AR	Logistics				Utilities					
					NA	AF	VA	1	2	3	4	5	6	
A5145	Hook, Garment, Double, SS, Surface Mounted	1		A	A	A	A	-	-	-	-	-	-	-
E0045	Workcenter, Computer, Free Standing, 60" W	1		C	C	C	C	-	-	-	-	-	-	-
F0275	Chair, Swivel, High Back	2		C	C	C	C	-	-	-	-	-	-	-
F0775	Table, Work, 2 Drawer	1		C	C	C	C	-	-	-	-	-	-	-
F2000	Basket, Wastepaper, Round, Metal	2		C	C	C	C	-	-	-	-	-	-	-
F3200	Clock, Battery, 12" Diameter	1		C	C	C	C	-	-	-	-	-	-	-
M1801	Computer, Microprocessing, w/Flat Panel Monitor	1		C	C	C	C	-	A	-	-	-	-	-
M1825	Printer, Computer	1		C	C	C	C	-	A	-	-	-	-	-
X3990	Illuminator, Film, 4 Panels, Wall Mounted	1		C	C	C	C	-	A	-	-	-	-	-
X4124	Console, PACS, Remote View, 2k X 2k, 4 Monitors	1		F	F	F	F	-	A	-	-	-	-	-
X4390	Viewer, Spot, High Intensity	1		C	C	C	C	-	A	-	-	-	-	-

XVC01 - DATA/TELEPHONE EQUIPMENT

JSN	Nomenclature	Qty	Logistics			
			AR	NA	AF	VA
A1010	Telecommunication Outlet	2	A	A	A	A
A1014	Telephone, Wall Mounted, 1 Line, with Speaker	1	A	A	A	A

Room Description: XRAY Viewing/Consultation Area (XVC01)	NSF: 120	XVC01	
Sheet Description: Equipment Schedule	Scale:	Sheet 5	of 5