

PEHS1 - INTERIOR DESIGN

Floor Finish		Wall Finish		Ceiling Finish		Room Height	Room Noise		
Preferred	Alternate	Preferred	Alternate	Preferred	Alternate	ft - in	Min NC	Max NC	SC
CP	VT	GAF	GPT	AT1	-	9' - 0"	30	35	45

PEHS1 - DOOR SCHEDULE

Mark	Type	Count	Height	Width	Notes
			ft - in	ft - in	
A	Single-Flush	1	7' - 0"	3' - 0"	

Room Description: Hearing/Screening Booth, 1 Person

NSF: 120

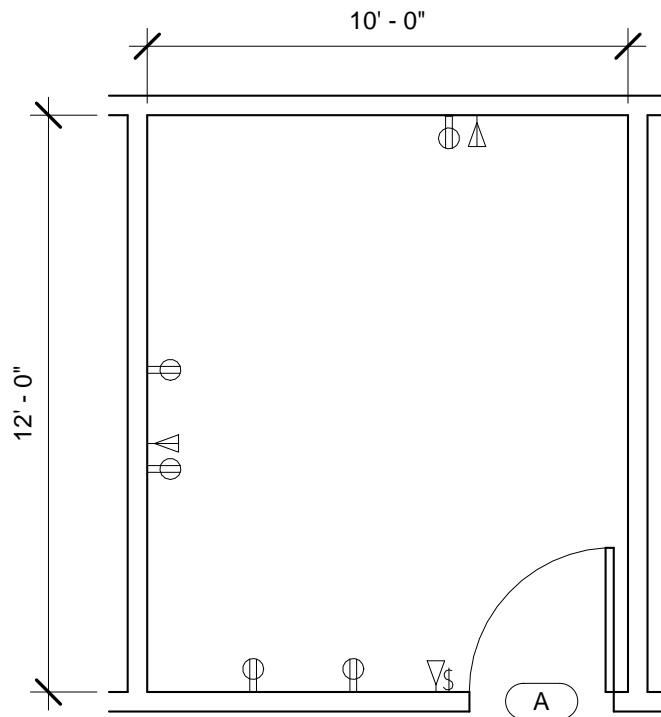
PEHS1

Plate Description: Room/Equipment Isometric

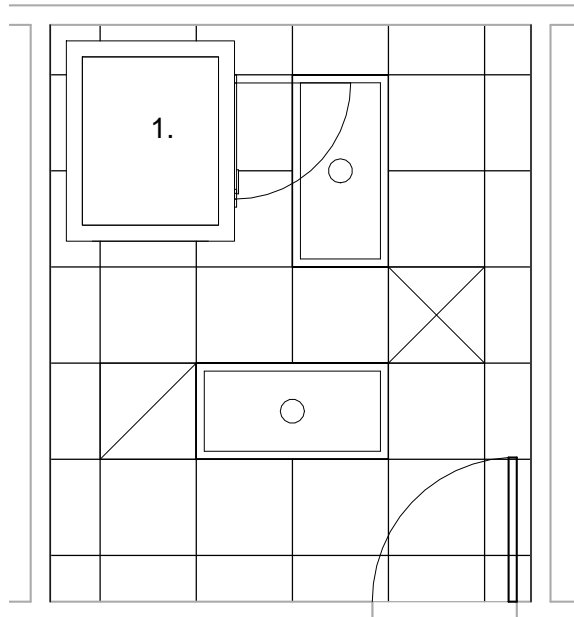
Scale:

Sheet
1

of
5



PEHS1 - FLOOR PLAN

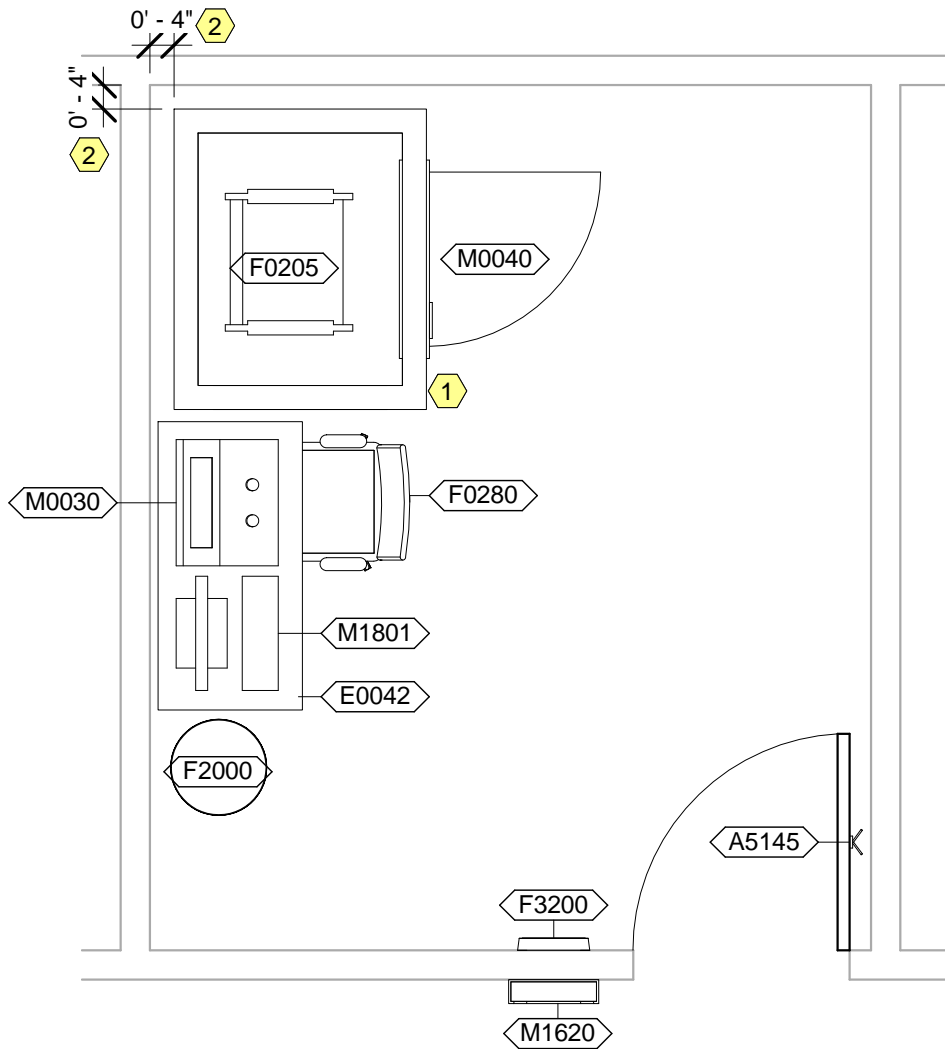


PEHS1 - CEILING PLAN

NOTES:

1. Room will require a junction box (20 amp 110V) in the ceiling for audio booth hookups.

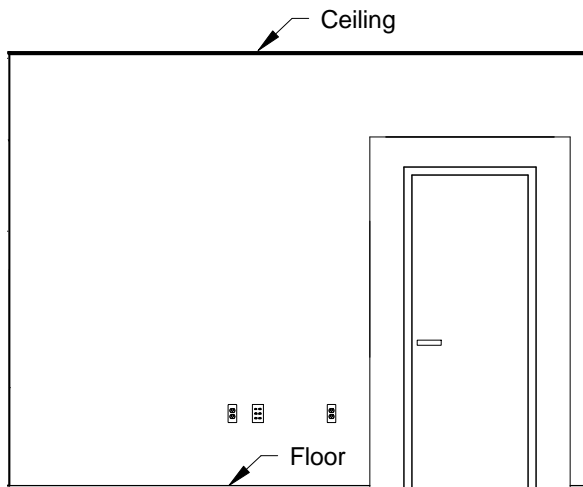
Room Description: Hearing/Screening Booth, 1 Person	NSF: 120	PEHS1	
Plate Description: Floor & Ceiling Plans	Scale: 1/4" = 1'-0"	Sheet 2	of 5



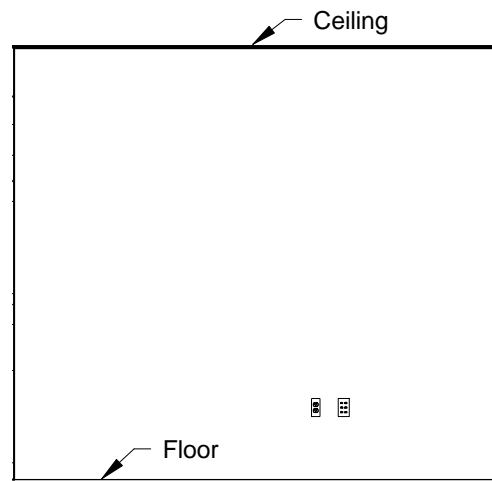
PEHS1 - NOTES

- 1 Slab shall be recessed at the audio booth location in order to comply with ABA. Provide ABA compliant approach to testing booth where slab cannot be recessed.
- 2 Coordinate with manufacturer's venting and ceiling requirements for the M0040, Audio Booth.

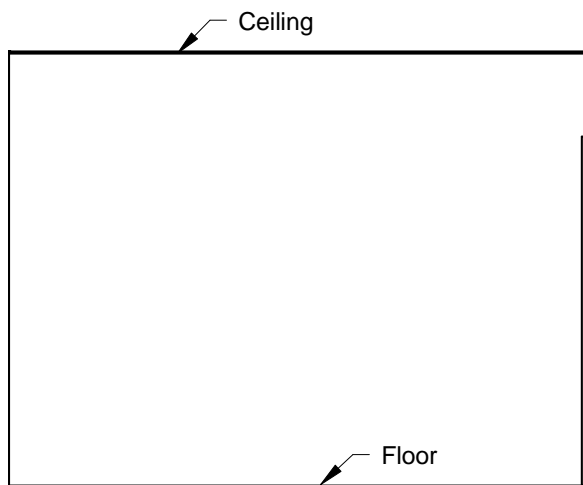
Room Description: Hearing/Screening Booth, 1 Person	NSF: 120	PEHS1	
Plate Description: Equipment Plan	Scale: 3/8" = 1'-0"	Sheet 3	of 5



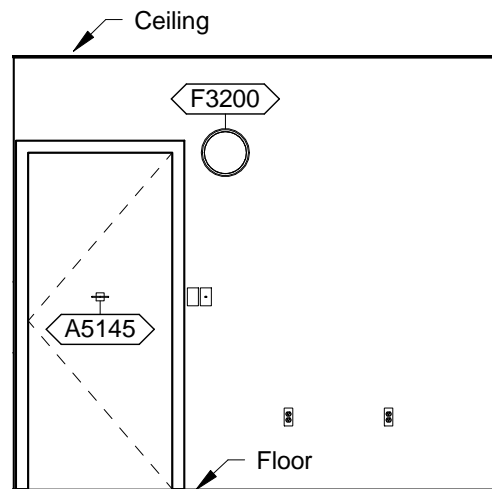
PEHS1 - PLAN WEST



PEHS1 - PLAN NORTH



PEHS1 - PLAN EAST



PEHS1 - PLAN SOUTH

<p>Room Description: Hearing/Screening Booth, 1 Person</p>	<p>NSF: 120</p>	<p>PEHS1</p>	
<p>Plate Description: Interior Room Elevations</p>	<p>Scale: 1/4" = 1'-0"</p>	<p>Sheet 4</p>	<p>of 5</p>

PEHS1 - EQUIPMENT SCHEDULE

JSN	Nomenclature	Qty	Logistics				Utilities					
			AR	NA	AF	VA	1	2	3	4	5	6
A5145	Hook, Garment, Double, SS, Surface Mounted	1	A	A	A	A	-	-	-	-	-	-
E0042	Workcenter, Computer, Free Standing, 48" W	1	C	C	C	C	-	-	-	-	-	-
F0205	Chair, Side With Arms	1	C	C	C	C	-	-	-	-	-	-
F0280	Chair, Swivel, Low Back	1	C	C	C	C	-	-	-	-	-	-
F2000	Basket, Wastepaper, Round, Metal	1	C	C	C	C	-	-	-	-	-	-
F3200	Clock, Battery, 12" Diameter	1	C	C	C	C	-	-	-	-	-	-
M0030	Audiometer, Diagnostic	1	C	C	C	C	-	A	-	-	-	-
M0040	Booth, Audio, Single Wall, 1 Person	1	A	A	A	A	-	F	-	-	-	F
M1620	Holder, Chart, Patient, Wall or Door Mounted	1	A	A	A	A	-	-	-	-	-	-
M1801	Computer, Microprocessing, w/Flat Panel Monitor	1	C	C	C	C	-	A	-	-	-	-

PEHS1 - DATA/TELEPHONE EQUIPMENT

JSN	Nomenclature	Qty	Logistics			
			AR	NV	AF	VA
A1010	Telecommunication Outlet	2	A	A	A	A
A1014	Telephone, Wall Mounted, 1 Line, with Speaker	1	A	A	A	A

Room Description: Hearing/Screening Booth, 1 Person	NSF: 120	PEHS1	
Plate Description: Equipment Schedule	Scale:	Sheet 5	of 5