

OUTPATIENT, RESP THERAPY

KEY NOTES

1. COORDINATE LOCATION OF M1620, PATIENT CHART HOLDER, AND ROOM SIGNAGE.
2. MOUNT A5145, HOOK, AT 1372 [4'-6"] AFF.
3. MOUNT A5145, HOOK, AT 1372 [4'-6"] AFF. PROVIDE 2-A5145'S FOR NAVY PROJECTS ONLY. MOUNT 1-A5145 AT 1372 [4'-6"] AFF AND 1-A5145 AT 1524 [5'-0"] AFF.
4. LENGTH OF E1500, WALL MOUNTED RAIL, TO BE DETERMINED BY MANUFACTURER/INSTALLER.
5. WING WALLS MAY BE USED INSTEAD OF A5180, CURTAIN, TO PROVIDE SEPARATION BETWEEN CUBICLES.
6. ROOM SIZE MAY VARY ACCORDING TO NUMBER OF CUBICLES NEEDED.
7. COORDINATE LOCATIONS OF ELECTRICAL AND DATA OUTLETS WITH M1802, WALL MOUNTED, FOLD DOWN COMPUTER.
8. P3200, ELECTRONIC LAVATORY, MAY BE USED INSTEAD OF P3100, LAVATORY. FOR THE P3200 PROVIDE EITHER BATTERY POWER OR HARD WIRED CONNECTION.

OUTPATIENT, RESPIRATION THERAPY (OPRT1)

CARDIOLOGY/PULMONARY SERVICES

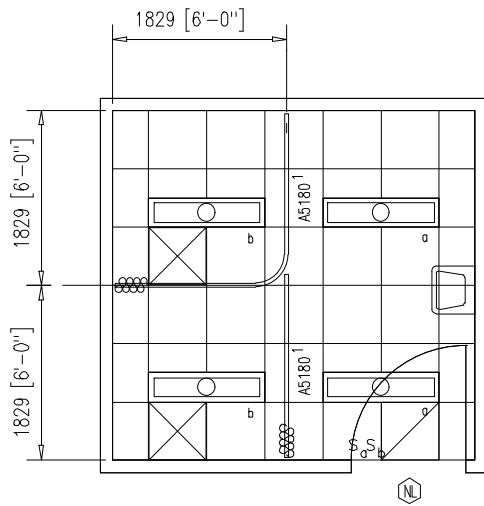
FLOOR/EQUIPMENT PLAN 13.94 NSM (150 NSF)

DATE: 01/28/2002

0 1000 2000



1:50 SCALE (MILLIMETERS)



KEY NOTES

1. WING WALLS MAY BE USED INSTEAD OF A5180, CURTAIN, TO PROVIDE SEPARATION BETWEEN CUBICLES.

OUTPATIENT, RESPIRATION THERAPY (OPRT1)

CARDIOLOGY/PULMONARY SERVICES

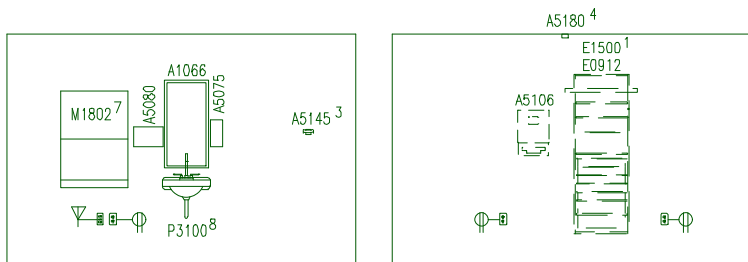
CEILING PLAN

DATE: 01/28/2002

13.94 NSM (150 NSF)

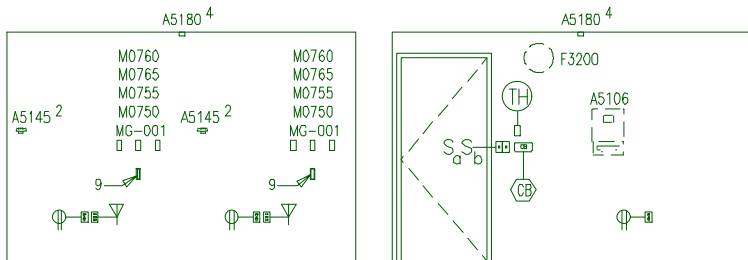


1:50 SCALE (MILLIMETERS)



EAST

NORTH



WEST

SOUTH

NOTES

1. SEE TYPICAL EQUIPMENT MOUNTING HEIGHTS BEGINNING ON SHEET 7.01.01.

KEY NOTES

1. LENGTH OF E1500, WALL MOUNTED RAIL, TO BE DETERMINED BY MANUFACTURER/INSTALLER.
2. MOUNT A5145, HOOK, AT 1372 [4'-6"] AFF.
3. MOUNT A5145, HOOK, AT 1372 [4'-6"] AFF. PROVIDE 2-A5145'S FOR NAVY PROJECTS ONLY. MOUNT 1-A5145 AT 1372 [4'-6"] AFF AND 1-A5145 AT 1524 [5'-0"] AFF.
4. WING WALLS MAY BE USED INSTEAD OF A5180, CURTAIN, TO PROVIDE SEPARATION BETWEEN CUBICLES.
7. COORDINATE LOCATIONS OF ELECTRICAL AND DATA OUTLETS WITH M1802, WALL MOUNTED, FOLD DOWN COMPUTER.
8. P3200, ELECTRONIC LAVATORY, MAY BE USED INSTEAD OF P3100, LAVATORY. FOR THE P3200 PROVIDE EITHER BATTERY POWER OR HARD WIRED CONNECTION.
9. VACUUM SLIDE.

General Notes:

1. For typical equipment mounting heights see "TYPICAL EQUIPMENT MOUNTING HEIGHTS" drawing.
2. MIL-STD-1691 data can only be accessed from the Equipment Plan.

OUTPATIENT, RESPIRATION THERAPY (OPRT1)

CARDIOLOGY/PULMONARY SERVICES

ELEVATIONS

13.94 NSM (150 NSF)

DATE: 01/28/2002

0 1000 2000



1:50 SCALE (MILLIMETERS)

Project Rooms (User Contents Only)

As of 08/18/2005

Page 1

Room Code: OPRT1 Room Qty: 1 Room Area: 150.01 Room Description: OUTPATIENT, RESP THERAPY

JSN	NOMENCLATURE	Qty	UNIT	LOG	Ut1	Ut1	Ut1	Ut1	Ut1	Ut1
			ISSUE	CAT	1	2	3	4	5	6

Equipment per Room:

A1066	Mirror, Float Glass, With SS Frame, 36X18	1	EA	A
A5075	Dispenser, Soap, Disposable	1	EA	C
A5080	Dispenser, Paper Towel, SS, Surface Mounted	1	EA	A
A5106	Waste Disposal Unit, Sharps w/Glove Dispenser	2	EA	C
A5145	Hook, Garment, Double, SS, Surface Mounted	3	EA	A
A5180	Track, Cubicle, Surface Mounted, With Curtain	2	FT	A
E0912	Locker, Supply, Med Surg, Wall Mtd	1	EA	C
E0948	Cart, General Storage, Mobile, 42"H x 32"W x 22"	2	EA	C
E1500	Rail, MOD, W/MNTD, HX144XD	1	EA	C
F0205	Chair, Side With Arms	2	EA	C
F0280	Chair, Swivel, Low Back	1	EA	C
F0340	Stool, Self Adjusting	1	EA	C
F2000	Basket, Wastepaper, Round, Metal, 18 H x 16 Dia.	1	EA	C
F3200	Clock, Battery, 12" Diameter	1	EA	C
M0750	Flowmeter, Air, Connect w/50 PSI Supply	2	EA	C	.	.	K	.	.	.
M0755	Flowmeter, Oxygen, Low Flow	2	EA	C	.	.	A	.	.	.
M0760	Proportioner (Blender), Oxygen/Air	2	EA	C	.	.	F	.	.	.
M0765	Regulator, Vacuum	2	EA	C	.	.	B	.	.	.
M0875	Nebulizer, Ultrasonic	2	EA	C	.	A	F	.	.	.
M1620	Holder, Chart, Patient, Wall or Door Mounted	1	EA	A
M1802	Work Station, Computer, Retractable, Wall Mount	1	EA	C	.	G	.	.	.	D
M3072	Frame, Infectious Waste Bag w/Lid	2	EA	C
M4116	Monitor, Vital Signs	1	EA	C	.	A
M7905	Oximeter, Pulse	2	EA	C	.	A
P3100	Lavatory, Vitreous China, Slab Type	1	EA	A	D

=====

GRAND TOTAL

38