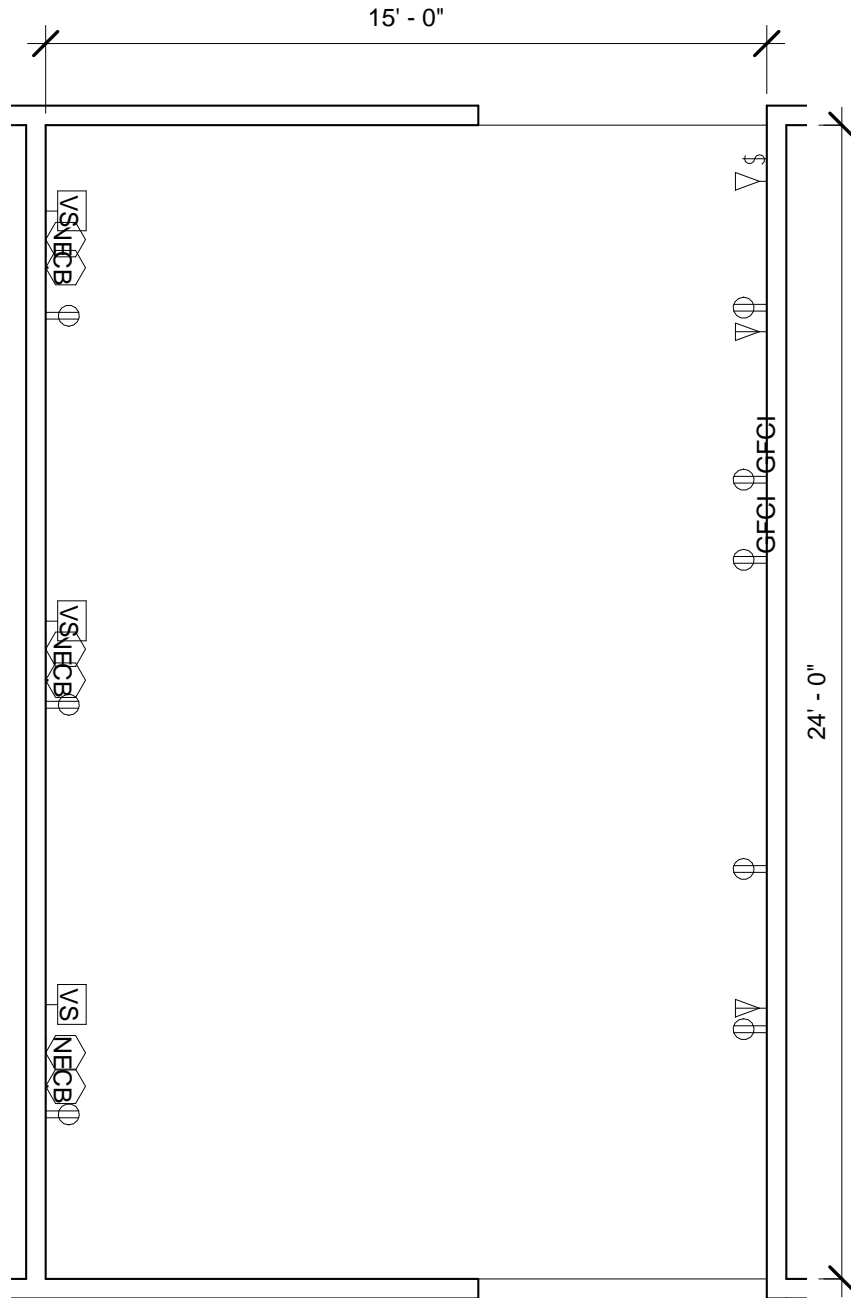


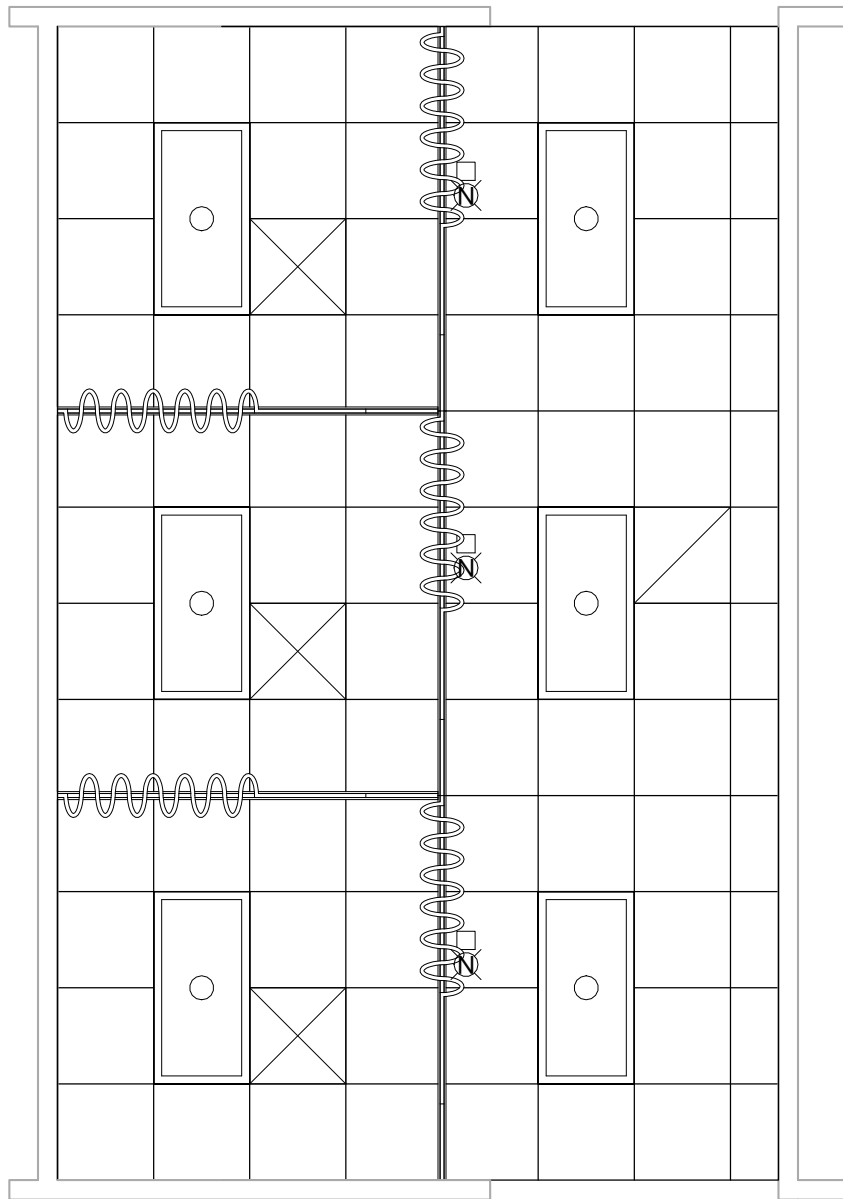
LBVP2 - INTERIOR DESIGN									
Floor Finish		Wall Finish		Ceiling Finish		Room Height	Room Noise		
Preferred	Alternate	Preferred	Alternate	Preferred	Alternate	ft - in	Min NC	Max NC	SC
SV	VT	GLG	GPT	AT1	-	9' - 0"	30	35	40

<b>Room Description:</b> Laboratory, Venipuncture, Multi-Chair	<b>NSF:</b> 360	<h1>LBVP2</h1>	
		Sheet <b>1</b>	of <b>6</b>
<b>Plate Description:</b> Room/Equipment Isometric	<b>Scale:</b>		



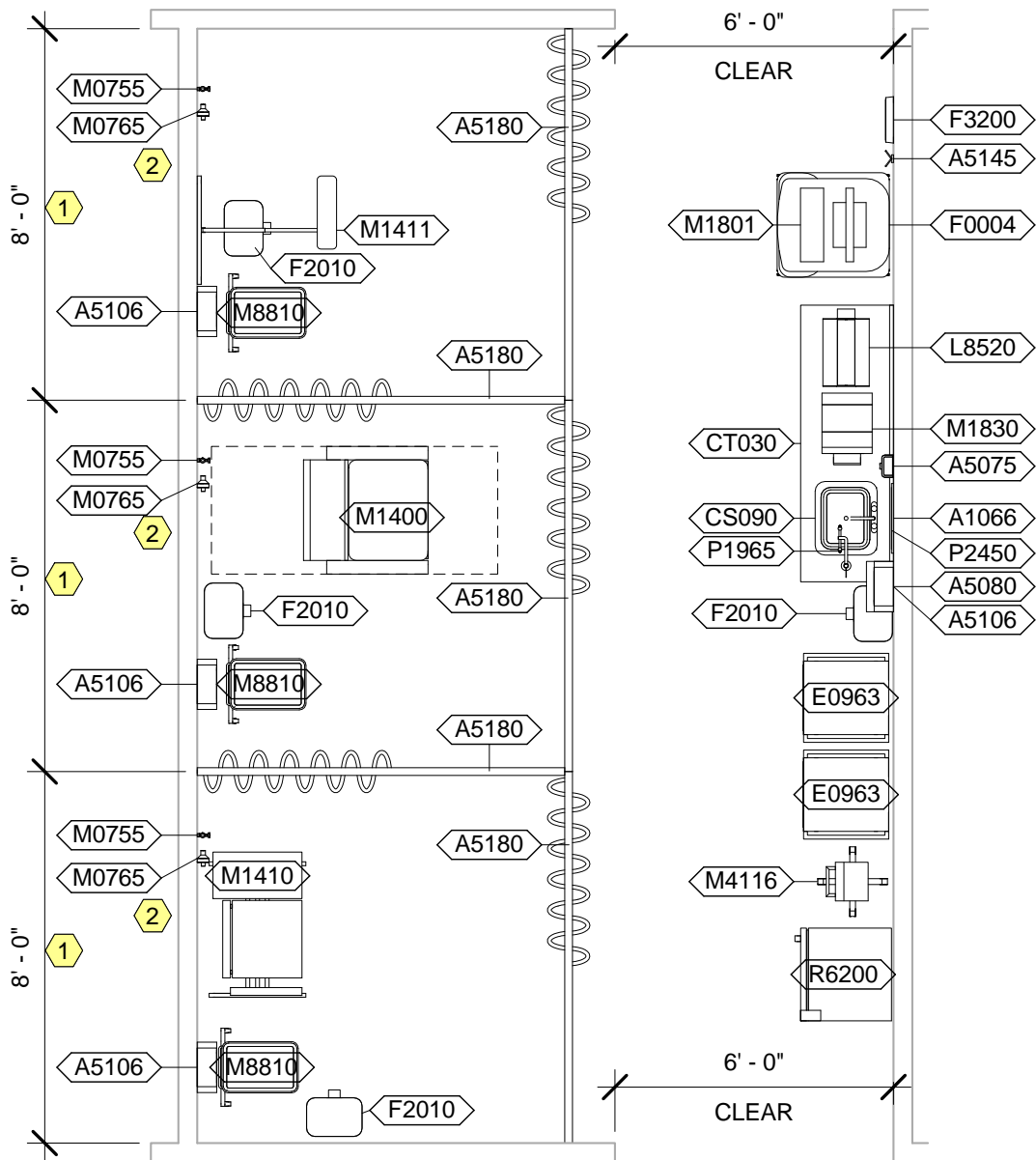
**LBVP2 - FLOOR PLAN**

<b>Room Description:</b> Laboratory, Venipuncture, Multi-Chair	<b>NSF:</b> 360	<b>LBVP2</b>	
<b>Plate Description:</b> Floor Plan	<b>Scale:</b> 1/4" = 1'-0"	Sheet <b>2</b>	of <b>6</b>



**LBVP2 - CEILING PLAN**

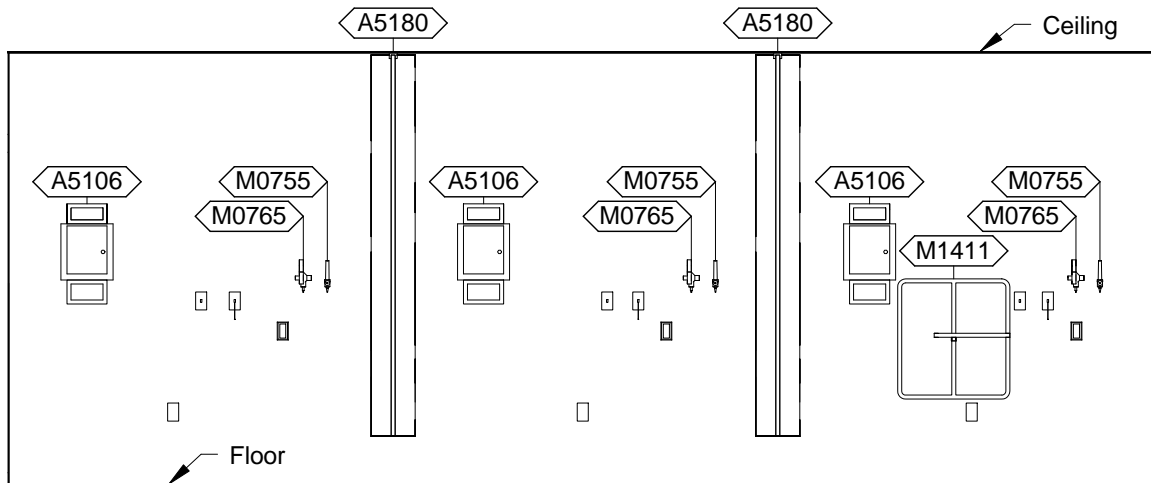
<b>Room Description:</b> Laboratory, Venipuncture, Multi-Chair	<b>NSF:</b> 360	<b>LBVP2</b>	
<b>Plate Description:</b> Reflected Ceiling Plan	<b>Scale:</b> 1/4" = 1'-0"	Sheet <b>3</b>	of <b>6</b>



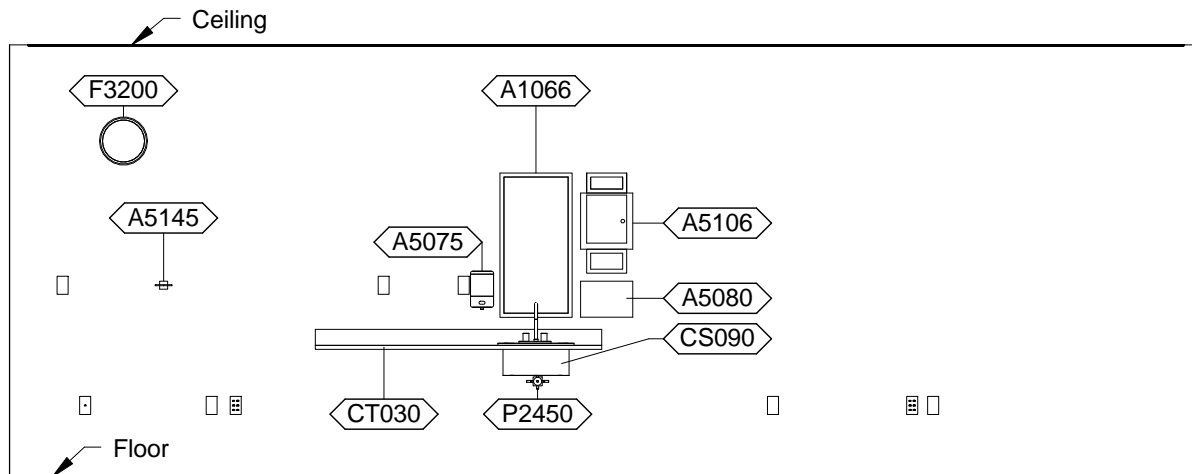
LBVP2 - NOTES

- 1 Dimensions may vary depending upon staffing and number of patient chairs required.
- 2 Piped gases and emergency power only required in hospital occupancy.

<b>Room Description:</b> Laboratory, Venipuncture, Multi-Chair	<b>NSF:</b> 360	<b>LBVP2</b>	
<b>Plate Description:</b> Equipment Plan	<b>Scale:</b> 1/4" = 1'-0"	Sheet <b>4</b>	of <b>6</b>



LBVP2 - PLAN WEST



LBVP2 - PLAN EAST

<b>Room Description:</b> Laboratory, Venipuncture, Multi-Chair	<b>NSF:</b> 360	<b>LBVP2</b>	
<b>Plate Description:</b> Interior Room Elevations	<b>Scale:</b> 1/4" = 1'-0"	Sheet <b>5</b>	of <b>6</b>

LBVP2 - EQUIPMENT SCHEDULE

JSN	Nomenclature	Qty	Logistics				Utilities					
			AR	NA	AF	VA	1	2	3	4	5	6
A1066	Mirror, Float Glass, With SS Frame	1	A	A	A	A	-	-	-	-	-	-
A5075	Dispenser, Soap, Disposable	1	C	C	C	C	-	-	-	-	-	-
A5080	Dispenser, Paper Towel, SS, Surface Mounted	1	A	A	A	A	-	-	-	-	-	-
A5106	Waste Disposal Unit, Sharps w/Glove Dispenser	4	C	A	C	C	-	-	-	-	-	-
A5145	Hook, Garment, Double, SS, Surface Mounted	1	A	A	A	A	-	-	-	-	-	-
A5180	Track, Cubicle, Surface Mounted, With Curtain	5	A	A	A	A	-	-	-	-	-	-
CS090	Sink, SS, Single Compartment, 7.5x19x16 ID	1	A	A	A	A	D	-	-	-	-	-
CT030	Countertop, High Pressure Laminate	1	A	A	A	A	-	-	-	-	-	-
E0963	Cart, General Storage, Mobile	2	C	C	C	C	-	-	-	-	-	-
F0004	Mobile, Workstation	1	C	C	C	C	-	-	-	-	-	-
F2010	Basket, Wastepaper, Step-On	4	C	C	C	C	-	-	-	-	-	-
F3200	Clock, Battery, 12" Diameter	1	C	C	C	C	-	-	-	-	-	-
L8520	Shaker, Rotating, 12 Standard Tubes	1	C	C	C	C	-	A	-	-	-	-
M0755	Flowmeter, Oxygen, Low Flow	3	C	C	C	C	-	-	A	-	-	-
M0765	Regulator, Vacuum	3	C	C	C	C	-	-	B	-	-	-
M1400	Chair, Blood Donor, Recliner, Manual or Pneumatic	1	C	C	C	C	-	-	-	-	-	-
M1410	Chair, Laboratory, Blood Drawing, w/Storage	1	C	C	C	C	-	-	-	-	-	-
M1411	Phlebotomy Arm, Wheelchair Accessible	1	C	C	C	C	-	-	-	-	-	-
M1801	Computer, Microprocessing, w/Flat Panel Monitor	1	C	C	C	C	-	A	-	-	-	-
M1830	Printer, Label, Pharmacy	1	C	C	C	C	-	A	-	-	-	-
M4116	Monitor, Vital Signs	1	C	C	C	C	-	A	-	-	-	-
M8810	Stand, Mayo	3	C	C	C	C	-	-	-	-	-	-
P1965	Eyewash, Eye/Face, Sink Mounted, Hands-free	1	A	A	A	A	A	-	-	-	-	-
P2450	Valve, Mixing, Thermostatic	1	A	A	A	A	A	-	-	-	-	-
R6200	Refrigerator, U/C or F/S, 5 Cu Ft	1	C	C	C	C	-	A	-	-	-	-

LBVP2 - DATA/TELEPHONE EQUIPMENT

JSN	Nomenclature	Qty	Logistics			
			AR	NA	AF	VA
A1010	Telecommunication Outlet	2	A	A	A	A
A1014	Telephone, Wall Mounted, 1 Line, with Speaker	1	A	A	A	A

<b>Room Description:</b> Laboratory, Venipuncture, Multi-Chair	<b>NSF:</b> 360	<b>LBVP2</b>	
<b>Plate Description:</b> Equipment Schedule	<b>Scale:</b>	Sheet <b>6</b>	of <b>6</b>