

KEY NOTES

1. MOUNT A5145, HOOK, AT 1372 [4'-6"] A.F.F.
2. INCREASE THIS DIMENSION AS NEEDED TO COMPLY WITH ADA IF THE DOOR HAS A CLOSER OR IF 610 [2'-0"] CLEARANCE IS NOT AVAILABLE AT THE STRIKE SIDE OF THE DOOR.
3. COORDINATE LOCATION OF M1620, PATIENT CHART HOLDER, AND ROOM SIGNAGE.
4. PROVIDE A5109, GRAB BARS, THAT COMPLY WITH ADA.
5. MOUNT A5145, HOOK, AT 1219 [4'-0"] AFF. PROVIDE 2-A5145'S FOR NAVY PROJECTS ONLY.
MOUNT 1-A5145 AT 1219 [4'-0"] AFF AND 1-A5145 AT 1524 [5'-0"] AFF.
6. P3200, UTR ELECTRONIC LAVATORY, MAY BE USED INSTEAD OF P3100, LAVATORY. FOR THE P3200 PROVIDE EITHER BATTERY POWER OR HARD WIRED CONNECTION.

**EXAM, ISOLATION, NEGATIVE PRESSURE &
TOILET, UNISEX (EXGR6/TLTU1)**

PRIMARY CARE/FAMILY PRACTICE

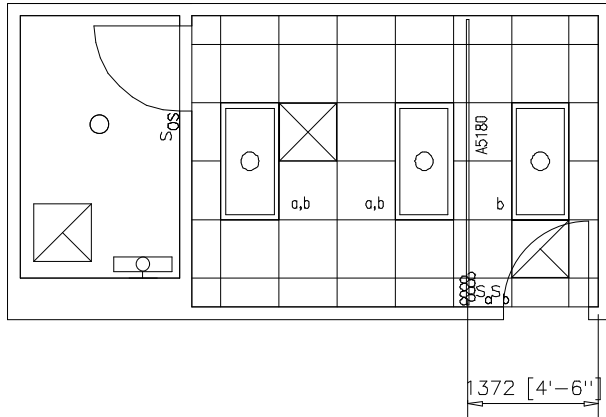
FLOOR/EQUIPMENT PLAN

DATE: 07/12/2001

17.6 NSM (189 NSF)

0 1000 2000

1:50 SCALE (MILLIMETERS)



EXAM, ISOLATION, NEGATIVE PRESSURE &
TOILET, UNISEX (EXGR6/TLTU1)

PRIMARY CARE/FAMILY PRACTICE

CEILING PLAN

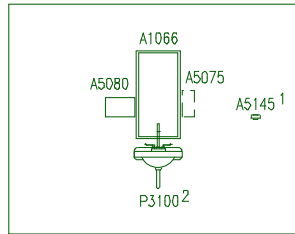
17.6 NSM (189 NSF)

DATE: 07/12/2001

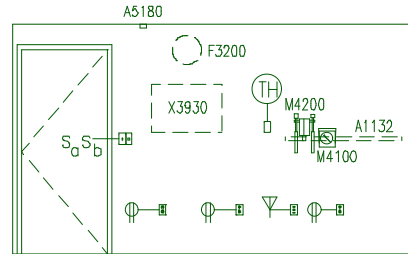
0 1000 2000



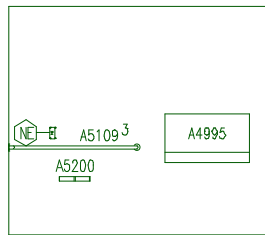
1:50 SCALE (MILLIMETERS)



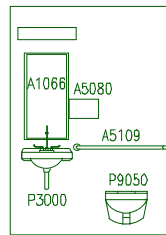
EAST



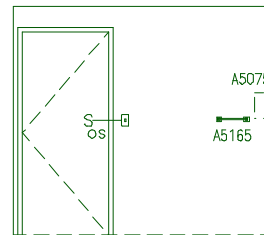
SOUTH



WEST (TOILET)



SOUTH (TOILET)



EAST (TOILET)

KEY NOTES

1. MOUNT A5145, HOOK, AT 1219 [4'-0"] AFF. PROVIDE 2-A5145'S FOR NAVY PROJECTS ONLY.
MOUNT 1-A5145 AT 1219 [4'-0"] AFF AND 1-A5145 AT 1524 [5'-0"] AFF.
2. P3200, UTR ELECTRONIC LAVATORY, MAY BE USED INSTEAD OF P3100, LAVATORY. FOR THE P3200 PROVIDE EITHER BATTERY POWER OR HARD WIRED CONNECTION.
3. PROVIDE A5109, GRAB BARS, THAT COMPLY WITH ADA.

General Notes:

1. For typical equipment mounting heights see "TYPICAL EQUIPMENT MOUNTING HEIGHTS" drawing.
2. MIL-STD-1691 data can only be accessed from the Equipment Plan.

EXAM, ISOLATION, NEGATIVE PRESSURE & TOILET, UNISEX (EXGR6/TLTU1)

PRIMARY CARE/FAMILY PRACTICE

ELEVATIONS

DATE: 07/12/2001

17.6 NSM (189 NSF)

0 1000 2000

1:50 SCALE (MILLIMETERS)

Room Code: EXRG6 Room Qty: 1 Room Area: 139.96 Room Description: EXAM, ISOLATION, NEGATIVE PRESSURE

JSN	NOMENCLATURE	Qty	UNIT	LOG	Utl	Utl	Utl	Utl	Utl	Utl
			ISSUE	CAT	1	2	3	4	5	6
Equipment per Room:										
A1066	Mirror, Float Glass, With SS Frame, 36X18	1	EA	A
A1132	Rail, Accessory Mounting, Length As Required	1	LF	C
A5075	Dispenser, Soap, Disposable	1	EA	C
A5080	Dispenser, Paper Towel, SS, Surface Mounted	1	EA	A
A5106	Waste Disposal Unit, Sharps w/Glove Dispenser	1	EA	C
A5145	Hook, Garment, Double, SS, Surface Mounted	2	EA	A
A5180	Track, Cubicle, Surface Mounted, With Curtain	1	FT	A
E0210	Worksurface, w/Overhead Cab, Wall Mtd, 48" W	1	EA	C	.	A
E0948	Cart, General Storage, Mobile, 42"H x 32"W x 22"	1	EA	C
F0205	Chair, Side With Arms	1	EA	C
F0280	Chair, Swivel, Low Back	1	EA	C
F2000	Basket, Wastepaper, Round, Metal, 18 H x 16 Dia.	2	EA	C
F3200	Clock, Battery, 12" Diameter	1	EA	C
M1620	Holder, Chart, Patient, Wall or Door Mounted	1	EA	A
M1800	Computer, Microprocessing, w/CRT Monitor	1	EA	C	.	A
M3072	Frame, Infectious Waste Bag w/Lid	1	EA	C
M4040	Scale, Weighing, 300 Pound Capacity	1	EA	C
M4100	Sphygmomanometer, Aneroid, Wall Mounted	1	EA	C
M4200	Otoscope/Ophthalmoscope, Wall Mounted	1	EA	C	.	A
M9020	Table, Exam, Pediatric, With Scale	1	EA	C	.	A
M9025	Table, Examination/Treatment, With Cabinet	1	EA	C	.	A
P3100	Lavatory, Vitreous China, Slab Type	1	EA	A	D
X3930	Illuminator, Film, Double, Wall Mounted, 20x29x6	1	EA	C	.	A
A1066	Mirror, Float Glass, With SS Frame, 36X18	1	EA	A
A4995	Table, Diaper Changing, Wall Mounted	1	EA	A
A5075	Dispenser, Soap, Disposable	1	EA	C
A5080	Dispenser, Paper Towel, SS, Surface Mounted	1	EA	A
A5109	Grab Bar, 1-1/4" Dia., SS, 2 Wall, W/C Accessibl	1	EA	A
A5145	Hook, Garment, Double, SS, Surface Mounted	1	EA	A
A5165	Shelf, 5" Depth, SS, Surface Mounted	1	EA	A
A5202	Dispenser, Toilet Paper w/Utility Shelf, SS, 2-Ro	1	EA	A
F2010	Basket, Wastepaper, Step-On	1	EA	C
P3200	Lavatory, Vitreous China, Slab Type w/Sens Op Fa	1	EA	A	D
P9050	Toilet, Wall Hung, Siphon Jet	1	EA	A	B

GRAND TOTAL