

EXRG1 - INTERIOR DESIGN

| Floor Finish | | Wall Finish | | Ceiling Finish | | Room Height | Room Noise | | |
|--------------|-----------|-------------|-----------|----------------|-----------|-------------|------------|--------|----|
| Preferred | Alternate | Preferred | Alternate | Preferred | Alternate | ft - in | Min NC | Max NC | SC |
| VT | - | GPT | - | AT1 | - | 8' - 0" | 30 | 35 | 45 |

EXRG1 - DOOR SCHEDULE

| Mark | Type | Count | Height | Width | Notes |
|------|--------------|-------|---------|---------|-------|
| | | | ft - in | ft - in | |
| A | Single-Flush | 1 | 7' - 0" | 3' - 0" | |

Room Description: Exam Room

NSF: 120

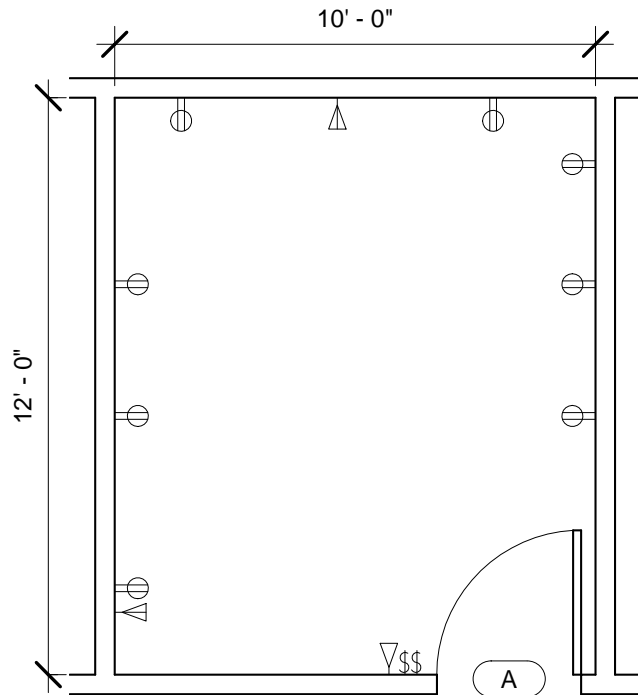
EXRG1

Plate Description: Room/Equipment Isometric

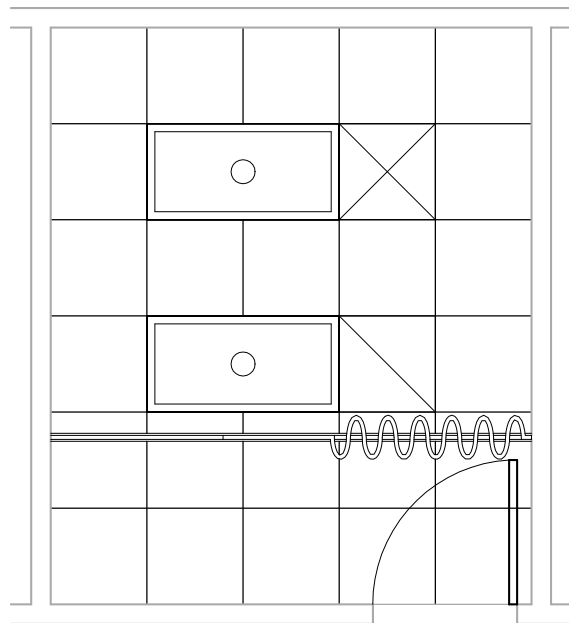
Scale:

Sheet
1

of
5

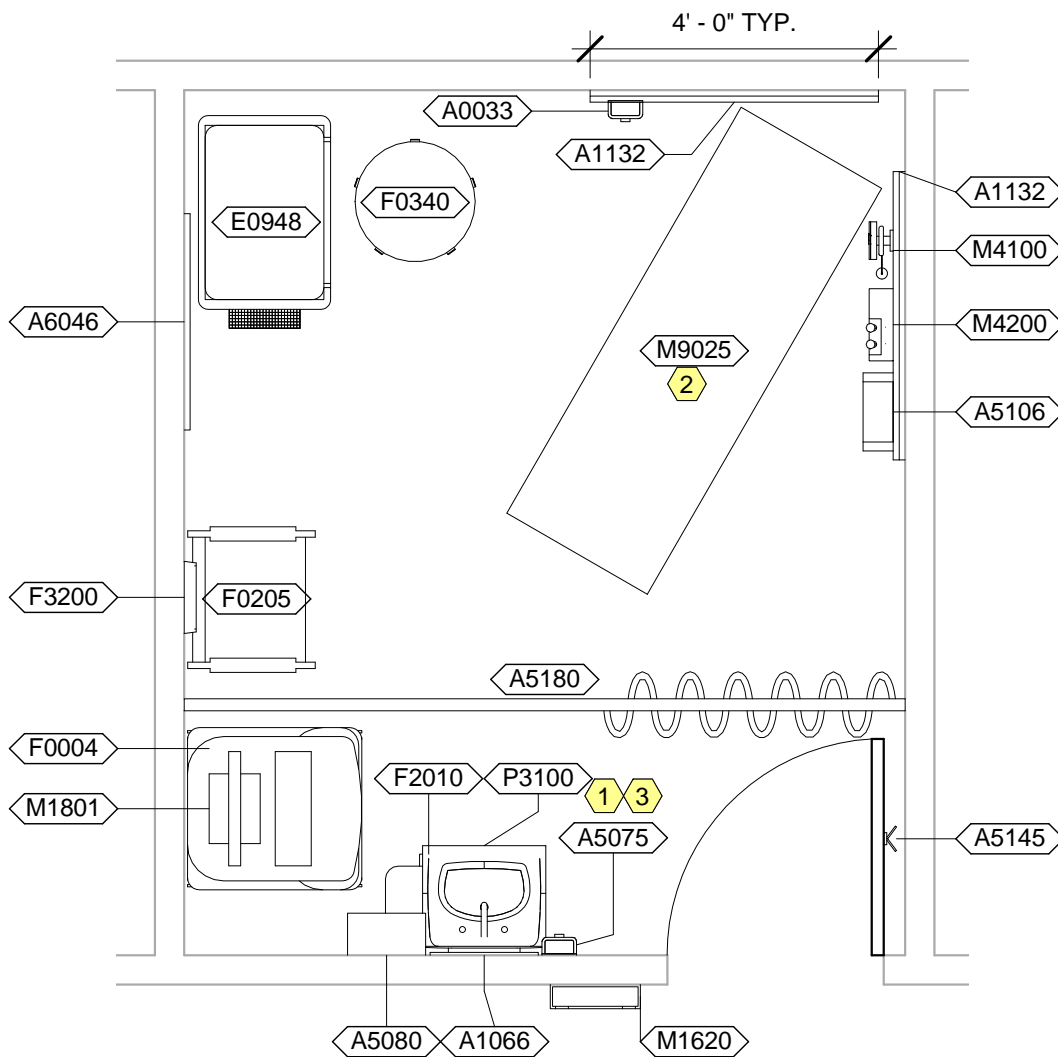


EXRG1 - FLOOR PLAN



EXRG1 - CEILING PLAN

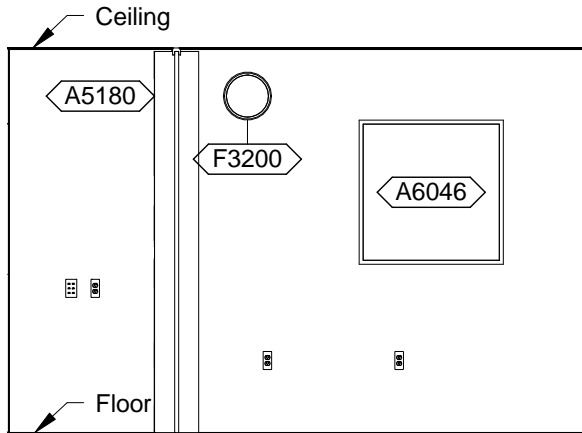
| | | | |
|---|----------------------------|-------------------|----------------|
| Room Description: Exam Room | NSF: 120 | EXRG1 | |
| Plate Description: Floor & Ceiling Plans | Scale: 1/4" = 1'-0" | Sheet 2 | of 5 |



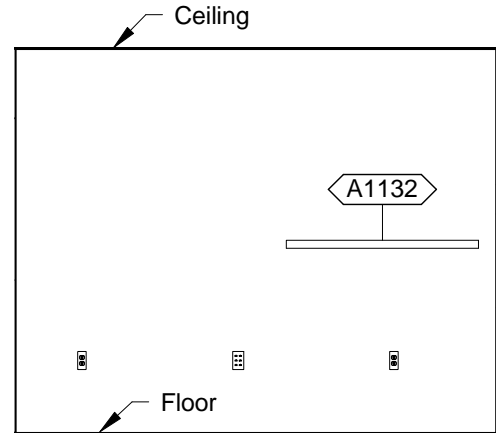
EXRG1 - NOTES

- 1 JSN P3200, Lavatory Electronic, may be used instead of JSN P3100, Lavatory. For the JSN P3200, Lavatory Electronic, provide either battery power or hard wired connection.
- 2 For Pediatrics, Women's Health, & Regular Exam Rooms, use JSN M9025, Table Exam. In Pediatrics applications, JSN M9020, Table Exam Peds, may also be utilized.
- 3 JSN P8710, Utility Center, shall be included in Navy projects only.

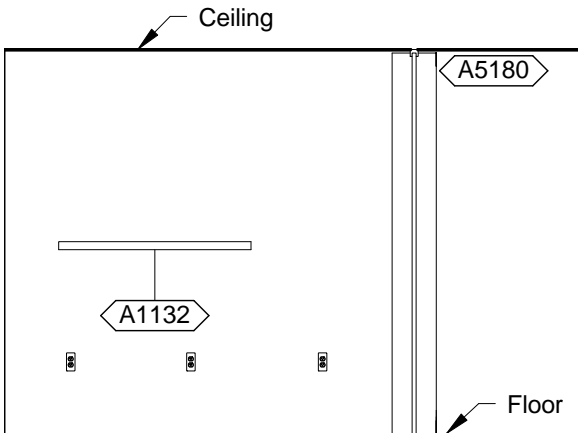
| | | | |
|--|----------------------------|---------------------|------------------|
| Room Description: Exam Room | NSF: 120 | <h1>EXRG1</h1> | |
| Plate Description: Equipment Plan | Scale: 3/8" = 1'-0" | Sheet <h2>3</h2> | of <h2>5</h2> |



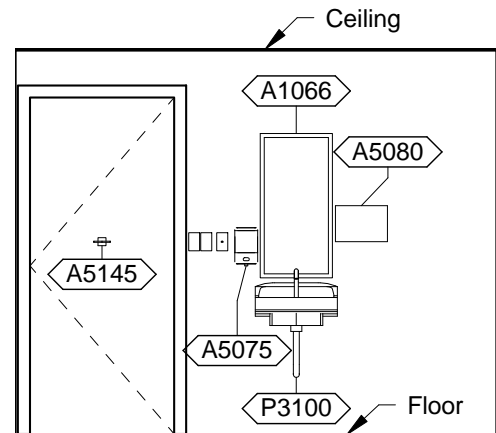
EXRG1 - PLAN WEST



EXRG1 - PLAN NORTH



EXRG1 - PLAN EAST



EXRG1 - PLAN SOUTH

| | | | |
|--|----------------------------|---------------------|------------------|
| Room Description: Exam Room | NSF: 120 | <h1>EXRG1</h1> | |
| Plate Description: Interior Room Elevations | Scale: 1/4" = 1'-0" | Sheet <h2>4</h2> | of <h2>5</h2> |

EXRG1 - EQUIPMENT SCHEDULE

| JSN | Nomenclature | Qty | Logistics | | | | Utilities | | | | | | |
|-------|---|-----|-----------|----|----|----|-----------|---|---|---|---|---|---|
| | | | AR | NA | AF | VA | 1 | 2 | 3 | 4 | 5 | 6 | |
| A0033 | Hand Sanitizer, Wall Mounted | 1 | - | - | - | - | - | - | - | - | - | - | - |
| A1066 | Mirror, Float Glass, With SS Frame | 1 | A | A | A | A | - | - | - | - | - | - | - |
| A1132 | Rail, Accessory Mounting, 48" | 2 | A | A | A | A | - | - | - | - | - | - | - |
| A5075 | Dispenser, Soap, Disposable | 1 | C | C | C | C | - | - | - | - | - | - | - |
| A5080 | Dispenser, Paper Towel, SS, Surface Mounted | 1 | A | A | A | A | - | - | - | - | - | - | - |
| A5106 | Waste Disposal Unit, Sharps w/Glove Dispenser | 1 | C | A | C | C | - | - | - | - | - | - | - |
| A5145 | Hook, Garment, Double, SS, Surface Mounted | 1 | A | A | A | A | - | - | - | - | - | - | - |
| A5180 | Track, Cubicle, Surface Mounted, With Curtain | 1 | A | A | A | A | - | - | - | - | - | - | - |
| A6046 | Artwork, Decorative, With Frame | 1 | C | C | C | C | - | - | - | - | - | - | - |
| E0948 | Cart, General Storage, Mobile, 42"H x 32"W x 22"D | 1 | C | C | C | C | - | - | - | - | - | - | - |
| F0004 | Mobile, Workstation | 1 | - | - | - | - | - | - | - | - | - | - | - |
| F0205 | Chair, Side With Arms | 1 | C | C | C | C | - | - | - | - | - | - | - |
| F0340 | Stool, Self Adjusting | 1 | C | C | C | C | - | - | - | - | - | - | - |
| F2010 | Basket, Wastepaper, Step-On | 1 | C | C | C | C | - | - | - | - | - | - | - |
| F3200 | Clock, Battery, 12" Diameter | 1 | C | C | C | C | - | - | - | - | - | - | - |
| M1620 | Holder, Chart, Patient, Wall or Door Mounted | 1 | A | A | A | A | - | - | - | - | - | - | - |
| M1801 | Computer, Microprocessing, w/Flat Panel Monitor | 1 | C | C | C | C | - | A | - | - | - | - | - |
| M4100 | Sphygmomanometer, Aneroid, Wall Mounted | 1 | C | C | C | C | - | - | - | - | - | - | - |
| M4200 | Otoscope/Ophthalmoscope, Wall Mounted | 1 | C | C | - | C | - | A | - | - | - | - | - |
| M9025 | Table, Examination/Treatment, With Cabinet | 1 | C | C | C | C | - | A | - | - | - | - | - |
| P3100 | Lavatory, Vitreous China, Slab Type | 1 | A | A | A | A | D | - | - | - | - | - | - |

EXRG1 - DATA/TELEPHONE EQUIPMENT

| JSN | Nomenclature | Qty | Logistics | | | |
|-------|---|-----|-----------|----|----|----|
| | | | AR | NA | AF | VA |
| A1010 | Telecommunication Outlet | 2 | A | A | A | A |
| A1014 | Telephone, Wall Mounted, 1 Line, with Speaker | 1 | A | A | A | A |

| | | | |
|--|-----------------|-------------------|----------------|
| Room Description: Exam Room | NSF: 120 | EXRG1 | |
| Plate Description: Equipment Schedule | Scale: | Sheet 5 | of 5 |