

KEY NOTES

1. MOUNT A5145, HOOK, AT 1372 [4'-6"] AFF. PROVIDE 2-A5145'S FOR NAVY PROJECTS ONLY.
MOUNT 1-A5145 AT 1372 [4'-6"] AFF AND 1-A5145 AT 1524 [5'-0"] AFF.
2. PROVIDE A5109 AND A5110, GRAB BARS, THAT COMPLY WITH ADA.

ON-CALL ROOM & TOILET/SHOWER (DUTY1/TLTS1)

EMERGENCY SERVICES

FLOOR/EQUIPMENT PLAN

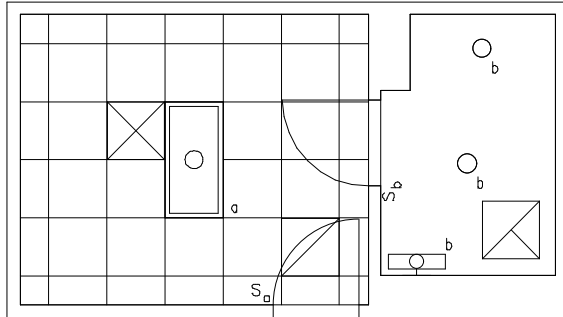
15.90 NSM (171 NSF)

0 1000 2000



DATE: 07/12/2001

1:50 SCALE (MILLIMETERS)



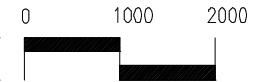
ON-CALL ROOM & TOILET/SHOWER (DUTY1/TLTS1)

EMERGENCY SERVICES

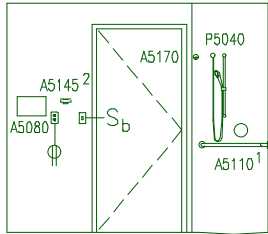
CEILING PLAN

DATE: 07/12/2001

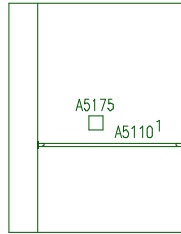
15.90 NSM (171 NSF)



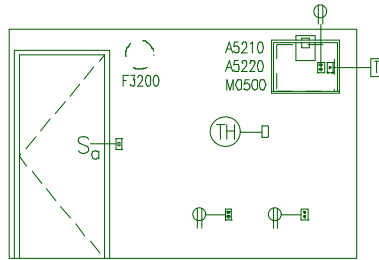
1:50 SCALE (MILLIMETERS)



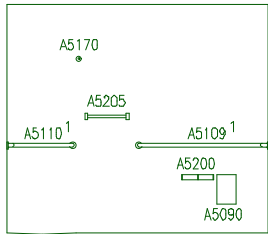
WEST (TOILET/SHOWER)



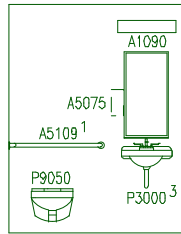
NORTH (TOILET/SHOWER)



SOUTH (ON-CALL)



EAST (TOILET/SHOWER)



SOUTH (TOILET/SHOWER)

General Notes:

1. For typical equipment mounting heights see "TYPICAL EQUIPMENT MOUNTING HEIGHTS" drawing.
2. MIL-STD-1691 data can only be accessed from the Equipment Plan.

KEY NOTES

1. PROVIDE A5109 AND A5110, GRAB BARS, THAT COMPLY WITH ADA.
2. MOUNT A5145, HOOK, AT 1372 [4'-6"] AFF. PROVIDE 2-A5145'S FOR NAVY PROJECTS ONLY.
MOUNT 1-A5145 AT 1372 [4'-6"] AFF AND 1-A5145 AT 1524 [5'-0"] AFF.
3. DO NOT PROVIDE GOOSENECK STYLE FAUCET.

ON-CALL ROOM & TOILET/SHOWER (DUTY1/TLTS1)

EMERGENCY SERVICES

ELEVATIONS

DATE: 07/12/2001

15.90 NSM (171 NSF)



1:50 SCALE (MILLIMETERS)

Project Rooms (User Contents Only)

As of 06/07/2005

Page 1

Room Code: DUTY1 Room Qty: 1 Room Area: 120.01 Room Description: ON CALL ROOM

JSN	NOMENCLATURE	Qty	UNIT	LOG	Utl	Utl	Utl	Utl	Utl	Utl
			ISSUE	CAT	1	2	3	4	5	6
Equipment per Room:										
A5145	Hook, Garment, Double, SS, Surface Mounted	1	EA	A
A5210	Bracket, Television, Wall Mounted, w/Adjust Arm	1	EA	A
A5220	Bracket, Television, Wall Backing	1	EA	A
C0025	Cabinet, Wardrobe, 1 Door, 84x24x22	1	EA	A
E0042	Workcenter, Computer, Free Standing, 48" W	1	EA	C
F0280	Chair, Swivel, Low Back	1	EA	C
F0400	Cabinet, Bedside, Door, Drawer	1	EA	C
F2000	Basket, Wastepaper, Round, Metal, 18 H x 16 Dia.	1	EA	C
F2405	Bed, Non-medical, Single	1	EA	C
F2420	Lamp, Table, With Shade	1	EA	C	.	A
F3200	Clock, Battery, 12" Diameter	1	EA	C
M0500	Television, Color, 20" Diagonal	1	EA	C	.	A
M1800	Computer, Microprocessing, w/CRT Monitor	1	EA	C	.	A
M1825	Printer, Computer	1	EA	C	.	A
A1090	Mirror, Float Glass, With SS Frame & Shelf, 36X1	1	EA	A
A5075	Dispenser, Soap, Disposable	1	EA	C
A5080	Dispenser, Paper Towel, SS, Surface Mounted	1	EA	A
A5090	Disposal, Sanitary Napkin, SS, Surface Mounted	1	EA	A
A5109	Grab Bar, 1-1/4" Dia., SS, 2 Wall, W/C Accessibl	1	EA	A
A5110	Grab Bar, 1-1/4" Dia., SS, 2 Wall, Shower Use	1	EA	A
A5145	Hook, Garment, Double, SS, Surface Mounted	1	EA	A
A5170	Rod, Shower Curtain, 1"Diameter, W/Curtain & Hoo	1	EA	A
A5175	Soap Dish, With Bar, SS, Recessed	1	EA	A
A5200	Dispenser, Toilet Tissue, SS, 2-Roll, Surface Mn	1	EA	A
A5205	Bar, Towel, 1" Diameter, SS, Surface Mounted	1	EA	A
F2000	Basket, Wastepaper, Round, Metal, 18 H x 16 Dia.	1	EA	C
P3000	Lavatory, Vitreous China, Straight Back	1	EA	A	D
P5040	Shower, Single, Hand-Held	1	EA	A	D
P9050	Toilet, Wall Hung, Siphon Jet	1	EA	A	B

=====

GRAND TOTAL

29