

KEY NOTES

- 1. X-RAY REMOTE CONTROL W/CORDED SWITCH

**DENTAL TREATMENT ROOM,
GENERAL(DNTG1)**

3.20.03

DENTAL CLINIC

FLOOR/EQUIPMENT PLAN

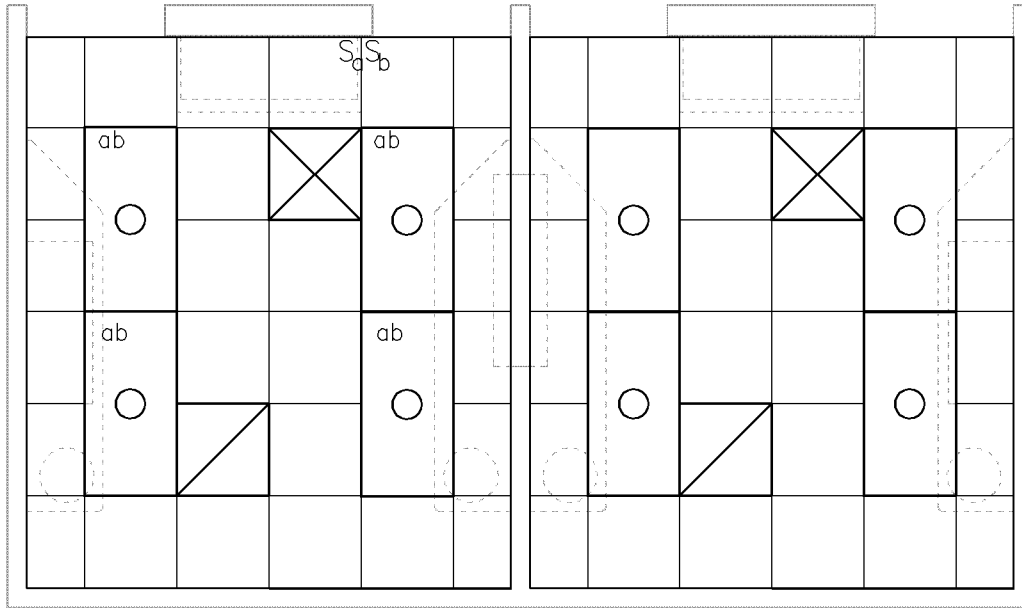
11.71 NSM (126 NSF)

DATE: 04/24/2006

0 1000 2000



1:50 SCALE (MILLIMETERS)



**DENTAL TREATMENT ROOM,
GENERAL(DNTG1)**

3.20.03

DENTAL CLINIC

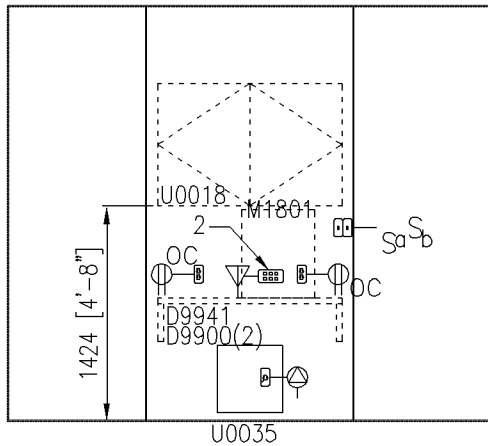
0 1000 2000

CEILING PLAN

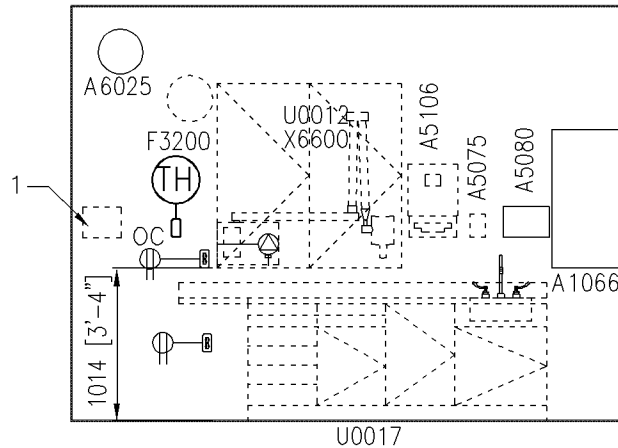


DATE: 04/24/2006

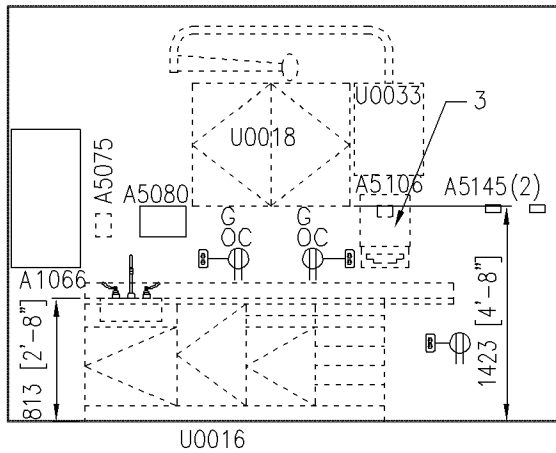
1:50 SCALE (MILLIMETERS)



NORTH



EAST



WEST

NOTES

1. SEE TYPICAL EQUIPMENT MOUNTING HEIGHTS SCHEDULE, SECTION 7.01

KEY NOTES

1. X-RAY REMOTE CONTROL UNIT
2. EMPTY 3/4" CONDUIT TO D7090
3. LOCATE AT TOP OF BACK SPLASH AS NECESSARY TO AVOID LIGHT MOUNTING PLATE

**DENTAL TREATMENT ROOM,
GENERAL(DNTG1)**

3.20.03

DENTAL CLINIC

0 1000 2000

ELEVATIONS



DATE: 04/24/2006

1:50 SCALE (MILLIMETERS)

Medical Equipment Room Guide Plates

3.20Dental Unit

Plate Number 3.20.03

Room Name: Dental Treatment Room, General

SEPS# DNTG1

JSN	Nomenclature	Qty	Army	Navy	Utilities						
			Cat	Cat	AF Cat	1	2	3	4	5	6
A1066	Mirror, Float Glass, With SS Frame	2	A	A	A
A5075	Dispenser, Soap, Disposable	2	C	C	C
A5080	Dispenser, Paper Towel, SS, Surface Mounted	2	A	A	A
A5106	Waste Disposal Unit, Sharps w/Glove Dispenser	2	C	C	C
A5145	Hook, Garment, Double, SS, Surface Mounted	2	A	A	A
A6025	Mirror, Safety, Convex, 8" Dia.	1	A	A	A
D3320	Chair, Operating, Dental	1	C	C	C	B	A	H	.	.	D
D3380	Stool, Operating, Dental, Doctor	1	C	C	C
D3390	Stool, Operating, Dental, Assistant	1	C	C	C
D3565	Resin Curing Unit, Visible Light	1	C	-	-	.	A
D7090	Utility Center, Dental, Floor Mounted	1	C	B	B	B	B	H	.	.	.
D8250	Delivery System, Dental Operating	1	C	C	C	B	B	H	.	.	.
D8850	Amalgamator, Dental	1	C	-	-	.	A
D9900	Bracket, Support	2	A	A	A
D9941	Countertop, Laminated, 3/4" Thick	1	A	C	C
F2010	Basket, Wastepaper, Step-On	2	C	C	C
F3200	Clock, Battery, 12" Diameter	1	C	C	C
M1801	Computer, Microprocessing, w/Flat Panel Monitor	1	C	C	C	.	A
U0012	Cabinet, Dental, X-ray, Shared, 50" W	1	A	E	E
U0015	Digital x-ray unit	1	F	F	F
U0016	Cabinet, Dental, Doctor's, General	1	A	E	E
U0017	Cabinet, Dental, Assistant's, General	1	A	E	E
U0018	Cabinet, Dental, Wall, 42"	2	A	E	E
U0020	Cart, Mobile, with Assistant Delivery	1	C	C	C	B	A	H	.	.	.
U0033	Light, Dental, Operating, Wall-Mounted	1	A	E	E	.	F	.	.	.	J
U0035	Utility Wall Plate, Dental	1	C	B	B
X6600	Radiographic Unit, Dental, Wall Mounted, 7 Ma (Shared)	1	F	F	F	.	A	.	.	.	B,J

April 24, 2006