



Room Description: Dental Prosthodontics Lab, Medium (DNPL2)

NSF: 480

DNPL2

Sheet Description: Room/Equipment Isometric

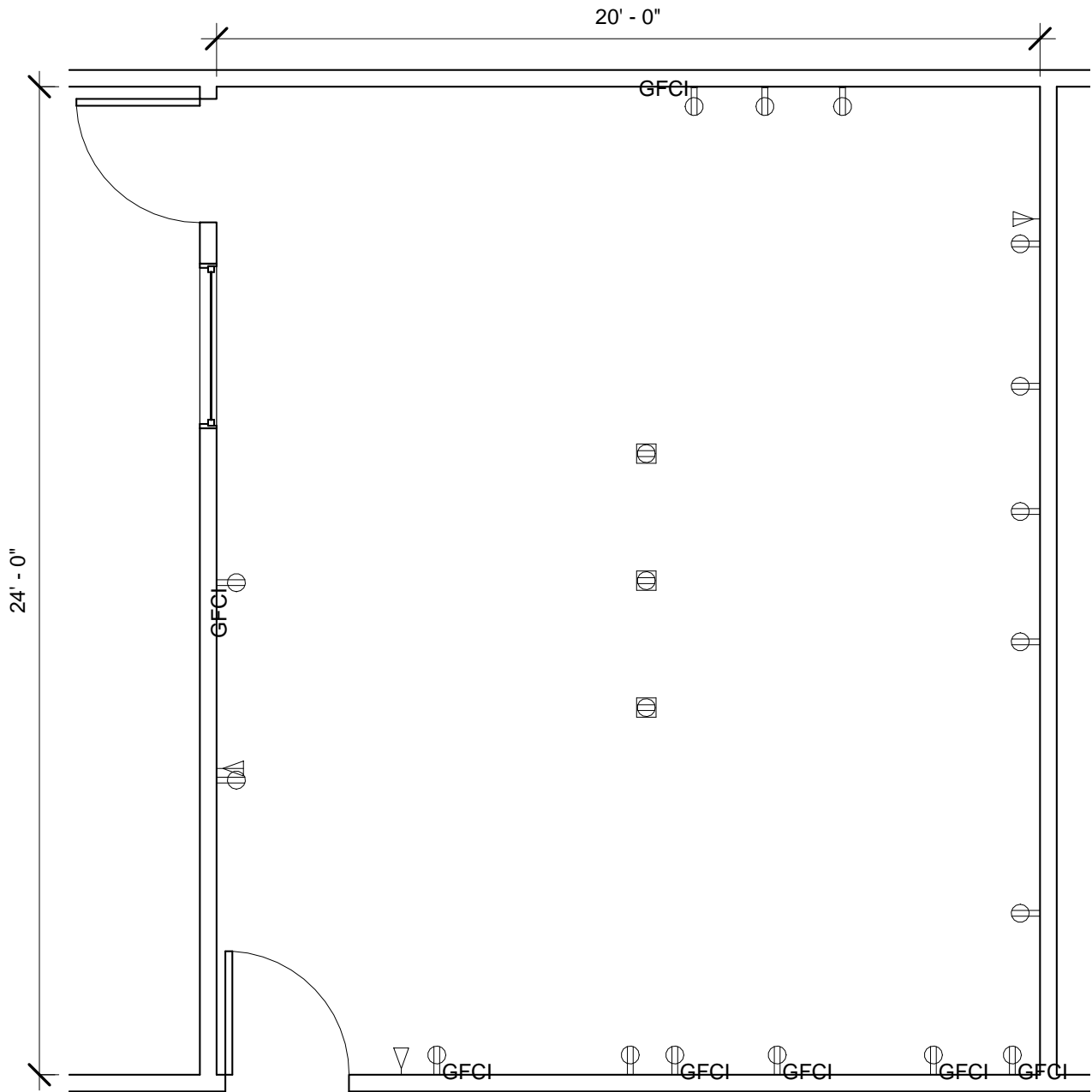
Scale:

Sheet

1

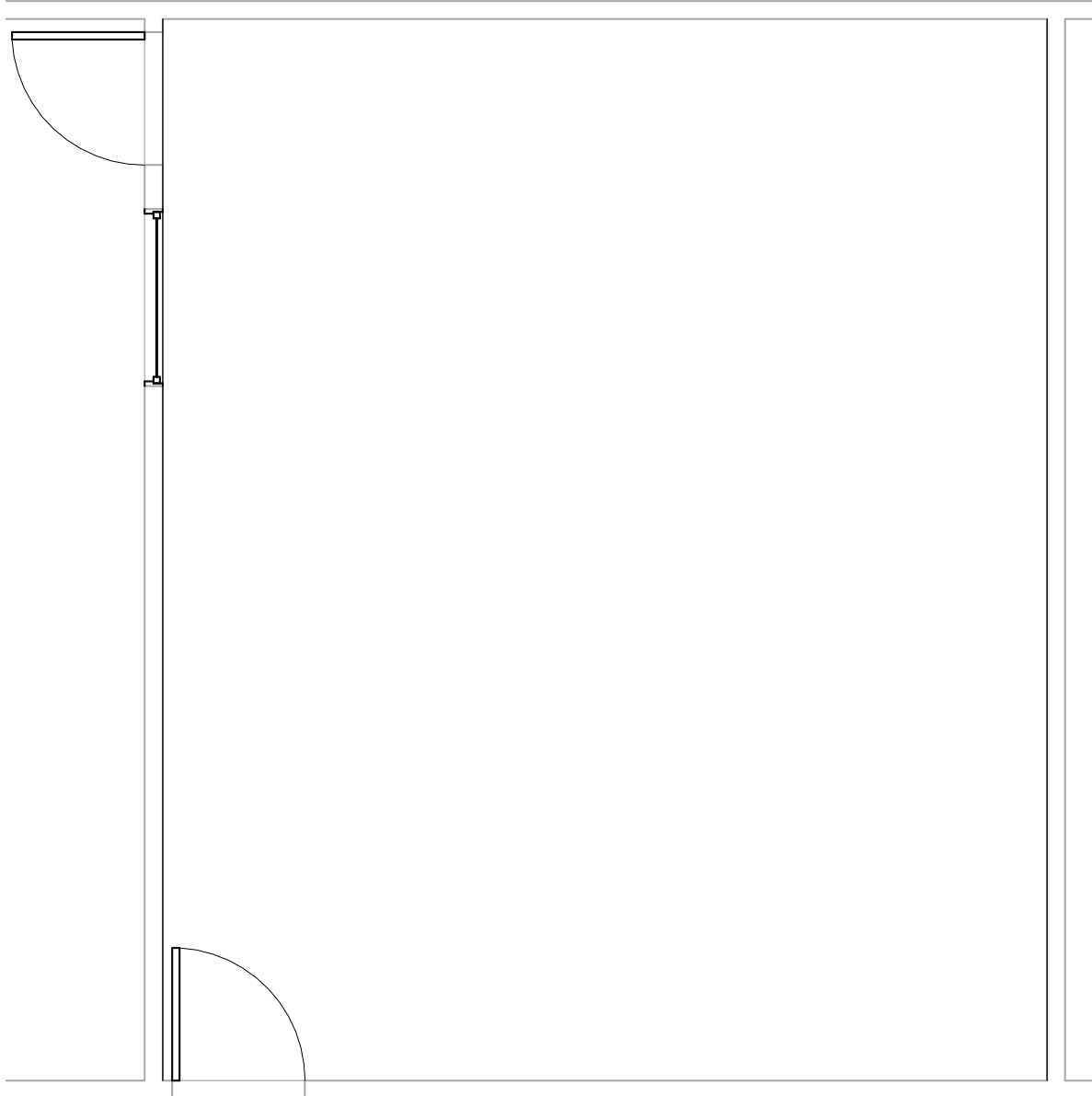
of

8



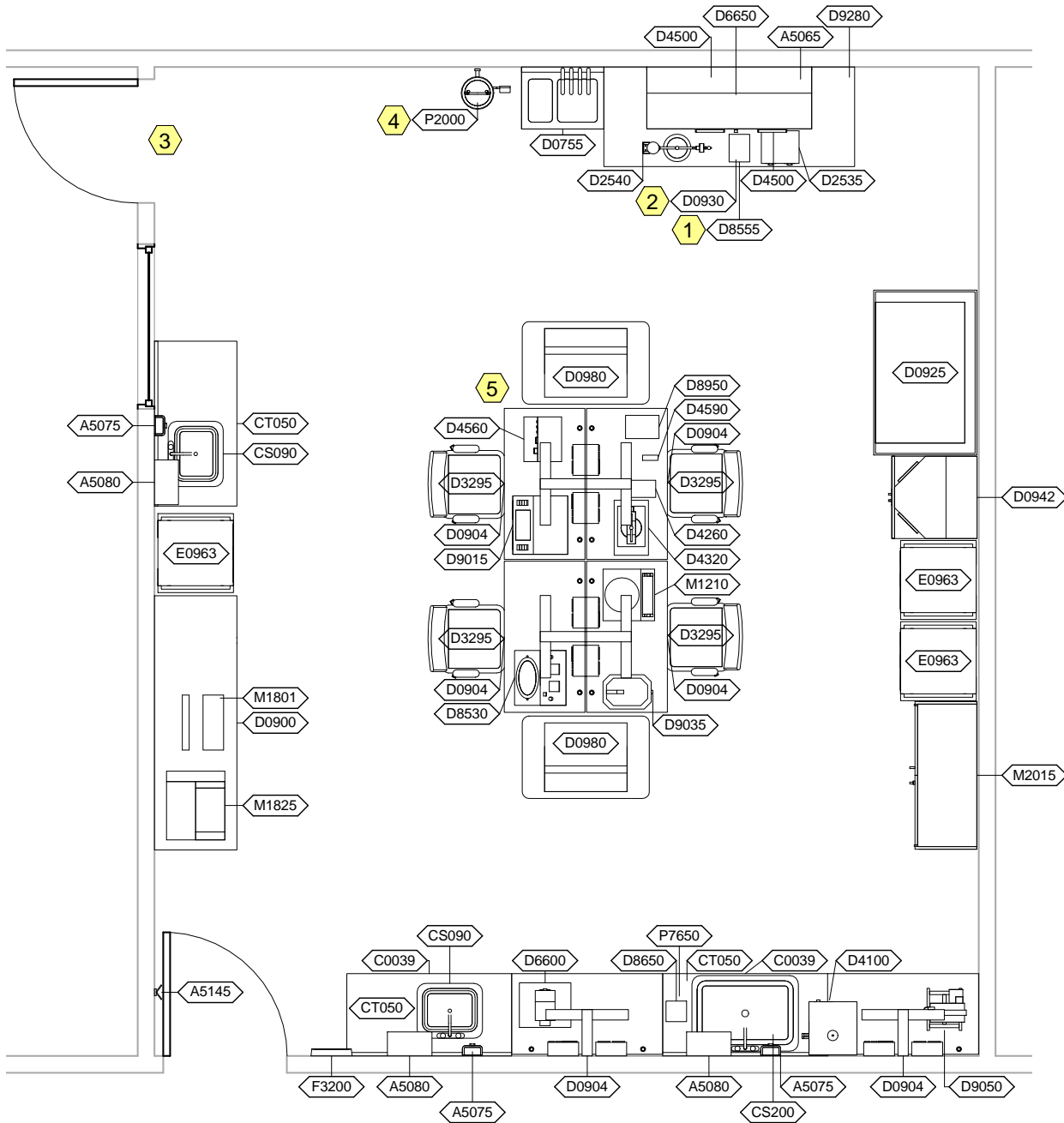
DNPL2 - FLOOR PLAN

Room Description: Dental Prosthodontics Lab, Medium (DNPL2)	NSF: 480	DNPL2	
Sheet Description: Floor Plan	Scale: 1/4" = 1'-0"	Sheet 2	of 8



DNPL2 - CEILING MOUNTED EQUIPMENT PLAN

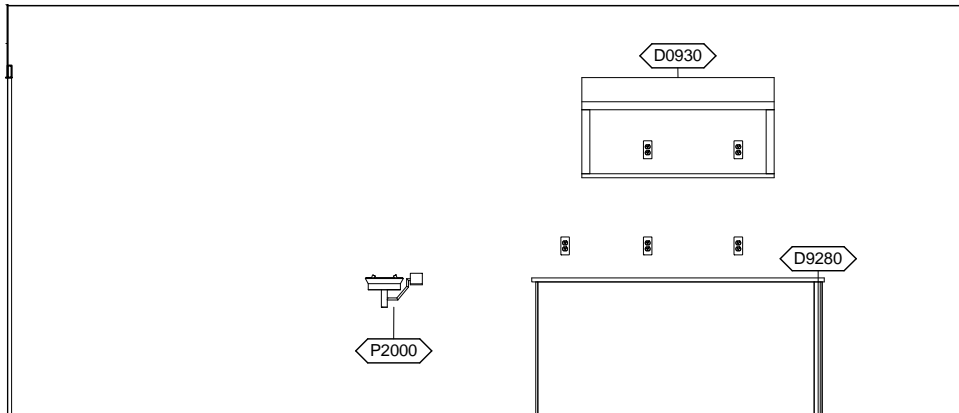
Room Description: Dental Prosthodontics Lab, Medium (DNPL2)	NSF: 480	DNPL2	
Sheet Description: Ceiling Mounted Equipment Plan	Scale: 1/4" = 1'-0"	Sheet 3	of 8



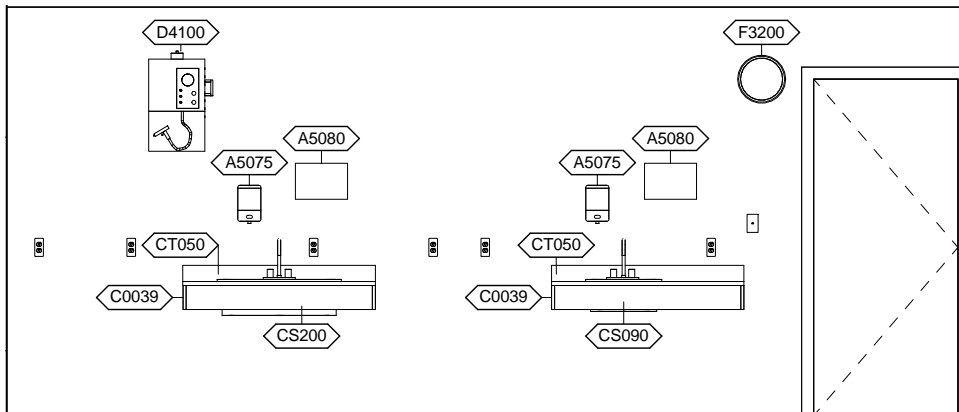
DNPL2 - NOTES

- 1 Provide oxygen tanks for JSN D8555, Torch.
- 2 Provide casting ring cool-down with steel grid for JSN D0930, Workstation.
- 3 If DNPL2, Dental Prosthetics Lab, Medium, is located adjacent to DNPC2, Dental, Porcelain/Ceramic Room, Medium, then coordinate the door and window locations.
- 4 JSN P1960, Eyewash, Counter Top, may be used instead of JSN P2000, Eyewash, Wall Mounted, Hands Free.
- 5 Option to provide power pole instead of floor mounted outlets.

Room Description: Dental Prosthetics Lab, Medium (DNPL2)	NSF: 480	<h1 style="margin: 0;">DNPL2</h1>	
Sheet Description: Equipment Plan	Scale: 1/4" = 1'-0"	Sheet <h2 style="margin: 0;">4</h2>	of <h2 style="margin: 0;">8</h2>

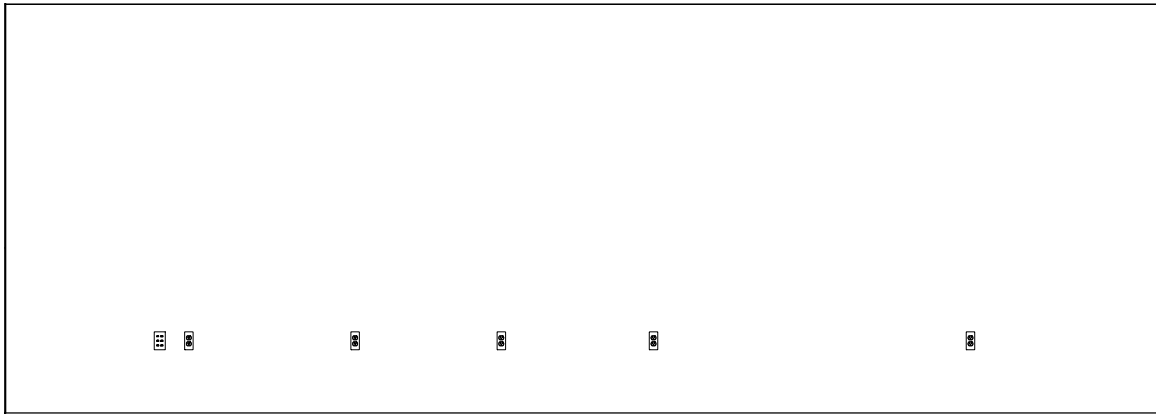


DNPL2 - NORTH ELEVATION

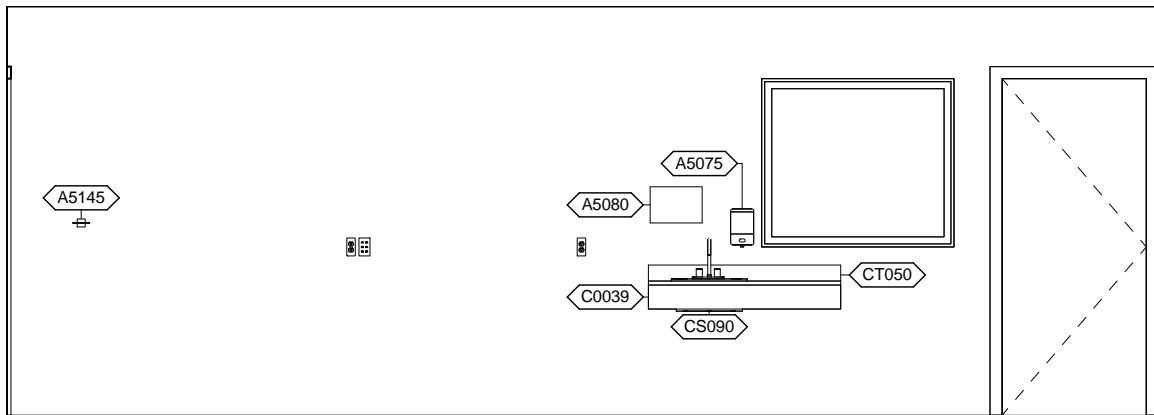


DNPL2 - SOUTH ELEVATION

Room Description: Dental Prosthodontics Lab, Medium (DNPL2)	NSF: 480	DNPL2	
Sheet Description: Interior Room Elevations	Scale: 1/4" = 1'-0"	Sheet 5	of 8



DNPL2 - EAST ELEVATION



DNPL2 - WEST ELEVATION

Room Description: Dental Prosthodontics Lab, Medium (DNPL2)	NSF: 480	DNPL2	
Sheet Description: Interior Room Elevations	Scale: 1/4" = 1'-0"	Sheet 6	of 8

DNPL2 - EQUIPMENT SCHEDULE

JSN	Nomenclature	Qty	LF	AR	Logistics			Utilities					
					NA	AF	VA	1	2	3	4	5	6
A5065	Cabinet, Narcotic, U/C or Ctr, With Safe	1		C	C	C	C	-	-	-	-	-	-
A5075	Dispenser, Soap, Disposable	3		C	C	C	C	-	-	-	-	-	-
A5080	Dispenser, Paper Towel, SS, Surface Mounted	3		A	A	A	A	-	-	-	-	-	-
A5145	Hook, Garment, Double, SS, Surface Mounted	1		A	A	A	A	-	-	-	-	-	-
C0039	Rail, Apron, 4x48x1	3		A	A	A	A	-	-	-	-	-	-
CS090	Sink, SS, Single Compartment, 7.5x19x16 ID	2		A	A	A	A	D	-	-	-	-	-
CS200	Sink, SS, Single Compartment, 12x28x16 ID	1		A	A	A	A	D	-	-	-	-	-
CT050	Countertop, Stainless Steel	3	4'-0"	A	A	A	A	-	-	-	-	-	-
D0755	Tank Assembly, Boilout/Curing, Double	1		A	A	A	A	D	A	-	-	A	E
D0900	Workstation, Dental Lab, Receiving	1		A	A	A	A	-	-	-	-	-	-
D0904	Workstation, Tech, Dental, Lab, Single Station	6		A	A	A	A	-	A	D	-	A	-
D0925	Hood, Fume, Dental Acrylic, Floor Standing	1		A	A	A	A	D	A	-	-	-	E
D0930	Workstation, Dental Lab, Casting	1		A	A	A	A	-	A	-	-	-	E
D0942	Workstation, Dental Lab, Microblasting	1		A	F	F	F	-	A	D	-	-	-
D0980	Workstation, Dental Lab, Polishing, Single	2		A	A	A	A	-	A	-	-	-	-
D2535	Welder, Tack, Orthodontic	1		C	C	C	C	-	A	-	-	-	-
D2540	Casting Machine, Manual, Broken Arm	1		-	-	-	-	-	-	-	-	-	-
D3295	Chair, Rotary, Laboratory, Dental	4		C	C	C	C	-	-	-	-	-	-
D4100	Cleaner, Steam, Dental	1		-	-	-	-	D	D	-	-	-	-
D4260	Handpiece, Laboratory, Dental, Electric	1		C	C	C	C	-	A	-	-	-	-
D4320	Press, Flask, Hydraulic, Single Flask	1		C	C	C	C	-	-	-	-	-	-
D4500	Furnace, Laboratory, Dental, Burnout	2		C	C	C	C	-	A	-	-	-	-
D4560	Engine, Dental, Bench, Electric	1		C	C	C	C	-	A	-	-	-	-
D4590	Chisel, Dental, Pneumatic	1		C	C	C	C	-	-	D	-	-	-
D6600	Mixer / Investor, With Vacuum	1		-	-	-	-	-	A	-	-	-	-
D6650	Former, Vacuum, With Motor, Vacuum Pump, Heater	1		C	C	C	C	-	A	-	-	-	-
D8530	Polisher, Electrochemical	1		C	C	C	C	-	A	-	-	-	-
D8555	Torch, Casting/Soldering, Dental	1		C	C	C	C	-	-	C	-	A	E
D8650	Chute, Waste, Plaster, Counter Mounted	1		A	A	A	A	-	-	-	-	-	-
D8950	Vibrator, Dental, Heavy Duty	1		C	C	C	C	-	A	-	-	-	-
D9015	Microfinisher, Dental, Counter Mounted	1		A	A	A	A	-	A	D	-	-	-
D9035	Driver, Model Indexing Pins	1		C	C	C	C	-	A	-	-	-	-
D9050	Trimmer, Model, Dental, 1/4 HP	1		-	-	-	-	B	A	-	-	-	-
D9280	Legs, Rail, Apron	1		A	A	A	A	-	-	-	-	-	-
E0963	Cart, General Storage, Mobile	3		C	C	C	C	-	-	-	-	-	-
F3200	Clock, Battery, 12" Diameter	1		C	C	C	C	-	-	-	-	-	-
M1210	Balance, Electronic, Laboratory/Pharmacy	1		C	C	C	C	-	A	-	-	-	-
M1801	Computer, Microprocessing, w/Flat Panel Monitor	1		C	C	C	C	-	A	-	-	-	-
M1825	Printer, Computer	1		C	C	C	C	-	A	-	-	-	-
M2015	Cabinet, Storage, Flammable, Freestanding	1		C	C	C	C	-	-	-	-	-	-
P2000	Eyewash, Wall Mounted, Hands-Free	1		A	A	A	A	B	-	-	-	-	-
P7650	Trap, Plaster, Small	1		A	A	A	A	I	-	-	-	-	-

Room Description: Dental Prosthodontics Lab, Medium (DNPL2)	NSF: 480	DNPL2	
Sheet Description: Equipment Schedule	Scale:	Sheet 7	of 8

DNPL2 - DATA/ELECTRICAL EQUIPMENT

JSN	Nomenclature	Qty	Logistics				
			AR	NA	AF	VA	
A1010	Telecommunication Outlet	2	A	A	A	A	
A1014	Telephone, Wall Mounted, 1 Line, with Speaker	1	A	A	A	A	

Room Description: Dental Prosthodontics Lab, Medium (DNPL2)	NSF: 480	DNPL2	
Sheet Description: Equipment Schedule	Scale:	Sheet 8	of 8