

# DAF STANDARD DESIGN SHOP, AVIONICS (B21 RF Facility) CATCODE: 217712



PHASE:	PRE-FINAL SUBMITTAL
DATE:	AS INDICATED
SCALE:	AS INDICATED

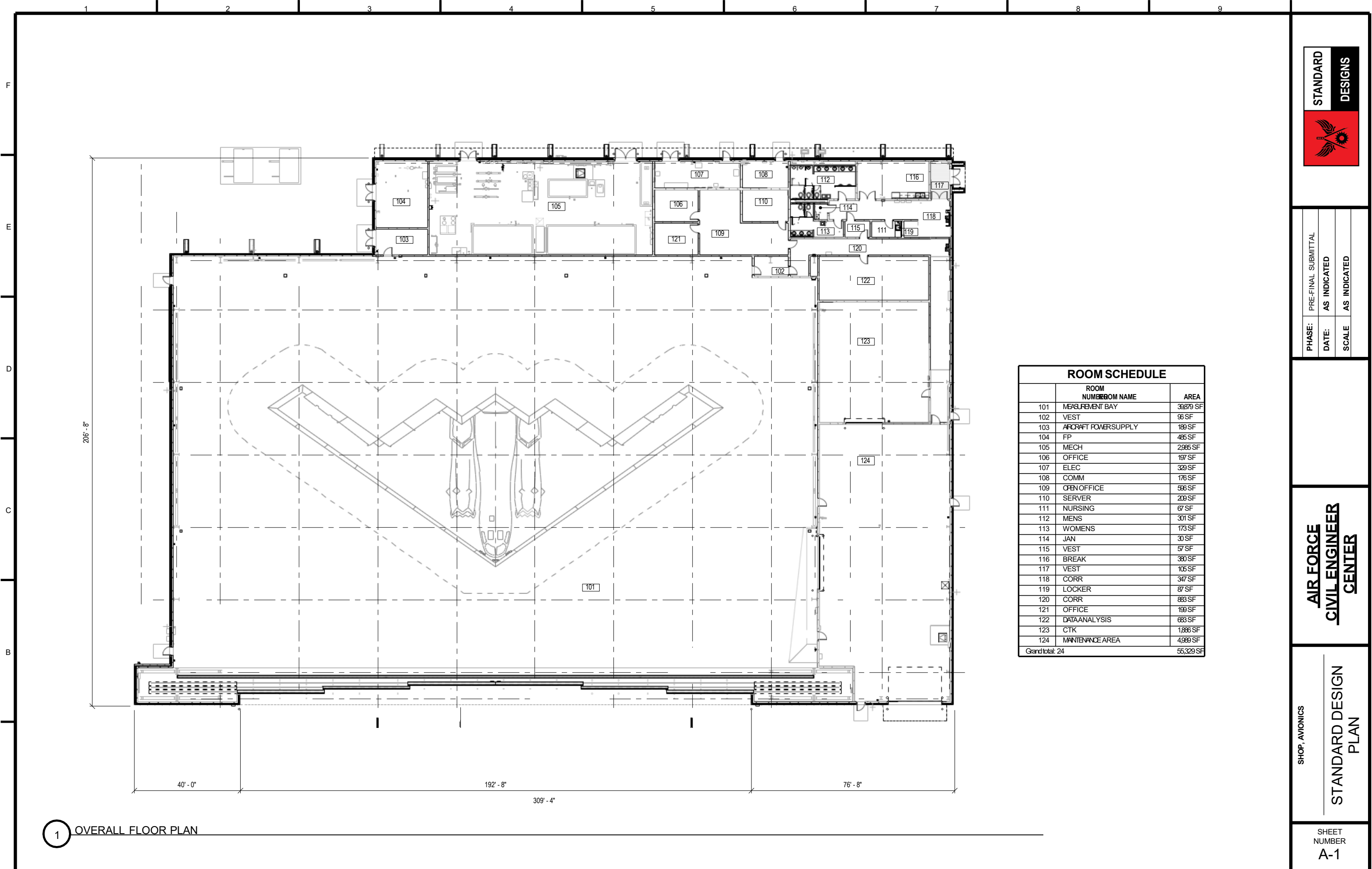
**AIR FORCE  
CIVIL ENGINEER  
CENTER**

SHOP, AVIONICS  
**COVER SHEET**

SHEET NUMBER  
**C-1**

- GENERAL NOTES:
1. THE OVERALL DIMENSIONS ARE APPROXIMATE AS THE BASIS OF DESIGN CONCEPT PLAN DOES NOT INDICATE STRUCTURAL ELEMENTS, ALL PLUMBING CHASES, MISCELLANEOUS UTILITY ROOMS (MECHANICAL, ELECTRICAL, COMMUNICATIONS) OR WALL THICKNESSES, ETC.
  2. AFI 32-1023 REQUIRES USE OF STANDARD DESIGNS WHEN AVAILABLE.
  3. USE OF THIS STANDARD DESIGN DOES NOT ELIMINATE THE NEED TO COMPLY WITH FEDERAL MANDATES (SUCH AS EO 14057, CATALYZING CLEAN ENERGY INDUSTRIES AND JOBS THROUGH FEDERAL SUSTAINABILITY), UFCS, UFGSS, AND DOD/DAF POLICY.
  4. EXCEPTIONS/EXEMPTIONS/WAIVERS ARE REQUIRED FOR PROJECTS NOT IN COMPLIANCE WITH UFC REQUIREMENTS AND DOD/DAF POLICIES. (EX: PROJECTS NOT COMPLYING WITH DOD/DAF, EO 14057, ELECTRIFICATION OF STANDARD BUILDING OPERATIONS POLICIES.)

**MAR 2022**



ROOM SCHEDULE		
ROOM NUMBER	ROOM NAME	AREA
101	MEASUREMENT BAY	39879 SF
102	VEST	96 SF
103	AIRCRAFT POWERSUPPLY	189 SF
104	FP	466 SF
105	MECH	2985 SF
106	OFFICE	197 SF
107	ELEC	329 SF
108	COMM	176 SF
109	OPEN OFFICE	666 SF
110	SERVER	209 SF
111	NURSING	67 SF
112	MENS	301 SF
113	WOMENS	173 SF
114	JAN	30 SF
115	VEST	67 SF
116	BREAK	380 SF
117	VEST	105 SF
118	CORR	347 SF
119	LOCKER	87 SF
120	CORR	883 SF
121	OFFICE	199 SF
122	DATAANALYSIS	683 SF
123	CTK	1,886 SF
124	MAINTENANCE AREA	4989 SF
Grand total: 24		55,329 SF

1 OVERALL FLOOR PLAN



PHASE: PRE-FINAL SUBMITTAL  
 DATE: AS INDICATED  
 SCALE: AS INDICATED

AIR FORCE  
 CIVIL ENGINEER  
 CENTER

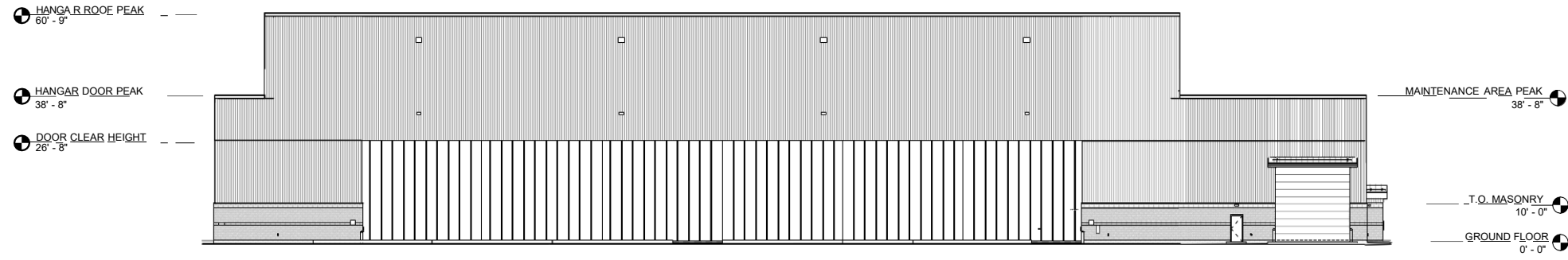
SHOP, AVIONICS  
 STANDARD DESIGN  
 PLAN

SHEET NUMBER  
 A-1

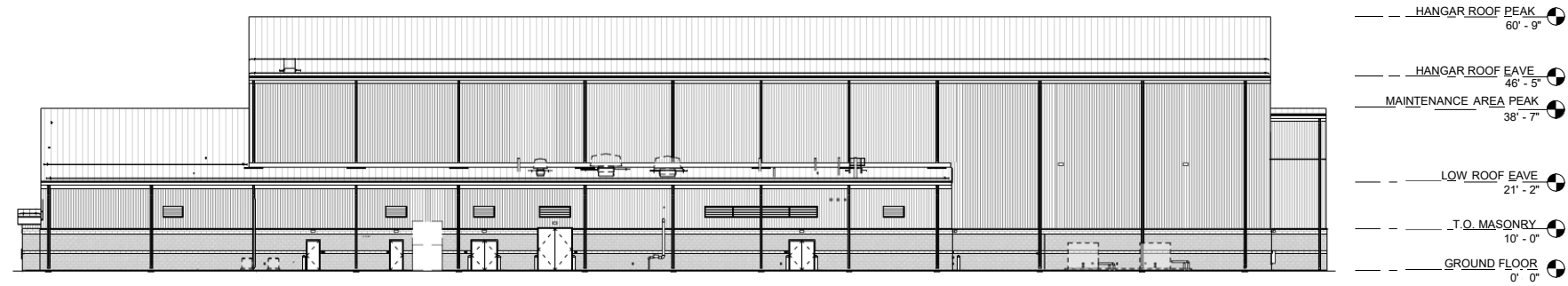
1 2 3 4 5 6 7 8 9

F

E



1 ELEVATION 1



2 ELEVATION 2



PHASE:	PRE-FINAL SUBMITTAL
DATE:	AS INDICATED
SCALE:	AS INDICATED

AIR FORCE CIVIL ENGINEER CENTER

SHOP, AVIONICS ELEVATIONS

SHEET NUMBER A-2

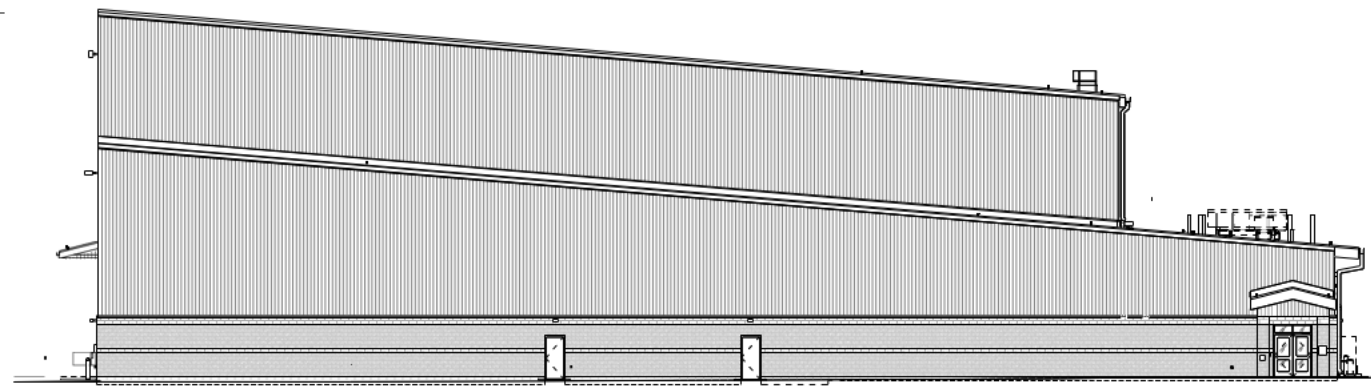
F

E

HANGAR ROOF PEAK  
60' - 9"

MAINTENANCE AREA PEAK  
38' - 7"

DOOR CLEAR HEIGHT  
26' - 8"



HANGAR ROOF EAVE  
46' - 5"

LOW ROOF EAVE  
21' - 2"

I.O. MASONRY  
10' - 0"

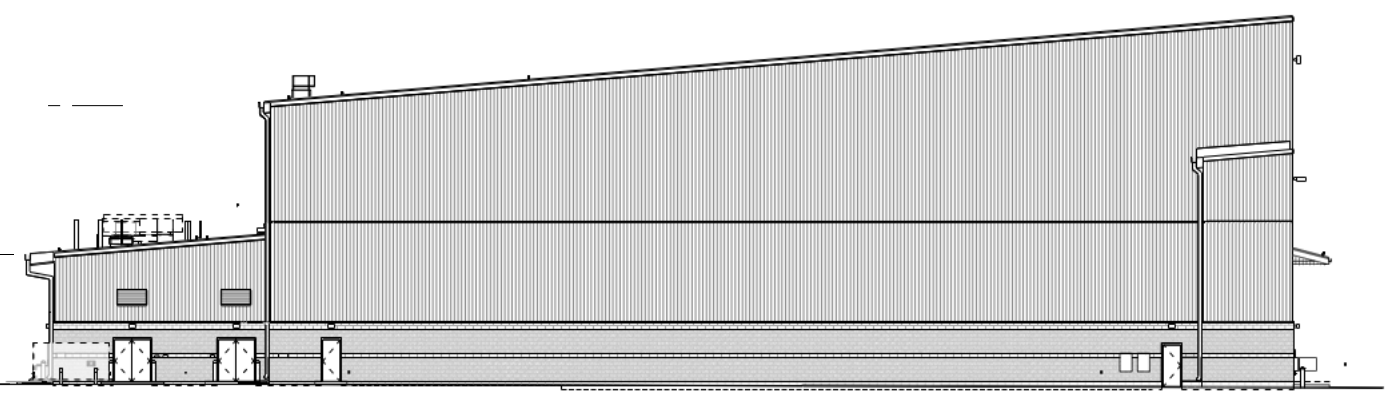
GROUND FLOOR  
0' - 0"

1 ELEVATION 3

HANGAR ROOF EAVE  
46' - 5"

LOW ROOF EAVE  
21' - 2"

GROUND FLOOR  
0' - 0"



HANGAR ROOF PEAK  
60' - 9"

HANGAR DOOR PEAK  
38' - 8"

DOOR CLEAR HEIGHT  
26' - 8"

I.O. MASONRY  
10' - 0"

2 ELEVATION 4



PHASE:	PRE-FINAL SUBMITTAL
DATE:	AS INDICATED
SCALE:	AS INDICATED

AIR FORCE  
CIVIL ENGINEER  
CENTER

SHOP, AVIONICS  
ELEVATIONS

SHEET  
NUMBER  
A-3